

UTILITY ASSESSMENT MEMORANDUM

Florida Department of Transportation

District 1

SR 789 (Ringling) Project Development & Environment (PD&E) Study

from Bird Key to Sarasota Harbour West

Sarasota County, Florida

Financial Management Number(s): 436680-1-22-01 & 436680-1-32-01

ETDM Number: 14384

Date: February 2024

The environmental review, consultation, and other actions required by applicable federal environmental laws for this project are being, or have been, carried out by the Florida Department of Transportation (FDOT) pursuant to 23 U.S.C. § 327 and a Memorandum of Understanding dated May 26, 2022 and executed by the Federal Highway Administration and FDOT.



*This item has been digitally signed and sealed by James W. Englert, PE on the date adjacent to the seal.*

*Printed copies of this document are not considered signed and sealed and the signature must be verified on any electronic copies.*

HARDESTY & HANOVER, LLC  
5110 EISENHOWER BOULEVARD,  
SUITE 310  
TAMPA, FL 33634.

# PROFESSIONAL ENGINEER CERTIFICATION

## Utility Assessment Memorandum

**Project:** SR 789 (Ringling) PD&E Study from Bird Key Drive to Sarasota Harbour West

**ETDM Number:** 14384

**Financial Project ID:** 436680-1-22-01 & 436680-1-32-01

**Federal Aid Project Number:** TBD

This preliminary engineering report contains engineering information that fulfills the purpose and need for the SR 789 (Ringling) Project Development & Environment Study from Bird Key Drive to Sarasota Harbour West in Sarasota County, Florida. I acknowledge that the procedures and references used to develop the results contained in this report are standard to the professional practice of transportation engineering as applied through professional judgment and experience.

I hereby certify that I am a registered professional engineer in the State of Florida practicing with Hardesty & Hanover, LLC, and that I have prepared or approved the evaluation, findings, opinions, conclusions or technical advice for this project.



*This item has been digitally signed and sealed by James W. Englert, PE on the date adjacent to the seal.*

*Printed copies of this document are not considered signed and sealed and the signature must be verified on any electronic copies.*

# TABLE OF CONTENTS

<b>1.0</b>	<b>INTRODUCTION</b> .....	<b>1-1</b>
1.1	Purpose of Utilities Assessment Package.....	1-1
1.2	Existing Facilities .....	1-1
1.3	Proposed Improvements.....	1-3
<b>2.0</b>	<b>EXISTING UTILITIES</b> .....	<b>2-1</b>
2.1	Utility Owners/Providers and Location.....	2-1
<b>3.0</b>	<b>UTILITY MITIGATION AND COST</b> .....	<b>3-1</b>

## LIST OF FIGURES

Figure 1-1 Project Location Map .....	1-2
Figure 1-2 SR 789 Preferred Bridge Typical Section.....	1-3
Figure 1-3 SR 789 Preferred Roadway Typical Section .....	1-3

## LIST OF TABLES

Table 2-1 Summary of Utility Contact Information .....	2-2
--	-----

## LIST OF APPENDICES

Appendix A: Utility Contact Letters

Appendix B: Utility Responses

Appendix C: PD&E Recommended Alternative Plans



# 1.0 INTRODUCTION

This project involves the reconstruction of the SR 789 (John Ringling Causeway) bridges [Structure Numbers 170022 and 170951]. The limits of the improvements are from Bird Key Drive to Sarasota Harbour West in Sarasota County, shown on **Figure 1-1**. The purpose of the study is to address structural integrity and operational deficiencies. SR 789 is classified as an Urban, Minor Arterial and consists of a four-lane, divided typical section between Bird Key Drive and Sarasota Harbour West, a distance of 0.741 miles. SR 789 serves as the only connection from downtown Sarasota to St. Armands Key and Lido Key. Although SR 789 is designated as a north-south route, within the project limits SR 789 runs in a generally east-west direction.

The existing twin bridges were constructed in 1958 and cross the Coon Key Waterway, a navigable waterway without a defined channel. Each bridge has two 12-foot (-ft) travel lanes and a 5-ft wide sidewalk on both sides. There are currently no shoulders or designated bicycle facilities across the bridges.

## 1.1 Purpose of Utilities Assessment Memorandum

This utility assessment memorandum has been assembled to provide information on existing utilities on SR 789 from Bird Key Drive to Sarasota Harbour West. This package contains information on the names of utility companies, utility green lines indicating the location of existing utilities, a description of each identified utility, project coordination efforts and information on the cost of relocation.

## 1.2 Existing Facilities

From Bird Key Drive to the bridge, the existing typical section includes two 12-ft wide travel lanes in each direction, separated by a curb and gutter and flush landscaped median ranging in width from a minimum of 12 ft to a maximum of 76 ft. This section of roadway also includes 4-ft wide paved shoulders and a 10-ft multi-use path on the both sides and a meandering 10-ft multi-use path within Bird Key Park that connects to the existing bridges.

The existing twin bridge typical section includes two 12-ft wide travel lanes, 5-ft sidewalks separated by a 9-inch (-in) raised curb for conduits and 10-in railings on both sides. No shoulders or bicycle lanes are currently provided on the bridge. The total width of each bridge is 37 ft 5-in. The clear space between the twin bridges is 62 ft 7-in.

From the bridge to Sarasota Harbour West, the existing typical section includes two 12-ft wide travel lanes in each direction, separated by a 40-ft landscaped median. This section of roadway also includes 4-ft wide paved shoulders, and 10-ft shared-use paths on both sides.

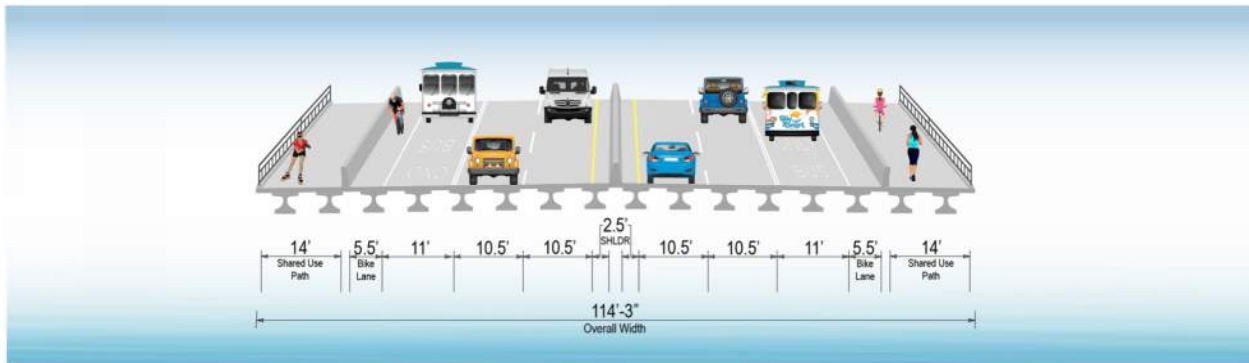
Figure 1-1  
Project Location Map



### 1.3 Proposed Improvements

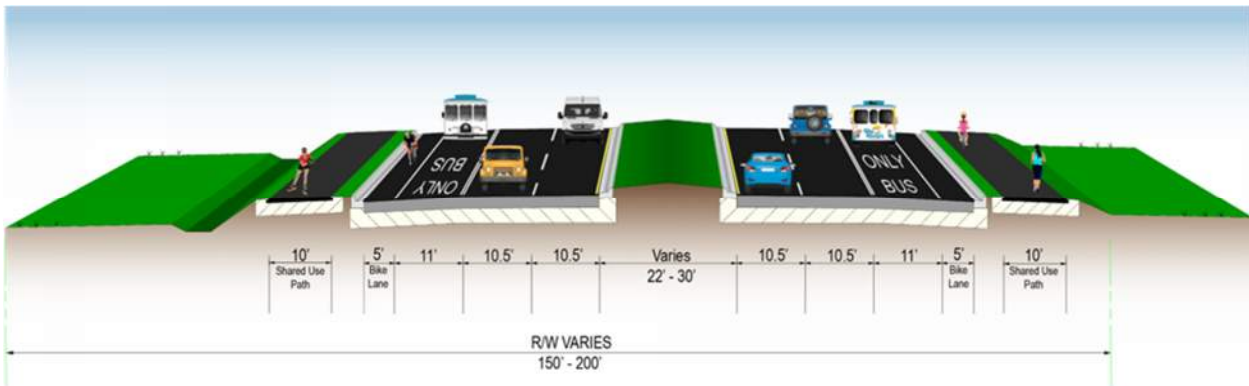
The preferred alternative replaces the existing twin bridges with a single bridge. The single bridge typical section includes two 10.5-ft wide travel lanes, a dedicated 11-ft transit lane, 2.5-ft inside shoulder, 5.5-ft bike lane, and 14-ft shared use path in each direction, shown on **Figure 1-2**. The total width of the bridge is 114 ft 3-in.

**Figure 1-2**  
**SR 789 Preferred Bridge Typical Section**



The new bridge will transition to a curb and gutter roadway typical section that includes two 10.5-ft wide travel lanes, a dedicated 11-ft transit lane, and 5-ft bike lane in each direction, separated by a median with Type E curb and gutter. This section of roadway also includes a 10-ft shared-use path on both sides of the roadway that connects to the bridge. The only modification to the intersections is the addition of transit/right turn lanes at the Bird Key Drive, Sarasota Harbour East/Yacht Club and Sarasota Harbour West/Plymouth Harbor intersections. The signal timing at Bird Key Drive will require adjustments to accommodate the transit lane.

**Figure 1-3**  
**SR 789 Preferred Roadway Typical Section**



The proposed improvements will be constructed within the existing FDOT Right-of-Way with no acquisitions proposed.

## 2.0 EXISTING UTILITIES

The Utility Agency/Owners (UAOs) within the project limits were determined using a variety of sources. A Sunshine 811 Design Ticket was submitted to identify the utility providers and operators registered with the locate service. All utilities were verified with the utility providers and operators during the coordination process for the project. A list of the UAOs identified within the project limits are summarized in **Table 2-1**.

### 2.1 Utility Owners/Providers and Location

All of the utility providers and operators were contacted on January 4, 2021, and were provided aerial maps of the project for review. Copies of the coordination letter can be found in **Appendix A**. Using the aerial maps, the UAOs were asked to assist in locating and identifying their existing and planned facilities within the area of study. Through markups, the utility providers or operators provided information on the location and type of existing facilities and information on the planned facilities anticipated in the future. At the time of the original utility contact, only Florida Power & Light indicated a planned upgrade consisting of undergrounding the overhead power lines. The responses from the utility providers are found in **Appendix B**.

**Table 2-1  
Summary of Utility Contact Information**

<b>Company</b>	<b>Contact</b>	<b>Type of Facility</b>	<b>Location</b>
City of Sarasota Utilities	Ms. Alexandria Davis Shaw 1565 1 <sup>st</sup> Street, Room 100A Sarasota, FL 34230 941-954-4180 <a href="mailto:alexandrea.davisshaw@sarasotagov.com">alexandrea.davisshaw@sarasotagov.com</a>	Water Sewer Reclaim	16" WM on the east side of SR 789. They have sanitary and water facilities along both sides of SR 789 for the length of the project.
Comcast Communications	Kevin Miller 5205 Fruitville Rd Sarasota, FL 34232 239-318-1411 <a href="mailto:Kevin_Miller6@comcast.com">Kevin_Miller6@comcast.com</a>	CATV/BFOC	BFOC from the beginning of the project to the end with some OH-CATV at the northern portion of the project on FP&L poles.
FP&L - Distribution	Greg Coker 1253 12 <sup>th</sup> Avenue E Palmetto, FL 34221 941-723-4430 <a href="mailto:Greg.coker@fpl.com">Greg.coker@fpl.com</a>	Electric	Underground 13 kV primary is from the begin point of the project (Bird Key Drive) with a subaqueous crossing to the north end of the bridge. There it becomes an overhead system to the north end of the project limits.
Frontier Communications	Ms. Denise Hutton 1701 Ringling Blvd Sarasota, FL 34236 941-906-6722 <a href="mailto:Denise.hutton@ftr.com">Denise.hutton@ftr.com</a>	BT/BFOC	BFOC within the project limits on both sides of SR 789.
Longboat Key Utilities	Isaac Brownman 600 Harris Street Longboat Key, FL 34228 941-316-1988 <a href="mailto:lbrownman@longboatkey.org">lbrownman@longboatkey.org</a>	Water Sewer	No involvement response received 3-1-23
TECO Peoples Gas	Anthony Baublitz 8215 Vico Ct Sarasota, FL 34240 443-838-7139 <a href="mailto:AFBaublitz@tecoenergy.com">AFBaublitz@tecoenergy.com</a>	Gas- (Distribution)	From north end of bridge: one GM along west side of SR 789 and one in the median. Subaqueous along east side of bridge. Crosses under SR 789 then along west side of SR 789.
Verizon Business/MCI	James Barra 7701 E. Telecom Parkway Temple Terrace, FL 33637 813-928-9881 <a href="mailto:James.Barra1@VerizonWireless.com">James.Barra1@VerizonWireless.com</a>	BFOC	Based on permit information the line is on the west side and crosses the waterway attached to the bridge.

### 3.0 UTILITY MITIGATION AND COST

Due to the scope of the project, it is anticipated that the SR 789 (Little Ringling) improvements will impact a large number of the existing utility facilities on the project. The extent of the improvements is shown on the recommended alternative concept plans included in **Appendix C**. Mitigation measures would be taken during the design phase of the project to minimize impacts to the existing facilities to the greatest extent possible. If impacts are unavoidable, design alternatives will be reviewed to allow for relocation of the impacted utilities in a manner that minimizes cost to the UAO and service disruption to their customers.

No easements have been identified in the corridor so relocation costs will be borne by the affected utility. Utility coordination will continue throughout the design phase of the project.

### 3.0 UTILITY MITIGATION AND COST

Due to the scope of the project, it is anticipated that the SR 789 (Little Ringling) improvements will impact a large number of the existing utility facilities on the project. The extent of the improvements is shown on the recommended alternative concept plans included in **Appendix C**. Mitigation measures would be taken during the design phase of the project to minimize impacts to the existing facilities to the greatest extent possible. If impacts are unavoidable, design alternatives will be reviewed to allow for relocation of the impacted utilities in a manner that minimizes cost to the UAO and service disruption to their customers.

No easements have been identified in the corridor so relocation costs will be borne by the affected utility. Utility coordination will continue throughout the design phase of the project.

**Appendix A**  
**Utility Contact Letters**





**Florida Department of Transportation**

RON DESANTIS  
GOVERNOR

801 N. Broadway Avenue  
Bartow, Fl. 33830-3809

KEVIN J. THIBAUT, P.E.  
SECRETARY

January 4, 2021

Company	Name	Phone	Email
City of Sarasota Public Works	Martin Furlan	941-263-6234	<a href="mailto:JMartin.Furlan@sarasotafl.gov">JMartin.Furlan@sarasotafl.gov</a>
Comcast	Kevin Miller	239-318-1411	<a href="mailto:Kevin_Miller6@Comcast.com">Kevin_Miller6@Comcast.com</a> <a href="mailto:CENFLR-NFL_Construction@comcast.com">CENFLR-NFL_Construction@comcast.com</a>
FP&L	Greg Coker	941-723-4430	<a href="mailto:Greg.Coker@fpl.com">Greg.Coker@fpl.com</a>
Frontier	Denise Hutton	941-906-6722	<a href="mailto:Denise.Hutton@ftr.com">Denise.Hutton@ftr.com</a>
Longboat Key Utilities	Isaac Brownman	941-316-1988	<a href="mailto:lbrownman@longboatkey.org">lbrownman@longboatkey.org</a>
Verizon Business MCI	James Barra	813-928-9881	<a href="mailto:james.barra1@verizonwireless.com">james.barra1@verizonwireless.com</a>
TECO Peoples gas	Anthony Baublitz	443-838-7139	<a href="mailto:AFBaublitz@tecoenergy.com">AFBaublitz@tecoenergy.com</a>

**RE: FPID: 436680-1-22-01 /County: Sarasota  
SR: 789 /Description: (Ringling) From Bird Key Drive to Sarasota Harbor West**

Dear UAO:

The Department of Transportation is preparing a study to select alternatives for the above-described corridor. The enclosed prints are provided for your assistance in showing where your existing and/or proposed facilities are located in relation to these proposals.

Your cooperation in providing this information is necessary for the Department to reach a decision on the type, design, and location of above project described.


When determining route and design, it is our common obligation to accomplish the improvement without unnecessary cost to the public, whether as taxpayers or rate payers. By providing the following information, the Department can make the most beneficial decision for the public:

- 1) Mark prints in Green Line to show existing facilities
- 2) Provide Cost Estimate of proposed relocation cost and/or reimbursement claims
- 3) Comments/Observations that may help in this study
- 4) Mark prints in Brown Line to show future facilities with identified cost

Your assistance in completing this information no later than **02/05/2021** is necessary due to the limited time available to the Department to complete State and/or Federal reviews and authorizations.

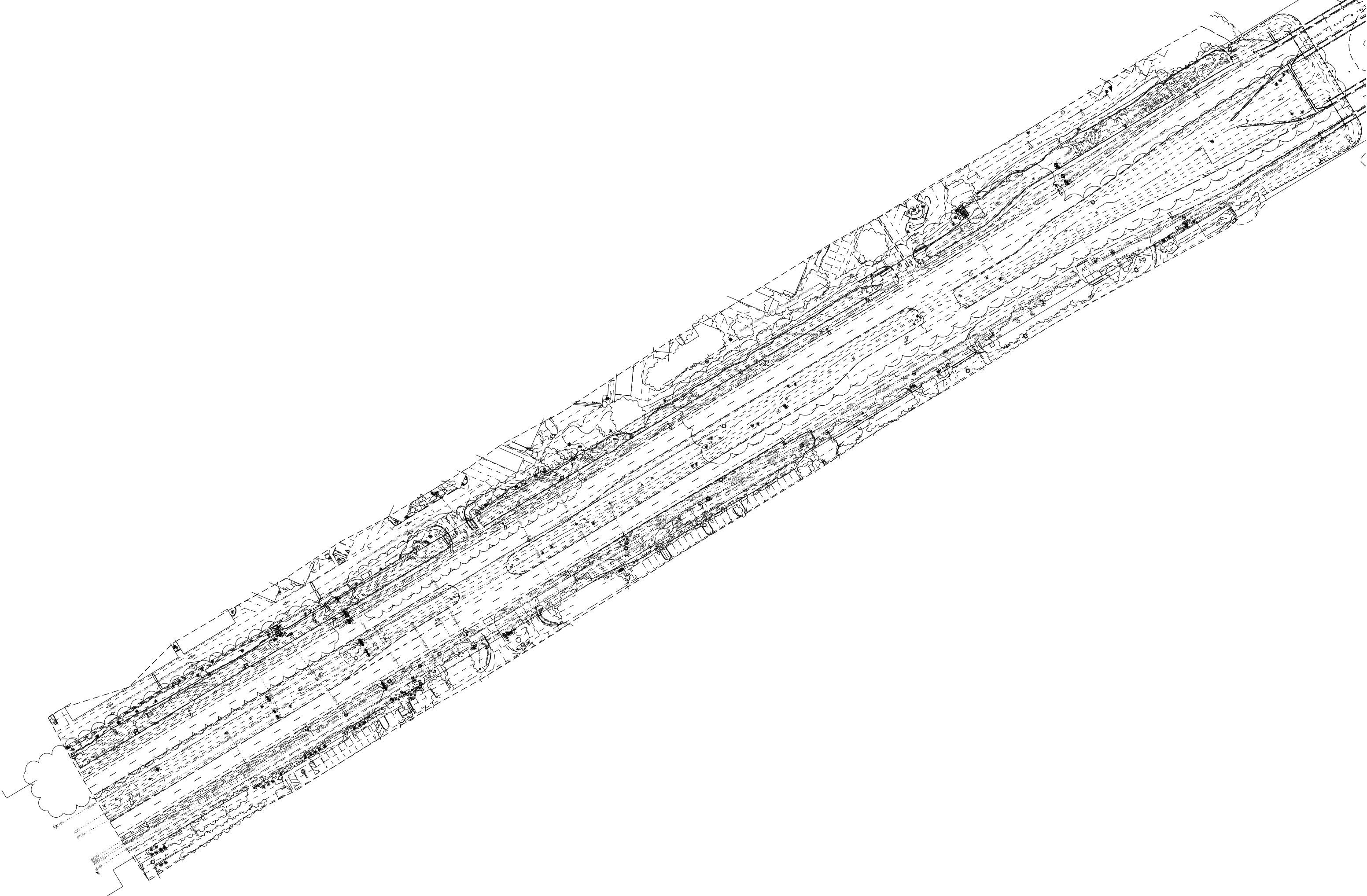
If you have any questions, please don't hesitate to contact this office for further details on criteria Please contact me at 813-781-5787 and by email at [JDean@HarborCoordination.com](mailto:JDean@HarborCoordination.com)

Sincerely,

  
By: Jeanna Dean  
Sr. Utility Coordinator

**For** M. Wayne Shelton  
District Utility Administrator

cc: File



CITY OF SARASOTA PARK  
(R/W MAP SECTION 17030-2509)

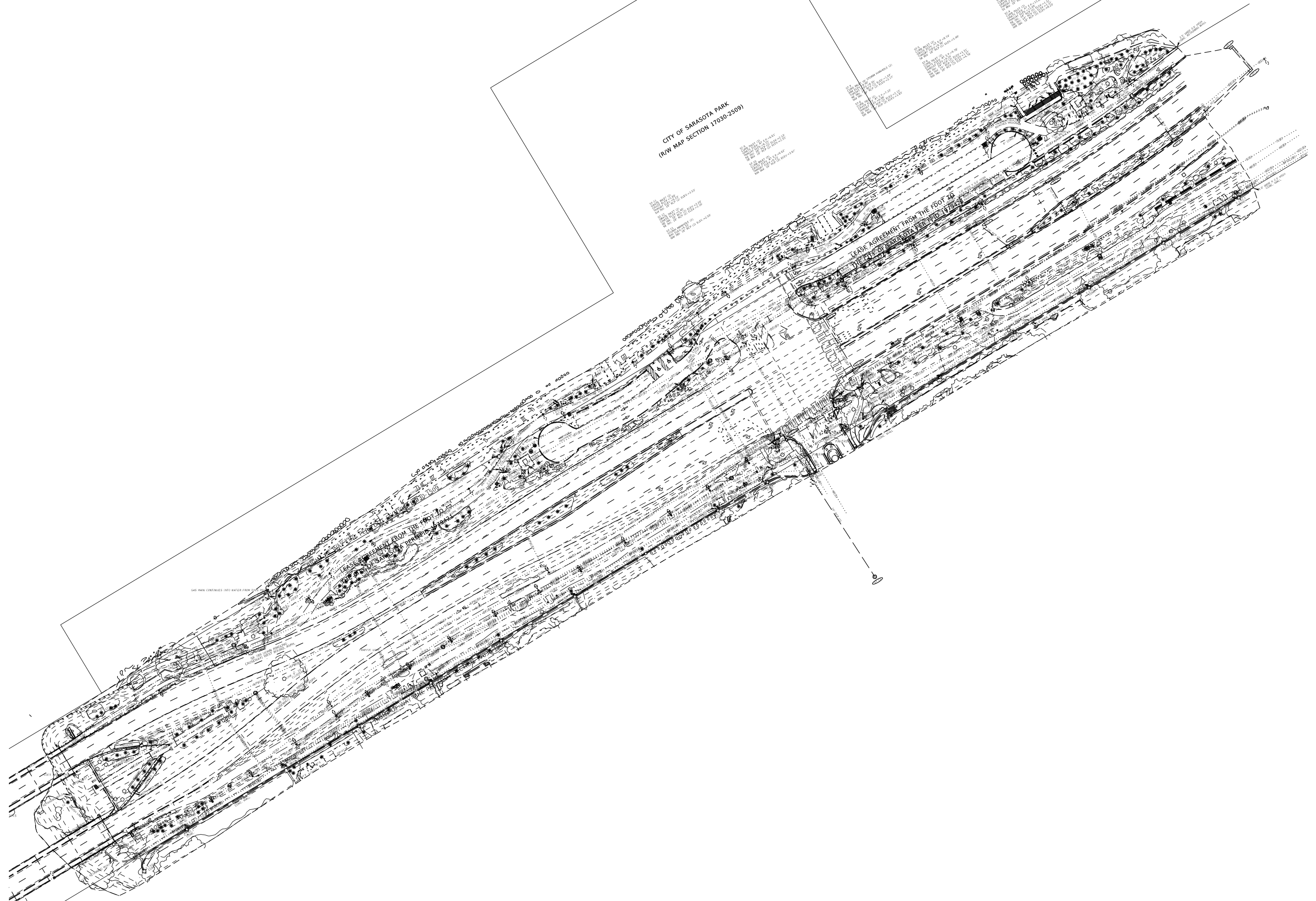
DATE: 08/11/10  
BY: [illegible]  
SCALE: AS SHOWN  
PROJECT: [illegible]

DATE: 08/11/10  
BY: [illegible]  
SCALE: AS SHOWN  
PROJECT: [illegible]

LEASE AGREEMENT FROM THE FOOT TO  
THE CITY OF SARASOTA PER: [illegible]

LEASE AGREEMENT FROM THE FOOT TO  
THE CITY OF SARASOTA PER: [illegible]

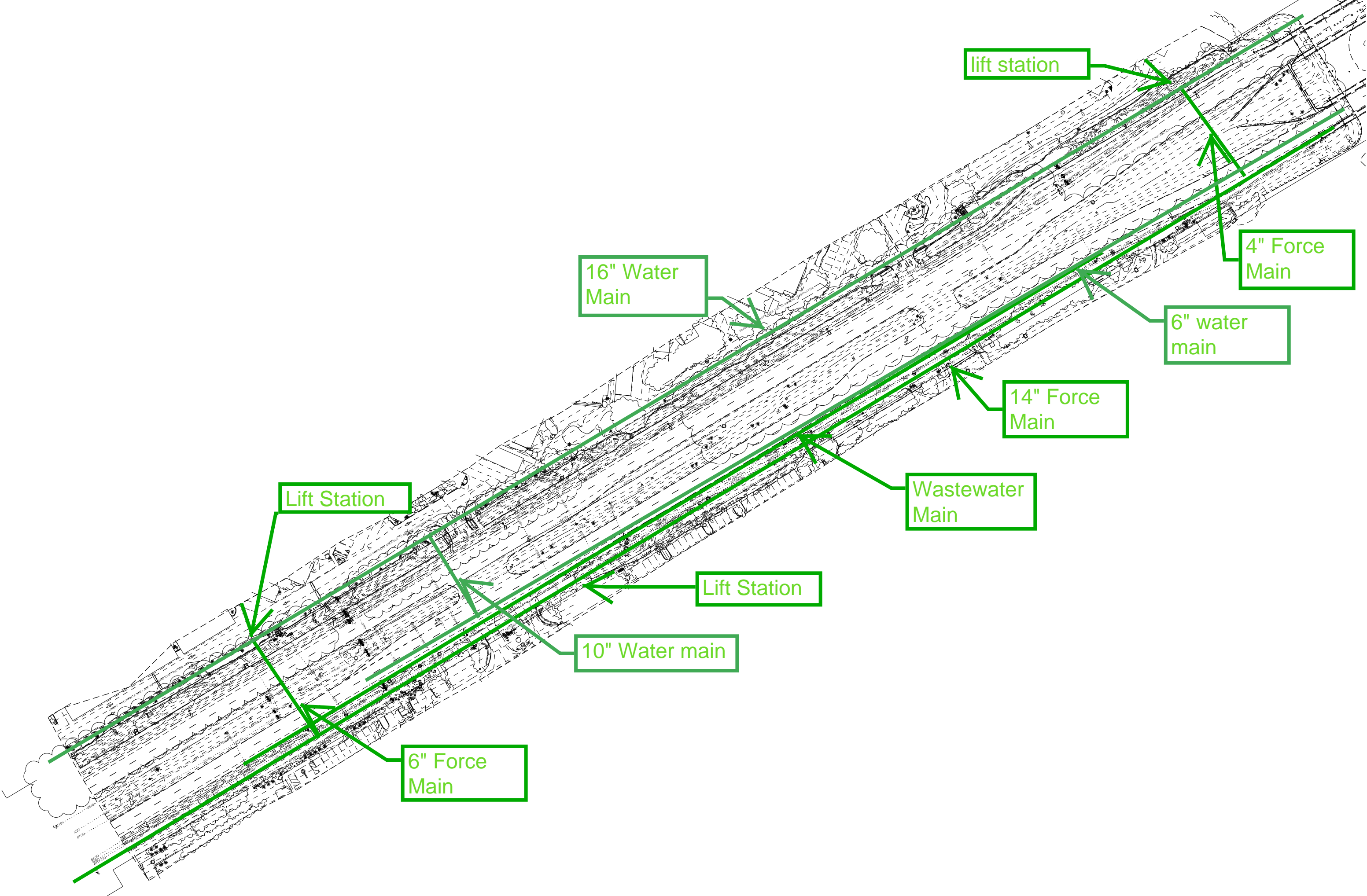
GAS MAIN CONTINUES INTO WATER FROM [illegible]



## **Appendix B**

### **Utility Responses**

## **City of Sarasota Utilities**



lift station

4" Force Main

6" water main

14" Force Main

Wastewater Main

Lift Station

Lift Station

10" Water main

6" Force Main

16" Water Main



CITY OF SARASOTA PARK  
(R/W MAP SECTION 17030-2509)

18" HDPE Water Main

16" Water Main

16" Water Main

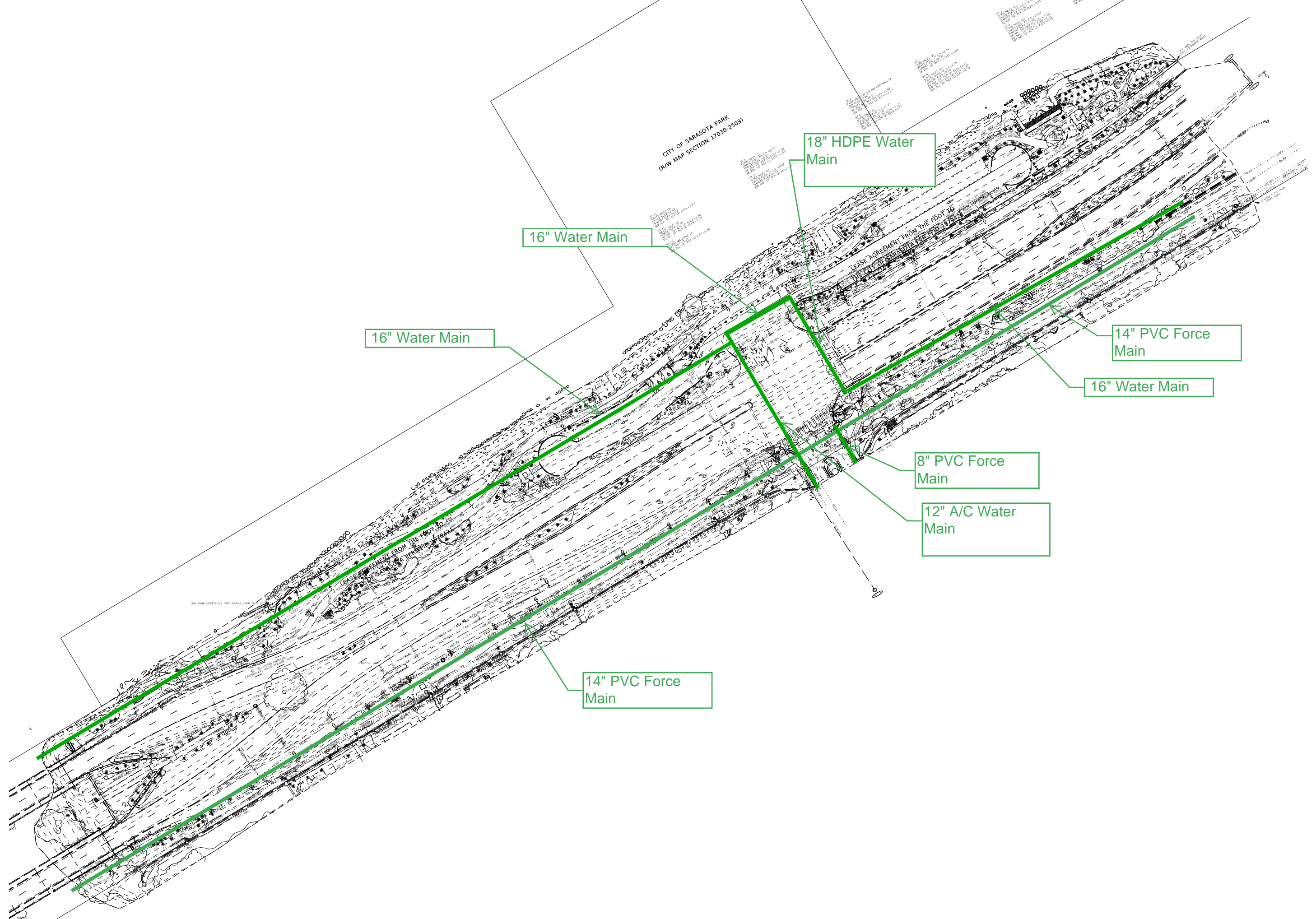
14" PVC Force Main

16" Water Main

8" PVC Force Main

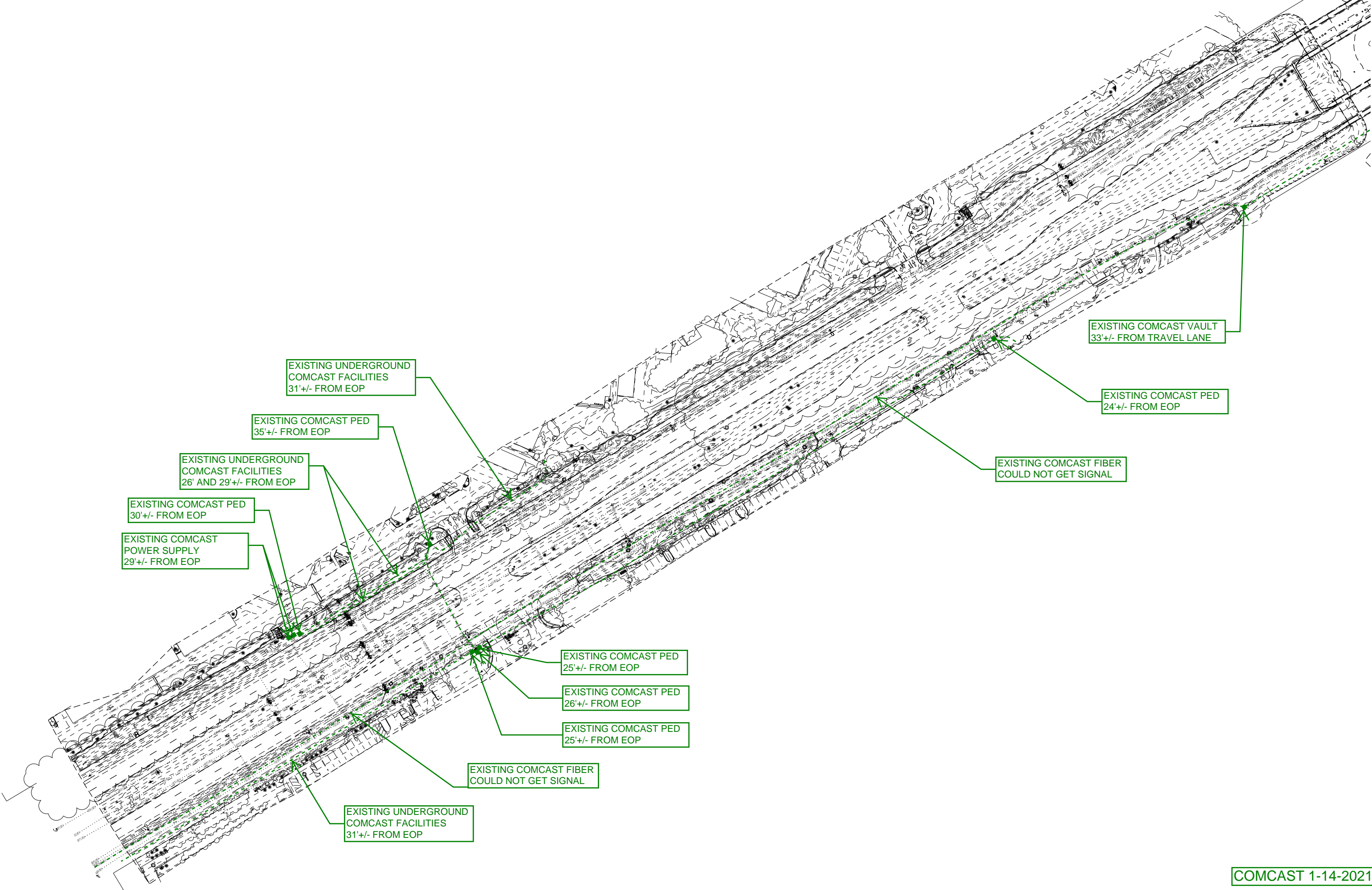
12" A/C Water Main

14" PVC Force Main



## **Comcast Communications**





EXISTING UNDERGROUND  
COMCAST FACILITIES  
31'+/- FROM EOP

EXISTING COMCAST PED  
35'+/- FROM EOP

EXISTING UNDERGROUND  
COMCAST FACILITIES  
26' AND 29'+/- FROM EOP

EXISTING COMCAST PED  
30'+/- FROM EOP

EXISTING COMCAST  
POWER SUPPLY  
29'+/- FROM EOP

EXISTING COMCAST PED  
25'+/- FROM EOP

EXISTING COMCAST PED  
26'+/- FROM EOP

EXISTING COMCAST PED  
25'+/- FROM EOP

EXISTING COMCAST FIBER  
COULD NOT GET SIGNAL

EXISTING UNDERGROUND  
COMCAST FACILITIES  
31'+/- FROM EOP

EXISTING COMCAST VAULT  
33'+/- FROM TRAVEL LANE

EXISTING COMCAST PED  
24'+/- FROM EOP

EXISTING COMCAST FIBER  
COULD NOT GET SIGNAL

CITY OF SARASOTA PARK  
(R/W MAP SECTION 17030-2509)

LEASE AGREEMENT FROM THE FOOT TO  
THE CITY OF SARASOTA PER PID 197927

EXISTING COMCAST FIBER  
COULD NOT GET SIGNAL

EXISTING COMCAST PED  
62'+/- FROM EOP

EXISTING UNDERGROUND  
COMCAST FACILITIES  
VARIES FROM EOP

EXISTING COMCAST PED  
62'+/- FROM EOP

EXISTING COMCAST PED  
47'+/- FROM EOP

EXISTING UNDERGROUND  
COMCAST FACILITIES  
VARIES FROM EOP

EXISTING COMCAST PED  
57'+/- FROM EOP

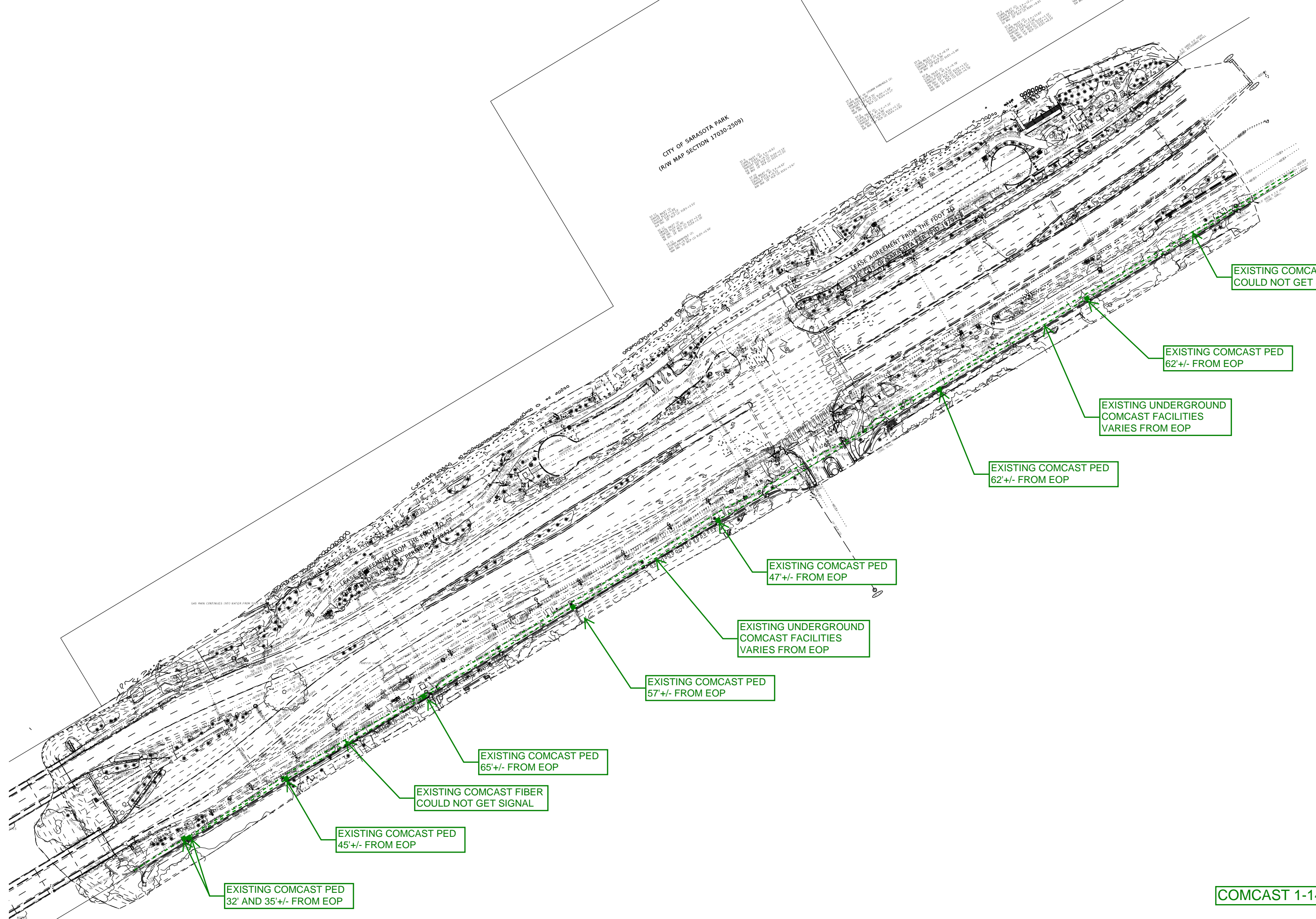
EXISTING COMCAST PED  
65'+/- FROM EOP

EXISTING COMCAST FIBER  
COULD NOT GET SIGNAL

EXISTING COMCAST PED  
45'+/- FROM EOP

EXISTING COMCAST PED  
32' AND 35'+/- FROM EOP

COMCAST 1-14-2021

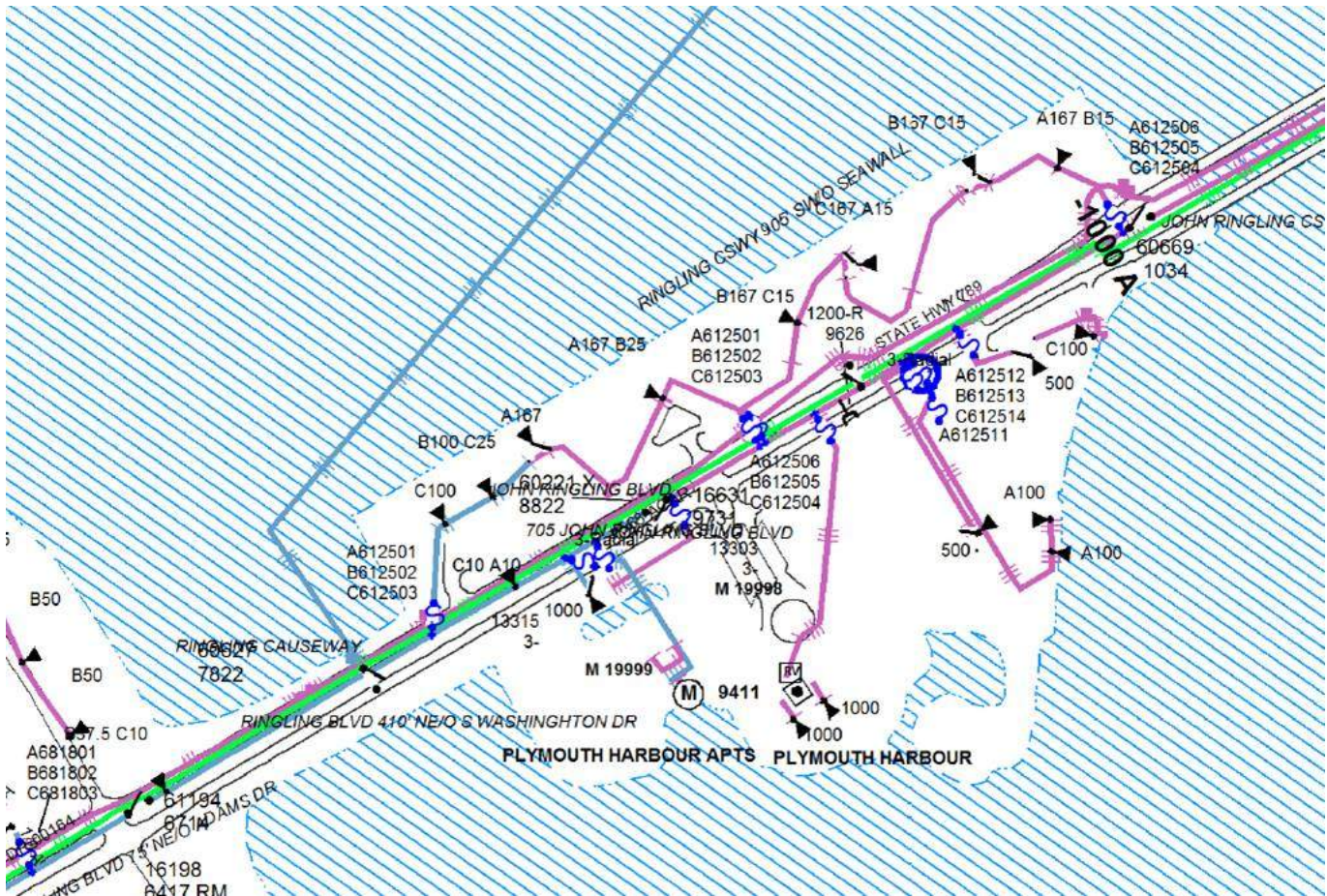


## **FP&L - Distribution**









## Greg Coker

**FLORIDA POWER & LIGHT - Distribution**

West Area Relocations Coordinator

1253 12th Avenue East

Palmetto, FL 34221

941-723-4430 (w)

941-704-9087 (c)

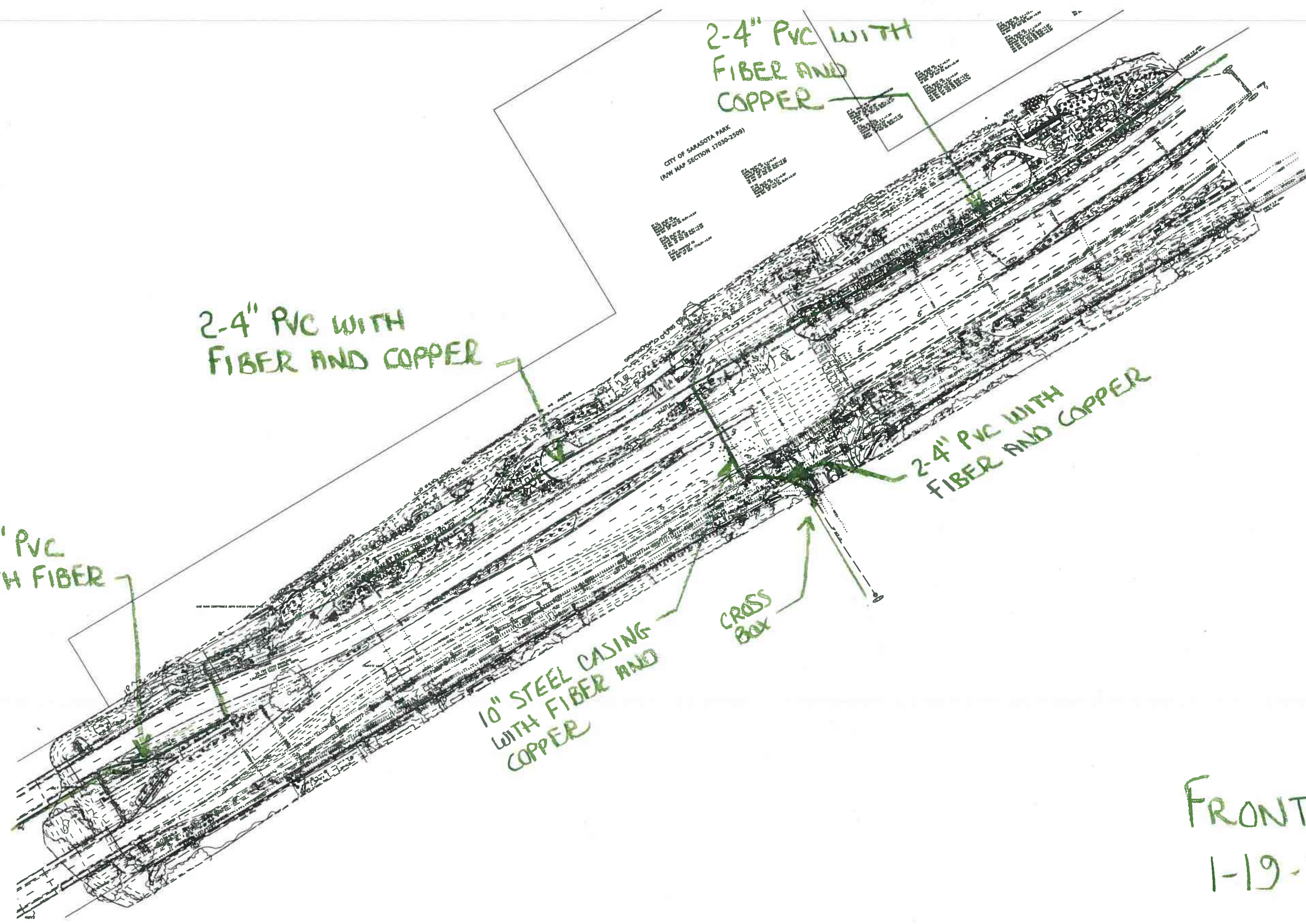
**“The two most important days in your life are the day you are born and the day you find out why”. Mark Twain**



Please contact me with any questions or concerns. If you cannot reach me, feel free to contact my Engineering Leader Kristy Salman at (o) 941-927-4262, (c) 941-321-3910 or [Kristy.Salman@FPL.com](mailto:Kristy.Salman@FPL.com). Visit the new FPL Project Portal at [FPL.com/construction](http://FPL.com/construction) to manage your FPL residential and commercial projects including milestones.

## **Frontier Communications**

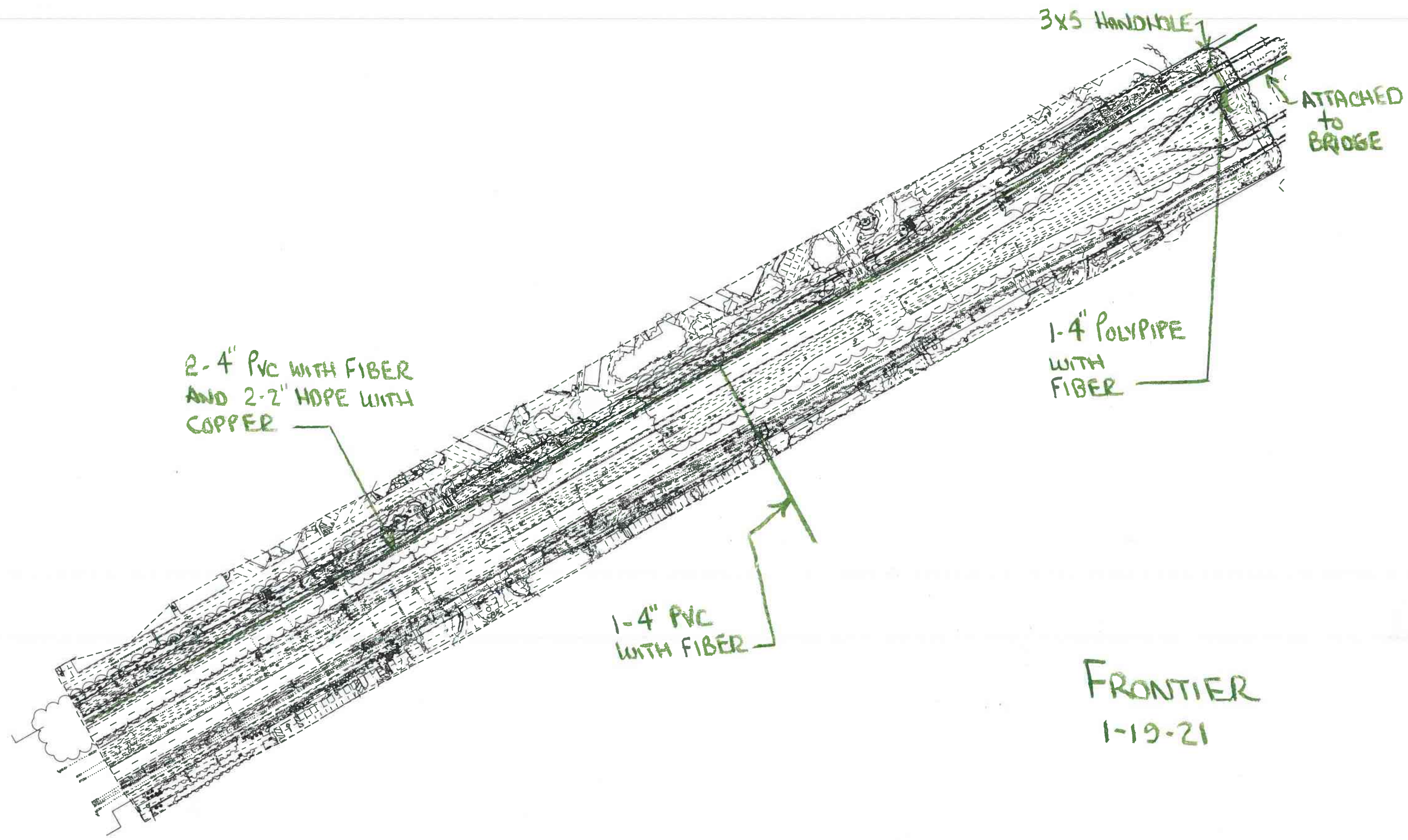




CITY OF SARASOTA PARK  
(AM MAP SECTION 17030-2500)

FRONTIER  
1-19-21





2-4" PVC WITH FIBER  
AND 2-2" HDPE WITH  
COPPER

3x5 HANDLE

ATTACHED  
TO  
BRIDGE

1-4" POLYPIPE  
WITH  
FIBER

1-4" PVC  
WITH FIBER

FRONTIER  
1-19-21



## **Longboat Key Utilities**

**From:** Heather Dean <Heather@HARBORCOORDINATION.COM>  
**Sent:** Monday, March 1, 2021 11:51 AM  
**To:** James Englert  
**Cc:** Sarah Cole  
**Subject:** FW: Past Due RE: FPID 436680-1-22-01 SR 789 Ringing from Bird Street (east) to Washington Dr (West) - Longboat Utilities Not Involved Response

Good morning James,

Please see below Longboat Utilities are not involved with this PD&E FPID 436680-1-22-01 SR 789 Ringing from Bird Street (east) to Washington Dr (West)

Sincerely,

**Heather Dean**  
Utility Coordinator

**A certified DBE/WMBE/SBE company**  
**Harbor Coordination Solutions, Inc.**  
2519 N. McMullen Booth Road  
Suite 510, #124  
Clearwater, FL 33761

Cell: 727-421-4447  
Email: [heather@harborcoordination.com](mailto:heather@harborcoordination.com)  
Website: [www.harbor-coordination.com](http://www.harbor-coordination.com)



---

**From:** Isaac Brownman <IBrownman@longboatkey.org>  
**Sent:** Monday, March 1, 2021 11:20 AM  
**To:** Heather Dean <Heather@HARBORCOORDINATION.COM>  
**Cc:** JEANNA DEAN <Jdean@HARBORCOORDINATION.COM>; LeonardSmalley@towngov.net; Bert Warner <BWarner@longboatkey.org>; John Michael <jmichael@longboatkey.org>  
**Subject:** RE: Past Due RE: FPID 436680-1-22-01 SR 789 Ringing from Bird Street (east) to Washington Dr (West) - SUBMITTAL ALERT PD&E - Due on 2-05-21

Good morning Heather,  
From a utility coordination standpoint, Longboat Key has no utility facilities in this area, and therefore, are not involved. Thank you!

**Isaac Brownman**  
Director | Town of Longboat Key Public Works  
600 General Harris Street  
Longboat Key, Florida 34228  
Ph. 941-316-1988 Ext. 2210

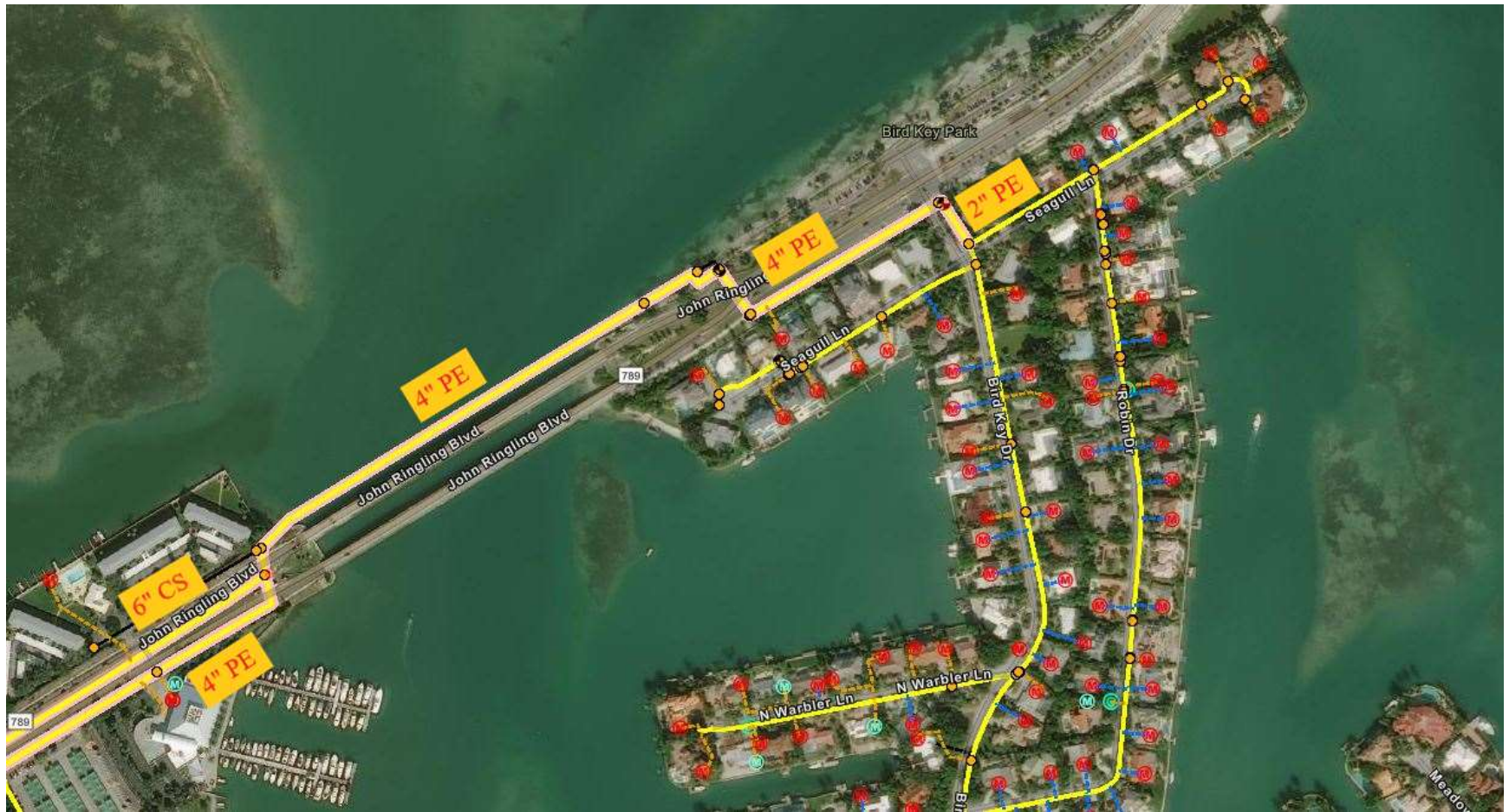
Cell 941-822-6876

[ibrownman@longboatkey.org](mailto:ibrownman@longboatkey.org)

*“Longboat Key is a beautiful place to live, work, and visit where the natural assets of a barrier island combine with cultural and recreational amenities, visionary planning, and proactive leadership to enhance your way of life.”*

*Note: Florida has a very broad public records law. Under Florida law, email addresses are considered public records. If you do not want your email address released in a response to a public records request, you should not send electronic email to this entity. Instead, you may wish to contact our office by phone or in writing. All written documents are also considered public record and open for inspection upon request.*

**TECO Peoples Gas**



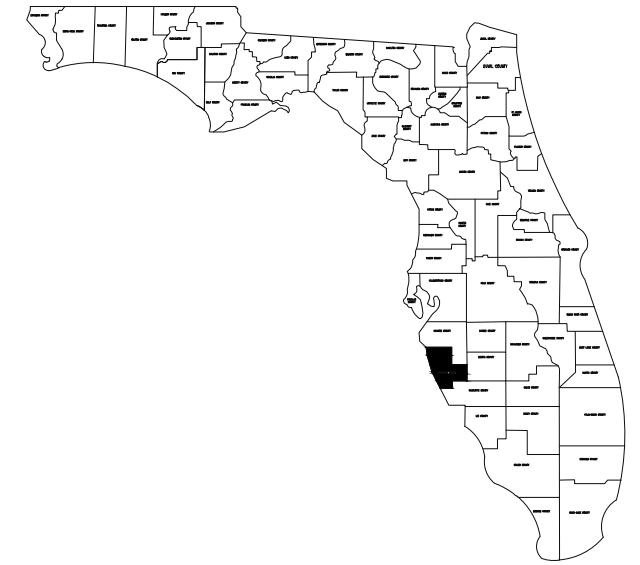
## **Verizon Business / MCI**





**MCI METRO ACCESS TRANSMISSION SERVICES**

**SITE NAME  
HUB 676 TO HUB 703  
FDEP/ACOE-2  
SARASOTA BAY - SR-789 -  
WEST OF BIRD KEY DR  
TMP\_SRCFH\_001**

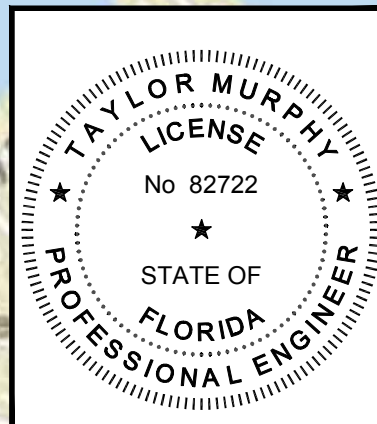


**SARASOTA, FLORIDA, 34236  
SARASOTA COUNTY  
OUTSIDE PLANT CONSTRUCTION  
FIBER OPTIC CABLE ROUTE  
TAMPA**



Digitally signed by Murphy, Taylor  
DN: CN="Murphy, Taylor",  
E=MurphyT@bv.com,  
O=Black Veatch, C=US  
Date: 2019.12.17  
15:30:27-06'00'

THIS ITEM HAS BEEN ELECTRONICALLY SIGNED AND SEALED BY TAYLOR MURPHY, P.E., ON THE TIME AND DATE STAMP SHOWN USING A DIGITAL SIGNATURE. PRINTED COPIES OF THIS DOCUMENT ARE NOT CONSIDERED SIGNED AND SEALED AND THE SIGNATURE MUST BE VERIFIED ON ANY ELECTRONIC COPIES.



IT IS A VIOLATION OF LAW FOR ANY PERSON, UNLESS THEY ARE ACTING UNDER THE DIRECTION OF A LICENSED PROFESSIONAL ENGINEER, TO ALTER THIS DOCUMENT

WORLD STREET MAP - SOURCES: ESRI, HERE, DELORME, USGS, INTERMAP, INCREMENT P, NRCAN, ESRI JAPAN, METI, ESRI CHINA (HONG KONG), ESRI KOREA, ESRI (THAILAND), MAPMYINDIA, NGCC, © OPENSTREETMAP CONTRIBUTORS, AND THE GIS USER COMMUNITY

WORLD STREET MAP - SOURCES: ESRI, HERE, DELORME, USGS, INTERMAP, INCREMENT P, NRCAN, ESRI JAPAN, METI, ESRI CHINA (HONG KONG), ESRI KOREA, ESRI (THAILAND), MAPMYINDIA, NGCC, © OPENSTREETMAP CONTRIBUTORS, AND THE GIS USER COMMUNITY



NOT TO SCALE

PROJECT NO:	194512				
DRAWN BY:	ETD				
CHECKED BY:	JNR				
APPROVED BY:	JAB				
REV	DATE				DESCRIPTION
0	12/16/19				ISSUED FOR PERMIT

SHEET TITLE  
TITLE SHEET

SHEET NUMBER  
**1 OF 13**





**GENERAL CONSTRUCTION NOTES**

- ALL ROUTE/SITE WORK SHALL BE COMPLETED AS INDICATED ON THE DRAWINGS.
- THE LOCATIONS OF EXISTING UNDERGROUND UTILITIES SHOWN IN THE DRAWINGS ARE APPROXIMATE ONLY AND SHALL BE VERIFIED BY THE CONTRACTOR BEFORE COMMENCING WORK. CONTRACTOR IS FULLY RESPONSIBLE FOR ANY AND ALL DAMAGES RESULTING FROM FAILURE TO EXACTLY LOCATE AND PRESERVE THE UNDERGROUND UTILITIES.
- ALL MATERIALS FURNISHED AND INSTALLED SHALL BE IN STRICT ACCORDANCE WITH ALL APPLICABLE CODES, REGULATIONS, AND ORDINANCES. GENERAL CONTRACTOR SHALL ISSUE ALL APPROPRIATE NOTICES AND COMPLY WITH ALL LAWS, ORDINANCES, RULES, REGULATIONS, AND LAWFUL ORDERS OF ANY PUBLIC AUTHORITY REGARDING THE PERFORMANCE OF WORK.
- THE CONTRACTOR SHALL INSTALL ALL EQUIPMENT AND MATERIALS IN ACCORDANCE WITH MANUFACTURER'S RECOMMENDATIONS UNLESS SPECIFICALLY STATED OTHERWISE.
- ALL WORK CARRIED OUT SHALL COMPLY WITH ALL APPLICABLE MUNICIPAL AND UTILITY COMPANY SPECIFICATIONS, STATE, LOCAL AND JURISDICTIONAL CODES, ORDINANCES, AND APPLICABLE REGULATIONS.
- CONTRACTOR SHALL BE RESPONSIBLE FOR THE SAFETY OF WORK AREA, ADJACENT AREAS AND BUILDING OCCUPANTS THAT ARE LIKELY TO BE AFFECTED BY THE WORK UNDER THIS CONTRACT. WORK SHALL CONFORM TO ALL OSHA REQUIREMENTS AND THE LOCAL JURISDICTION.
- CONTRACTOR SHALL RESTORE ALL DISTURBED AREAS WITHIN THE CONSTRUCTION SITE AS SHOWN ON THE DRAWINGS. IF NOT OTHERWISE SPECIFIED, ALL STREETS, DRIVEWAYS, FENCING, LANDSCAPING, AND OTHER EXISTING IMPROVEMENTS SHALL BE RETURNED TO A CONDITION EQUAL TO OR BETTER THAN EXISTED PRIOR TO CONSTRUCTION.
- PROVIDE AND MAINTAIN ALL TEMPORARY FENCING, BARRICADES, WARNING SIGNALS AND SIMILAR DEVICES NECESSARY TO PROTECT AGAINST THEFT FROM PROPERTY DURING THE ENTIRE PERIOD OF CONSTRUCTION. REMOVE ALL SUCH DEVICES UPON COMPLETION OF THE WORK.

**EXCAVATION NOTES**

- CALL 811 AT LEAST 72 HOURS IN ADVANCE OF ANY CONSTRUCTION FOR LOCATION MARKINGS.

**TRAFFIC CONTROL NOTES**

- CONTRACTOR SHALL PROVIDE TRAFFIC CONTROL MEASURES IN ACCORDANCE WITH FINAL TRAFFIC CONTROL PLANS, IF THE ROADWAY MUST BE CLOSED TO FACILITATE CONSTRUCTION ACTIVITIES ACCESS MUST BE MAINTAINED TO PRIVATE DRIVES AT ALL TIMES. CONTRACTOR SHALL NOTIFY PRIVATE DRIVE OWNERS A MINIMUM OF 7 DAYS PRIOR TO AFFECTING ACCESS TO DRIVES. OPEN CUT ROAD CROSSINGS SHALL BE AVOIDED WITHIN FLORIDA RIGHT-OF-WAY UNLESS APPROVED BY FLORIDA. NO OPEN CUT CROSSINGS WILL BE ALLOWED WITHIN OR ON INTERSTATES.
- CONTRACTOR MAY SUBMIT AN ALTERNATE TRAFFIC CONTROL PLAN TO THE ENGINEER, THE TRAFFIC CONTROL SUPERVISOR AND THE RIGHT-OF-WAY OWNER FOR THE ROADWAY FOR APPROVAL NO LESS THAN 21 DAYS IN ADVANCE OF THE PROPOSED ROADWAY CLOSURE. ANY COMMENTS RECEIVED ON THE PLAN FROM THE OWNER OR RIGHT-OF-WAY OWNER SHALL BE INCORPORATED INTO THE PLAN. THE PLAN SHALL BE PREPARED BY A TRAFFIC CONTROL SUPERVISOR SPECIFICALLY FOR THIS PROJECT AND SHALL BE SEALED AND SIGNED BY AN ENGINEER LICENSED IN THE STATE OF FLORIDA. THE COST TO PREPARE THE TRAFFIC CONTROL PLAN, SHALL BE MADE INCIDENTAL TO THE PROJECT.
- CONTRACTOR SHALL PROVIDE APPROPRIATE SIGNAGE, BARRICADES, FLAGMEN, ETC. REQUIRED TO MAINTAIN SAFE TRAFFIC FLOW AT ALL TIMES FOR ANY WORK ACTIVITY ON OR ADJACENT TO ANY CITY, COUNTY OR FLORIDA ROADWAY. ALL TRAFFIC CONTROL MEASURES SHALL BE IN ACCORDANCE WITH MUTCD MANUAL OF UNIFORM TRAFFIC CONTROL DEVICES (2009 EDITION)

**FIBER INSTALLATION NOTES**

- FIBER INSTALLATION AND CLEARANCES SHALL COMPLY WITH THE LATEST EDITION OF THE NATIONAL ELECTRIC SAFETY CODE AND PER JURISDICTIONAL REQUIREMENTS.

**CONTACTS**




FLORIDA DEPARTMENT OF ENVIRONMENTAL PROTECTION  
 ATTN: JON IGLEHART  
 SOUTH DISTRICT  
 P.O. BOX 2549  
 FORT MYERS, FLORIDA 33902-2549  
 (239) 344-5600  
 FAX (850) 412-0590

**ACOE NOTES**

- DIRECTIONAL BORING VAULTS, JUNCTION BOXES AND/OR PADS WILL NOT BE CONSTRUCTED WITHIN 50 FT OF THE TOP OF THE BANK OF WATERWAYS (RIVERS/STREAMS). HORIZONTAL DIRECTIONAL DRILLING PILOT, ENTRANCE, AND EXIT HOLES MUST BE THE MINIMUM DIAMETER NECESSARY; AND, MUST BE SET BACK FROM THE WATERWAY (RIVER/STREAM) BANK BY A MINIMUM OF 50 FT. EXCAVATED MATERIALS AND DRILLING MUD MUST BE STOCKPILED ON NON-WETLAND AREAS, WHERE AVAILABLE. APPROPRIATE FABRIC MUST BE PLACED BENEATH ALL MATERIALS STOCKPILED IN WETLANDS.
- EXCEPT AS NOTED IN SPECIAL CONDITIONS 18 AND 19, BELOW, ALL SUBAQUEOUS UTILITY AND/OR TRANSMISSION LINES AUTHORIZED BY THIS REGIONAL GENERAL PERMIT MUST BE INSTALLED A MINIMUM OF 6 FT BELOW THE BOTTOM CONTOUR OF ANY OTHER WATER OF THE UNITED STATES. THE 6-FT CRITERION APPLIES TO THE ENTIRE AUTHORIZED WIDTH OF THE CROSSING, PLUS A MINIMUM OF 10 FT ON EACH SIDE OF THE CROSSING.
- IN ALL FLORIDA COUNTIES, ALL SUBAQUEOUS UTILITY AND/OR TRANSMISSION LINES AUTHORIZED BY THIS REGIONAL GENERAL PERMIT MUST BE INSTALLED A MINIMUM OF 14 FT BELOW THE AUTHORIZED DEPTH OF ANY FEDERALLY-MAINTAINED SHALLOW-DRAFT NAVIGATION CHANNEL IT CROSSES. THE 14 FT CRITERION APPLIES TO THE ENTIRE AUTHORIZED WIDTH OF THE CHANNEL, PLUS A MINIMUM OF 25 FT OUTSIDE THE CHANNEL EDGES TO ALLOW FOR MAINTENANCE OF THE SIDE SLOPES. ANY ACTIVITY WITHIN FEDERAL RIGHTS-OF-WAY SHALL REQUIRE THE PERMITTEE TO ENTER INTO A CONSENT-TO-EASEMENT WITH THE REAL ESTATE DIVISION, U.S. ARMY CORPS OF ENGINEERS, JACKSONVILLE OR MOBILE DISTRICT, AS APPROPRIATE, PRIOR TO THE COMMENCEMENT OF ANY CONSTRUCTION ACTIVITY.
- ALL SUBAQUEOUS TRANSMISSION LINES CROSSING, OVER, UNDER, OR IN FLOOD CONTROL CHANNELS/CANALS IN FEDERAL PROJECTS (EITHER FEDERALLY OR LOCALLY MAINTAINED) WHICH ARE INSTALLED WITH HORIZONTAL DIRECTION DRILLING (HDD) SHALL ENSURE THE TOP OF THE HDD BORING IS A MINIMUM OF 10 FT BENEATH THE BOTTOM OF THE CHANNEL PLUS A MINIMUM 25 FT OUTSIDE THE CHANNEL EDGES AND THE ESTIMATED TOTAL DRILLING FLUID PRESSURE IS LESS THAN 10 PSI. PROJECTS NOT IN COMPLIANCE WITH THESE CRITERIA SHALL NOT BE ELIGIBLE FOR AUTHORIZATION UNDER SAF-14 UNTIL CASE SPECIFIC REVIEW HAS BEEN COMPLETED BY THE JACKSONVILLE DISTRICT ENGINEERING DIVISION IN ACCORDANCE WITH 33 U.S.C. 408 AND THE PROJECT HAS RECEIVED APPROVAL FROM THE JACKSONVILLE DISTRICT COMMANDER.
- THE PERMITTEE WILL INSTALL SIGNS AT THE SHORELINE TO NOTIFY NAVIGATIONAL INTERESTS OF THE LOCATION OF SUBAQUEOUS UTILITY AND TRANSMISSION LINES.
- TURBIDITY CONTROL MEASURES, INCLUDING BEST MANAGEMENT PRACTICES, SHALL BE USED THROUGHOUT CONSTRUCTION TO CONTROL EROSION AND SILTATION TO ENSURE THERE ARE NO VIOLATIONS OF STATE WATER QUALITY STANDARDS AS ESTABLISHED IN SECTIONS 62-4.242 AND 62-4.244 OF THE FLORIDA ADMINISTRATIVE CODE AND CHAPTERS 62-302, 62-520, 62-522, AND 62-550 OF THE FLORIDA ADMINISTRATIVE CODE.
- WHERE THE PROPOSED SUBAQUEOUS UTILITY OR TRANSMISSION LINE IS TO BE INSTALLED IN NAVIGABLE WATERS OF THE UNITED STATES, AT LEAST 2 WEEKS PRIOR TO THE START OF THE AUTHORIZED WORK PERMITTEE MUST NOTIFY THE NATIONAL OCEANIC AND ATMOSPHERIC ADMINISTRATION (NOAA) AND THE CORPS IN WRITING THAT THE WORK IS COMMENCING; AND, AGAIN, UPON COMPLETION OF THE WORK. THE PERMITTEE SHALL NOTIFY THE DISTRICT ENGINEER IN WRITING AT THE LETTERHEAD ADDRESS, ATTENTION REGULATORY DIVISION; AND, THE NOAA, EITHER IN MAILED CORRESPONDENCE TO THE NAUTICAL DATA BRANCH OFFICE OF THE COAST SURVEY N/CS26, 1315 EAST-WEST HIGHWAY, SILVER SPRING, MD 20910-3282 OR BY ELECTRONIC MAIL CORRESPONDENCE, WITH SCANS OF THE REQUISITE DOCUMENTS ATTACHED, THROUGH OSC.NDB@NOAA.GOV. THE POST-CONSTRUCTION NOTIFICATION WILL INCLUDE "AS-BUILT PLANS", SIGNED AND SEALED BY A REGISTERED SURVEYOR/ENGINEER LICENSED IN THE STATE OF FLORIDA, THAT CERTIFY THE PROJECT IS CONSTRUCTED AS AUTHORIZED; AND, MUST INCLUDE AN ACCURATE DEPICTION OF THE LOCATION AND CONFIGURATION OF THE COMPLETED ACTIVITY IN RELATION TO THE MEAN HIGH WATER OF THE NAVIGATABLE WATER.
- WITHIN 60 DAYS OF COMPLETION OF THE AUTHORIZED WORK, AND ANY MITIGATION REQUIRED, A SELF-CERTIFICATION STATEMENT OF COMPLIANCE (REFERENCE HTTP://WWW.SAJ.USACE.ARMY.MIL/MISSIONS/REGULATORY/SOURCEBOOK.ASPX) MUST BE COMPLETED AND SUBMITTED TO THE CORPS. THE FORM MUST REFERENCE THE SITE SPECIFIC DEPARTMENT OF THE ARMY PERMIT NUMBER ASSOCIATED WITH THE WORK. THE COMPLETED FORM CAN BE SUBMITTED ELECTRONICALLY TO (CESAJ-COMPLYDOCS@USACE.ARMY.MIL). OTHERWISE, IT MUST BE MAILED TO THE JACKSONVILLE DISTRICT, ENFORCEMENT SECTION, POST OFFICE 4970, JACKSONVILLE, FLORIDA 32232-0019.
- REDUCTION AND/OR ELIMINATION OF TURBID WATER CONDITIONS AND EROSION OF DISTURBED OR FILLED AREAS IN ADJACENT WATER BODIES AND WETLANDS ARE TO BE ACHIEVED THROUGH THE USE OF SILT CURTAINS, SILT SCREENS, OR OTHER APPROPRIATE EROSION CONTROL MEASURES, BETWEEN THE CONSTRUCTION AREA AND WETLANDS OR SURFACE WATERS, DURING PERIODS OF FILL PLACEMENT AND CONSTRUCTION. SUCH DEVICES SHALL BE PROPERLY MAINTAINED UNTIL SUCH TIME AS THOSE DISTURBED AREAS BECOME SUFFICIENTLY STABILIZED BY NATURAL RECRUITMENT OF VEGETATION OR OTHER MEASURES.
- SUBAQUEOUS UTILITY LINES INSTALLED VIA HORIZONTAL DIRECTION DRILLING (HDD) WITHIN A FEDERAL PROJECT MUST ENSURE THE TOP OF THE HDD BORING IS A MINIMUM OF 14 FT BENEATH THE BOTTOM OF ANY SHALLOW DRAFT NAVIGATION CHANNEL OR 10 FT BENEATH THE BOTTOM OF ANY FLOOD CONTROL CHANNEL, AND THE ESTIMATED TOTAL DRILLING FLUID PRESSURE IS LESS THAN 10 PSI.

THIS ITEM HAS BEEN ELECTRONICALLY SIGNED AND SEALED BY TAYLOR MURPHY, P.E., ON THE TIME AND DATE STAMP SHOWN USING A DIGITAL SIGNATURE. PRINTED COPIES OF THIS DOCUMENT ARE NOT CONSIDERED SIGNED AND SEALED AND THE SIGNATURE MUST BE VERIFIED ON ANY ELECTRONIC COPIES.

IT IS A VIOLATION OF LAW FOR ANY PERSON, UNLESS THEY ARE ACTING UNDER THE DIRECTION OF A LICENSED PROFESSIONAL ENGINEER, TO ALTER THIS DOCUMENT

		 <p><b>BLACK &amp; VEATCH</b>                      5206 Eagle Trail Drive                      Tampa, FL 33634                      (913) 458-2000</p>	<p>NOT TO SCALE</p>	PROJECT NO:	194512														
				DRAWN BY:	ETD														
				CHECKED BY:	EAS														
				APPROVED BY:	JAB														
						0	12/16/19	ISSUED FOR PERMIT											
						REV	DATE	DESCRIPTION											
													SHEET TITLE			SHEET NUMBER			
													GENERAL NOTES			3 OF 13			



END LOCATION  
 N: 27.325227  
 W: -82.564227  
 FDOT SECTION: 17030000  
 MP: 1.378

SEE SHEETS 5 AND 6 FOR  
 BRIDGE ATTACHMENT DETAIL

START LOCATION  
 N: 27.323320  
 W: -82.567706  
 FDOT SECTION: 17030000  
 MP: 1.621

**LEGEND**

- 30" x 60" x 30" HANDHOLE
- BORE PIT
- 24" x 36" x 30" HANDHOLE
- PROPOSED UNDERGROUND PATH
- PROPOSED BRIDGE ATTACHMENT
- ROW RIGHT OF WAY
- W WATER
- S WASTEWATER
- D STORM WATER
- R RECLAIMED WATER
- C COMMUNICATIONS
- G GAS
- E ELECTRICAL
- WATER UTILITY FEATURE
- WASTE WATER UTILITY FEATURE
- STORMWATER UTILITY FEATURE
- COMMUNICATIONS UTILITY FEATURE
- RECLAIMED WATER UTILITY FEATURE
- TRAFFIC CONTROL UTILITY FEATURE
- GAS UTILITY FEATURE
- ELECTRICAL UTILITY FEATURE
- PROPOSED UTILITY POLE
- EXISTING UTILITY POLE

**NOTES:**

1. RIGHT OF WAY DATA USED FOR PERMITTING PURPOSES ONLY.
2. ABOVE GROUND UTILITY FEATURES HAVE BEEN FIELD VERIFIED. ALL SUBSURFACE UTILITIES SHOWN ARE APPROXIMATE. UTILITY LOCATES MUST BE PERFORMED PRIOR TO CONSTRUCTION.
3. INFORMATION FOR EXISTING WATER, WASTEWATER, STORMWATER, RECLAIMED WATER, TRAFFIC CONTROL, GAS, AND ELECTRICAL UTILITIES PROVIDED BY SARASOTA COUNTY.
4. UNLESS OTHERWISE IMPRACTICAL, ALL BORES WILL BEGIN AND END AT A MINIMUM OF 8' FROM EDGE OF PAVEMENT.
5. MAINTAIN A 36" MINIMUM SEPARATION FROM ALL UTILITIES.
6. DRIVEWAYS, TREES, AND CULVERTS MUST BE DIRECTIONAL BORED.



THIS ITEM HAS BEEN ELECTRONICALLY SIGNED AND SEALED BY TAYLOR MURPHY, P.E., ON THE TIME AND DATE STAMP SHOWN USING A DIGITAL SIGNATURE. PRINTED COPIES OF THIS DOCUMENT ARE NOT CONSIDERED SIGNED AND SEALED AND THE SIGNATURE MUST BE VERIFIED ON ANY ELECTRONIC COPIES.

IT IS A VIOLATION OF LAW FOR ANY PERSON, UNLESS THEY ARE ACTING UNDER THE DIRECTION OF A LICENSED PROFESSIONAL ENGINEER, TO ALTER THIS DOCUMENT



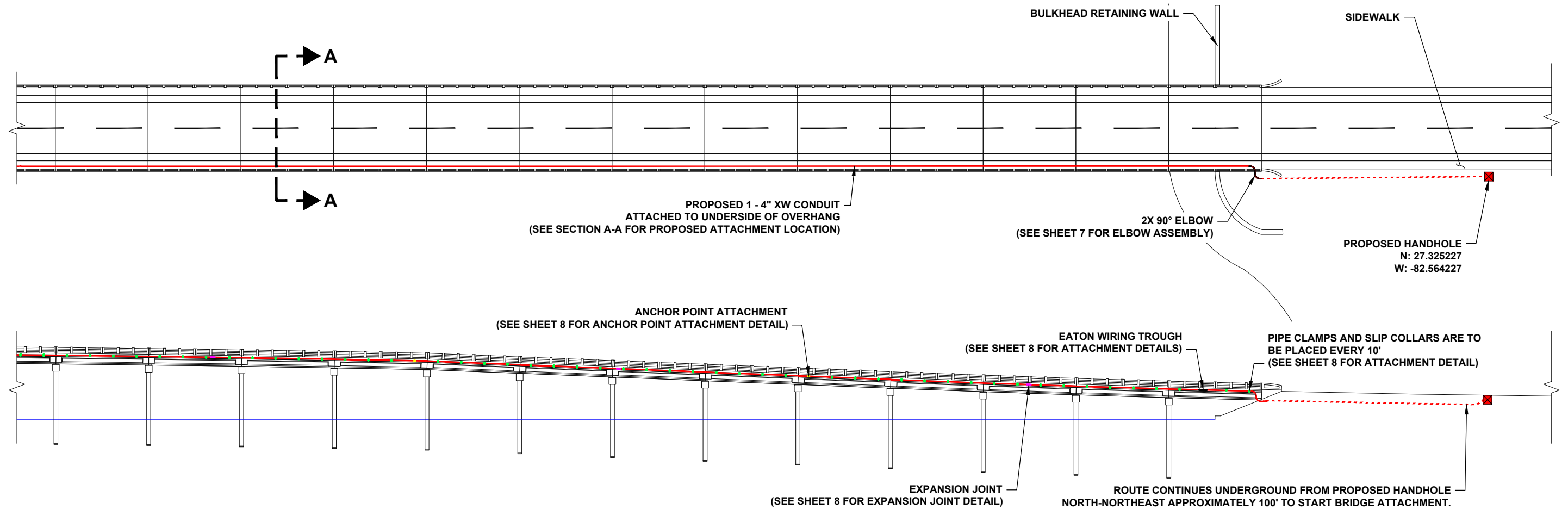
NOT TO SCALE

PROJECT NO:	194512				
DRAWN BY:	ETD				
CHECKED BY:	JNR				
APPROVED BY:	JAB				
REV	DATE	DESCRIPTION			
0	12/16/19	ISSUED FOR PERMIT			

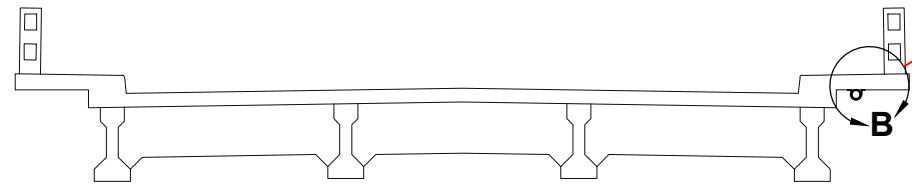
SHEET TITLE  
 FIBER INSTALLATION OVERVIEW

SHEET NUMBER  
 4 OF 13

NORTHERN PORTION OF THE NORTH BOUND JOHN RINGLING  
CAUSEWAY BRIDGE #170951

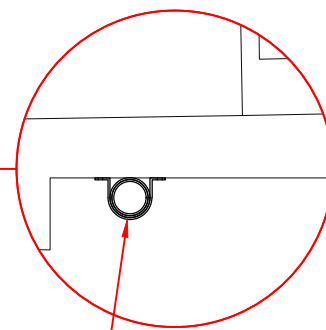


SECTION A-A  
TYPICAL ATTACHMENT  
SCALE: 1" = 8'



SECTION B-B  
SCALE: 1" = 2'

PROPOSED ATTACHMENT  
(SEE SHEET 8 FOR ATTACHMENT DETAILS)



THIS ITEM HAS BEEN ELECTRONICALLY SIGNED AND SEALED BY TAYLOR MURPHY, P.E., ON THE TIME AND DATE STAMP SHOWN USING A DIGITAL SIGNATURE. PRINTED COPIES OF THIS DOCUMENT ARE NOT CONSIDERED SIGNED AND SEALED AND THE SIGNATURE MUST BE VERIFIED ON ANY ELECTRONIC COPIES.



IT IS A VIOLATION OF LAW FOR ANY PERSON, UNLESS THEY ARE ACTING UNDER THE DIRECTION OF A LICENSED PROFESSIONAL ENGINEER, TO ALTER THIS DOCUMENT



SCALE: 1" = 45'

PROJECT NO:	194512
DRAWN BY:	ETD
CHECKED BY:	JNR
APPROVED BY:	JAB

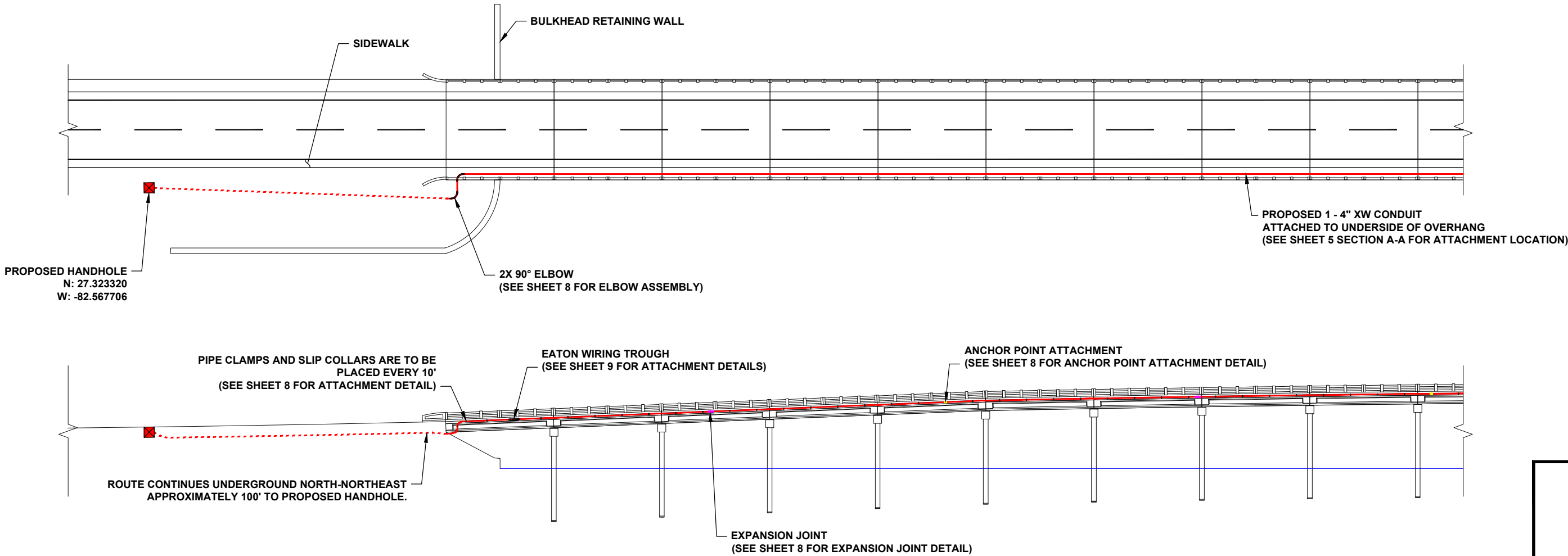
REV	DATE	DESCRIPTION
0	12/16/19	ISSUED FOR PERMIT

SHEET TITLE  
SOUTHERN PORTION OF  
BRIDGE #010035

SHEET NUMBER  
**5 OF 13**



**SOUTHERN PORTION OF THE NORTH BOUND JOHN RINGLING CAUSEWAY  
BRIDGE #170951**



THIS ITEM HAS BEEN ELECTRONICALLY SIGNED AND SEALED BY TAYLOR MURPHY, P.E., ON THE TIME AND DATE STAMP SHOWN USING A DIGITAL SIGNATURE. PRINTED COPIES OF THIS DOCUMENT ARE NOT CONSIDERED SIGNED AND SEALED AND THE SIGNATURE MUST BE VERIFIED ON ANY ELECTRONIC COPIES.

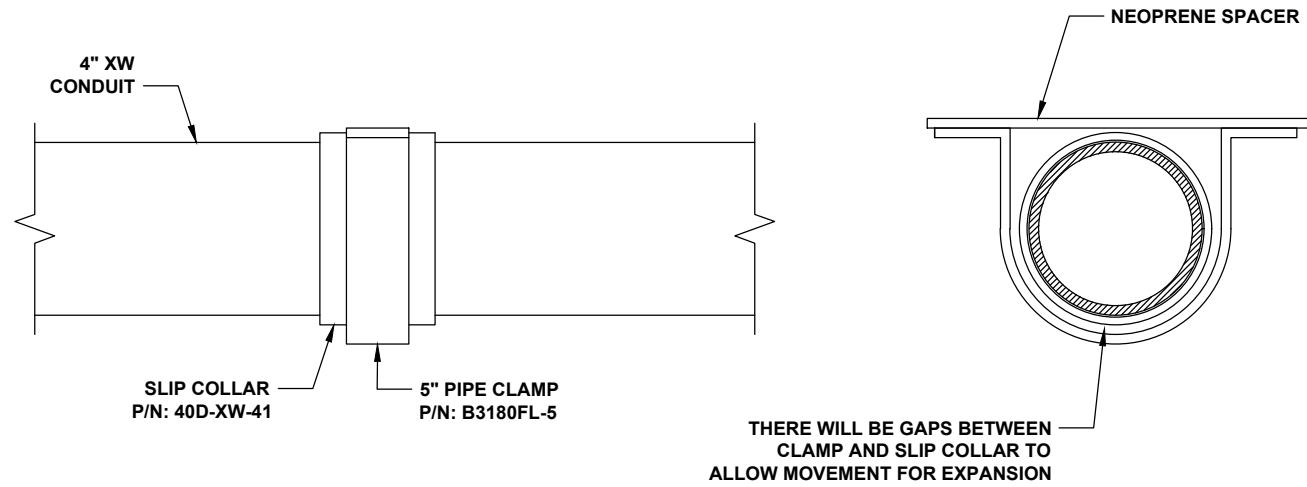


IT IS A VIOLATION OF LAW FOR ANY PERSON, UNLESS THEY ARE ACTING UNDER THE DIRECTION OF A LICENSED PROFESSIONAL ENGINEER, TO ALTER THIS DOCUMENT

	 MCI METRO ACCESS TRANSMISSION SERVICES	 5206 Eagle Trail Drive Tampa, FL 33634 (913) 458-2000	SCALE: 1" = 40'	PROJECT NO:	194512	SHEET TITLE NORTHERN PORTION OF BRIDGE #010035	SHEET NUMBER <b>6 OF 13</b>
				DRAWN BY:	ETD		
				CHECKED BY:	JNR		
				APPROVED BY:	JAB		
				REV	DATE	DESCRIPTION	
				0	12/16/19	ISSUED FOR PERMIT	

**NOTES:**

1. SLIP COLLARS NEED TO BE PLACED ON CONDUIT BEFORE THE FINAL ASSEMBLY OF A 20' SECTION.
2. ALL ASSEMBLY HARDWARE INCLUDING NUTS, BOLTS, WASHERS AND PIPE CLAMPS WILL BE EITHER GALVANIZED, TYPE 304 OR 316 STAINLESS STEEL, OR ENGINEERING APPROVED EQUIVALENT.
3. CHAMPION FIBERGLASS EPOXY ADHESIVE KIT P/N: CF-1070 WILL BE USED TO ATTACH SLIP COLLAR TO THE CONDUIT.
4. SEE SHEET 8 FOR CONDUIT STRAP BORE DETAIL.

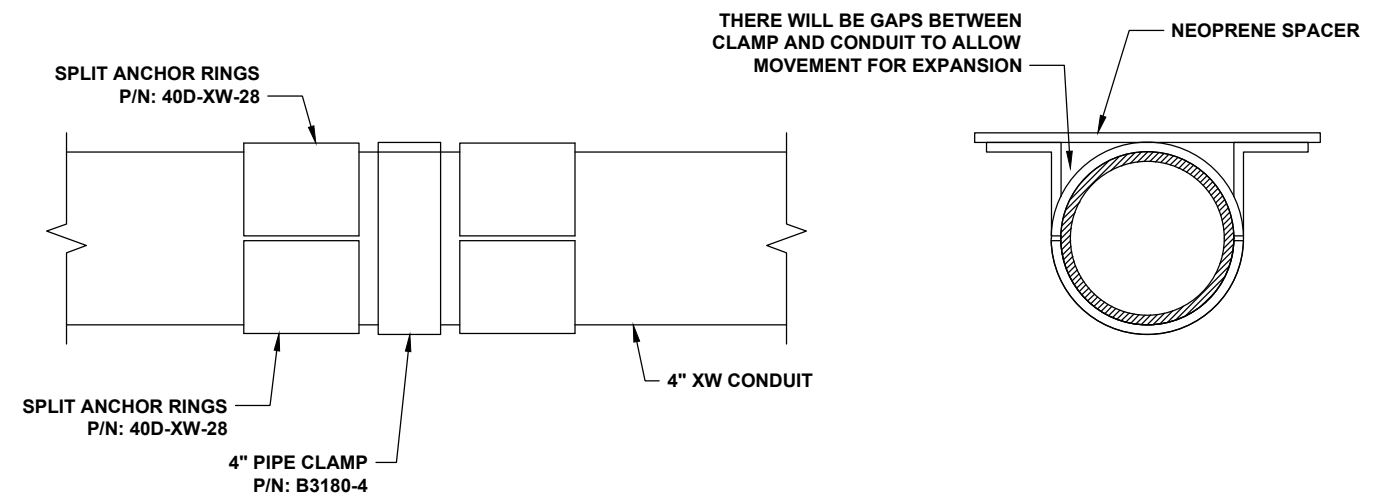


TYPICAL ATTACHMENT DETAIL

SCALE: 1" = 5"

**NOTES:**

1. SLIP COLLARS NEED TO BE PLACED ON CONDUIT BEFORE THE FINAL ASSEMBLY OF A 20' SECTION.
2. ALL ASSEMBLY HARDWARE INCLUDING NUTS, BOLTS, WASHERS AND PIPE CLAMPS WILL BE EITHER GALVANIZED, TYPE 304 OR 316 STAINLESS STEEL, OR ENGINEERING APPROVED EQUIVALENT.
3. CHAMPION FIBERGLASS EPOXY ADHESIVE KIT P/N: CF-1070 WILL BE USED TO ATTACH SLIP COLLAR AND SPLIT ANCHOR RINGS TO THE CONDUIT.
4. SEE SHEET 8 FOR CONDUIT STRAP BORE DETAIL.

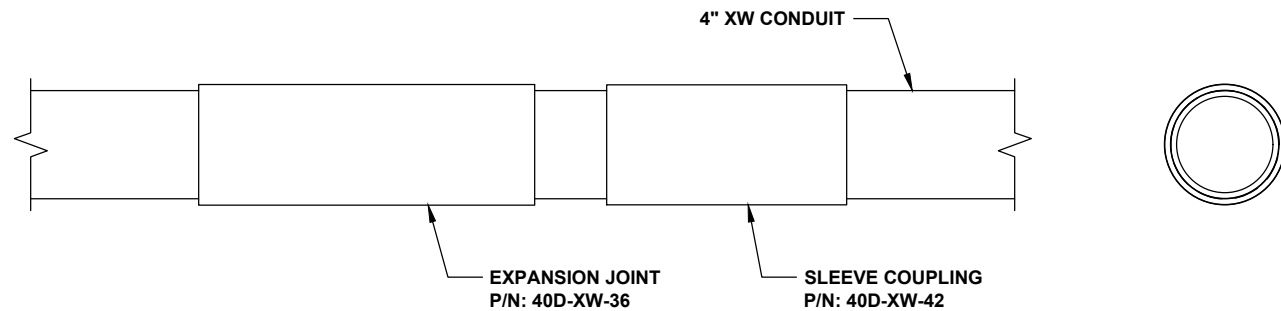


TYPICAL ANCHOR POINT ATTACHMENT DETAIL

SCALE: 1" = 5"

**NOTES:**

1. CHAMPION FIBERGLASS EPOXY ADHESIVE KIT P/N: CF-1070 WILL BE USED TO ATTACH SLEEVE COUPLING TO EXPANSION JOINT AND CONDUIT.

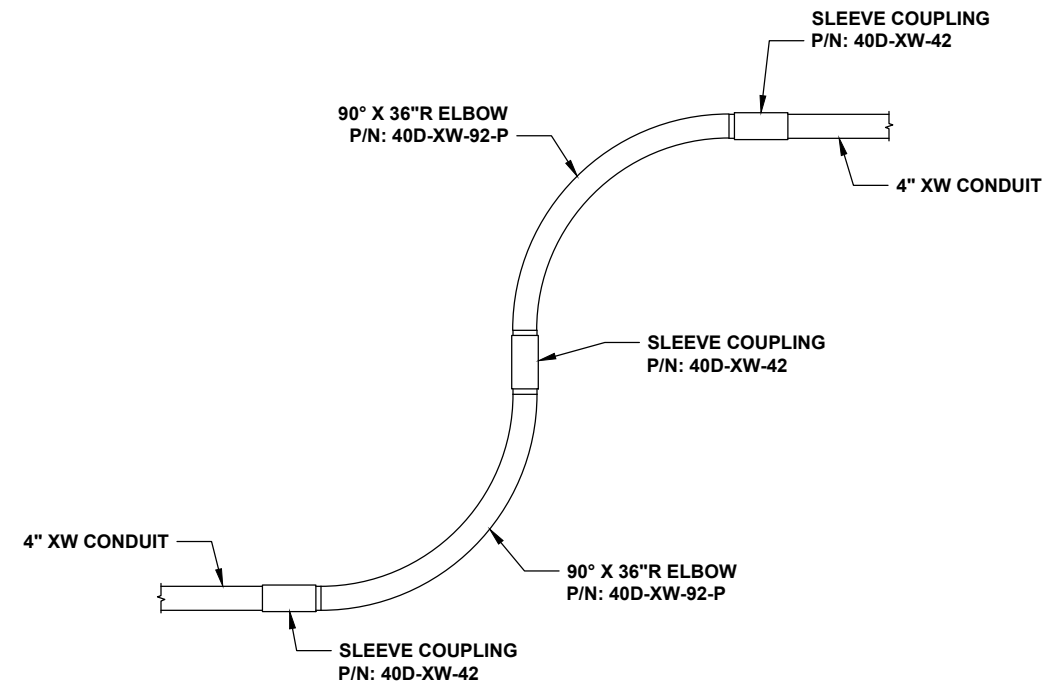


TYPICAL EXPANSION JOINT DETAIL

SCALE: 1" = 8"

**NOTES:**

1. CHAMPION FIBERGLASS EPOXY ADHESIVE KIT P/N: CF-1070 WILL BE USED TO ATTACH SLEEVE COUPLING TO ELBOW AND CONDUIT.



TYPICAL ELBOW ASSEMBLY

1" = 3'

THIS ITEM HAS BEEN ELECTRONICALLY SIGNED AND SEALED BY TAYLOR MURPHY, P.E., ON THE TIME AND DATE STAMP SHOWN USING A DIGITAL SIGNATURE. PRINTED COPIES OF THIS DOCUMENT ARE NOT CONSIDERED SIGNED AND SEALED AND THE SIGNATURE MUST BE VERIFIED ON ANY ELECTRONIC COPIES.

IT IS A VIOLATION OF LAW FOR ANY PERSON, UNLESS THEY ARE ACTING UNDER THE DIRECTION OF A LICENSED PROFESSIONAL ENGINEER, TO ALTER THIS DOCUMENT



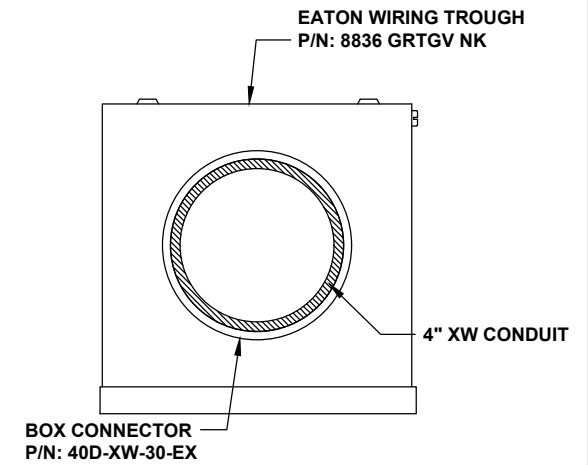
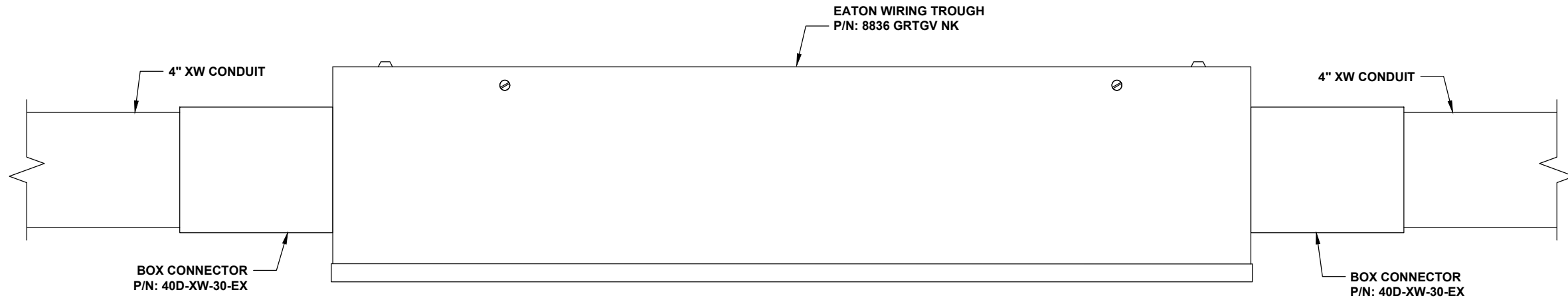
PROJECT NO:	194512				
DRAWN BY:	ETD				
CHECKED BY:	JNR				
APPROVED BY:	JAB	0	12/16/19	ISSUED FOR PERMIT	
		REV	DATE	DESCRIPTION	

SHEET TITLE  
ASSEMBLY DETAILS

SHEET NUMBER  
7 OF 13

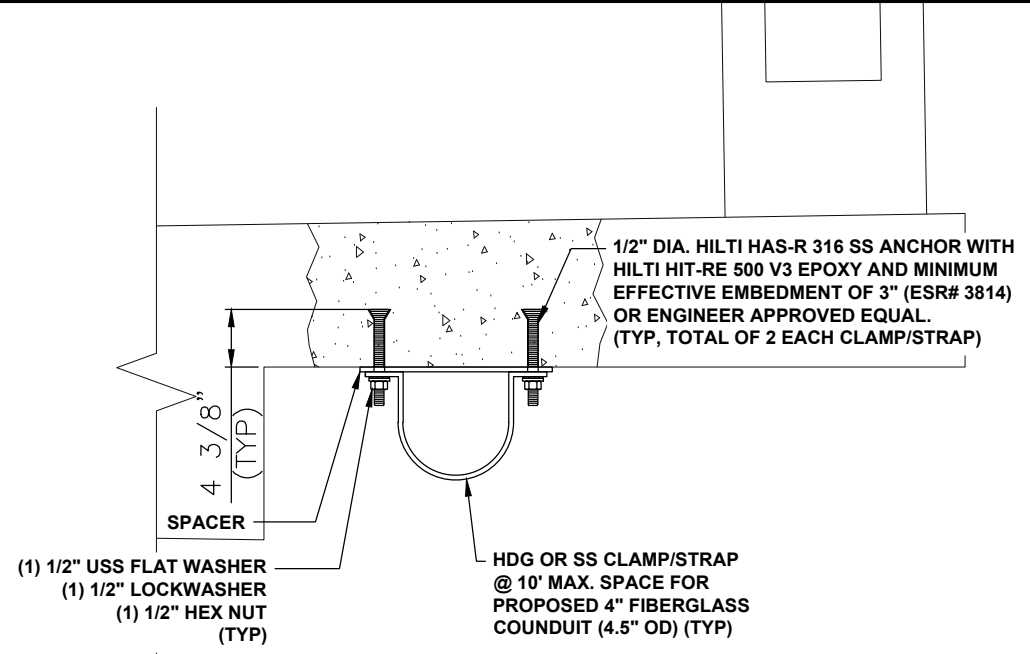
NOTES:

1. BOX CONNECTOR GOES INTO PUNCHED HOLE ON WIRING TROUGH.
2. ALL ASSEMBLY HARDWARE INCLUDING NUTS, BOLTS, AND WASHERS WILL BE EITHER GALVANIZED, TYPE 304 OR 316 STAINLESS STEEL, OR ENGINEERING APPROVED EQUIVALENT.
3. CHAMPION FIBERGLASS EPOXY ADHESIVE KIT P/N: CF-1070 WILL BE USED TO ATTACH BOX CONNECTOR TO THE CONDUIT AND WIRING TROUGH.
4. SEE BELOW FOR TYPICAL WIRING TROUGH BORE DETAIL.

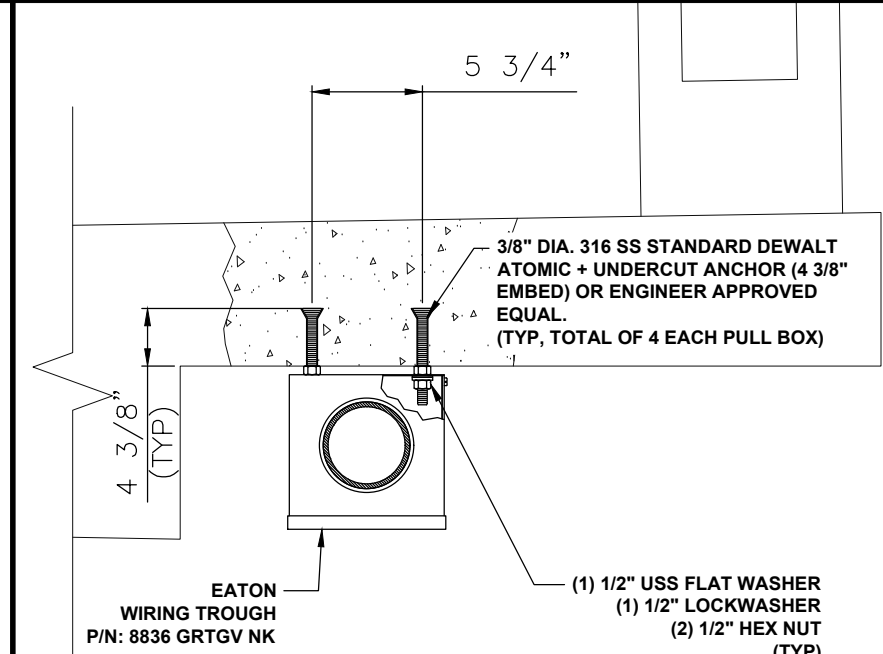


TYPICAL WIRING TROUGH ATTACHMENT DETAIL

SCALE: 1" = 5"



- (1) 1/2" USS FLAT WASHER
- (1) 1/2" LOCKWASHER
- (1) 1/2" HEX NUT (TYP)
- SPACER
- 4 3/8" (TYP)
- HDG OR SS CLAMP/STRAP @ 10' MAX. SPACE FOR PROPOSED 4" FIBERGLASS CONDUIT (4.5" OD) (TYP)



- 3/8" DIA. 316 SS STANDARD DEWALT ATOMIC + UNDERCUT ANCHOR (4 3/8" EMBED) OR ENGINEER APPROVED EQUAL. (TYP, TOTAL OF 4 EACH PULL BOX)
- 4 3/8" (TYP)
- EATON WIRING TROUGH P/N: 8836 GRTGV NK
- (1) 1/2" USS FLAT WASHER
- (1) 1/2" LOCKWASHER
- (2) 1/2" HEX NUT (TYP)

THIS ITEM HAS BEEN ELECTRONICALLY SIGNED AND SEALED BY TAYLOR MURPHY, P.E., ON THE TIME AND DATE STAMP SHOWN USING A DIGITAL SIGNATURE. PRINTED COPIES OF THIS DOCUMENT ARE NOT CONSIDERED SIGNED AND SEALED AND THE SIGNATURE MUST BE VERIFIED ON ANY ELECTRONIC COPIES.

TYPICAL CONDUIT STRAP BORE DETAIL

SCALE: 1" = 10"

TYPICAL WIRING TROUGH BORE DETAIL

SCALE: 1" = 10"

IT IS A VIOLATION OF LAW FOR ANY PERSON, UNLESS THEY ARE ACTING UNDER THE DIRECTION OF A LICENSED PROFESSIONAL ENGINEER, TO ALTER THIS DOCUMENT



PROJECT NO:	194512			
DRAWN BY:	ETD			
CHECKED BY:	JNR			
APPROVED BY:	JAB			
REV	DATE	DESCRIPTION		
0	12/16/19	ISSUED FOR PERMIT		

SHEET TITLE  
ASSEMBLY & BORE  
DETAILS

SHEET NUMBER  
**8 OF 13**

## **Appendix C**

### **PD&E Recommended Alternative Plans**



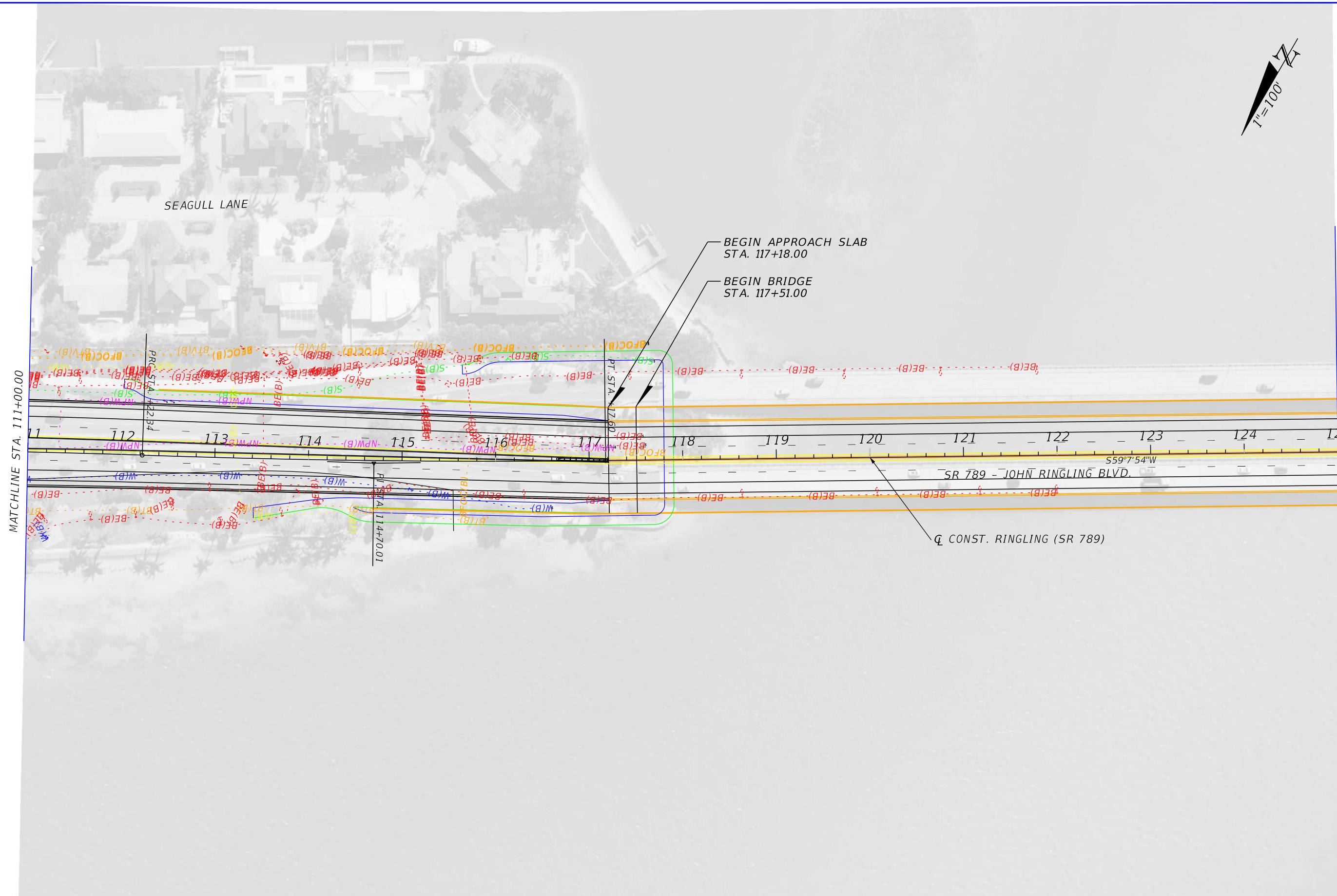
1/31/2024 11:31:16 AM mlarson c:\hprprod\ams2318\PLPRRD02\_Utlis.dgn.dgn

REVISIONS				ENGINEER OF RECORD		STATE OF FLORIDA DEPARTMENT OF TRANSPORTATION			SHEET NO.
DATE	DESCRIPTION	DATE	DESCRIPTION	JAMES W. ENGLERT, P.E. LICENSE NUMBER: 44968 HARDESTY & HANOVER 5110 EISENHOWER BOULEVARD, SUITE 310 TAMPA, FL 33634		ROAD NO.	COUNTY	FINANCIAL PROJECT ID	
						789	SARASOTA	436680-1-22-01 436680-1-32-01	1

**EXISTING UTILITIES (1)**

THE OFFICIAL RECORD OF THIS SHEET IS THE ELECTRONIC FILE DIGITALLY SIGNED AND SEALED UNDER RULE 61G15-23.004, F.A.C.





1/31/2024 11:31:19 AM mlarson c:\hprprod\mms2318\PLPRRD02\_Utills.dgn

REVISIONS				ENGINEER OF RECORD		STATE OF FLORIDA DEPARTMENT OF TRANSPORTATION			SHEET NO.
DATE	DESCRIPTION	DATE	DESCRIPTION	JAMES W. ENGLERT, P.E. LICENSE NUMBER: 44968 HARDESTY & HANOVER 5110 EISENHOWER BOULEVARD, SUITE 310 TAMPA, FL 33634		ROAD NO.	COUNTY	FINANCIAL PROJECT ID	
						789	SARASOTA	436680-1-22-01 436680-1-32-01	2

**EXISTING UTILITIES (2)**

THE OFFICIAL RECORD OF THIS SHEET IS THE ELECTRONIC FILE DIGITALLY SIGNED AND SEALED UNDER RULE 61G15-23.004, F.A.C.



1/31/2024 11:31:23 AM mlarson c:\hnp\prod\ams2318\PLPRRD02\_Utlis.dgn.dgn

REVISIONS			
DATE	DESCRIPTION	DATE	DESCRIPTION

ENGINEER OF RECORD  
 JAMES W. ENGLERT, P.E.  
 LICENSE NUMBER: 44968  
 HARDESTY & HANOVER  
 5110 EISENHOWER BOULEVARD, SUITE 310  
 TAMPA, FL 33634

STATE OF FLORIDA DEPARTMENT OF TRANSPORTATION		
ROAD NO.	COUNTY	FINANCIAL PROJECT ID
789	SARASOTA	436680-1-22-01 436680-1-32-01

**EXISTING UTILITIES (3)**

SHEET NO.  
3

THE OFFICIAL RECORD OF THIS SHEET IS THE ELECTRONIC FILE DIGITALLY SIGNED AND SEALED UNDER RULE 61G15-23.004, F.A.C.





MATCHLINE STA. 139+00.00

END PROJECT  
STA. 147+00.00

CONST. RINGLING (SR 789)

SR 789 - JOHN RINGLING BLVD.

1/31/2024 11:31:29 AM mlarson  
c:\hnp\prod\ms2318\PLPRRD02\_Utlis.dgn

REVISIONS				ENGINEER OF RECORD		STATE OF FLORIDA DEPARTMENT OF TRANSPORTATION			SHEET NO.
DATE	DESCRIPTION	DATE	DESCRIPTION	JAMES W. ENGLERT, P.E. LICENSE NUMBER: 44968 HARDESTY & HANOVER 5110 EISENHOWER BOULEVARD, SUITE 310 TAMPA, FL 33634		ROAD NO.	COUNTY	FINANCIAL PROJECT ID	
						789	SARASOTA	436680-1-22-01 436680-1-32-01	4

**EXISTING UTILITIES (4)**

THE OFFICIAL RECORD OF THIS SHEET IS THE ELECTRONIC FILE DIGITALLY SIGNED AND SEALED UNDER RULE 61G15-23.004, F.A.C.