



Project Plan View 3

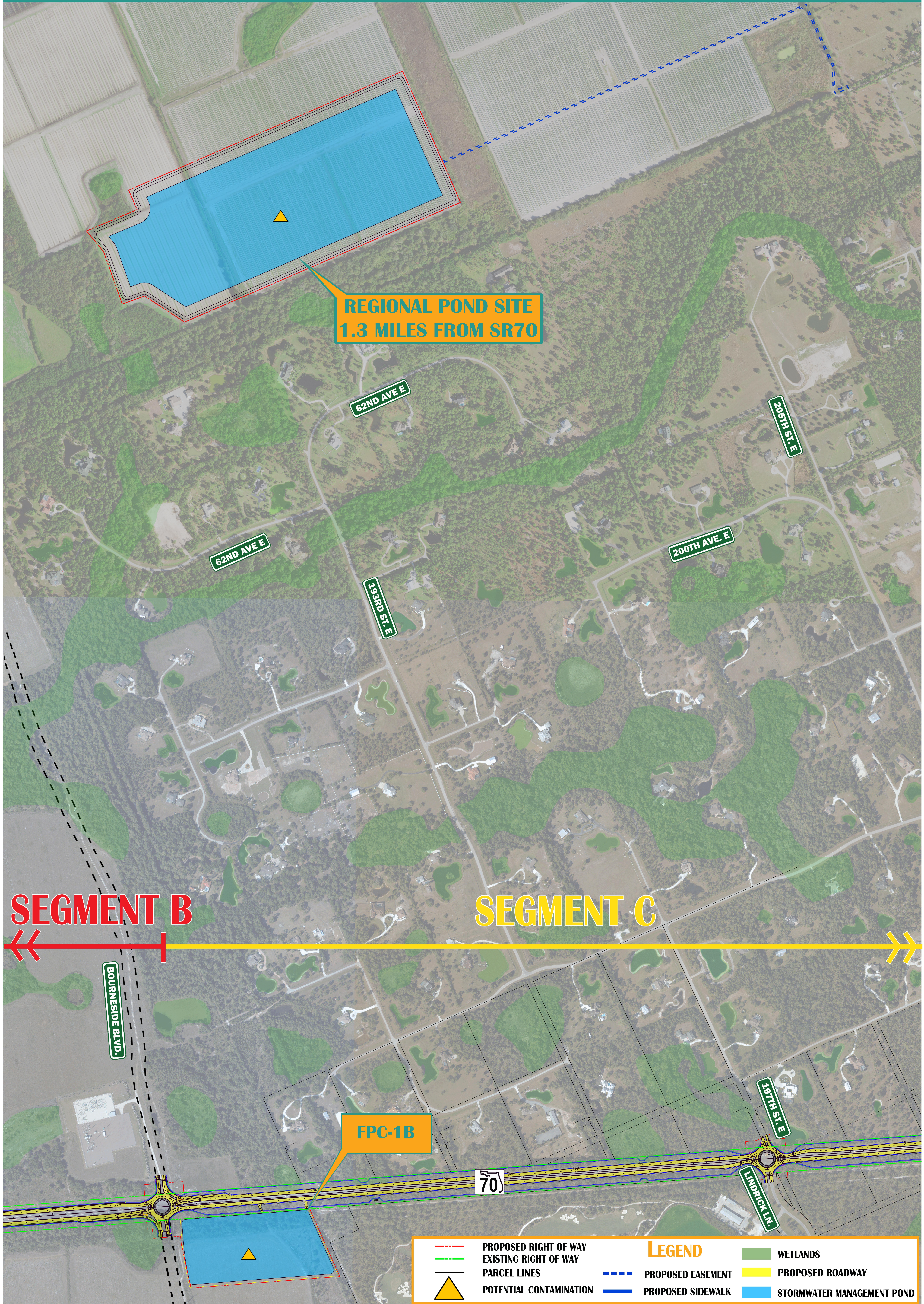
Public Hearing ♦ August 6, 2019

SR 70 from Lorraine Road to CR 675
Manatee County, Florida

FPID Nos. 414506-2-22-01 & 414506-2-32-01



Scale 1"=200'



REGIONAL POND SITE
1.3 MILES FROM SR70

62ND AVE E

200TH AVE E

62ND AVE E

200TH AVE E

193RD ST E

SEGMENT B

SEGMENT C

BOURNSIDE BLVD

FPC-1B

70

191TH ST E

LINDRICK LN

LEGEND			
	PROPOSED RIGHT OF WAY		WETLANDS
	EXISTING RIGHT OF WAY		PROPOSED ROADWAY
	PARCEL LINES		STORMWATER MANAGEMENT POND
	POTENTIAL CONTAMINATION		PROPOSED EASEMENT
			PROPOSED SIDEWALK