



# ***Welcome!***

to the

## **SR 758 at Beach Road**

### **Intersection Improvements**

### **PD&E Study**

## **Public Information Workshop**

## **March 10, 2015**



**FPID: 434491-1-52-01**





# TITLE VI COMPLIANCE

This meeting, project, or study is being conducted without regard to race, color, national origin, age, sex, religion, disability or family status. Persons wishing to express their concerns relative to FDOT compliance with Title VI may do so by contacting:

## **District One**

Jamie Schley

District 1 Title VI Coordinator

801 North Broadway Avenue

Bartow, FL 33830

(863) 519-2573

Jamie.Schley@dot.state.fl.us

## **Tallahassee Office**

Jacqueline Paramore

Statewide Title VI Coordinator

605 Suwannee Street, MS 65

Tallahassee, FL 32399-0450

(850) 414-4753

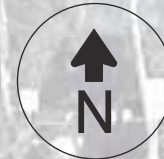
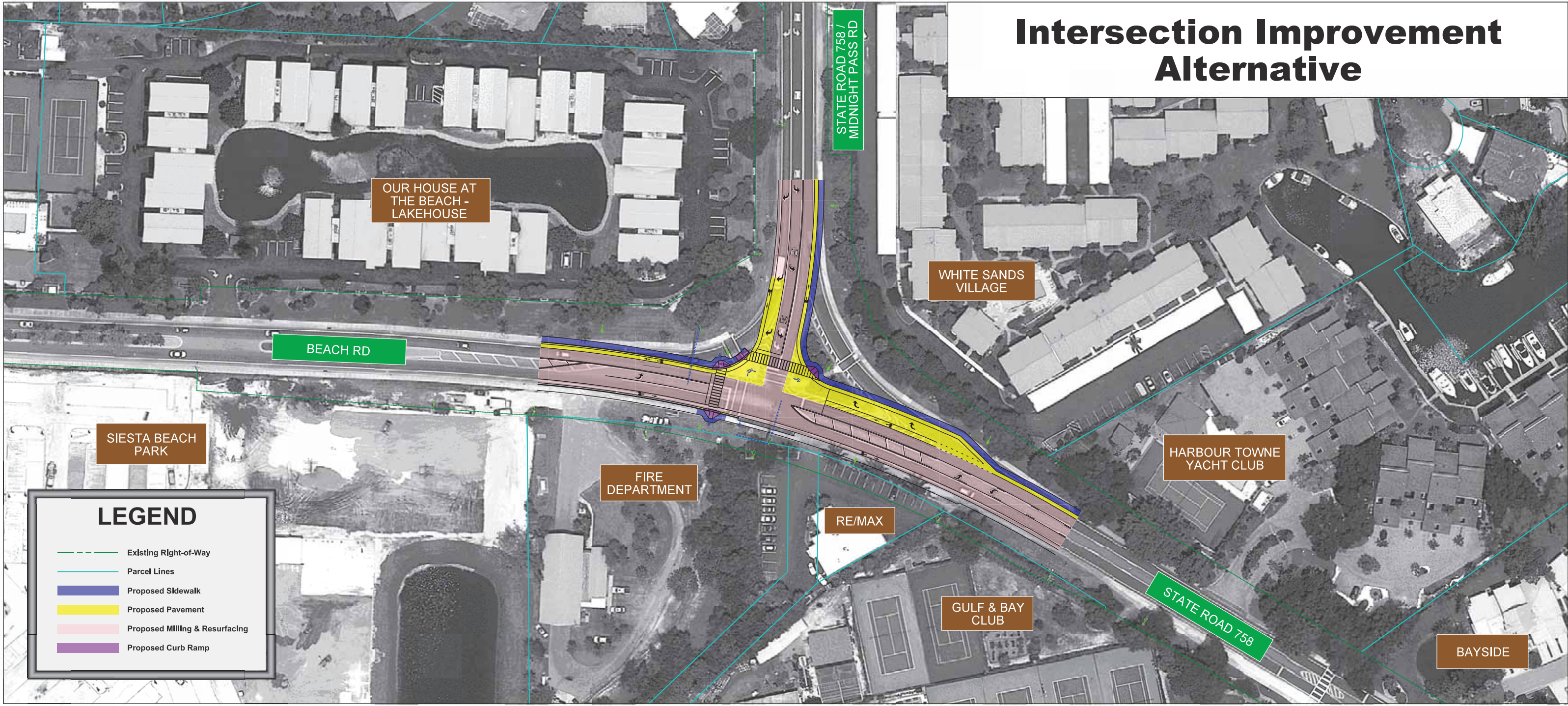
Jacqueline.Paramore@dot.state.fl.us

All inquiries or complaints will be handled according to FDOT procedure and in a prompt and courteous manner.



**SR 758 at Beach Road  
Intersection Improvements PD&E Study  
FPID: 434491-1-52-01**

# Intersection Improvement Alternative



1" = 40'  
Aerial Flight Date: 2014

## SR 758 at Beach Road Intersection Improvements PD&E Study

FPID: 434491-1-52-01

# INTERSECTION IMPROVEMENTS ALTERNATIVE



Aerial view of intersection improvement concepts

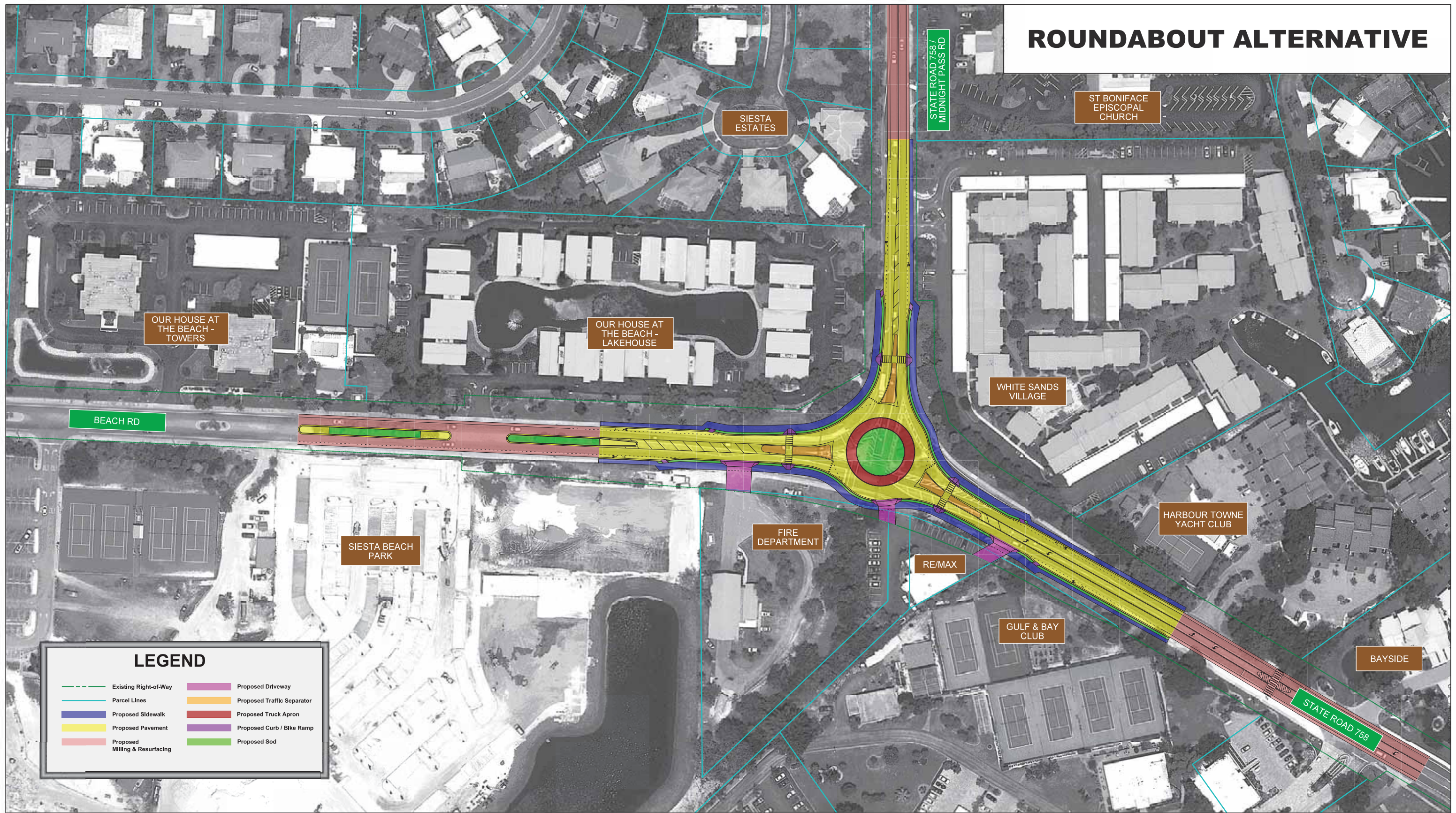


Street view, looking west  
along Beach Road



Street view, looking south  
along Midnight Pass Road

# ROUNDBABOUT ALTERNATIVE



## LEGEND

- Existing Right-of-Way
- Parcel Lines
- Proposed Sidewalk
- Proposed Pavement
- Proposed Milling & Resurfacing
- Proposed Driveway
- Proposed Traffic Separator
- Proposed Truck Apron
- Proposed Curb / Bike Ramp
- Proposed Sod



1" = 40'  
Aerial Flight Date: 2014

**SR 758 at Beach Road  
Intersection Improvements PD&E Study**

**FPID: 434491-1-52-01**

# ROUNDBOUT ALTERNATIVE



Aerial view of intersection improvement concepts



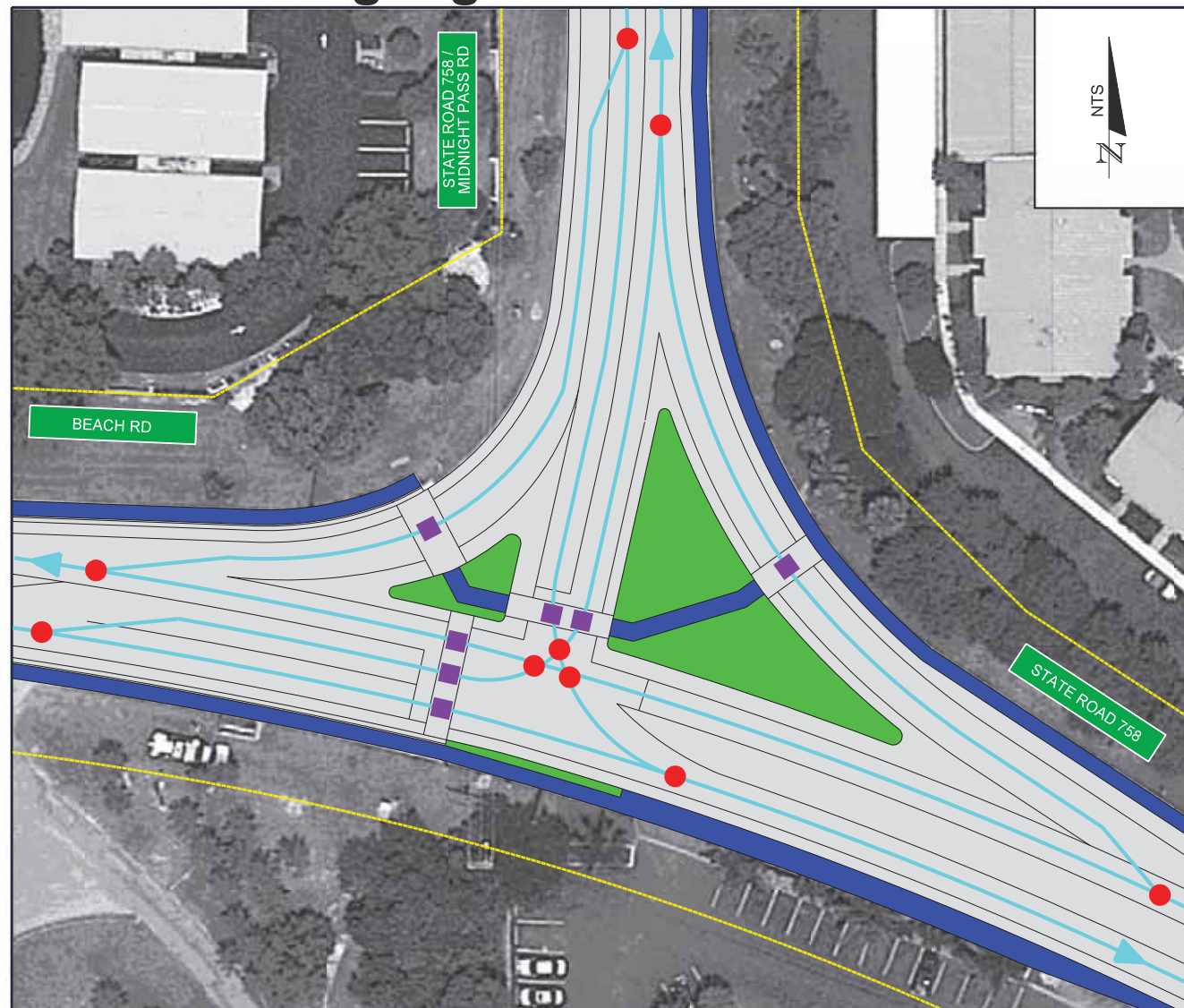
Street view, looking east along SR 758



Street view, looking south along Midnight Pass Road

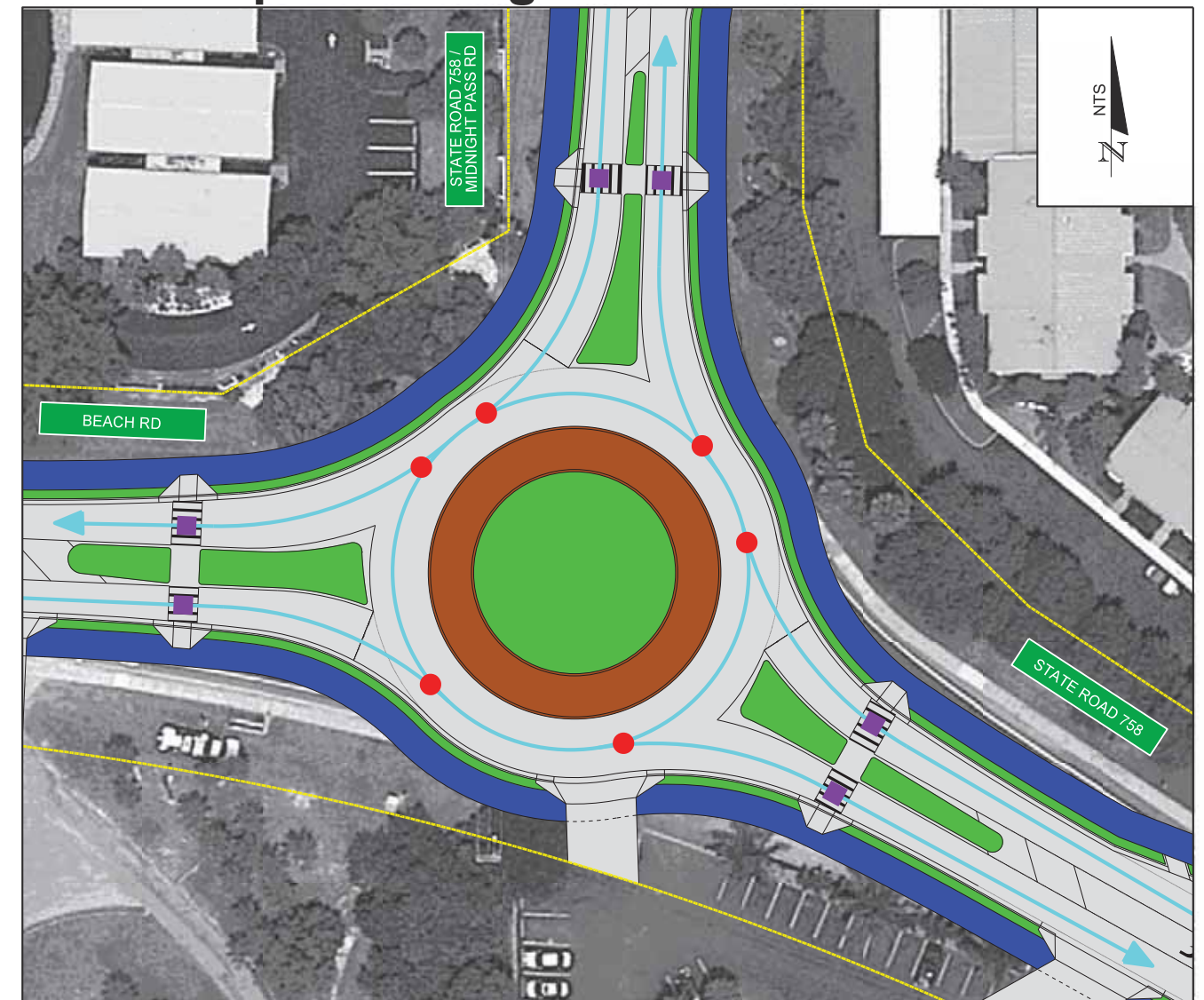
# SAFETY COUNTERMEASURE - CONFLICT POINT REDUCTION

## Existing Signalized T-Intersection



- (9) Vehicle to Vehicle Conflicts [ Includes (3) Crossing Conflicts ]
- (7) Vehicle to Pedestrian Conflicts

## Proposed Single-Lane Roundabout



- (6) Vehicle to Vehicle Conflicts [ Eliminates Crossing Conflicts ]
- (6) Vehicle to Pedestrian Conflicts



# ALTERNATIVES MATRIX

Alternative	No Build	Alternative #1 Intersection Improvement	Alternative #2 Roundabout
Pedestrian-Car Conflict Points	7	7	6
Car-Car Conflict Points	9	9	6
R/W Costs	\$0	\$0	\$0
Construction Costs	\$0	\$403,173	\$1,409,248
Landscape Costs	\$0	\$0	\$592,438
<b>Advantages</b>	<ul style="list-style-type: none"> <li>• No construction inconvenience</li> <li>• No construction Cost</li> </ul>	<ul style="list-style-type: none"> <li>• Removes free flow right turn lane</li> <li>• Pedestrians cross at signals</li> </ul>	<ul style="list-style-type: none"> <li>• Removes free flow right turn lane</li> <li>• Removes the signal</li> <li>• Conflict points are reduced</li> <li>• Vehicles travel at slower speeds</li> <li>• Traffic calming effect</li> <li>• Highly visible crossings</li> <li>• Pedestrians have right of way</li> <li>• Improved bicycle accommodations</li> <li>• Improved intersection operations</li> <li>• Can accommodate higher volumes of traffic</li> <li>• Improved safety</li> <li>• Improved aesthetics</li> <li>• No signal maintenance or electric costs</li> <li>• Maintains function during power failure</li> </ul>
<b>Disadvantages</b>	<ul style="list-style-type: none"> <li>• Pedestrians must cross free-flow right turn</li> <li>• No improvement to bicycle, pedestrian, or vehicle safety</li> <li>• No decrease in maintenance costs</li> <li>• Requires police traffic control during power outage</li> </ul>	<ul style="list-style-type: none"> <li>• Construction costs</li> <li>• Construction duration</li> <li>• Conflict points are not reduced</li> <li>• Right turns are signalized for less efficient operations</li> <li>• Requires police traffic control during power outage</li> </ul>	<ul style="list-style-type: none"> <li>• Construction costs</li> <li>• Construction duration</li> <li>• Landscape and irrigation costs</li> </ul>

# SCHEDULE & FUNDING

## Project Schedule

	2014			2015			2016			
	Summer	Fall	Winter	Spring	Summer	Fall	Winter	Spring	Summer	Fall
PD&E Study	██████████									
Public Information Workshop				★						
FHWA Approval				★						
Design					████████████████████					
Construction Begins										★

## Project Funding

### Florida Department of Transportation Adopted Five-Year Work Program

Phase	Schedule
PD&E	Complete Spring 2015
Design	Fiscal Year 2014/15
Right of Way Acquisition	Not required
Construction	Fiscal Year 2016/17



SR 758 at Beach Road  
Intersection Improvements PD&E Study  
FPID: 434491-1-52-01