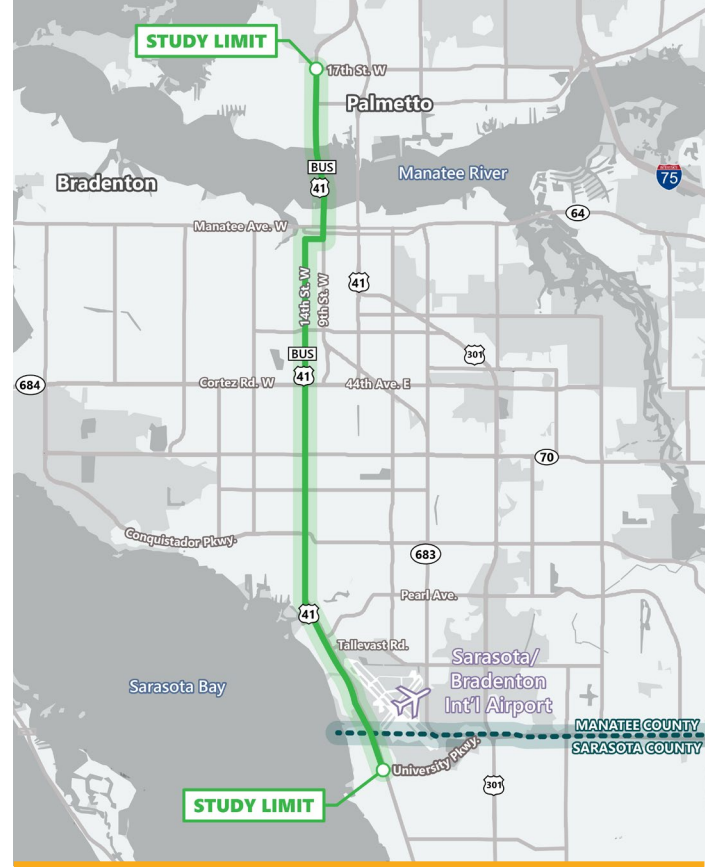


Sarasota/Manatee US 41 Corridor Mobility and Safety Study (CMass)

The Florida Department of Transportation (FDOT), District One is conducting the Sarasota/Manatee US 41 Corridor Mobility and Safety Study (CMass) along US 41 and US 41 Business from University Parkway in Sarasota County to 17th Street W in Manatee County. The study limits are approximately 11 miles long. Sarasota/Manatee US 41 CMass is being conducted in two phases.

Phase I of the study, now complete, included community and agency outreach, data collection, and evaluation of existing conditions. Study goals and objectives along with measures of effectiveness to assess achievement of the study goals were identified.

Phase II includes development of an existing conditions report, additional community and agency outreach, and analysis and recommendation of potential improvement concepts and strategies with an implementation plan. The Existing Conditions Report and results of the Connecting Communities Program Questionnaire are available on the study website (SWFLRoads.com/project/440154-1). The analysis of potential improvement concepts is anticipated to begin in early 2024 with a public meeting anticipated in late 2024.



GOALS AND OBJECTIVES



Enhance multimodal mobility and safety for all users



Advance transit service/operation strategies along the study corridor

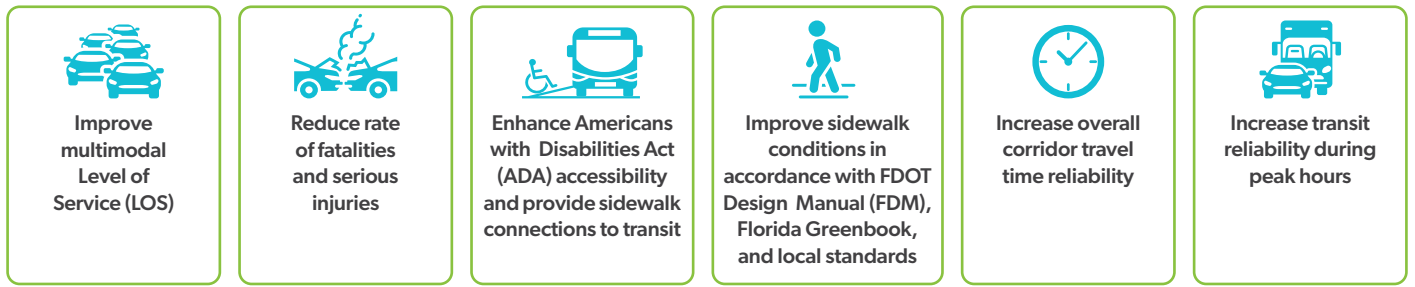


Improve transportation network access and interconnectivity within neighborhoods, adjacent areas and transit centers

Sarasota/Manatee US 41 CMass is part of the Connecting Communities Program, an initiative established to holistically enhance the multimodal transportation network within Sarasota and Manatee Counties.

For a map and full list of current area projects included as part of the Connecting Communities Program, visit www.swflroads.com/connectingcommunities.

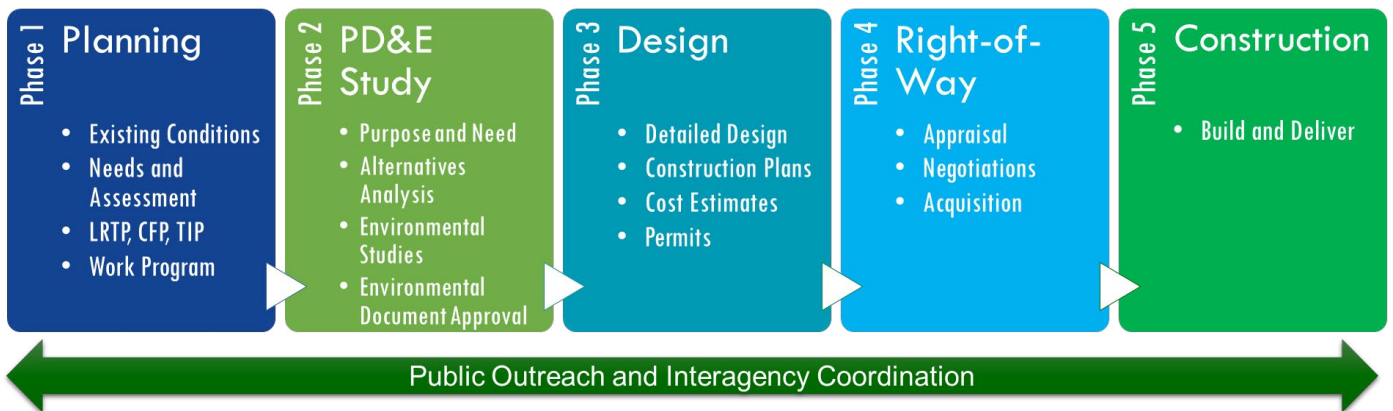
MEASURES OF EFFECTIVENESS




NEXT STEPS

There are typically five steps that occur between the time that a transportation need is identified to implementation or project delivery. The five steps include Planning, Project Development and Environment (PD&E), Design, Right-of-Way, and Construction.

Sarasota/Manatee US 41 CMASS is currently in the Planning phase. At the end of this phase, the study team will recommend potential improvement concepts and strategies that may advance to the Project Development and Environment phase for more in-depth evaluation and additional public input. Some improvement concepts and strategies may advance directly to the Design phase.





A StoryMap was created for Sarasota/Manatee US 41 CMASS. It provides an introduction and background information on the study, results of the existing conditions analysis (including typical sections, demographic data/maps of study area, safety data, etc.), next steps of the study, and contact information.

SCAN TO LEARN MORE!

STUDY WEBSITE



STORYMAP



[SWFLRoads.com/project/440154-1](https://www.sfwlroads.com/project/440154-1)

[US 41 Corridor Mobility and Safety Study \(CMASS\) \(arcgis.com\)](https://arcgis.com)

CONTACT

Matt Dockins, PE
 FDOT Project Manager
 FDOT District 1
 Matthew.Dockins@dot.state.fl.us.

Heather Garcia
 Consultant Project Manager
 VHB
 HGarcia@vhb.com

Public participation is solicited without regard to race, color, national origin, age, sex, religion, disability, or family status. Persons wishing to express their concerns relative to FDOT compliance with Title VI may do so by contacting Cynthia Sykes, FDOT District One Title VI Coordinator, by phone at (863) 519-2287 or by email at Cynthia.Sykes@dot.state.fl.us.

This planning product may be adopted into the environmental review process, pursuant to Title 23 USC § 168, or the state project development process.