

# I-4 (SR 400) at US 27 (SR 25) and Backage Road PD&E Study Kickoff Newsletter

Financial Project ID Nos.: 201210-5 and 201210-7



September 2023

The Florida Department of Transportation (FDOT), District One, is kicking off Project Development and Environment (PD&E) studies for improvements to the I-4 (SR 400) interchange at US 27 (SR 25) in Davenport, Polk County. The objective of the PD&E studies is to provide documented information necessary for FDOT to reach a decision on the type, design, and location of improvements.

These studies will evaluate two projects.

## **FPID# 201210-5: US 27 (SR 25) Interchange at I-4 (SR 400) from South of Ernie Caldwell Boulevard to Ritchie Road and I-4 (SR 400) Auxiliary Lanes from US 27 (SR 25) to CR 532.**

Segment 1 is from south of Ernie Caldwell Boulevard to Ritchie Road (MP 23.10 to MP 24.49), a project length of approximately 1.4 miles. In the existing condition, US 27 (SR 25) is an urban arterial with three 12-foot travel lanes in each direction. This project will address operational deficiencies of the existing US 27 (SR 25) interchange by modifying and improving the I-4 (SR 400) ramp terminal intersections at US 27 (SR 25), providing a grade-separated intersection at US 27 (SR 25) and Home Run Boulevard/Posner Boulevard, increasing the number of travel lanes along US 27 (SR 25) within the project limits, and creating a frontage road along southbound US 27 (SR 25) from Home Run Blvd. to south of I-4 (SR 400).

A proposed shared-use path will be added to the median of US 27.

Segment 2 is I-4 (SR 400) Auxiliary Lanes from US 27 (SR 25) to CR 532 (MP 29.25 to MP 32.0), a project length of approximately 2.8 miles. I-4 (SR 400) currently has three 12-foot travel lanes in each direction with these limits. The proposed improvements will add a 12-foot auxiliary lane in each direction on the outside of the existing travel lanes.

## **FPID # 201210-7: Backage Road from Home Run Boulevard to Frontage Road.**

The project proposes to add a new urban road "Backage Road" west of US 27 (SR 25) and south of I-4 (SR 400) from Home Run Boulevard to Frontage Road, a distance of approximately 2,200 feet. The proposed two-lane road will include a bike lane and a sidewalk in each direction.

Additionally, the project would extend Heller Court to the new road and add two additional roundabouts.

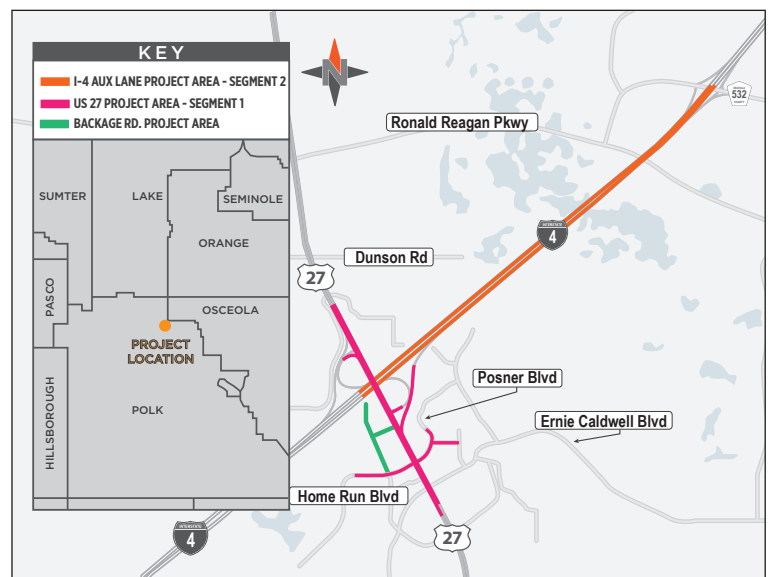
Ultimately, there are three major intersections in these projects that will be reconstructed.

- US 27 (SR 25) at I-4 (SR 400), North Ramp (at Frontage Road), including RCUT
- US 27 (SR 25) at I-4 (SR 400), South Ramp, including RCUT
- US 27 (SR 25) at Posner Boulevard /Homerun Boulevard

## What is a PD&E Study?

A PD&E study is an environmental and engineering process development by FDOT to determine social, economic, natural, and physical environmental effects associated with a proposed transportation improvement project.

The process follows procedures set forth in the National Environmental Policy Act of 1969 and federal and state laws and regulations. It requires the combined efforts of professional engineers, planners, and scientists who collect and analyze project-related information to develop the best solution for transportation needs. An important component of the process is public and agency coordination.



## CONTACT INFORMATION

Joshua Jester, P.E., Project Manager  
📍 801 North Broadway, Bartow, FL 33830  
✉️ Joshua.Jester@dot.state.fl.us  
📞 863-519-2251

Heather Grubert, P.E., Project Manager  
📍 801 North Broadway, Bartow, FL 33830  
✉️ Heather.Grubert@dot.state.fl.us  
📞 407-638-2008

Study website: <https://www.swflroads.com/i4atus27>





Florida Department of Transportation  
Attn: FDOT Heather Grubert, P.E.  
801 North Broadway  
Bartow, FL 33830

## WE WANT TO HEAR FROM YOU

After reviewing the materials, you can submit comments on the project in three ways:

1. The comment link on the project website, <https://www.swflroads.com/i4atus27>
2. Emailing the FDOT Project Manager Heather Grubert at [Heather.Grubert@dot.state.fl.us](mailto:Heather.Grubert@dot.state.fl.us), or
3. Mailing your comment to Heather Grubert, P.E., Project Manager, 801 North Broadway, Bartow, FL 33830

*FDOT solicits public participation without regard to race, color, national origin, age, sex, religion, disability, or family status. People who require special accommodations under the Americans with Disabilities Act who require translation services (free of charge) should contact Cynthia Sykes, District One Title VI Coordinator, at (863) 519-2287, or email at [cynthia.sykes@dot.state.fl.us](mailto:cynthia.sykes@dot.state.fl.us).*

*The environmental review, consultation, and other actions required by applicable federal environmental laws for this project are being, or have been, carried out by the Florida Department of Transportation (FDOT) pursuant to 23 U.S.C. § 327 and a Memorandum of Understanding dated May 26, 2022, and executed by the Federal Highway Administration and FDOT.*

### PROJECT SCHEDULE

PD&E Study Begins **Fall 2022**

Design Begins **SPRING 2023**

Public Hearing **SPRING/SUMMER 2024**

PD&E Study and Design Completed **FALL 2024**

Right-of-Way Acquisition Begins **WINTER 2024**

Right-of-Way Acquisition Completed and Construction Begins **SPRING 2027**

*Schedule is subject to change*