

Sanibel Causeway RESTORATION

CITY OF SANIBEL

JANUARY 16, 2024



THE BEGINNING

► October 2022











PROGRESS



► Temporary Roadway



► Bridge Approach
Slab Construction



Several New Resiliency Features

7

- ▶ Several layers of protective sheet pile walls – each with a protective concrete cap
 - ▶ Island walls protect the causeway islands roadway – **completed**
 - ▶ Sea walls protect the bridge approaches – **ongoing**
 - ▶ Retaining walls protect the sides of the bridges – **ongoing**
 - ▶ King pile protect the area near the approach slabs – **completed**
- ▶ Marine mattresses absorb wave energy
- ▶ Armor stone protects bridge abutments
- ▶ Road surface 2' higher
- ▶ Drainage system adjacent to road



► Island Walls –
On Island Sheet Pile Installation

- ▶ Cranes Placing King Pile – Provide wall structure





Installation of Marine Mattresses

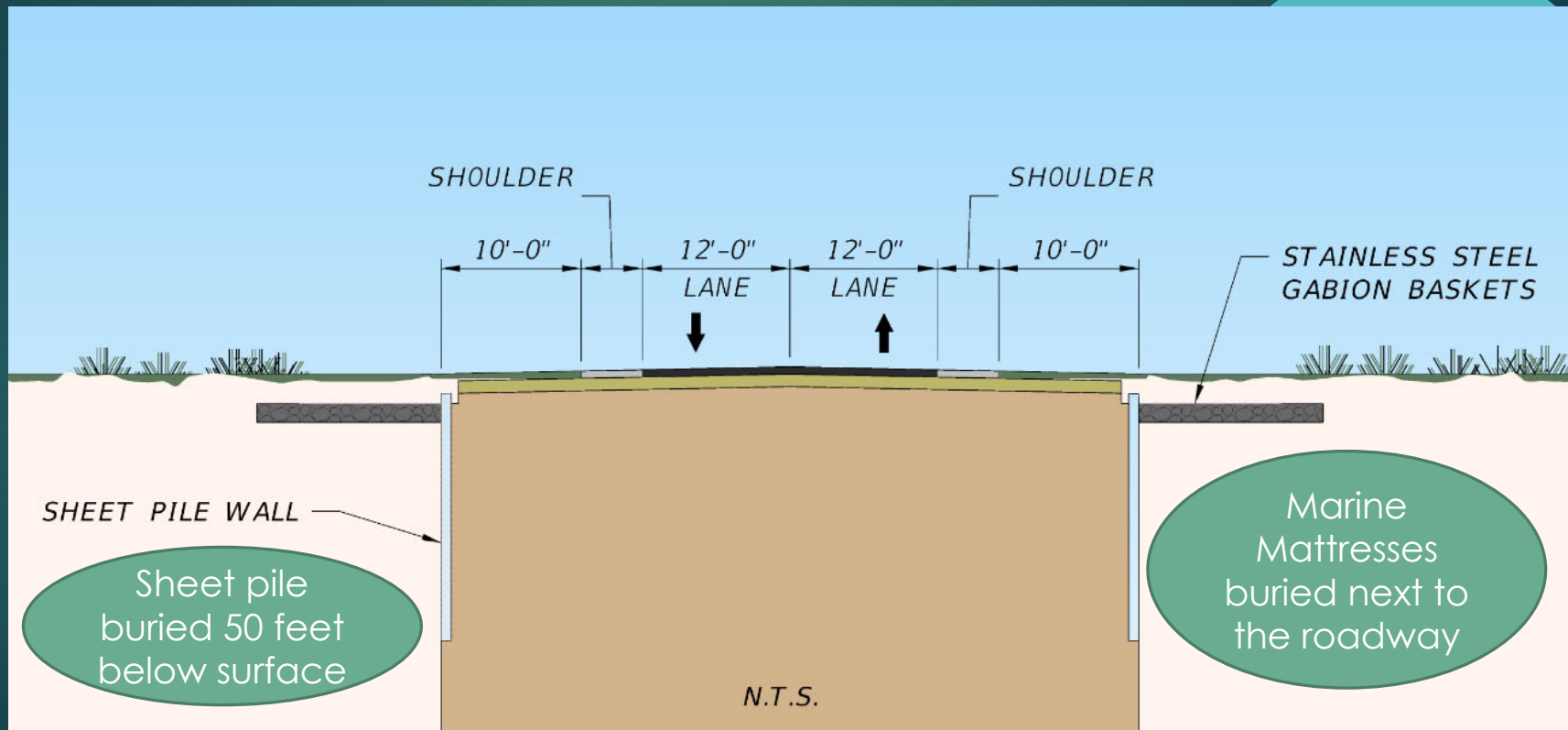
10

- ▶ Fully buried
- ▶ Fastened to retaining walls
- ▶ Absorb wave energy

Permanent Repairs – Roadway

11

- ▶ Typical location of sheet pile and marine mattresses



Substantial Roadway Completion – Dec. 22, 2023

- ▶ Two, 12-foot lanes through majority of Causeway
- ▶ Shoulders
- ▶ Smoother driving surface
- ▶ Fewer traffic shifts
- ▶ Minimal impacts to traffic



12





WHAT'S LEFT TO DO?



Armor Stone

- ▶ Protects the bridge abutments
- ▶ Will continue into 2025

Earthwork/ Grading

- ▶ Shape embankments
- ▶ Fine grade to set causeway islands back to pre-storm configuration
- ▶ Prepare for placement of marine mattresses



Placement of Sod



WHAT TO EXPECT



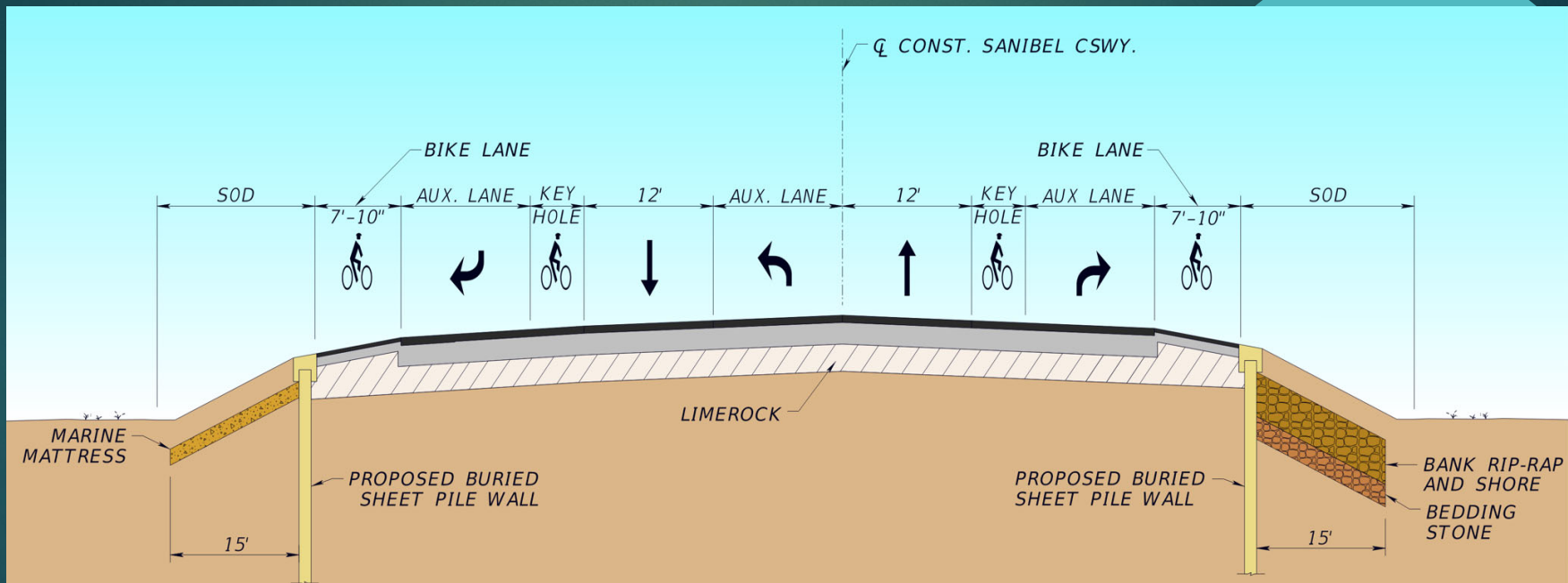


In the Work Zone

- ▶ Construction vehicles throughout life of project
- ▶ No extended stops are permitted
- ▶ No anticipated flagging during peak hours
- ▶ Crews will be utilizing area behind barrels as much as possible

Permanent Repairs – Island Roadway Design

19



Preliminary - Subject to change



On McGregor Boulevard

- ▶ Installation of marine mattresses for erosion control
- ▶ One lane continues from toll plaza until Port Comfort Road
- ▶ No access to shoulder

Restoration of Punta Rassa Boat Ramp

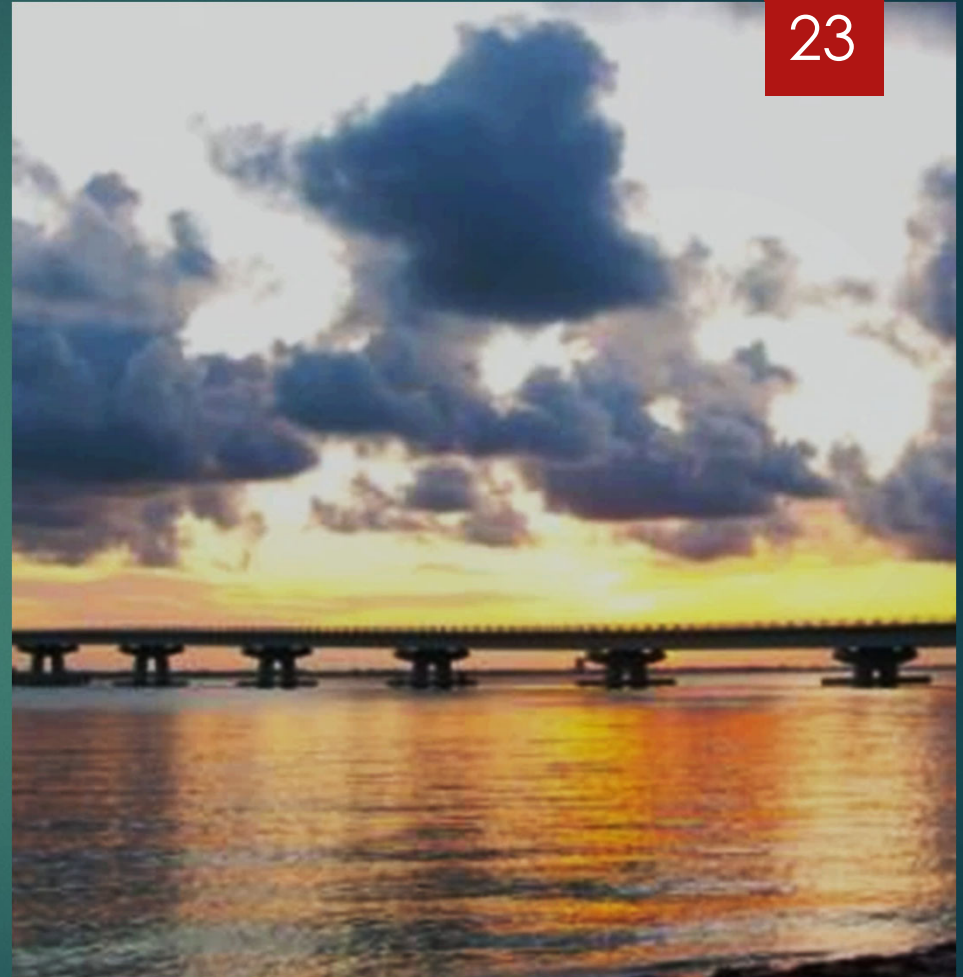




Restoration of Causeway Islands Park (Lee County)

Timeline

- ▶ Armoring (bridge protection) estimated completion – early 2025
- ▶ Causeway islands recreation areas restoration – estimated completion – mid 2027



QUESTIONS?

24

Jennifer Dorning
Sanibel Causeway
Community Liaison

Jennifer.Dorning@dot.state.fl.us

239-338-7723



FDOT

Hurricane Ian Sanibel Island Access

from Sextant Drive to Port Comfort Road

www.swflroads.com/SanibelCauseway

PUBLIC ACCESS TO THE CAUSEWAY ISLANDS IS PROHIBITED DURING CONSTRUCTION

www.swflroads.com/SanibelCauseway