

MATCHLINE A

BEGIN STUDY LIMITS

E. TOWN AND RIVER DRIVE

CYPRESS LAKE DRIVE

Residential

Cypress Square (Retail Center)

Mark Loren Designs

Sunman's Nursery and Landscape

Mobius Institute

CYPRESS LAKE DRIVE

590'

500'

290'

LEGEND

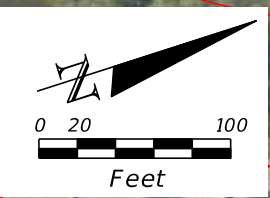
	REMOVE EXISTING CONCRETE
	MILLING LIMIT
	TRAFFIC SEPARATOR
	TURF SOD

**SECTION 12040 -- MP 2.671 to MP 3.695
SR 867 FROM CYPRESS LAKE DRIVE
TO EDINBURGH DRIVE
LEE COUNTY - FLORIDA**

REVISIONS		REVISIONS		STATE OF FLORIDA DEPARTMENT OF TRANSPORTATION			IMPROVEMENT DIAGRAM SR 867 ACCESS MANAGEMENT STUDY CYPRESS LAKE DRIVE TO EDINBURGH DRIVE (MP 2.671 TO MP 3.695)	SHEET NO. 16
DATE	DESCRIPTION	DATE	DESCRIPTION	ROAD NO.	COUNTY	FINANCIAL PROJECT ID		
				867	LEE			

Traffic Engineering Data Solutions, Inc.
80 Spring Vista Drive Phone: 386.753.0558
DeBary, FL 32713 Fax: 386.753.0778

SUSERS SDATES STIMES SFILES



LEGEND

	REMOVE EXISTING CONCRETE
	MILLING LIMIT
	TRAFFIC SEPARATOR
	TURF SOD

**SECTION 12040 -- MP 2.671 to MP 3.695
SR 867 FROM CYPRESS LAKE DRIVE
TO EDINBURGH DRIVE
LEE COUNTY - FLORIDA**

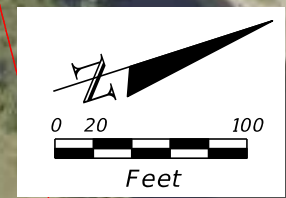
REVISIONS	
DATE	DESCRIPTION

Traffic Engineering Data Solutions, Inc.
80 Spring Vista Drive Phone: 386.753.0558
DeBary, FL 32713 Fax: 386.753.0778

STATE OF FLORIDA DEPARTMENT OF TRANSPORTATION		
ROAD NO.	COUNTY	FINANCIAL PROJECT ID
867	LEE	

IMPROVEMENT DIAGRAM
SR 867 ACCESS MANAGEMENT STUDY
CYPRESS LAKE DRIVE TO EDINBURGH DRIVE
(MP 2.671 TO MP 3.695)

SHEET NO.
17



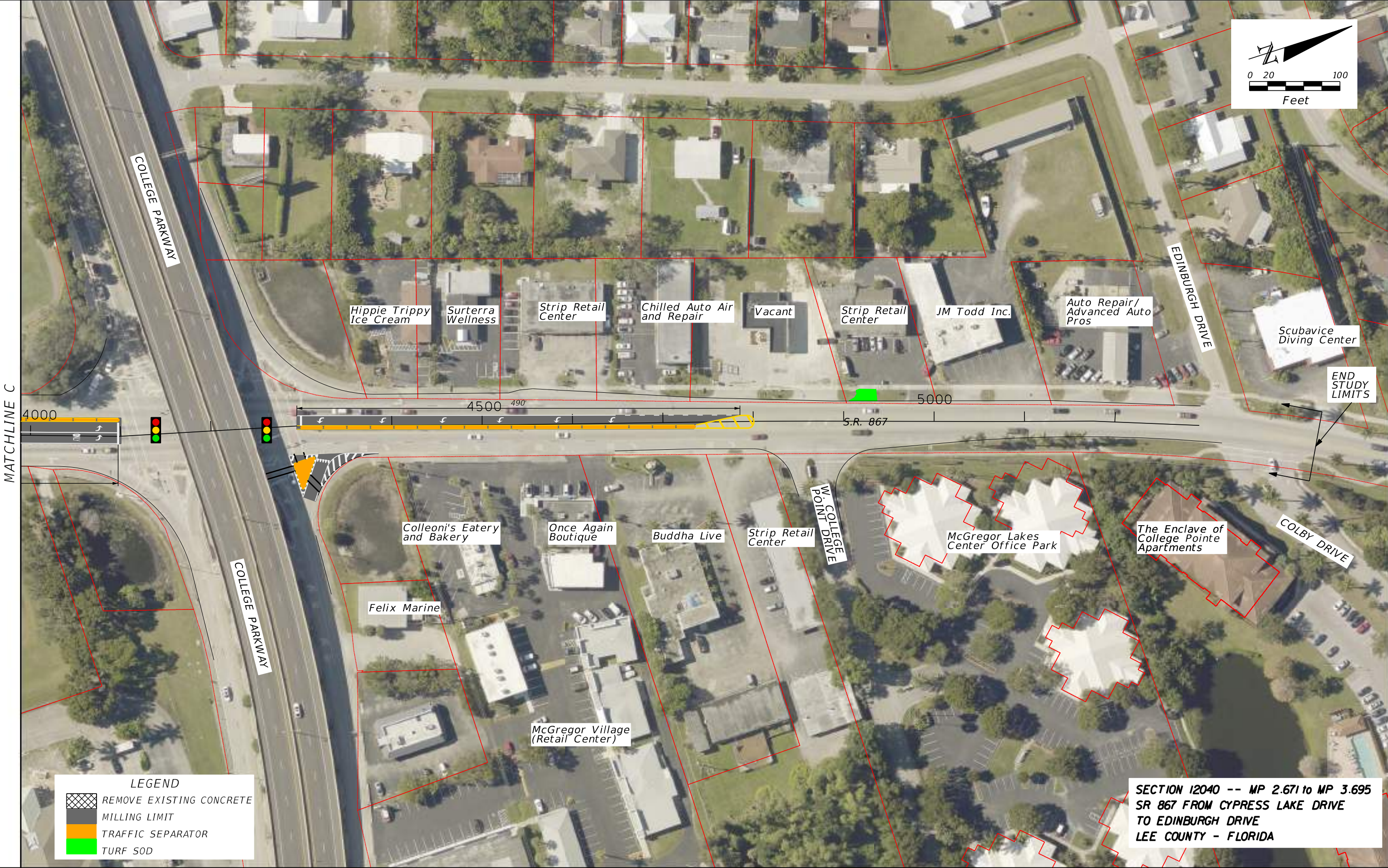
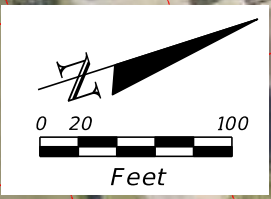
LEGEND

	REMOVE EXISTING CONCRETE
	MILLING LIMIT
	TRAFFIC SEPARATOR
	TURF SOD

**SECTION 12040 -- MP 2.671 to MP 3.695
SR 867 FROM CYPRESS LAKE DRIVE
TO EDINBURGH DRIVE
LEE COUNTY - FLORIDA**

REVISIONS				Traffic Engineering Data Solutions, Inc. <small>80 Spring Vista Drive Phone: 386.753.0558 DeBary, FL 32713 Fax: 386.753.0778</small>	STATE OF FLORIDA DEPARTMENT OF TRANSPORTATION			IMPROVEMENT DIAGRAM SR 867 ACCESS MANAGEMENT STUDY CYPRESS LAKE DRIVE TO EDINBURGH DRIVE (MP 2.671 TO MP 3.695)	SHEET NO. 18
DATE	DESCRIPTION	DATE	DESCRIPTION		ROAD NO.	COUNTY	FINANCIAL PROJECT ID		
						867	LEE		

SUSERS SDATES STIMES SFILES



LEGEND

	REMOVE EXISTING CONCRETE
	MILLING LIMIT
	TRAFFIC SEPARATOR
	TURF SOD

**SECTION 12040 -- MP 2.671 to MP 3.695
SR 867 FROM CYPRESS LAKE DRIVE
TO EDINBURGH DRIVE
LEE COUNTY - FLORIDA**

REVISIONS	
DATE	DESCRIPTION

Traffic Engineering Data Solutions, Inc.
80 Spring Vista Drive Phone: 386.753.0558
DeBary, FL 32713 Fax: 386.753.0778

STATE OF FLORIDA DEPARTMENT OF TRANSPORTATION		
ROAD NO.	COUNTY	FINANCIAL PROJECT ID
867	LEE	

IMPROVEMENT DIAGRAM
SR 867 ACCESS MANAGEMENT STUDY
CYPRESS LAKE DRIVE TO EDINBURGH DRIVE
(MP 2.671 TO MP 3.695)

SHEET NO.
19