

MATCHLINE A

MATCHLINE A

MATCHLINE B

**SECTION 12040 -- MP 2.671 to MP 3.695  
S.R. 867 FROM CYPRESS LAKE  
TO COLBY DRIVE  
LEE COUNTY - FLORIDA**

SYMBOLS:			
	SHORT FORM		REAR END COLLISION
	LONG FORM		FIXED OBJECT COLLISION
	PERSONAL INJURY		HEAD-ON COLLISION
	FATALITY		ALL OTHER COLLISION
			BACKED INTO COLLISION
			OFFROAD COLLISION
			OVERTURNED VEHICLE
			SIDE SWIPE COLLISION
			BICYCLE COLLISION
			PEDESTRIAN COLLISION
			RIGHT TURN COLLISION
			LEFT TURN COLLISION

*Traffic Engineering Data Solutions, Inc.*  
80 Spring Vista Drive Phone: 386.753.0558  
DeBary, FL 32713 Fax: 386.753.0778

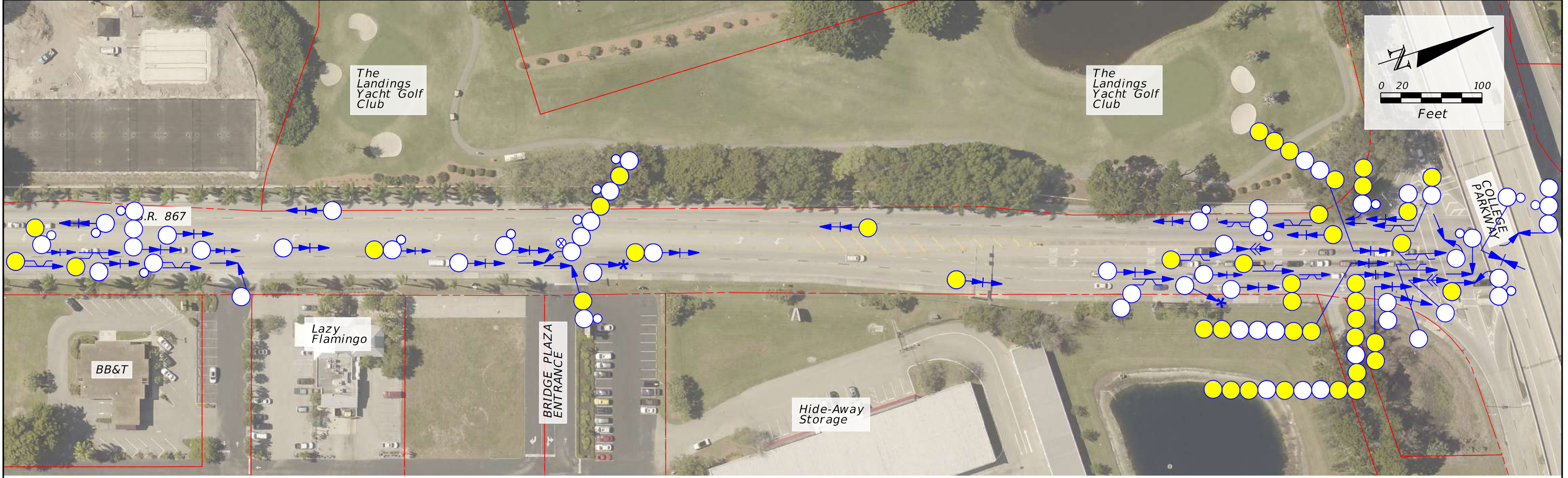
STATE OF FLORIDA  
DEPARTMENT OF TRANSPORTATION

COLLISION DIAGRAM  
(1/01/2014 TO 12/31/2018)  
PAGE 1 OF 2

PAGE NO.

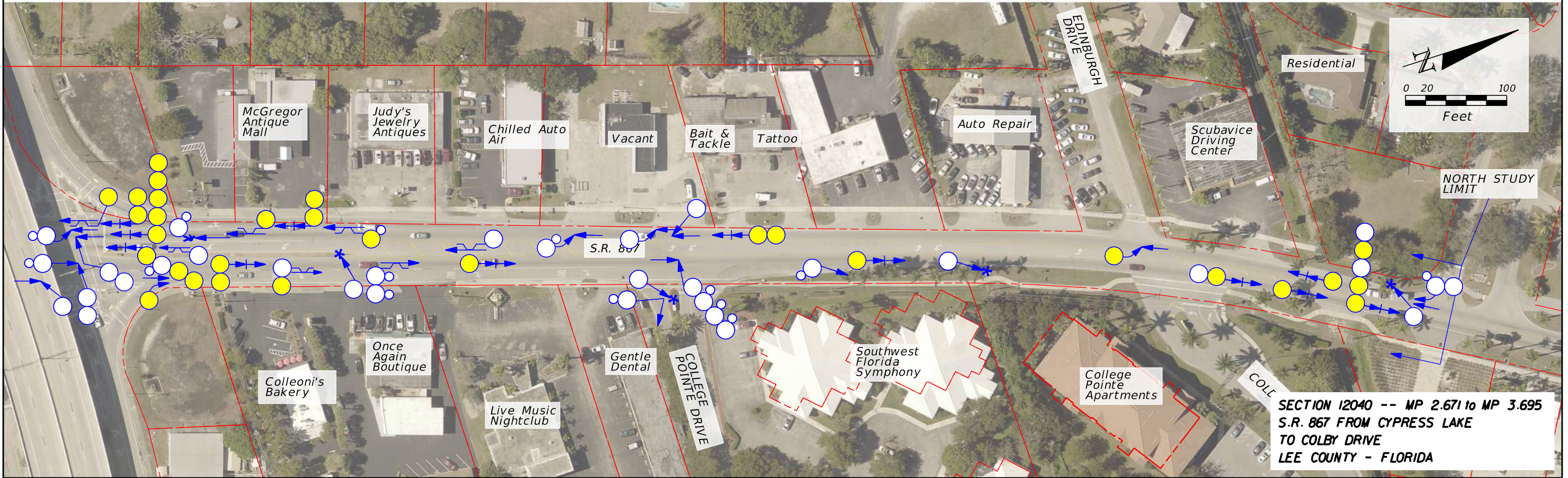


MATCHLINE B



MATCHLINE C

MATCHLINE C



**SECTION 12040 -- MP 2.671 to MP 3.695  
S.R. 867 FROM CYPRESS LAKE  
TO COLBY DRIVE  
LEE COUNTY - FLORIDA**

SYMBOLS:	
	SHORT FORM
	LONG FORM
	PERSONAL INJURY
	FATALITY
	REAR END COLLISION
	FIXED OBJECT COLLISION
	HEAD-ON COLLISION
	ALL OTHER COLLISION
	BACKED INTO COLLISION
	OFFROAD COLLISION
	OVERTURNED VEHICLE
	SIDE SWIPE COLLISION
	BICYCLE COLLISION
	PEDESTRIAN COLLISION
	RIGHT TURN COLLISION
	LEFT TURN COLLISION

*Traffic Engineering Data Solutions, Inc.*  
80 Spring Vista Drive Phone: 386.753.0558  
DeBary, FL 32713 Fax: 386.753.0778

STATE OF FLORIDA  
DEPARTMENT OF TRANSPORTATION

COLLISION DIAGRAM  
(1/01/2014 TO 12/31/2018)  
PAGE 2 OF 2

PAGE NO.