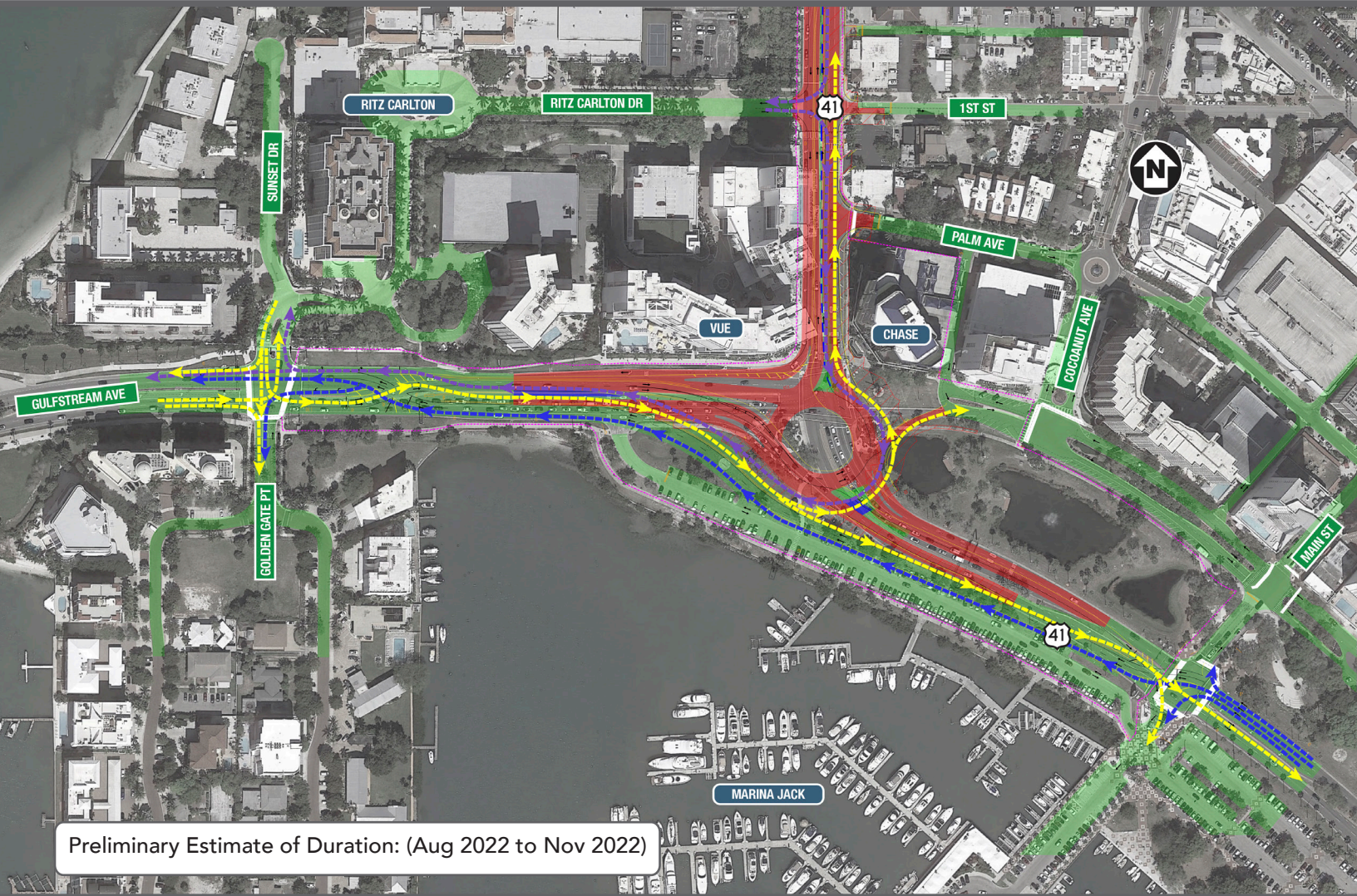


Phase IIA Temporary Traffic Movements



Preliminary Estimate of Duration: (Aug 2022 to Nov 2022)

LEGEND KEY

- Traffic Movement Eastbound Along Gulfstream Ave/US 41 and Northbound Along US 41:
- Traffic Movement Westbound Along Gulfstream Ave/US 41:
- Traffic Movement Southbound Along US 41 and Westbound Along Gulfstream Ave:

Questions? Contact Us At:

Alice Ramos, Community Outreach Specialist, at 941-217-7772 or by email at alice.ramos@dot.state.fl.us or Adam Rose, FDOT Public Information, at 863-519-2774 or by email at Adam.Rose@dot.state.fl.us

Please visit our website for more information at www.swflroads.com/gulfstreamroundabout