



# FLORIDA DEPARTMENT OF TRANSPORTATION US 41 AND KMI BRIDGE OVER HATCHETT CREEK VENICE | SARASOTA COUNTY

Financial Project ID: 434859-1-52-01

October 2021

## CONSTRUCTION PROJECT

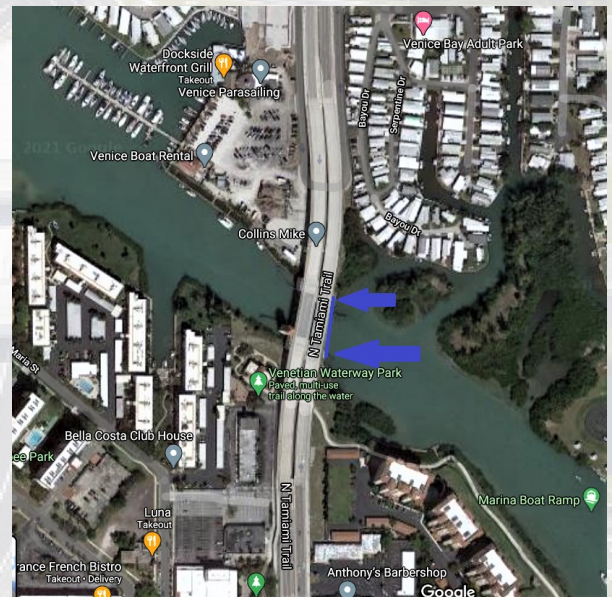
The Florida Department of Transportation (FDOT) will begin a bridge improvement project on US 41 at the KMI Bridge over Hatchett Creek in Venice, Sarasota County, this October 2021. Work will include structural, mechanical and electrical updates to maintain the long-term bridge performance. To minimize motorist inconvenience, FDOT has limited lane closures to overnight hours from 8 p.m. to 6 a.m., and reopening all lanes during the day. During the required 60-day final testing, the bridge will be opened four times each day.

## PROJECT IMPROVEMENTS

- Structural, mechanical and electrical updates.

## PROJECT SCHEDULE

- Construction will start in October 2021. Expected completion is late spring 2022, weather permitting
- Lane closures are scheduled for overnight hours, Sunday through Saturday, 8 p.m. - 6 a.m.
- Pedestrian & bicycle detours will be in place.
- Expect noise from back-up alarms, trucks, and construction equipment.
- **Estimated construction costs:** \$2,190,000



## PROJECT CONTRACTOR

Quinn Construction

## CONTACT US

For more information, contact:

Barbara Catlin, Community Outreach Manager  
Cell/Text (941) 302-5048  
barbara.catlin@dot.state.fl.us

Andy Orrell, Director Public Involvement  
(863)519-2828  
[andy.orrell@dot.state.fl.us](mailto:andy.orrell@dot.state.fl.us)

## JOIN US ON THE WEB

## STAY INFORMED

by visiting

[www.swflroads.com](http://www.swflroads.com)