

STATE OF FLORIDA
DEPARTMENT OF TRANSPORTATION

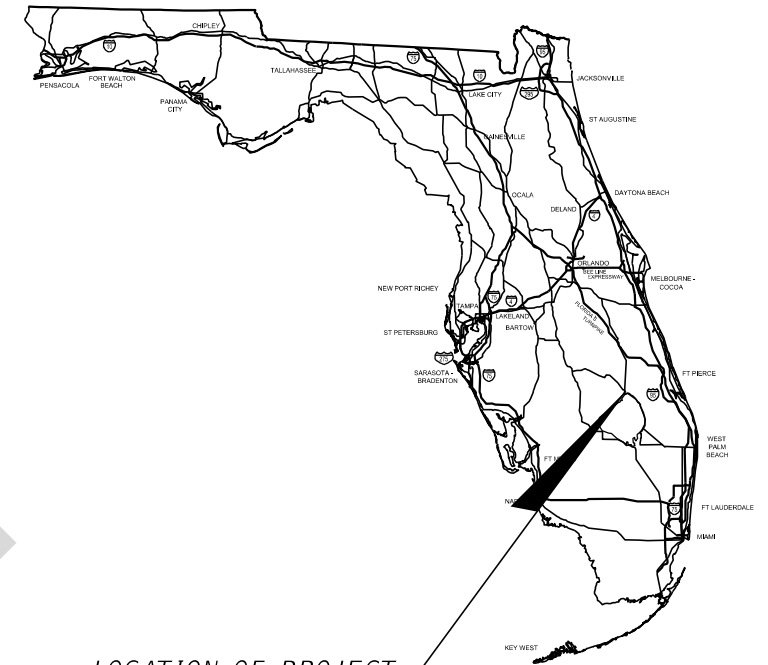
CONTRACT PLANS

FINANCIAL PROJECT ID: 419344-3-52-01

OKEECHOBEE COUNTY (91060)

STATE ROAD NO. 710

SIGNALIZATION PLANS



INDEX OF SIGNALIZATION PLANS

<i>SHEET NO.</i>	<i>SHEET DESCRIPTION</i>
T-1	KEY SHEET
T-2	SIGNATURE SHEET
T-3	TABULATION OF QUANTITIES
T-4 to T-5	GENERAL NOTES
T-6 to T-8	SIGNALIZATION PLAN
T-9	STRAIN POLE TABULATION
T-10	STRAIN POLE SCHEDULE

DRAFT

**SIGNALIZATION PLANS
ENGINEER OF RECORD:**

ROBERT W. BEST, P.E.
P.E. LICENSE NUMBER 69875
OM ENGINEERING SERVICES, INC.
621 E. WASHINGTON STREET, SUITE 8
ORLANDO, FL 32801
CERTIFICATE OF AUTHORIZATION 26637
VENDOR NO.
CONTRACT NO. 9643

FDOT PROJECT MANAGER:

JIMMY P. VILCE, EI

<i>CONSTRUCTION CONTRACT NO.</i>	<i>FISCAL YEAR</i>	<i>SHEET NO.</i>
-	17	T-1

THIS ITEM HAS BEEN DIGITALLY
SIGNED AND SEALED BY:

PRINTED COPIES OF THIS DOCUMENT ARE
NOT CONSIDERED SIGNED AND SEALED.
THE SIGNATURE MUST BE VERIFIED
IN THE ELECTRONIC DOCUMENTS.

OM ENGINEERING SERVICES, INC.
621 E. WASHINGTON STREET, SUITE 8
ORLANDO, FLORIDA 32801
CERTIFICATE OF AUTHORIZATION: 26637
ROBERT W. BEST, P.E. NO. 69875

THE ABOVE NAMED PROFESSIONAL ENGINEER SHALL BE RESPONSIBLE FOR THE
FOLLOWING SHEETS IN ACCORDANCE WITH RULE 61G15-23.004, F.A.C.

<u>SHEET NO.</u>	<u>SHEET DESCRIPTION</u>
T-1	KEY SHEET
T-2	SIGNATURE SHEET
T-3	TABULATION OF QUANTITIES
T-4 to T-5	GENERAL NOTES
T-6 to T-8	SIGNALIZATION PLAN
T-9	STRAIN POLE TABULATION

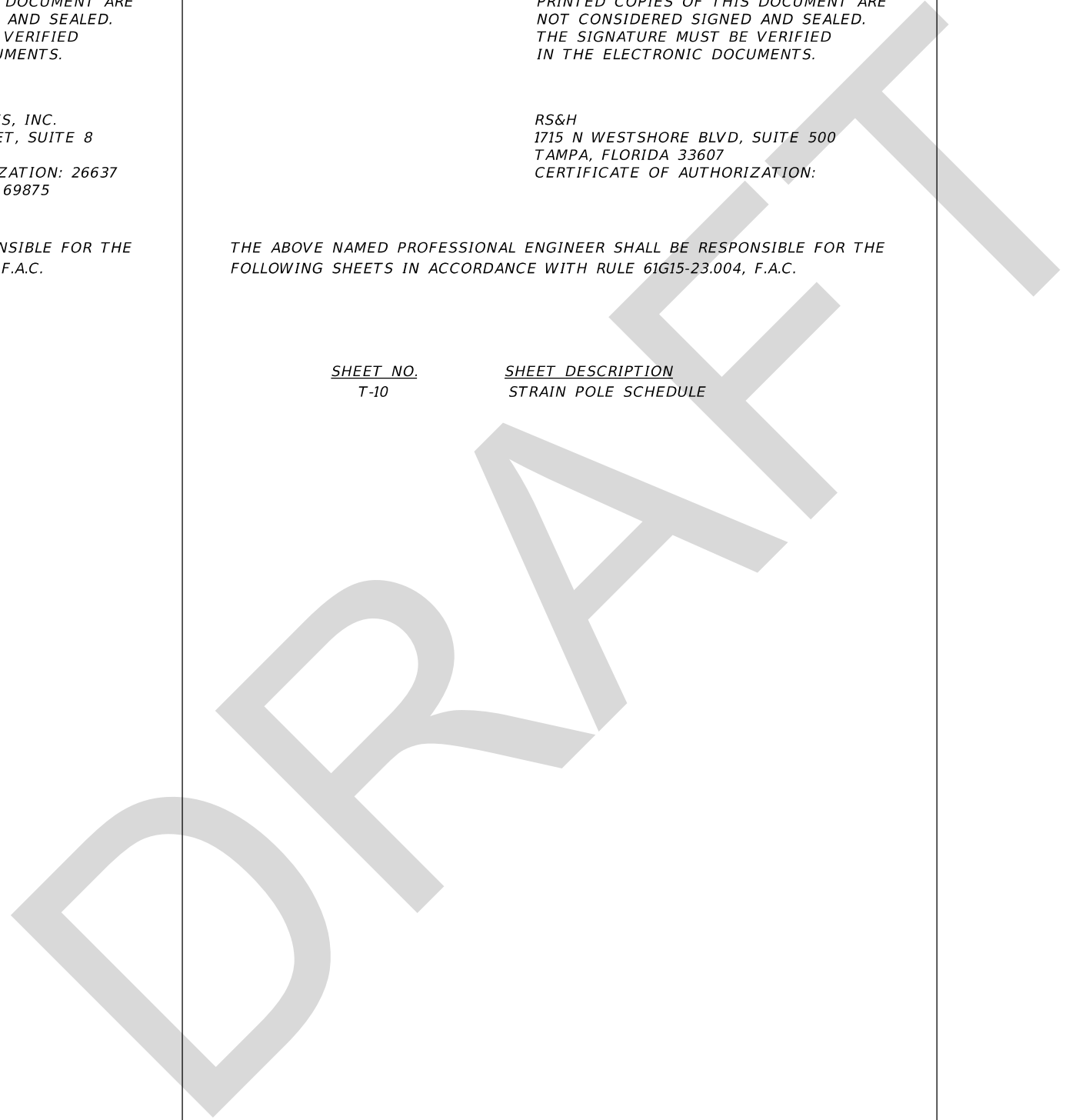
THIS ITEM HAS BEEN DIGITALLY
SIGNED AND SEALED BY:

PRINTED COPIES OF THIS DOCUMENT ARE
NOT CONSIDERED SIGNED AND SEALED.
THE SIGNATURE MUST BE VERIFIED
IN THE ELECTRONIC DOCUMENTS.

RS&H
1715 N WESTSHORE BLVD, SUITE 500
TAMPA, FLORIDA 33607
CERTIFICATE OF AUTHORIZATION:

THE ABOVE NAMED PROFESSIONAL ENGINEER SHALL BE RESPONSIBLE FOR THE
FOLLOWING SHEETS IN ACCORDANCE WITH RULE 61G15-23.004, F.A.C.

<u>SHEET NO.</u>	<u>SHEET DESCRIPTION</u>
T-10	STRAIN POLE SCHEDULE



REVISIONS				OM Engineering Services, Inc. 621 E. Washington Street, Suite 8 Orlando, Florida 32801 Phone: 407-704-7815 Fax: 407-704-7816 Certificate of Authorization No: 26637 Robert W. Best, Jr., PE / No: 69875	STATE OF FLORIDA DEPARTMENT OF TRANSPORTATION			SIGNATURE SHEET	SHEET NO. T-2
DATE	DESCRIPTION	DATE	DESCRIPTION		ROAD NO.	COUNTY	FINANCIAL PROJECT ID		
					710	OKEECHOBEE	419344-3-52-01		

TABULATION OF QUANTITIES

PAY ITEM NO.	DESCRIPTION	UNIT	SHEET NUMBERS								TOTAL THIS SHEET		GRAND TOTAL	
			T-5		T-6		T-7		PLAN	FINAL	PLAN	FINAL	PLAN	FINAL
			PLAN	FINAL	PLAN	FINAL	PLAN	FINAL						
630-2-11	CONDUIT, FURNISH & INSTALL, OPEN TRENCH	LF												
630-2-12	CONDUIT, F&I, DIRECTIONAL BORE	LF												
630-2-14	CONDUIT, F&I, ABOVE GROUND	LF												
632-7-1	SIGNAL CABLE- NEW OR RECONSTRUCTED INTERSECTION, F&I	PI												
634-4-143	SPAN WIRE ASSEMBLY, F&I, SINGLE POINT, BOX	PI												
635-2-11	PULL & SPLICE BOX, F&I, 13" x 24" COVER SIZE	EA												
639-1-122	ELECTRICAL POWER SERVICE, F&I, UNDERGROUND, METER PURCHASED BY CONTRACTOR	AS												
639-2-1	ELECTRICAL SERVICE WIRE, F&I	LF												
639-3-11	ELECTRICAL SERVICE DISCONNECT, F&I, POLE MOUNT	EA												
641-2-12	PRESTRESSED CONCRETE POLE, F&I, TYPE P-11 SERVICE POLE	EA												
641-2-1X	PRESTRESSED CONCRETE POLE, F&I, TYPE P-XXXX	EA												
641-2-80	PRESTRESSED CONCRETE POLE, COMPLETE POLE REMOVAL	EA												
646-1-11	ALUMINUM SIGNALS POLE, F&I, PEDESTRIAN PEDESTAL	EA												
650-1-14	TRAFFIC SIGNAL, F&I, ALUMINUM, 3 SECTION, 1 WAY	AS												
653-1-11	PEDESTRIAN SIGNAL, F&I, LED COUNTDOWN, 1 WAY	AS												
653-1-12	PEDESTRIAN SIGNAL, F&I, LED COUNTDOWN, 2 WAY	AS												
660-2-106	LOOP ASSEMBLY, F&I, TYPE F	AS												
665-1-11	PEDESTRIAN DETECTOR, F&I, STANDARD	EA												
670-5-111	TRAFFIC CONTROLLER ASSEMBLY, F&I, NEMA, 1 PREEMPTION	AS												
670-5-600	TRAFFIC CONTROLLER ASSEMBLY, REMOVE CONTROLLER WITH CABINET	AS												
685-106	SYSTEM AUXILIARIES, F&I, UNITERRUPTIBLE POWER SOURCE	EA												
700-5-22	INTERNALLY ILLUMINATED SIGN, FURNISH & INSTALL, OVERHEAD MOUNT, 12-18 SF	EA												

DRAFT

REVISIONS				OM Engineering Services, Inc. 621 E. Washington Street, Suite 8 Orlando, Florida 32801 Phone: 407-704-7815 Fax: 407-704-7816 Certificate of Authorization No: 26637 Robert W. Best, Jr., PE / No: 69875	STATE OF FLORIDA DEPARTMENT OF TRANSPORTATION			TABULATION OF QUANTITIES	SHEET NO.
DATE	DESCRIPTION	DATE	DESCRIPTION		ROAD NO.	COUNTY	FINANCIAL PROJECT ID		T-3
					710	OKEECHOBEE	419344-3-52-01		

NOTICE: THE OFFICIAL RECORD OF THIS SHEET IS THE ELECTRONIC FILE SIGNED AND SEALED UNDER RULE 61G15-23.003, F.A.C.

GENERAL NOTES:

1.) THE SIGNALIZATION PLANS HAVE BEEN PREPARED IN ACCORDANCE WITH THE FLORIDA DEPARTMENT OF TRANSPORTATION'S STANDARD PLANS, DATED 2018. GOVERNING SPECIFICATIONS ARE THE STATE OF FLORIDA, 2018 STANDARD SPECIFICATIONS FOR ROAD AND BRIDGE CONSTRUCTION, AND SUPPLEMENTS THERETO IF NOTED IN THE SPECIAL PROVISIONS FOR THIS PROJECT.

2.) THESE PLANS REFLECT CONDITIONS KNOWN DURING PLAN DEVELOPMENT. IN THE EVENT ACTUAL PHYSICAL CONDITIONS PREVENT THE APPLICATION OR THE PROGRESSION OF ANY WORK SPECIFIED IN THESE PLANS, THE CONTRACTOR SHALL NOTIFY THE ENGINEER IMMEDIATELY AND PRIOR TO ANY FURTHER WORK ACTIVITY.

3.) WHENEVER SIGNAL WORK IS BEING PERFORMED AT AN INTERSECTION (INSTALLING CONDUIT IN THE STREET, REMOVING EXISTING SIGNAL EQUIPMENT, INSTALLING NEW SIGNAL EQUIPMENT, INSTALLING LOOPS AND RUNS) WHERE A LANE IS CLOSED AN OFF-DUTY LAW ENFORCEMENT OFFICER SHALL DIRECT TRAFFIC. THE COST OF THE OFF-DUTY LAW ENFORCEMENT OFFICER SHALL BE INCIDENTAL TO THE WORK AND WILL NOT BE PAID SEPARATELY.

4.) DURING NON-WORKING HOURS, NO EQUIPMENT, VEHICLES OR MATERIAL SHALL BE PARKED OR STORED WITHIN 30 FEET OF THE ROADWAY CARRYING TRAFFIC. IF THE ABOVE IS NOT POSSIBLE, A STORAGE AREA WITH PROPER DELINEATION AND ADVANCED WARNING SHALL BE USED WITH THE APPROVAL OF THE ENGINEER.

5.) WHERE MAST ARM, STRAIN POLES, OR ANY OTHER SIGNAL EQUIPMENT REQUIRING FOUNDATIONS ARE PROPOSED WITHIN 4 FEET OF ANY UNDERGROUND UTILITY, THE UTILITY SHALL BE LOCATED AND PROTECTED AND THE INITIAL 5 FEET OF THE SHAFT INSTALLATION SHALL BE HAND DUG.

6.) COAT ALL THREADED HARDWARE AND MECHANICAL/ELECTRICAL CONNECTION TERMINATIONS WITH AN OXIDE INHIBITOR.

7.) WEATHERPROOF IRREGULAR MATTING SURFACES SUCH AS AREAS INCLUDING SEPARATED SIGNAL COUPLINGS, CONTROLLER CABINET FOUNDATION, PEDESTRIAN PUSH BUTTONS, AND ANY OTHER AREAS TYPICALLY PRONE TO MOISTURE INFILTRATION BY APPLYING A BEAD OF SILICONE CAULK.

8.) WHEREVER A CABLE ENTERS OR EXITS A FIELD-DRILLED HOLE, THE HOLES SHALL BE PROTECTED BY A PERMANENTLY INSTALLED RUBBER GROMMET.

9.) THE INSTALLATION OF CONDUIT AND PULL BOXES FOR IS TO BE COORDINATED WITH UTILITY COMPANIES AS DIRECTED BY PROJECT ENGINEER.

10.) PROJECT ENGINEER IS TO COORDINATE FINAL LOCATION OF PUSHBUTTONS AND CONDUIT IN FIRE STATION WITH STATION PERSONNEL.

11.) A DOUBLE CLEARANCE INTERVAL SHALL BE PROVIDED AT THE TERMINATION OF GREEN ON PHASE. A RED SIGNAL SHALL BE DISPLAYED TO ALL OTHER MOVEMENTS AFTER THEIR NORMAL CLEARANCE TIMING WHILE THE EXTENDED AMBER CLEARANCE (MOVEMENT IS TIMING OUT FOR THE TRACK APPROACH MOVEMENTS).

12.) FOR REMOVED SIGNAL EQUIPMENT CLAIMED BY MAINTAINING AGENCY, CONTACT _____.

13.) MAINTAINING AGENCY: _____

14.) PAVEMENT MARKINGS ARE SHOWN FOR REFERENCE PURPOSES ONLY. FOR PAVEMENT MARKING DESIGN INFORMATION, SEE PAVEMENT MARKING PLANS.

15.) THE FLASHING OPERATION TO BE TERMINATED BY AN ACTUATION FROM THE FIRE STATION WITH A MINIMUM OF 3.5 SECONDS OF STEADY YELLOW CLEARANCE TIME. THE TIMINGS FOR THE EMERGENCY PRE-EMPTION PHASE SHALL BE DETERMINED BY AVERAGING A MINIMUM OF TWO PRACTICE RUNS OF THE EMERGENCY VEHICLES. THIS SHALL BE COORDINATED BY THE CONTRACTOR WITH THE FIRE STATION, MAINTAINING AGENCY, AND PROJECT ENGINEER. A COPY OF THE FINAL TIMINGS SHALL BE SENT TO DISTRICT 1 TRAFFIC OPERATIONS ENGINEER, P.O. BOX 1249, BARTOW, FLORIDA 33831.

16.) _____ POWER COMPANY TO ASSIST CONTRACTOR IN PERFORMING ALL NECESSARY WORK UNDER THEIR POWER LINES, SUCH AS THE INSTALLATION OF SPAN WIRE, SIGNAL CABLE, FIBERGLASS INSULATORS AND SIGNAL POLES. CONTRACTOR TO NOTIFY THE POWER COMPANY AT LEAST THREE (3) FULL BUSINESS DAYS PRIOR TO INSTALLATION OF THIS EQUIPMENT.

17. CONTACT THE MAINTAINING AGENCY _____, AT TELEPHONE NUMBER _____, FOR THE ASSIGNMENT OF THE PHYSICAL ADDRESS ONCE THE SERVICE DROP LOCATION HAS BEEN ESTABLISHED.

18.) AT LEAST TWO (2) FULL BUSINESS DAYS PRIOR TO BEGINNING THE TRAFFIC SIGNAL INSTALLATION, CONTACT THE TRAFFIC SIGNAL INSPECTOR/LIAISON:

HIGHLANDS AND OKEECHOBEE COUNTY
CLINT MINGUS
FLORIDA DEPARTMENT OF TRANSPORTATION
HEARTLAND OPERATIONS CENTER - SEBRING
4722 KENILWORTH BLVD.
SEBRING, FL 33830
PH: 863-471-4861 CELL: 963-991-354

19.) WHEN CONSTRUCTION IS COMPLETE, PROVIDE A SET OF "AS-BUILT" PLANS IN ELECTRONIC FORM (PDF) TO:

FDOT TRAFFIC OPERATIONS
RENJAN JOSEPH, P.E., FDOT ARTERIAL MANAGEMENT SYSTEM ENGINEER
801 N. BROADWAY AVE.
BARTOW, FL 33830-1249
EMAIL: RENJAN.JOSEPH@DOT.STATE.FL.US
PHONE: 863-519-2746

THE LOCATION(S) OF THE UTILITIES SHOWN IN THE PLANS (INCLUDING THOSE DESIGNATED Vv Vh AND Vvh) ARE BASED ON LIMITED INVESTIGATION TECHNIQUES AND SHOULD BE CONSIDERED APPROXIMATE ONLY. THE VERIFIED LOCATION/ELEVATIONS APPLY ONLY AT THE POINTS SHOWN. INTERPOLATIONS BETWEEN POINTS HAVE NOT BEEN VERIFIED.

PAY ITEM NOTES:

630-2-11 AND 630-2-12:

USE A MINIMUM OF 2" DIAMETER CONDUIT FOR FIBER OPTIC INTERCONNECT CABLE.

USE A MINIMUM OF 3" DIAMETER CONDUIT FOR FIBER OPTIC INTERCONNECT CABLE.

USE 2" DIAMETER HDPE CONDUIT COLORED ORANGE FOR FIBER OPTIC INTERCONNECT CABLE.

USE A MINIMUM OF 3" DIAMETER CONDUIT FOR ALL DIRECTIONAL BORE UNLESS OTHERWISE NOTED IN THE PLANS.

NOTCH CONDUIT FOR RIGHT ANGLE CABLE ENTRY AND USE REMOVABLE PVC PRESSURE CAPS TO SEAL CONDUIT.

USE FOUR (4) RUNS OF 1-1/4" DIAMETER SDR 13.5 POLY CONDUITS (GREEN, BLUE, ORANGE AND YELLOW) (USE A # 10 COPPER WIRE IN THE ORANGE CONDUIT FOR LOCATION PURPOSES) FOR INTERCONNECT CABLE.

630-2-14:

USE ABOVE-GROUND CONDUIT FOR VERTICAL RUNS ON EXISTING POLES AS SHOWN IN PLANS WHEN SIGNAL CABLE AND/OR OTHER CABLES CANNOT BE INSTALLED IN EXISTING POLES.

USE RIGID GALVANIZED CONDUIT (HEAVY-WALL) FOR ABOVE GROUND CONDUIT INSTALLATIONS WITH A MINIMUM OF SIX INCHES UNDERGROUND.

630-2-12:

USE MULTIPLE CONDUITS (PVC OR EQUAL) INSTALLED IN ONE JACKED SLEEVE UNDER RAILROAD TRACK FOR UNDERGROUND JACKED CONDUIT. SEE PLAN SHEET(S) FOR NUMBER OF CONDUITS TO BE INSTALLED IN JACKED SLEEVE.

632-7-1:

COMPLETELY REWIRE INTERSECTION AT ALL SIGNAL LOCATIONS.

UTILIZE SIGNAL CABLE FOR CONNECTING YELLOW FLASHER FOR FLASHING GROUND-MOUNT SIGN TO TYPE 1 FLASHER INSTALLED IN THE CONTROLLER CABINET.

SPLICE SIGNAL CABLE TO A SEPARATE CABLE (FOR EACH SIGNAL HEAD) IN THE BASE OF MAST ARM STRUCTURES. EACH SEPARATE CABLE SHALL HAVE A MINIMUM OF 0.5' DIAMETER LOOP FOR FUTURE SPLICING. A PERMANENT MARKING IS TO BE PLACED ON THE WIRE DESIGNATING THE PHASE USED. SPARE CONDUCTORS TO BE GROUNDED TO GROUND BAR IN SIGNAL CABINET.

SPLICE SIGNAL CABLE TO A SEPARATE CABLE (FOR EACH SIGNAL HEAD AND INTERNALLY ILLUMINATED STREET NAME SIGN) IN THE BASE OF MAST ARM STRUCTURES UTILIZING A TERMINAL STRIP. A PERMANENT MARKING IS TO BE PLACED ON THE WIRE DESIGNATING THE PHASE USED.

VERIFY THE COLOR CODE OF SIGNAL CABLE WITH THE MAINTAINING AGENCY PRIOR TO WIRING INTERSECTION.

USE A MINIMUM OF 7 CONDUCTOR SIGNAL CABLE FOR SIGNAL HEADS AND PEDESTRIAN HEADS.

USE ONE SIXTEEN CONDUCTOR SIGNAL CABLE BETWEEN THE SIGNAL CONTROLLER AND EACH SINGLE MAST ARM POLE. USE TWO SIXTEEN CONDUCTOR SIGNAL CABLES BETWEEN THE SIGNAL CONTROLLER AND EACH DOUBLE ARM MAST ARM POLE. SIGNAL CABLE TO BE TERMINATED IN THE CONTROLLER AND MAST ARM POLE TERMINAL STRIP.

EACH PEDESTRIAN PUSH BUTTON IS TO BE WIRED WITH A DEDICATED CABLE, CONTINUOUS ALL THE WAY BACK TO THE CONTROLLER CABINET.

634-4-143:

CATENARY WIRE SIZE ___/___ INCH AND MESSENGER WIRE SIZE ___/___ INCH.

635-2-11:

APPROPRIATELY SIZE EACH PULL BOX SO THE FIBER OPTIC COMMUNICATION AND/OR INTERCONNECT CABLE DOES NOT EXCEED MANUFACTURERS RECOMMENDED BENDING RADIUS.

PULL BOXES ARE TO BE PLACED BEHIND CURB AND GUTTER. IF THERE IS NO CURB AND GUTTER, PULL BOXES SHALL BE PLACED A MINIMUM OF 7' FROM THE EDGE OF PAVEMENT.

USE POLYMER CONCRETE CONSTRUCTION PULL BOXES WITH POLYMER CONCRETE COVERS.

CONSTRUCT A SIX INCH (6") THICK CONCRETE PAD TWO FEET (2') BEYOND PULL BOX WITH REINFORCED WELDED WIRE (SIX INCH (6") x SIX INCH (6") W6 X W6).

639-1-122 AND 639-3-11:

USE ALUMINUM RIGID ABOVEGROUND CONDUIT FOR ELECTRICAL POWER SERVICE.

639-2-1:

USE A BONDING WIRE FROM ELECTRICAL SERVICE POINT TO CONTROLLER.

641-2-__:

USE TWO 2" CONDUITS (EXCEPT FOR THE POLE LOCATED ADJACENT TO THE CONTROLLER CABINET WHICH SHALL HAVE THREE 2" CONDUITS) STUBBED OUT THROUGH PRESTRESSED CONCRETE POLE FOOTER AND TEMPORARILY SEAL.

ADD AUXILIARY HOLES FOR FUTURE SIGNALIZATION.

REVISIONS				OM Engineering Services, Inc. 621 E. Washington Street, Suite 8 Orlando, Florida 32801 Phone: 407-704-7815 Fax: 407-704-7816 Certificate of Authorization No: 26637 Robert W. Best, Jr., PE / No: 69875	STATE OF FLORIDA DEPARTMENT OF TRANSPORTATION			SHEET NO. T-4
DATE	DESCRIPTION	DATE	DESCRIPTION		ROAD NO.	COUNTY	FINANCIAL PROJECT ID	
					710	OKEECHOBEE	419344-3-52-01	

GENERAL NOTES

NOTICE: THE OFFICIAL RECORD OF THIS SHEET IS THE ELECTRONIC FILE SIGNED AND SEALED UNDER RULE 61G15-23.003, F.A.C.

646-1-11:

USE LOCKING COLLARS WHEN MOUNTING ALUMINUM PEDESTRIAN POLES TO PEDESTRIAN PEDESTAL BASES.

USE BREAKAWAY ALUMINUM SQUARE BASE ASSEMBLIES WITH ALUMINUM DOORS FOR PEDESTRIAN PEDESTALS.

650-1-14:

USE RED, YELLOW, GREEN, AND WHITE THHN #14 COPPER WIRES FROM DISCONNECT TO SIGNAL HEAD. PLACE A PERMANENT MARKING ON THE WIRE DESIGNATING THE PHASE USED.

USE LOUVERED ALUMINUM SIGNAL HEAD BACK PLATES WITH A 2" YELLOW REFLECTORIZED OUTER EDGE BORDER.

BACK PLATES TO BE ONE-PIECE ALUMINUM.

653-1-11 AND 653-1-12:

MOUNT PEDESTRIAN SIGNAL HEADS 9'-6" ABOVE GRADE.

PEDESTRIAN SIGNAL HEADS TO BE 16" INTERNATIONAL SYMBOL, LED COUNTDOWN TYPE.

665-1-11:

USE PEDESTRIAN BUTTON SIGNAL SIGN FTP-68B-06 OR R103e. STREET NAME SHALL BE IN ACCORDANCE WITH THE STREET NAMES SHOWN ON THE SIGNALIZATION PLAN SHEETS.

USE AUDIBLE PUSHBUTTONS (VOICE SYNTHESIZED) WITH VISUAL INDICATION TYPE. INSTALL IN ACCORDANCE WITH MANUFACTURER'S SPECIFICATIONS.

USE TWO TONE TYPE PUSHBUTTONS WITH VISUAL INDICATION AND NON-LATCHING MOMENTARY.

DRILL AND TAP ALUMINUM PEDESTAL FOR MOUNTING PEDESTRIAN DETECTOR AND SIGNS.

685-1-06:

INCLUDE AN UNINTERRUPTIBLE POWER SUPPLY UNIT (UPS). ATTACH UPS UNIT TO THE OUTSIDE OF THE CONTROLLER CABINET. INSTALL UPS UNIT IN ACCORDANCE WITH MANUFACTURER'S RECOMMENDATIONS. UPS EQUIPMENT TO BE COMPATIBLE WITH MAINTAINING AGENCY'S EXISTING SYSTEM.

700-5-22:

USE LED INTERNALLY ILLUMINATED STREET NAME SIGNS.
USE LED (EDGE LIT TYPE) INTERNALLY ILLUMINATED STREET NAME SIGNS.

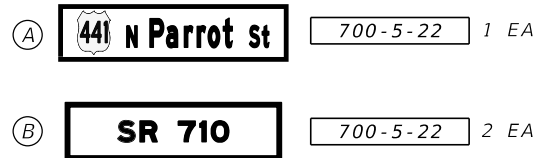
INSTALL PHOTOELECTRIC CELL FOR INTERNALLY ILLUMINATED STREET NAME SIGNS IN TRAFFIC SIGNAL ELECTRICAL SERVICE DISCONNECT.

DRAFT

REVISIONS				OM Engineering Services, Inc. 621 E. Washington Street, Suite 8 Orlando, Florida 32801 Phone: 407-704-7815 Fax: 407-704-7816 Certificate of Authorization No: 26637 Robert W. Best, Jr., PE / No: 69875	STATE OF FLORIDA DEPARTMENT OF TRANSPORTATION			GENERAL NOTES	SHEET NO.
DATE	DESCRIPTION	DATE	DESCRIPTION		ROAD NO.	COUNTY	FINANCIAL PROJECT ID		
					710	OKEECHOBEE	419344-3-52-01		T-5

NOTICE: THE OFFICIAL RECORD OF THIS SHEET IS THE ELECTRONIC FILE SIGNED AND SEALED UNDER RULE 61G15-23.003, F.A.C.

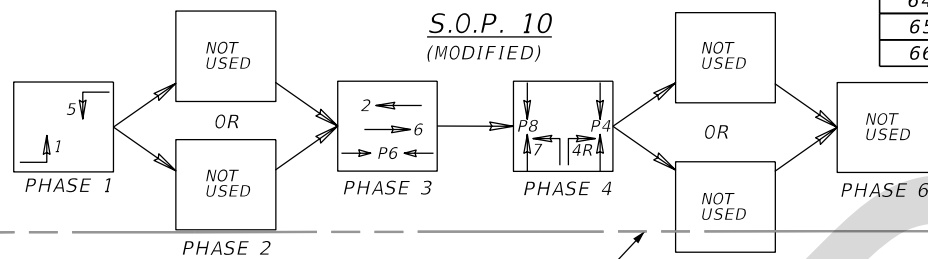
INTERNALLY ILLUMINATED STREET NAME SIGN DETAILS



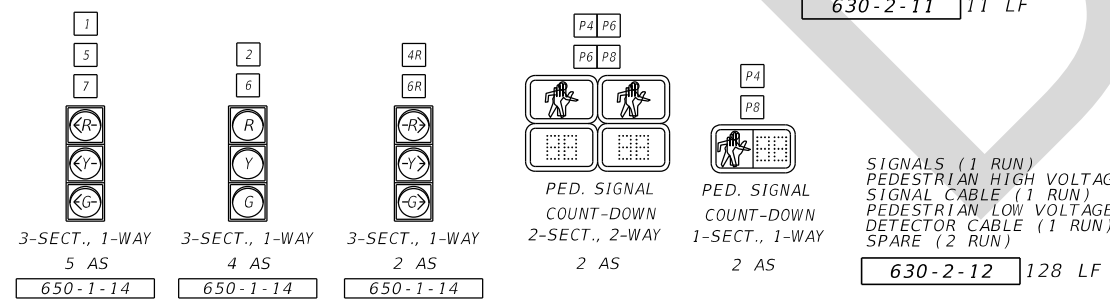
- NOTES:
- 700-5-22 SIGNS SHALL BE CANTILEVER ARM MOUNTED.
 - SEE SHEET S-64 FOR SIGN DETAILS.
 - SIGN ASSEMBLY A SHALL BE SINGLE-PANEL, ONE WAY INTERNALLY ILLUMINATED STREET SIGN ASSEMBLY.
 - SIGN ASSEMBLY B SHALL BE DOUBLE-PANEL, TWO WAY INTERNALLY ILLUMINATED STREET SIGN ASSEMBLY.

CONTROLLER TIMINGS								
TIMING FUNCTION	1	2	3	4	5	6	7	8
MOVEMENT NUMBER	1	2	3	4	5	6	7	8
MINIMUM GREEN	15	36.8	-	36	15	36.8	36	-
EXTENSION	-	-	-	-	-	-	-	-
MAXIMUM GREEN 1	-	-	-	-	-	-	-	-
MAXIMUM GREEN 2	-	-	-	-	-	-	-	-
YELLOW CLEARANCE	4.8	4.8	-	4.4	4.8	4.8	4.4	-
ALL RED	2.8	3.1	-	3.2	2.8	3.1	3.2	-
PEDESTRIAN WALK	-	-	-	7	-	7	7	-
PED. CLEARANCE	-	-	-	27.1	-	23.4	29.0	-
RECALL	-	-	-	-	-	-	-	-
DETECTOR FUNCTION	-	-	-	-	-	-	-	-

- NOTES:
- MAJOR STREET IS N PARROT AVE. (US 441) MOVEMENTS 1, 2, 5, AND 6. THE MINOR SIDE STREET IS SR 710 MOVEMENTS 4R AND 7.



SIGNAL HEAD DETAILS



ILLUMINATED SIGNS (1 RUN)
SIGNALS (1 RUN)
PEDESTRIAN HIGH VOLTAGE SIGNAL CABLE (1 RUN)
PEDESTRIAN LOW VOLTAGE DETECTOR CABLE (1 RUN)
LOOP (1 RUN)
SPARE (2 RUN)

630-2-11 29 LF

630-2-12 125 LF

630-2-11 19 LF

1 EA 641-2-XX
1 AS 653-1-11
1 EA 665-1-11

POLE LOCATION= STA. 278+22.21 60.99 LT

1 AS 653-1-12
1 EA 646-1-11
2 EA 665-1-11

ILLUMINATED SIGNS (1 RUN)
SIGNALS (1 RUN)
PEDESTRIAN HIGH VOLTAGE SIGNAL CABLE (1 RUN)
PEDESTRIAN LOW VOLTAGE DETECTOR CABLE (1 RUN)
LOOP (1 RUN)
SPARE (2 RUN)

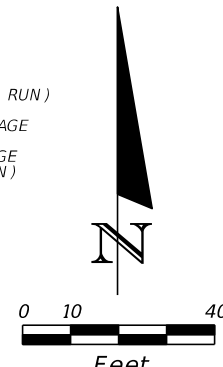
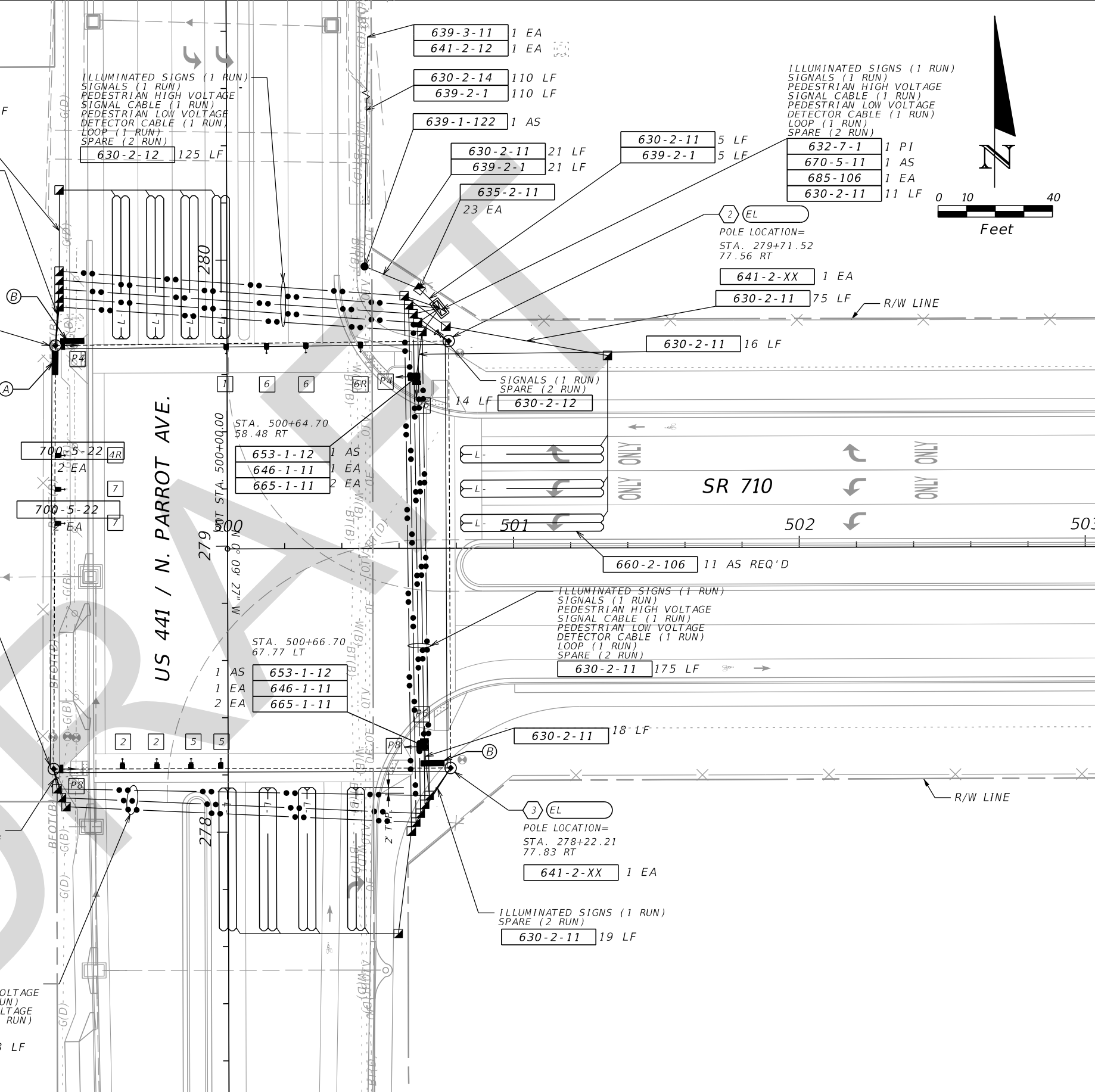
630-2-11 175 LF

POLE LOCATION= STA. 278+22.21 77.83 RT

1 EA 641-2-XX

ILLUMINATED SIGNS (1 RUN)
SIGNALS (1 RUN)
PEDESTRIAN HIGH VOLTAGE SIGNAL CABLE (1 RUN)
PEDESTRIAN LOW VOLTAGE DETECTOR CABLE (1 RUN)
LOOP (1 RUN)
SPARE (2 RUN)

630-2-11 19 LF



REVISIONS			
DATE	DESCRIPTION	DATE	DESCRIPTION

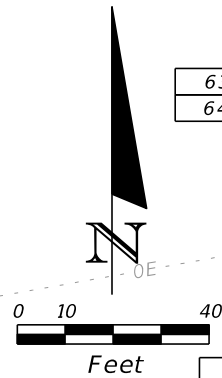
OM Engineering Services, Inc.
621 E. Washington Street, Suite 8
Orlando, Florida 32801
Phone: 407-704-7815 Fax: 407-704-7816
Certificate of Authorization No: 26637
Robert W. Best, Jr., PE / No: 69875

STATE OF FLORIDA DEPARTMENT OF TRANSPORTATION		
ROAD NO.	COUNTY	FINANCIAL PROJECT ID
710	OKEECHOBEE	419344-3-52-01

SIGNALIZATION PLAN
US 441 & SR 710

SHEET NO.
T-6

NOTICE: THE OFFICIAL RECORD OF THIS SHEET IS THE ELECTRONIC FILE SIGNED AND SEALED UNDER RULE 61G15-23.003, F.A.C.



ILLUMINATED SIGNS (1 RUN)
SIGNALS (1 RUN)
PEDESTRIAN HIGH VOLTAGE
SIGNAL CABLE (1 RUN)
PEDESTRIAN LOW VOLTAGE
DETECTOR CABLE (1 RUN)
LOOP (1 RUN)
SPARE (2 RUN)
630-2-11 16 LF

STA. 637+77.72
56.14 RT
1 EA 646-1-11
1 AS 653-1-11
1 EA 665-1-11

641-2-XX 1 EA
653-1-11 1 AS

ILLUMINATED SIGNS (1 RUN)
SIGNALS (1 RUN)
PEDESTRIAN HIGH VOLTAGE
SIGNAL CABLE (1 RUN)
PEDESTRIAN LOW VOLTAGE
DETECTOR CABLE (1 RUN)
SPARE (2 RUN)
630-2-11 32 LF

639-1-122 1 AS
630-2-11 27 LF
639-2-1 27 LF

632-7-14 1 PI
670-5-11 1 AS
685-106-1 1 EA

STA. 637+68.39
49.05 LT
646-1-11 1 EA
653-1-12 1 AS
665-1-11 1 EA
630-2-11 6 LF

STA. 637+78.63
47.21 LT
646-1-11 1 EA
653-1-11 1 AS
665-1-11 1 EA
630-2-11 7 LF

STA. 637+75.59
60.54 LT
646-1-11 1 EA
653-1-11 1 AS
665-1-11 1 EA
630-2-11 1 LF

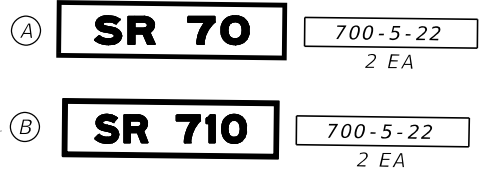
STA. 637+31.63
75.60 LT
646-1-11 1 EA
653-1-11 1 AS
665-1-11 1 EA

POLE LOCATION=
STA. 637+35.56
108.66 LT
641-2-XX 1 EA

CONTROLLER TIMINGS								
TIMING FUNCTION	1	2	3	4	5	6	7	8
MOVEMENT NUMBER	1	2	3	4	5	6	7	8
MINIMUM GREEN	9	31.2	18	20.3	9	31.2	18	20.3
EXTENSION	-	-	-	-	-	-	-	-
MAXIMUM GREEN 1	-	-	-	-	-	-	-	-
MAXIMUM GREEN 2	-	-	-	-	-	-	-	-
YELLOW CLEARANCE	4.8	4.8	4.8	4.8	4.8	4.8	4.8	4.8
ALL RED	3	2.7	2.8	2.8	3.0	2.7	2.8	2.8
PEDESTRIAN WALK	-	7	-	7	-	7	-	7
PED. CLEARANCE	-	25	-	32	-	28.3	-	29
RECALL	-	-	-	-	-	-	-	-
DETECTOR FUNCTION	-	-	-	-	-	-	-	-

NOTES:
1. MAJOR STREET IS SR 70 MOVEMENTS 1, 2, 5, AND 6. THE MINOR SIDE STREET IS SR 710 MOVEMENTS 3, 4, 7, AND 8.

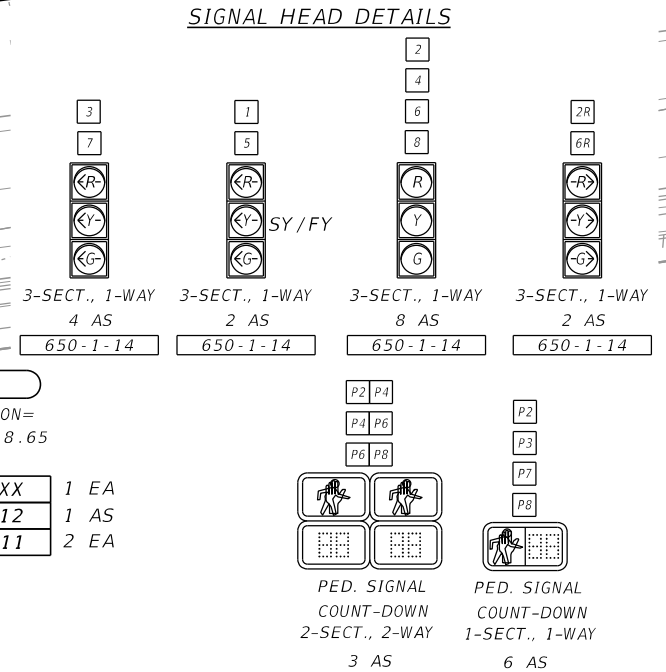
INTERNALLY ILLUMINATED STREET NAME SIGN DETAILS



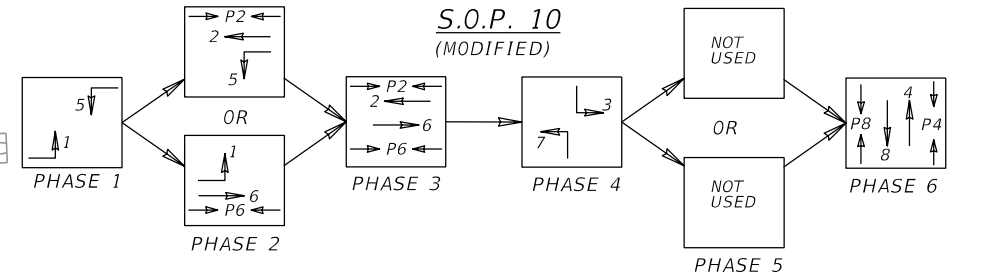
NOTES:
1. 700-5-22 SIGNS SHALL BE CANTILEVER ARM MOUNTED.
2. SEE SHEET S-64 FOR SIGN DETAILS.
3. SIGN ASSEMBLIES SHALL BE DOUBLE-PANEL, TWO WAY INTERNALLY ILLUMINATED STREET SIGN ASSEMBLIES.

POLE LOCATION=
STA. 639+20.92
54.46 RT
641-2-XX 1 EA
653-1-11 1 AS
653-1-12 1 AS

STA. 639+58.54
74.65 RT
1 EA 646-1-11
1 AS 653-1-11
1 EA 665-1-11



ILLUMINATED SIGNS (1 RUN)
SIGNALS (1 RUN)
PEDESTRIAN HIGH VOLTAGE
SIGNAL CABLE (1 RUN)
PEDESTRIAN LOW VOLTAGE
DETECTOR CABLE (1 RUN)
SPARE (2 RUN)
630-2-11 16 LF
630-2-11 37 LF



REVISIONS			
DATE	DESCRIPTION	DATE	DESCRIPTION

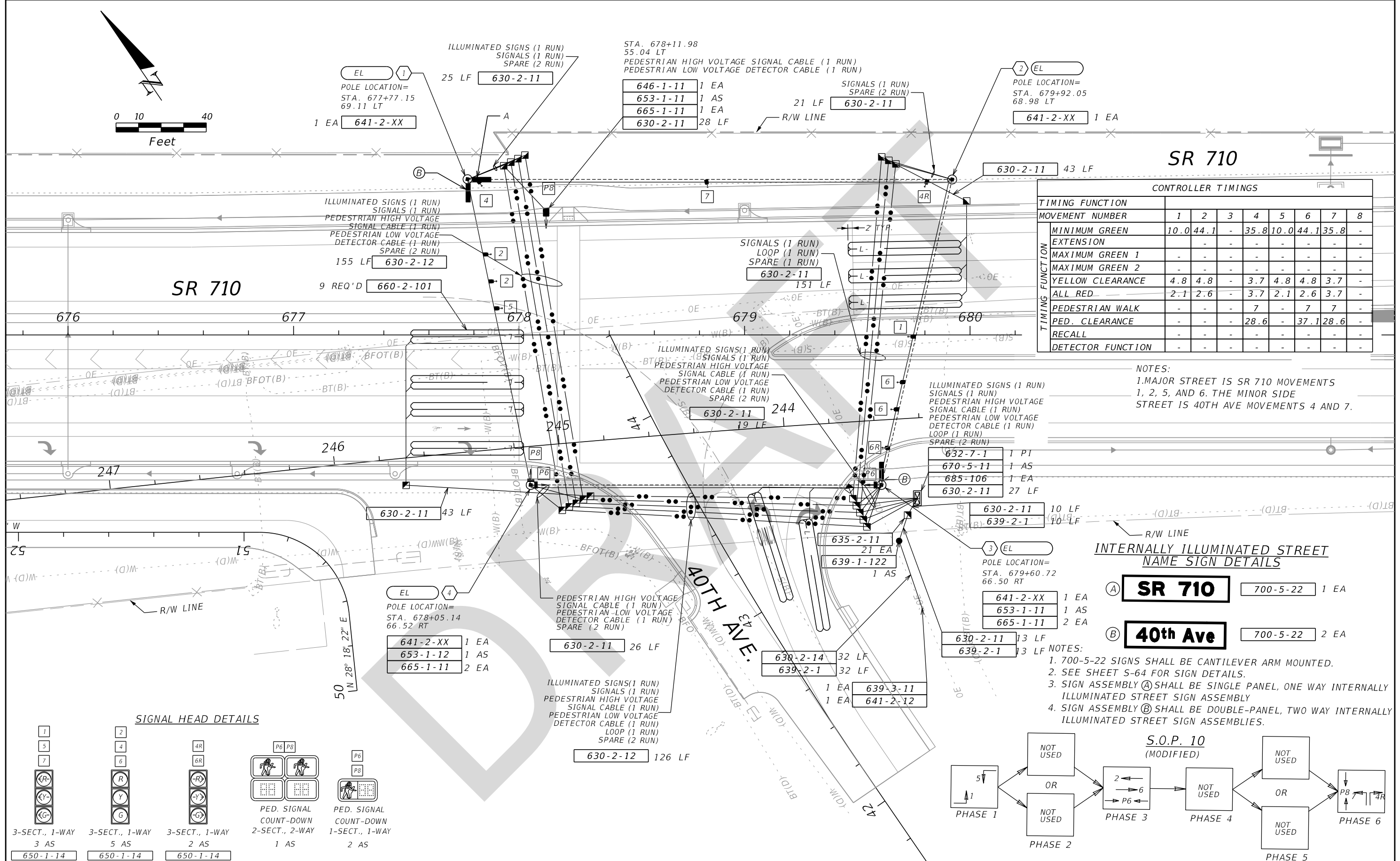
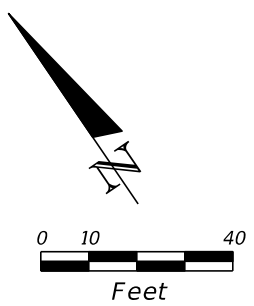
OM Engineering Services, Inc.
621 E. Washington Street, Suite 8
Orlando, Florida 32801
Phone: 407-704-7815 Fax: 407-704-7816
Certificate of Authorization No: 26637
Robert W. Best, Jr., PE / No: 69875

STATE OF FLORIDA DEPARTMENT OF TRANSPORTATION		
ROAD NO.	COUNTY	FINANCIAL PROJECT ID
710	OKEECHOBEE	419344-3-52-01

SIGNALIZATION PLAN
SR 70 & SR 710

SHEET NO.
T-7

NOTICE: THE OFFICIAL RECORD OF THIS SHEET IS THE ELECTRONIC FILE SIGNED AND SEALED UNDER RULE 61G15-23.003, F.A.C.



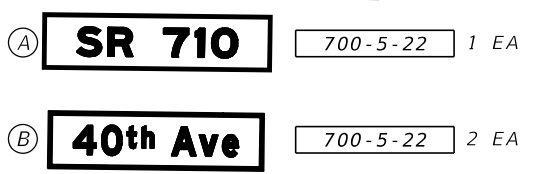
SR 710

CONTROLLER TIMINGS

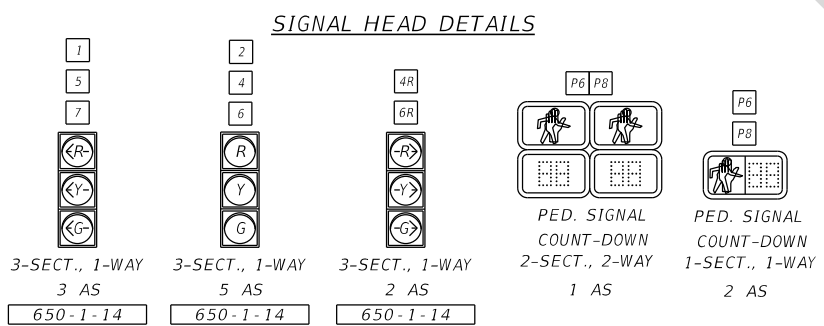
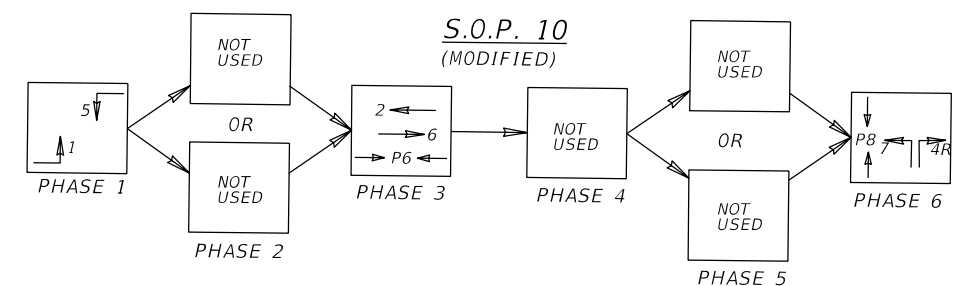
TIMING FUNCTION	1	2	3	4	5	6	7	8
MOVEMENT NUMBER	1	2	3	4	5	6	7	8
MINIMUM GREEN	10.0	44.1	-	35.8	10.0	44.1	35.8	-
EXTENSION	-	-	-	-	-	-	-	-
MAXIMUM GREEN 1	-	-	-	-	-	-	-	-
MAXIMUM GREEN 2	-	-	-	-	-	-	-	-
YELLOW CLEARANCE	4.8	4.8	-	3.7	4.8	4.8	3.7	-
ALL RED	2.1	2.6	-	3.7	2.1	2.6	3.7	-
PEDESTRIAN WALK	-	-	-	7	-	7	7	-
PED. CLEARANCE	-	-	-	28.6	-	37.1	28.6	-
RECALL	-	-	-	-	-	-	-	-
DETECTOR FUNCTION	-	-	-	-	-	-	-	-

NOTES:
 1. MAJOR STREET IS SR 710 MOVEMENTS 1, 2, 5, AND 6. THE MINOR SIDE STREET IS 40TH AVE MOVEMENTS 4 AND 7.

INTERNALLY ILLUMINATED STREET NAME SIGN DETAILS



- NOTES:
- 700-5-22 SIGNS SHALL BE CANTILEVER ARM MOUNTED.
 - SEE SHEET S-64 FOR SIGN DETAILS.
 - SIGN ASSEMBLY (A) SHALL BE SINGLE PANEL, ONE WAY INTERNALLY ILLUMINATED STREET SIGN ASSEMBLY
 - SIGN ASSEMBLY (B) SHALL BE DOUBLE-PANEL, TWO WAY INTERNALLY ILLUMINATED STREET SIGN ASSEMBLIES.



REVISIONS			
DATE	DESCRIPTION	DATE	DESCRIPTION

OM Engineering Services, Inc.
 621 E. Washington Street, Suite 8
 Orlando, Florida 32801
 Phone: 407-704-7815 Fax: 407-704-7816
 Certificate of Authorization No: 26637
 Robert W. Best, Jr., PE / No: 69875

STATE OF FLORIDA DEPARTMENT OF TRANSPORTATION		
ROAD NO.	COUNTY	FINANCIAL PROJECT ID
710	OKEECHOBEE	419344-3-52-01

SIGNALIZATION PLAN
40TH AVE. & SR 710

SHEET NO.
T-8

NOTICE: THE OFFICIAL RECORD OF THIS SHEET IS THE ELECTRONIC FILE SIGNED AND SEALED UNDER RULE 61G15-23.003, F.A.C.

