



# US 41 at Bonita Beach Road (CR 865) Intersection Project Development and Environment (PD&E) Study Bonita Springs, Florida

FPID: 444321-1

## PUBLIC HEARING – Tuesday, March 26, 2024

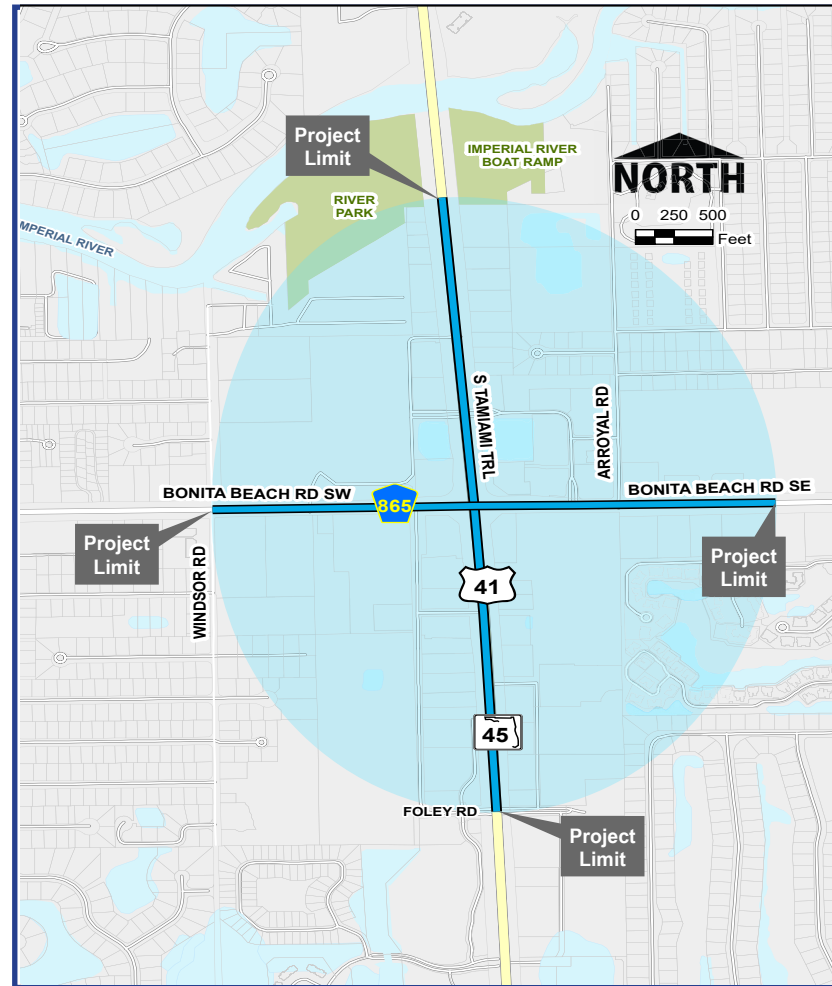
### INTRODUCTION

The Florida Department of Transportation (FDOT), District One, welcomes you to a public hearing for the US 41 at Bonita Beach Road (CR 865) Project Development and Environment (PD&E) Study. The study limits are within the City of Bonita Springs, in southern Lee County.

This study evaluates potential capacity and safety improvements, as well as multi-modal features to address congestion and meet future demand. Additional components under consideration include crosswalks with a pedestrian hybrid beacon, a new transit stop, and 12-foot wide shared-use paths at all intersection approaches. This hearing gives interested persons the opportunity to express their views about the proposed improvements at the intersection of US 41 and Bonita Beach Road (CR 865).

On display this evening are maps, display boards, and project related information. The project team is available to discuss the study and answer questions.

**Spoken statements during the public testimony and written statements submitted at the hearing, emailed, submitted on the project website, or postmarked by April 5, 2024, will become part of the official hearing record.**



### ABOUT THE PROJECT

Both US 41 and Bonita Beach Road serve as critical corridors in facilitating regional and local traffic within Lee County, as well as designated emergency evacuation routes. The PD&E Study began in 2019, and throughout the study process, FDOT has looked at many different concepts. After environmental and engineering analyses, public and agency comments, and following the Alternatives Public Workshop held on April 4, 2023, the Partial Displaced Left Turn Alternative was selected as the preferred alternative. Following this public hearing, the location and design concept of the preferred alternative will be submitted to the FDOT Office of Environmental Management for review. At this time, FDOT’s Adopted Five-Year Work Program does not yet include funding for future phases, such as final design. The Department anticipates completion of this PD&E Study by the fall of 2024.

### HEARING SCHEDULE AND WHAT TO EXPECT

#### 5 p.m. Open House | 6 p.m. Formal Presentation

##### Welcome Area:

- Sign-in Table
- Project Handout
- Technical Document Display
- Comments Table

##### Exhibit Area:

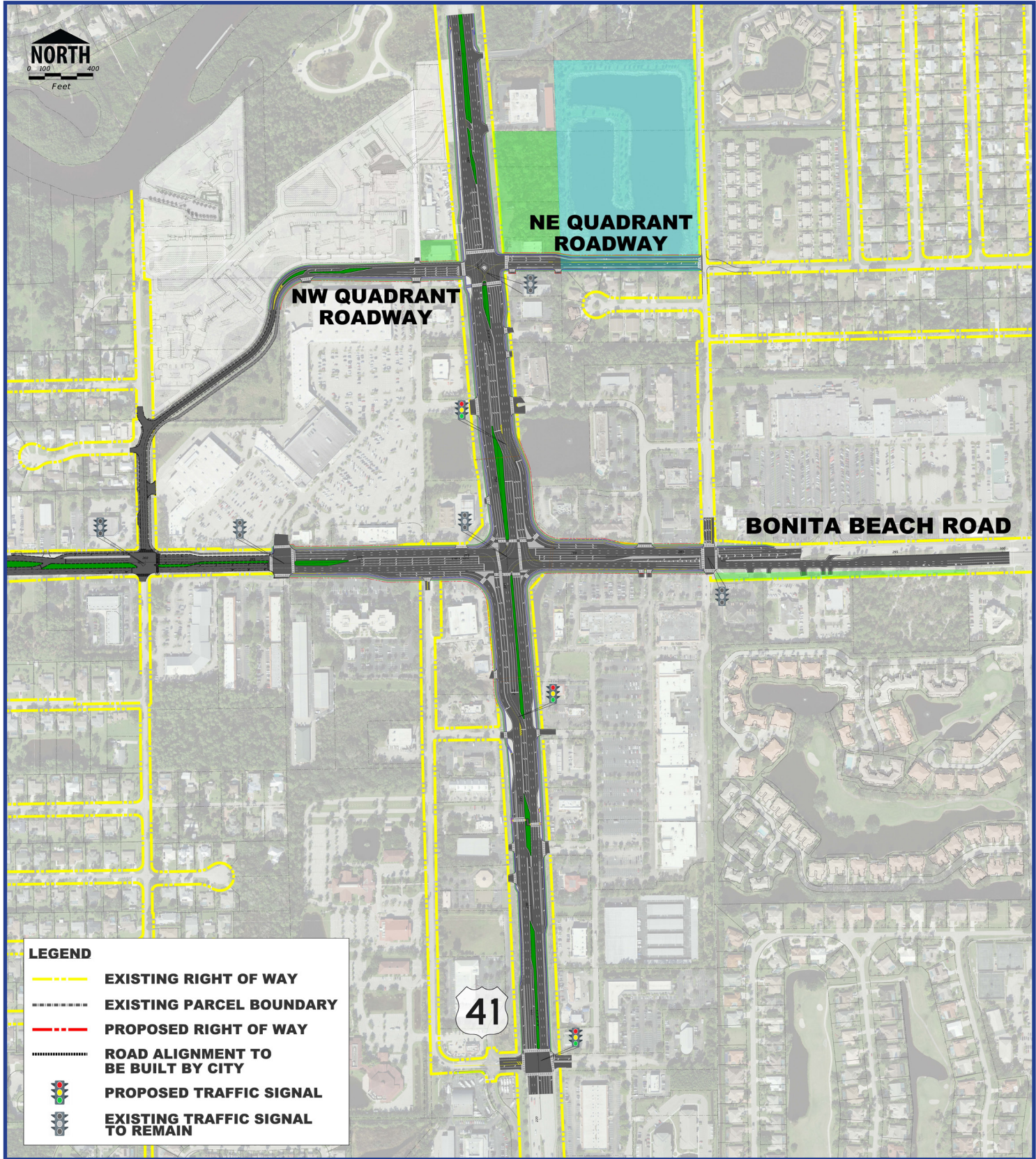
- Project Displays
- Project Team available for questions and answers
- Comments Tables
- Exhibit Videos

##### Presentation Area:

- Project Video (looping until 6 pm)
- Formal presentation and public testimony (begins at 6 pm)

# PREFERRED ALTERNATIVE

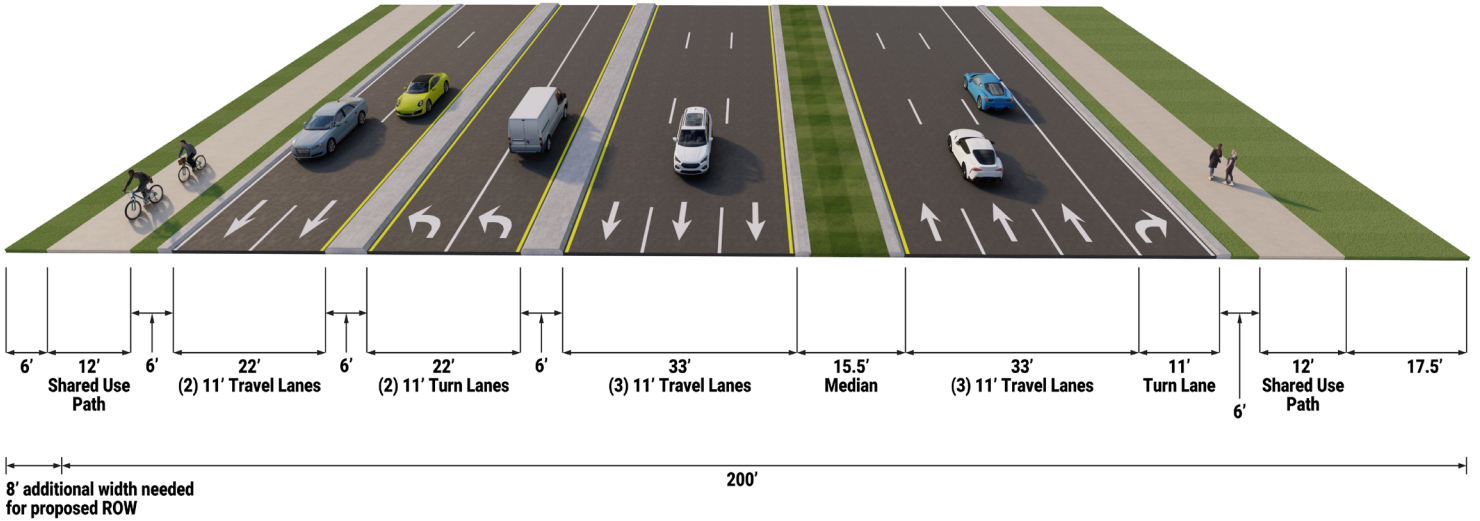
The preferred alternative for the US 41 and Bonita Beach Road intersection is a Partial Displaced Left Turn with the northeast quadrant roadway and enhancing the northwest quadrant roadway. The primary feature of a partial displaced left turn intersection is moving left turn movements on an approach to the other side of opposing traffic flow, known as a “crossover” movement. Crossover movements stop at Bonita Beach Road awaiting the green signal. There is no separate US 41 left turn signal phase.



## PROPOSED TYPICAL SECTIONS - US 41

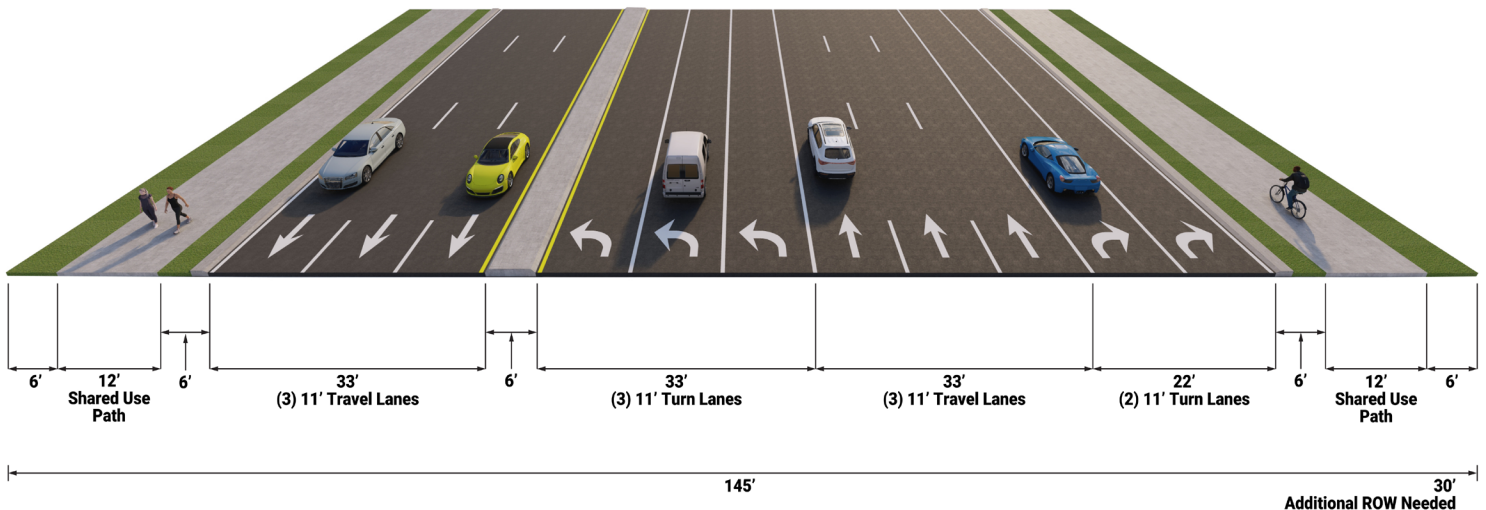
US 41 between crossover intersections includes: a 6-lane divided roadway, 11-foot wide travel lanes, separated left turn movements between opposing through and right turn movements, and 12-foot shared-use paths on both sides of the roadway.

### PARTIAL DISPLACED LEFT-TURN INTERSECTION PROPOSED TYPICAL SECTION



### PROPOSED TYPICAL SECTION - Bonita Beach Road

Bonita Beach Road will be widened to six lanes through the US 41 intersection. The widening would begin at the signal serving the Center of Bonita Springs and extend east to Spanish Wells Boulevard. The posted speed limit would remain 45 miles per hour.



# EVALUATION MATRIX

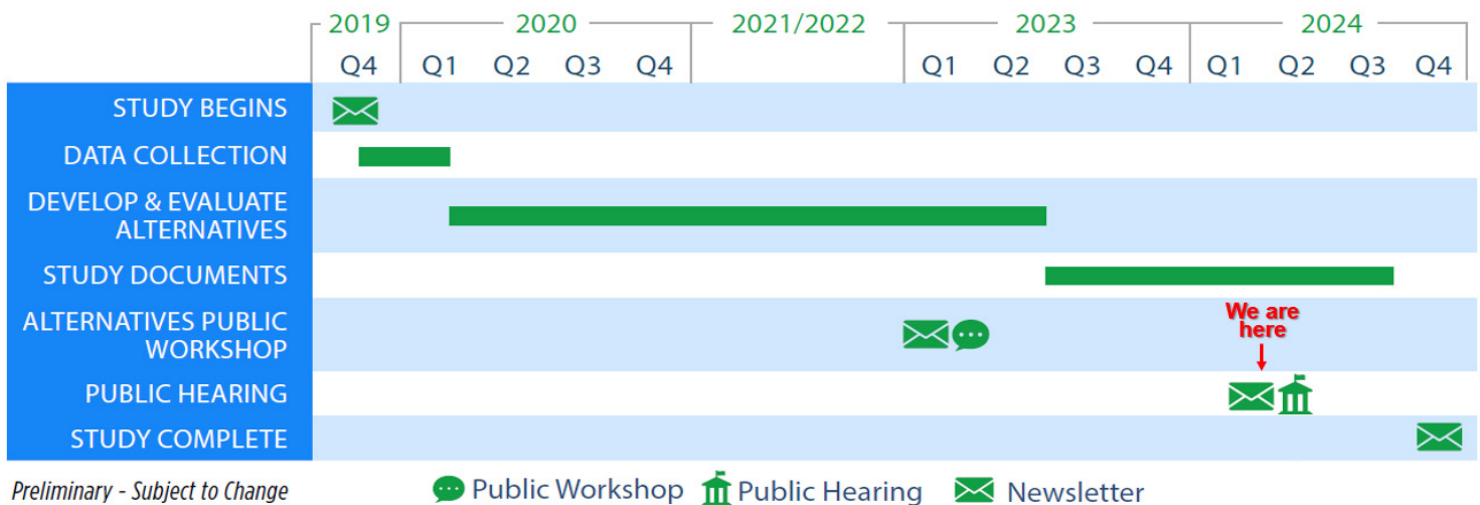
## US 41 at Bonita Beach Road PD&E Study Evaluation Matrix

EVALUATION FACTORS	Partial Displaced Left Turn (PDLT)	No Build
<b>ABILITY TO MEET PURPOSE AND NEED</b>		
Improves Traffic Operations and Accommodates Future Demand	✓	X
Improves Safety and Enhances Emergency Evacuation and Response Times	✓	X
Enhances Mobility Options and Multi-Modal Access	✓	X
Enhances System Linkage for Region	✓	X
<b>POTENTIAL RIGHT OF WAY IMPACTS</b>		
Relocations (#Business/#Residential/#Other)	2 / 0 / 0	0
Parcels (#Business/#Residential/#Other)	14 / 2 / 7	0
Right of Way to be Acquired (acres)	8.4	0
<b>TRAFFIC OPERATIONS</b>		
2050 Average Vehicle Delay in Seconds (Midday/PM)	137/199	346/427
2050 US 41/Bonita Beach Rd. Levels of Service (Midday/PM)	C/D	F/F
<b>POTENTIAL ENVIRONMENTAL EFFECTS</b>		
Threatened/Endangered Species and Habitat	Low	N/A
Wetlands (acres)	3.7	0
Floodplains (acres)	8.2	0
Water Quality/Stormwater Management	Improved	No Change
Archaeological Resources	None	N/A
Historical Resources	0	0
Public Recreation Resources (#)	1	0
Noise Sensitive Receptors (#)	1	0
Contamination Sites (#Medium/#High Risk)	5 / 2	0 / 0
Utility Agencies/Owners Impacted (#)	9	0
<b>ESTIMATED PROJECT COSTS (2023/2024 \$\$)</b>		
Right of Way for Roadway	\$22,100,000	\$0
Wetland Mitigation	\$300,000	\$0
Design	\$3,500,000	\$0
Construction	\$32,060,000	\$0
Construction Engineering and Inspection	\$3,850,000	\$0
<b>Preliminary Estimate of Total Project Cost<sup>1</sup></b>	<b>\$61,810,000</b>	<b>\$0</b>

<sup>1</sup> Source: FDOT Long-Range Estimating System. Preliminary Estimate of Total Project Cost does not include maintenance costs.

**Preliminary — Subject to Change**

# PROJECT SCHEDULE



## PROJECT CONTACT

**Patrick Bateman, P.E.**

Project Manager

FDOT District One

P.O. Box 1249, MS 1-40

Bartow, FL 33831

E-mail: [Patrick.Bateman@dot.state.fl.us](mailto:Patrick.Bateman@dot.state.fl.us)

Telephone: (863) 519-2792 or

Toll-free at 1 (800) 292-3368 Ext. 2792

## PARA INFORMACION EN ESPAÑOL

**Karina Della Sera**

FDOT District One

P.O. Box 1249, MS 1-36

Bartow, FL 33831

Correo electrónico:

[Karina.DellaSera@dot.state.fl.us](mailto:Karina.DellaSera@dot.state.fl.us)

Teléfono: (863) 519-2750

## YOU MAY SHARE YOUR COMMENTS ABOUT THE PROJECT IN SEVERAL WAYS:

### Court Reporter

Provide verbal comments to the court reporter at the in-person public hearing

### During the Formal Presentation and Comment Period at the Public Hearing

Complete an in-person speaker card and return to project staff, or type your comment request into the Questions Box in GoToWebinar to provide verbal comment during the hearing.

### At the In-Person Public Hearing

Complete a comment form and place it in the comment box at the meeting or mail to Patrick Bateman, P.E., FDOT Project Manager, 801 N. Broadway Avenue, Bartow, FL 33830

### Email Comments

Email comments to the FDOT Project Manger, Patrick Bateman, P.E., at [Patrick.Bateman@dot.state.fl.us](mailto:Patrick.Bateman@dot.state.fl.us)

### Visit the Project Website

Submit your comments through the project website [www.swflroads.com/project/444321-1](http://www.swflroads.com/project/444321-1)

For more information, scan the QR code to visit the project website.



**All comments submitted or spoken at the hearing, emailed, or postmarked by April 5, 2024 carry equal weight and will become part of the official public hearing record.**

The environmental review, consultation, and other actions required by applicable Federal environmental laws for this project are being, or have been, carried out by FDOT pursuant to 23 U.S.C. §327 and a Memorandum of Understanding dated May 26, 2022 and executed by FHWA and FDOT.

FDOT solicits public participation without regard to race, color, national origin, age, sex, religion, disability, or family status. People who require special accommodations under the Americans with Disabilities Act or who require translation services (free of charge) should contact Cynthia Sykes, District One Title VI Coordinator, at (863) 519-2287, or e-mail at [Cynthia.Sykes@dot.state.fl.us](mailto:Cynthia.Sykes@dot.state.fl.us).