

**CULTURAL RESOURCE ASSESSMENT SURVEY
TECHNICAL MEMORANDUM ADDENDUM
SR 60 GRADE SEPARATION OVER CSX RAILROAD
POLK COUNTY, FLORIDA**

Financial Project ID No.: 436559-1-52-01

Prepared for:

**Florida Department of Transportation
District One
P.O. Box 1249
Bartow, Florida 33830-1249**

October 2016

**CULTURAL RESOURCE ASSESSMENT SURVEY
TECHNICAL MEMORANDUM ADDENDUM
SR 60 GRADE SEPARATION OVER CSX RAILROAD
POLK COUNTY, FLORIDA**

Financial Project ID No.: 436559-1-52-01

Prepared for:

FLORIDA DEPARTMENT OF TRANSPORTATION
DISTRICT ONE
801 North Broadway Avenue
Bartow, Florida 33831

Prepared by:

Archaeological Consultants, Inc.
8110 Blaikie Court, Suite A
Sarasota, Florida 34240

Marion Almy – Project Manager
Lee Hutchinson – Project Archaeologist
Nelson Rodriguez – Archaeologist
Kim Irby – Architectural Historian

In association with:

Faller Davis and Associates, Inc.
5525 West Cypress Street, Suite #300
Tampa, Florida 33607

October 2016

TABLE OF CONTENTS

1. Executive Summary	1
2. Introduction	1
3. Project Description	4
4. Archaeological and Historical Background	5
5. Survey Methods.....	5
6. Results and Recommendations.....	7
7. Bibliography	8

LIST OF FIGURES

Figure 1. Location of the SR 60 project area.	2
Figure 2. Environmental setting and previously recorded sites and historic resources proximal to the SR 60 project area.	3
Figure 3. Approximate location of shovel tests within the new survey area.	6

LIST OF PHOTOS

Photo 1. Looking northwest at the outfall ditch.	4
Photo 2. Looking north at pond site.....	5

Appendix A: SHPO Concurrence Letter
Appendix B: Survey Log

**CULTURAL RESOURCE ASSESSMENT SURVEY
TECHNICAL MEMORANDUM ADDENDUM
SR 60 GRADE SEPARATION OVER CSX RAILROAD
POLK COUNTY, FLORIDA**

Financial Project ID No.: 436559-1-52-01

1. Executive Summary

Archaeological Consultants, Inc. (ACI) performed an additional cultural resource assessment survey (CRAS) within the area of potential effects (APE) for the State Road (SR) 60 Grade Separation over CSX Railroad in Polk County in October 2016 (**Figure 1**). This work was conducted for the Florida Department of Transportation (FDOT) to update the previous CRAS addendum (ACI 2016) that was prepared for this project. Previously, in 2014, a Project Development and Environment (PD&E) Study CRAS was conducted for SR 60 Grade Separation over the CSX Railroad corridor, including three pond sites (ACI 2014) and was approved by the State Historic Preservation Officer (SHPO) in December 2014 (Bendus 2014; **Appendix A**). Due to minor design changes (the addition ingress/infall and egress/outfall easements), additional archaeological testing and historic resources survey was conducted in 2015 (ACI 2016). This memo was also approved by the SHPO (Parsons 2016; **Appendix A**). Currently, another pond alternative has been added and an existing outfall ditch will be improved (**Figures 1 and 2**). The archaeological and historical APE is defined as the area contained within the two new project areas (ponds and ditch). This survey was performed to locate and identify any prehistoric and historic period archaeological sites and historic structures located within the APE to assess site significance in terms of eligibility for listing in the National Register of Historic Places (NRHP).

As a result of field work, no historic or prehistoric archaeological sites were found within the APE, nor were any historic resources discovered. Thus, no sites listed or eligible for listing in the NRHP will be affected by this project.

2. Introduction

The CRAS was initiated to comply with Section 106 of the National Historic Preservation Act of 1966, as amended by Public Law 89-665; the Archaeological and Historic Preservation Act, as amended by Public Law 93-291; Executive Order 11593; and Chapter 267, *Florida Statutes (FS)*. All work was carried out in conformity with Part 2, Chapter 12 (“Archaeological and Historical Resources”) of the FDOT’s *PD&E Manual* (January 1999 revision), and the standards contained in the *Cultural Resource Management Standards and Operational Manual* (Florida Division of Historical Resources [FDHR] 2003), as well as with the provisions contained in the revised Chapter 267, *FS*.

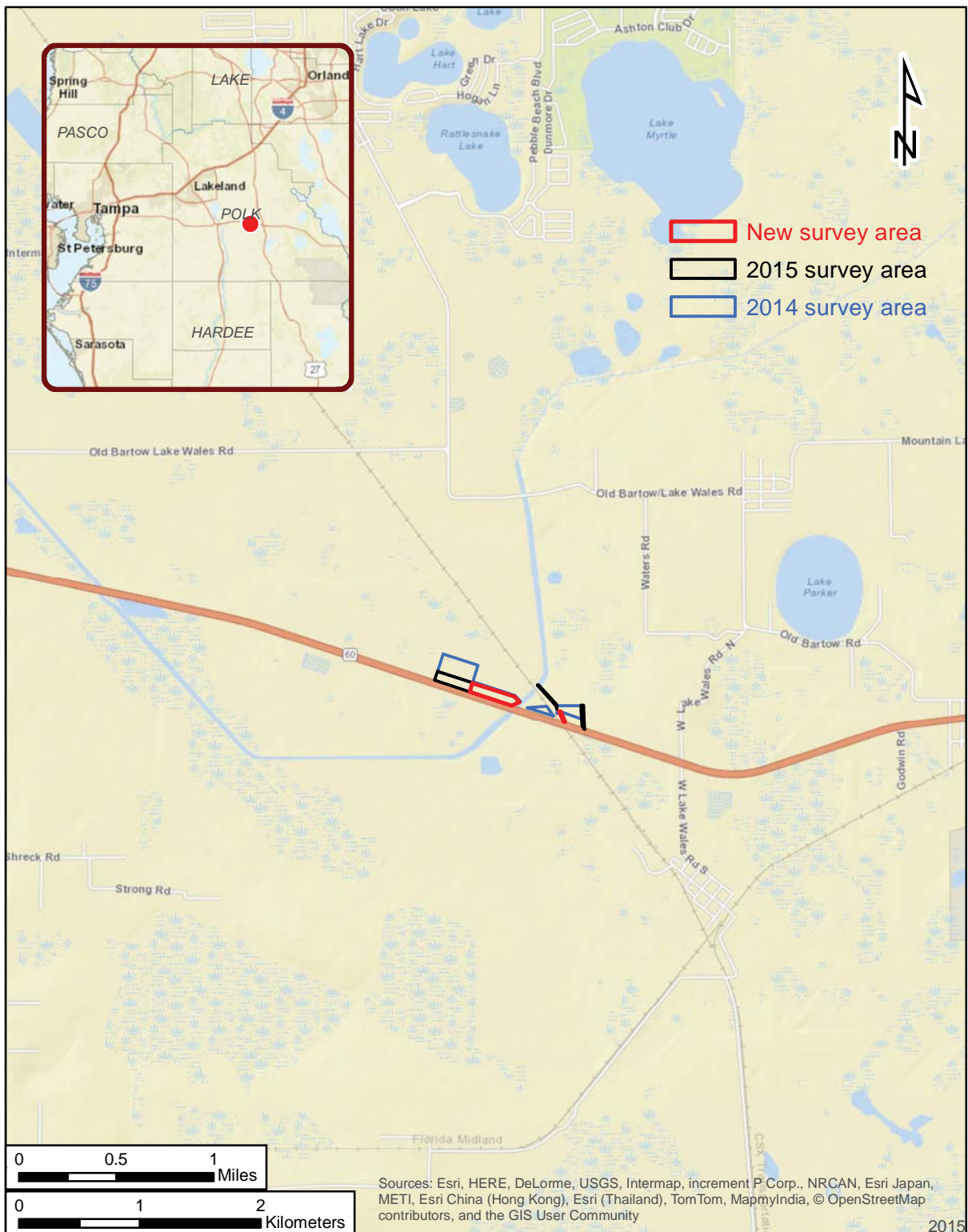


Figure 1. Location of the SR 60 project area, Polk County.

**CRAS Technical
Memorandum Addendum
SR 60 Grade Separation Over
CSX Railroad
Polk County, Florida
FPID No.: 436559-1-52-01**

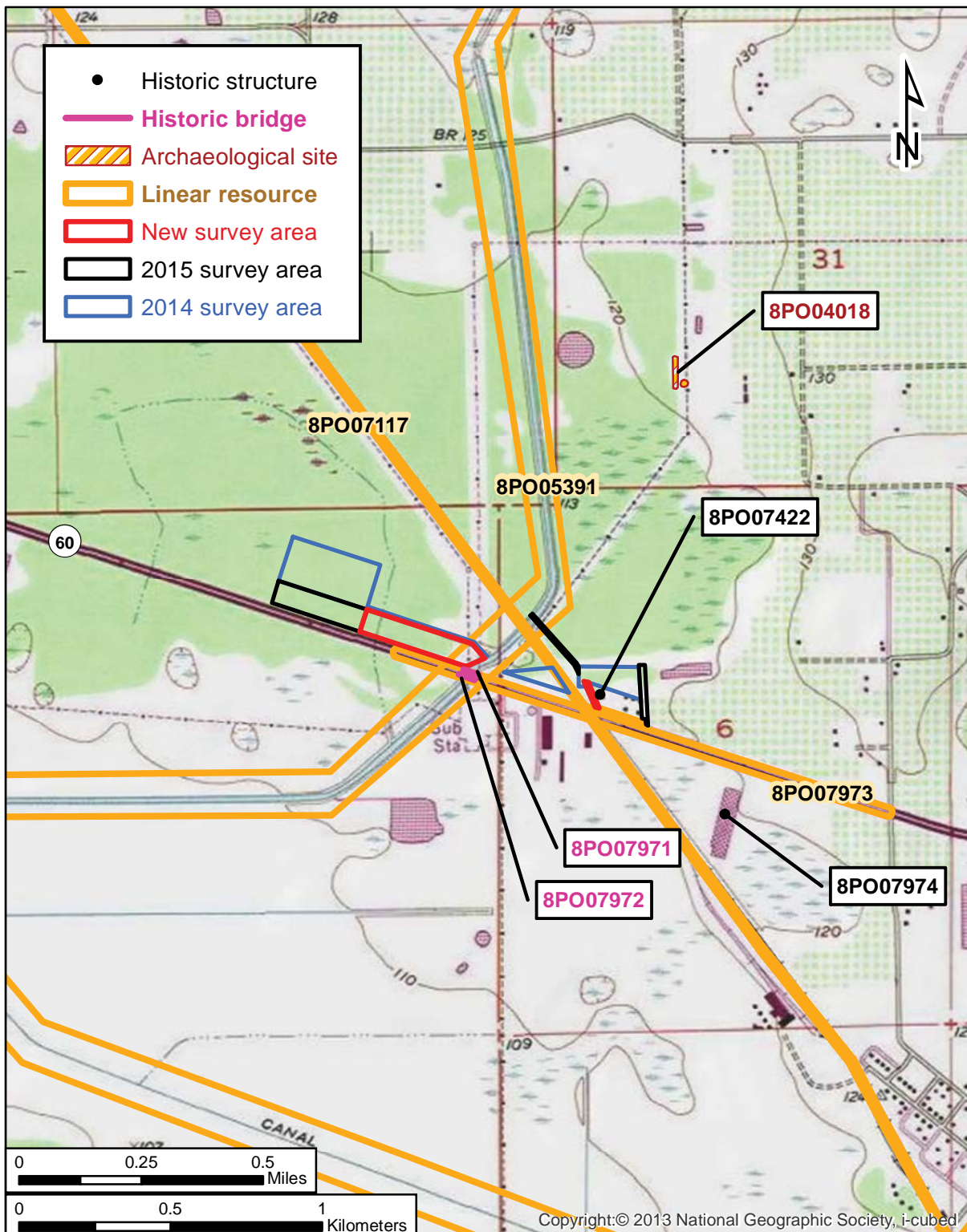


Figure 2. Environmental setting and the previously recorded sites and historic resources proximal to the SR 60 project area; USGS Eloise.

**CRAS Technical
Memorandum Addendum
SR 60 Grade Separation Over
CSX Railroad
Polk County, Florida
FPID No.: 436559-1-52-01**

Field surveys were preceded by background research. Such work served to provide an informed set of expectations concerning the kinds of cultural resources which might be anticipated to occur within the project's APE, as well as a basis for evaluating any new sites found.

3. Project Description

Since the submittal of the previous 2014 CRAS (ACI 2014) and 2016 CRAS addendum (ACI 2016), another pond alternative has been added and an existing outfall ditch will be improved (**Figures 1-3; Photos 1 and 2**). Specifically, the pond alternative is located west of the Peace River Canal and north of the SR 60 right-of-way (ROW) abutting the Duke Energy property. The ditch outfall is located east of the CSX Railroad and north of SR 60; improvements to the existing outfall ditch are required to allow FDOT maintenance access and to improve conveyance (FallerDavis 2016).



Photo 1. Looking northwest at the outfall ditch.



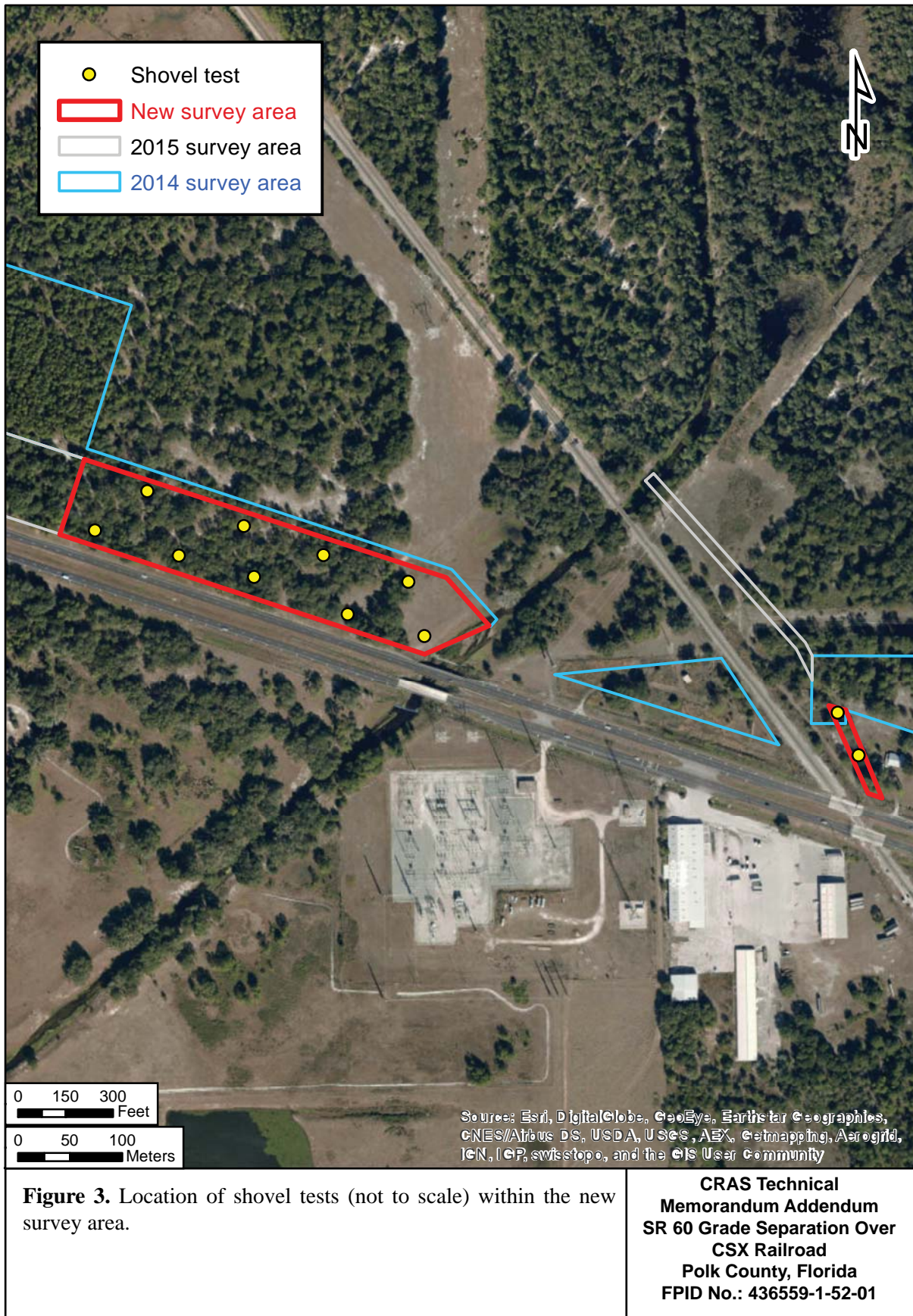
Photo 2. Looking north at pond site.

4. Archaeological and Historical Background

Prior to initiating the archaeological and historical survey, ACI reviewed the CRAS for SR 60 (ACI 2014) and the previous CRAS addendum (ACI 2016). This review indicated that no NRHP listed or determined eligible cultural resources had been identified within the project APE. A review of the FMSF database (September 2016) confirmed this.

5. Survey Methods

Archaeological: Archaeological field survey included both ground surface reconnaissance and the systematic excavation of shovel test pits. Subsurface testing was conducted systematically at 164 ft intervals (50 meters [m]) and 100 m (328 ft) intervals. All shovel tests measured 1.6 ft in diameter and most were dug to 3.3 ft in depth. All recovered soil was screened through a 0.25 inch (in) mesh hardware cloth to maximize the recovery of cultural materials, and, after soil stratigraphy was recorded, each test pit was refilled. The location of each shovel test was plotted on an aerial and shown on **Figure 3**.



Historical: The historical/architectural field survey consisted of a reconnaissance of the project APE to determine if any historic structures (those 50 years of age or older) were present.

Laboratory Procedures and Curation: In the event that cultural materials were recovered, they would be initially cleaned and sorted by artifact class and subjected to a limited technological analysis. However, no artifacts were found as a result of this survey.

All project related information will be housed at ACI, in Sarasota, pending transfer to a FDOT-designated repository for permanent storage and curation. A copy of this report and survey log will be on file at the FDHR in Tallahassee.

Unexpected Discoveries: It was planned that if human burial sites such as Indian mounds, lost historic and prehistoric cemeteries, or other unmarked burials or associated artifacts were found, the provisions and guidelines set forth in Chapter 872.05 *FS* (Florida's Unmarked Burial Law) would be followed. However, it was not anticipated that such sites would be found within the APE.

6. Results and Recommendations

Archaeological: Field survey resulted in the excavation of 11 shovel tests placed in the two additional areas surveyed (**Figure 3**). As a result of this archaeological testing, no sites were found and no additional archaeological testing is recommended. The stratigraphy of the shovel tests in the outfall ditch consisted of 0-30 cm (0-12 in) of dark grey sand and 30-100 cm (12-39 in) of light grey sand; water was encountered around 70 cm (28 in). Soils within the pond had a stratigraphy of 0-20 cm (0-8 in) of dark grey sand; 20-70 cm (8-28 in) of light grey sand; and 70-100 cm (28-39 in) of orange/brown sand with concretions noted in a few of the shovel tests.

Historical: As a result of the historical survey, no historic resources were identified within the project APE.

Conclusions: In summary, there will be no effect on any cultural resources, including archaeological sites and historic resources, which are listed, determined eligible, or potentially eligible for listing in the NRHP.

7. Bibliography

Archaeological Consultants, Inc. (ACI)

- 2014 Cultural Resource Assessment Survey SR 60 Grade Separation Over CSX Railroad PD&E Study, Polk County, Florida. ACI, Sarasota.
- 2016 Cultural Resource Assessment Survey Addendum SR 60 Grade Separation Over CSX Railroad PD&E Study, Polk County, Florida. ACI, Sarasota.

Bendus, Robert M.

- 2014 SHPO Concurrence: Cultural Resource Assessment Survey SR 60 Grade Separation Over CSX Railroad PD&E Study, Polk County, Florida. SHPO/FDHR File No. 2014-5682.

FallerDavis

- 2016 Project Description Email Correspondence, September 29.

Florida Department of Transportation (FDOT)

- 1999 *Project Development and Environmental Manual* Part 2, Chapter 12, "Archaeological and Historical Resources." FDOT, Tallahassee.
- 2014 SR 82 Project Description, Electronically Provided, December 9.

Florida Division of Historical Resources (FDHR)

- 2003 *Cultural Resource Management Standards and Operational Manual*. FDHR, Tallahassee.

Parsons, Dr. Timothy

- 2016 SHPO Concurrence: Cultural Resource Assessment Survey Addendum SR 60 Grade Separation Over CSX Railroad PD&E Study, Polk County, Florida. ACI, Sarasota. SHPO/FDHR File No. 2016-387.

United States Geological Survey (USGS)

- 1955 Eloise, Fla.

United State Department of Agriculture (USDA)

- 1990 *Soil Survey of Polk County*. USDA, Soil Conservation Services

White, Matthew

- 1970 Geomorphology of the Florida Peninsula. *Geological Bulletin* 51. Florida Department of Natural Resources, Bureau of Geology, Tallahassee.

APPENDIX A: SHPO CONCURRENCE LETTERS

**Florida Department of Transportation****RICK SCOTT**
GOVERNOR801 North Broadway Avenue
Bartow, FL 33830**ANANTH PRASAD, P.E.**
SECRETARY

December 4, 2014

Mr. Robert F. Bendus
Director
Florida Division of Historical Resources
500 South Bronough Street
Tallahassee, Florida 32399-0250

Attention: Transportation Compliance Review Program

Subject: **Cultural Resource Assessment Survey**
SR 60 Grade Separation over CSX Railroad PD&E Study
Financial Project ID: 436559-1-22-01
Polk County, Florida

RECEIVED
BUREAU OF
HISTORIC PRESERVATION
2014 DEC -5 P 2:38

Dear Mr. Bendus:

The Florida Department of Transportation (FDOT) is conducting a state funded Project Development and Environment (PD&E) Study to evaluate costs and impacts of constructing a new overpass to carry SR 60 over the CSX Railroad (milepost 25.544, crossing #625419N) approximately 11 miles east of Bartow and 4 miles west of Lake Wales in Polk County, Florida. The PD&E Study limits are SR 60 from 3200 feet west of CSX Railroad crossing #625419N to 2500 feet east of CSX Railroad crossing #625419N, a distance of 5700 feet (1.08 mile). In addition to the proposed bridges over the CSX railroad, bridges will be provided over the Peace Creek drainage canal which is west of the railroad.

Enclosed are the following documents for your review and approval:

- One unbound Cultural Resource Assessment Survey (CRAS) (dated November 2014)
- Six Florida Master Site File (FMSF) forms (8PO5391, 8PO7117, 8PO7971 - 8PO7974)
- One original Survey Log Sheet
- One CD containing pdf files of the CRAS Report, FMSF forms and photos

The CRAS was prepared in accordance with Section 106 of the National Historic Preservation Act, and Chapter 267, Florida Statutes. Although this is a state funded project, a US Army Corps of Engineers permit could be required for the Peace Creek drainage canal. All historic and archaeological resources that may be affected by the proposed project, within the Area of Potential Effect (APE), as defined below, were identified and their significance was assessed in terms of eligibility for listing in the National Register of Historic Places (NRHP).

Background research and a review of the FMSF and the NRHP indicated that one archaeological site had been recorded within one mile of the project corridor, but none is contained within the archaeological APE, which is defined as the SR 60 right-of-way (ROW) and the three proposed ponds. The site location

21332

Mr. Robert Bendus, FDHR
SR 60 Grade Separation over CSX Railroad PD&E Study
Financial Project ID No.: 436559-1-22-01
December 4, 2014
Page 3 of 3

The Florida State Historic Preservation Officer (SHPO)/Division of Historical Resources (DHR) finds the attached Cultural Resources Assessment Survey complete and sufficient and ☒ concurs/ ☐ does not concur with the recommendations and findings provided in this cover letter for SHPO/DHR Project File Number 2014-5682. Or, the SHPO/DHR finds the attached Cultural Resource Assessment Survey contains ☐ insufficient information.

SHPO/DHR Comments:


Robert F. Bendus, Director
Division of Historical Resources
and State Historic Preservation Officer

12/29/14
Date



Florida Department of Transportation

RICK SCOTT
GOVERNOR

801 North Broadway Avenue
Bartow, FL 33830

RECEIVED
BUREAU OF
HISTORIC PRESERVATION
2016 JAN 28 P 12:48
JIM BOXOLD
SECRETARY

January 26, 2016

Dr. Timothy Parsons, Interim Director
Florida Division of Historical Resources
Department of State, R.A. Gray Building
500 South Bronough Street
Tallahassee, FL 32399-0250

**RE: Cultural Resource Assessment Survey
Technical Memorandum Addendum
SR 60 Grade Separation over CSX Railroad,
Polk County, Florida
Financial Project ID No.: 436559-1-32-01
Florida Division of Historical Resources (FDHR) File No. 2014-5682**

Dear Dr. Parsons:

A cultural resource assessment survey (CRAS) was performed within the area of potential effects (APE) for three additional areas related to the State Road (SR) 60 Grade Separation over CSX Railroad project in Polk County in June 2015. This work was conducted for the Florida Department of Transportation (FDOT) as part of their proposed state funded improvements to SR 60 and to update the previous CRAS that was prepared for this project. In 2014, a Project Development and Environment (PD&E) Study CRAS was conducted for SR 60 Grade Separation over the CSX Railroad corridor, including three pond sites. The 2014 CRAS report was approved by your office on December 29, 2014 (FDHR File No. 2014-5682). Since the submittal of the previous 2014 CRAS, minor design changes have occurred and additional archaeological testing and historic resources survey was required. Pond site locations have not changed; however, ingress/infall and egress/outfall easements were added for the pond sites.

The project study limits are SR 60 from 3600 feet (ft) west of CSX Railroad crossing #625419N to 2700 ft east of CSX Railroad crossing #625419N, a distance of 6300 ft (1.19 mile [mi]); however, the additional CRAS survey areas covered in the addendum are related to the pond sites ingress/infall and egress/outfall easements that have been added. The storm water management will be accomplished utilizing the existing FDOT owned borrow pit sites that are in the northwest and northeast quadrants of SR 60 and the CSX railroad.

For the purpose of the archaeological and historical survey, the APE was identified as the area contained within these three new project areas.

Enclosed you will find the CRAS Technical Memorandum Addendum. The following documents are attached:

Dr. Timothy Parsons, Interim Director
SR 60 Grade Separation over CSX Railroad,
Polk County, Florida
FPID No.: 436559-1-32-01
January 26, 2016
Page 2 of 3

- One original copy of the CRAS (January 2016)
- One Completed Survey Log

The field work was conducted in accordance with the FDOT's PD&E Manual and the research plan and field methodology follow the standards and guidelines of the Florida Division of Historical Resources as described in *The Historic Preservation Compliance Review Program of the Florida Department of State, Division of Historical Resources: A Guide to the Preservation Provisions of State and Federal Environmental Review Laws*.

Background research and a review of the FMSF indicated that no archaeological sites are recorded within or adjacent to the project APE. A review of relevant site location information for environmentally similar areas within Polk County and the surrounding region indicated a low probability for the occurrence of sites within the APE. As a result of field survey, no archaeological sites were discovered.

Background research and a review of the Florida Master Site File (FMSF) and the NRHP indicated that there are no previously recorded structures or buildings 50 years or older within the APE. No historic structures were identified during the historic resources survey.

I am requesting your concurrence with our evaluation that the **SR 60 Grade Separation over CSX Railroad** will have no effect on any resources listed or considered eligible for listing in the *NRHP*.

This information is being provided in accordance with the provisions of the National Historic Preservation Act of 1966 (as amended), which are implemented by the procedures contained in 36 CFR, Part 800, as well as the provisions contained in the revised Chapter 267, *Florida Statutes*.

If you have any questions, or if I may be of assistance, please contact me at (863) 519-2805 or Vivianne.Cross@dot.state.fl.us.

Sincerely,



Vivianne Cross
Environmental Project Manager

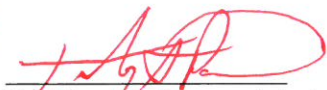
Enclosures

CC: Gwen Pipkin, FDOT
Amy Setchell, FDOT
Ken Muzyk, Faller Davis
Kim Warren, Atkins
Marion Almy, ACI

Dr. Timothy Parsons, Interim Director
SR 60 Grade Separation over CSX Railroad,
Polk County, Florida
FPID No.: 436559-1-32-01
January 26, 2016
Page 3 of 3

The Florida State Historic Preservation Officer (SHPO)/Florida Division of Historical Resources (FDHR) finds the attached Cultural Resources Assessment Survey Technical Memorandum Addendum complete and sufficient and ✓ concurs/ does not concur with the recommendations and findings provided in this cover letter for SHPO/DHR Project File Number 2016-387. Or, the SHPO/FDHR finds the attached Cultural Resource Assessment Survey Technical Memorandum Addendum contains insufficient information.

SHPO/FDHR Comments:



Dr. Timothy Parsons, Interim Director
Florida Division of Historical Resources
and State Historic Preservation Officer

2/18/16
Date

APPENDIX B: SURVEY LOG

Ent D (FMSF only) _____



Survey Log Sheet

Florida Master Site File
Version 4.1 1/07

Survey # (FMSF only) _____

Consult *Guide to the Survey Log Sheet* for detailed instructions.

Identification and Bibliographic Information

Survey Project (name and project phase) CRAS SR 60 Grade Separation over CSX Railroad, Phase I

Report Title (exactly as on title page) Cultural Resource Assessment Survey Technical Memorandum Addendum SR 60 Grade Separation Over CSX Railroad, Polk County, Florida. FPID No. 436559-1-52-01

Report Authors (as on title page, last names first) 1. ACI 3. _____
2. _____ 4. _____

Publication Date (year) 2016 Total Number of Pages in Report (count text, figures, tables, not site forms) 14

Publication Information (Give series, number in series, publisher and city. For article or chapter, cite page numbers. Use the style of *American Antiquity*.)
P15062 Conducted for FDOT, District 1, Bartow, by ACI, Sarasota

Supervisors of Fieldwork (even if same as author) Names Almy, Marion

Affiliation of Fieldworkers: Organization Archaeological Consultants Inc City Sarasota

Key Words/Phrases (Don't use county name, or common words like *archaeology, structure, survey, architecture, etc.*)

1. Railroad 3. _____ 5. _____ 7. _____
2. Ponds 4. _____ 6. _____ 8. _____

Survey Sponsors (corporation, government unit, organization or person directly funding fieldwork)

Name Faller Davis Organization _____

Address/Phone/E-mail 5525 West Cypress Street, Suite #300 Tampa, Florida 33607

Recorder of Log Sheet Lee Hutchinson Date Log Sheet Completed 10-10-2016

Is this survey or project a continuation of a previous project? ☒ No ☐ Yes: Previous survey #s (FMSF only) _____

Mapping

Counties (List each one in which field survey was done; attach additional sheet if necessary)

1. Polk 3. _____ 5. _____
2. _____ 4. _____ 6. _____

USGS 1:24,000 Map Names/Year of Latest Revision (attach additional sheet if necessary)

1. Name ELOISE Year 1955 4. Name _____ Year _____
2. Name _____ Year _____ 5. Name _____ Year _____
3. Name _____ Year _____ 6. Name _____ Year _____

Description of Survey Area

Dates for Fieldwork: Start 10-8-2016 End 10-8-2016 Total Area Surveyed (fill in one) _____ hectares 7.00 acres

Number of Distinct Tracts or Areas Surveyed 2

If Corridor (fill in one for each) Width: _____ meters _____ feet Length: _____ kilometers _____ miles

Research and Field Methods

Types of Survey (check all that apply): ☒archaeological ☒architectural ☒historical/archival ☐underwater
☐damage assessment ☐monitoring report ☐other(describe): _____

Scope/Intensity/Procedures background research, systematic subsurface testing (all negative), 1 m deep,
50 cm diameter, 6.4 mm mesh screen; photos taken, tech memo prepared

Preliminary Methods (check as many as apply to the project as a whole)

☐Florida Archives (Gray Building) ☒library research- *local public* ☒local property or tax records ☒other historic maps
☐Florida Photo Archives (Gray Building) ☐library-special collection - *nonlocal* ☐newspaper files ☒soils maps or data
☒Site File property search ☒Public Lands Survey (maps at DEP) ☒literature search ☒windshield survey
☒Site File survey search ☐local informant(s) ☐Sanborn Insurance maps ☒aerial photography
☐other (describe): _____

Archaeological Methods (check as many as apply to the project as a whole)

☐Check here if **NO** archaeological methods were used.
☐surface collection, controlled ☐shovel test-other screen size ☐block excavation (at least 2x2 m)
☐surface collection, uncontrolled ☐water screen ☐soil resistivity
☒shovel test-1/4" screen ☐posthole tests ☐magnetometer
☐shovel test-1/8" screen ☐auger tests ☐side scan sonar
☐shovel test 1/16" screen ☐coring ☒pedestrian survey
☐shovel test-unscreened ☐test excavation (at least 1x2 m) ☐unknown
☐other (describe): _____

Historical/Architectural Methods (check as many as apply to the project as a whole)

☐Check here if **NO** historical/architectural methods were used.
☐building permits ☐demolition permits ☐neighbor interview ☐subdivision maps
☐commercial permits ☒exposed ground inspected ☐occupant interview ☐tax records
☐interior documentation ☒local property records ☐occupation permits ☐unknown
☐other (describe): _____

Survey Results (cultural resources recorded)

Site Significance Evaluated? ☒Yes ☐No

Count of Previously Recorded Sites 0 Count of Newly Recorded Sites 0

Previously Recorded Site #'s with Site File Update Forms (List site #'s without "8". Attach additional pages if necessary.) _____

Newly Recorded Site #'s (Are all originals and not updates? List site #'s without "8". Attach additional pages if necessary.) _____

Site Forms Used: ☐Site File Paper Form ☒Site File Electronic Recording Form

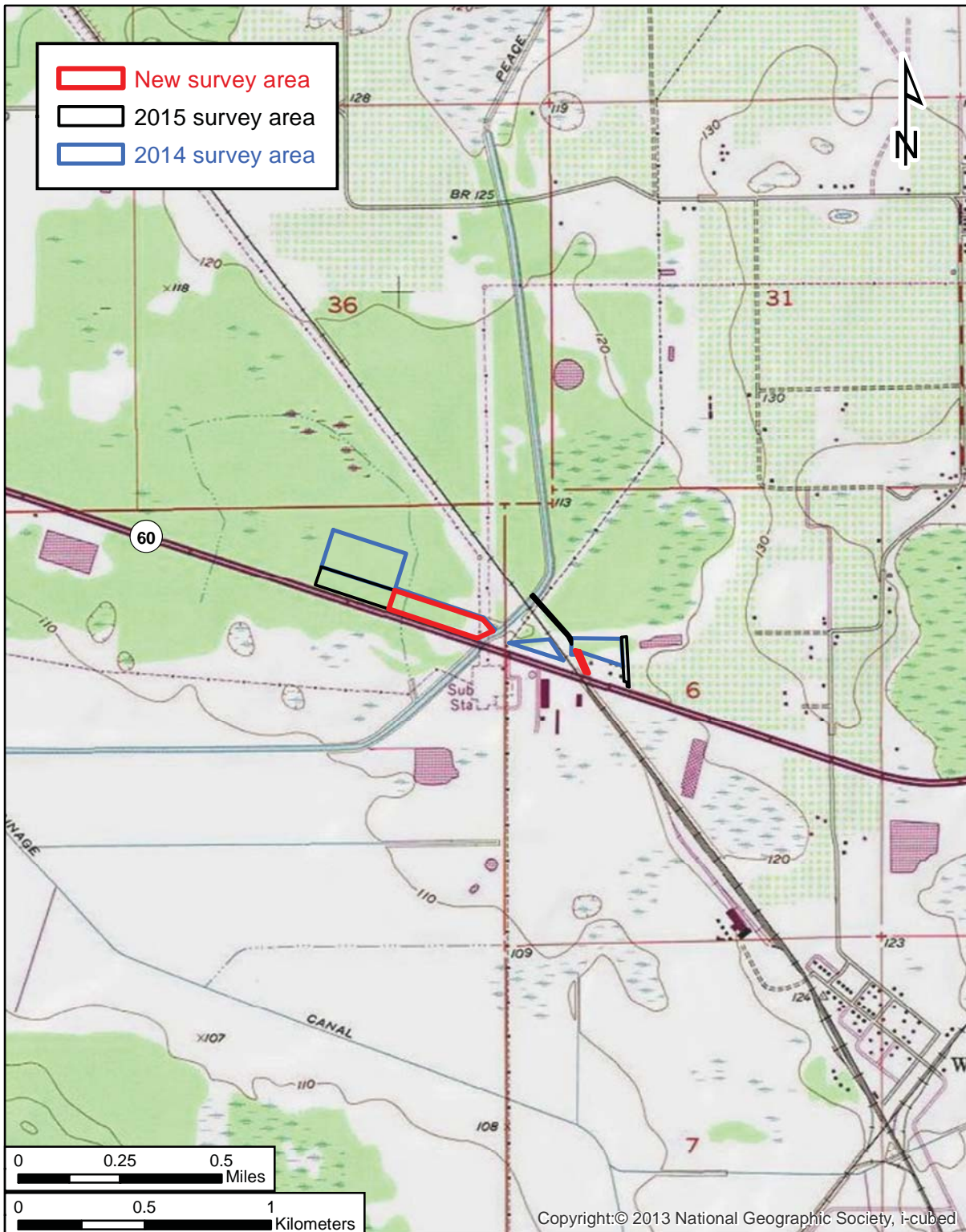
*****REQUIRED: ATTACH PLOT OF SURVEY AREA ON PHOTOCOPY OF USGS 1:24,000 MAP(S)*****

SHPO USE ONLY

SHPO USE ONLY

SHPO USE ONLY

Origin of Report: ☐872 ☐CARL ☐UW ☐1A32 # _____ ☐Academic ☐Contract ☐Avocational
☐Grant Project # _____ ☐Compliance Review: CRAT # _____
Type of Document: ☐Archaeological Survey ☐Historical/Architectural Survey ☐Marine Survey ☐Cell Tower CRAS ☐Monitoring Report
☐Overview ☐Excavation Report ☐Multi-Site Excavation Report ☐Structure Detailed Report ☐Library, Hist. or Archival Doc
☐MPS ☐MRA ☐TG ☐Other: _____
Document Destination: _____ Plotability: _____



SR 60 Over CSX Railroad

Section 1 of Township 30 South, Range 26 East and Section 6 of
Township 30 South, Range 27 East

USGS Eloise
Polk County

**CRAS Technical
Memorandum Addendum
SR 60 Grade Separation Over
CSX Railroad
Polk County, Florida
FPID No.: 436559-1-52-01**