

**WORK PROGRAM PROJECTS: CONSTRUCTION, PLANNING/PD&E STUDIES, DESIGN, MULTI-MODAL**

*\*Project totals are Fiscal Years 2026-2030 only, prior fiscal year(s) funding not included.*

FPID	DESCRIPTION	PHASE	TYPE	TOTAL	FISCAL YEAR
448747-1	120TH ST FROM NE 115TH TERACE TO NE 128TH AVE	Construction	WIDEN/RESURFACE EXIST LANES	\$ 2,260,764	2026
450325-1	144TH ST FROM US 441 TO 56TH AVE	Construction	RESURFACING	\$ 5,026,253	2027
448767-1	ARBUCKLE CREEK RD BRIDGE MAINTENANCE	Construction	ROAD RECONSTRUCTION - 2 LANE	\$ 737,263	2026
450324-1	ARBUCKLE CREEK RD FROM BISHOP DAIRY RD TO US 98	Construction	RESURFACING	\$ 1,195,378	2030
448766-1	ARBUCKLE CREEK RD FROM MLK BLVD TO RIVERDALE RD	Construction	RESURFACING	\$ 1,759,146	2030
449647-1	CATFISH CREEK RD FROM TUOMEY CT TO CATFISH CREEK RD BRIDGE	Construction	SIDEWALK	\$ 816,879	2029
		Design	SIDEWALK	\$ 151,001	2027
448421-1	CATFISH CREEK RD FROM TUOMEY CT TO WEST INTERLAKE BLVD	Construction	SIDEWALK	\$ 1,178,656	2028
		Design	SIDEWALK	\$ 121,000	2026
448422-1	CEMETERY RD FROM MLK JR BLVD TO SCHOOL ST	Construction	SIDEWALK	\$ 358,460	2028
		Design	SIDEWALK	\$ 76,000	2026
413985-1	CITY OF MOORE HAVEN TSMCA	Operations	TRAFFIC CONTROL DEVICES/SYSTEM	\$ 55,005	2026
413643-1	CITY OF OKEECHOBEE TSMCA	Operations	TRAFFIC CONTROL DEVICES/SYSTEM	\$ 134,263	2026
413630-1	CITY OF WAUCHULA TSMCA	Operations	TRAFFIC CONTROL DEVICES/SYSTEM	\$ 246,819	2026
450322-1	CR 29 FROM E OF US 27 TO CR 619	Construction	RESURFACING	\$ 2,330,311	2026
450321-1	CR 664 FROM DOC COIL RD TO CR 663	Construction	RESURFACING	\$ 4,659,585	2026
450323-1	CR 731 FROM CLUBHOUSE RD TO BAPTIST CHURCH	Construction	RESURFACING	\$ 1,904,152	2026
448423-1	DESOTO RD FROM PHIL LANE TO DESOTO CITY RD	Construction	SIDEWALK	\$ 305,717	2028
		Design	SIDEWALK	\$ 66,000	2026
412668-1	GLADES COUNTY TSMCA	Operations	TRAFFIC CONTROL DEVICES/SYSTEM	\$ 51,026	2026
450320-1	GOOSE POND RD FROM POST PLANT RD TO CR 663	Construction	RESURFACING	\$ 3,696,945	2029
412669-1	HARDEE COUNTY TSMCA	Operations	TRAFFIC CONTROL DEVICES/SYSTEM	\$ 33,008	2026
412671-1	HIGHLANDS COUNTY TSMCA	Operations	TRAFFIC CONTROL DEVICES/SYSTEM	\$ 470,236	2026
449550-1	HOME AVE FROM SEBRING PKWY TO SAGE CREST DR	Construction	SIDEWALK	\$ 239,602	2029
		Design	SIDEWALK	\$ 81,000	2027
452176-1	MLK JR AVE FROM SNELL ST TO CARLTON ST	Construction	SIDEWALK	\$ 850,596	2030
		Design	SIDEWALK	\$ 334,000	2028
453433-1	NE 120TH ST (DARK HAMMOCK RD)	Construction	RESURFACING	\$ 6,366,960	2029
448763-1	NE 56TH AVE FROM NE 120TH ST TO NE 144TH AVE	Construction	ROAD RECONSTRUCTION - 2 LANE	\$ 3,000,154	2027
412674-1	OKEECHOBEE COUNTY TSMCA	Operations	TRAFFIC CONTROL DEVICES/SYSTEM	\$ 232,693	2026
449672-1	S SUN 'N LAKES BLVD FROM US 27 TO MOON GLOW AVE	Construction	SIDEWALK	\$ 225,532	2029
		Design	SIDEWALK	\$ 26,000	2027
449579-1	SCENIC HIGHWAY PHASE I FROM SEBRING PKWY TO SUMMIT RD	Construction	BIKE PATH/TRAIL	\$ 481,081	2029
		Design	BIKE PATH/TRAIL	\$ 121,000	2027
449579-2	SCENIC HIGHWAY PHASE II FROM SUMMIT RD TO PANTHER PKWY	Construction	BIKE PATH/TRAIL	\$ 434,192	2029
		Design	BIKE PATH/TRAIL	\$ 121,000	2027
449582-1	SCENIC HIGHWAY SIDEWALK FROM LAKEVIEW DR TO SEBRING PKWY	Construction	SIDEWALK	\$ 220,339	2029
		Design	SIDEWALK	\$ 31,000	2027
448424-1	SCHOOL ST FROM EO DOUGLAS AVE TO CEMETERY RD	Construction	SIDEWALK	\$ 394,460	2028
		Design	SIDEWALK	\$ 66,000	2026
449676-1	SEBRING PKWY PHASE IV FROM SEBRING ROUNDABOUT TO ARBUCKLE CREEK RD	Construction	NEW ROAD CONSTRUCTION	\$ 4,772,893	2026
449674-1	SR 17 FROM HOME AVE TO ARBUCKLE CREEK RD	Construction	SIDEWALK	\$ 655,967	2029
		Design	SIDEWALK	\$ 564,000	2027
451262-1	SR 17 FROM S OF CR 17 (KENILWORTH BLVD) TO E OF SR 25 (US 98 / US 27)	Construction	RESURFACING	\$ 10,727,041	2026
449177-1	SR 17 FROM SOUTH OF LAKE VERONA BLVD TO SOUTH DELANEY AVE	Construction	DRAINAGE IMPROVEMENTS	\$ 1,244,530	2026
451270-1	SR 25 (US 27) FROM N OF PONCE DE LEON BLVD TO N OF LAKE ISIS AVE	Construction	PAVEMENT ONLY RESURFACE (FLEX)	\$ 10,665,097	2027
448928-1	SR 25 (US 27) FROM S OF WAYMAN RD TO N OF FISH EATING CREEK	Construction	RESURFACING	\$ 27,251,826	2027
439750-2	SR 25 (US 27) FROM SOUTH OF SR 66 TO NORTH OF SR 66	Construction	RIGID PAVEMENT RECONSTRUCTION	\$ 21,057,543	2027
451267-1	SR 29 FROM HENDRY COUNTY LINE TO N OF SR 78	Construction	PAVEMENT ONLY RESURFACE (FLEX)	\$ 4,253,494	2028
449149-1	SR 29 FROM SR 78 TO CR 74	Construction	NEW BRIDGE CONSTRUCTION	\$ 44,278,622	2029
453400-1	SR 35 (US 17) AT CHARLIE CREEK FROM BROOKSIDE BLUFF TO N OF BRONCO DR	Construction	DRAINAGE IMPROVEMENTS	\$ 17,549,180	2028
		Right of Way	DRAINAGE IMPROVEMENTS	\$ 265,000	2026
446205-1	SR 35 (US 17) FROM N OF SR 64 TO BELL ST	Construction	RESURFACING	\$ 22,250,855	2027
446204-1	SR 35 (US 17) FROM S OF HEARTLAND WAY TO N OF HILTON RD	Construction	PAVEMENT ONLY RESURFACE (FLEX)	\$ 16,303,079	2027
444949-1	SR 636 (E MAIN ST) FROM FIRST AVE TO GRIFFIN RD	Construction	SIDEWALK	\$ 811,320	2028
444952-1	SR 636 (E MAIN ST) FROM GRIFFIN RD TO RIVERSIDE DR	Construction	SIDEWALK	\$ 1,477,882	2028
		Railroad & Utilities	SIDEWALK	\$ 50,000	2028
		Right of Way	SIDEWALK	\$ 132,445	2026
443122-1	SR 66 FROM HARDEE COUNTY LINE TO SPRING VALLEY LANE	Design	NEW BRIDGE CONSTRUCTION	\$ 2,200,000	2026
414506-4	SR 70 FROM US 27 TO CR 29	Design	ADD LANES & RECONSTRUCT	\$ 4,186,000	2028
448971-1	SR 70/700 (US 98) FROM W OF US 98 TO E OF NW 5TH AVE	Construction	PAVEMENT ONLY RESURFACE (FLEX)	\$ 2,435,419	2026
451108-1	SR 700 (US 98) FROM BRIDGE #090016 TO BRIDGE #910090	Construction	RESURFACING	\$ 5,601,972	2027
414511-3	SR 700 (US 98) FROM E OF SR 25 (US 27) TO E OF FLORAL DR	Construction	PAVEMENT ONLY RESURFACE (FLEX)	\$ 5,978,445	2027
445408-2	SR 700 (US 98) OVER KISSIMMEE RIVER BRIDGE REPLACEMENT BR # 090016	Construction	BRIDGE REPLACEMENT	\$ 18,871,774	2027
		Railroad & Utilities	BRIDGE REPLACEMENT	\$ 550,000	2027
451107-1	SR 710 FROM N OF SE 48TH ST TO SW MARTIN HIGHWAY	Construction	PAVEMENT ONLY RESURFACE (FLEX)	\$ 6,914,601	2026
451106-1	SR 710 FROM SR 70 TO N. OF INTERCEPTOR CREEK BRIDGE #910065	Construction	PAVEMENT ONLY RESURFACE (FLEX)	\$ 1,830,943	2027
419344-3	SR 710 FROM US 441 TO L-63 CANAL	Construction	NEW ROAD CONSTRUCTION	\$ 108,362,384	2029
		Right of Way	NEW ROAD CONSTRUCTION	\$ 5,969,475	2026
452621-1	SR25(US27) FROM N OF SANTA MARIA WAY TO N OF PONCE DE LEON	Construction	PAVEMENT ONLY RESURFACE (FLEX)	\$ 11,248,108	2027
453333-2	SR-710 FROM MARTIN/OKEECHOBEE CO LINE TO FPL POWER PLANT ACCESS ROAD	Design	ADD LANES & RECONSTRUCT	\$ 4,250,000	2026
		Railroad & Utilities	ADD LANES & RECONSTRUCT	\$ 20,000,000	2029
		Right of Way	ADD LANES & RECONSTRUCT	\$ 23,227,000	2027
451362-1	US 27 AT SEBRING PKWY	Construction	INTERSECTION IMPROVEMENT	\$ 1,837,379	2027
451361-1	US 27 AT SR 17 / SR 64	Construction	INTERSECTION IMPROVEMENT	\$ 759,869	2026
444639-1	US 98 AT NW 9TH STREET	Construction	ADD RIGHT TURN LANE(S)	\$ 603,541	2029
		Design	ADD RIGHT TURN LANE(S)	\$ 216,000	2027
441923-1	W INTERLAKE BLVD FROM CATFISH CREEK ROAD TO S TANGERINE DRIVE	Construction	SIDEWALK	\$ 413,974	2026
449544-1	W STRYKER RD PHASE I FROM MORNINGSIDE RD TO US 27	Construction	SIDEWALK	\$ 728,029	2029
		Design	SIDEWALK	\$ 121,000	2027
449544-2	W STRYKER RD PHASE II FROM HARTMAN RD TO MORNINGSIDE RD	Construction	SIDEWALK	\$ 833,586	2028
		Design	SIDEWALK	\$ 161,000	2027

**DISTRICT ONE LEGISLATIVE CONTACTS**

(Jamie) James M. Driggers, JR., P.E. District One Interim Secretary  
 James.DriggersJR@dot.state.fl.us  
 Office: (386) 758-3722  
 Cell: (386) 628-1943

Wayne Gaither Southwest Area Office Director  
 Wayne.Gaither@dot.state.fl.us  
 Office: (239) 225-1971  
 Cell: (863) 280-0251

Rachel Durrance Government Affairs Specialist  
 Rachel.Durrance@dot.state.fl.us  
 Office: (863) 519-2445  
 Cell: (863) 272-2368



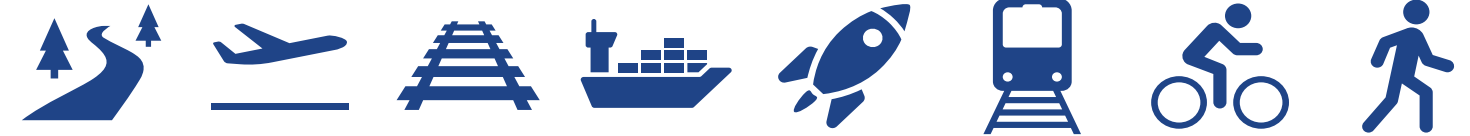
**JOIN US ON THE WEB**

www.SWFLroads.com | @MyFDOTSWFL | facebook.com/MyFDOTSWFL  
 FDOT Solicits public participation without regard to race, color, national origin, age, sex, religion, disability, or family status.



**FDOT District One  
 Work Program FY 2026-2030 Florida  
 Representative Tuck  
 83rd House District of Florida**

February 2025



**About FDOT District One**

The Florida Department of Transportation (FDOT) is an executive agency and directly reports to Governor Ron DeSantis. FDOT is committed to building a transportation system that not only fits the current needs of Florida's residents and visitors but also enhances mobility throughout the state to accommodate its consistent and rapid growth.

**District One Fast Facts**

- 12 Counties totaling nearly 12,000 square miles
- 26 Aviation Facilities - 3 International Airports
- 3.2 Million residents in 48 cities
- 1 Deep-water Seaport
- 6 Metropolitan/Transportation Planning Organizations
- 5 Railroad companies
- 42 Million miles traveled daily on state highways
- 215 Miles of Trails

**FDOT Compass**

FDOT is guided by six focus areas that navigate Florida's transportation system and offer a sustainable future for our state. Our work embraces these focus areas as we understand that they are all interconnected and allow us to advance projects that improve safety, embrace new technologies, and offer greater resiliency. We work with our communities on implementing tailored solutions and developing a robust workforce and supply chain.

**SAFETY**  
 We are committed to reaching zero fatalities and serious injuries on our roadways.

**COMMUNITIES**  
 Building relationships to achieve community vision and meet transportation needs.

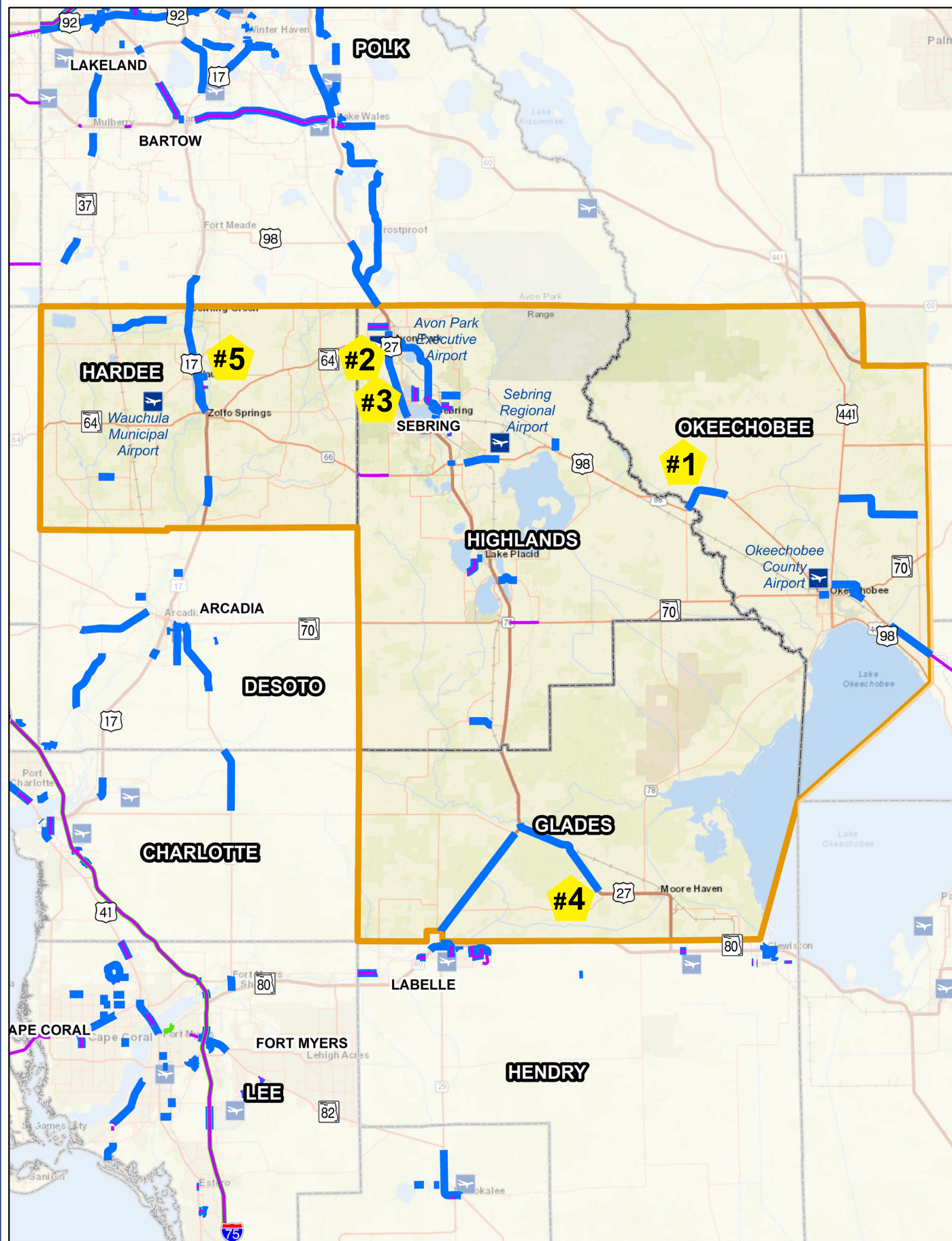
**RESILIENCY**  
 Dedicated proactive efforts to ensure transportation, communities, and the environment work in harmony.

**ROBUST SUPPLY CHAIN**  
 Strategic investments across all network modes.

**TECHNOLOGY**  
 Focused on investing and attracting technology that enhances safety and quality of life.

**WORKFORCE DEVELOPMENT**  
 Develop career path and progression for all internal and external occupations.





## DISTRICT ONE PROJECTS OF INTEREST

### PD&E STUDIES, DESIGN, and CONSTRUCTION

- Benefit and transform our communities by providing essential safety improvements for motorists, pedestrians, and cyclists to achieve Vision Zero
- Add capacity and traffic flow strategies to mitigate congestion for our travelers
- Design innovative intersections and roadways to modernize our roads; and, enhancing safety, mobility, and connectivity with new trails, bike lanes, and sidewalks.

#### #1: SR 700 (US 98) OVER KISSIMMEE RIVER BRIDGE REPLACEMENT

- FPID: 445408-2
- Construction - Bridge Replacement
- FY 2027
- Total Cost: \$9,421,774

#### #2: US 27 AT SR 17 / SR 64

- FPID: 451361-1
- Construction – Intersection improvements to include pavement markings, Dilemma Zone Detections, and update the basic controller parameters.
- FY 2026
- Total Cost: \$759,869

#### #3: US 27 AT SEBRING PKWY

- FPID: 451362-1
- Construction - Improved crosswalks, update signage, signal updates, improved pavement markings, and raised median, and lighting. These will provide adequate turning radii and reduce pedestrian exposure to conflict.
- FY 2027
- Total Cost: \$1,837,379

### RESURFACING PROJECTS

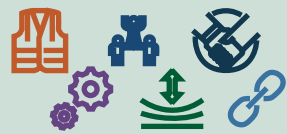
- Preserve, maintain, and enhance our system by extending the roadways' lifetime
- Provide a smooth ride to reduce wear and tear on our vehicles
- Install safety measures which may include wider bike lanes, pedestrian crossing devices, and modified medians to protect our fellow roadway users
- Upgrade traffic signals with modern, smart equipment.

#### #4: SR 25 (US 27) FROM WAYMAN RD TO FISH EATING CREEK

- FPID: 448928-1
- Construction - Resurfacing
- FY 2027
- Total Cost: \$27,251,826

#### #5: SR 35 (US 17) FROM N OF SR 64 TO S OF BELL ST

- FPID: 446205-2
- Construction - Resurfacing
- FY 2027
- Total Cost: \$22,250,855



### Legend

- Construction Projects
- Planning/PD&E Projects
- Preliminary Engineering/Design Projects



Safety



Technology



Workforce Development



Resiliency



Communities



Supply Chain

### FDOT Compass Categories