

# District One Safety

*Safety is Everyone's Responsibility*

- Our goal is to incorporate a safety mindset from the start in all projects.
- Look at ALL options and opportunities to reduce fatal and severe crashes in our District.
- Develop partnerships with staff, local agencies, officials, and all stakeholders
- Use the Safe System Approach for educating and protecting all road users

**Safe System Approach + Vision Zero + Target Zero**



The **Safe System Approach** has been adopted by the U. S. Department of Transportation as the guiding paradigm to address roadway safety.

## Principles of a Safe System Approach

On the circumference is a band with six safe system principles:

- Death and serious injuries are unacceptable
- Humans make mistakes
- Humans are vulnerable
- Responsibility is shared
- Safety is proactive
- Redundancy is crucial.

Inside the circle is divided into five sections with logos representing each section:

- Safer vehicles
- Safer speeds
- Safer roads
- Post-crash care
- Safer people.

## Objectives of a Safe System Approach

There are five complimentary objectives corresponding to the Safe System Approach:

### Safer People

Encourage safe, responsible driving and behavior by people who use our roads and create conditions that prioritize their ability to reach their destination unharmed.

### Safer Roads

Design roadway environments to mitigate human mistakes and account for injury tolerances, to encourage safer behaviors, and to facilitate safe travel by the most vulnerable users.

### Safer Vehicles

Expand the availability of vehicle systems and features that help to prevent crashes and minimize the impact of crashes on both occupants and non-occupants.

### Safer Speeds

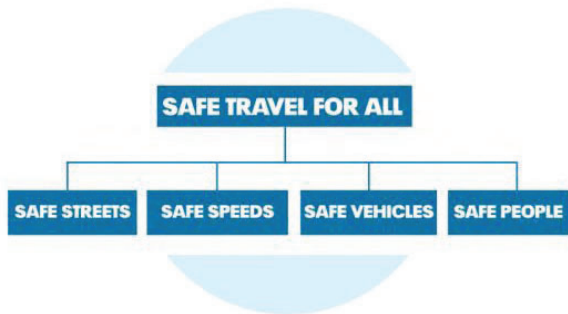
Promote safer speeds in all roadway environments through a combination of thoughtful, equitable, context-appropriate roadway design, appropriate speed-limit setting, targeted education, outreach campaigns, and enforcement.

### Post-Crash Care

Enhance the survivability of crashes through expedient access to emergency medical care, while creating a safe working environment for vital first responders and preventing secondary crashes through robust traffic incident management practices.

# Vision Zero

Vision Zero is more than a goal, more than a tagline, more than even just a program. It is a fundamental shift in how we approach roadway safety.



## Core Elements for Vision Zero

- Traffic deaths are **preventable**
- Integrate **human failing** in approach
- Prevent **fatal and severe crashes**
- **Systems** approach
- Saving lives in **not expensive**

## Target Zero

Target Zero is a statewide initiative to reduce the number of transportation-related serious injuries and deaths across Florida to ZERO.

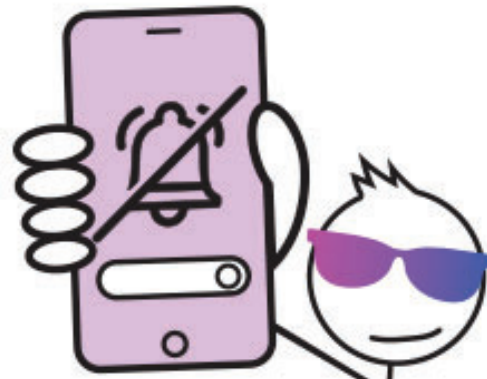
Target Zero is:

- Data-driven
- Identifies behaviors
- Targets specific audiences
- Impactful messages to influence safe driving

Each day on Florida roads,  
there are **9** fatalities  
and **44** serious injuries



**DRIVE TIME IS YOU TIME**  
Ride with **DO NOT DISTURB**



<https://www.fdot.gov/agencyresources/target-zero>

## Safety Resources:

Southwest Florida Roads - D1 Projects  
D1 Safety Sharepoint  
D1 Safety Website

[www.swflroads.com](http://www.swflroads.com)  
<https://fldot.sharepoint.com/sites/D1-Safety>  
[www.swflroads.com/d1safety](http://www.swflroads.com/d1safety)



D1 Safety Website