

MATCHLINE A



MATCHLINE A

MATCHLINE B

**SECTION 16050 -- MP 0.000 to MP 1.175  
S.R. 600 FROM HINSON AVENUE  
TO MCKEOWN AVENUE  
POLK COUNTY - FLORIDA**

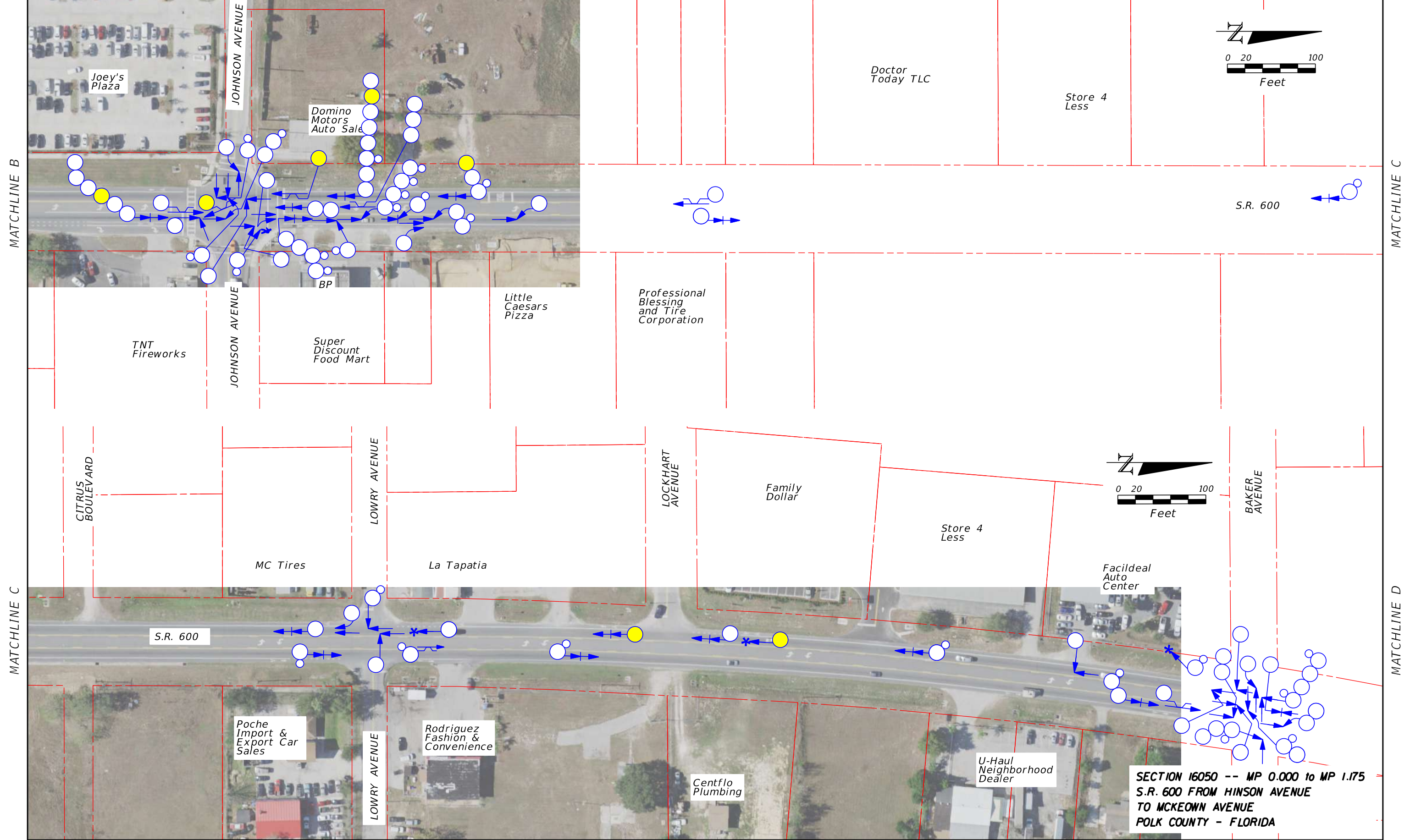
SYMBOLS:			
	SHORT FORM		REAR END COLLISION
	LONG FORM		FIXED OBJECT COLLISION
	PERSONAL INJURY		HEAD-ON COLLISION
	FATALITY		ALL OTHER COLLISION
			BACKED INTO COLLISION
			OFFROAD COLLISION
			BICYCLE COLLISION
			PEDESTRIAN COLLISION
			OVERTURNED VEHICLE
			RIGHT TURN COLLISION
			LEFT TURN COLLISION
			SIDE SWIPE COLLISION

*Traffic Engineering Data Solutions, Inc.*  
80 Spring Vista Drive Phone: 386.753.0558  
DeBary, FL 32713 Fax: 386.753.0778

STATE OF FLORIDA  
DEPARTMENT OF TRANSPORTATION

COLLISION DIAGRAM  
(1/01/2014 TO 12/31/2018)  
PAGE 1 OF 3

PAGE NO.



MATCHLINE B

MATCHLINE C

MATCHLINE C

MATCHLINE D

SYMBOLS:			
	SHORT FORM		REAR END COLLISION
	LONG FORM		FIXED OBJECT COLLISION
	PERSONAL INJURY		HEAD-ON COLLISION
	FATALITY		ALL OTHER COLLISION
			BACKED INTO COLLISION
			OFFROAD COLLISION
			OVERTURNED VEHICLE
			SIDE SWIPE COLLISION
			BICYCLE COLLISION
			PEDESTRIAN COLLISION
			RIGHT TURN COLLISION
			LEFT TURN COLLISION

*Traffic Engineering Data Solutions, Inc.*  
 80 Spring Vista Drive Phone: 386.753.0538  
 DeBary, FL 32713 Fax: 386.753.0778

STATE OF FLORIDA  
 DEPARTMENT OF TRANSPORTATION

COLLISION DIAGRAM  
 (1/01/2014 TO 12/31/2018)  
 PAGE 2 OF 3

PAGE NO.

**SECTION 16050 -- MP 0.000 to MP 1.175  
 S.R. 600 FROM HINSON AVENUE  
 TO MCKEOWN AVENUE  
 POLK COUNTY - FLORIDA**

MATCHLINE D



**SECTION 16050 -- MP 0.000 to MP 1.175  
S.R. 600 FROM HINSON AVENUE  
TO MCKEOWN AVENUE  
POLK COUNTY - FLORIDA**

SYMBOLS:			
	SHORT FORM		REAR END COLLISION
	LONG FORM		FIXED OBJECT COLLISION
	PERSONAL INJURY		HEAD-ON COLLISION
	FATALITY		ALL OTHER COLLISION
			BACKED INTO COLLISION
			OFFROAD COLLISION
			OVERTURNED VEHICLE
			BICYCLE COLLISION
			PEDESTRIAN COLLISION
			RIGHT TURN COLLISION
			LEFT TURN COLLISION
			SIDE SWIPE COLLISION

*Traffic Engineering Data Solutions, Inc.*  
80 Spring Vista Drive Phone: 386.753.0558  
DeBary, FL 32713 Fax: 386.753.0778

STATE OF FLORIDA  
DEPARTMENT OF TRANSPORTATION

COLLISION DIAGRAM  
(1/01/2014 TO 12/31/2018)  
PAGE 3 OF 3

PAGE NO.