

STATE ROAD 29 FROM I-75 TO OIL WELL ROAD

PROJECT DEVELOPMENT & ENVIRONMENT (PD&E) STUDY

ENVIRONMENTAL ADVISORY GROUP
MEETING #2

October 1, 2020

FM NO.: 434490-1-22-01



State Road 29 PD&E Study

Meeting Agenda

- Introduction
- FDOT Presentation
 - Review Preliminary Analysis
 - Project Status and Next Steps
- Focused Discussion ★
- Open Discussion
- Closing



State Road 29 PD&E Study

Environmental Advisory Group (EAG)

- EAG Goals
 - To share information and ideas that help achieve the project purpose and need with the least overall harm
 - To assist in the identification of environmental issues to be addressed within the scope of this PD&E Study
- EAG Member Role
 - Provide feedback and comments regarding the PD&E study information presented
 - Assist in the identification of potential project impacts, opportunities and constraints
 - Identify or clarify environmental, community, social, and/or transportation issues that are relevant to the study area
 - Act as a point of contact from and to your organizations sharing and providing information
 - Be aware of and cooperative regarding the project goals and timeframes

State Road 29 PD&E Study

EAG Previous Coordination

- EAG Meeting #1:
 - May 9, 2019
 - EAG Discussion included:
 - Existing hydrology concerns
 - Southwest Florida Comprehensive Watershed Plan and other regional goals
 - Canal Ownership belongs to adjacent landowners
 - Continue close coordination to find opportunities to implement into project

- August 16, 2019 Letter
 - Project Concerns
 - Agency Recommendations



United States Department of the Interior

NATIONAL PARK SERVICE
Big Cypress National Preserve
33100 Tamiami Trail East
Ochopee, Florida 34141-9710

US FISH & Wildlife Service
Florida Panther National Wildlife Refuge
12085 State Road 29 S
Immokalee, FL 34142

State Road 29 PD&E Study

Purpose & Need

- Improve Safety
- Provide System Linkage
- Increase Capacity
- Meet Future Transportation Demand



DRIVE SAFELY
IN MEMORY OF
RAUL RIVERA

DRIVE SAFELY
IN MEMORY OF
DANIEL M GARCIA

DRIVE SAFELY
IN MEMORY OF
NABOR ROLANDO
GARCIA



United States Department of the Interior

NATIONAL PARK SERVICE
Big Cypress National Preserve
33100 Tamiami Trail East
Ochopee, Florida 34141-9710

US FISH & Wildlife Service
Florida Panther National Wildlife Refuge
12085 State Road 29 S
Immokalee, FL 34142

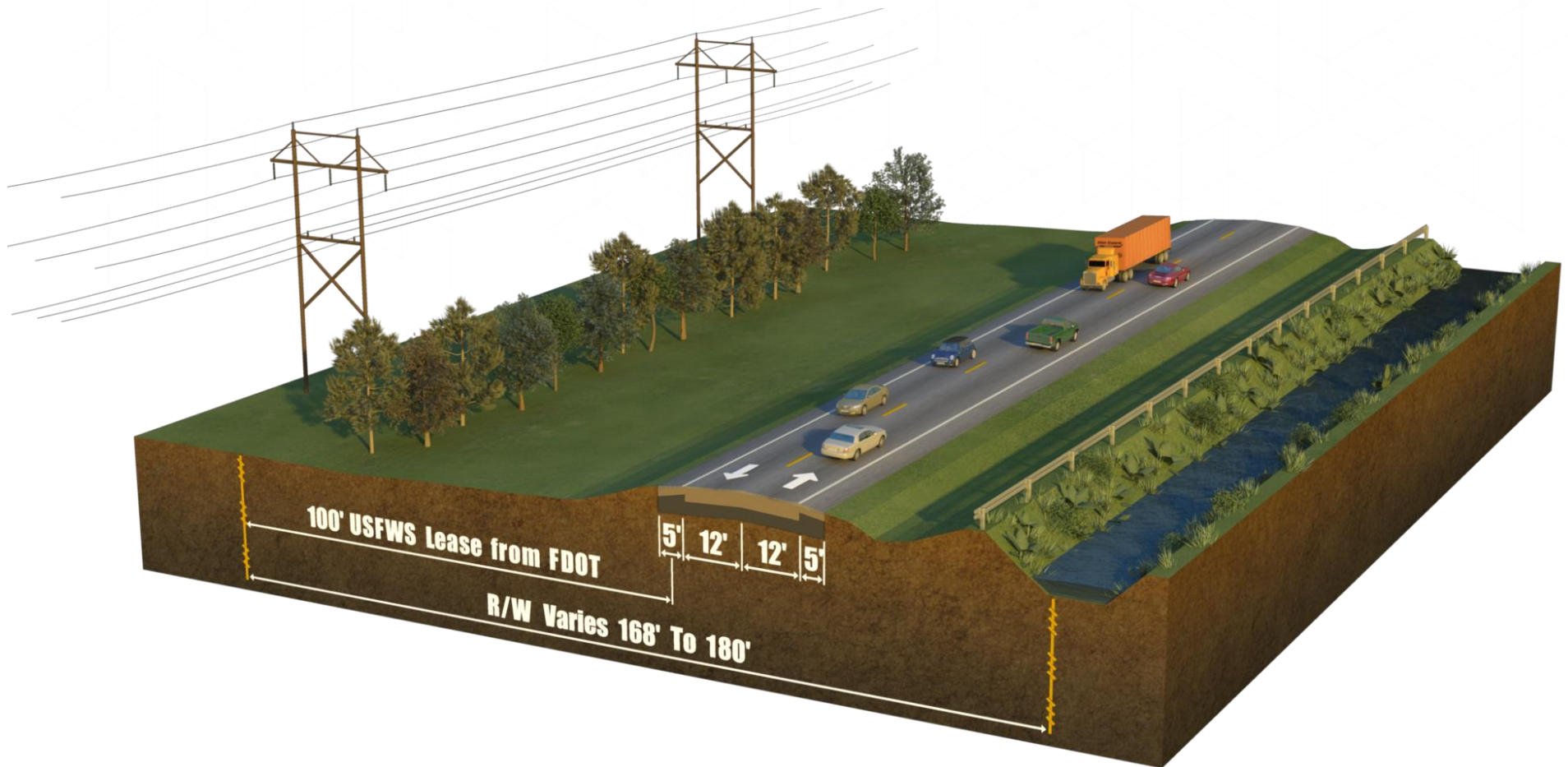
Recommendation:

- *Broader project purpose and need*

State Road 29 PD&E Study

Existing SR 29

- Two lane, undivided rural principal arterial
- Design Speed: 65 mph
- Project Length: 10.2 miles
- Strategic Intermodal System (SIS) Facility
- USFWS FPNWR leases western 100' of right-of-way (R/W)
- No existing sidewalk or trail features



State Road 29 PD&E Study

Preliminary Typical Section Analysis

Two Lane Enhanced – Barrier separated with inside shoulders

Does not meet Purpose and Need as it does not increase capacity or meet future demand

Two Lanes with Passing Lanes

Does not meet Purpose and Need as it does not increase capacity or meet future demand

Four Lane Divided

Meets Purpose and Need



United States Department of the Interior

NATIONAL PARK SERVICE
Big Cypress National Preserve
33100 Tamiami Trail East
Ochopee, Florida 34141-9710

US FISH & Wildlife Service
Florida Panther National Wildlife Refuge
12085 State Road 29 S
Immokalee, FL 34142

Recommendation:

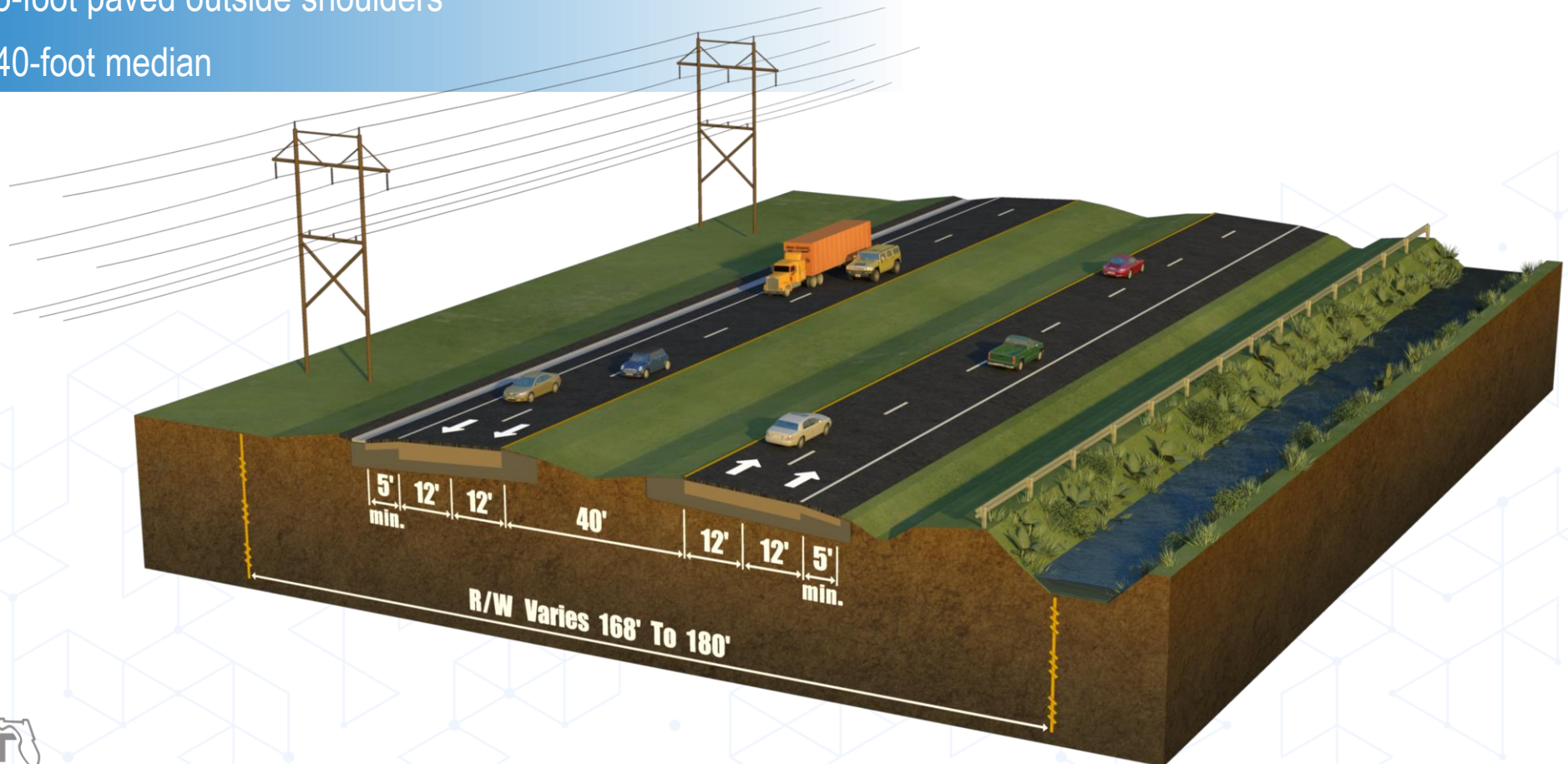
- *Consider full and robust range of alternatives*

State Road 29 PD&E Study

Preliminary Typical Section Analysis

Four Lane Typical Section Features

- Accommodated within existing R/W
- Four 12-foot lanes
- 5-foot paved outside shoulders
- 40-foot median

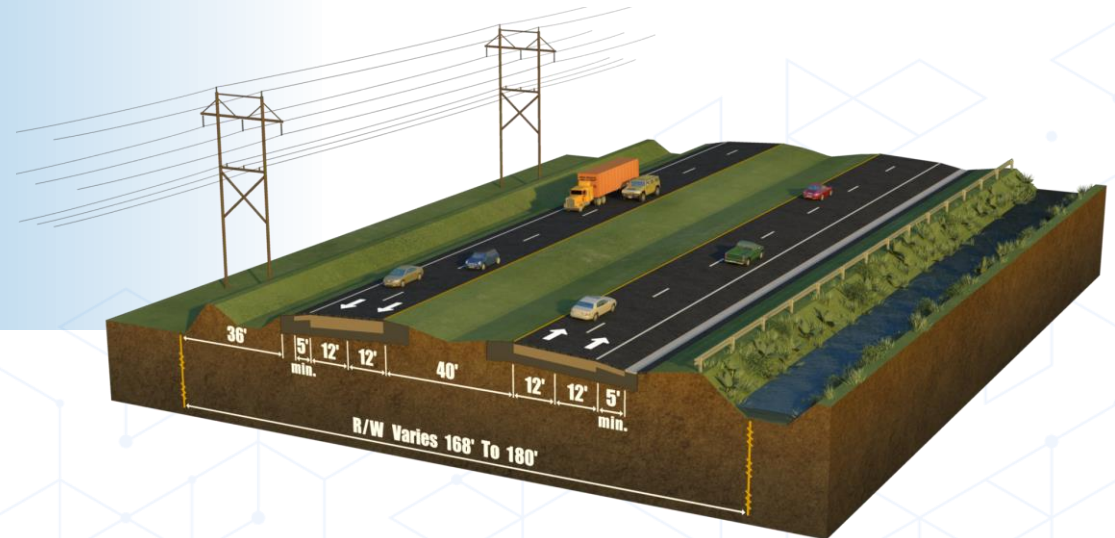
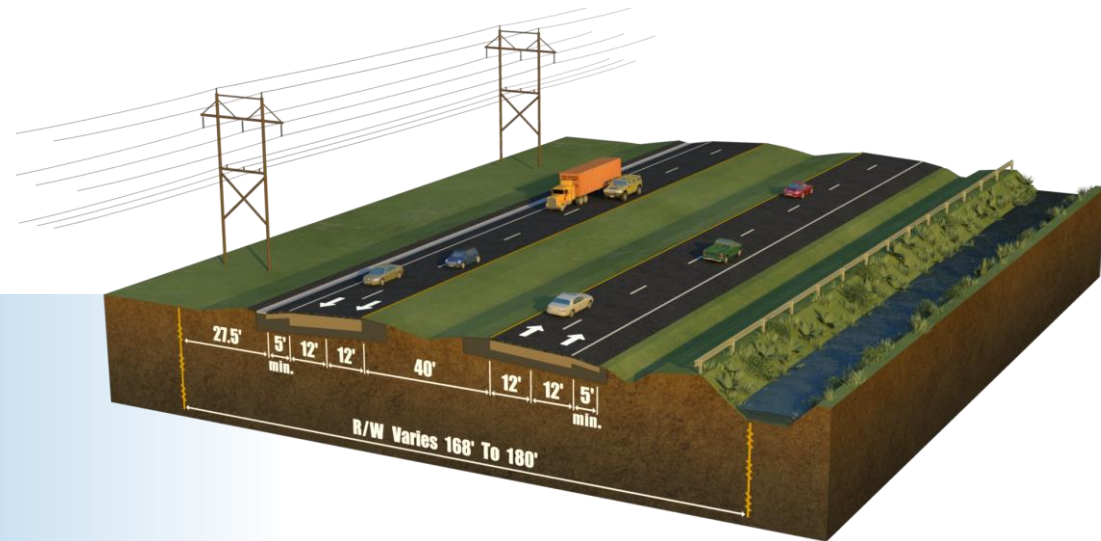


State Road 29 PD&E Study

Concept Development ★

Widening Alternative

- Existing lanes remain in current location as NB lanes
- New SB lanes constructed within R/W
- Two Options for Widening
 - Maintain existing road in current location
 - Shift existing road 7' east
- Drainage accommodated by offsite ponds
- No sidewalk or trail features

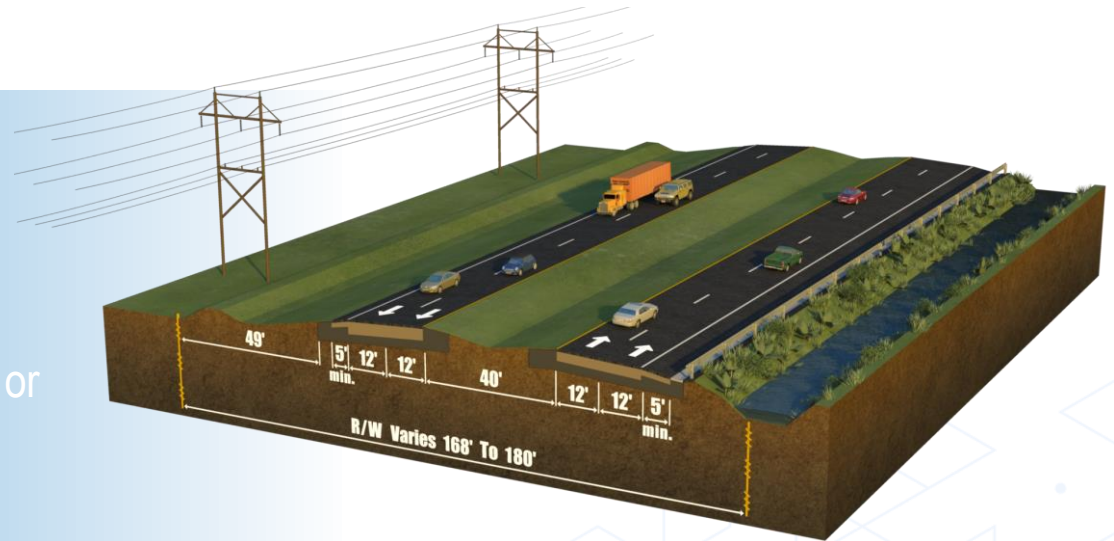


State Road 29 PD&E Study

Concept Development ★

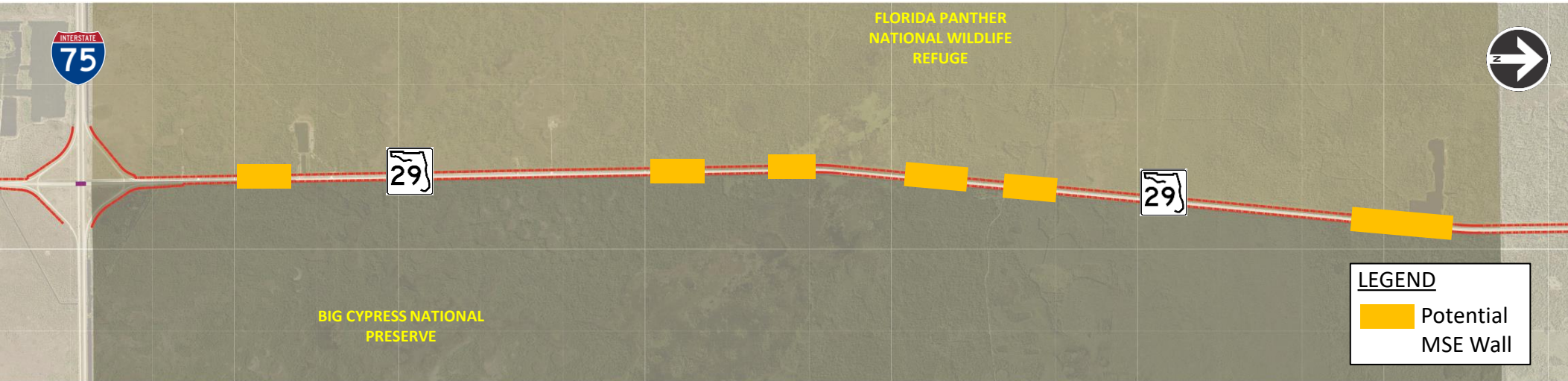
Reconstruction Alternative

- Reconstruct entire road to center improvements within R/W
- Drainage accommodated by offsite ponds or linear treatment within R/W
- No sidewalk or trail features



State Road 29 PD&E Study

Constrained Areas



- Transmission easement (west)
- Canal (east)
- Areas with large elevation differences (see map)
- Avoid/Minimize Impacts by:
 - Holding existing R/W lines
 - MSE Wall where necessary
 - Shoulder gutter (no roadside swale) where necessary



United States Department of the Interior

<p>NATIONAL PARK SERVICE Big Cypress National Preserve 33100 Tamiami Trail East Ochopee, Florida 34141-9710</p>	<p>US FISH & Wildlife Service Florida Panther National Wildlife Refuge 12085 State Road 29 S Immokalee, FL 34142</p>
--	---

Recommendation:

- *Single bridge from Bear Island Rd to Pistol Pond*
- *Single bridge at Henson Marsh*

State Road 29 PD&E Study

Preliminary Drainage Concepts ★

Approach #1: Offsite Ponds with Canal Conveyance

- Direct discharge into canal
 - Requires canal modifications
- Canal flow directed into offsite drainage ponds
- Additional R/W needed for offsite ponds
- Requires significant stakeholder coordination
 - Canal owned by adjacent landowners
- Can be used with both widening and reconstruction alternatives



United States Department of the Interior

NATIONAL PARK SERVICE
Big Cypress National Preserve
33100 Tamiami Trail East
Ochopee, Florida 34141-9710

US FISH & Wildlife Service
Florida Panther National Wildlife Refuge
12085 State Road 29 S
Immokalee, FL 34142

Recommendation:

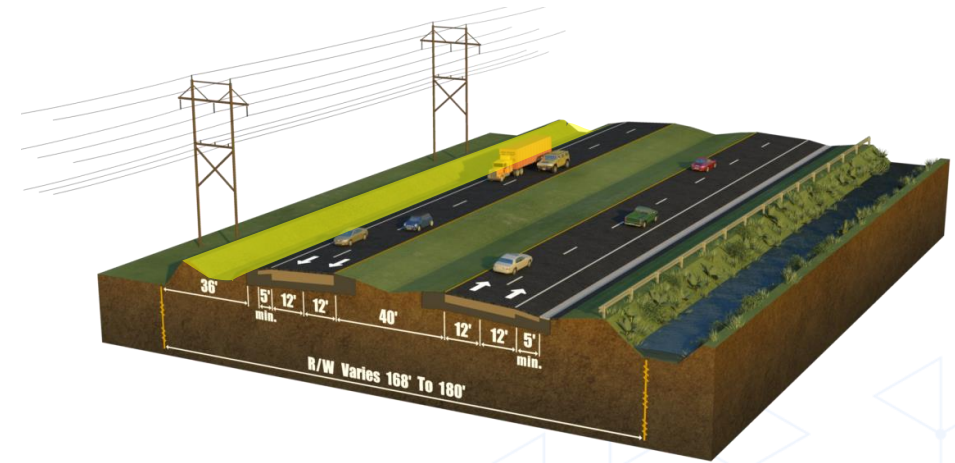
- Improvements to canal
- New culverts at key locations / comprehensive hydraulic study

State Road 29 PD&E Study

Preliminary Drainage Concepts ★

Approach #2: Offsite Ponds with Swale Conveyance

- Linear swale conveys stormwater to offsite ponds for treatment and attenuation
- Additional R/W needed for offsite ponds
- Canal not used for conveyance, treatment, or attenuation
- Can be used with both widening and reconstruction alternatives



United States Department of the Interior

NATIONAL PARK SERVICE
Big Cypress National Preserve
33100 Tamiami Trail East
Ochopee, Florida 34141-9710

US FISH & Wildlife Service
Florida Panther National Wildlife Refuge
12085 State Road 29 S
Immokalee, FL 34142

Recommendation:

- Improvements to canal
- New culverts at key locations / comprehensive hydraulic study

State Road 29 PD&E Study

Preliminary Drainage Concepts ★

Approach #3: Linear Swales

- Roadside linear swales provide treatment and attenuation within R/W
- No offsite ponds necessary
- Canal not used for conveyance, treatment, or attenuation
- Can only be used with reconstruction alternatives



United States Department of the Interior

NATIONAL PARK SERVICE
Big Cypress National Preserve
33100 Tamiami Trail East
Ochopee, Florida 34141-9710

US FISH & Wildlife Service
Florida Panther National Wildlife Refuge
12085 State Road 29 S
Immokalee, FL 34142




Recommendation:

- *Improvements to canal*
- *New culverts at key locations / comprehensive hydraulic study*

State Road 29 PD&E Study

Preliminary Environmental Evaluation

- Natural Environment
 - Outstanding Florida Waters (OFW)
 - Federal Species
 - Panther (primary zone)
 - Caracara
 - Snail Kite
 - Bonneted bat
 - Wood Stork
 - Wildlife Crossings ★

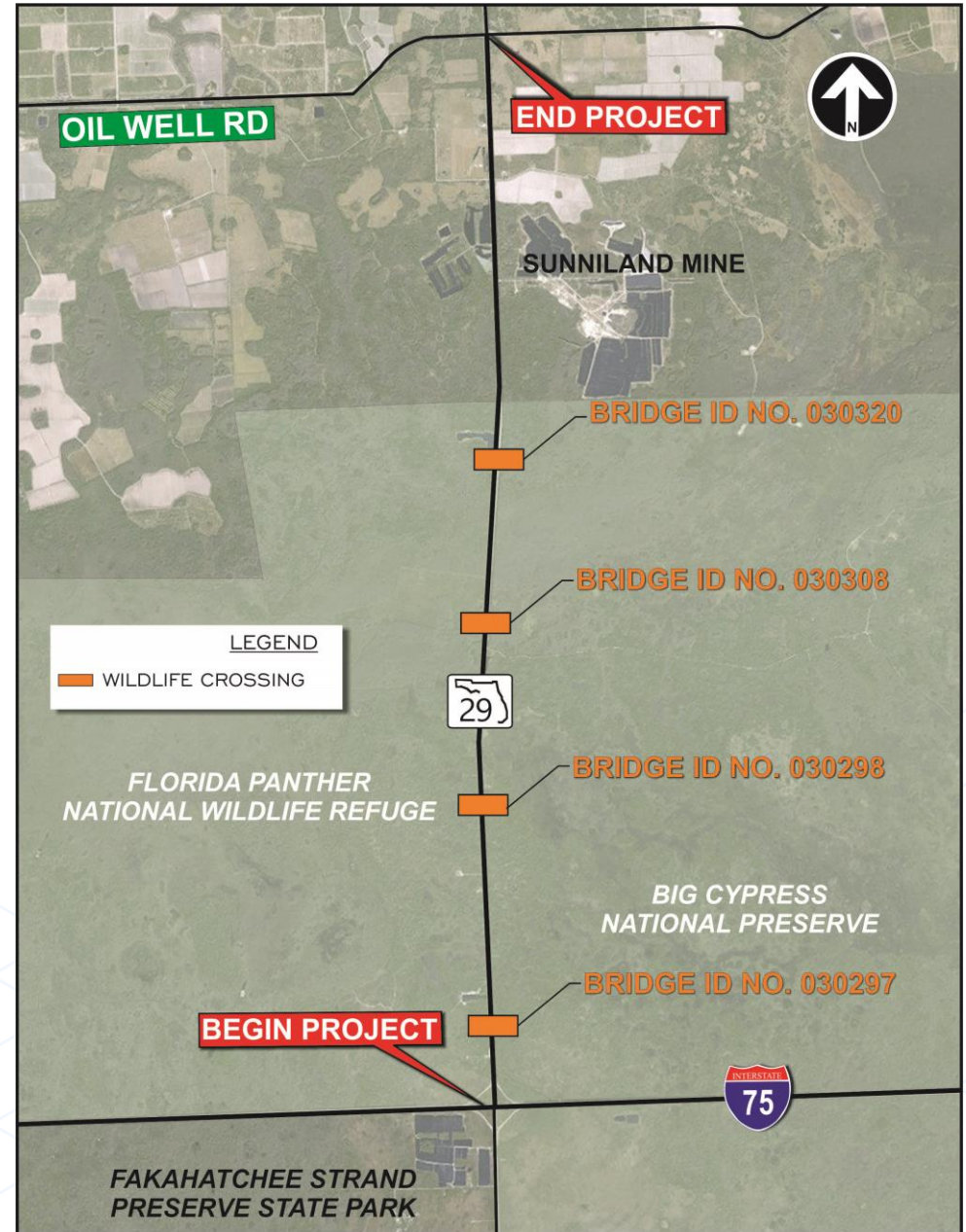


United States Department of the Interior

<p>NATIONAL PARK SERVICE Big Cypress National Preserve 33100 Tamiami Trail East Ochopee, Florida 34141-9710</p>	<p>US FISH & Wildlife Service Florida Panther National Wildlife Refuge 12085 State Road 29 S Immokalee, FL 34142</p>
--	---

Recommendation:


- Shelving under bridges
- Additional crossings at multiple locations
(coordinated with local conservation plans, etc)



State Road 29 PD&E Study

Preliminary Environmental Evaluation

- Socio-Cultural
 - Consistent Tribal Coordination
 - Cultural Resources
 - Potential Section 4(f)
- Physical Environment
 - Noise
 - Contamination

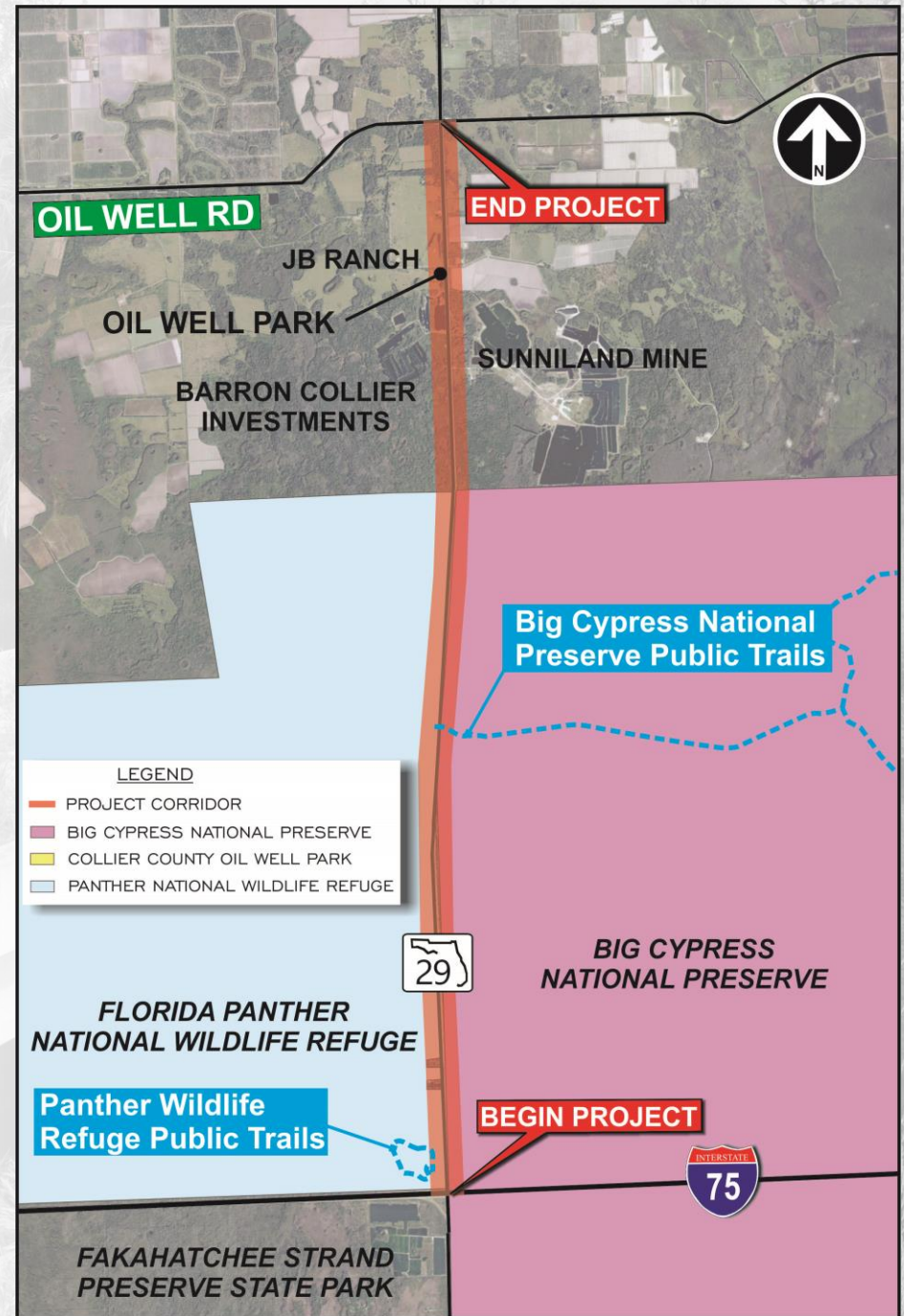


United States Department of the Interior

<p>NATIONAL PARK SERVICE Big Cypress National Preserve 33100 Tamiami Trail East Ochopee, Florida 34141-9710</p>	<p>US FISH & Wildlife Service Florida Panther National Wildlife Refuge 12085 State Road 29 S Immokalee, FL 34142</p>
--	---

Recommendation:

- Enhance existing and proposed public lands access (list and map provided in letter)

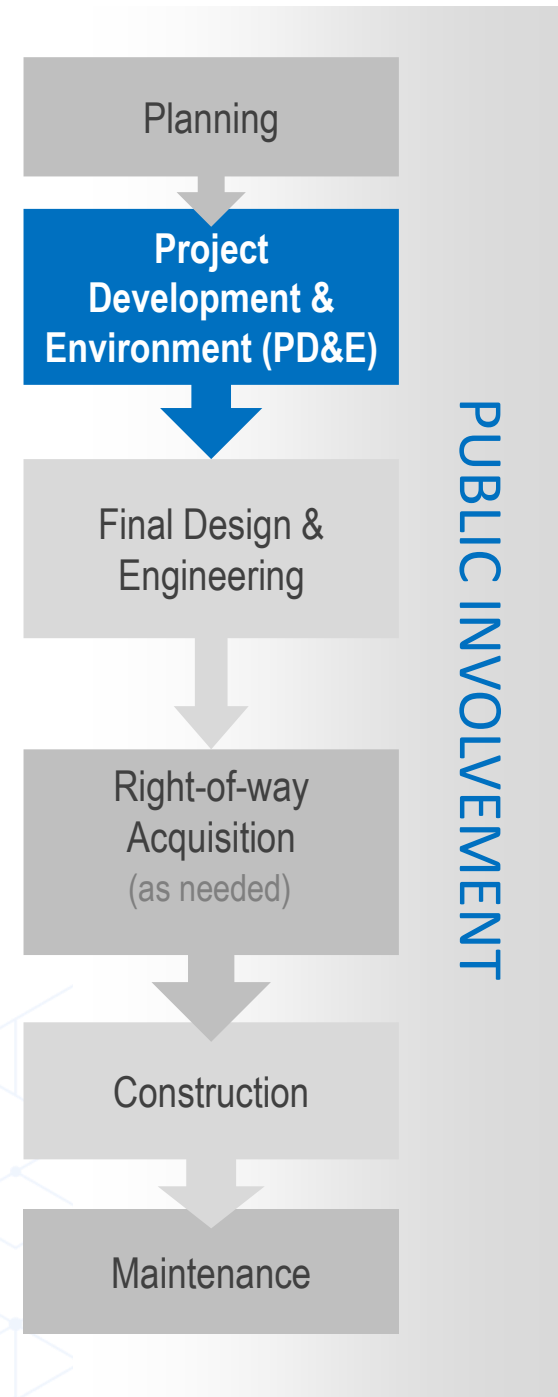


State Road 29 PD&E Study

Project Status

- Future funding discussions on-going with FDOT and Collier MPO
- Adjusting project schedule to accommodate funding and MPO planning document consistency
- EAG members will be notified by email of project next steps when information becomes available

We are here ↘



United States Department of the Interior

NATIONAL PARK SERVICE
Big Cypress National Preserve
33100 Tamiami Trail East
Ochopee, Florida 34141-9710

US FISH & Wildlife Service
Florida Panther National Wildlife Refuge
12085 State Road 29 S
Immokalee, FL 34142

Recommendation:

- *Develop master schedule for projects in the area*

State Road 29 PD&E Study

Focused Discussion

- ★ Widening vs. Reconstruction Alternatives
- ★ Constrained Areas
- ★ Drainage Concepts
- ★ Wildlife Crossings

Rules of Engagement:

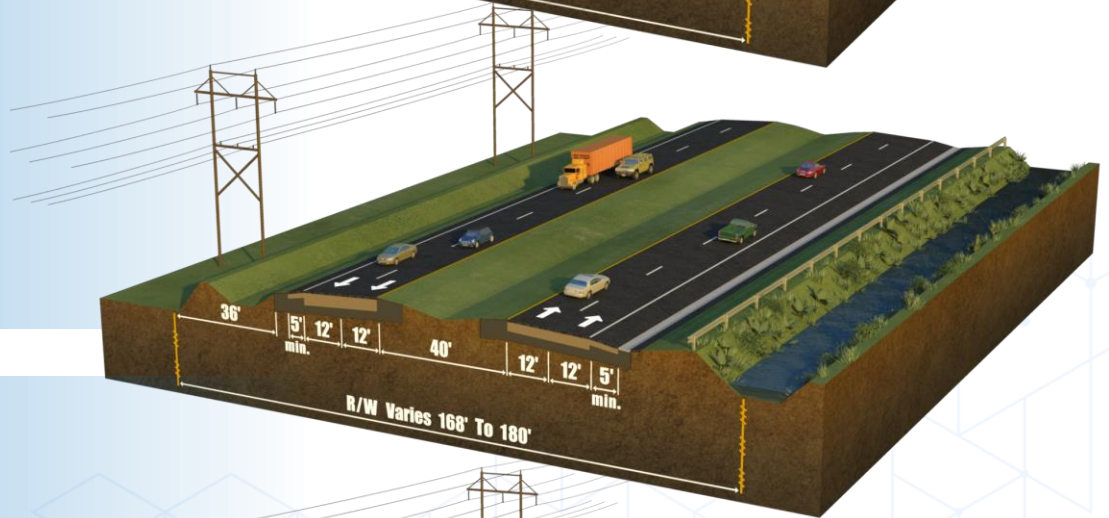
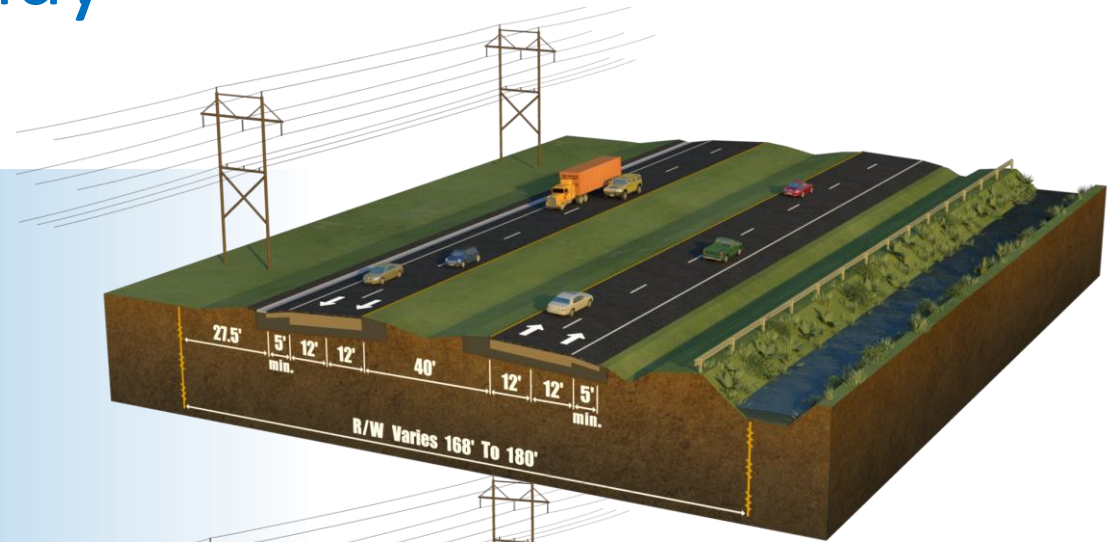
- *Remain muted until your agency is called*
- *State your name clearly for the record*
- *Comments should be centered around the discussion topic at hand*

State Road 29 PD&E Study

Concept Development ★

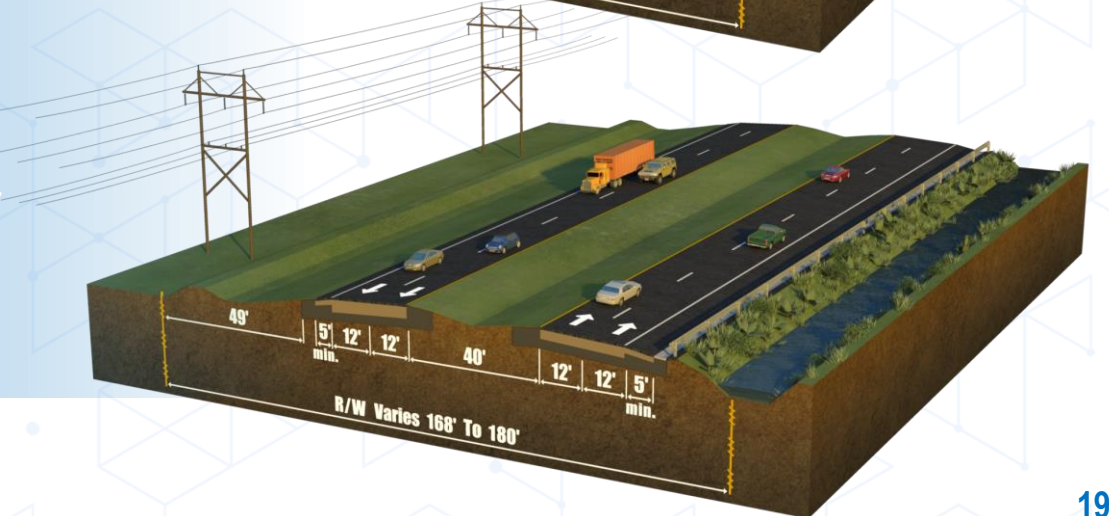
Widening Alternative

- Existing lanes remain in current location as NB lanes
- New SB lanes constructed within R/W
- Two Options for Widening
 - Maintain existing road in current location
 - Shift existing road 7' east
- Drainage accommodated by offsite ponds
- No sidewalk or trail features



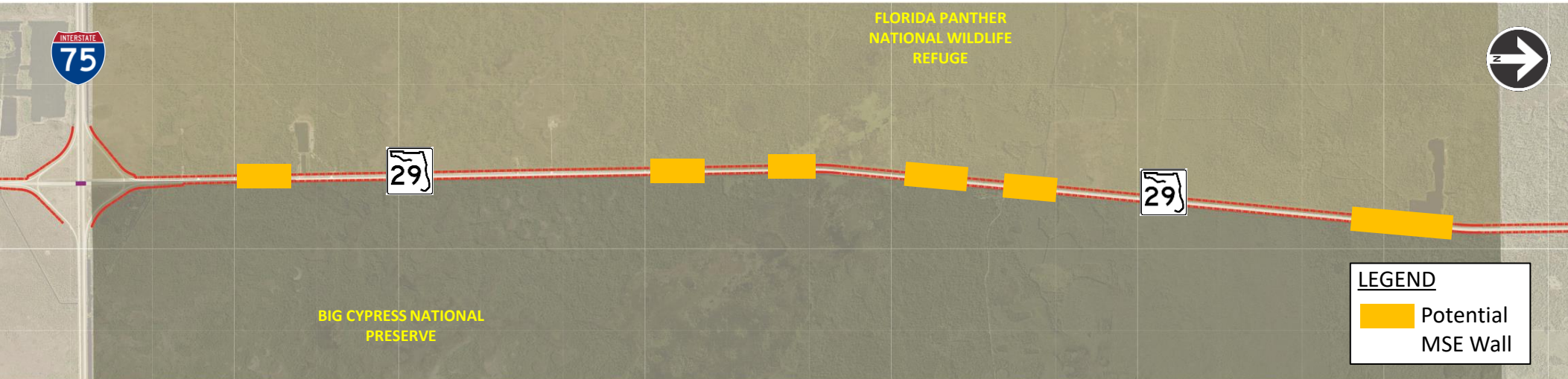
Reconstruction Alternative

- Reconstruct entire road to center improvements within R/W
- Drainage accommodated by offsite ponds or linear treatment within R/W
- No sidewalk or trail features



State Road 29 PD&E Study

Constrained Areas



- Transmission easement (west)
- Canal (east)
- Areas with large elevation differences (see map)
- Avoid/Minimize Impacts by:
 - Holding existing R/W lines
 - MSE Wall where necessary
 - Shoulder gutter (no roadside swale) where necessary

United States Department of the Interior

NATIONAL PARK SERVICE
Big Cypress National Preserve
33100 Tamiami Trail East
Ochopee, Florida 34141-9710

US FISH & Wildlife Service
Florida Panther National Wildlife Refuge
12085 State Road 29 S
Immokalee, FL 34142

Recommendation:

- Single bridge from Bear Island Rd to Pistol Pond
- Single bridge at Henson Marsh

State Road 29 PD&E Study

Preliminary Drainage Concepts

Approach #1: Offsite Ponds with Canal Conveyance

- Direct discharge into canal (requires canal modifications)
- Canal flow directed into offsite drainage ponds
- Additional R/W needed for offsite ponds
- Requires significant stakeholder coordination
 - Canal owned by adjacent landowners
- Can be used with both widening and reconstruction alternatives



Approach #2: Offsite Ponds with Swale Conveyance

- Linear swale conveys stormwater to offsite ponds for treatment and attenuation
- Additional R/W needed for offsite ponds
- Canal not used for conveyance, treatment, or attenuation
- Can be used with both widening and reconstruction alternatives



Approach #3: Linear Swales


- Roadside linear swales provide treatment and attenuation within R/W
- No offsite ponds necessary
- Canal not used for conveyance, treatment, or attenuation
- Can only be used with reconstruction alternatives



State Road 29 PD&E Study

Preliminary Environmental Evaluation

- Natural Environment
 - Outstanding Florida Waters (OFW)
 - Federal Species
 - Panther (primary zone)
 - Caracara
 - Snail Kite
 - Bonneted bat
 - Wood Stork
 - Wildlife Crossings ★

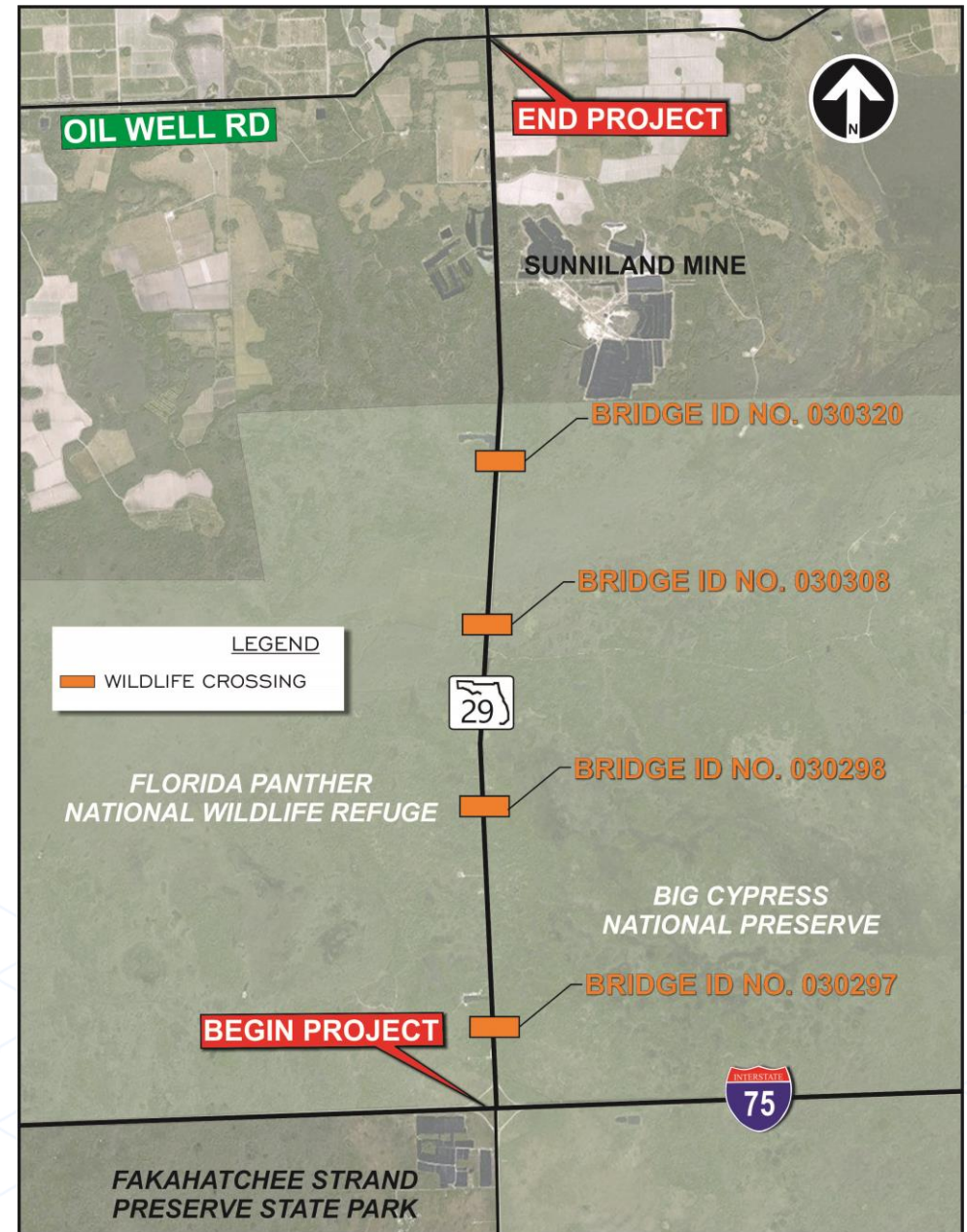


United States Department of the Interior

NATIONAL PARK SERVICE Big Cypress National Preserve 33100 Tamiami Trail East Ochopee, Florida 34141-9710	US FISH & Wildlife Service Florida Panther National Wildlife Refuge 12085 State Road 29 S Immokalee, FL 34142
--	---

Recommendation:

- Shelving under bridges
- Additional crossings at multiple locations
(coordinated with local conservation plans, etc)



State Road 29 PD&E Study

Open Discussion



Thank You!

For more information please contact:

Jennifer Marshall, P.E.

District Environmental Administrator

FDOT District 1

(863) 519-2239

Email: Jennifer.Marshall@dot.state.fl.us

You can also visit our study website:

<http://swflroads.com/sr29/pde/>

