

# Old 41 (County Road 887) PD&E Study

*From US 41 to Bonita Beach Road*



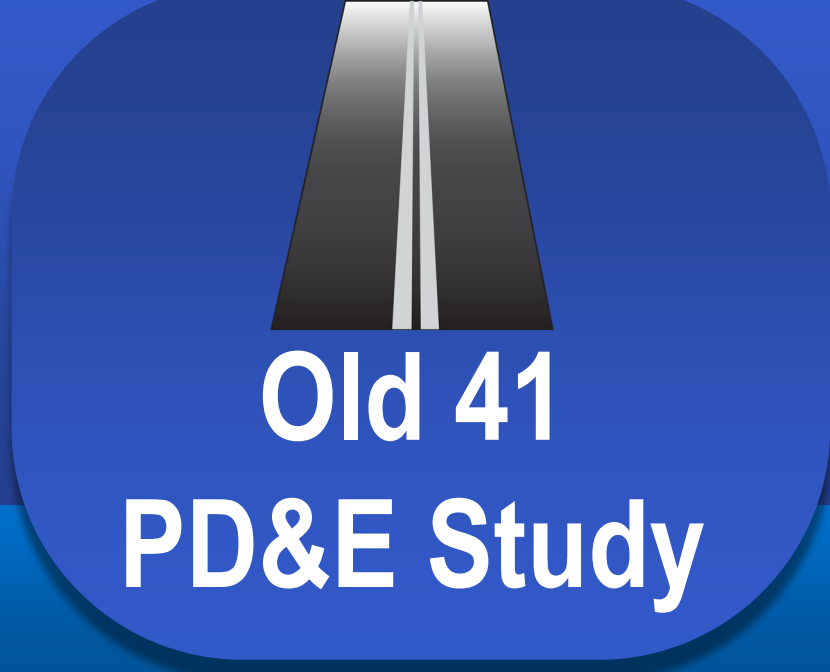
Old 41  
PD&E Study

## **Old 41 (CR 887) Project Development and Environment (PD&E) Study**

**Financial Project Number: 435110-1 & 435347-1  
Collier County & Lee County**

4/5/23





# Old 41 (County Road 887) PD&E Study

*From US 41 to Bonita Beach Road*

Financial Project Number 435110-1 & 435347-1 | Collier County & Lee County



## Cordova NB U-Turn Bulb-Out Alternatives

### Not recommended

- Cordova bulb-out (workshop concept)
- No U-turn accommodations in Lee County
- Roundabout at New Quadrant Roadway 0.8 miles to north

### Community suggestions

- Channel 30 Dr full median opening with driveway relocations
- Jughandle
- Wide median/elliptical roundabout

### Potential solutions

- Constitution Plaza bulb-out 0.5 miles to north
- Causeway Commerce Park bulb-out 0.7 miles to north



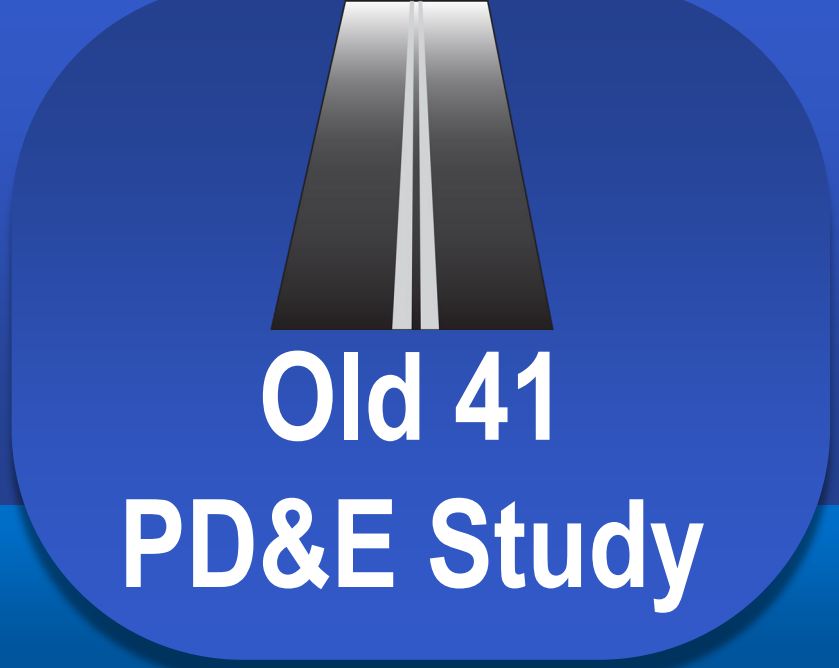
## Cordova bulb-out (workshop concept)

NOT RECOMMENDED



PRO	CON
1,000' max. for trucks before U-turn	Community concerns
Signalized intersection	Long crosswalk
	Entrance/landscaping impacts





# Old 41 (County Road 887) PD&E Study

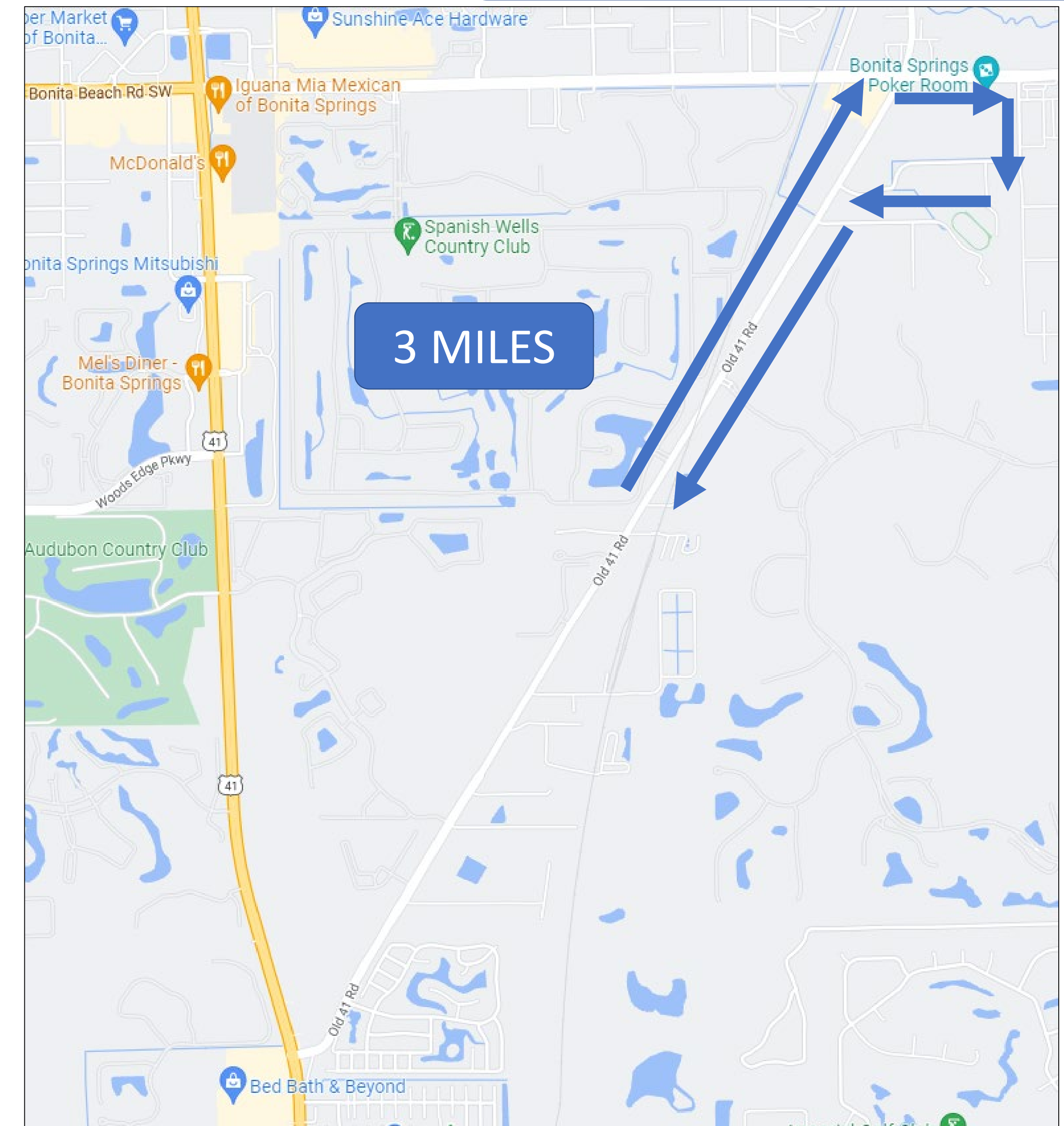
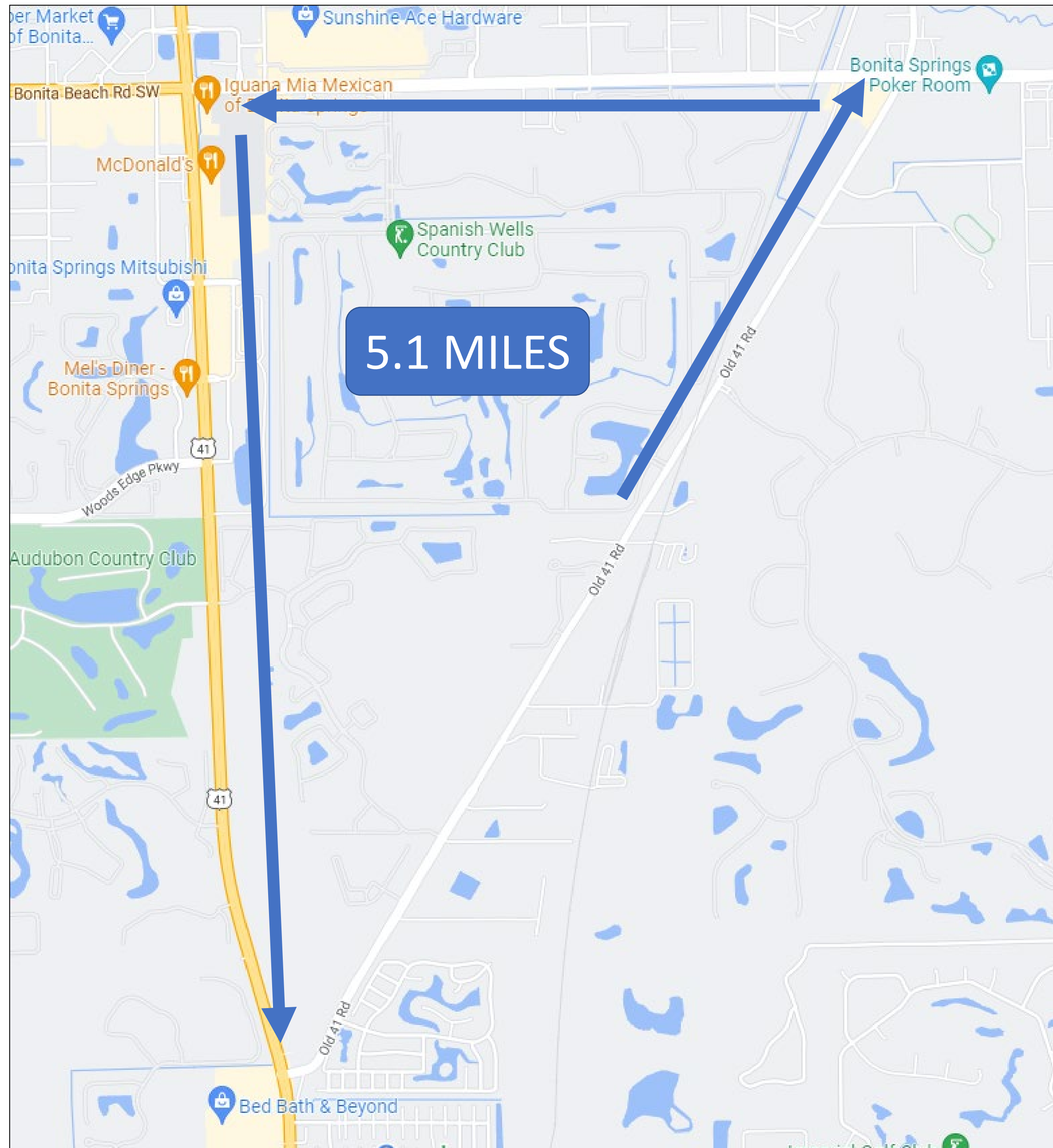
From US 41 to Bonita Beach Road

Financial Project Number 435110-1 & 435347-1 | Collier County & Lee County



## No U-turn Accommodations in Lee County

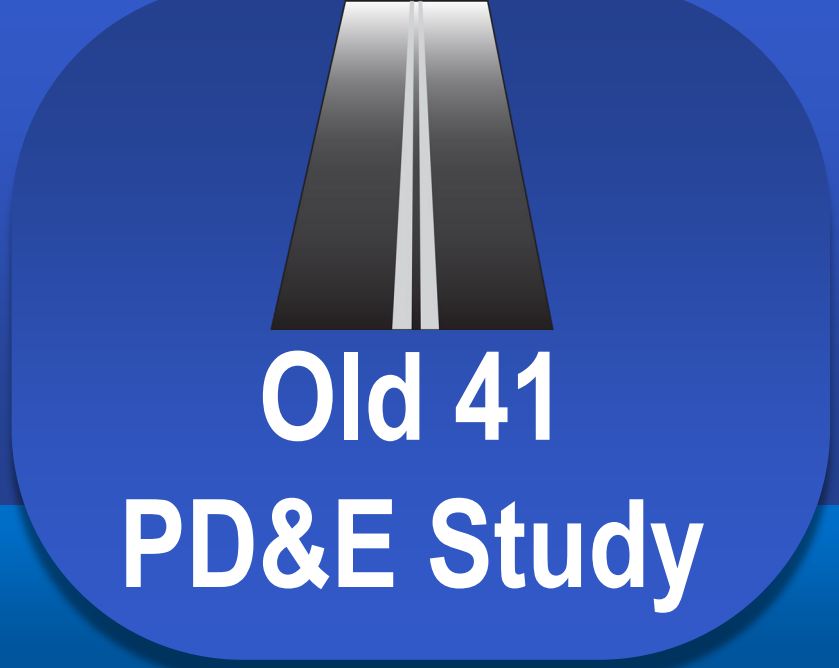
NOT RECOMMENDED



PRO
In line with part of Bonita Springs' request
No additional ROW impacts or costs

CON
Not in line with Collier County's request
3 to 5 mile detour - Adds traffic to already congested roadways





# Old 41 (County Road 887) PD&E Study

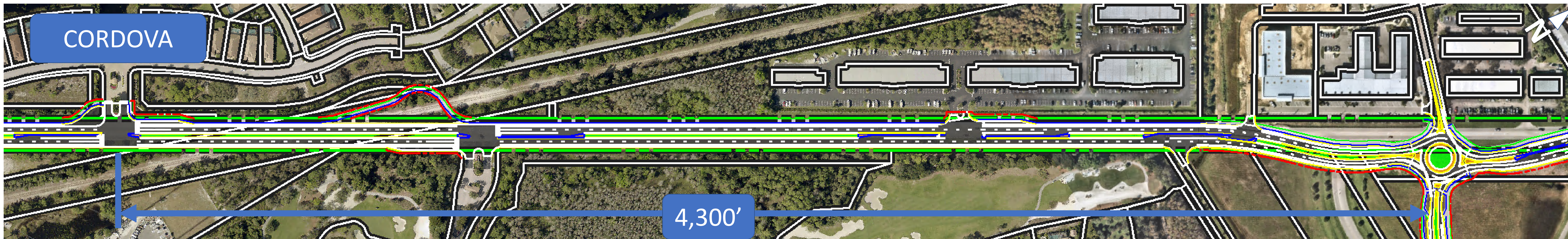
From US 41 to Bonita Beach Road

Financial Project Number 435110-1 & 435347-1 | Collier County & Lee County



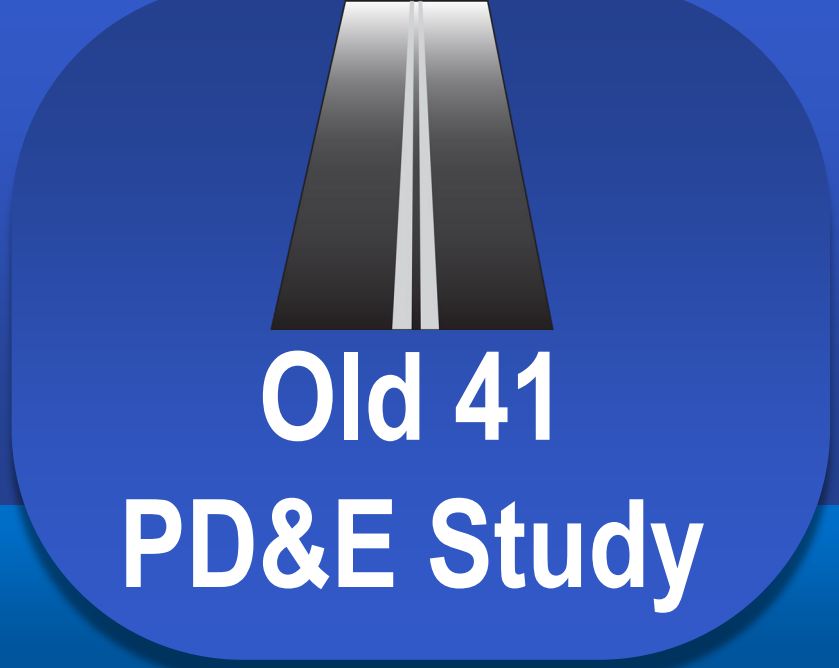
## Roundabout at New Quadrant Roadway

NOT RECOMMENDED



PRO	CON
Commercial area	2-lane <u>roundabout</u> is over capacity and not <u>feasible</u>
No additional ROW impacts or cost	Slow moving trucks in roundabout
Standard intersection signage to direct drivers	Additional 1.6 mile roundtrip for trucks making U-turn - Adds traffic to already congested roadways





# Old 41 (County Road 887) PD&E Study

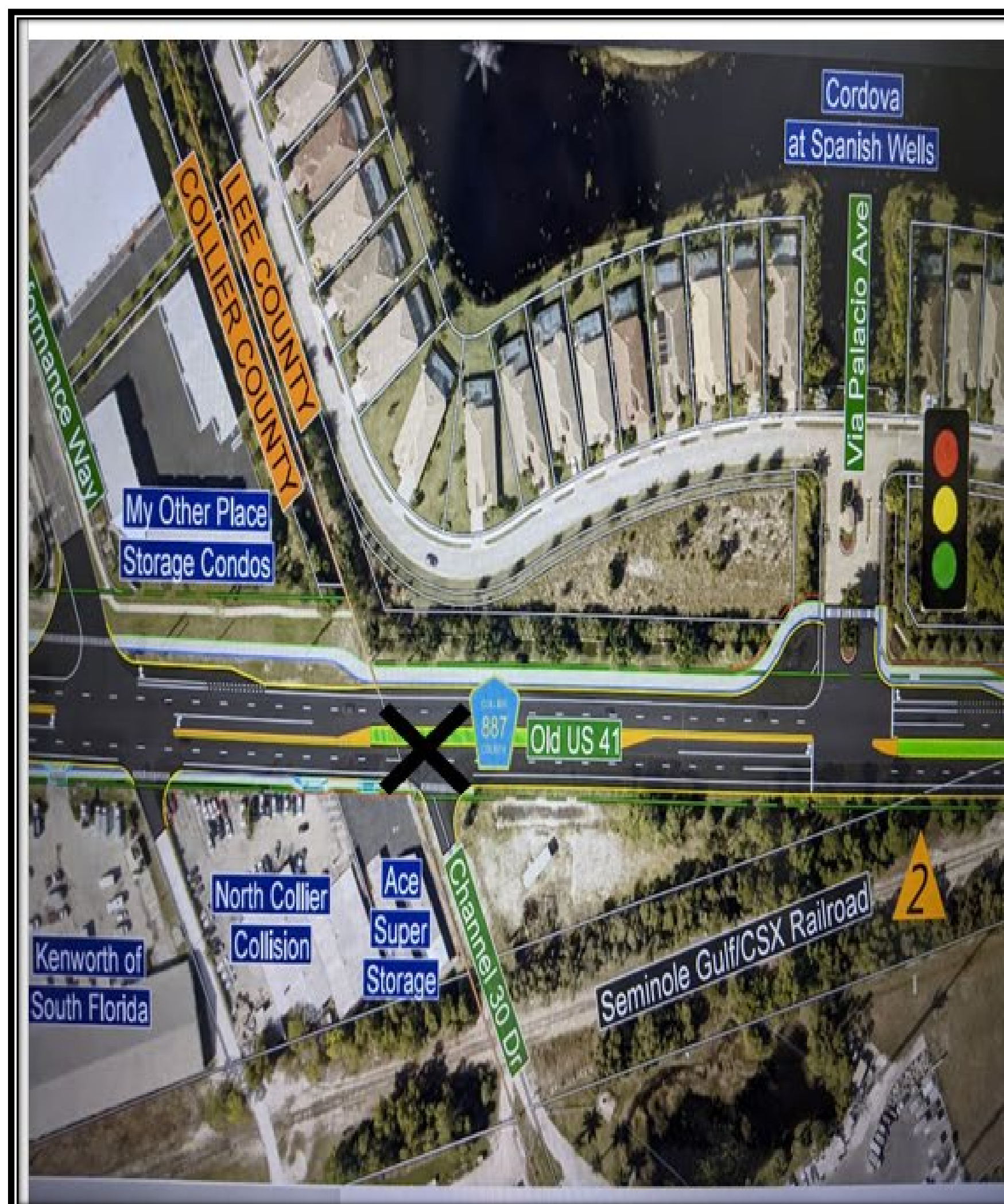
From US 41 to Bonita Beach Road

Financial Project Number 435110-1 & 435347-1 | Collier County & Lee County



## Channel 30 Dr Full Median Opening with Driveway Relocations

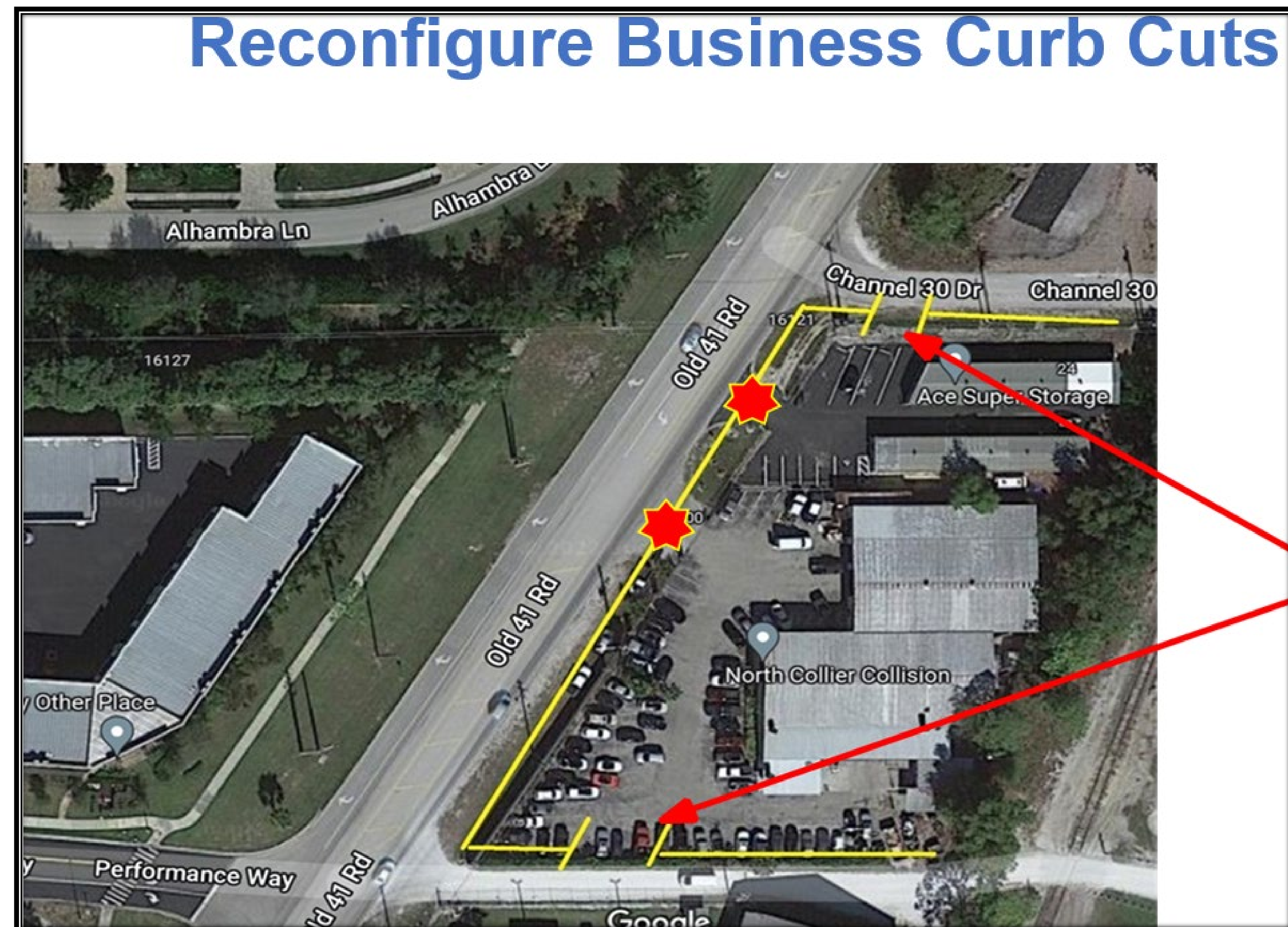
CORDOVA HOA SUGGESTION



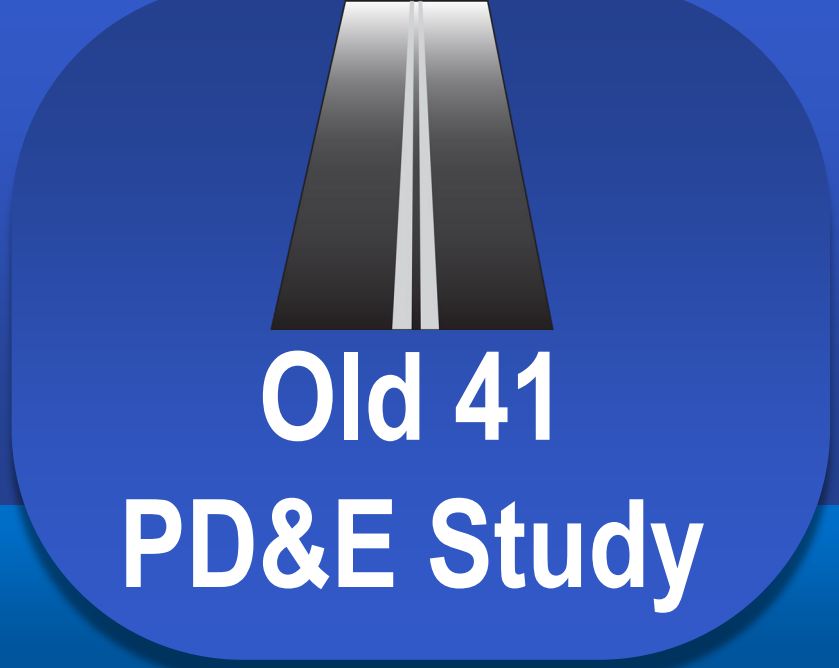
### At Channel 30 Drive Intersection:

- Break in Median **X** Allows left Turns In & Out
- Ace Super Storage uses this option
- North Collier Collision uses Median Break at Performance Way

**Keep Commercial Traffic in Commercial Area!**







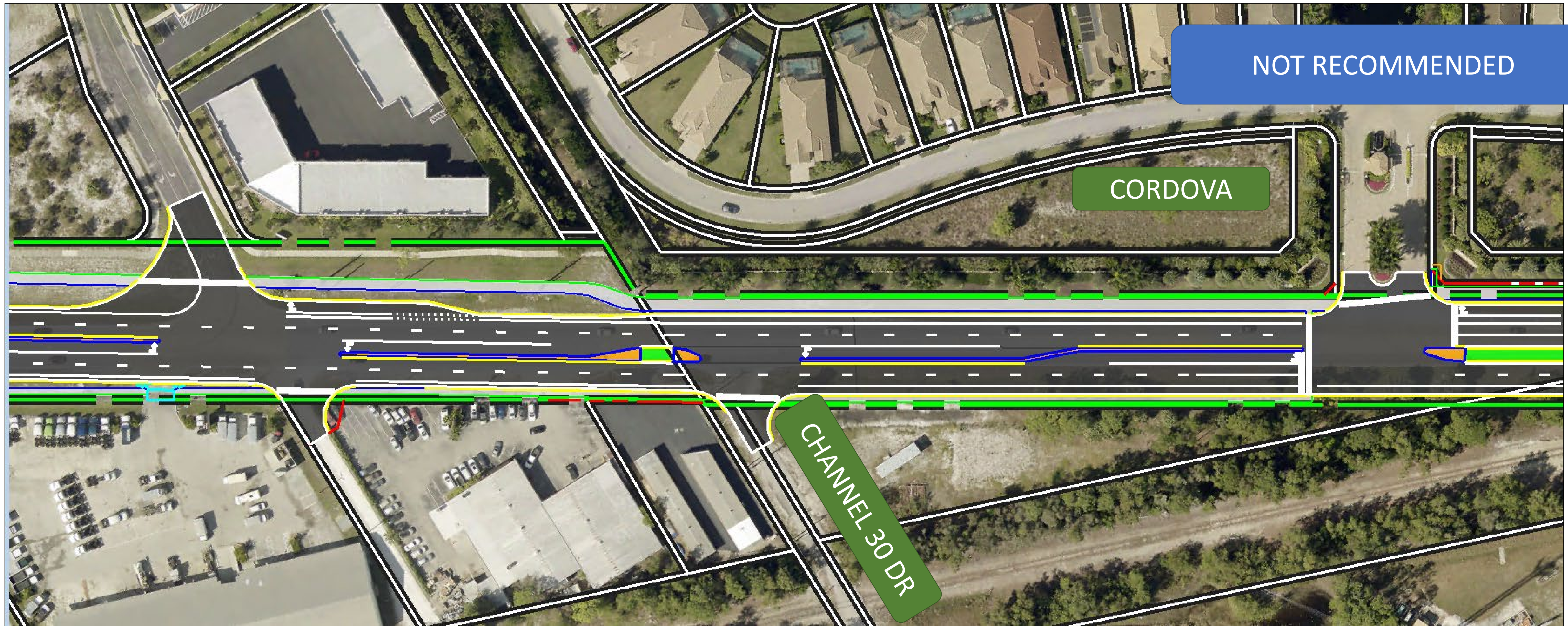
# Old 41 (County Road 887) PD&E Study

From US 41 to Bonita Beach Road

Financial Project Number 435110-1 & 435347-1 | Collier County & Lee County

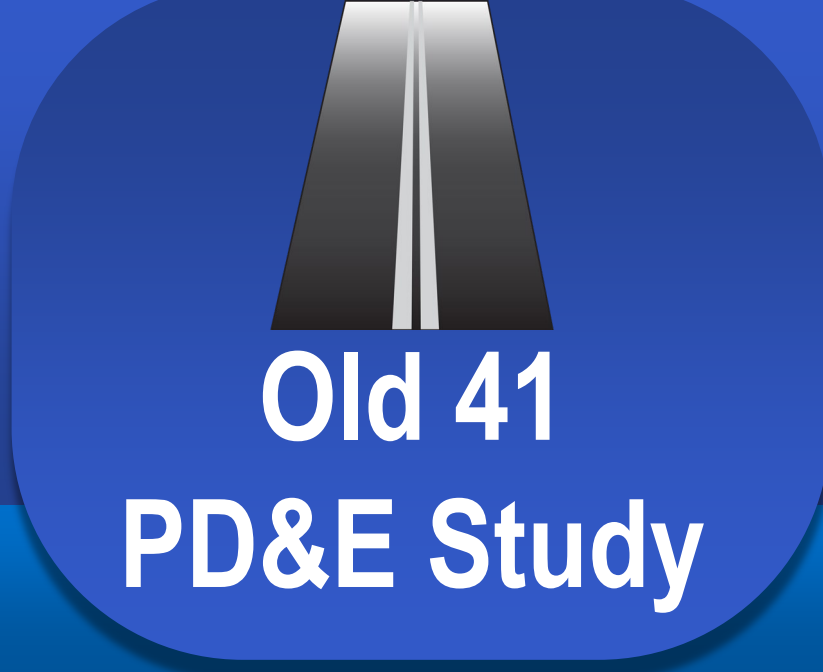


## Channel 30 Dr Full Median Opening with Driveway Relocations



PRO	CON
Commercial/industrial area	Property owner and Collier County agreement
Keeps SB trucks out of Lee County	Reduced left-turn lane storage (sub-standard)
	Safety and operational issues with closely spaced full median openings





# Old 41 (County Road 887) PD&E Study

From US 41 to Bonita Beach Road

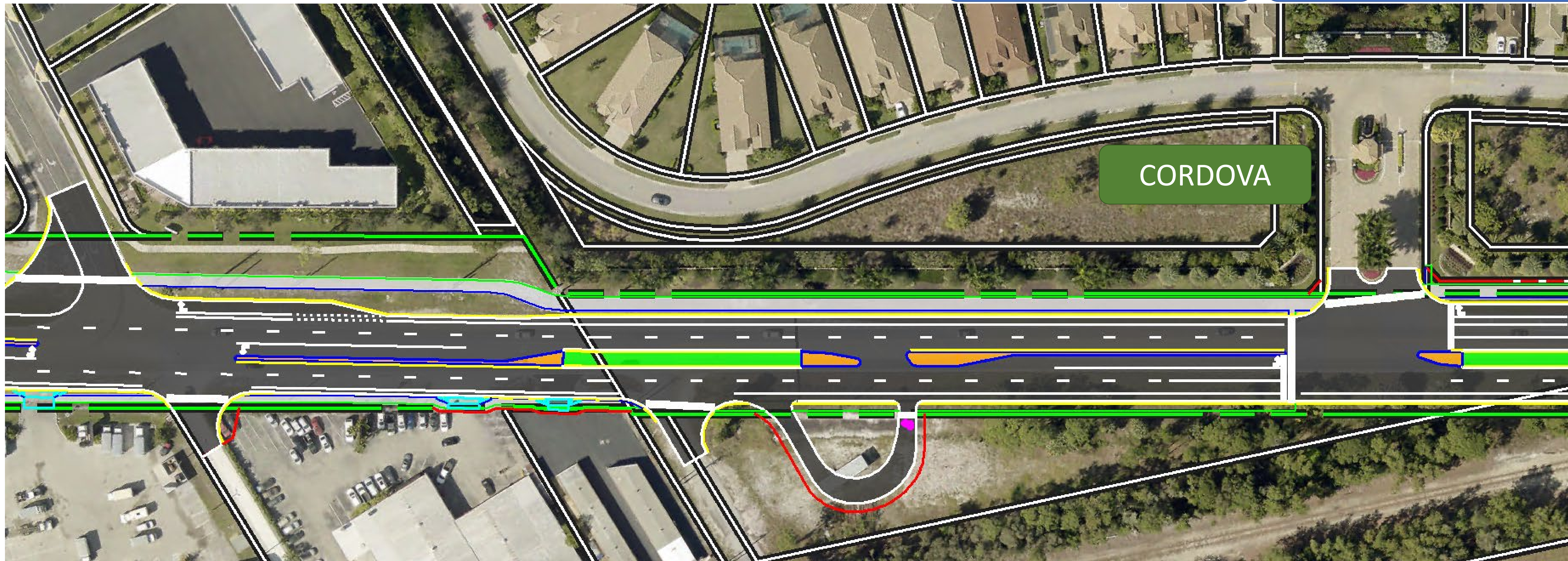
Financial Project Number 435110-1 & 435347-1 | Collier County & Lee County



## Jughandle

CORDOVA RESIDENT SUGGESTION

NOT RECOMMENDED



PRO	CON
Commercial/ industrial area	May require full parcel purchase (\$330K+) Safety and operational issues with closely spaced full median openings
600' max. for trucks before U-turn	Unfamiliar jughandle movement (right turn to U-turn) Reduced safety (additional vehicle conflicts) with need to cross both directions of travel at unsignalized location



## Wide Median/Elliptical Roundabout

CORDOVA HOA  
SUGGESTION

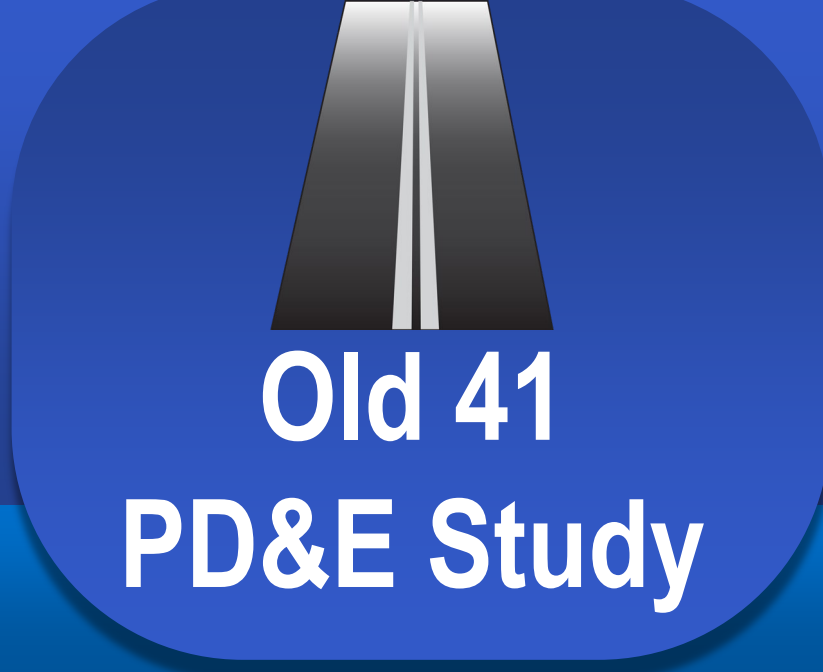
### Acquire Additional ROW on East Side of Old 41



- Obtain 1.14 acre parcel
- Construct a Median U-Turn (MUT)  
OR
- Elliptical Roundabout
- ROW : Lee is 91 feet , Collier 150 feet

**Either Eliminates the need for U-Turn  
Bulb Out at Cordova**





# Old 41 (County Road 887) PD&E Study

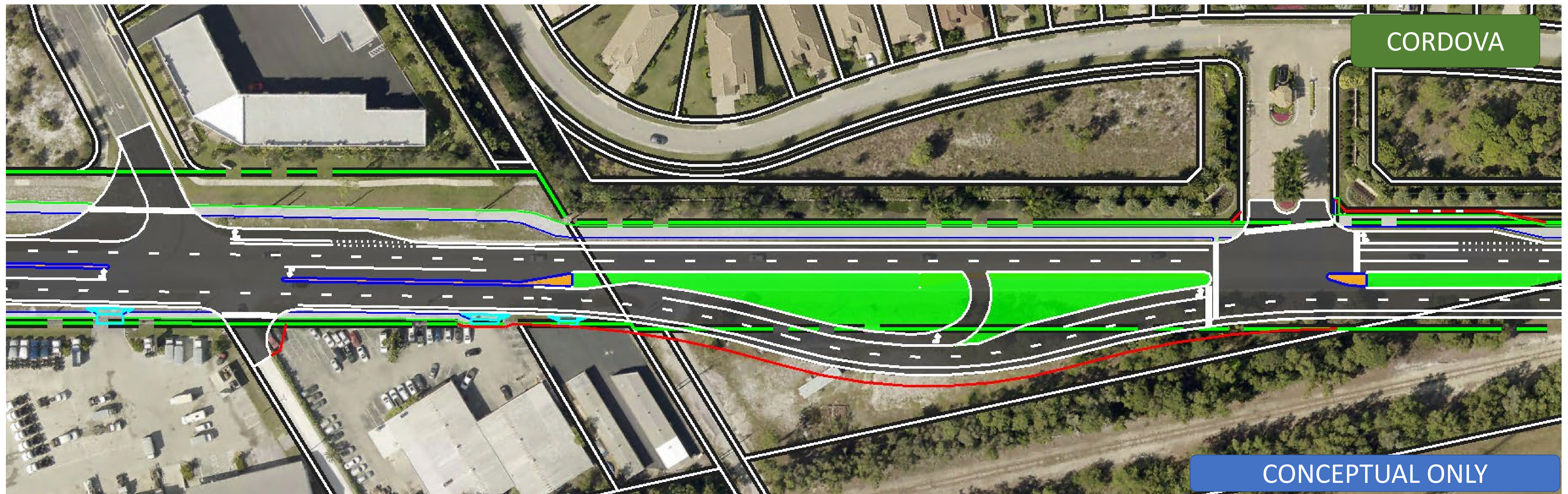
From US 41 to Bonita Beach Road

Financial Project Number 435110-1 & 435347-1 | Collier County & Lee County



## Wide Median/Elliptical Roundabout

NOT RECOMMENDED



CONCEPTUAL ONLY

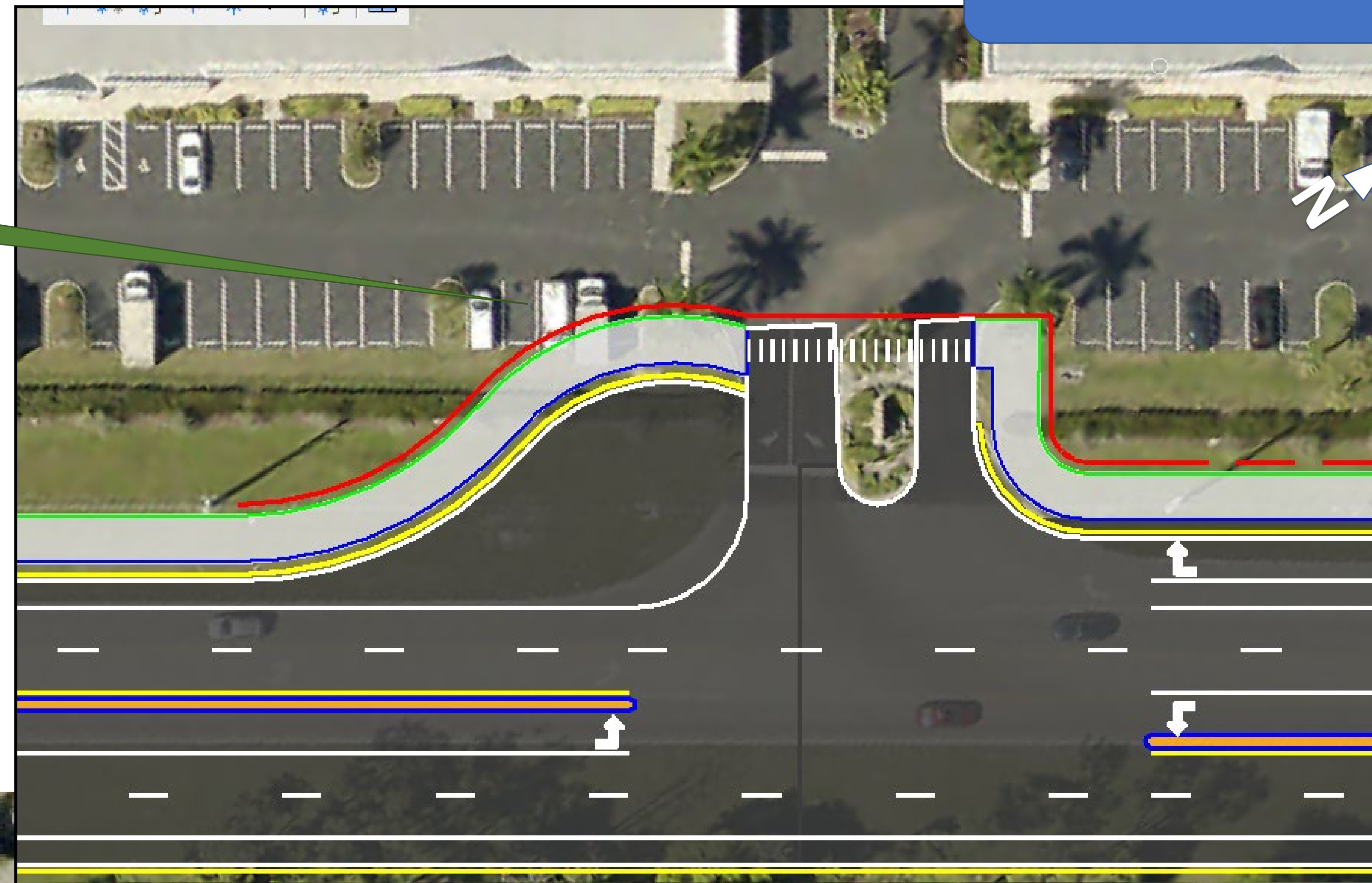
PRO	CON
Commercial/industrial area	Requires full parcel purchase (\$330K+) and business damages
Traffic Calming (25 MPH)	<p>Median openings 300' apart</p> <p>Cordova left turn lane reduced to 225' (285' standard)</p> <p>Reduced safety (additional vehicle conflicts) at unsignalized intersection</p>



## Constitution Plaza bulb-out

IMPACTS TO FOUR PARKING SPACES

POTENTIAL SOLUTION

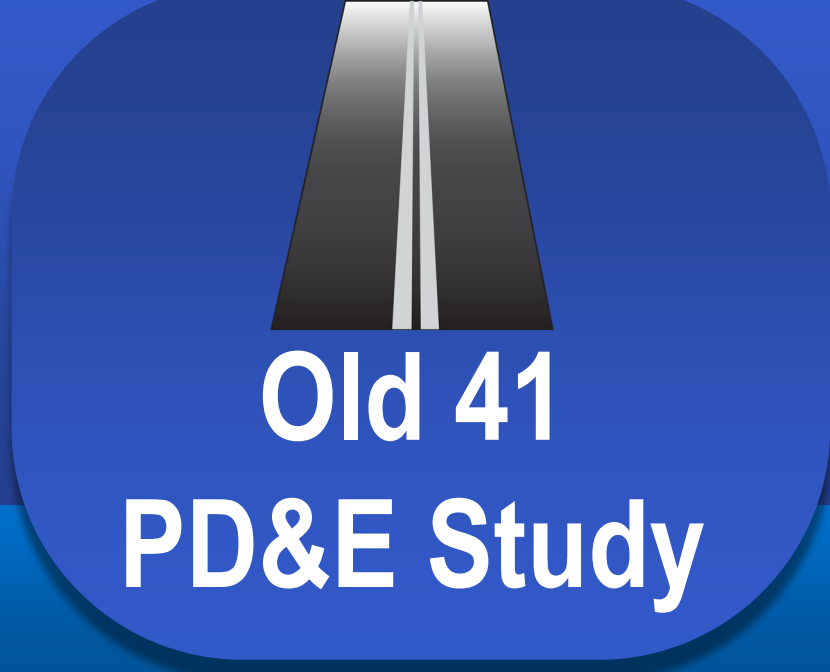


CORDOVA



PRO	CON
Commercial plaza	Parking (four spaces)/entrance/landscaping impacts
	Additional 1 mile roundtrip for trucks making U-turn - Adds traffic to already congested roadways
	Reduced safety (additional vehicle conflicts) at unsignalized intersection





# Old 41 (County Road 887) PD&E Study

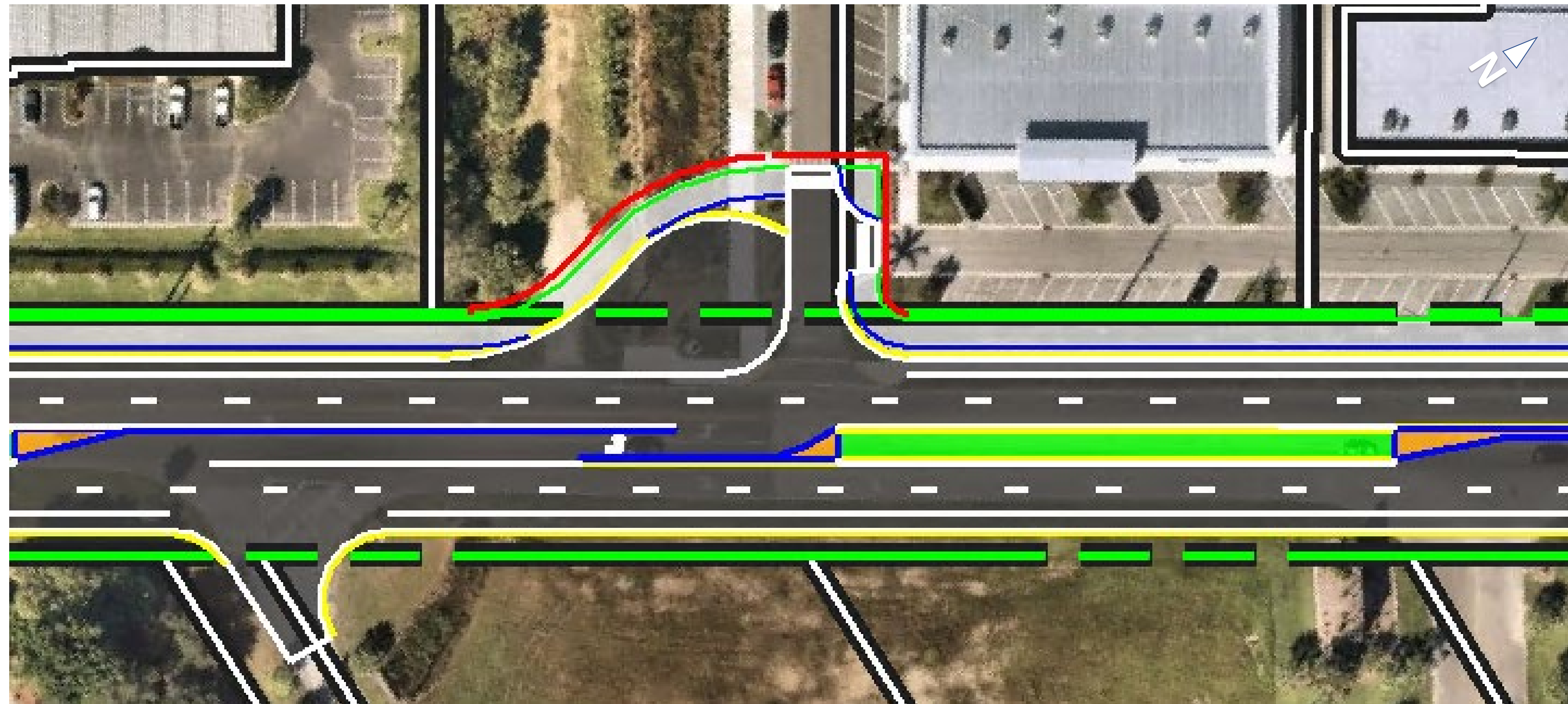
From US 41 to Bonita Beach Road

Financial Project Number 435110-1 & 435347-1 | Collier County & Lee County



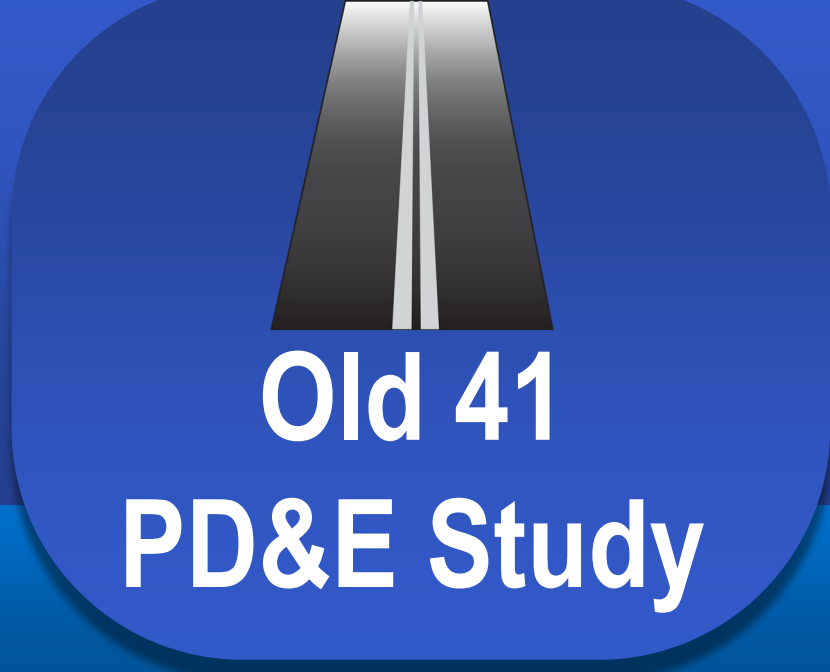
## Causeway Commerce Park bulb-out

POTENTIAL SOLUTION



PRO	CON
Commercial plaza	Stormwater pipe extension needed
No noted opposition following public meeting	Additional 1.4 mile roundtrip for trucks making U-turn - Adds traffic to already congested roadways
	Reduced safety (additional vehicle conflicts) at unsignalized intersection





# Old 41 (County Road 887) PD&E Study

From US 41 to Bonita Beach Road

Financial Project Number 435110-1 & 435347-1 | Collier County & Lee County



## Cordova NB U-Turn Bulb-Out Alternatives

Alternative	Dropped from Further Consideration	Additional Evaluation/Coordination Needed
Cordova bulb-out (workshop concept)	X	
No U-turn accommodations in Lee County	X	
Channel 30 Dr full median opening with driveway relocations	X	
Jughandle	X	
Wide median/elliptical roundabout	X	
Roundabout at New Quadrant Roadway 0.8 miles to north	X	
Constitution Plaza bulb-out 0.5 miles to north		✓
Causeway Commerce Park bulb-out 0.7 miles to north		✓