

How To Comment

This public workshop is being conducted to present the preliminary concepts and provide the opportunity for the public to express their views about the project. While comments about the project are accepted at any time, they must be received or postmarked by May 17, 2024, to be included in the formal workshop record.

Steven A. Andrews

FDOT Project Manager Florida Department of Transportation
801 N. Broadway Avenue MS 1-40
Bartow, FL 33830
863-519-2270
Steven.Andrews@dot.state.fl.us

scan for website



www.swflroads.com/pineislandroad/sharedusepath/

Project Advisory Group (PAG)

FDOT formed and coordinated with a Project Advisory Group (PAG) that consisted of agencies and local stakeholders. FDOT had three interactive meetings with the PAG earlier in the study. These meetings assisted the project team with identifying issues, opportunities, and potential transportation solutions for the corridor. The alternatives that have been advanced in this study were created with assistance from the PAG.

Project Schedule

Task	2020		2021				2022				2023				2024	
	OND	JFM	AMJ	JAS	OND	JFM	AMJ	JAS	OND	JFM	AMJ	JAS	OND	JFM	AMJ	
Notice to Proceed	●															
Local Agency Coordination		→														
Identify Transportation Needs/Data Collection		→													→	
Develop Feasible Alternatives						→									→	
Refine Feasibility Alternatives								→							→	
Public Involvement		→ Responding to Public Inquiries														
Feasibility Study Completion															→	

Preliminary - Subject to Change

Newsletter
 Project Advisory Group Meeting
 Public Workshop

The Florida Department of Transportation may adopt this planning product into the environmental review process, pursuant to Title 23 USC § 168(d)(4), or to the state project development process.

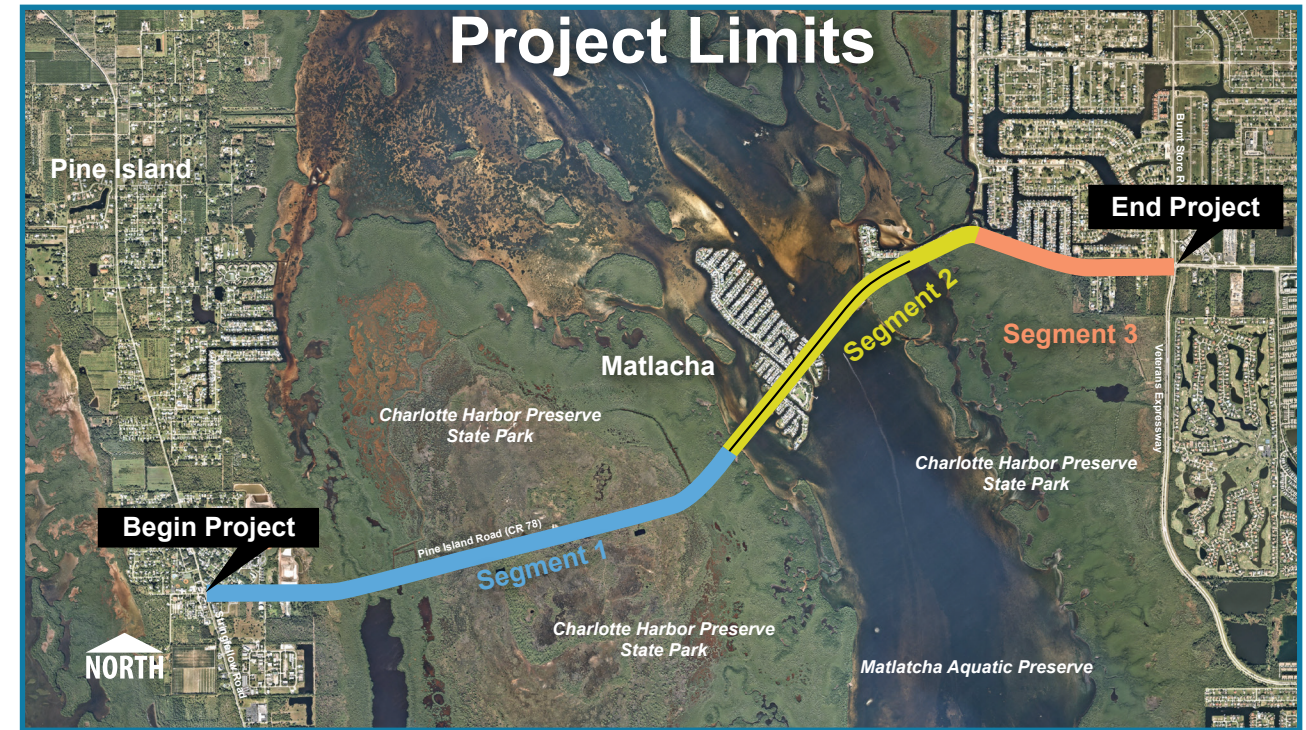
FDOT solicits public participation without regard to race, color, national origin, age, sex, religion, disability, or family status. Persons wishing to express their concerns about Title VI may do so by contacting Cynthia Sykes, District One Title VI Coordinator, 801 N. Broadway Ave., Bartow, Florida 33830, call (863) 519-2287, or via email at Cynthia.Sykes@dot.state.fl.us.

Pine Island Road (CR 78) Shared Use Path Feasibility Study Lee County

Financial Project Identification Number: 436926-1



Public Workshop - May 2024



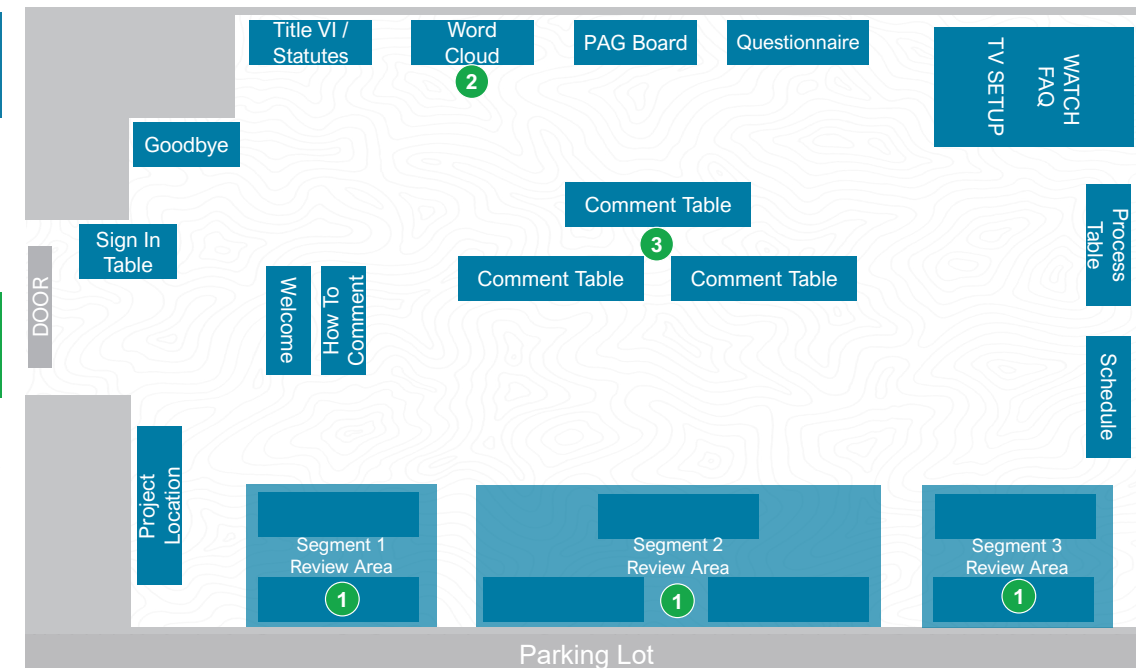
The Florida Department of Transportation (FDOT) appreciates your interest in the Pine Island Road Shared Use Path Feasibility Study on Pine Island Road from Stringfellow Road to Veterans Memorial Parkway in Lee County. This study will evaluate the feasibility of connecting the existing shared use path network and providing a connection between Pine Island, Matlacha, and Cape Coral. In addition, this project will evaluate potential "Complete Streets" elements to be incorporated into the corridor to help provide a safe and viable travel option for all users.

To Do Tonight:

- Review and discuss potential alternatives for Segments 1 - 3.
- Watch FAQs on TV

Get Involved!

- Write your thoughts on each segment's thought wall
- Add your own words to the Word Cloud board
- Leave us your comments!

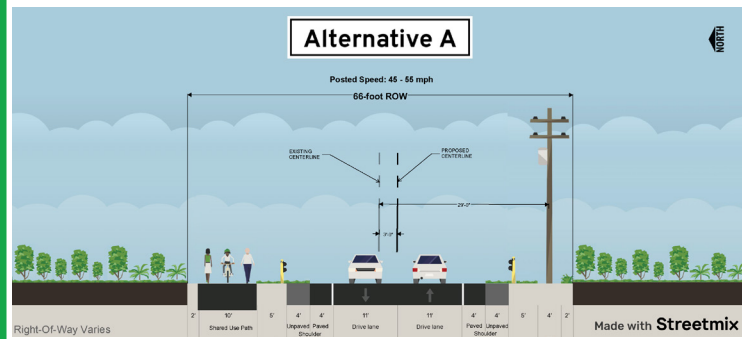


Proposed Alternatives

This is a feasibility study and FDOT is working to determine if a shared use path or “Complete Streets” elements would be possible to include in the study area. At this phase of development, the “no build” alternative remains a viable option.

Segment 1 Proposed Alternatives

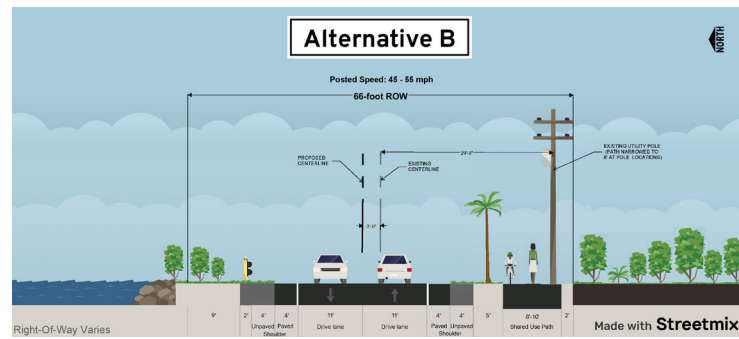
A



What makes this concept unique?

- Guardrail protection for path users
- Path on north side
- 13-foot buffer between SUP & drive lane

B



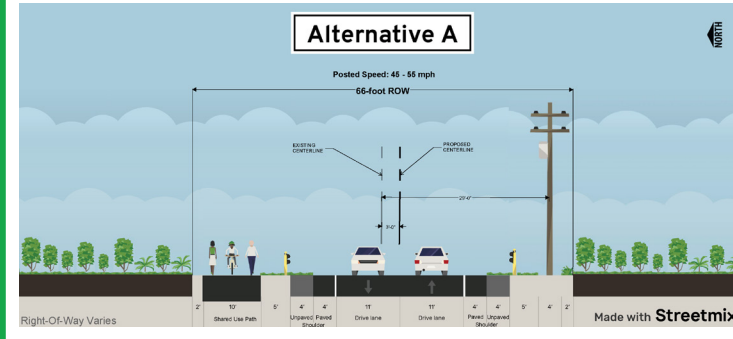
What makes this concept unique?

- 9-foot landscape buffer with 4-foot shoulder
- Path on south side
- Path varies from 8-foot to 10-foot width

Note that Segment 1 and Segment 3 have the same alternatives

Segment 3 Proposed Alternatives

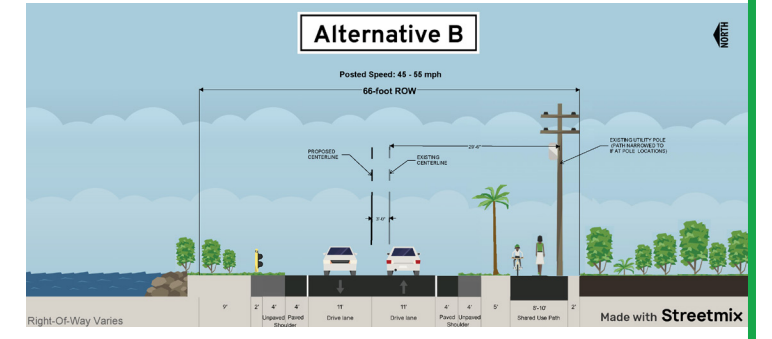
A



What makes this concept unique?

- Guardrail protection for path users
- Path on north side
- 13-foot buffer between SUP & drive lane

B



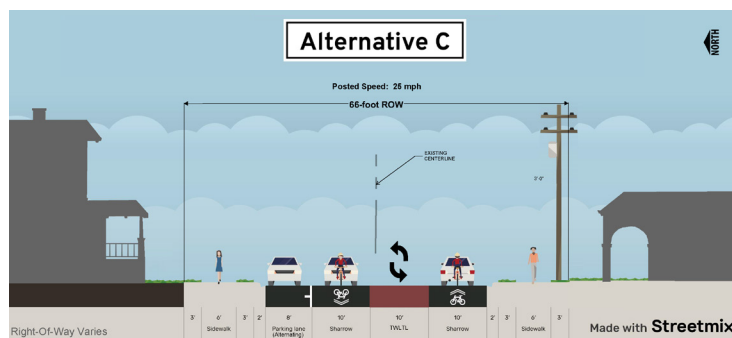
What makes this concept unique?

- 9-foot landscape buffer with 4-foot shoulder
- Path on south side
- Path varies from 8-foot to 10-foot width

Note that Segment 1 and Segment 3 have the same alternatives

Segment 2 Proposed Alternatives

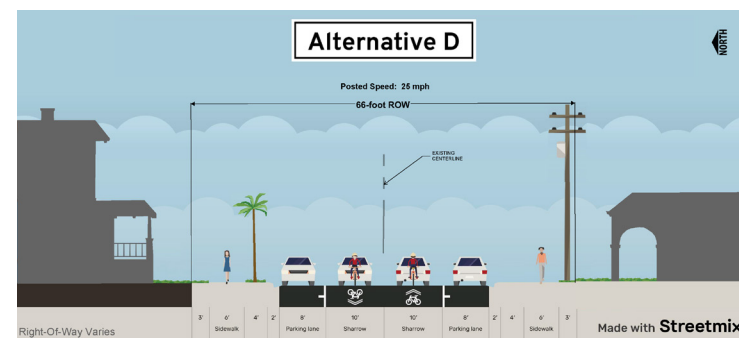
C



What makes this concept unique?

- Sidewalk on both sides of the street
- Parking on one side - alternating to either side of the street
- Two-way left-turn lane (center lane)
- Sharrows - vehicles & bikes share the road

D

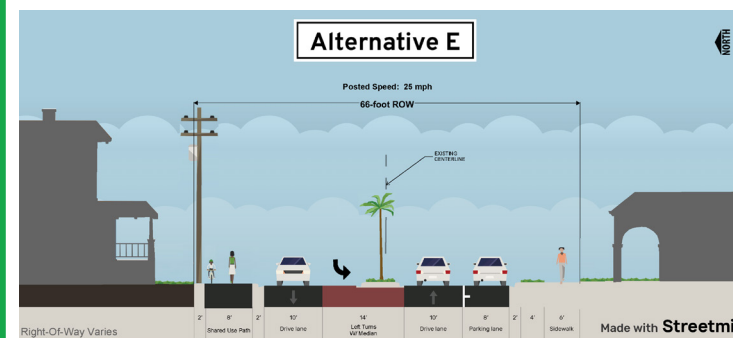


What makes this concept unique?

- Sidewalk on both sides of street
- On-street parking - both sides of street
- Sharrows - vehicles & bikes share the road

Segment 2 Proposed Alternatives

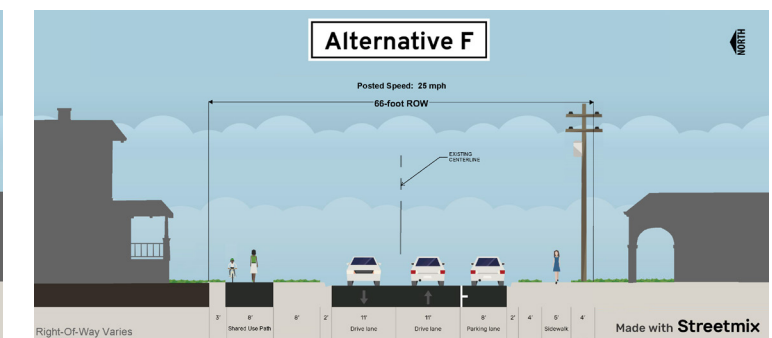
E



What makes this concept unique?

- 8-foot SUP on north side for bicyclists & pedestrians
- Parking on one side - alternating to either side of the street
- Landscaped median with turn lanes

F



What makes this concept unique?

- 8-foot SUP on north side for bicyclists & pedestrians
- 8-foot landscape buffer on north side
- 4-foot landscape buffer on south side
- Parking on one side - alternating to either side of the street