

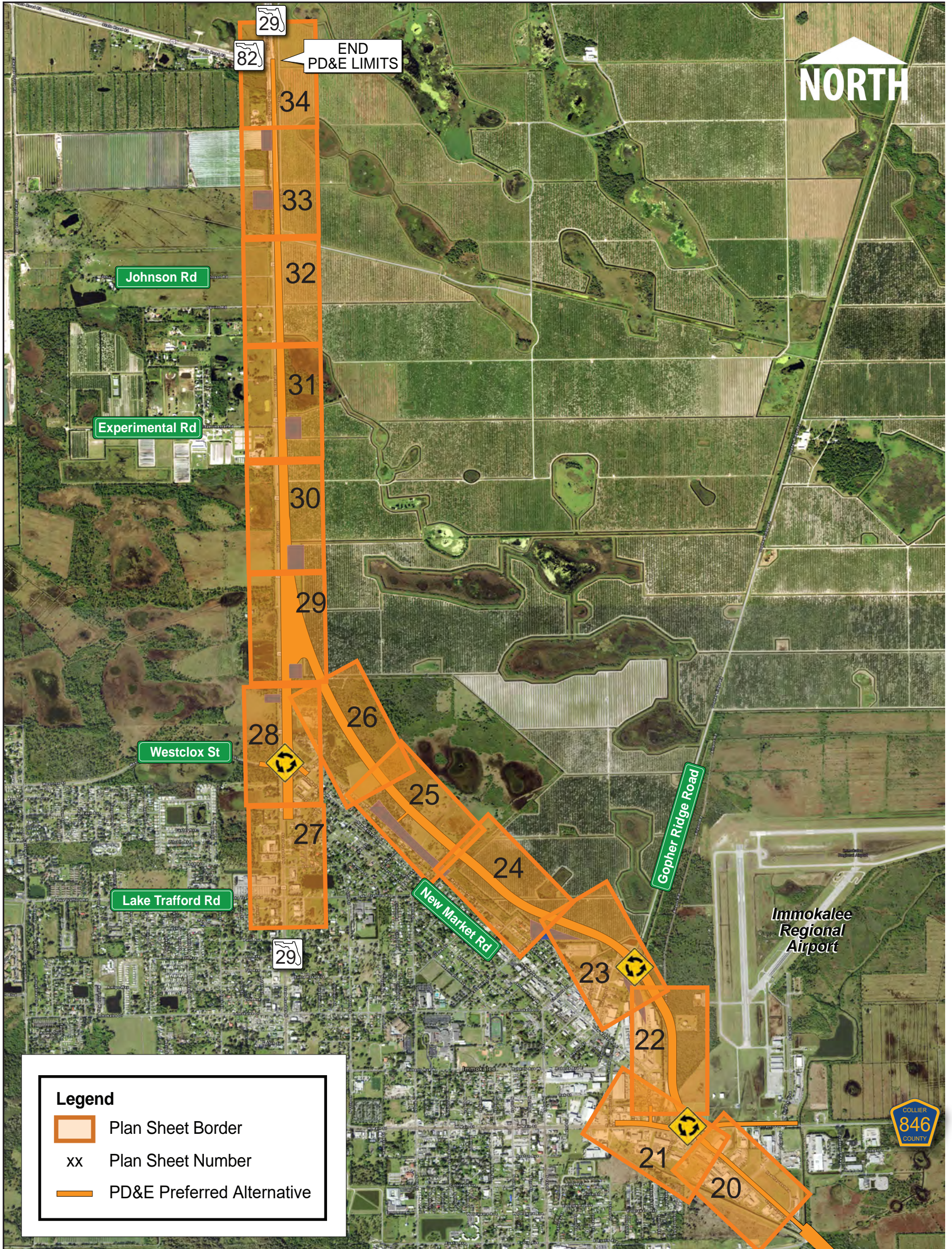


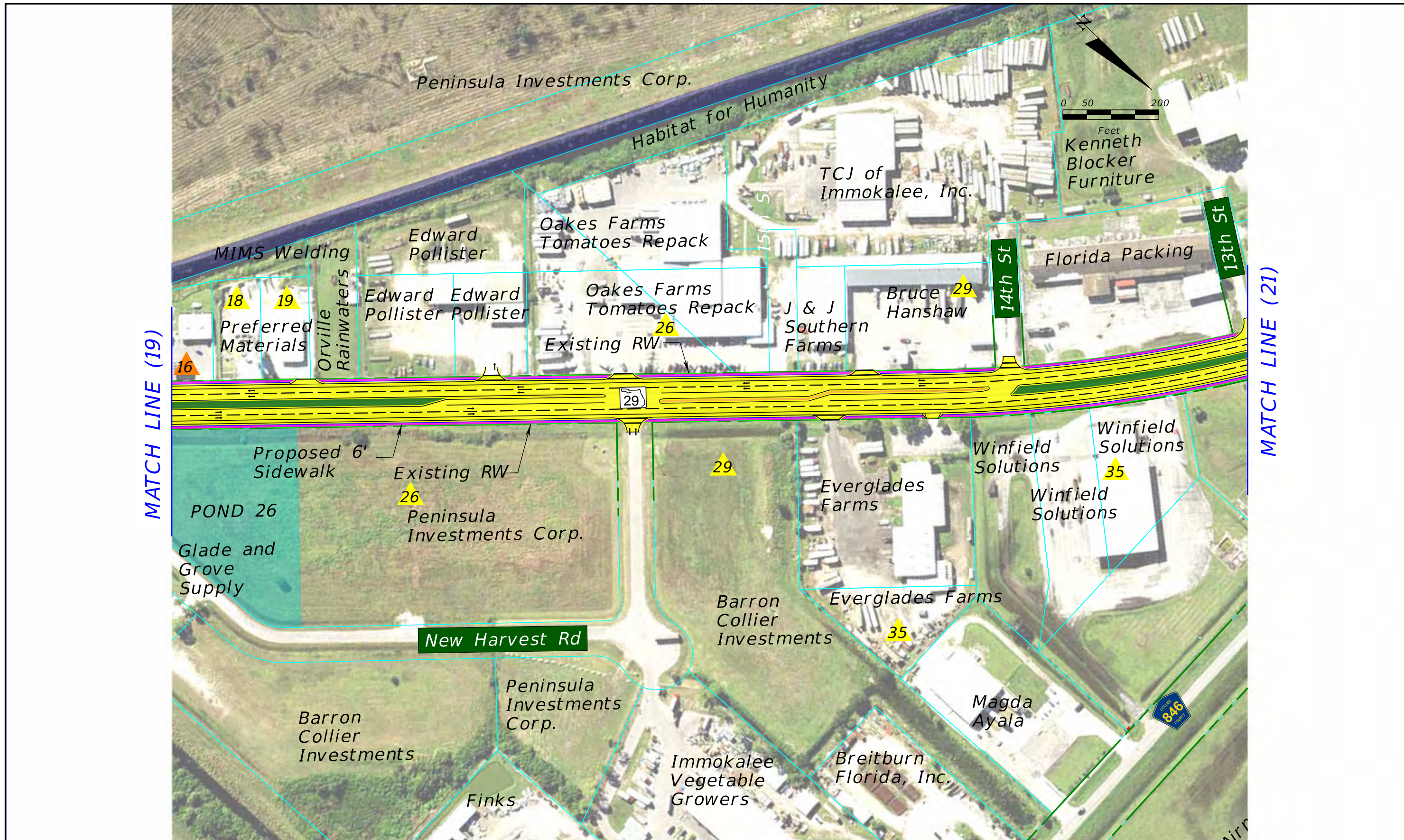
# SR 29 PD&E Study

From Oil Well Road to SR 82

FPID NO: 417540 1 22 01 / FAP NO: 3911 022 P

## Concept Plan Sheets: North of CR 846





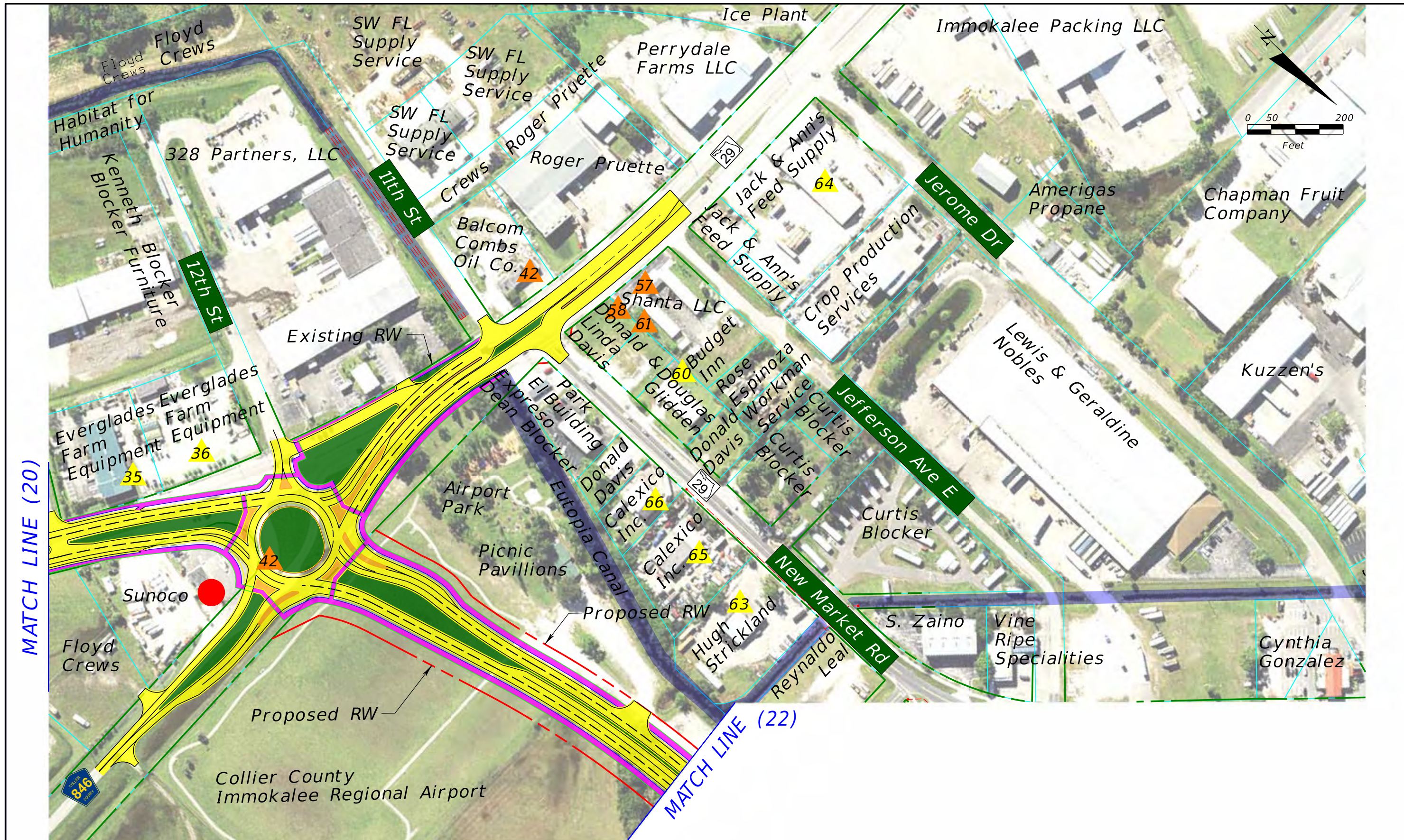
**SR 29 PD&E Study**  
 From Oil Well Road to SR 82  
 FPID NO: 417540 1 22 01 / FAP NO: 3911 022 P

Legend			
Existing Right-of-Way	Proposed Pond	Proposed Pavement	Proposed Guardrail
Parcels	Potential Pond	Proposed Median/Border	Potential Business Relocation
Proposed Right-of-Way	Potential Floodplain Compensation	Proposed Sidewalks/ Shared Use Path	Potential Contamination (Low)
Water/Canal	Traffic Signal	Proposed Traffic Separator	Potential Contamination (Medium or High)
Wetland		Existing Drainage Structure	

H. W. Lochner, Inc.  
 4300 W. Cypress St., Suite 500  
 Tampa, Florida 33607  
 FBPR Certificate of Auth. #894

**Preferred Alternative**

Sheet No.  
**20**



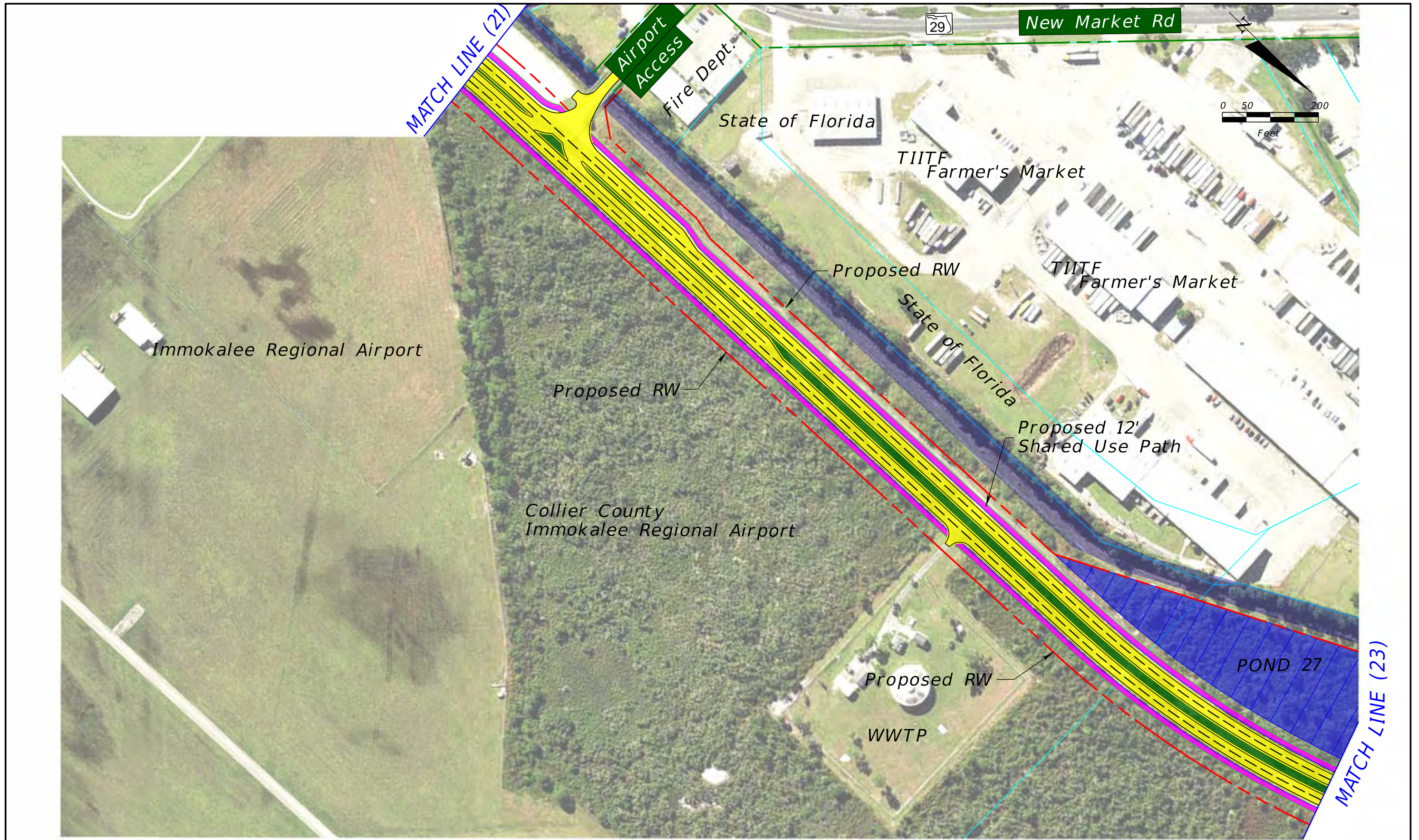
**SR 29 PD&E Study**  
 From Oil Well Road to SR 82  
 FPID NO: 417540 1 22 01 / FAP NO: 3911 022 P

Legend	
Existing Right-of-Way	Proposed Pond
Parcels	Potential Pond
Proposed Right-of-Way	Potential Floodplain Compensation
Water/Canal	Traffic Signal
Wetland	Proposed Pavement
	Proposed Median/Border
	Proposed Sidewalks/ Shared Use Path
	Proposed Traffic Separator
	Existing Drainage Structure
	Proposed Guardrail
	Potential Business Relocation
	Potential Contamination (Low)
	Potential Contamination (Medium or High)

H. W. Lochner, Inc.  
 4300 W. Cypress St., Suite 500  
 Tampa, Florida 33607  
 FBPR Certificate of Auth. #894

**Preferred Alternative**

Sheet No.  
**21**



**SR 29 PD&E Study**  
 From Oil Well Road to SR 82  
 FPID NO: 417540 1 22 01 / FAP NO: 3911 022 P

- Existing Right-of-Way
- Parcels
- - - - Proposed Right-of-Way
- Water/Canal
- Wetland

- ▨ Proposed Pond
- ▨ Potential Pond
- ▨ Potential Floodplain Compensation
- ▨ Traffic Signal

**Legend**

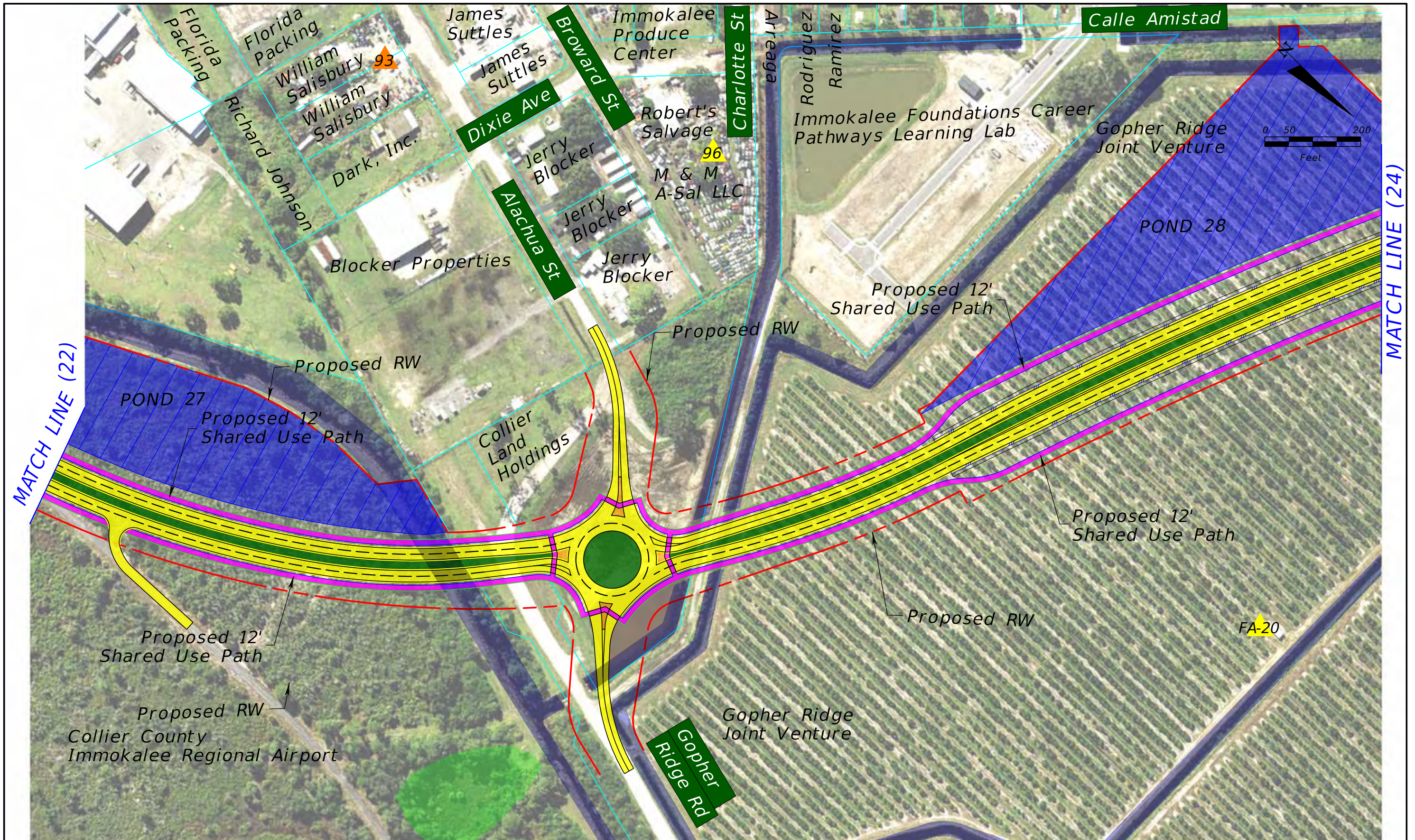
- Proposed Pavement
- Proposed Median/Border
- Proposed Sidewalks/ Shared Use Path
- Proposed Traffic Separator
- - - - Existing Drainage Structure

- Proposed Guardrail
- Potential Business Relocation
- ▲ Potential Contamination (Low)
- ▲ Potential Contamination (Medium or High)

H. W. Lochner, Inc.  
 4300 W. Cypress St., Suite 500  
 Tampa, Florida 33607  
 FBPR Certificate of Auth. #894

**Preferred Alternative**

Sheet No.  
**22**



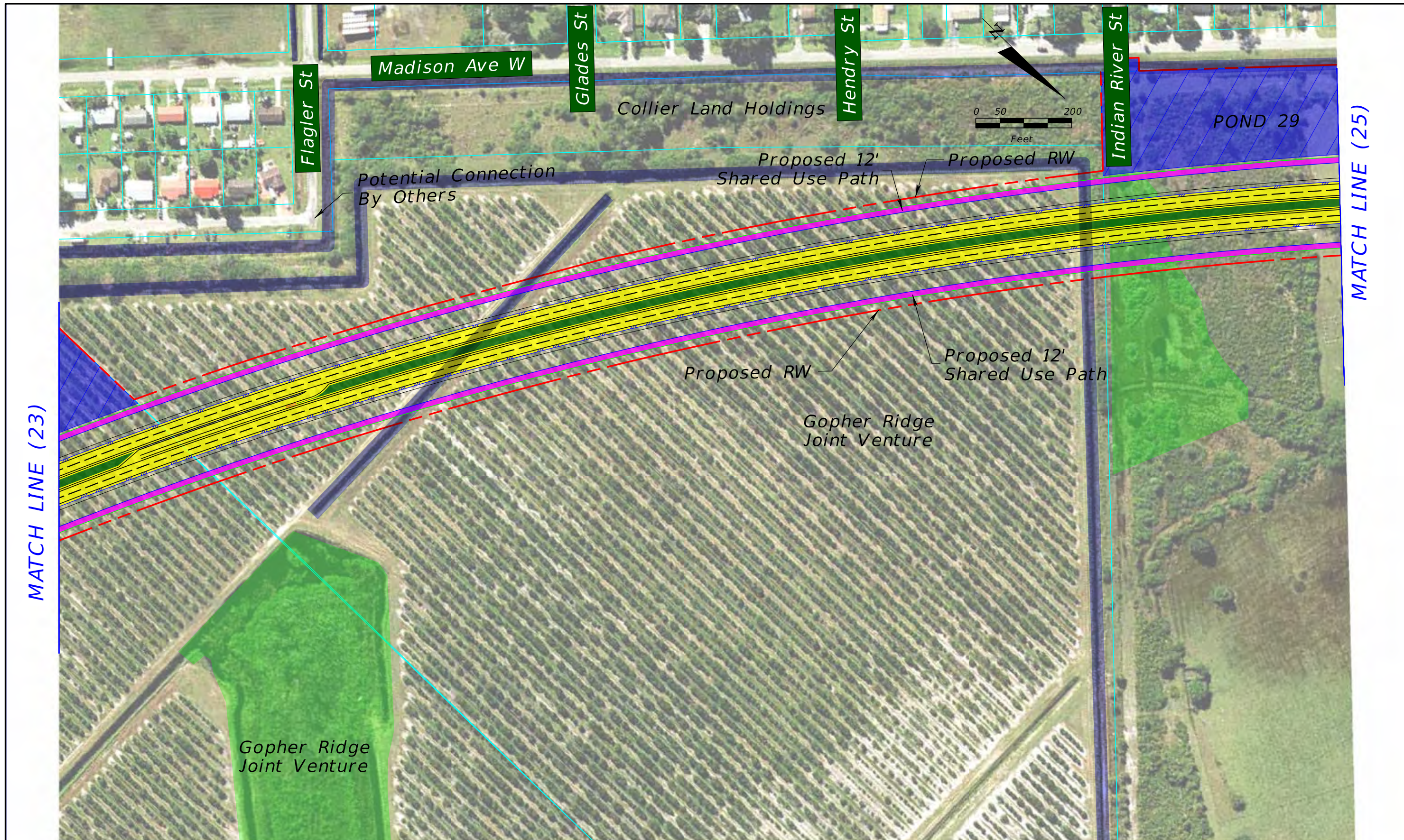
**SR 29 PD&E Study**  
 From Oil Well Road to SR 82  
 FPID NO: 417540 1 22 01 / FAP NO: 3911 022 P

Legend			
Existing Right-of-Way	Proposed Pond	Proposed Pavement	Proposed Guardrail
Parcels	Potential Pond	Proposed Median/Border	Potential Business Relocation
Proposed Right-of-Way	Potential Floodplain Compensation	Proposed Sidewalks/ Shared Use Path	Potential Contamination (Low)
Water/Canal	Wetland	Proposed Traffic Separator	Potential Contamination (Medium or High)
Wetland	Traffic Signal	Existing Drainage Structure	

H. W. Lochner, Inc.  
 4300 W. Cypress St., Suite 500  
 Tampa, Florida 33607  
 FBPR Certificate of Auth. #894

**Preferred Alternative**

Sheet No.  
**23**



**SR 29 PD&E Study**  
 From Oil Well Road to SR 82  
 FPID NO: 417540 1 22 01 / FAP NO: 3911 022 P

- Existing Right-of-Way
- Parcels
- - - - Proposed Right-of-Way
- Water/Canal
- Wetland

- ▨ Proposed Pond
- ▨ Potential Pond
- ▨ Potential Floodplain Compensation
- ⚡ Traffic Signal

**Legend**

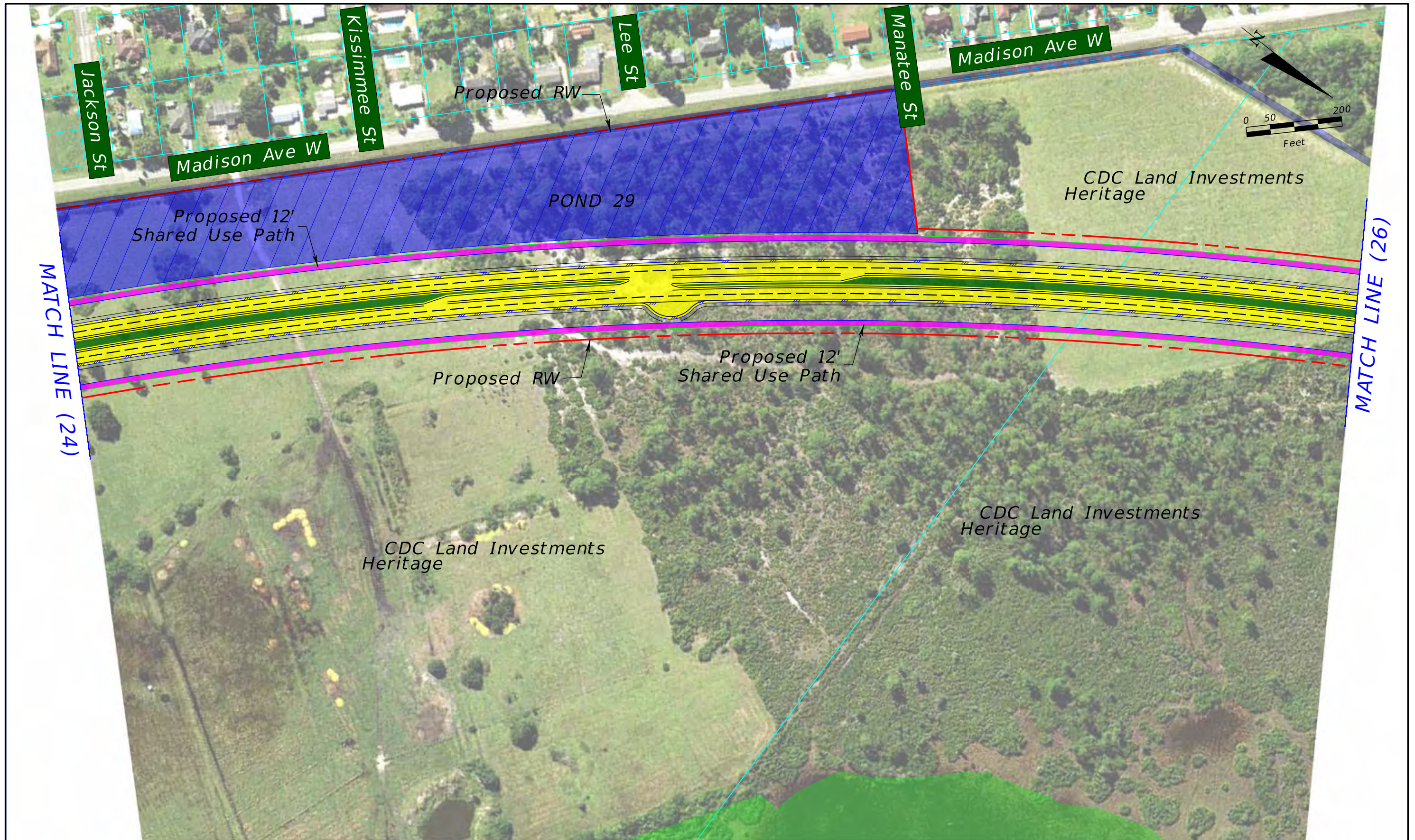
- ▨ Proposed Pavement
- ▨ Proposed Median/Border
- ▨ Proposed Sidewalks/ Shared Use Path
- ▨ Proposed Traffic Separator
- - - - Existing Drainage Structure

- Proposed Guardrail
- Potential Business Relocation
- ▲ Potential Contamination (Low)
- ▲ Potential Contamination (Medium or High)

H. W. Lochner, Inc.  
 4300 W. Cypress St., Suite 500  
 Tampa, Florida 33607  
 FBPR Certificate of Auth. #894

**Preferred Alternative**

Sheet No.  
**24**



**SR 29 PD&E Study**  
 From Oil Well Road to SR 82  
 FPID NO: 417540 1 22 01 / FAP NO: 3911 022 P

- Existing Right-of-Way
- Parcels
- - - - Proposed Right-of-Way
- Water/Canal
- Wetland

- Proposed Pond
- Potential Pond
- Potential Floodplain Compensation
- Traffic Signal

**Legend**

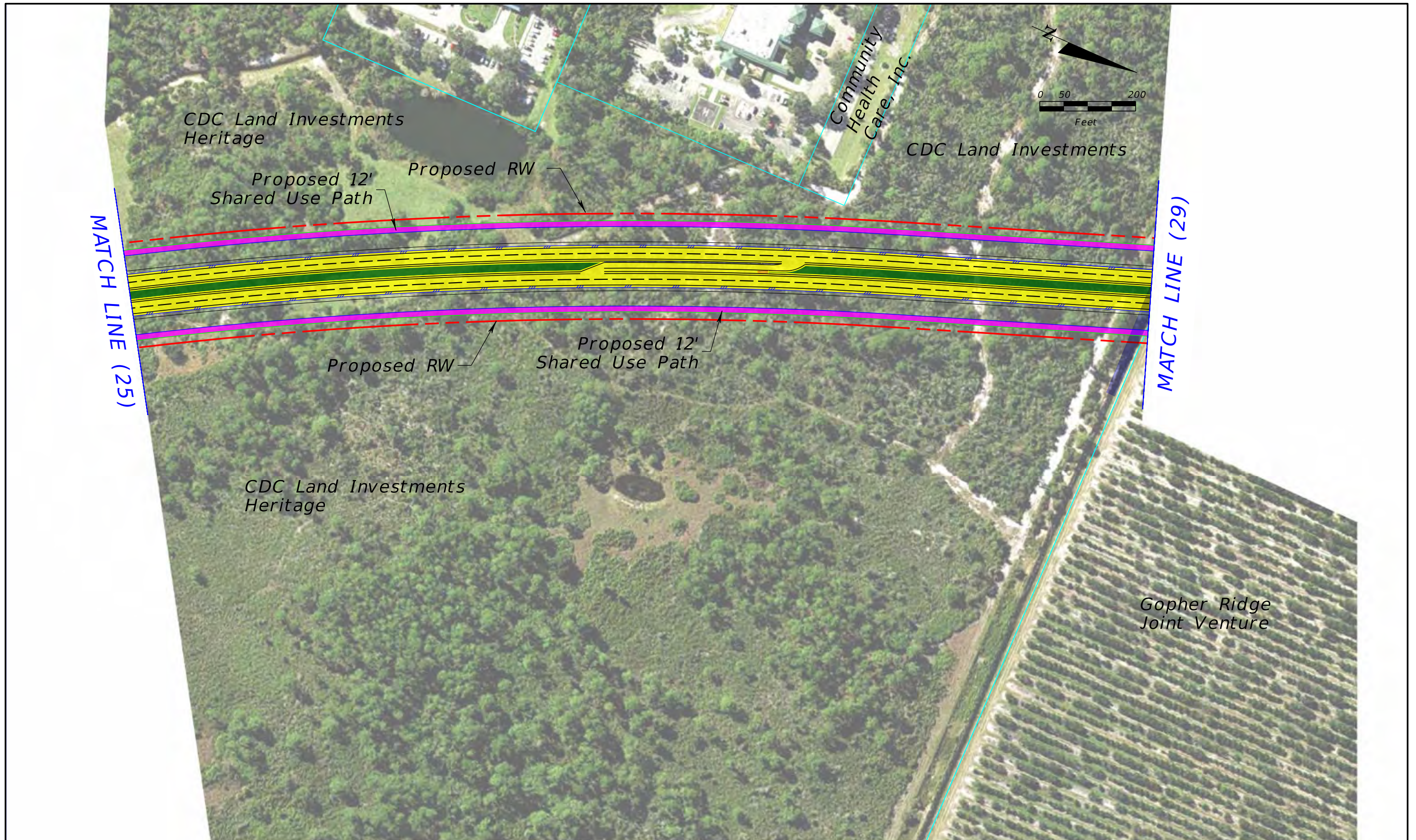
- Proposed Pavement
- Proposed Median/Border
- Proposed Sidewalks/ Shared Use Path
- Proposed Traffic Separator
- - - - Existing Drainage Structure

- Proposed Guardrail
- Potential Business Relocation
- ▲ Potential Contamination (Low)
- ▲ Potential Contamination (Medium or High)

H. W. Lochner, Inc.  
 4300 W. Cypress St., Suite 500  
 Tampa, Florida 33607  
 FBPR Certificate of Auth. #894

**Preferred Alternative**

Sheet No.  
**25**



Legend			
	Existing Right-of-Way		Proposed Pond
	Parcels		Potential Pond
	Proposed Right-of-Way		Potential Floodplain Compensation
	Water/Canal		Proposed Pavement
	Wetland		Proposed Median/Border
	Proposed Pavement		Proposed Sidewalks/ Shared Use Path
	Proposed Traffic Separator		Proposed Guardrail
	Existing Drainage Structure		Potential Business Relocation
	Potential Contamination (Low)		Potential Contamination (Low)
	Potential Contamination (Medium or High)		Potential Contamination (Medium or High)

H. W. Lochner, Inc.  
 4300 W. Cypress St., Suite 500  
 Tampa, Florida 33607  
 FBPR Certificate of Auth. #894

**Preferred Alternative**





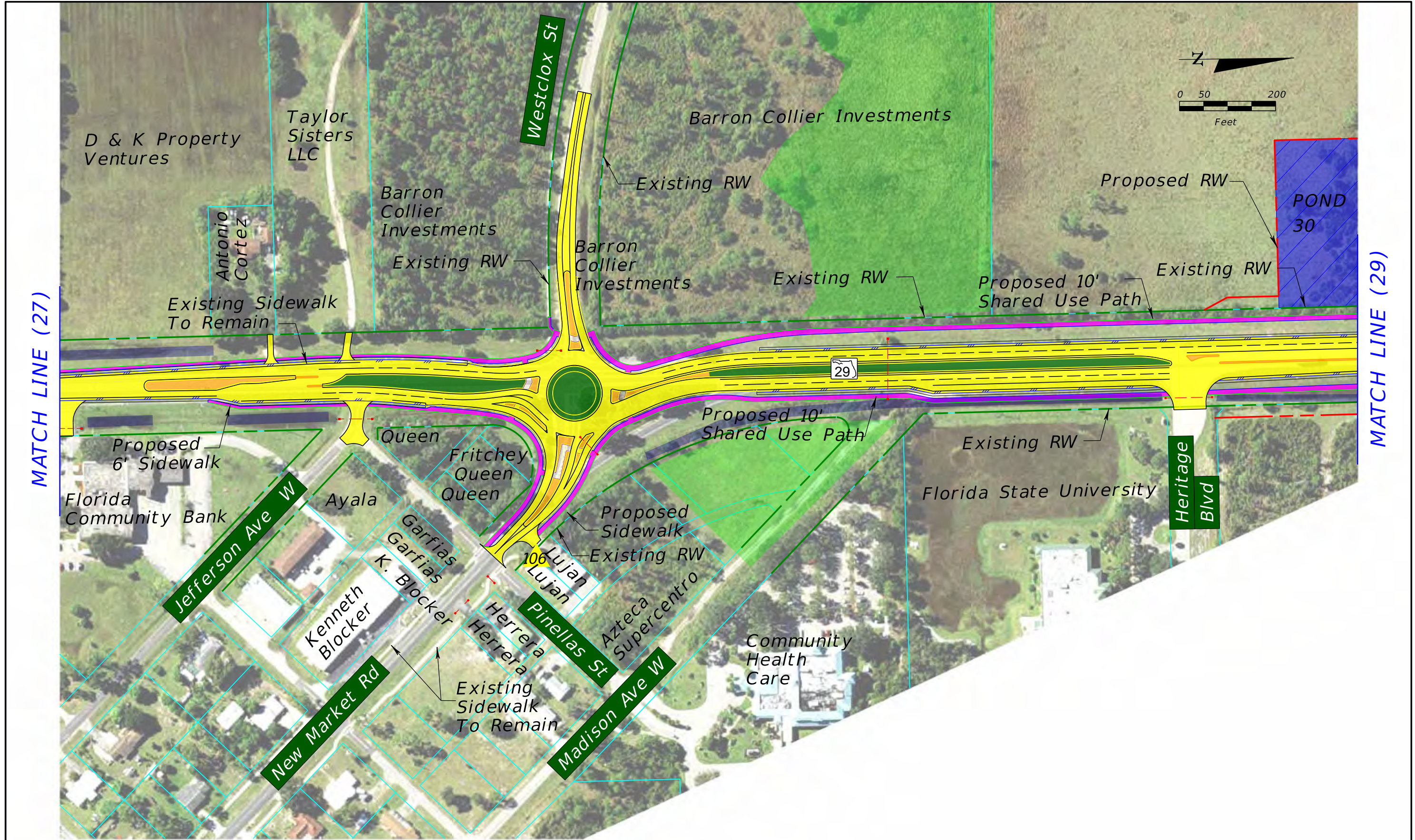
**SR 29 PD&E Study**  
 From Oil Well Road to SR 82  
 FPID NO: 417540 1 22 01 / FAP NO: 3911 022 P

- Legend**
- Existing Right-of-Way
  - Parcels
  - - - - Proposed Right-of-Way
  - Water/Canal
  - Wetland
  - ▨ Proposed Pond
  - ▨ Potential Pond
  - ▨ Potential Floodplain Compensation
  - ⚡ Traffic Signal
  - Proposed Pavement
  - Proposed Median/Border
  - Proposed Sidewalks/ Shared Use Path
  - Proposed Traffic Separator
  - - - - Existing Drainage Structure
  - Proposed Guardrail
  - Potential Business Relocation
  - ▲ Potential Contamination (Low)
  - ▲ Potential Contamination (Medium or High)

H. W. Lochner, Inc.  
 4300 W. Cypress St., Suite 500  
 Tampa, Florida 33607  
 FBPR Certificate of Auth. #894

**Preferred Alternative**

Sheet No.  
**27**



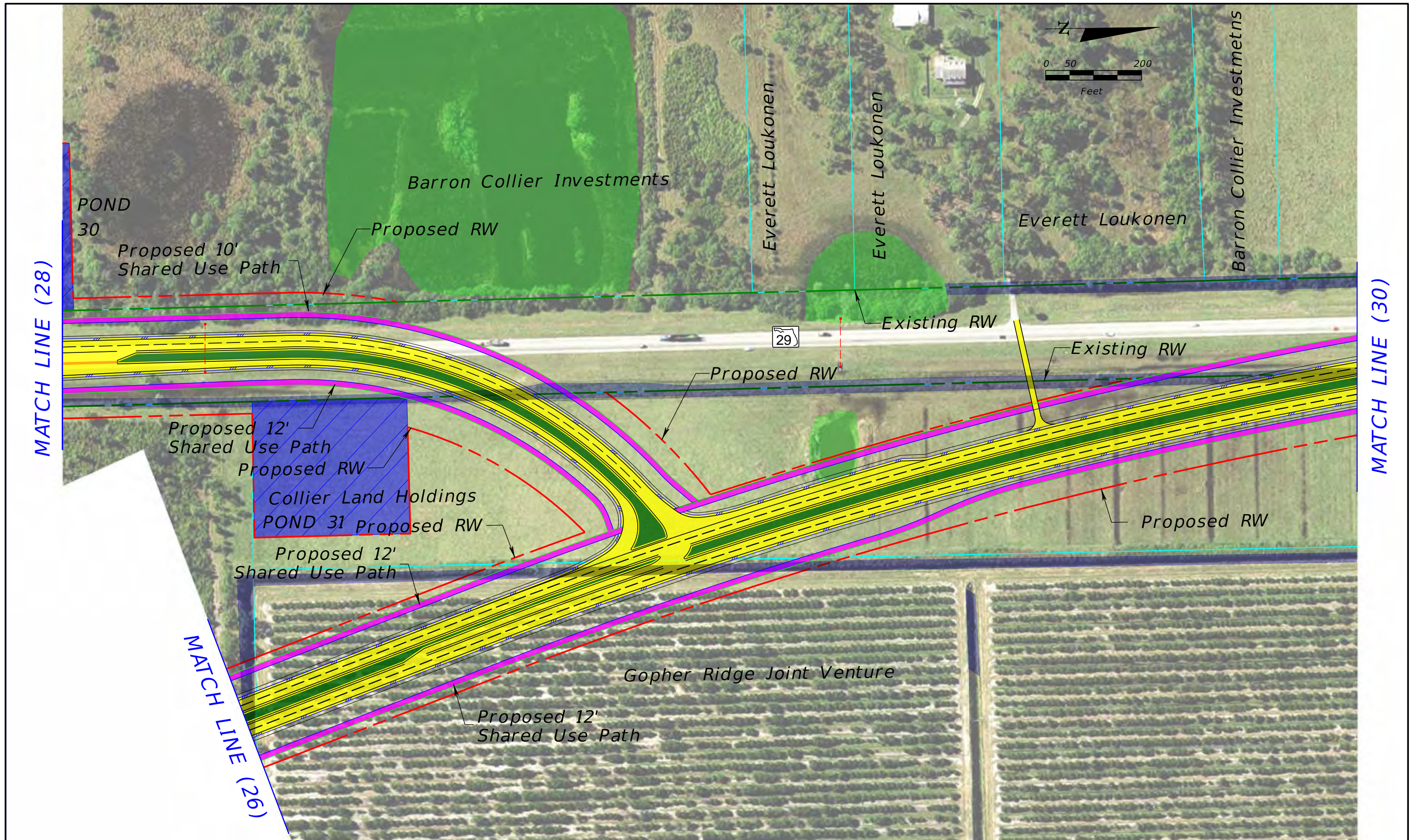
**SR 29 PD&E Study**  
 From Oil Well Road to SR 82  
 FPID NO: 417540 1 22 01 / FAP NO: 3911 022 P

Legend	
Existing Right-of-Way	Proposed Pond
Parcels	Potential Pond
Proposed Right-of-Way	Potential Floodplain Compensation
Water/Canal	Traffic Signal
Wetland	Proposed Pavement
	Proposed Median/Border
	Proposed Sidewalks/ Shared Use Path
	Proposed Traffic Separator
	Existing Drainage Structure
	Proposed Guardrail
	Potential Business Relocation
	Potential Contamination (Low)
	Potential Contamination (Medium or High)

H. W. Lochner, Inc.  
 4300 W. Cypress St., Suite 500  
 Tampa, Florida 33607  
 FBPR Certificate of Auth. #894

**Preferred Alternative**

Sheet No.  
**28**



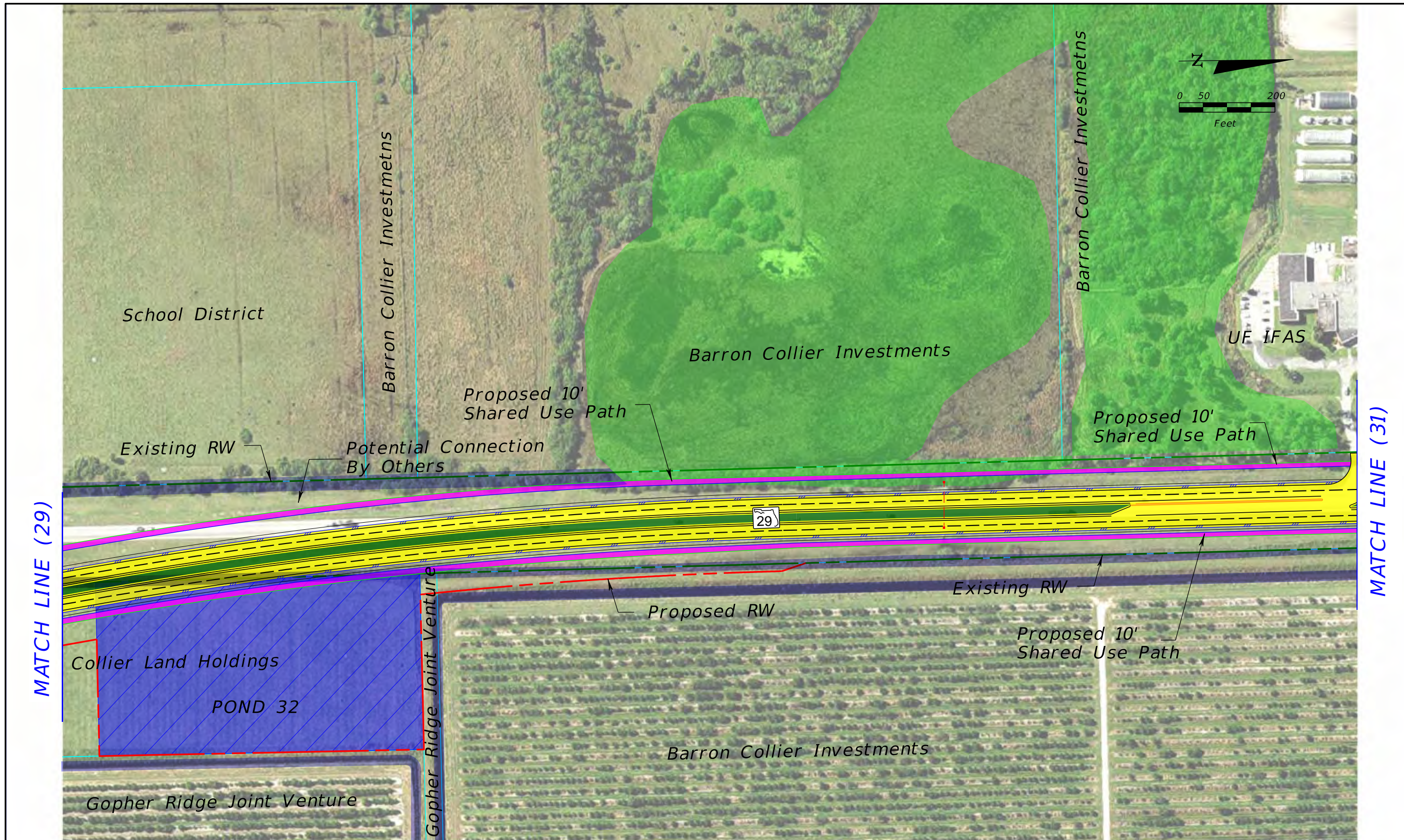
**SR 29 PD&E Study**  
 From Oil Well Road to SR 82  
 FPID NO: 417540 1 22 01 / FAP NO: 3911 022 P

Legend			
	Existing Right-of-Way		Proposed Pond
	Parcels		Potential Pond
	Proposed Right-of-Way		Potential Floodplain Compensation
	Water/Canal		Traffic Signal
	Wetland		Proposed Pavement
			Proposed Median/Border
			Proposed Sidewalks/Shared Use Path
			Proposed Traffic Separator
			Existing Drainage Structure
			Proposed Guardrail
			Potential Business Relocation
			Potential Contamination (Low)
			Potential Contamination (Medium or High)

H. W. Lochner, Inc.  
 4300 W. Cypress St., Suite 500  
 Tampa, Florida 33607  
 FBPR Certificate of Auth. #894

**Preferred Alternative**

Sheet No.  
**29**



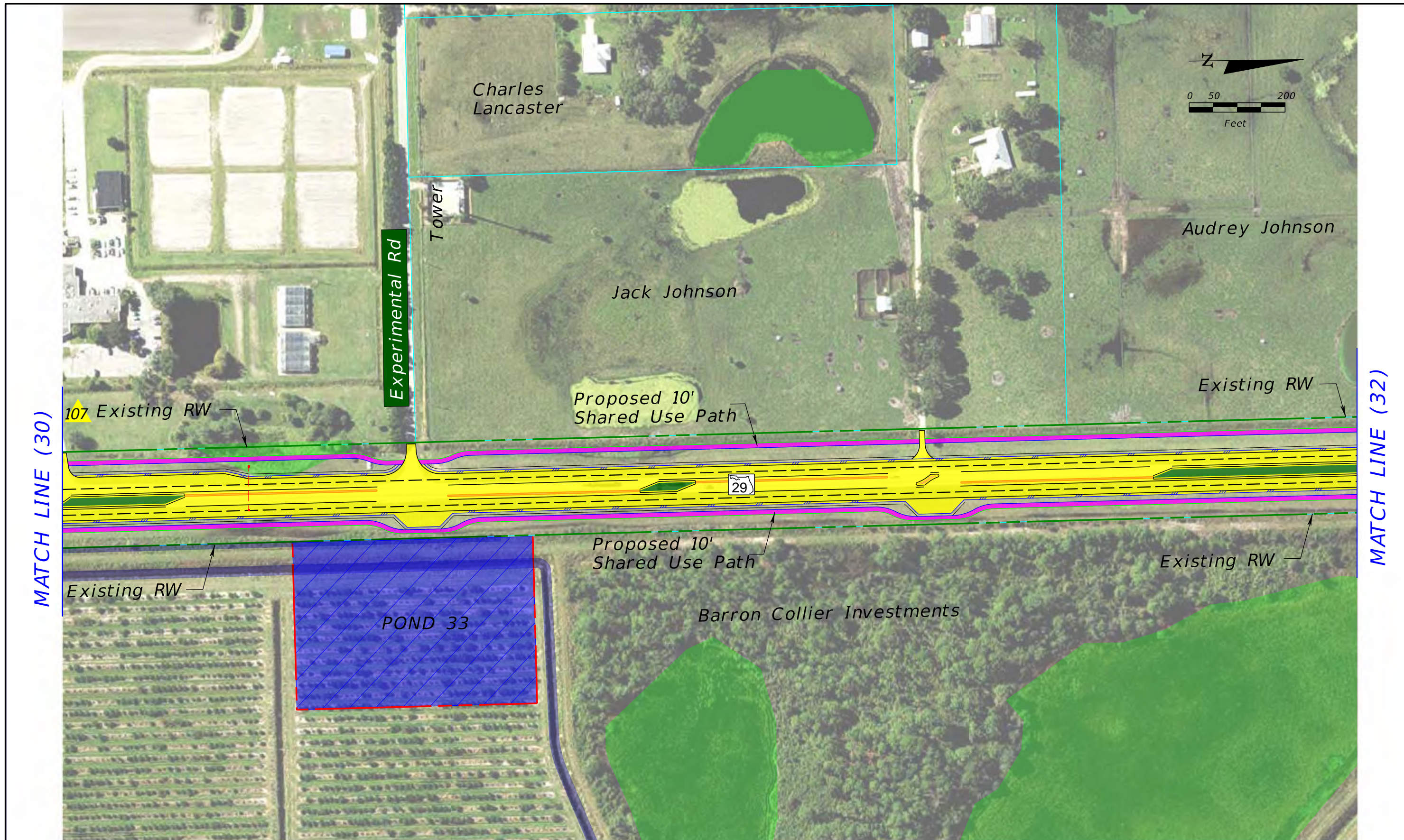
**SR 29 PD&E Study**  
 From Oil Well Road to SR 82  
 FPID NO: 417540 1 22 01 / FAP NO: 3911 022 P

Legend	
Existing Right-of-Way	Proposed Pond
Parcels	Potential Pond
Proposed Right-of-Way	Potential Floodplain Compensation
Water/Canal	Traffic Signal
Wetland	Proposed Pavement
	Proposed Median/Border
	Proposed Sidewalks/Shared Use Path
	Proposed Traffic Separator
	Existing Drainage Structure
	Proposed Guardrail
	Potential Business Relocation
	Potential Contamination (Low)
	Potential Contamination (Medium or High)

H. W. Lochner, Inc.  
 4300 W. Cypress St., Suite 500  
 Tampa, Florida 33607  
 FBPR Certificate of Auth. #894

**Preferred Alternative**

Sheet No.  
**30**



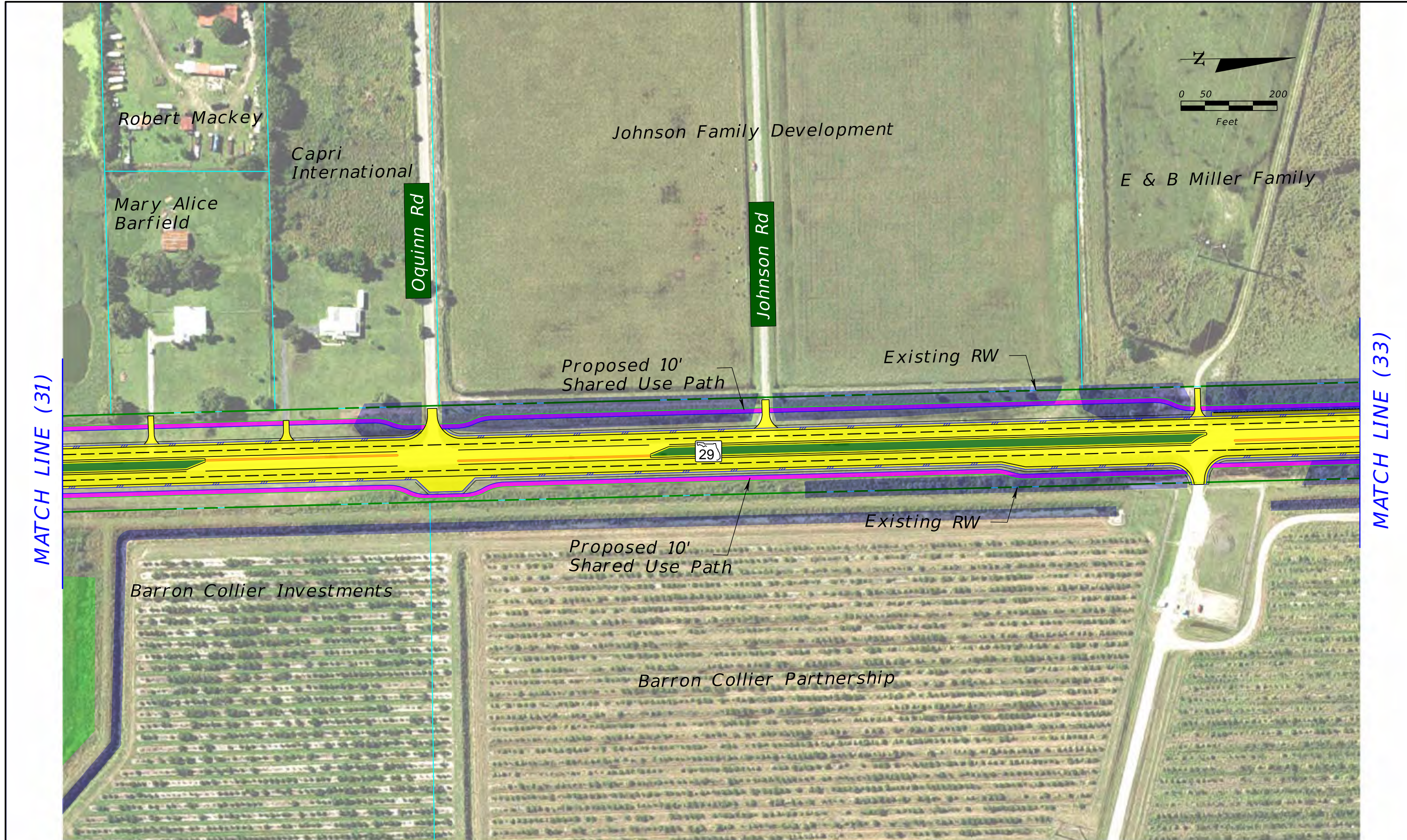
**SR 29 PD&E Study**  
 From Oil Well Road to SR 82  
 FPID NO: 417540 1 22 01 / FAP NO: 3911 022 P

Legend			
Existing Right-of-Way	Proposed Pond	Proposed Pavement	Proposed Guardrail
Parcels	Potential Pond	Proposed Median/Border	Potential Business Relocation
Proposed Right-of-Way	Potential Floodplain Compensation	Proposed Sidewalks/ Shared Use Path	Potential Contamination (Low)
Water/Canal	Traffic Signal	Proposed Traffic Separator	Potential Contamination (Medium or High)
Wetland		Existing Drainage Structure	

H. W. Lochner, Inc.  
 4300 W. Cypress St., Suite 500  
 Tampa, Florida 33607  
 FBPR Certificate of Auth. #894

**Preferred Alternative**

Sheet No.  
**31**



**SR 29 PD&E Study**  
 From Oil Well Road to SR 82  
 FPID NO: 417540 1 22 01 / FAP NO: 3911 022 P

Legend			
	Existing Right-of-Way		Proposed Pond
	Parcels		Potential Pond
	Proposed Right-of-Way		Potential Floodplain Compensation
	Water/Canal		Traffic Signal
	Wetland		Proposed Pavement
			Proposed Median/Border
			Proposed Sidewalks/Shared Use Path
			Proposed Traffic Separator
			Existing Drainage Structure
			Proposed Guardrail
			Potential Business Relocation
			Potential Contamination (Low)
			Potential Contamination (Medium or High)

H. W. Lochner, Inc.  
 4300 W. Cypress St., Suite 500  
 Tampa, Florida 33607  
 FBPR Certificate of Auth. #894

**Preferred Alternative**

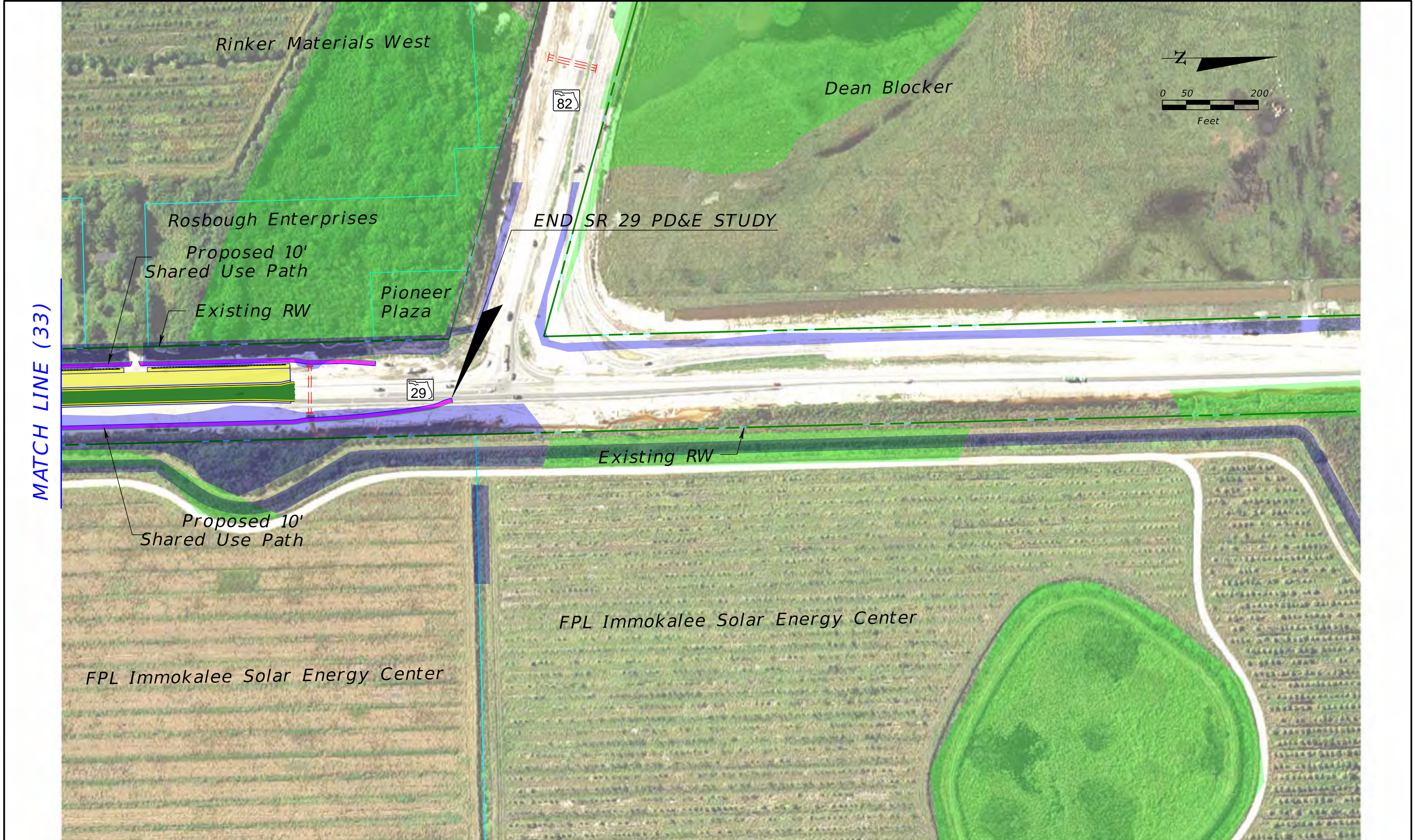
Sheet No.  
**32**



Legend			
Existing Right-of-Way	Proposed Pond	Proposed Pavement	Proposed Guardrail
Parcels	Potential Pond	Proposed Median/Border	Potential Business Relocation
Proposed Right-of-Way	Potential Floodplain Compensation	Proposed Sidewalks/Shared Use Path	Potential Contamination (Low)
Water/Canal	Traffic Signal	Proposed Traffic Separator	Potential Contamination (Medium or High)
Wetland		Existing Drainage Structure	

H. W. Lochner, Inc.  
 4300 W. Cypress St., Suite 500  
 Tampa, Florida 33607  
 FBPR Certificate of Auth. #894

**Preferred Alternative**



**SR 29 PD&E Study**  
 From Oil Well Road to SR 82  
 FPID NO: 417540 1 22 01 / FAP NO: 3911 022 P

Legend			
	Existing Right-of-Way		Proposed Pond
	Parcels		Potential Pond
	Proposed Right-of-Way		Potential Floodplain Compensation
	Water/Canal		Proposed Pavement
	Wetland		Proposed Median/Border
	Proposed Sidewalks/Shared Use Path		Proposed Guardrail
	Proposed Traffic Separator		Potential Business Relocation
	Existing Drainage Structure		Potential Contamination (Low)
	Traffic Signal		Potential Contamination (Medium or High)

H. W. Lochner, Inc.  
 4300 W. Cypress St., Suite 500  
 Tampa, Florida 33607  
 FBPR Certificate of Auth. #894

**Preferred Alternative**

Sheet No.  
**34**