

SR 29 Project Development & Environment Study

From Oil Well Road to SR 82
Collier County, FL

Financial Project ID Number: 417540-1-22-01
Federal Aid Project Number: 3911 022P

PUBLIC INVOLVEMENT PLAN

In accordance with Part 1, Chapter 11 of the Project Development and Environment (PD&E) Manual, this Public Involvement Plan is submitted to the manager of the District office in charge of PD&E studies as appropriate based on District organizational structure for his/her review and approval.

Submitted By: Bill Howell, P.E.
Project Manager

H.W. Lochner, Inc.

Date: July 20, 2007 Revised March 8, 2018

The environmental review, consultation, and other actions required by applicable federal environmental laws for this project are being, or have been, carried-out by the Florida Department of Transportation (FDOT) pursuant to 23 U.S.C. § 327 and a Memorandum of Understanding dated December 14, 2016, and executed by the Federal Highway Administration and FDOT.

Approved by: Gwen G. Pipkin
Gwen G. Pipkin, FDOT Project Manager

Date: 4-3-18

Table of Contents

Section	Page
I. Description of Proposed Improvements	1
II. Project Background	3
III. Project Goals	3
IV. Identification of Affected Officials and Agencies	4
V. Identification of Affected Communities and Stakeholders	6
VI. Outreach Activities	7
VII. Public Outreach Schedule	11
VIII. Coordination with Collier County	11
IX. Public Hearing	11
X. Public Hearing Follow-Up	13
XI. Public Involvement During Design	14

Appendix A: Public Involvement Program Agencies Mailing List

Appendix B: Public Involvement Program Elected and Appointed Officials Mailing List

Appendix C: Census Data

Appendix D: Property Owner Mailing Map and Address List

PUBLIC INVOLVEMENT PLAN

The purpose of this Public Involvement Plan (PIP) is to assist in providing information to and obtaining input from concerned citizens, agencies, private groups (residential/business), and governmental entities. The overall goal of this plan is to help ensure that the study reflects the values and needs of the communities it is designed to benefit. A schedule of events and a list of documentation exhibiting compliance with these procedures are included.

This plan is in compliance with the Florida Department of Transportation's (FDOT) Project Development and Environment (PD&E) Manual, Part 1, Chapter 11 (June 2017).

I. Description of Proposed Improvements

Project Name: SR 29 PD&E Study

Federal Aid Project Number: 3911 022P

Financial Project ID: 417540-1-22-01

Project Limits: This project includes evaluating existing SR 29 from south of Oil Well Road to south of SR 82 and evaluating alternatives that bypass downtown Immokalee in Collier County.

Proposed Activity: The Florida Department of Transportation is conducting a Project Development and Environment Study for SR 29 in Collier County. The proposed activity is to provide documented information necessary for FDOT to reach a decision on the type, design, and location of the widening of the existing SR 29 to four lanes, as well as the study of new alternatives that would bypass downtown Immokalee. No improvements are proposed to existing SR 29 between Immokalee Road and New Market Road North.

Class of Action: Environmental Assessment (EA)

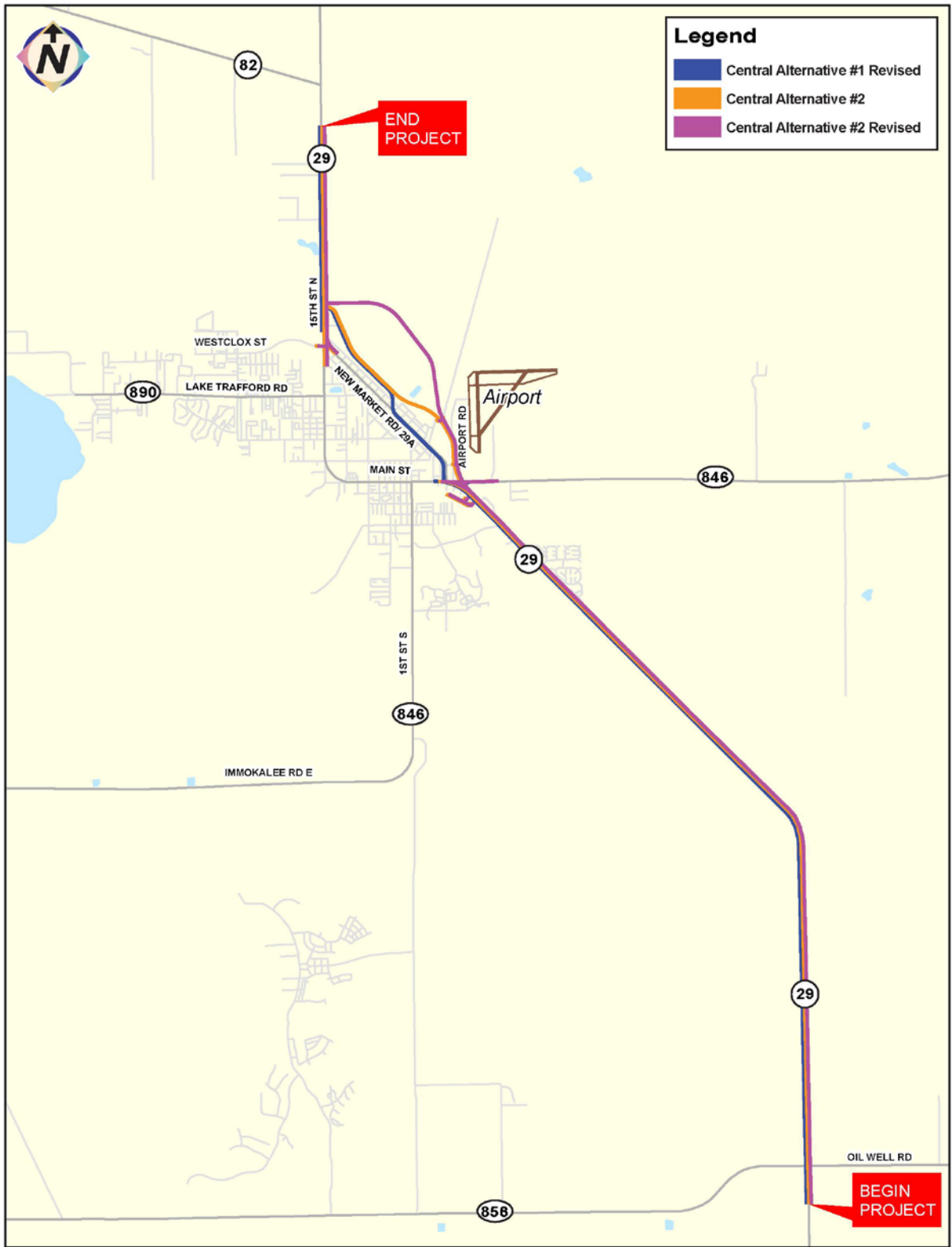


Figure 1
Project Location Map

Project Contact Information

For additional information regarding this project, contact:

Gwen Pipkin
FDOT Project Manager
801 N. Broadway Avenue
Bartow, FL 33831
Telephone: 863-519-2375
Email: Gwen.Pipkin@dot.state.fl.us

Bill Howell, P.E.
Consultant Project Manager
H.W. Lochner, Inc.
4350 W. Cypress Street, Suite
800 Tampa, FL 33607
Telephone: 813-357-3750 Email:
bhowell@hwlochner.com

II. Project Background

The project began in 2007 to develop and evaluate alternative concepts to widen this existing two-lane segment of SR 29 to four lanes and consider potential corridors that would bypass downtown Immokalee. The existing roadway network needs improvement because of continuing population and employment growth in Immokalee. In 2008, based on stakeholder comments, the project study area was expanded.

Early in the study process, FDOT conducted a corridor analysis in which four corridors were selected for evaluation within the project study area. The corridor analysis was followed by an alignments analysis, which evaluated 31 alignments within the selected corridors. The next step was to develop alternatives from the recommended alignments. The alternatives were subjected to more detailed analyses, and recommended alternatives were selected. At each phase of the process, a public meeting was conducted to provide an update on the project's status and to take comments from the public and local agencies regarding the corridors, alignments or alternatives being presented. To date, FDOT has held a Corridor Public Workshop, an Alignments Public Workshop, two Alternatives Public Workshops, two Public and two Agency Scoping Meetings, and multiple Stakeholder Advisory Committee meetings.

The project originally started as an Environmental Impact Statement (EIS), but in 2016 was downgraded to an Environmental Assessment (EA).

III. Project Goals

The following goals and objectives have been defined for this study:

1. Collect necessary information to support the department's decision on the type, design and location of improvements within the study limits;
2. Evaluate alternatives based on factors related to the design and location of the facility, including transportation needs, cost estimates, social impacts, economic factors and environmental effects;
3. Involve and update the public on alternative development and selection process;
4. Recommend a preferred alternative; and,
5. Obtain federal approval of the appropriate environmental documents.

IV. Identification of Affected Officials and Agencies

The following local, regional, state, or federal agencies having a concern in this project due to jurisdictional review or expressed interest have been identified and will be contacted directly by the Florida Department of Transportation (FDOT) through the Advance Notification (AN) process at the outset of the project in accordance with the PD&E Manual, Part 1, Chapter 3, Preliminary Environmental Discussion and Advance Notification. As other concerned public agencies are identified throughout the study, they also will be listed and contacted (Appendix A lists contact information for the following agencies):

State: Florida Department of State, Division of Historical Resources
Florida Department of Agriculture and Consumer Services
Florida Department of Environmental Protection (FDEP)
Florida Fish and Wildlife Conservation Commission (FWC)
FDOT, Federal-Aid Programs Coordinator
FDOT, Office of Environmental Management

Federal: Federal Highway Administration (FHWA)
Federal Emergency Management Agency (FEMA)
Federal Aviation Administration (FAA) - Airports District Office
U.S. Environmental Protection Agency - Region IV (EPA)
U.S. Department of Interior - Fish and Wildlife Service (FWS)
U.S. Army Corps of Engineers (COE) - Regulatory Branch
Habitat Conservation Division
U.S. Department of Agriculture (FDA) - Southern Region
U.S. Department of Interior - National Park Service (NPS),
Southeast Regional Office
U.S. Department of Interior - Bureau of Indian Affairs (BIA),
Office of Trust Responsibilities

Regional: South Florida Water Management District (SFWMD)
Southwest Florida Regional Planning Council (SWFRPC)
Collier County Metropolitan Planning Organization (MPO)

Native American Tribes:

Miccosukee Tribe of Indians of Florida
Muskogee (Creek) Nation of Oklahoma
Poarch Band of Creek Indians of Alabama
Seminole Nation of Oklahoma
Seminole Tribe of Florida

The following elected, appointed and other officials and local public interest groups or organizations having a direct or expressed interest in the project have been identified and will be contacted by the Consultant during the course of the study (Appendix B lists public officials' names and addresses):

Local Elected and Appointed Officials

Florida State Senators for Local Districts:

Kathleen Passidomo Senator, District 28

Florida State Representatives for Local Districts:

Byron Donalds Representative, District 80
 Carlos Trujillo Representative, District 105

Federal Delegation:

Bill Nelson U.S. Senator
 Marco Rubio U.S. Senator
 Francis Rooney U.S. Representative, District 19
 Mario Diaz-Balart U.S. Representative, District 25

Collier County:

Leo E. Ochs, Jr. County Manager
 Donna Fiala Commissioner, District 1
 Andy Solis Commissioner, District 2
 Burt Saunders Commissioner, District 3
 Penny Taylor Commissioner, District 4
 William McDaniel, Jr. Commissioner, District 5
 Dwight E. Brock Clerk of the Circuit Court
 Abe Skinner, CFA Property Appraiser
 Larry Ray Tax Collector
 Kevin J. Rambosk County Sheriff
 Jay Ahmad Director, Transportation Engineering Division
 Kamela Patton County Superintendent of Schools
 Justin Lobb Airport Authority
 David Wilkison Growth Management
 Barry Williams Parks and Recreation
 Trinity Scott Transportation Planning

Other:

Immokalee Community Redevelopment Agency
 Immokalee Enterprise Zone Development Agency
 Immokalee Interagency Council
 Immokalee Local Redevelopment Advisory Board
 Immokalee Master Plan & Visioning Committee

Plus all public and private groups, organizations, agencies and/or businesses that request placement on the project mailing list.

V. Identification of Affected Communities and Stakeholders

Understanding ideas, perspectives and the needs of key stakeholders in the study area is critical for broadly supported decision making and to receive feedback. FDOT has determined that the following individuals and organizations may have an interest in this project and will be notified of any public meetings and activities for the project.

1000 Friends of Florida
Audubon Society of Southwest Florida
Barron Collier Company
Coalition of Immokalee Workers
Collier County Audubon Society
Collier Enterprises
The Conservancy of Southwest Florida
Consolidated Citrus Mgmt., LLC
CREW Land & Water Trust
Defenders of Wildlife
Economic Development Council of Collier County
Everglades Conservation Network
Fischer International
Florida Defenders of the Environment
Florida Panther Society
Florida Sierra Club
Florida Tradeport
Florida Wildlife Federation
Friends of the Everglades
Friends of the Florida Panther Refuge, Inc.
Habitat for Humanity
Hodges University
Immokalee Chamber of Commerce
Immokalee Civic Association
Immokalee Lions Club
King Ranch
The Nature Conservancy
Redlands Christian Migrant Association
Responsible Growth Management Coalition
RTH Express
Shirley Brown Trust
Sierra Club
Southeastern Natural Resource Center
Southwest Florida Hispanic Chamber of Commerce
SR 29 Task Force
Williams Farms

This project covers a portion of Collier County that includes the community of Immokalee. The demographics of the study area were obtained through information on the US Environmental Protection Agency Environmental Justice Screening Tool. A map showing the analyzed area and the US Census information for this area can be found in Appendix C. Based on the demographics of the study area; 73% of the population in the study area is of Hispanic/Latino ethnicity, many of whom speak English less than very well.

Limited English Proficiency - The Consultant will include information in Spanish on project materials. Contact information to request project materials in Haitian Creole will be listed on brochures, meeting invitations, newsletters and the project website. In addition, Spanish interpreters (Haitian Creole upon request) will be provided at public meetings and at the public hearing.

Plain Language Initiative - All forms of notification to the public will comply with the Governor’s Plain Language Initiative (Executive Order 0701). This includes letters, advertisements, notices, newsletters, and any other communication meant for public use. The Executive Order requires clear language containing only necessary information presented in a logical sequence. It further calls for short sentences written in the active voice that make it clear who is responsible for what. The Consultant will provide all materials using the Plain Language Initiative guidelines.

VI. Outreach Activities

The following techniques will be used to notify the public of the proposed transportation improvement and to solicit public input into the project development process.

COLLIER COUNTY MEDIA		
Newspapers	Radio	Television
<i>Naples Daily News</i>	WCNZ AM 1660	WINK – Channel 11
<i>Gaceta Tropical</i>	WVOI AM 1480	WTVK – Channel 6
<i>Immokalee Bulletin</i>	WNOG AM 1270	WZVN – Channel 7
<i>Nuevos Ecos</i>		WBSP – Cable
<i>El Nuevo Herald</i>		WUBF – Cable
<i>Everglades Echo</i>		
<i>Panorama News</i>		

In addition to working with the media, a number of different notification techniques will be used throughout the project development process. A brief description of these techniques is provided below.

Letters/Newsletters: Bilingual letters/newsletters will be used to communicate directly with those on the project mailing list at key points throughout the study. The letters/newsletters will contain information about the project, the PD&E Study process, and the project's current schedule. The letters/newsletters will serve as notice to announce upcoming public meetings. Five newsletters have been sent for this project. It is estimated up to three additional newsletters will be mailed directly to property owners, residents and businesses. The newsletters will be distributed electronically to elected and appointed officials and agencies, and other interested groups or individuals.

News/Press Releases: News/press releases will be submitted to FDOT seven days prior to each public workshop and the public hearing.

**Public Notices/
Ads:** Public advertisement will consist of a display advertisement in the *Naples Daily News* and at least one Spanish or bilingual publication, as available, once 10-14 days prior to public workshops, twice prior to the Public Hearing (15-30 days prior and again at 7-12 days prior), and once to announce federal Location and Design Concept Acceptance (LDCA) at the end of the study. A Notice of Availability of the project documents will be incorporated into the Public Hearing advertisements. A notice will be published in the Florida Administrative Register seven days prior to any public meeting.

**Public
Announcements:** In order to distribute PD&E phase information, fliers will be made available to organizations such as neighborhood/civic groups, FDOT, and Collier County to publish in existing newsletters and websites. Any such correspondence will be coordinated through the District's Communications Office. Fliers will also be posted around the study area in locations with high visibility.

**Direct Mail List
For Public Hearings:** A mailing list will be established, and the following groups will be contacted to obtain input into the PD&E Study process and/or provide project information and introduce opportunities for public comment:

Those whose property lies, in whole or in part, within at least 300 feet on either side of the centerline of each project alternative as required by Florida Statutes (Section

339.155, F.S.), as well as other local citizens who may be impacted by the construction of this project. The property owner list will be compiled from the Collier County Property Appraiser's office utilizing a GIS database containing current tax maps and ownership records. The map of the mailing area and the mailing list are provided in Appendix D. This list will be updated prior to mailings for public meetings and the public hearing.

Elected and appointed officials in the area (county, state, federal) and community leaders who have been identified or have requested to be put on the mailing list.

Public and private groups, organizations, agencies, businesses, or individuals that have been identified or have requested to be placed on the mailing list for this project.

Project Website:

A project website is available which provides current project information to elected officials, agencies, and the public. The website includes a comments page where visitors can provide their comments on the project. The website also displays a project map, project description, public meeting materials, project schedule and other project information. The address for the website is www.SR29Collier.com.

Techniques:

Stakeholder Advisory Committee: A local stakeholder advisory committee has been selected with the assistance of local governments; composed of local citizens having an active role in the community, such as representatives from impacted/interested communities, non-governmental organizations and neighborhood associations or other groups within the project area. This group was organized at the beginning of the project to involve local participants for advisory purposes.

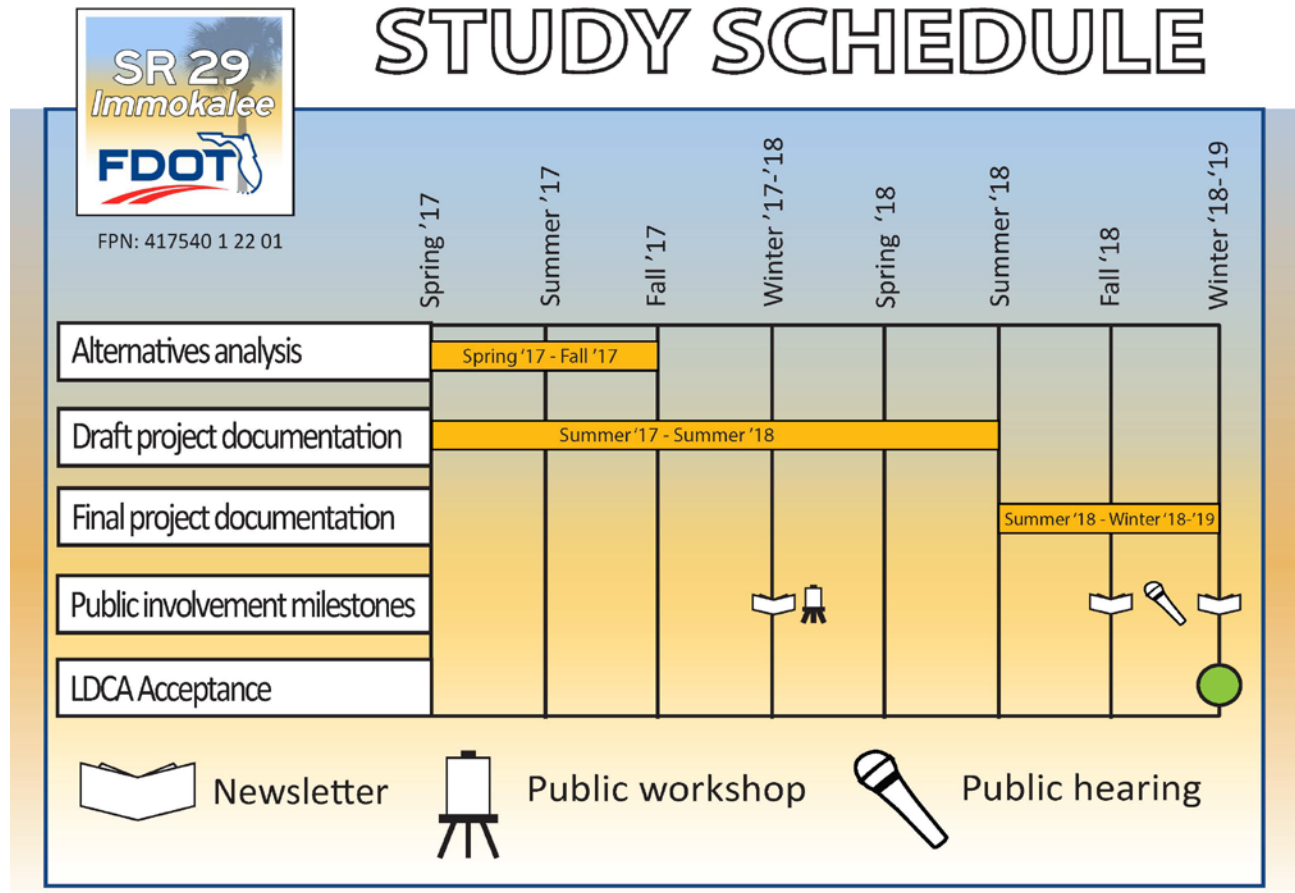
Presentations to Local Officials: Presentations will be given to local officials and agencies such as the MPO prior to the Public Information Meeting(s) and the public hearing to apprise local officials of the project status, specific location, and design concepts, and to receive their comments.

Public Information Meetings - To enhance the public's understanding of the study and to illustrate the various corridors under consideration, project information will be presented in various media at the meetings. This may include an audio/visual presentation, board-mounted exhibits, concept plans, and a project handout.

Public Hearing – A formal public hearing, as required by federal regulations and state law, will be held in fall 2018.

Informal Meetings – In addition to the scheduled public meetings and public hearing, there will be up to 20 additional meetings with the public, elected and appointed officials, public agencies, or civic groups. The purpose of these meetings will be to apprise the attendees of the project status, specific location, and design concepts and to receive input.

VII. Public Outreach Schedule 2017-2019



VIII. Coordination with Collier County

Copies of aerial maps depicting all alignment and design concepts under consideration, along with draft copies of engineering and environmental study documentation, will be furnished to the Collier County, with their review and written comments solicited. Updated information will also be forwarded to the county for review and comment prior to the scheduled public hearing.

IX. Public Hearing

In compliance with the FDOT's *PD&E Manual*, Part 1, Chapter 11, 23 CFR 771, and Section 339.155, FS, a public hearing will be held for this project.

Public Hearing Site: The public hearing will be held at an appropriate facility convenient to the study area.

- Public Advertisement:** Legal/display advertisements will be placed published in the *Naples Daily News* and at least one Spanish or bilingual publication, as available and as appropriate. A quarter-page display advertisement will be published twice, once at least 15-30 days prior to the public hearing and again seven to 12 days prior to the public hearing. In addition, the public hearing will also be advertised in the Florida Administrative Register at least seven days prior to the hearing.
- Letters of Invitation:** Letters/newsletters will be mailed to property owners as required by Section 339.155, F.S., and to local elected and appointed government officials notifying them of the upcoming public hearing.
- Hearing Preparation:** An audio/visual presentation, display graphics, project handout, and comment form will be developed to supplement the oral presentation.
- Transcript:** A verbatim transcript of the public hearing will be compiled to include written comments received at the hearing and written comments received within the established comment period after the hearing. All public hearing documentation (handouts, presentation, graphics, etc.) will be included with the transcript. The transcript will include a script of the recorded presentation, if applicable.
- Documents for Public Review:** All draft documents to support the PD&E study will be available for public review at least 21 days prior to the public hearing.
- Locations of Documents for Public Review:** Public notice will be provided in the public hearing advertisement and by mailed invitational letter/newsletters as to where the study documents are located for public review.
- Title VI and Related Statutes:** Information regarding the Title VI Program will be provided in the presentation, the handout, signage, and through availability of personnel on the Title VI Program and the Relocation Assistance Program.

Americans with Disabilities Act Compliance:

Notification of the Department's intent to comply with the ADA will be provided in the public advertisements, in invitational letters to property owners, elected officials, agencies, and interested citizens and by the selection of a public hearing site that meets all ADA requirements.

X. Public Hearing Follow-Up

The following procedures will occur after the Public Hearing.

Responses:

Responses to all letters received as a result of the hearing and questions and comments not answered at the public hearing will be made in writing.

Recommendation

Notice:

A legal notice announcing approval of the final document and recommendations will be published in the *Naples Daily News* and at least one Spanish or bilingual publication, as available.

Public Hearing

Transcript Package:

A Transcript Package will be produced and submitted following the public hearing. The Transcript Package will include a verbatim hearing transcript prepared by an approved court reporter, an errata sheet detailing any transcript discrepancies, a copy of all correspondence received by the Department as part of the public hearing record, and affidavits of publication for newspaper ads advertising the hearing.

Public Involvement

Summary:

A Public Involvement Summary Report will be produced and submitted at the conclusion of the study, containing, at a minimum, all documentation regarding public participation performed throughout the study period. This summary will include all comments and responses received from the public; the Advance Notification; documentation of coordination with local officials and agencies; and public meetings materials; proof of publication of ads for all public meetings; sign-in sheets for all public meetings; the verbatim transcript from the public hearing with certification by the Project Manager (Moderator); and all public correspondence.

XI. Public Involvement During Design

To the extent public involvement activities are necessary in the Design phase, the Design Project Manager will be responsible for coordinating any such activities.

APPENDIX A

Public Involvement Plan Agencies Mailing List

APPENDIX A

Public Involvement Plan Agencies Mailing List

State, Federal and Regional Agencies

**Mr. James Christian, Division Administrator
Federal Highway Administration (FHWA)
James.Christian@dot.gov**

**Gracia Szczech, Regional Administrator
Region IV
Federal Emergency Management Agency (FEMA)
Gracia.Szczech@fema.gov**

**Mr. Patrick Plumb, Regional Administrator
Federal Railroad Administration - Region 3
Patrick.Plumb@dot.gov**

**Mr. Bart Vernace, Manager
Federal Aviation Administration (FAA)
Airports District Office (Orlando)
Bart.Vernace@faa.gov**

**Mr. Carlos Torres, District Conservationist
U.S. Department of Agriculture- National Resources
Conservation Service (NRCS)
State Conservationist
Carlos.Torres@fl.usda.gov**

**Mr. Tony Tooke, Regional Forester
U.S. Department of Agriculture-
United States Forest Service - Region 8
MailroomR8@fs.fed.us**

**Mr. Michael D. Nedd, Acting Director
U.S. Department of Interior
Bureau of Land Management
Mnedd@blm.gov**

**Mr. Ubaldo Cazzoli, Senior Field
Environmental Officer
U.S. Department of Housing and Urban Development
Ubaldo.a.Cazzoli@hud.gov**

**Mr. William Werkheiser
Deputy
U.S. Department of Interior
U.S. Geological Survey
whwerkhe@usgs.gov**

**Ms. Holly Weyers
Southeast Regional Director
U.S. Department of Interior
U.S. Geological Survey
hsweyers@usgs.gov**

**Ms. Mary Yeargan
Southwest District Director
Florida Department of Environmental Protection
(FDEP)
Mary.Yeargan@dep.state.fl.us**

**Ms. Cindy Dohner
Southeast Regional Director
U.S. Department of Interior
U.S. Fish and Wildlife Service
Cynthia_Dohner@fws.gov**

**Mr. Kevin O'Kane
Supervisory Biologist
U.S. Army Corps of Engineers
Regulatory Branch - Tampa Field Office
Kevin.d.Okane@usace.army.mil**

APPENDIX A (Continued)
Public Involvement Plan Agencies Mailing List

State, Federal and Regional Agencies

Ms. Tori White, Deputy Chief
U.S. Army Corps of Engineers, Regulatory Branch -
Jacksonville
Tori.White@usace.army.mil

Mr. Dan Smith, Deputy Director
U.S. Department of Interior
Bureau of National Park Service
Paul_Smith@nps.gov

Mr. Israel Vega-Marriero, District Conservationist
USDA Natural Resources
Conservation Service - Sarasota
Israel.Vega-Marriero@fl.usda.gov

Mr. Bryan Rice, Director
U.S. Department of Interior
Bureau of Indian Affairs
Bryan.Rice@bia.gov

Mr. Stan Austin
Southeast Regional Director
U.S. Department of Interior –
Bureau of National Park Service
Stan_Austin@nps.gov

Mr. Leroy Gishi
Chief, Division of Transportation
U.S. Department of Interior
Bureau of Indian Affairs
Leroy.Gishi@bia.gov

Mr. Ken Detzner
Secretary of State
Florida Department of State
DOS.SecretaryofState@DOS.MyFlorida.com

Ms. Crissy Proctor
Executive Director
Florida Department of Economic
Opportunity
Crissy.Proctor@deo.myflorida.com

Mr. Bruce Maytubby
Acting Regional Director of Eastern Region
U.S. Department of Interior
Bureau of Indian Affairs
Eastern.inquiries@bia.gov

Mr. Wes Maul, Director
Florida Division of Emergency Management
Wes.Maul@em.myflorida.com

APPENDIX A (Continued)
Public Involvement Plan Agencies Mailing List

State, Federal and Regional Agencies

Mr. Nick Wiley
Executive Director
Florida Fish and Wildlife
Conservation Commission
Nick.Wiley@myFWC.com

Ms. Rena Reis
Assistant Federal-Aid Programs Coordinator
Florida Department of Transportation, D1
Rena.Reis@dot.state.fl.us

Mr. Jason Watts
Office of Environmental Management
Florida Department of Transportation
Jason.Watts@dot.state.fl.us

Mr. Duane Weis
Branch Manager
Florida Division of Forestry
Duane.Weis@freshfromflorida.com

Mr. Chris Wynn
Regional Director
Florida Fish and Wildlife
Conservation Commission
Chris.Wynn@myFWC.com

Ms. Ashley Melton
Assistant Federal-Aid Programs Coordinator
Florida Department of Transportation, D1
Ashley.Melton@dot.state.fl.us

Mr. Brian Armstrong
Executive Director
Southwest Florida Water Management District
Brian.Armstrong@swfwmd.state.fl.us

APPENDIX A (Continued)
Public Involvement Plan Agencies Mailing List

Native American Tribes

Chairman Cypress
Miccosukee Tribe of Indians of Florida
Tamiami Station
P.O. Box 440021
Miami, FL 33144

Chief Floyd
Muscogee (Creek) Nation
Office of the Administration
P.O. Box 580
Okmulgee, OK 74447

Chairman Bryan
Poarch Band of Creek Indians
5811 Jack Springs Road
Atmore, AL 36502

Chairman Osceola
Seminole Tribe of Florida
6300 Stirling Road
Hollywood, FL 33024

Chief Harjo
Seminole Nation of Oklahoma
P.O. Box 1498
Wewoka, OK 74884

APPENDIX A (Continued)

Public Involvement Plan Agencies Mailing List

Collier County Agencies

Ms. Len Golden-Price
Administrative Services Department Head
Collier County
LenPrice@colliergov.net

Michelle Edwards-Arnold
Public Transit & Neighborhood
Enhancement Director
Collier County
AltTransModes@colliergov.net

Justin Lobb
Airport Manager, Airport Authority
Collier County
JustinLobb@colliergov.net

Jay Ahmad
Transportation Engineering
Director
Collier County
JayAhmad@colliergov.net

Tim Dunham
CRA Operations Manager
Bayshore Triangle, Collier County
TimDunham@colliergov.net

Christie Betancourt
CRA Interim Operations Manager
Immokalee, Collier County
ChristieBetancourt@colliergov.net

Tim Dunham
Executive Manager of
Corporate Business Operations
Collier County
TimDunham@colliergov.net

Mike Sheffield
Communication & Customer
Relations Division
Collier County
MichaelSheffield@colliergov.net

Michael Bosi
Zoning Division Director
Collier County
MichaelBosi@colliergov.net

Ken Kovensky
Operations & Regulatory
Management Director
Collier County
KennethKovensky@colliergov.net

Matthew McLean
Development Review Director
Collier County
MatthewMcLean@colliergov.net

Rich Long
Building Director
Collier County
RichardLong@colliergov.net

Amy Patterson
Capital Project Planning, Impact fees & Program Management
Director
Collier County
AmyPatterson@colliergov.net

Gene Shue
Operations Support Director
Collier County
GeneShue@colliergov.net

APPENDIX A (Continued)
Public Involvement Plan Agencies Mailing List

Collier County Agencies

Connie Deane
Community Liaison PIO
Collier County
ConnieDeane@colliergov.net

Chief Tabatha Butcher
Emergency Medical Services
Collier County
TabathaButcher@colliergov.net

Summer Brown-Araque
Environmental Services Contact
Collier County
SummerBrownAraque@colliergov.net

Barry Williams
Parks and Recreation Director
Collier County
BarryWilliams@colliergov.net

Travis Gossard
Road Maintenance Director
Collier County
TravisGossard@colliergov.net

Trinity Scott
Transportation Planning Manager
Collier County
TrinityScott@colliergov.net

Anthony Khawaja
Engineer of Traffic Operations
Collier County
AnthonyKhawaja@colliergov.net

Steve Carnell
Public Services Department Head
Collier County
SteveCarnell@colliergov.net

Daniel Rodriguez
Solid & Hazardous Waste Management
Division Director
Collier County
danielrodriguez@colliergov.net

Beth Johnssen
Wastewater Division Director
Collier County
BethJohnssen@colliergov.net

Steve Messner
Water Division Director
Collier County
SteveMessner@colliergov.net

Daniel Summers
Bureau of Emergency Services Director
Collier County
dansummers@colliergov.net

**APPENDIX A (Continued)
Public Involvement Plan Agencies Mailing List**

Collier County Agencies

**Stephanie Vick
Health Division Director
Collier County
stephanie.vick@flhealth.gov**

**George Yilmaz
Public Utilities Division Administrator
Collier County
georgeyilmaz@colliergov.net**

**Dennis Linguidi
Facilities Management Division
Collier County
DennisLinguidi@colliergov.net**

**Thaddeus Cohen
Growth Management Department Head
Collier County
thaddeuscohen@colliergov.net**

**James French
Growth Management
Deputy Department Head
Collier County
JamesFrench@colliergov.net**

**Jeffrey Klatzkow
County Attorney
Collier County
JeffreyKlatzkow@colliergov.net**

**Nick Casalanguida
Deputy County Manager
Collier County
NickCasalanguida@colliergov.net**

**Tom Chmelik
Public Utilities Planning & Project Management
Director
Collier County
TomChmelik@colliergov.net**

**Mr. Leo Ochs
County Manager
Collier County
Maryjobrock@colliergov.net**

**Ms. Kamela Patton
Superintendent
Collier County School Board
Patton@collierschools.com**

APPENDIX B

Public Involvement Plan Elected and Appointed Officials Mailing List

APPENDIX B

Public Involvement Plan Elected and Appointed Officials Mailing List

Elected and Appointed Officials

Senator Bill Nelson
United States Senate
elizabeth_king@billnelson.senate.gov

Senator Marco Rubio
United States Senate
zachary_zampella@rubio.senate.gov

The Honorable Francis Rooney
Congressman, District 19
United States Representative
Francis.rooney@mail.house.gov

The Honorable Mario Diaz-Balart
Congressman, District 25
United States Representative
sarah.hodgkins@mail.house.gov

The Honorable Byron Donalds
Representative, District 80
Florida State House of Representatives
Byron.donalds@myfloridahouse.gov

The Honorable Carlos Trujillo
Representative, District 105
Florida State House of Representatives
carlos.trujillo@myfloridahouse.gov

The Honorable Kathleen Passidomo
Senator, District 28
Florida State Senate
Passidomo.kathleen@flsenate.gov

The Honorable Donna Fiala
Commissioner, District 1
Collier County Board of Commissioners
DonnaFiala@colliergov.net

The Honorable Andy Solis
Commissioner, District 2
Collier County Board of Commissioners
AndySolis@colliergov.net

The Honorable Burt Saunders
Commissioner, District 3
Collier County Board of Commissioners
BurtSaunders@colliergov.net

The Honorable Penny Taylor
Commissioner, District 4
Collier County Board of Commissioners
PennyTaylor@colliergov.net

The Honorable Bill McDaniel, Jr.
Commissioner, District 5
Collier County Board of Commissioners
BillMcDaniel@colliergov.net

The Honorable Abe Skinner
Property Appraiser
Collier County
askinner@collierappraiser.com

Sheriff Kevin Rambosk
Sheriff
Collier County
sheriff@colliersheriff.net

APPENDIX B

Public Involvement Plan Elected and Appointed Officials Mailing List

Elected and Appointed Officials

The Honorable Dwight Brock
Clerk of the Circuit Court
Collier County
dwight.brock@clerk.collier.fl.us

The Honorable Larry Ray
Tax Collector
Collier County
lray@colliertax.com

The Honorable Jennifer Edwards
Supervisor of Elections
Collier County
SupervisorOfElections@CollierGov.net

The Honorable Kelly Lichter
District 1
Collier County School Board
lichteke@collierschools.com

The Honorable Stephanie Lucarelli
District 2
Collier County School Board
lucars@collierschools.com

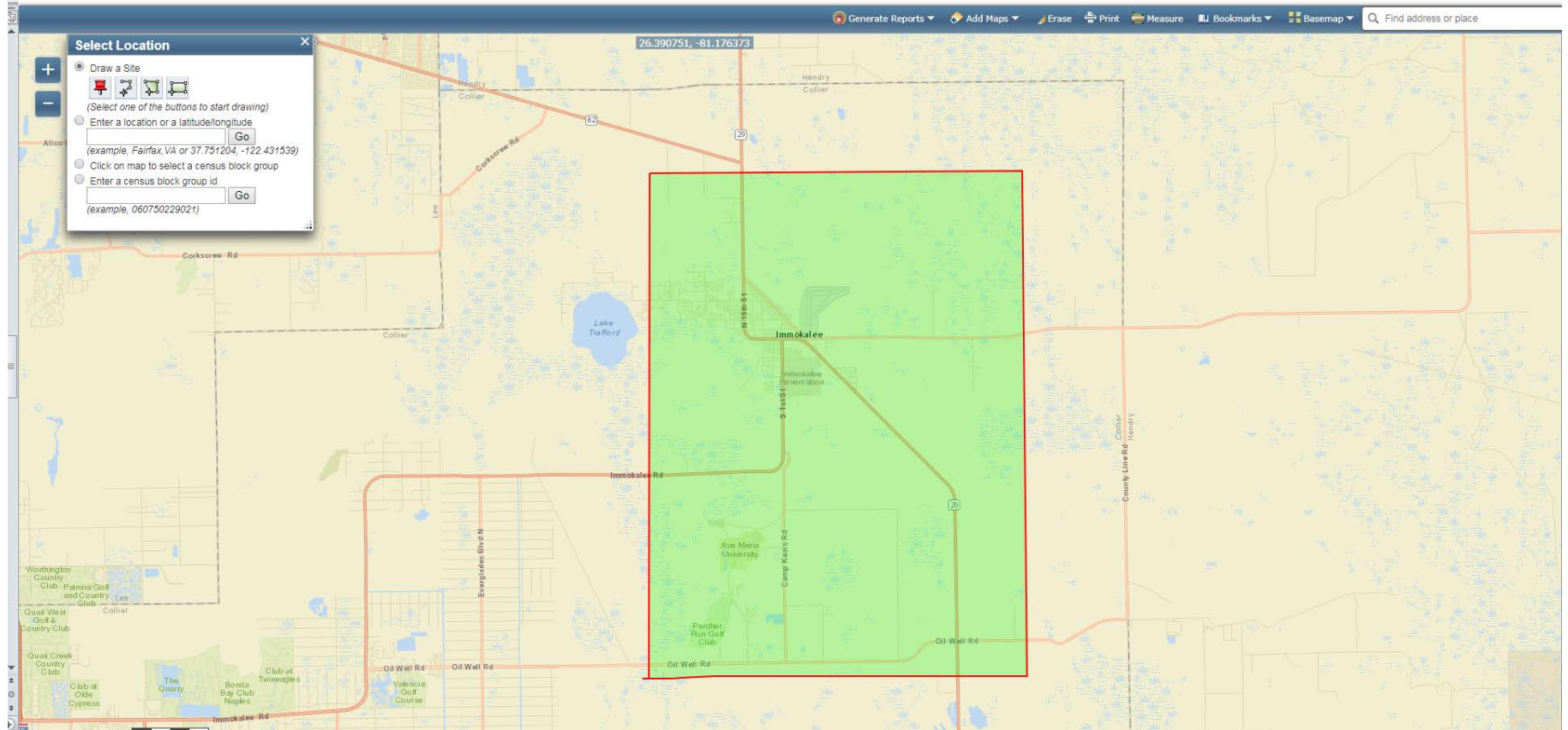
The Honorable Erika Donalds
District 3
Collier County School Board
donale@collierschools.com

The Honorable Erick Carter
District 4
Collier County School Board
cartee1@collierschools.com

The Honorable Roy Terry
District 5
Collier County School Board
terryro@collierschools.com

APPENDIX C

Public Involvement Plan Census Tract



Project study area in green

Location: User-specified polygonal location
 Ring (buffer): 0-mile radius
 Description:

Summary		Census 2010
Population		25,227
Population Density (per sq. mile)		161
Minority Population		23,454
% Minority		93%
Households		6,040
Housing Units		7,167
Land Area (sq. miles)		157.16
% Land Area		98%
Water Area (sq. miles)		3.42
% Water Area		2%

Population by Race	Number	Percent
Total	25,227	-----
Population Reporting One Race	24,212	96%
White	11,533	46%
Black	4,575	18%
American Indian	239	1%
Asian	58	0%
Pacific Islander	41	0%
Some Other Race	7,767	31%
Population Reporting Two or More Races	1,015	4%
Total Hispanic Population	18,531	73%
Total Non-Hispanic Population	6,696	27%
White Alone	1,773	7%
Black Alone	4,455	18%
American Indian Alone	97	0%
Non-Hispanic Asian Alone	40	0%
Pacific Islander Alone	1	0%
Other Race Alone	27	0%
Two or More Races Alone	303	1%

Population by Sex	Number	Percent
Male	13,879	55%
Female	11,348	45%

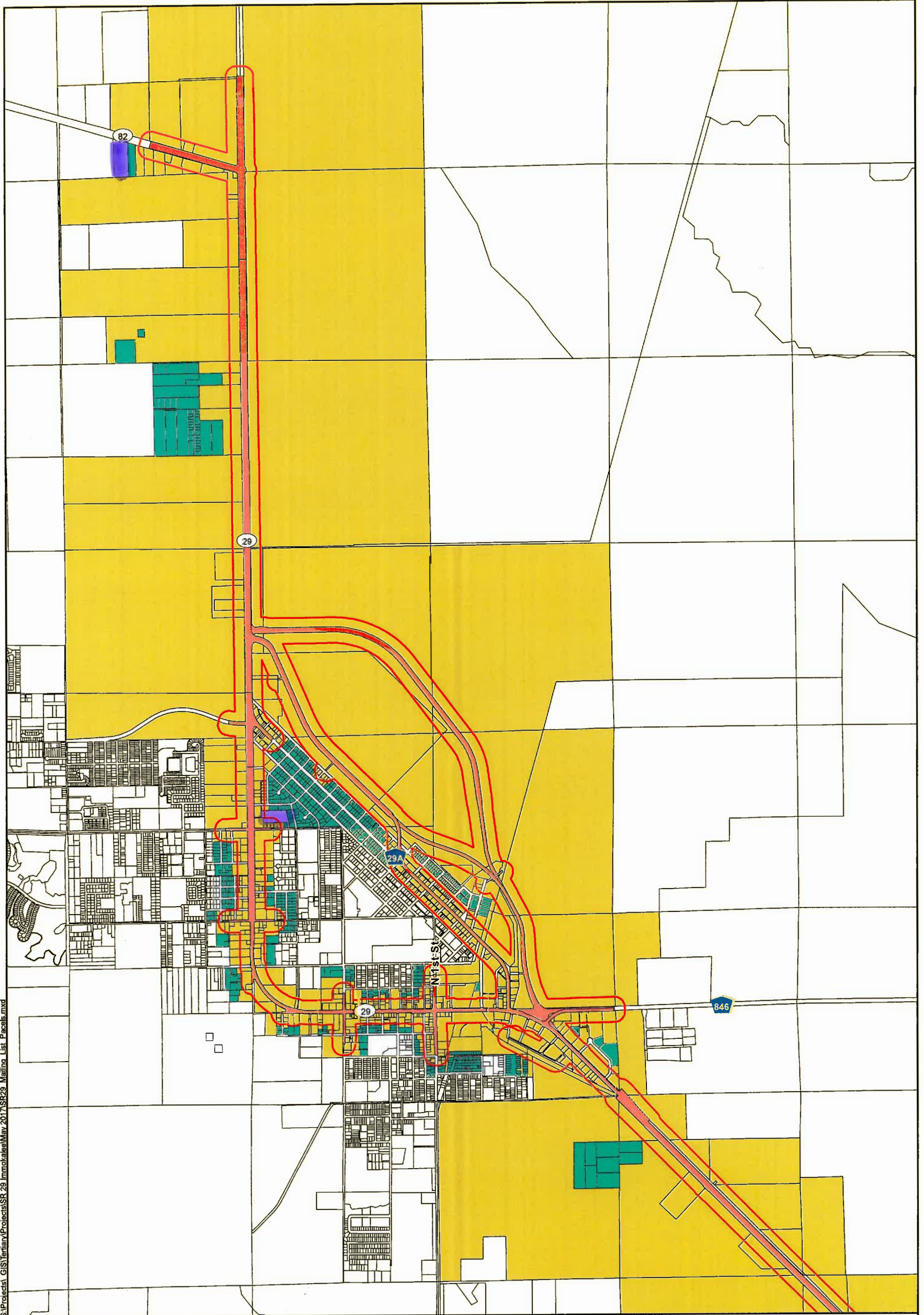
Population by Age	Number	Percent
Age 0-4	2,655	11%
Age 0-17	8,401	33%
Age 18+	16,826	67%
Age 65+	1,386	5%

Households by Tenure	Number	Percent
Total	6,040	
Owner Occupied	2,502	41%
Renter Occupied	3,539	59%

Data Note: Detail may not sum to totals due to rounding. Hispanic population can be of any race.
Source: U.S. Census Bureau, Census 2010 Summary File 1.

APPENDIX D

Property Owner Mailing Map and Address List



S:\Projects\GIS\Tertiary\Projects\SR 29\Immo\ale\May 2017\SR29_Mailing_List_Parcel.mxd

- Legend**
- 300ft Buffer of Alternatives
 - All Alignments May 2017
 - 2017 Mailing List Parcels**
 - WITHIN 300 FEET
 - ADDITIONAL PARCELS DUE TO PROXIMITY
 - Collier County Parcels 2017

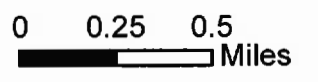
please add SR 29 from SR 82 to Oil Well Road

PD&E Study

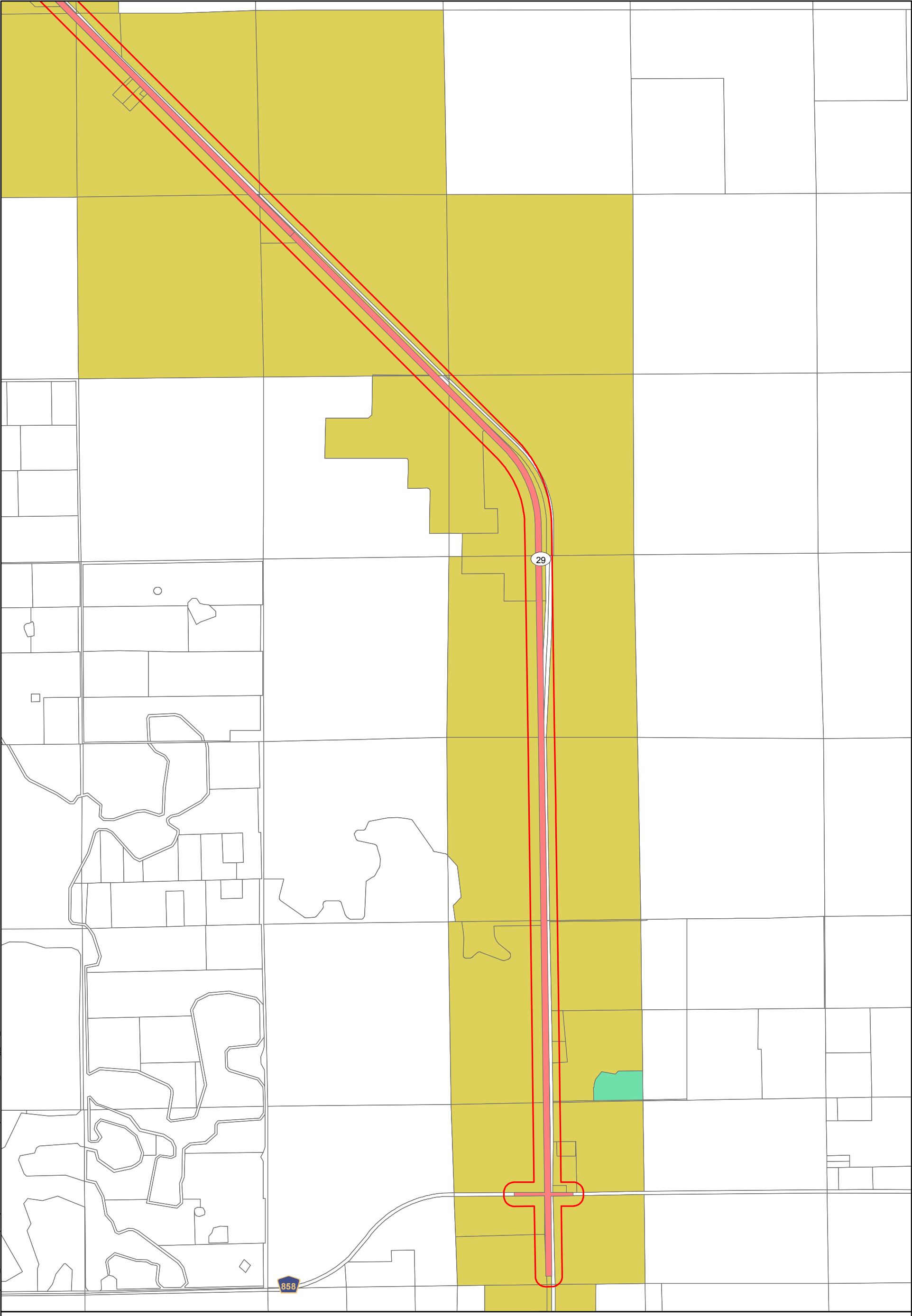
FPIN

Parcels within 300 feet of Recommended Alternative

Sheet 1 of 2



S:\Projects\GIS\Tertiary\Projects\SR 29 Immokalee\May 2017\SR29_Mailing_List_Parcel.mxd

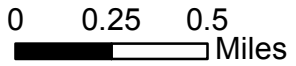


Legend

- 300ft Buffer of Alternatives
- All Alignments May 2017
- 2017 Mailing List Parcels**
- WITHIN 300 FEET
- ADDITIONAL PARCELS DUE TO PROXIMITY
- Collier County Parcels 2017

SR 29 from SR 82 to Oil Well Road
PD&E Study
FPIN

Parcels within 300 feet of Recommended Alternative
Sheet 2 of 2



1102 IMMOKALEE LLC CVS #3248-01-
ATTN: STORE ACCOUNTING
1 CVS DRIVE, MC 2320
WOONSOCKET, RI 02895

PACE COLLIER AT IMMOKALEE THC INC
1 W ADAMS ST STE 301
JACKSONVILLE, FL 32202

SALISBURY, IONA L
1000 ALACHUA ST
IMMOKALEE, FL 34142

DEWANE, BISHOP FRANK J
DIOCESE OF VENICE
1000 PINEBROOK RD
VENICE, FL 34285

CARRILLO, CRYSTAL
CARRILLO EST, CRYSTAL
1001 MONROE ST
IMMOKALEE, FL 34142

AREGUIN, SANDRA
MARIA ARREGUIN
1002 MONROE ST
IMMOKALEE, FL 34142

LORENZO-FRANCISCO, ENRIQUE
1002 NEW MARKET RD W
IMMOKALEE, FL 34142

SISTERS OF THE SACRED HEART OF
MARY INC
1003 MADISON AVE W
IMMOKALEE, FL 34142

AREVALO EST, EUGENE
1003 N 29TH ST
IMMOKALEE, FL 34142

CARRILLO, GABRIEL
1003 NEW MARKET RD W
IMMOKALEE, FL 34142

AVALOS, ANNA ROSA ANZUALDA
1003 S 1ST ST
IMMOKALEE, FL 34142

AVALOS JR, NOE LUIS
1003 S 1ST ST
IMMOKALEE, FL 34142

TREJO, ROSALIO
1004 JUMPER LANE #1702
IMMOKALEE, FL 34142

ROBERTS JR, AMOS & PATRICIA G
1004 NEW MARKET RD W
IMMOKALEE, FL 34142

PARALEGAL & NOTARY MULTI SERVICES
LLC
1007 N 15TH STREET
IMMOKALEE, FL 34142

ZEPEDA, ADELA
1008 NEW MARKET RD W
IMMOKALEE, FL 34142

BERMUDEZ, CARLOS
1009 JEFFERSON AVE W
IMMOKALEE, FL 34142

MEZA, EDUARDO R & ADRIANA A
1009 MADISON AVE W
IMMOKALEE, FL 34142

RODIGUEZ, MARIA C
1009 N 29TH ST
IMMOKALEE, FL 34142

AMADOR, SALVADOR
FLORES PAULA + GARCIA FLORES
1009 NEW MARKET RD
IMMOKALEE, FL 34142

GALVAN, J THOMAS
VEGA MARIA LUZ
RODRIGUEZ OSORNIO
1009 RAULERSON RD
IMMOKALEE, FL 34142

C & S NATIONAL BANK –
AKA NATIONS BANK
BANK OF AMERICA - ATT:CORP RE ASMT NC1-
001-03-81
101 N TRYON ST
CHARLOTTE, NC 28255

COLLIER REALTY CORP
101 NEW MARKET RD E
IMMOKALEE, FL 34142

APONTE, CARLOS & NOEMI
1010 NEW MARKET RD W
IMMOKALEE, FL 34142

ASP PROPERTIES LLC
10108 LAKE COVE LANE
TAMPA, FL 33618

ZIPPERER, THOMAS S & CHRISTIAN
1011 MONROE ST
IMMOKALEE, FL 34142

1011 IMMOKALEE LLC
1011 N 15TH ST
IMMOKALEE, FL 34142

VALLE, MANUELA
1011 NEW MARKET RD W
IMMOKALEE, FL 34142

DELAROSA, RAMIRO & LORIE ANN
1013 JEFFERSON AVE W
IMMOKALEE, FL 34142

SENATUS, ANNE M
1013 MADISON AVE W
IMMOKALEE, FL 34142

SEMATUS, BEMET
ANNE M DUMOND
1013 MADISON AVE W
IMMOKALEE, FL 34142

VASALLO, CARMEN
1013 NEW MARKET RD W
IMMOKALEE, FL 34142

CANOVA, VANESSA
1014 JEFFERSON AVE W
IMMOKALEE, FL 34142

LOPEZ JR, ELEAZAR & ORALIA
1017 JEFFERSON AVE W
IMMOKALEE, FL 34142

ROBERTS, JOSIE E + LEROY G CORBITT
JR EST + MELONIE S HAMLETT
1018 JEFFERSON AVE W
IMMOKALEE, FL 34142

CARSON, RODNEY B
CYNTHIA L CARSON
1018 MONROE ST
IMMOKALEE, FL 34142

CHAPPA, JOY & JESUS
1019 MONROE ST
IMMOKALEE, FL 34142

PERDOMO, OSCAR
1022 GARDEN LAKE CIRCLE #102
IMMOKALEE, FL 34142

LOPEZ JR, FRANK
1027 NE 37TH ST
OAKLAND PARK, FL 33334

JUAREZ, HERMINIGILDO J
103 DIXIE AVE W
IMMOKALEE, FL 34142

FRITCHEY, E REX & SARAH
103 JASMINE RD W
LEHIGH ACRES, FL 33936

WOODWORTH, BRIAN THEODORE
1030 N ARROYO ST
RIDGECREST, CA 93555

PARRA, BALTAZAR
MARIA ISABEL PARRA
1031 RINGO LN
IMMOKALEE, FL 34142

BLOCKER, DEAN
KENNETH BLOCKER JR
1031 W MAIN ST
IMMOKALEE, FL 34142

HERRERA, SENAIDA
105 DIXIE AVE W
IMMOKALEE, FL 34142

BARNHART, BENITO
105 SOUTH 6TH ST
IMMOKALEE, FL 34142

CARNICERIA MONTERREY INC
10507 BELLA VISTA DR
FORT MYERS, FL 33913

M & M A-SAL LLC
106 DIXIE AVE E
IMMOKALEE, FL 34142

CHARLES, BOLOMIN & RAYMONDE
107 WHITE WAY
IMMOKALEE, FL 34142

GONZALEZ JR EST, MANUEL
CHRISTINE GONZALEZ
109 S 4TH ST
IMMOKALEE, FL 34142

VOLCIMUS, ANDREE R
1090 LAKE TRAFFORD RD
IMMOKALEE, FL 34142

DELEON, JOSE MANUEL & SYLVIA
1094 LAKE TRAFFORD RD
IMMOKALEE, FL 34142

SALINAS, FRANCISCA
110 DIXIE AVE W
IMMOKALEE, FL 34142

GASTON, FRED
110 N 1ST ST
IMMOKALEE, FL 34142

MENDOZA, GRACIANO EIME MENDOZA
+ CESAR ALMANZA
1101 CHARLOTTE ST
IMMOKALEE, FL 34142

ESTRADA, ROBERTO
PAMELA ESTRADA
1101 MONROE ST
IMMOKALEE, FL 34142

FLORES, ROBERTO ESTRADA
1101 MONROE ST
IMMOKALEE, FL 34142

CAMPBELL, JUAN E
NORA A CAMPBELL
1101 N 11TH ST
IMMOKALEE, FL 34142

PEREZ, JUAN L & MARIA
1101 SEACREST DR NW
PORT CHARLOTTE, FL 33948

RINCON, JOSUE & SENOVIA
1102 BUSH ST E
IMMOKALEE, FL 34142

ROMERO, JORGE A & IRMA G
1102 N 11TH ST
IMMOKALEE, FL 34142

W H & H J SPOONER TRUST
1103 N 11TH ST
IMMOKALEE, FL 34142

MENDEZ JR, RODOLFO
1105 MADISON AVE W
IMMOKALEE, FL 34142

GONZALEZ, DANIEL & SANDRA
1109 JEFFERSON AVE W
IMMOKALEE, FL 34142

BROWN, TERRY + KATHLEEN M
PRESLEY + CLAUDIA M KENNEDY
111 NEW MARKET RD W
IMMOKALEE, FL 34142

ORTIZ, ALEJANDRO M
111 WHITE WAY
IMMOKALEE, FL 34142

JIMENEZ, JORGE VICENTE
1110 NEW MARKET RD W
IMMOKALEE, FL 34142

BERNARDO J RODRIGUEZ
1113 N 11TH ST
IMMOKALEE, FL 34142

RAYNOR ET AL, WANDA D
1116 N 11TH ST
IMMOKALEE, FL 34142

BARNHART-SANCHEZ, BELINDA
1118 N 11TH ST
IMMOKALEE, FL 34143

SPOONER TR, HOLLY UTD 7/20/00
1103 N 11TH ST
IMMOKALEE, FL 34142

RICE, ANN M
1104 N 11TH ST
IMMOKALEE, FL 34142

BOYCE, FERRIE
1107 N 11TH ST
IMMOKALEE, FL 34142

MADISON AVENUE PROPERTIES LLC
1109 MADISON AVE W
IMMOKALEE, FL 34142

BROWN, EARL & GLORIA
111 NEW MARKET RD W
IMMOKALEE, FL 34142

BATANCOURT, HOMER
BETANCOURT, ROSALINDA
1110 JEFFERSON AVE W
IMMOKALEE, FL 34142

AVALOS SR, DANIEL & LINDA A
1111 N 11TH ST
IMMOKALEE, FL 34142

HABITAT FOR HUMANITY OF COLLIER
COUNTY INC
11145 TAMiami TRL E
NAPLES, FL 34113

RAYNOR, WANDA D
LISA G RAYNOR
1116 N 11TH STREET
IMMOKALEE, FL 34142

CUEVAS, MIGUEL A
JUANA GONZALEZ C
1119 MADISON AVE W
IMMOKALEE, FL 34142

SPOONER TR, HOLLY JEWEL W H
SPOONER & H J SPOONER TR UTD
07/20/00
1103 N 11TH ST
IMMOKALEE, FL 34142

KARAGOZ, YAVUZ
1105 HOMESTEAD RD N
LEHIGH ACRES, FL 33936

BENITEZ, LUCAS
1107 NEW MARKET RD W
IMMOKALEE, FL 34142

GRIFFIN JR, CHARLES M
1109 MADISON AVE W
IMMOKALEE, FL 34142

HOLLOWAY, PETRA
111 RICHARD RUN
YORKTOWN, VA 23693

VILLALOBOS JR, ALFREDO
ROSA ISELA + PEREZ VILLALOBOS
1110 MONROE ST
IMMOKALEE, FL 34142

CONTRERAS, MARIA
1112 N 11TH ST
IMMOKALEE, FL 34142

LIGAS, EDUARDO & ROSA
1115 MADISON AVE W
IMMOKALEE, FL 34142

SOTO, MARIA L
1116 NEW MARKET RD W
IMMOKALEE, FL 34142

MARTINEZ, ADAN
112 S 7TH ST
IMMOKALEE, FL 34142

LOPEZ, HERMITANIO FIGUEROA
RICARDA BALTAZAR
1122 BUSH ST E
IMMOKALEE, FL 34142

PENNA, ANDREA
CYNTHIA VANESSA VARELA
113 DIXIE AVE W
IMMOKALEE, FL 34142

ZUNIGA, LUCY
115 N 1ST ST
IMMOKALEE, FL 34142

OQUINN, WILBUR DALE + JAMES W
O'QUINN + PRISCILLA DIANE
BETANCOURT
11596 SHEPARD HILL RD
WILLIS, TX 77318

DEVELOPMENT INVESTMENTS LLC
11752 PALM BEACH BLVD STE 100
FORT MYERS, FL 33905

CHIQUIA, MARIA
RAMIREZ CAROLINA+RAMIREZ CHIQUIA
118 WHITE WAY
IMMOKALEE, FL 34142

ANZUALDA, LAURA
119 N 9TH ST
IMMOKALEE, FL 34142

REALTY INCOME PROP 18, LLC
ATTN:PORTFOLIO MGMT #3132
11995 EL CAMINO REAL
SAN DIEGO, CA 92130

BARNHART, JUAN J
1201 JEFFERSON AVE W
IMMOKALEE, FL 34142

MAYS, JEFFERY S HAROLD L & DONNA
SUE MAYS
1201 SANTA ROSA AVE
IMMOKALEE, FL 34142

SOTO, VALERIO HERIBERTO SOTO
1123 MADISON AVE W
IMMOKALEE, FL 34142

MARTINEZ, MIGUEL & JUANITA
113 S 7TH ST
IMMOKALEE, FL 34142

NAVARRO, MARGARITA
115 N 9TH ST
IMMOKALEE, FL 34142

SANCHEZ, MARIA MARGARITA
116 DIXIE AVE W
IMMOKALEE, FL 34142

LOPEZ, ALBERTO
118 6TH ST
IMMOKALEE, FL 34142

SALINAS, MARIA
119 DIXIE AVE W
IMMOKALEE, FL 34142

ANZUALDA JR, JULIO & KATHY
119 N 9TH ST
IMMOKALEE, FL 34142

CORTES, PEDRO CANTERO
RODRIGO HUAPILLA
120 DIXIE AVE W
IMMOKALEE, FL 34142

CAMPUZANO, GERARDO & CLAUDIA
1201 NEW MARKET RD W
IMMOKALEE, FL 34142

VILLA, FRANCISCO & IDOLINA R
1203 BUSH ST E
IMMOKALEE, FL 34142

BRAVO, MARIA
MAGDALENA JUAN + GARCIA PEREZ
113 5TH ST
IMMOKALEE, FL 34142

SWAIN, JOHN W
1130 E HYDE PARK BLVD APT 1
CHICAGO, IL 60615

MARTINEZ-CERVANTES, JOSE
1155 W MAIN ST
IMMOKALEE, FL 34142

MARINO, SALLY A
SAMANTHA A MOLINA
117 N 9TH ST
IMMOKALEE, FL 34142

DELEON, MARTHA LETICIA
OSCAR DELEON, SR
118 N 4TH ST
IMMOKALEE, FL 34142

L & M RENTALS OF IMMOKALEE LLC
119 N 9TH ST
IMMOKALEE, FL 34142

SOTO, IGNACIO G
119 NEW MARKET RD W
IMMOKALEE, FL 34142

CORTEZ, ADRIAN
120 S VERDA ST
CLEWISTON, FL 33440

212 NEW MARKET ROAD LLC
1201 ORCHID AVE
IMMOKALEE, FL 34142

DELISLE, STEVEN L & JANICE
1204 LAKE TRAFFORD RD
IMMOKALEE, FL 34142

ARREDONDO, PAULO & MARIA D
1204 NEW MARKET RD W
IMMOKALEE, FL 34142

CERVANTES, JACINTO
1204 WEST ROBERTS AVE
IMMOKALEE, FL 34142

QUINTANILLA, MANUEL & MARIA C
1205 LEE ST
IMMOKALEE, FL 34142

QUINTANILLA, MANUEL MA
CONCEPCION QUINTANILLA
1205 LEE STREET
IMMOKALEE, FL 34142

STURGEON JR, SAMUEL
IRMA STURGEON
1205 MADISON AVE
IMMOKALEE, FL 34142

STURGEON, IRMA D
SAMUEL STURGEON JR
1205 MADISON AVE W
IMMOKALEE, FL 34142

STURGEON JR, SAMUEL IRMA
DELAROSA STURGEON
1205 MADISON AVE W
IMMOKALEE, FL 34142

GLENDALE BIBLE BAPTIST CHURCH INC
1205 W MAIN ST
IMMOKALEE, FL 34142

JWO INVESTMENTS LLC
12050 SW 45TH ST
MIAMI, FL 33175

COLLINS PLAZA LLC
12050 SW 45TH ST
MIAMI, FL 33175

OQUINN, JAMES W
12050 SW 45TH ST
MIAMI, FL 33175

MENDOZA, MIGUEL & M SOCORRO M
1206 JEFFERSON AVE W
IMMOKALEE, FL 34142

VILLA, JOSE & ELBIA
1206 LEE ST
IMMOKALEE, FL 34142

VILLA, JOSE M & ELBA VILLA,
JOSE & ELBIA
1206 LEE ST
IMMOKALEE, FL 34142

LOPEZ, MARIO & ELDA
1206 NEW MARKET RD W
IMMOKALEE, FL 34142

SANDOVAL, ALFREDO E
MARTHA PEREZ DE SANDOVAL
1207 LEE ST
IMMOKALEE, FL 34143

FLORES, ISABEL & ORALIA FLORES,
ISABEL H & ORALIA R
1207 NEW MARKET RD W
IMMOKALEE, FL 34142

ROJAS, MARIO A
1208 TYLER AVE
IMMOKALEE, FL 34142

MARJORIE R HALL REV LIV TRUST
1209 LEE ST
IMMOKALEE, FL 34142

LA MEXICANA BAKERY INC
121 N 1ST ST
IMMOKALEE, FL 34142

LA CASA DULCE INC
121 NORTH 1ST ST
IMMOKALEE, FL 34142

ESCAMILLA, RAYMUNDO HUAPILLA
1210 LEE ST
IMMOKALEE, FL 34142

HERRERA, MELINDA
1211 LEE ST
IMMOKALEE, FL 34142

HERRERA, EVANGELINA
1211 LEE ST
IMMOKALEE, FL 34142

RINCON, JOSUE
1212 LEE ST
IMMOKALEE, FL 34142

RINCON, SENOVIA
1212 LEE ST
IMMOKALEE, FL 34142

MENDOZA, JOSE DEBORAH AVELAR
1212 TYLER AVE
IMMOKALEE, FL 34142

GARCIA, MARY ANN
1213 LEE ST
IMMOKALEE, FL 34142

AYALA, JESUS
1213 LEE ST
IMMOKALEE, FL 34142

GARCIA, MARY ANN
1213 LEE ST
IMMOKALEE, FL 34142

AYALA, JESUS
1213 LEE ST
IMMOKALEE, FL 34142

AYALA, MARY G
1213 LEE ST
IMMOKALEE, FL 34142

RICE, ROBERT J & DIANA L
1214 NEW MARKET RD W
IMMOKALEE, FL 34142

FROST INVESTMENTS LLC
1215 MUSKET LANE
FORT MYERS, FL 33912

FROST ASSETS LLC
12151 MUSKET LANE
FORT MYERS, FL 33912

RAMOS, HECTOR L & NYDIA E
1216 JEFFERSON AVE W
IMMOKALEE, FL 34142

RINCON JR, JOSUE
1216 LEE ST
IMMOKALEE, FL 34142

SUNNILAND GROVES LLC
1222 FORRESTER AVE
IMMOKALEE, FL 34142

JOHNSON, RICHARD & CAROLYN J +
RICHARD H JOHNSON +
KEVIN JOHNSON
1222 FORRESTER AVE
IMMOKALEE, FL 34142

JOHNSON, RICHARD & CAROLYN J
1222 FORRESTER AVE
IMMOKALEE, FL 34142

JOHNSON ET AL, RICHARD
JOHNSON, RICHARD
1222 FORRESTER AVE
IMMOKALEE, FL 34142

DARK INC
1222 FORRESTER AVE
IMMOKALEE, FL 34142

JOHNSON, RICHARD & JOYCE
1222 FORRESTER AVE
IMMOKALEE, FL 34142

JOHNSON, RICHARD
1222 FORRESTER AVE
IMMOKALEE, FL 34142

SMITH, J STOKES
C/O BENITEZ LAW GROUP P L
1223 E CONCORD ST
ORLANDO, FL 32803

BETHEL ASSEMBLY OF GOD INC
1225 W MAIN ST
IMMOKALEE, FL 34142

HERNANDEZ, JOEL
LEAL MINERVA + TREJO IBARRA
124 ZENITH CIR
FORT MYERS, FL 33913

MARTINEZ, REUBEN
HORALIA MARTINEZ
1248 ALLEGIANCE WAY
IMMOKALEE, FL 34142

HERNANDEZ, ADAN
HERNANDEZ, ADAM & MARIA DEL R
125 BROWN WAY
IMMOKALEE, FL 34142

CYPRESS CONST INC
1251 TAYLOR LANE EXT STE 6F
LEHIGH ACRES, FL 33936

JOHNSON FAMILY DEVELOPMENT LLC
1255 N 15TH ST STE 7
IMMOKALEE, FL 34142

INA LOUISE JOHNSON REV TRUST
1255 N 15TH ST STE 7
IMMOKALEE, FL 34142

TIP TOP TOMATO PACKERS INC
1255 N 15TH ST STE 7
IMMOKALEE, FL 34142

IMMOKALEE CHAMBER OF COMMERCE
INC
1255 N 15TH STREET #3
IMMOKALEE, FL 34142

ARREGUIN, ELIDA G
1258 BEST AVE
FORT MYERS, FL 33913

ORTIZ, MARIA DEL SOCORRO V
127 N 1ST ST
IMMOKALEE, FL 34142

CARRILLO, DAVID & JUANA
1275 IMMOKALEE DR
IMMOKALEE, FL 34142

HABITAT FOR HUMANITY
1288 NORTH TAMIAMI TRAIL
N FORT MYERS, FL 33903

F A AND C L OLROYD LIV TRUST
12923 WATERFORD CIR
FT MYERS, FL 33919

WILLIAMS FARM OF IMMOKALLE INC
1300 N 15TH ST STE 1
IMMOKALEE, FL 34142

PETE'S TRAILER PARK INC
1300 N 15TH ST STE 1
IMMOKALEE, FL 34142

SANCHEZ, JUAN O & PAMELA J
1300 ROBERTS AVE W
IMMOKALEE, FL 34142

SANCHEZ, JUAN O & PAMELA J
1300 ROBERTS AVE W
IMMOKALEE, FL 34142

CLARKE, AURORA M & EDWARD V
1301 SANTA ROSA AVE
IMMOKALEE, FL 34142

MONTES, MARY J
1302 IMMOKALEE DR
IMMOKALEE, FL 34142

FRABEL, JOHN
1302 LAKE TRAFFORD RD
IMMOKALEE, FL 34142

BLOCKER RANCH OF IMMOKALEE LLC
1303 NEW MARKET RD
IMMOKALEE, FL 34142

BLOCKER'S FURNITURE LLC
1303 NEW MARKET RD W
IMMOKALEE, FL 34142

K & B COMMERCIAL RENTALS #1
1303 NEW MARKET RD W
IMMOKALEE, FL 34142

K&B COMMERCIAL RENTALS #2 LLC
K&B COMMERCIAL RENTALS #3 LLC
1303 NEW MARKET RD W
IMMOKALEE, FL 34142

BLOCKER PROPERTIES OF TENNESSEE
INC
1303 NEW MARKET RD W
IMMOKALEE, FL 34142

K & B COMMERCIAL RENT #4 LLC
K & B COMMERCIAL RENT #5 LLC
1303 NEW MARKET RD W
IMMOKALEE, FL 34142

BLOCKER'S FURNITURE LLC
1303 NEW MARKET RD W
IMMOKALEE, FL 34142

K & B INVESTMENTS LF SW FL LLC
1303 NEW MARKET RD W
IMMOKALEE, FL 34142

BLOCKER RANCH OF IMMOKALEE LLC
1303 NEW MARKET RD W
IMMOKALEE, FL 34142

BLOCKER'S FURNITURE LLC
1303 NEW MARKET RD W
IMMOKALEE, FL 34142

BLOCKER, BRUCE A
1303 NEW MARKET RD W
IMMOKALEE, FL 34142

MOTEL 82 LLC
1303 NEW MARKET RD W
IMMOKALEE, FL 34142

BLOCKER, DEAN M
KENNETH BLOCKER JR
1303 NEW MARKET RD W
IMMOKALEE, FL 34142

D & K PROPERTY VENTURES INC
1303 NEW MARKET RD W
IMMOKALEE, FL 34142

BLOCKER PROPERTIES OF TENNESSEE
INC
1303 NEW MARKET RD W
IMMOKALEE, FL 34142

K&B RESIDENTIAL RENTALS #2 LLC
K & B RESIDENTIAL RENT #3 LLC + K&B
COMMERCIAL RENTALS #5 LLC
1303 NEW MARKET RD W
IMMOKALEE, FL 34142

DESTINE, JOCELYNE
1303 SANTA ROSA AVE
IMMOKALEE, FL 34142

BLOCKER RANCH OF IMMOKALEE LLC
1303 W NEWMARKET RD
IMMOKALEE, FL 34142

D & K PROPERTIES VENTURES INC
1303 WEST NEW MARKET ROAD
IMMOKALEE, FL 34142

AG-TRONIX INC
1304 N 15TH ST
IMMOKALEE, FL 34142

MENDOZA, GRACIANO
MENDOZA, SOTERO
1310 LAKE TRAFFORD RD
IMMOKALEE, FL 34142

PREFERRED MATERIALS INC
13101 TELECOM DR STE 101
TEMPLE TERRACE, FL 33637

COLLIER CNTY COMMUNITY
REDEVELOPMENT AGENCY
1320 N 15TH ST STE 2
IMMOKALEE, FL 34142

IMMOKALEE COMMUNITY
REDEVELOPMENT AGENCY
1320 NORTH A5TH ST
IMMOKALEE, FL 34142

JACKSON, VIOLENE S
JENNIFER CAMPBELL
1320 WILSON BLVD N
NAPLES, FL 34120

DERYA CORPORATION
13213 COUNTY ROAD 858
IMMOKALEE, FL 34142

INNOVATION CONSTRUCTION &
DEVELOPMENT LLC
136 NAPA RIDGE WAY
NAPLES, FL 34119

FRANCOIS, JOSEPH FERIO
136 NAPA RIDGE WAY
NAPLES, FL 34119

INNOVATION CONSTRUCTION &
DEVELOPMENT LLC
136 NAPA RIDGE WAY
NAPLES, FL 34119

DAMYS, JOSEPH & VENETTE M
1361 DESOTO BLVD S
NAPLES, FL 34117

MEDINA, TERESA
1380 LINCOLN CT
IMMOKALEE, FL 34142

JANE BROWN GRAVEYARD
1380 ROBERTS AVE W
IMMOKALEE, FL 34142

RODRIGUEZ, LUIS
13890 S SR 29
FELDA, FL 33930

HOLLAND, BRUCE & BECKY
1395 N 15TH ST
IMMOKALEE, FL 34142

FIRST BAPTIST CHURCH OF IMMOKALEE
INC
1411 LAKE TRAFFORD RD
IMMOKALEE, FL 34142

FIRST BAPT CH IMMOKALEE TR
1411 LAKE TRAFFORD RD
IMMOKALEE, FL 34142

BAILEY TR ET AL, C T FIRST BAPTIST
CHURCH OF IMMOKA
1411 LAKE TRAFFORD RD
IMMOKALEE, FL 34142

CARRILLO, CECILIO & JUANITA
1418 TANGERINE ST
IMMOKALEE, FL 34142

BIRD, JAMES R
1420 SANTA ROSA AVE
IMMOKALEE, FL 34142

BLOCKER, RICHARD & JEWEL
1435 CASE RD
LABELLE, FL 33935

CORTEZ, ANTONIO DULCE MARIA
MORALES
1475 N 15TH ST
IMMOKALEE, FL 34142

BALCOM INC
1500 AIRPORT RD S
NAPLES, FL 34104

GARGIULO INC
15000 OLD 41 N
NAPLES, FL 34110

JTM 3 LLC
1501 6TH AVE UNIT C
IMMOKALEE, FL 34142

IMMOKALEE FLA CONGREG OF
JEHOVAHS WITNESSES INC
1501 6TH AVE UNIT C
IMMOKALEE, FL 34142

JTM 3 LLC
1501 6TH AVE UNIT C
IMMOKALEE, FL 34142

HOWARD MOODY INVESTMENTS INC
1501 6TH AVE UNIT C
IMMOKALEE, FL 34142

RINKER MATERIALS WEST LLC
1501 BELVEDERE RD
WEST PALM BEACH, FL 33406

BENTON, OLGA E
1501 MCKINLEY AVE
LEHIGH ACRES, FL 33972

HUAPILLA-ZAPOTE, CIPRIANO
1507 7TH AVE
IMMOKALEE, FL 34142

AVALOS JR, MANUEL & RITA
1507 8TH AVE
IMMOKALEE, FL 34142

STAR MOBILE HOME PARK LLC
1507 IMMOKALEE DR
IMMOKALEE, FL 34142

ZAPOTE, CIPRIANO HUAPILLA
MARIBEL HUAPILLA
1508 7TH AVE
IMMOKALEE, FL 34142

ANEZ, DANIEL & GLORIA M
1509 STATE ROAD 29 S
IMMOKALEE, FL 34142

GROSS JR, LENDON H
1510 GROSS AVE
IMMOKALEE, FL 34142

GROSS, MARY ALICE
1511 GROSS AVE
IMMOKALEE, FL 34142

JACKSON ET AL, RENA BELL
1513 LIBERTY ST
HARRISBURG, PA 17103

DUPREE SR, GEORGE MARION
1513 ROBERTS AVE W
IMMOKALEE, FL 34142

MILLER JR, EUGENE K & TAMMY L
1513 STATE ROAD 29 S
IMMOKALEE, FL 34142

WILLIAMS TR, KIRBY & LINDA
WILLIAMS, KIRBY L & LINDA L
1515 WILLIAMS LN
IMMOKALEE, FL 34142

KEEN, JIMMY & RUBY
1521 ROBERTS AVE W
IMMOKALEE, FL 34142

LEAMAN, DELIA V RUTLEDGE
1521 ROBERTS AVE W
IMMOKALEE, FL 34142

CALDWELL, ELVIRA
1523 GROSS AVE
IMMOKALEE, FL 34142

SALDIVAR, JENNIFER
1600 7TH AVE
IMMOKALEE, FL 34142

MARTINEZ, JESUS CONCEPCION
MARTINEZ, ARACELI VENEGAS
1602 6TH AVE
IMMOKALEE, FL 34142

LOZANO JR, ARTEMIO & HILDA R
1602 PALM AVE
IMMOKALEE, FL 34142

MEDRANO JR, MARTIN
1603 8TH AVE
IMMOKALEE, FL 34142

RODRIGUEZ, MARIA
CARMEN DELFINA RODRIGUEZ
1604 5TH AVE
IMMOKALEE, FL 34142

OCANAS, ARMANDO
1604 7TH AVE
IMMOKALEE, FL 34142

JIMENEZ, GREGORIO & CELIA
1604 W IMMOKALEE DR
IMMOKALEE, FL 34142

JACKSON SR, MICHAEL & BRENDA
1606 IMMOKALEE DR
IMMOKALEE, FL 34142

GOMEZ, JAIME & EDELIA
1607 8TH AVE
IMMOKALEE, FL 34142

TAYLOR, CLARENCE E & MILDRED
1608 6TH AVE
IMMOKALEE, FL 34142

RICE, CHARLES E
GRACIELA C GONZALEZ
1609 LAKE TRAFFORD RD
IMMOKALEE, FL 34142

SANCHEZ, SANTANA & TAMMY
1610 5TH AVE
IMMOKALEE, FL 34142

DUPREE, JOSEPH C
1611 6TH AVE
IMMOKALEE, FL 34142

ROYAL CONSOLIDATED PROPS INC
165 SOUTH LEE ST #100
LABELLE, FL 33935

OKEECHOBEE INN LTD
165 SOUTH LEE ST #100
LABELLE, FL 33935

BLOCKER SR, CLEVELAND A
CAROLYN J BLOCKER
1650 OQUINN RD
IMMOKALEE, FL 34142

GARZA JR, ALBERTO & ALMA A
1660 O QUINN RD
IMMOKALEE, FL 34142

NUNEZ, GARY & LUCINDA V
1701 IMMOKALEE DR
IMMOKALEE, FL 34142

MIRALLES, ALFREDO
1703 IMMOKALEE DR
IMMOKALEE, FL 34142

ORTIZ, IRENE
1705 5TH AVE
IMMOKALEE, FL 34142

DIAZ, SALMOMON & ANGELA
1707 5TH AVE
IMMOKALEE, FL 34142

CALEXICO INC
17906 COYOTE LN
ANDERSON, CA 96007

COLLIER CNTY HOUSING AUTHORITY
1800 FARM WORKER WAY
IMMOKALEE, FL 34142

LAGUNES, MARIA ANGELITA JUAREZ
1806 OQUINN RD
IMMOKALEE, FL 34142

RODRIGUEZ, MARIA ANGELICA
1808 GRANT AVE
IMMOKALEE, FL 34142

TREVINO, SAN JANIE
1824 LINCOLN AVE
IMMOKALEE, FL 34142

J BRIAN RESIDENTIAL RENTALS
J B COMMERCIAL RENTALS LLC
1830 16TH ST NE
NAPLES, FL 34120

J BRIAN HOMES LLC
1830 16TH ST NE
NAPLES, FL 34120

J & K RENTAL VENTURES LLC
1830 16TH ST NE
NAPLES, FL 34120

MTMC INC
1855 VETERANS PARK DR # 203
NAPLES, FL 34109

BROWN, ROY A & REBECCA
18597 MARCO BLVD
FORT MYERS, FL 33967

BREITBURN FLORIDA INC
C/O ANDREWS & COMPANY
1900 DALROCK RD
ROWLETT, TX 75088

AMIGOS EN CRISTO INC
19168 DOGWOOD RD
FORT MYERS, FL 33967

J&B RENTALS OF IMMOKALEE LLC
19301 IMMOKALEE ROAD
NAPLES, FL 34120

TREVINO, ROBERTO A
1950 STATE ROAD 82
IMMOKALEE, FL 34142

ST MATTHEW'S HOUSE INC
2001 AIRPORT RD S
NAPLES, FL 34112

WATSON, ROGER L & JO ANN
2002 STATE ROAD 82
IMMOKALEE, FL 34142

ADAME, BELEN G
201 CALLE AMISTAD
IMMOKALEE, FL 34142

PRATHER EST, GERALDINE
HODGES GLADUS MOORE
202 EUSTIS AVE
IMMOKALEE, FL 34142

RAMIREZ, SILVERIO P & JOSEFINA
202 MADISON AVE W
IMMOKALEE, FL 34142

ALVARADO, JOSE ELIUD TREJO
202 S 9TH ST
IMMOKALEE, FL 34142

GONZALEZ EST, AURELIA
203 CALLE AMISTAD
IMMOKALEE, FL 34142

YOUNG EST, HARRY
C/O IDA ALLEN
203 COLORADO AVE
IMMOKALEE, FL 34142

CHAPMAN FRUIT CO INC
203 OAK ST
IMMOKALEE, FL 34142

MANZANO ET AL, ARTURO
203 S 7TH ST
IMMOKALEE, FL 34142

ESTRADA, CARLOS P LEMUS
204 MADISON AVE W
IMMOKALEE, FL 34142

MORAN, HERLINDA GENOVEVA
MORENO-MORAN
204 N 9TH ST
IMMOKALEE, FL 34142

MARTINEZ, ERASMO & DOLORES
206 N 8TH ST
IMMOKALEE, FL 34142

GALVAN, TOMASA
MARTA A GALVAN
206 W MADISON AVE
IMMOKALEE, FL 34142

SOUTHERN CORPORATE PACKERS INC
2061 GLOBAL DR
IMMOKALEE, FL 34142

HERNANDEZ, ESMERALDA
207 CALLE AMISTAD
IMMOKALEE, FL 34142

ORTIZ, MARIA D
207 N 8TH ST
IMMOKALEE, FL 34142

AYALA, VIRGINIA + MARY ANN GARCIA
+ NORA AYALA
207 WASHINGTON AVE
IMMOKALEE, FL 34142

AYALA, NORA MATEO F AYALA
207 WASHINGTON AVE
IMMOKALEE, FL 34142

AYALA, MATEO + AYALA, CLARA
207 WASHINGTON AVE
IMMOKALEE, FL 34142

GARCIA, MARY ANN + NORA AYAL +
VIRGINIA AYALA
207 WASHINGTON AVE
IMMOKALEE, FL 34142

AYALA, NORA
207 WASHINGTON AVE
IMMOKALEE, FL 34142

AYALA, MATEO
207 WASHINGTON AVE
IMMOKALEE, FL 34142

DUMAS EST, MARIE G
208 E DELAWARE AVE
IMMOKALEE, FL 34142

AZTECA SUPERCENTRO 2000 INC
208 W MAIN ST
IMMOKALEE, FL 34142

BARTOLOME, JUAN BARTOLOME-
MATIAS, MIGUEL
2087 SE HARRISON ST
STUART, FL 34997

CARDENAS, ANA LILIA
ANSELMO ALVAREZ
209 S 7TH ST
IMMOKALEE, FL 34142

MARTINEZ, MARIA
2095 REVELLO ST
IMMOKALEE, FL 34142

ARTEAGA, ERIC
210 MADISON AVE W
IMMOKALEE, FL 34142

THOMAS, ANNIE MAR
210 S 3RD ST
IMMOKALEE, FL 34142

DUPREE ET AL, GEORGE
210 SEMINOLE ST
IMMOKALEE, FL 34142

OSTELAZA-SERRANO EST, FELIX
OSTELAZA-SERRANO, CONCEPCION
211 CALLE AMISTAD
IMMOKALEE, FL 34142

GEORGES, HULDA
211 W MAIN ST
IMMOKALEE, FL 34142

SALMON, MALCOLM M
2113 REVELLO ST
IMMOKALEE, FL 34142

MERVILUS, NANNCIE & CELIUS
212 E DELAWARE AVE
IMMOKALEE, FL 34142

GONZALEZ ET UX, FELIX
213 CALLE AMISTAD
IMMOKALEE, FL 34142

ARAGON, JOSE MANUEL
MARIA M DELAROSA
213 N 9TH ST
IMMOKALEE, FL 34142

CRUZ, JUAN
213 SEMINOLE ST
IMMOKALEE, FL 34142

CORDERO, MANUEL
214 MADISON AVE W
IMMOKALEE, FL 34142

FLORIDA STATE UNIVERSITY BOARD OF
TRUSTEES
214 WESTCOTT BLDG
TALLAHASSEE, FL 32306

CHIMAL, MARY ANN B
216 N 9TH ST
IMMOKALEE, FL 34142

GRIMALDO, DALILA
217 N 5TH ST
IMMOKALEE, FL 34142

CCW82 LLC CULLEN Z & CONSTANCE J
WALKER
2170 LOGAN BLVD N
NAPLES, FL 34119

IMMOKALEE CONG OF JEHOVAH
WITNESSES INC
2179 REVELLO ST
IMMOKALEE, FL 34142

MC CONNELL, JAMES A & KATHRYN
2179 REVELLO ST
IMMOKALEE, FL 34142

DE LA ROSA III, ANDRES
DE LA ROSA, JERRY
218 N 3RD ST
IMMOKALEE, FL 34142

DE LA ROSA III, ANDRES
218 NORTH 3RD ST
IMMOKALEE, FL 34142

MARTINEZ, JOSE
218 W MAIN ST
IMMOKALEE, FL 34142

MARTINEZ JR, CAMILO
2181 CHADWICK CIRCLE
IMMOKALEE, FL 34142

GALVAN, JORGE GABRIELA AYALA
2189 EXPERIMENTAL RD
IMMOKALEE, FL 34142

VENCES, JUAN JESUS
MARIA MINERVA VENCES
220 LOUIS AVE
LEHIGH ACRES, FL 33936

LAGUNES, MARIA DE LAS LUS
2200 OQUINN RD
IMMOKALEE, FL 34142

MARTHA JOE GROSS LIV TRUST
22221 LUCKEY LEE LANE
ALVA, FL 33920

CARRILLO, ESTEBAN A
223 N 2ND ST
IMMOKALEE, FL 34142

VASQUEZ, CHRISTINA
225 N 2ND ST
IMMOKALEE, FL 34142

HELENA CHEMICAL CO SE
225 SCHILLING BLVD STE 300
COLLIERVILLE, TN 38017

HOWELL, DOROTHY L
CECIL R HOWELL JR
2324 STATE ROAD 82
IMMOKALEE, FL 34142

IMMOKALEE INVESTMENT CORP
2390 TAMIAMI TRAIL N STE 102
NAPLES, FL 34103

SEC'Y OF HOUSING & URBAN DEV
INFORMATION SYSTEMS NETWORK +
SHEPHERD MALL OFFICE COMPLEX
2401 NW 23RD ST STE 1-D
OKLAHOMA CITY, OK 73107

MAYHOOD, SUE DAVID MAYHOOD
24020 PRODUCTION CIR
BONITA SPRINGS, FL 34135

MULLINS, JOY L
2475 STATE ROAD 29 S
IMMOKALEE, FL 34142

EXCHANGERIGHT NET LEASED
PORTFOLIO 8 DST
251 S LAKE AVE # 520
PASADENA, CA 91101

ROSILLO, JOSE LUIS
2520 RANDALL BLVD
NAPLES, FL 34120

ROSILLO, JOSE L ROSILLO,
MIGUEL CHAVEZ
2520 RANDALL BLVD
NAPLES, FL 34120

CRAPSE, OTIS & ANITA
HAROLD AND LAISA CRAPSE
2525 STATE ROAD 29 S
IMMOKALEE, FL 34142

CRAPSE, RALPH D & NANCY L
2525 STATE ROAD 29 S
IMMOKALEE, FL 34142

COLLIER LAND HOLDINGS LTD
2550 GOODLETTE RD N #100
NAPLES, FL 34103

CDC LAND INVESTMENTS INC
2550 GOODLETTE RD N #100
NAPLES, FL 34103

COLLIER LAND HOLDINGS LTD
2550 GOODLETTE RD N #100
NAPLES, FL 34103

BARRON COLLIER PTNRSH LLLP
2600 GOLDEN GATE PKWY
NAPLES, FL 34105

CSG GROUP LLC
2600 GOLDEN GATE PKWY
NAPLES, FL 34105

BARRON COLLIER PARTNERSHIP LLP
2600 GOLDEN GATE PKWY # 200
NAPLES, FL 34105

PENINSULA IMPROVEMENT CORP
2600 GOLDEN GATE PKWY STE 200
NAPLES, FL 34105

SILVER STRAND III PARTNERSHIP
2600 GOLDEN GATE PKWY STE 200
NAPLES, FL 34105

BARRON COLLIER PARTNERSHIP
2600 GOLDEN GATE PKWY STE 200
NAPLES, FL 34105

ZONAS TR, J COLLIER
DIXIE STREET TRUST
2614 TAMIAMI TRL N PMB 617
NAPLES, FL 34103

PG IMMOKALEE HOLDINGS LLC
2650 AIRPORT RD S STE H
NAPLES, FL 34112

ALPHA MED CAPITAL LLC
2665 OAK RIDGE CT
FT MYERS, FL 33901

CREWS, JIMMIE LEE
JANET LEIGH WHIDDEN
2728 STATE ROAD 82
IMMOKALEE, FL 34142

RAMOS, SALVADOR
NUNEZ NIDIA + POLANCO ANGEL
2769 STATE ST
IMMOKALEE, FL 34142

DE LA ROSA, ISABEL
2784 STATE ST
IMMOKALEE, FL 34142

ZAMORA, JAIME M
2785 STATE ST
IMMOKALEE, FL 34142

HERRERA, MIGUEL A & HILDA
2799 STATE ST
IMMOKALEE, FL 34142

COCHRAN, GEORGE W & JOANN
2800 STATE ROAD 82
IMMOKALEE, FL 34142

IBARRA, GUADALUPE & GLORIA
2809 STATE ST
IMMOKALEE, FL 34142

PRESLEY, KATHLEEN
2810 STATE ST
IMMOKALEE, FL 34142

PRESLEY, RICHARD Q & KATHLEEN
2810 STATE ST
IMMOKALEE, FL 34142

PEREZ, ANA MARIA
ALAN DEJESUS PEREZ
2811 STATE ST
IMMOKALEE, FL 34142

FLORES, IGNACIO
2824 STATE ST
IMMOKALEE, FL 34142

TREJO, JAIME CAMPOS
MELANIA A TREJO
29101 HUDSON CORNER RD
MARION, MD 21838

LULHN FOUR INC
2950 GATEWAY CENTRE BLVD
MORRISVILLE, NC 27650

YSLAS, NICOLE
300 MADISON AVE W
IMMOKALEE, FL 34142

CROP PRODUCTION SERVICES INC
ATTN TAX DEPT
3005 ROCKY MOUNTAIN AVE
LOVELAND, CO 80538

TCW ENTERPRISES LLC
301 N 15TH ST
IMMOKALEE, FL 34142

BLOCKER & LEWIS ENTER INC
301 N 15TH ST
IMMOKALEE, FL 34143

WILLIAMS JR, CHARLIE JAMES
301 ROSE AVE
IMMOKALEE, FL 34142

MARTINEZ, ANGEL
301 WEEKS TER
IMMOKALEE, FL 34142

LOPEZ, YERANIA + JOSE PEREZ +
JORGE PEREZ
3011 ORANGE GROVE TRL
NAPLES, FL 34120

CANTU, MARY D
302 13TH ST SE
IMMOKALEE, FL 34142

NAVARRO, NOAH
302 WEEKS TER
IMMOKALEE, FL 34142

PIERRE, CARMELIA
303 CALLE AMISTAD
IMMOKALEE, FL 34142

ORONA EST, FLORINDA B
304 13TH ST SE
IMMOKALEE, FL 34142

SANCHEZ, DAVID + ERNESTINA PEREZ +
JOSE SANCHEZ
304 MADISON AVE W
IMMOKALEE, FL 34142

SANCHEZ, JOSE
304 MADISON AVE W
IMMOKALEE, FL 34142

NAVARRO, AMY & ROBERT
304 WEEKS TER
IMMOKALEE, FL 34142

ALVAREZ, JUAN JOSE & OLGA
305 CALLE AMISTAD
IMMOKALEE, FL 34142

ST CYR, THERESE
305 ROSE AVE
IMMOKALEE, FL 34142

DIAZ, JESUS & IRIS
305 S 1ST ST
IMMOKALEE, FL 34142

MEDRANO, JOSEFINA
MELISSA MANCHA
306 MADISON AVE W
IMMOKALEE, FL 34142

PEREZ, CARLOS F & PAULA
306 ROSE AVE
IMMOKALEE, FL 34142

DORSAINT, LOUICESSE & MARIA
306 W DELAWARE AVE
IMMOKALEE, FL 34142

BARFIELD, MARY ALICE
3065 STATE ROAD 29 N
IMMOKALEE, FL 34142

GONZALEZ, GLENDA
307 CALLE AMISTAD
IMMOKALEE, FL 34142

HERRERA, DANIEL
GLENDA GONZALEZ
307 CALLE AMISTAD
IMMOKALEE, FL 34142

JACKSON ET AL, RENA BELL
307 S 2ND ST
IMMOKALEE, FL 34142

ANZUALDA, LUCIA
308 ROSE AVE
IMMOKALEE, FL 34142

ESCAMILLA, IRENE HUAPILLA
309 CALLE AMISTAD
IMMOKALEE, FL 34142

ADOLPHE, DANIEL & CLAUDINE
309 ROSE AVE
IMMOKALEE, FL 34142

ANZUALDA JR, FEDERICO
LUCIA ANZUALDA
310 ROSE AVE
IMMOKALEE, FL 34142

CASTRO JR, LUIS
GUADALUPE BUITRON
311 PRICE ST
IMMOKALEE, FL 34142

ANZUALDA, ELOY & MARIA H
312 ROSE AVE
IMMOKALEE, FL 34142

RODRIGUEZ, MARIA A
ANNA ROSA ANZUAKLA
312 ROSE AVE
IMMOKALEE, FL 34142

ANZUALDA, MARIA H
MARIA A RODRIGUEZ
312 ROSE AVE
IMMOKALEE, FL 34142

HERNANDEZ, ANGELICA
313 CALLE AMISTAD
IMMOKALEE, FL 34142

IBO LLC
313 NIXON DR
IMMOKALEE, FL 34142

GUTIERREZ, TRINIDAD BAUTISTA-
DIEGO, MARGARITA
313 PRICE ST #B
IMMOKALEE, FL 34142

RUBIO EST, PHILLIPA A + RUBIO, PABLO
+ RAMON CASTRO
313 PRICE ST UNIT A
IMMOKALEE, FL 34142

AVALOS, MICHELLE
313 ROSE AVE
IMMOKALEE, FL 34142

CHENEY, LINDA
314 MADISON AVE W
IMMOKALEE, FL 34142

MARTINEZ, EUSEBIA M
314 PRICE ST
IMMOKALEE, FL 34142

FLORIDA PACKING LLC
315 NEW MARKET RD
IMMOKALEE, FL 34142

IMMOKALEE PACKING LLC
315 NEW MARKET RD E
IMMOKALEE, FL 34142

FARM-OP INC
315 NEW MARKET RD E
IMMOKALEE, FL 34142

FLORIDA PACKING LLC
315 NEW MARKET RD E
IMMOKALEE, FL 34142

FARM-OP INC
315 NEW MARKET RD E
IMMOKALEE, FL 34142

ARMSTRONG EST, RICHARD
315 WEEKS TER
IMMOKALEE, FL 34142

ORTIZ, BENANCIO
316 PRICE ST
IMMOKALEE, FL 34142

RODRIGUEZ, ANGELITA + MARTA
VASQUEZ + CHRISTOPHER OLGIN
316 WEEKS TERRACE
IMMOKALEE, FL 34142

GROSS, JOANNE R
BRIDGETTE L GROSS
3160 WAY BACK RD
IMMOKALEE, FL 34142

LEDEZMA, VICTOR H & VERONICA
317 PRICE ST
IMMOKALEE, FL 34142

LEDEZMA, VICTOR
HUGO VERONICA LEDEZMA
317 PRICE STREET
IMMOKALEE, FL 34142

CORTEZ, ANTONIO & MARIA M
317 WEEKS TER
IMMOKALEE, FL 34142

CASTRO, ROSA A ELOY ANZUALDA
318 PRICE ST
IMMOKALEE, FL 34142

CASTRO, RAMON G & ROSA M
318 PRICE ST
IMMOKALEE, FL 34142

ANZUALDA JR, ELOY
318 ROSE AVE
IMMOKALEE, FL 34142

IGLESIA PENTECOSTES LAESTRELLA
RESPLANDECIENTE INC
319 PRICE STREET
IMMOKALEE, FL 34142

LOPEZ, ELMER
319 WEEKS TER
IMMOKALEE, FL 34142

GALLEGOS, GENOVEVA M
320 ROSE AVE
IMMOKALEE, FL 34142

CUEVAS, MANUEL V
ANTONIA DE CUEVAS
321 ROSE AVE
IMMOKALEE, FL 34142

THURMOND, MARGARET +
LEWIS F FISH + H ALLEN FISH
321 W MAIN ST
IMMOKALEE, FL 34142

FISH, HENRY ALLEN & BARBARA
321 W MAIN ST
IMMOKALEE, FL 34142

TRI-MANAGEMENT CO
324 SW 16TH ST
BELLE GLADE, FL 33430

LUBREF EST, AMALIA
325 ROSE AVE
IMMOKALEE, FL 34142

VERA, FRANCISCO & MARIA JUANA
329 ROSE AVE
IMMOKALEE, FL 34142

COLLIER COUNTY BOARD OF COUNTY
COMMISSIONERS
3301 TAMIAMI TRL E
NAPLES, FL 34112

COLLIER CNTY ED SCOTT IMMOKALEE
AIRPORT
3301 TAMIAMI TRL E BLDG F
NAPLES, FL 34112

SCOTT, ED IMMOKALEE AIRPORT,
COLLIER CO
3301 TAMIAMI TRL E BLDG F
NAPLES, FL 34112

DUPERNA, ERZULIA
333 ROSE AVE
IMMOKALEE, FL 34142

COLLIER CNTY
C/O REAL PROPERTY MANAGEMENT
3335 TAMIAMI TR E, STE 101
NAPLES, FL 34112

DORCENT, MARIE ANNA
337 ROSE AVE
IMMOKALEE, FL 34142

DESIR, JOSUE & CLONIE
341 ROSE AVE
IMMOKALEE, FL 34142

KERLEK, DAVID
342 TRADEWINDS AVE
NAPLES, FL 34108

JEAN, GRANDOIT & JEANNE
345 ROSE AVE
IMMOKALEE, FL 34142

AYALA, CLARA A
3465 105H AVE SE
NAPLES, FL 34142

MACEANT, GRACIEUSE
349 ROSE AVE
IMMOKALEE, FL 34142

SOTO, ELICEO
3508 CARSON LAKE CIR
IMMOKALEE, FL 34142

SALINAS, IRENE
DIAZ, HABACUC J
35699 SW 188TH AVE
FLORIDA CITY, FL 33034

GONZALES, MANUEL & SHAVAWN L
3601 WESTCLOX ST
IMMOKALEE, FL 34142

GOPHER RIDGE I JOINT VENTURE
ATTN: RICH CHOMA - CONSOLIDATED
CITURS LTD PRNTR
3602 COLONIAL CT
FORT MYERS, FL 33913

BARNHART, BERNARDO
3751 SR 29
IMMOKALEE, FL 34142

BARNHART, JUAN & VERONICA
3751 STATE ROAD 29 N
IMMOKALEE, FL 34142

POSADA III, MARIO & LORAIN M
389 JOHN JIMMIE BLVD
IMMOKALEE, FL 34142

REECE EST, ANNIE EARL
C/O KATHRIVA TINDAL
4 W CLERMONT CT
FORT MYERS, FL 33916

SMITH EST, MARY
402 ROSE AVE
IMMOKALEE, FL 34142

PULIDO, FELIPA
403 MCBLACK ST
IMMOKALEE, FL 34142

RODRIGUEZ, SARAH
415 N 16TH ST
IMMOKALEE, FL 34142

GARZA, ENCARNACION & NANCY O
360 NANCY MOTLOW CT
IMMOKALEE, FL 34142

GOPHER RIDGE I JOINT VENTURE
ATTN: RICH CHOMA - CONSOLIDATED
CITURS LTD PRNTR
3602 COLONIAL CT
FORT MYERS, FL 33913

610 N 15TH STREET OWNER LLC
37-31 58TH ST
WOODSIDE, NY 11377

BARNHART, JUAN & VERONICA
3751 STATE ROAD 29 N
IMMOKALEE, FL 34142

BARNHART, JUAN
3751 STATE ROAD 29 N
IMMOKALEE, FL 34142

TIITF /ED UNIV FL UNIV OF FLA
EXP STATION - DEP DOUGLAS BLDG
3900 COMMONWEALTH BLVD
TALLAHASSEE, FL 32399

J & J SOUTHERN FARMS INC
4003 SEMINOLE PRATT WHITNEY RD
LOXAHATCHEE, FL 33470

REDLANDS CHRISTIAN MIGRANT
ASSOCIATION INC
402 W MAIN ST
IMMOKALEE, FL 34142

IMMOKALEE TIRES INC
404 N 15TH ST
IMMOKALEE, FL 34142

HUAPILLA, RODRIGO
420 N 11TH ST
IMMOKALEE, FL 34142

GONZALEZ, GUADALUPE & EVA +
JOSUE DANIEL GONZALEZ
3601 WESTCLOX ST
IMMOKALEE, FL 34142

COLLIER GROVES LTD
ATTN: RICH CHOMA - CONSOLIDATED
CITURS LTD PRNTR
3602 COLONIAL CT
FORT MYERS, FL 33913

REAL EST HOLDINGS OF TIENDA
MEXICANA INC
3740 LOWSON BLVD
DELRAY BEACH, FL 33445

BJ & J RENTALS LLC
3751 STATE ROAD 29 N
IMMOKALEE, FL 34142

GALLEGOS, IRMA JOVITA
388 CR830A
FELDA, FL 33930

IMMOKALEE REALTY HOLDINGS LLC
C/O HARDING AND CARBONE, INC
3903 BELLAIRE BLVD
HOUSTON, TX 77025

GLOBAL SIGNAL ACQUISITIONS IV
PMB 331
4017 WASHINGTON RD
MCMURRAY, PA 15317

LA SORIANA INC
4027 ALBANY RD
LABELLE, FL 33935

TIITF /FLORIDA DEPARTMENT OF
AGRICULTURE & CONSUMER SVCS
407 S CALHOUN STREET M-12
TALLAHASSEE, FL 32399

HINOJOSA, LUISA
420 N 17TH ST
IMMOKALEE, FL 34142

JOHNSON, MINNIE
421 N 17TH ST
IMMOKALEE, FL 34142

MERVILUS, ELISE
421 SCHOOL DR
IMMOKALEE, FL 34142

SAINCY, MONIQUE
423 15TH ST N
IMMOKALEE, FL 34142

DEWRELL, TRACEY & MARA
4231 PINE RIDGE ROAD
NAPLES, FL 34119

330 NEW MARKET LLC
4241 CORPORATE SQ
NAPLES, FL 34104

SANCHEZ, YOLANDA
43302 MARYMOUNT TER UNIT 202
ASHBURN, VA 20147

AVILA, JUAN
MARIA DEL SOCORRO AVILA
449 ROSE AVE
IMMOKALEE, FL 34142

GONZALEZ, MARTHA L
450 ROSE AVE
IMMOKALEE, FL 34142

CARRILLO, ILDEFONSO & ALICIA
454 ROSE AVE
IMMOKALEE, FL 34142

MARTINEZ, ROSA E
457 ROSE AVE
IMMOKALEE, FL 34142

BELLEGARDE, JEAN
JOSEPH R MELILA DUPERA
458 ROSE AVE
IMMOKALEE, FL 34142

D P R & ASSOCIATES LLC
4600 HORCE LINE
FT MYERS, FL 33905

EDME, MARIE
461 ROSE AVE
IMMOKALEE, FL 34142

MATHURIN, MARIE
462 ROSE AVE
IMMOKALEE, FL 34142

DESTINE, MARIE ODETTE
465 ROSE AVE
IMMOKALEE, FL 34142

LAROSE, LUCIENNE
466 ROSE AVE
IMMOKALEE, FL 34142

LEAL, ANABEL P
4671 LITTLE LEAGUE RD
IMMOKALEE, FL 34142

GENDEJAS, GILVERTO
4673 SW BULL POND ST
ARCADIA, FL 34266

STORE MASTER FUNDING IV LLC
VINTAGE PARTNERS
4705 S APOPKA VINELAND RD #210
ORLANDO, FL 32819

CAMARGO, CELSOS T & SANTA V
4741 VIREO LN
IMMOKALEE, FL 34142

PEREZ, SALVADOR & EVANGELINA
477 N 16TH ST
IMMOKALEE, FL 34142

FINKS TR, C GLENN + GERALDINE G
FINKS TR C GLENN FINKS R/L TRUST +
GERALDINE G FINKS R/L TRUST
479 LIVE OAK LN
LABELLE, FL 33935

CHAPARRO, NABOR
4805 MYERS RD
IMMOKALEE, FL 34142

CABRERA, RAMON NELSON CABRERA
4862 WEYMOUTH ST
LAKE WORTH, FL 33463

GHHM LLC
498 LABREE AVE S
LEHIGH ACRES, FL 33974

HERRERA, GUADALUPE & MARIBEL
498 LABREE AVE S
LEHIGH ACRES, FL 33974

CORPORATION OF THE PRESIDING
BISHOP/CHURCH OF JESUS CHRIST OF LATTER-
DAY SAINTS - LDS CH TX ADM FILE# 565-1646
50 E NORTH TEMPLE FL 22
SALT LAKE CITY, UT 84150

FRYSON, PHYLLIS
500 BREEZEWOOD DR
IMMOKALEE, FL 34142

SHIVSHAKTI ONE LLC
5012 PINETREE CIRCLE
LABELLE, FL 33935

REYES CRUZ, MERCEDES
502 2ND AVE
IMMOKALEE, FL 34142

JIRON, MAGGUIEL MARIA A RUIZ
502 JEFFERSON AVE W
IMMOKALEE, FL 34142

HERNANDEZ, ENRIQUE & REYNA
502 N 19TH ST
IMMOKALEE, FL 34142

IMMOKALEE FIRE CONTROL DIST
502 NEW MARKET RD E
IMMOKALEE, FL 34142

SHANTA LLC
504 E MAIN ST
IMMOKALEE, FL 34142

GRIMALDO, AGUSTIN MARIE DEL
CARMEN GRIMALDO
504 N 18TH ST
IMMOKALEE, FL 34142

YZAGUIRRE, ARMANDO
505 MADISON AVE W
IMMOKALEE, FL 34142

GORDILLO, SAMUEL J & MARIA M
505 NEW MARKET RD W
IMMOKALEE, FL 34142

BYRD, ANNIE P
506 PALM RIDGE DR
IMMOKALEE, FL 34142

LARA, GUILLERMO JUANA CRUZ
507 N 11TH ST
IMMOKALEE, FL 34142

GUADALUPE CENTER INC
509 HOPE CIR
IMMOKALEE, FL 34142

GARCIA, MARGARITO
509 MADISON AVE W
IMMOKALEE, FL 34142

GUTIERREZ, SAMUEL & OLGA
509 N 11TH ST
IMMOKALEE, FL 34142

WILLIAMS, MARY SANDERS
510 14TH ST N
NAPLES, FL 34102

THOMAS, ROBERT L SHEILA M SKINNER
510 N 11TH ST
IMMOKALEE, FL 34142

CRAFT, ELLEN G SHEILA M SKINNER
510 N 11TH ST
IMMOKALEE, FL 34142

CASTRO, LETICIA BECERRA
510 NEW MARKET ROAD W
IMMOKALEE, FL 34143

GOODWILL INDUST OF SW NMTC
RESOURCES I LLC
ATTN;ACCOUNTING #143
5100 TICE ST
FORT MYERS, FL 33905

ALMANZA, FERMIN & HILDA
5105 TAYLOR RD N
IMMOKALEE, FL 34142

GARFIAS, SANJUANA D
5108 DEER RUN RD
IMMOKALEE, FL 34142

GONZALEZ, JOSHUA JAVIER
513 MADISON AVE W
IMMOKALEE, FL 34142

RUNION, MELINDA D
514 NEW MARKET RD W
IMMOKALEE, FL 34142

MACKEY, ROBERT G & MARY J
5160 WILLIAM MILLS ST
JACKSONVILLE, FL 32226

VILLARREAL, MARIA
517 MADISON AVE W
IMMOKALEE, FL 34142

LOPEZ, LEIDA
519 ROOSEVELT AVE
LEHIGH ACRES, FL 33936

BARNHART, BERNARDO
5198 ROMA ST
AVE MARIA, FL 34142

MUNGUIA, MARY GRACIE
521 N 16TH ST
IMMOKALEE, FL 34142

LEAL HARVESTING & HAULING INC
5210 LAKE LANE
IMMOKALEE, FL 34142

DENISE LUJAN REV TRUST
5249 WHITTEN DR
NAPLES, FL 34104

PREMIER AMERICAN BANK
5301 BLUE LAGOON DR STE 200
MIAMI, FL 33126

DAVIS, DONALD & LINDA
540 NEW MARKET RD E
IMMOKALEE, FL 34142

WILLIAM J KUCZEK REV LIV TRUST
5492 SHARP DR
HOWELL, MI 48843

HBS FLORIDA SPECIALTIES LLC
5500 FLAGHOLE ROAD
CLEWISTON, FL 33440

MONTAS, CHARLES JEANNE EXILUS
560 JEFFERSON AVE W
IMMOKALEE, FL 34142

VILLA, LORENZO MUNGUIA
570 JEFFERSON AVE W
IMMOKALEE, FL 34142

SCHOOL DISTRICT-SR 29
SUPERINTENDENT
5775 OSCEOLA TRL
NAPLES, FL 34109

SCHOOL DISTRICT-VOE VILLAGE OAKS
ELEMENTARY - SUPERINTENDENT
5775 OSCEOLA TRL
NAPLES, FL 34109

VENEGAS, FELIX
MUNOZ CATALINA + VENEGAS DE
MUNOZ
600 DOAK AVE
IMMOKALEE, FL 34142

GONZALEZ, RUBEN
PAULA GONZALEZ
600 N 18TH ST
IMMOKALEE, FL 34142

OLESKY, EDWARD R
LAKE TRAFFORD MARINA
6001 LAKE TRAFFORD RD
IMMOKALEE, FL 34142

DEMPSEY, DAVID E & PANSY F
601 MADISON AVE W
IMMOKALEE, FL 34142

AVALOS, CLAUDIA
601 NEW MARKET RD W
IMMOKALEE, FL 34142

DELACRUZ, CARLOS
FIDEL ANA LAURA DELACRUZ
601 PALM RIDGE DR
IMMOKALEE, FL 34142

HERNANDEZ, ANGEL R & LORENA
602 GLADIOLA ST
IMMOKALEE, FL 34142

VASQUEZ, OLGA RESENDEZ IRMA
JOVITA GALLEGOS
602 JEFFERSON AVE W
IMMOKALEE, FL 34142

MARTINEZ, REY & EDITH
602 NES MARKET ROAD
IMMOKALEE, FL 34342

MARTINEZ, ALEXIS
602 NEW MARKET RD
IMMOKALEE, FL 34142

MARTINEZ, RAY
602 NEW MARKET RD W
IMMOKALEE, FL 34142

ADAME, VICTOR L & OLGA
603 GLADIOLA ST
IMMOKALEE, FL 34142

VOLCY, JEAN B & MARIE M
604 GLADIOLA ST
IMMOKALEE, FL 34142

RINCON, GENETTE & FRANCISCO
604 NASSAU ST
IMMOKALEE, FL 34142

RAYBURN, JERRY R & MARILYN A
604 NEW MARKET RD W
IMMOKALEE, FL 34142

BELLEVUE, ROSA LUXEMBERG MARIE
JOSELINE BELLEVUE DESIR
604 POINSETTIA ST
IMMOKALEE, FL 34142

MENDOZA, URIEL & MARIA
605 POINSETTIA ST
IMMOKALEE, FL 34142

CERELUS, PIERRE & MARIE M
606 NASSAU ST
IMMOKALEE, FL 34142

PASCUAL, DOMINGO & EULALIA L
608 GLADIOLA ST
IMMOKALEE, FL 34142

VELAZQUEZ, ROSENDO & NORA
609 GLADIOLA ST
IMMOKALEE, FL 34142

AYALA, JOSE U & NATVIDAD
609 MADISON AVE W
IMMOKALEE, FL 34142

EUGENIO T HERRERA SR REV TRUST
610 BOOKER BLVD
IMMOKALEE, FL 34142

GRIFFIN, LEILA R
610 GLADIOLA ST
IMMOKALEE, FL 34142

TAYLOR, CLAUDIUS & RUBY LEE
610 SE 10TH ST
STUART, FL 34994

LAGUNA, SENaida
611 GLADIOLA ST
IMMOKALEE, FL 34142

RODRIGUEZ, FRANCISCO & ELSA
611 MADISON AVE W
IMMOKALEE, FL 34142

MOODY, JIM H & ARLENE
611 MANATEE ST
IMMOKALEE, FL 34142

ESCOBEDO, ARMANDO
611 NEW MARKET RD W
IMMOKALEE, FL 34142

SHIRLEY, KAREN C
612 GLADIOLA ST
IMMOKALEE, FL 34142

EMBRIZ, ALEJANDRA BRITO
612 JEFFERSON AVE W
IMMOKALEE, FL 34142

GARCIA, DANIEL & MARIA ELENA
612 NASSAU ST
IMMOKALEE, FL 34142

GARCIA, RAYMOND & MARTA
612 NASSAU ST
IMMOKALEE, FL 34142

GARCIA, ROBERTO & MARY E
612 POINSETTIA ST
IMMOKALEE, FL 34142

RODRIGUEZ, MANUEL A & ADELINA
613 MADISON AVE W
IMMOKALEE, FL 34142

FAMILY PRAYER CENTER INC
615 NASSAU ST
IMMOKALEE, FL 34142

LIEB, JACOB H & ROCHELLE Z
616 NASSAU ST
IMMOKALEE, FL 34142

DE LA ROSA, NORBERTO
JOSEFA DE LA ROSA
616 POINSETTIA ST
IMMOKALEE, FL 34142

ZHANG, CINDY ZONG XING TANG
6260 ARC WAY
FT MYERS, FL 33966

JAIMES, DELFINO
627 CLIFTON RD
IMMOKALEE, FL 34142

S T O F HOLDINGS LTD
6300 STIRLING RD
HOLLYWOOD, FL 33024

MC INTURF ENTERPRISES INC
6300 STIRLING RD
HOLLYWOOD, FL 33024

LUNA, JACINTO ANGELA VICKERY
631 N 9TH ST
IMMOKALEE, FL 34142

INT'L EVANGELICAL CHURCH OF THE
SOLDIERS OF THE - CROSS OF CHRIST
641 W FLAGLER ST
MIAMI, FL 33130

HINOJOSA, CYNTHIA
6425 40TH ST NE
NAPLES, FL 34120

GARCIA, CRESCENCIO LOPEZ
671 12TH AVE NE
NAPLES, FL 34120

SUNCOAST SCHOOLS FED CR UNION
6801 E HILLSBOROUGH AVE
TAMPA, FL 33610

PROPERTIES OF S&O LLC
6821 DEVONWOOD DRIVE
FORT MYERS, FL 33908

RIB CITY IMMOKALEE INC
6830 SHOPPES AT PLANTATION DR
UNIT 2
FORT MYERS, FL 33912

CARRILLO, CHRISTINA PATRICIA
KATHLEEN SCHWARZ
6833 GARLAND STREET
FT MYERS, FL 33966

PEREZ, JOSE LUIS RAFAEL
690 N 16TH ST
IMMOKALEE, FL 34142

5ARDINES, REINALDO & ZORAIDA
7 CREEK CIRCLE
IMMOKALEE, FL 34114

MANCHA, HERMINIA
701 MADISON AVE W
IMMOKALEE, FL 34142

HERNANDEZ, ANADELIA
702 JEFFERSON AVE W
IMMOKALEE, FL 34142

CRUMP, JOYCE C
702 NASSAU ST
IMMOKALEE, FL 34142

507 NEWMARKET ROAD EAST LLC
7027 W BROWARD BLVD # 302
PLANTATION, FL 33317

NAVARRO, OSCAR
703 MADISON AVE W
IMMOKALEE, FL 34142

RAMIREZ JR, FERNANDO & MYITA
704 GLADES ST
IMMOKALEE, FL 34142

SAINT JEAN, YVROSE
SYLVESTRE, WOODLY
704 N 17TH ST
IMMOKALEE, FL 34142

RIVERA SR, VICTOR M & MARIA
705 NEW MARKET RD W
IMMOKALEE, FL 34142

NULL, JUDITH ANN
706 JEFFERSON AVE W
IMMOKALEE, FL 34142

NULL, ESTIL ERNEST
706 JEFFERSON AVE W
IMMOKALEE, FL 34142

NIETO, ARMANDO & NORMA
706 NEW MARKET RD W
IMMOKALEE, FL 34142

PLATA, JOSE ANTOLIN
708 NEW MARKET RD W
IMMOKALEE, FL 34142

POOJA BUSINESS INC
7090 PENZANCE BLVD
FT MYERS, FL 33966

LOZANO, MIGUEL A & MARIA G
710 NEW MARKET RD W
IMMOKALEE, FL 34142

MENCIA'S RESTAURANT INC
7-10 OAK ST
FAIRLAWN, NJ 07410

OBREGON, ESTEBAN & MARIA D
711 NEW MARKET RD W
IMMOKALEE, FL 34142

HENDRY, R BRUCE & KAREN M
711 W MAIN ST
IMMOKALEE, FL 34142

GRAJO IMAGING CONSULTANTS LLC
718 WILLOWOOD LN
NAPLES, FL 34108

COLLIER 15TH ST TRUST
720 GOODLETTE RD N # 304
NAPLES, FL 34102

1202 NEW MARKET RD TRUST
720 GOODLETTE RD N # 304
NAPLES, FL 34102

805 PINE CT TRUST
720 GOODLETTE RD N # 304
NAPLES, FL 34102

100 MADISON AVE TRUST
720 GOODLETTE ROAD N #304
NAPLES, FL 34102

1009 ALACHUA ST TRUST
720 GOODLETTE ROAD N STE 304
NAPLES, FL 34102

STARLING JR, H B & BERNADETTE
720 N 15TH ST
IMMOKALEE, FL 34142

NILKANTH HOSPITALITY INC
721 N 15TH ST
IMMOKALEE, FL 34142

JONES, FLOZELL
732 LAUREN LN UNIT 106
IMMOKALEE, FL 34142

GADSDEN, JAMES
SCOTTIE L GADSDEN GRDN
734 BIANCA
LEHIGH ACRES, FL 33974

POPEJOY TR, WILLA S W HERMAN &
HOLLY J SPOONER TR
750 EAGLE RD
WAXHAW, NC 28173

HERNANDEZ, CARLOS & MELINDA M
7540 NE CUBITIS AVE
ARCADIA, FL 34266

OAKES FARMS TOMATO REPACK LLC
7695 SANTA CRUZ CT
NAPLES, FL 34109

W STEWART CONNARD TRUST
800 LAMBIANCE CIR APT 205
NAPLES, FL 34108

GOMEZ, NEIVIO F
801 GLADES ST
IMMOKALEE, FL 34142

VILLA, ADOLFO & CLAUDIA
802 JEFFERSON AVE W
IMMOKALEE, FL 34142

CERDA, ARNULFO BERTHA CERDA-
LUNA
802 LEE ST
IMMOKALEE, FL 34142

HINOJOSA ET AL, ORALIA
802 PINE CT
IMMOKALEE, FL 34142

MC GILL, FLOYD R & REBECCA A
803 MADISON AVE W
IMMOKALEE, FL 34142

MARTINEZ, LORENZO R & EVA J
803 MANATEE ST
IMMOKALEE, FL 34142

REYNA JR, RUBEN & JENNIE D
803 MONROE ST
IMMOKALEE, FL 34142

OLVERA, RAFAEL & NORMA
803 ROBERTS AVE W
IMMOKALEE, FL 34142

HUAPILLA, JUAN H & ANA PEREZ
804 JEFFERSON AVE W
IMMOKALEE, FL 34142

CASTILLO, ROSEMARY
805 COLORADO AVE
IMMOKALEE, FL 34142

SANCHEZ, ROSEMARY ERIC SANCHEZ
805 COLORADO AVE
IMMOKALEE, FL 34142

KENDALL, JENNIFER
805 JEFFERSON AVE W
IMMOKALEE, FL 34142

TREJO, YENI YARELI TREJO
805 NEW MARKET RD W
IMMOKALEE, FL 34142

GRIMALDO, GERARDO
808 JEFFERSON AVE W
IMMOKALEE, FL 34142

RAMIREZ, NORMA
809 JEFFERSON AVE W
IMMOKALEE, FL 34142

TREJO, BELEN + SUSIE LOPEZ TREJO +
MAURICIO LOPEZ TREJO
809 MADISON AVE W
IMMOKALEE, FL 34142

MC SWAIN, CARROLL
809 SW 22ND AVE
FORT LAUDERDALE, FL 33312

DE LEON, PORFIRIO VIRGINIA DE LEON
810 CREAGER ST
HOUSTON, TX 77034

RUIZ, MARTIN
810 HENDRY ST
IMMOKALEE, FL 34142

CHAVEZ, MANUEL VEGA GENOVEVA
MORENO MORAN
810 JACKSON ST
IMMOKALEE, FL 34142

LUVIANO, SAMUEL
810 KISSIMMEE ST
IMMOKALEE, FL 34142

HAMLETT, LARRY J & MELONIE S
810 MONROE ST
IMMOKALEE, FL 34142

MARTINEZ, ARMANDO & JUANA M
810 NEW MARKET RD W
IMMOKALEE, FL 34142

VILLA, ADOLFO & CLAUDIA
811 JEFFERSON AVE W
IMMOKALEE, FL 34142

RODRIGUEZ, MARTHA
811 MONROE CT
IMMOKALEE, FL 34142

BARNHART, ARMANDO & ANTONIA
811 NEW MARKET RD W
IMMOKALEE, FL 34142

HERNANDEZ, QUIRINO MARIA DE LOS
ANGELES HERNANDEZ
812 NASSAU ST
IMMOKALEE, FL 34142

HERNANDEZ, FABIAN
812 NASSAU ST
IMMOKALEE, FL 34142

MORIN, MARIA D
CARLOS A GONZALES DEL VALLE
812 NEW MARKET RD W
IMMOKALEE, FL 34142

AFANADOR, SIGFREDO & MIGDALIA
814 NEW MARKET RD W
IMMOKALEE, FL 34142

RODRIGUEZ, DANIEL O RODRIGUEZ,
MARIA DELOSREYES
815 NEW MARKET RD W
IMMOKALEE, FL 34142

REDUCINDO-CHAVEZ, ANDRES
REDUCINDO, MARIA E
817 NEW MARKET RD W
IMMOKALEE, FL 34142

GARCIA, MARIO A
820 N 15TH ST
IMMOKALEE, FL 34142

EID, ALI S
823 WILLOW SPRINGS CT
NAPLES, FL 34120

JAMES, GERMAINE KEISHARD
8231 WILSHIRE LAKE BLVD
NAPLES, FL 34109

EJ PROPERTIES LLC
8231 WILSHIRE LAKES BLVD
NAPLES, FL 34109

JAMES, JULIE
8231 WILSHIRE LAKES BLVD
NAPLES, FL 34109

MANDUJANO, JOSE V
825 GLADES ST
IMMOKALEE, FL 34142

WHERE THE HEART IS MNSTRY LLC
8250 LIRIOPE LOOP
LEHIGH ACRES, FL 33972

LAZO, CESAR A & ELBIRA K A WALLACE
INC TR
830 N 15TH ST
IMMOKALEE, FL 34142

CHAN, KAM FU & KEK MOOI
8404 LEMON RD
FORT MYERS, FL 33967

AYALA, NORA AYALA, MATEO F
855 MONROE ST
IMMOKALEE, FL 34142

CANTERO, ALBINO HUAPILLA ANATOLIA
HAUPILLA
856 PINE CT
IMMOKALEE, FL 34142

SANCHEZ, ANDRES TERESA CANALES
8624 E PARK
FORT MYERS, FL 33907

HENDRY LEE PROPERTIES LLC
870 W HICKPOCHEE AVE # 100
LABELLE, FL 33935

CARMENCITAS TO GO INC CARLOS
LANDEROS
901 CHARLOTTE ST
IMMOKALEE, FL 34142

TORRES, FRANCISCO J & CONSUELO
901 MADISON AVE W
IMMOKALEE, FL 34142

CANO, MARIBEL & RAUL
901 PINE STREET
IMMOKALEE, FL 34142

GARZA JR, ISMEAL & OLGA
901 ROBERTS AVE W
IMMOKALEE, FL 34142

MIRALLES, ALFREDO
902 JUNO DR
LEHIGH ACRES, FL 33936

FUTCH, LAURA R
902 N 15TH ST
IMMOKALEE, FL 34142

DIMAS, LARRY
903 CHARLOTTE ST
IMMOKALEE, FL 34142

QUIROZ, EVANGELINA R
903 PINE ST
IMMOKALEE, FL 34142

REYES, RAMIRO & DELIA
904 NEW MARKET RD W
IMMOKALEE, FL 34142

CONTRERAS, PAULA
905 PINE ST
IMMOKALEE, FL 34142

DAVENPORT ET UX, ROBERT E
DAVENPORT, ROBERT E & LYNETTE
9064 THE LN
NAPLES, FL 34109

GALVAN, JO ANN
907 PINE ST
IMMOKALEE, FL 34142

CINTRON EST, CARMEN B
908 GLADES ST
IMMOKALEE, FL 34142

LAFLEUR, MICHAEL A & HUELDA G
909 JEFFERSON AVE W
IMMOKALEE, FL 34142

MEZA, JOSE A
909 MADISON AVE W
IMMOKALEE, FL 34142

CLEDANOR, MIRACLE & YVANNA
910 NEW MARKET RD W
IMMOKALEE, FL 34142

RAMIREZ, NORMA
911 JACKSON ST
IMMOKALEE, FL 34142

MAGLOIRE, LAURETTE J
911 NEW MARKET RD W
IMMOKALEE, FL 34142

DESERPAS, SAIDA DOLORES RIVERA
911 PINE ST
IMMOKALEE, FL 34142

CONTRERAS, ADAN J & NORMA
912 INDIAN RIVER ST
IMMOKALEE, FL 34142

CARDENAS, JUAN & MARGARITA
912 JEFFERSON AVE W
IMMOKALEE, FL 34142

GUTIERREZ, JESUS
912 NEW MARKET RD W
IMMOKALEE, FL 34142

LEGRAND, ROSICA
912 PINE ST
IMMOKALEE, FL 34142

RUIZ, RAFAEL & CONSUELO
913 LAUREL ST
IMMOKALEE, FL 34142

MENDIETA, JOSE L & ANITA G
913 NEW MARKET RD W
IMMOKALEE, FL 34142

TURRUBIARTEZ, ADAM & MATILDA
913 PINE ST
IMMOKALEE, FL 34142

HERNANDEZ, AGUSTIN
914 PINE ST
IMMOKALEE, FL 34142

TREVINO, MARIA
915 PINE ST
IMMOKALEE, FL 34142

GARZA, ROSA GARZA, LEONEL
916 PINE ST
IMMOKALEE, FL 34142

GARZA ET AL, LEONEL
916 PINE ST
IMMOKALEE, FL 34142

GONZALEZ, RUBEN & SONIA
917 LAUREL STREET
IMMOKALEE, FL 34142

CISNEROS, ALMA R
SOLIS, ANGELITA
920 JEFFERSON AVE W
IMMOKALEE, FL 34142

JUAREZ, ANGELITA TREVINO + MARIA
DELALUZ RUEDA +
CYNTHIA C HINOJOSA
920 NEW MARKET RD W
IMMOKALEE, FL 34142

DE LA LUZ RUEDA, MARIA CYNTHIA
CHRISTINE HINOJOSA
920 NEW MARKET RD W
IMMOKALEE, FL 34142

KEMP, INVESTMENTS INC
95 17TH ST SW
NAPLES, FL 34117

KEMP PLAZA INC
95 17TH ST SW
NAPLES, FL 34117

COLLIER REALTY CORPORATION +
HASAN KARAGOZ
C/O JAMES KARL & ASSOCIATES
971 N COLLIER BLVD
MARCO ISLAND, FL 34145

INVEST PROP EXCHANGE SERVICES
JAMES R WILHELM
9716 GLEN HERON DR
BONITA SPRINGS, FL 34135

HERRERA JR, DAVID
990 MONROE ST
IMMOKALEE, FL 34142

U S A TRUST SEMINOLE TRIBE OF FLA
DEPT OF INTERIOR BUREAU OF INDIAN
AFFAIRS
WASHINGTON, DC 20510

CYPRESS, MITCHELL
AMY M ADAME
JOSIE BILLIE HWY PMB 237
CLEWISTON, FL 33440

MATEO, JUAN M
PO BOX 1
IMMOKALEE, FL 34143

ARMBRESTER JR, WILLIAM B
KAREN A ARMBRESTER
PO BOX 1005
IMMOKALEE, FL 34143

ARCP FD PORTFOLIO XIV LLC
PO BOX 1017
CHARLOTTE, NC 28201

SPIRES, JAMES W & ANNETTE SPIRES,
VERA ANNETTE
PO BOX 1048
IMMOKALEE, FL 34143

LOZANO, MARTHA
PO BOX 1094
IMMOKALEE, FL 34143

ADAME EST, MARIA R
PO BOX 1097
IMMOKALEE, FL 34143

MASS 5 LLC
PO BOX 110056
NAPLES, FL 34108

SANCHEZ EST, ADELA
PO BOX 1125
IMMOKALEE, FL 34143

PERRYDALE FARMS LLC
PO BOX 1129
IMMOKALEE, FL 34143

WALGREEN CO REAL ESTATE PROPERTY
TAX
PO BOX 1159
DEERFIELD, IL 60015

DOMINGUEZ, FRANCISCO
PO BOX 1169
IMMOKALEE, FL 34143

DOMINGUEZ, OLGA
PO BOX 1169
IMMOKALEE, FL 34142

SUNCOAST SCHOOLS FED CR UNION
PO BOX 11904
TAMPA, FL 33610

FIRST BANK
PO BOX 1237
CLEWISTON, FL 33440

PATINO, ANTONIO
CARRENO, FLORENCIA
PO BOX 1246
IMMOKALEE, FL 34143

DELEON, JOSE MANUEL & SYLVIA
PO BOX 1307
IMMOKALEE, FL 34142

ORTIZ-GARCIA, MARIA
PO BOX 1321
IMMOKALEE, FL 34143

BARNHART, IRENE
SAUCEDA, ERASMO & IRENA B
PO BOX 14
IMMOKALEE, FL 34143

SANCHEZ, SANTANA & TAMMY
PO BOX 1407
IMMOKALEE, FL 34142

ARREGUIN, SALVADOR & TERESA
PO BOX 1424
IMMOKALEE, FL 34143

STRICKLAND, HUGH
PO BOX 143
IMMOKALEE, FL 34143

AVILES, ENRIQUE & PASCUALA
PO BOX 1455
IMMOKALEE, FL 34143

SOTO, IGNACIO
SOTO, IGNACIO G
PO BOX 1473
IMMOKALEE, FL 34143

RAMIREZ, ISABEL
PO BOX 1546
IMMOKALEE, FL 34143

VASQUEZ, ELIZALDE RAMIREZ
PO BOX 1546
IMMOKALEE, FL 34142

CASTRO, OCTAVIANO & MARY M
PO BOX 1547
IMMOKALEE, FL 34143

BOOM, DEMORRIS D
PO BOX 1645
IMMOKALEE, FL 34143

JACINTO & MERCEDES SANCHEZ TRU
PO BOX 165
IMMOKALEE, FL 34143

GARZA, TIMOTHY & MARIA A G
PO BOX 165
IMMOKALEE, FL 34143

GODWIN EST, JUANITA
PO BOX 1667
IMMOKALEE, FL 34143

HAITIAN FIRST ASSEMBLY OF GOD
IMMOKALEE FLORIDA INC
PO BOX 1680
IMMOKALEE, FL 34143

ESTRADA, CARLOS ERIK
PO BOX 1696
IMMOKALEE, FL 34143

ALVAREZ, ISAIAS & EDUWIGES
PO BOX 1702
IMMOKALEE, FL 34143

LE BRUM, ANNUEL & ELIANE
PO BOX 1711
IMMOKALEE, FL 34143

ROSADO, LUIS M OLIVIA ROSADO
PO BOX 1725
IMMOKALEE, FL 34143

REGAN, ISMAELI
PO BOX 1731
IMMOKALEE, FL 34143

GONZALEZ-ESTRADA, JERONIMO ROSA
I PEREZ DE GONZALEZ
PO BOX 1734
IMMOKALEE, FL 34143

AVILES, JUAN & ELEUTERIA
PO BOX 1752
IMMOKALEE, FL 34143

GONZALEZ, RUBEN & SONIA
PO BOX 1755
IMMOKALEE, FL 34143

SEGURA, JOSE F & MARIA F
PO BOX 179
IMMOKALEE, FL 34143

B & B GROCERY STORES INC HANDY
#50/ADJ TENANT
PO BOX 1808
TAMPA, FL 33601

NEBRASKA AVE CORPORTION B&B
CASH GROCERY STORES INC
PO BOX 1808
TAMPA, FL 33601

MUNOZ TR, TERESA K WASHINGTON
TERESA K WASHINGTON MUNOZ TR
UTD 04/17/09
PO BOX 186
IMMOKALEE, FL 34143

MAYS, HAROLD L & DONNA S
PO BOX 186
EVERGLADES CITY, FL 34139

MUNOZ TR, TERESA K WASHINGTON
TERESA K WASHINGTON MUNOZ TR
UTD 04/17/09
PO BOX 186
IMMOKALEE, FL 34143

PAULINO, FELIX GUSMAN
PO BOX 1876
IMMOKALEE, FL 34143

HERNANDEZ, LIVIA GUZMAN
PO BOX 1876
IMMOKALEE, FL 34143

PEREZ, RAFAEL & OLIVIA
PO BOX 190
IMMOKALEE, FL 34143

PEGGY R THOMAS REV TRUST
PO BOX 1945
LEHIGH ACRES, FL 33970

LEE, ALBERT & MARGARET
PO BOX 195
IMMOKALEE, FL 34143

EVERETT D LOUKONEN R D TRUST
PO BOX 1990
IMMOKALEE, FL 34143

HECKMAN JR, KEITH T
PO BOX 201
IMMOKALEE, FL 34143

SONTAY, ESTEBAN IXCOY GUEDELIA
JIMENEZ SANTOS
PO BOX 2019
IMMOKALEE, FL 34143

RESA SR, AARON AARON RESA JR
PO BOX 2022
IMMOKALEE, FL 34143

RESA SR, AARON ELVIRA P ROSA
PO BOX 2022
IMMOKALEE, FL 34143

REZA, ARRON & ELVIRA
PO BOX 2022
IMMOKALEE, FL 34143

MATIAS, ANDRES MENDOZA
PO BOX 204
IMMOKALEE, FL 34143

RAYMOND, ESTIL M & LEANE
PO BOX 2041
IMMOKALEE, FL 34143

HERNANDEZ, ADRIAN J & ERLINDA
PO BOX 2086
IMMOKALEE, FL 34143

CRUZ, JUAN
PO BOX 2087
IMMOKALEE, FL 34143

CRUZ, JUAN
PO BOX 2087
IMMOKALEE, FL 34143

QUINTERO, FELIPE & ROSA
PO BOX 2123
IMMOKALEE, FL 34143

PARKER, MARY JOSEPHINE
PO BOX 2134
ARCADIA, FL 34265

ALMON, SUSAN MAYM JUMP
PO BOX 215
SORRENTO, FL 32776

ALMON, SUSAN MAYM JUMP MARY
JOSEPHINE PARKER
PO BOX 215
SORRENTO, FL 32776

LOPEZ, FRANCISCO ENEDINA LOPEZ
PO BOX 2253
IMMOKALEE, FL 34143

MENDOZA, GRACIANO & SOTERA
PO BOX 2257
IMMOKALEE, FL 34143

PRICE, STEPHEN L & JANET R
PO BOX 2262
IMMOKALEE, FL 34143

CONTRERAS, YOLANDA
PO BOX 2297
IMMOKALEE, FL 34143

HERNANDEZ, JOSE L & YOLANDA
PO BOX 2303
IMMOKALEE, FL 34143

MENDEZ, RODOLFO & CATALINA
PO BOX 2324
IMMOKALEE, FL 34143

ESPINOZA, ROSE
PO BOX 2380
IMMOKALEE, FL 34143

HERNANDEZ, JOSE J & AMADA O
PO BOX 2394
IMMOKALEE, FL 34143

GONZALEZ, JOSE & MARIA
PO BOX 2417
IMMOKALEE, FL 34143

AYER JR, NORMAN R & LINDA K
PO BOX 2439
IMMOKALEE, FL 34143

HERNANDEZ, CARLOS R
PO BOX 2514
IMMOKALEE, FL 34143

TREJO, FEDERICO RUIZ
PO BOX 2581
IMMOKALEE, FL 34143

FLORES, IGNACIO & NORALI REINALDO
& ELVIRA NODAL
PO BOX 2610
IMMOKALEE, FL 34143

REZA, TIMOTEO & GUADALUPE
PO BOX 2648
IMMOKALEE, FL 34143

MORAN VEGA, REYNA
PO BOX 2698
IMMOKALEE, FL 34143

ADVANCE AUTO PARTS INC #9274
ATTN; TAX ACCOUNTING
PO BOX 2710
ROANOKE, VA 24001

HUAPILLA, GENARO
PO BOX 2723
IMMOKALEE, FL 34143

HUAPILLA, GENARO
PO BOX 2723
IMMOKALEE, FL 34143

TREVINO, JESUS & NELLY O
PO BOX 2728
IMMOKALEE, FL 34143

MONTELONGO, LEONOR
PO BOX 2774
IMMOKALEE, FL 34143

CARMONA, GERARDO & EMILIA
PO BOX 2796
IMMOKALEE, FL 34143

SANDOVAL, ALFREDO E
MARTHA PEREZ DE SANDOVAL
PO BOX 280
IMMOKALEE, FL 34143

MARTINEZ, FRANCISCO SAAVEDRA
PO BOX 2845
IMMOKALEE, FL 34143

PEREZ- HERNANDEZ, AMPARO
PO BOX 2909
IMMOKALEE, FL 34143

MARTINEZ, VERONICA
PO BOX 3062
IMMOKALEE, FL 34143

SIX L'S PACKING CO INC
PO BOX 3088
IMMOKALEE, FL 34143

KUZZEN'S INC
PO BOX 3088
IMMOKALEE, FL 34143

MARTINEZ, JOSE
PO BOX 312
IMMOKALEE, FL 34143

BRISTER, JOSEPH J & BARBARA L
PO BOX 3177
IMMOKALEE, FL 34143

ROSBOUGH ENTERPRISES LTD
PO BOX 3206
IMMOKALEE, FL 34143

MIMS WELDING INC
PO BOX 3235
IMMOKALEE, FL 34143

IGLESIA BAUTISTA DEJESUCRISTO INC
PO BOX 3265
IMMOKALEE, FL 34143

HAITH, BRENDA E & HORACE G
PO BOX 329
IMMOKALEE, FL 34143

YZAGUIRRE, ARMANDO
PO BOX 330
IMMOKALEE, FL 34143

CONTRERAS, ANTACIO & GLORIA Z
CONTRERAS ET UX, ANASTACIO
PO BOX 333
IMMOKALEE, FL 34143

PEREZ-FLORES, EBELIO GABRIELLA
GONZALEZ-PEREZ
PO BOX 3413
IMMOKALEE, FL 34143

WORKMAN SERVICE INC
PO BOX 3417
IMMOKALEE, FL 34143

HERNANDEZ, MARIA DEL ROSARIO
SANTIAGO HERNANDEZ
PO BOX 3435
IMMOKALEE, FL 34143

BIG CYPRESS HOUSING CORP
PO BOX 343529
FLORIDA CITY, FL 33034

SOUTH FLORIDA PACKERS LLC
PO BOX 3447
IMMOKALEE, FL 34143

LEE COUNTY ELECTRIC CO-OP
PO BOX 3455
NORTH FORT MYERS, FL 33918

JOHNS, WALLACE G & BRIGITTE S
PO BOX 346
WORTHNGTN SPG, FL 32697

RAMIREZ, ROBERTO P & MAGDA O
PO BOX 3466
IMMOKALEE, FL 34143

CALMO, LAZARO LORENZO
PO BOX 3484
IMMOKALEE, FL 34143

JERONIMO, ISABEL MATIAS
PAULINA MATIAS
PO BOX 3484
IMMOKALEE, FL 34143

LOPEZ, MARTIN M
SOTO MARIA + INEZ SOTO
PO BOX 3503
IMMOKALEE, FL 34143

RAMIREZ, RAFAEL
ARMANDO RAMIREZ
PO BOX 3554
IMMOKALEE, FL 34143

HERNANDEZ, ANGEL R & LORENA
PO BOX 3597
IMMOKALEE, FL 34142

MUNOZ, DANIEL & ROSALINA
PO BOX 3618
IMMOKALEE, FL 34143

GERMAN JR, EDWARD
PO BOX 372
IMMOKALEE, FL 34143

ROMERO, IGNACIO
PO BOX 389
IMMOKALEE, FL 34143

MARTINEZ, CRISTELA
PO BOX 393
IMMOKALEE, FL 34143

YEOMANS, SUSAN J
PO BOX 400
LABELLE, FL 33975

COMMUNITY HEALTH CARE INC
PO BOX 413029
NAPLES, FL 34101

WRIGHT, ALLEN J
PO BOX 43
IMMOKALEE, FL 34143

WHITE, W ANN + BARBARA JEAN VAN
HORN + JOYCE G NEALY
PO BOX 44138
FT WASHINGTON, MD 20749

NEALY, JOYCE G
PO BOX 441382
FT WASHINGTON, MD 20749

LOPEZ, JAIME & MARIA DOLORES
PO BOX 445
IMMOKALEE, FL 34143

GONZALEZ, JUAN VALDEZ + MARIA D
AGUILERA DE ORTIZ +
ROSA VALDEZ GONZALEZ
PO BOX 446
IMMOKALEE, FL 34142

IMMOKALEE A M E CHURCH
PO BOX 477
IMMOKALEE, FL 34143

JACK W JOHNSON JR TRUST
PO BOX 5003
IMMOKALEE, FL 34143

JOHNSON JR, JACK WINBURN
CHARLOTTE ANN JOHNSON
PO BOX 5003
IMMOKALEE, FL 34143

JACK & ANN'S FEED & SUPPLY INC
PO BOX 5003
IMMOKALEE, FL 34143

JACK W JOHNSON SR DECL OF TR
PO BOX 5003
IMMOKALEE, FL 34143

HAMILTON, JOSEPHINE G
HAMILTON, EMORY
PO BOX 501
DONALSONVILLE, GA 39845

MARTINEZ, ELIZABETH
PO BOX 502
IMMOKALEE, FL 34143

CHENEY SR, EARL L & BILLIE J
PO BOX 5021
IMMOKALEE, FL 34143

ANEZ, DANIEL & GLORIA M
PO BOX 5056
IMMOKALEE, FL 34142

4108 AERIE IMMOKALEE, FOE, INC
PO BOX 5063
IMMOKALEE, FL 34143

F & F FARMS INC
PO BOX 5070
IMMOKALEE, FL 34143

PUENTE, PEDRO & AIDA
PO BOX 508
IMMOKALEE, FL 34143

RAMIREZ, FRANCISCO
JAVIER ALIDIA RAMIREZ
PO BOX 5087
IMMOKALEE, FL 34143

MAYS, JETTIE ANN
WHEELER, DUANE S
PO BOX 5093
IMMOKALEE, FL 34143

EVERGLADES FARMS INC
PO BOX 5101
IMMOKALEE, FL 34143

BOONE, WILLIAM S & PATRICIA S
PO BOX 5128
IMMOKALEE, FL 34143

SHIRLEY M BROWN TRUST
PO BOX 5155
IMMOKALEE, FL 34143

HOWELL ROBERTS LLC
PO BOX 5158
IMMOKALEE, FL 34143

SALAZAR, MARIA I
PO BOX 5172
IMMOKALEE, FL 34143

LOPEZ, JOSE & NORMA
PO BOX 5186
IMMOKALEE, FL 34143

LIGHTNER JR, RONALD DAVID
PO BOX 5189
IMMOKALEE, FL 34143

WATSON, DANA W
PO BOX 52
IMMOKALEE, FL 34143

WATSON, DANA
PO BOX 52
IMMOKALEE, FL 34143

DBNCH CIRCLE LLC CIRCLE K STORES
INC - PROPERTY TAX DC17
PO BOX 52085
PHOENIX, AZ 85072

WHEELER, DUANE S & FLEETA K
PO BOX 5222
IMMOKALEE, FL 34143

WHEELER, DUANE & FLEETA
PO BOX 5222
IMMOKALEE, FL 34143

SANTIAGO JUAREZ, JUAN
JUANA LUNA GARCIA
PO BOX 5230
IMMOKALEE, FL 34142

DELUCIO, MARIA CRUZ RODOLFO
LUCIO
PO BOX 5242
IMMOKALEE, FL 34143

GARCIA SR, MARIO A
PO BOX 5252
IMMOKALEE, FL 34143

ANZUALDA, ASUSENA MARIA
PO BOX 5321
IMMOKALEE, FL 34143

MILLER, LETHA W
PO BOX 5365
IMMOKALEE, FL 34143

GUTIERREZ, MARIA
PO BOX 54
IMMOKALEE, FL 34143

COLDING, WADE MCKINLEY
PO BOX 542
FELDA, FL 33930

BROWNING BROS PALMS INC
PO BOX 543
LEHIGH ACRES, FL 33970

AYALA, MARLENE
PO BOX 546
IMMOKALEE, FL 34143

GLIDDEN, RUTH M
PO BOX 547
IMMOKALEE, FL 34143

REDMOND, MARIE M
PO BOX 571
IMMOKALEE, FL 34143

FRIENDSHIP BAPTIST CHURCH
PO BOX 580
IMMOKALEE, FL 34143

DALUSMA, AUGUSTIN & MARIE O
PO BOX 598
IMMOKALEE, FL 34143

COALITION OF IMMOKALEE WORKERS
INC, THE
PO BOX 603
IMMOKALEE, FL 34143

ROBERTS TR, LOIS L UTD 10/23/87
PO BOX 60497
FORT MYERS, FL 33906

CREWS, Z FLOYD MURRAY CANOVA
PO BOX 610
IMMOKALEE, FL 34143

SOUTHWEST FLA SERV & SUPPLY
PO BOX 610
IMMOKALEE, FL 34143

CREWS, Z FLOYD MURRAY C CANOVA
PO BOX 610
IMMOKALEE, FL 34143

S W FLORIDA SERVICE & SUPPLY
PO BOX 610
IMMOKALEE, FL 34143

CREWS, Z FLOYD + MURRAY C CANOVA
+ GERALD RAINWATERS +
CECIL R HOWELL JR
PO BOX 610
IMMOKALEE, FL 34143

CREWS ET AL, Z FLOYD
PO BOX 610
IMMOKALEE, FL 34143

ORVILLE RAINWATERS REV TRUST
MARGARET C RAINWATERS FMLY TR
PO BOX 628
IMMOKALEE, FL 34143

RAINWATERS ET AL TR, ORVILLE
ORVILLE L RAINWATERS REV TRUST
UTD 08/18/95
PO BOX 628
IMMOKALEE, FL 34143

ANZUALDA, ROBERTO G
PO BOX 632
IMMOKALEE, FL 34143

LANCASTER JR, CHARLES T
FRIEDA Y LANCASTER
PO BOX 636
IMMOKALEE, FL 34143

WINFIELD SOLUTIONS LLC
LAND O' LAKES INC. - MS 4015
PO BOX 64101
SAINT PAUL, MN 55164

HERRERA, ANDREW
ANDRES LORENA HERRERA
PO BOX 65
IMMOKALEE, FL 34143

MCDONALD'S CORP
PO BOX 66207
CHICAGO, IL 60666

GLIDDEN, DOUGLAS M & B FAYE
PO BOX 687
IMMOKALEE, FL 34143

BARNHART-SANCHEZ, BELINDA
PO BOX 693
IMMOKALEE, FL 34142

MERIT PETROLEUM CO
PO BOX 698
SARASOTA, FL 34230

PIONEER PLAZA INC
PO BOX 698
SARASOTA, FL 34230

GARZA, TIMOTHY
REBECCA SUE ADAME
PO BOX 699
IMMOKALEE, FL 34143

GALAN, ERNESTO & ERNESTINA
PO BOX 722
IMMOKALEE, FL 34143

E & B MILLER FAMILY FLORIDA LIMITED
PARTNERSHIP
PO BOX 728
LABELLE, FL 33975

SMITH, W H & CUTE
PO BOX 728
IMMOKALEE, FL 34143

IMMOKALEE CH OF GOD, TR
PO BOX 729
IMMOKALEE, FL 34143

CHURCH OF GOD TR
PO BOX 729
IMMOKALEE, FL 34143

LOPEZ, ALICIA Z
PO BOX 731
IMMOKALEE, FL 34143

GONZALEZ, ALEX
PO BOX 734
IMMOKALEE, FL 34143

SERENOA LLC
PO BOX 760
FELDA, FL 33930

CAPRI INTERNATIONAL INC
PO BOX 771027
NAPLES, FL 34107

MR 99 CENTS INC
PO BOX 771027
NAPLES, FL 34107

NODAL, ELVIRA
PO BOX 776
LEHIGH ACRES, FL 33970

MIGUEL, MARTA
PO BOX 78
IMMOKALEE, FL 34143

UNITED TEL CO OF FLA EMBARQ CORP -
ATTN: PROPERTY TAX
PO BOX 7909
OVERLAND PARK, KS 66207

AMERIGAS PROPANE L P #5330
PO BOX 798
VALLEY FORGE, PA 19482

CORREA, GENEVA G
PO BOX 802
IMMOKALEE, FL 34143

HERRERA, ARMANDO
PO BOX 805
IMMOKALEE, FL 34143

HERRERA, ANITA
PO BOX 805
IMMOKALEE, FL 34143

TAYLOR, ANGELA E
PO BOX 81
IMMOKALEE, FL 34143

MALDONADO, MARTIN & JUANA
PO BOX 816
IMMOKALEE, FL 34143

VARGAS, MARIA E G
PO BOX 849
IMMOKALEE, FL 34143

HAMMAN EST, CAROL
PO BOX 902
IMMOKALEE, FL 34143

IMMOKALEE PRODUCE CENTER LLC
PO BOX 910
IMMOKALEE, FL 34143

EVERGLADES FARM EQUIPMENT CO
INC
PO BOX 910
BELLE GLADE, FL 33430

IMMOKALEE PRODUCE CENTER LLC
PO BOX 910
IMMOKALEE, FL 34143

SUNNILAND FMLY LTD PARTNERSHIP
PO BOX 930
IMMOKALEE, FL 34143

JB RANCH I LLC
PO BOX 930
IMMOKALEE, FL 34143

PRIDDY, RUSSELL A
ALIESE PRICE PRIDDY
PO BOX 930
IMMOKALEE, FL 34143

MILLER, GERALDINE
PO BOX 941
IMMOKALEE, FL 34143

GONZALEZ, CYNHYIA
PO BOX 961
IMMOKALEE, FL 34143

GONZALEZ, DANIEL & SANDRA
PO BOX 961
IMMOKALEE, FL 34142

LOZANO, LOURA
PO BOX 961
IMMOKALEE, FL 34143

LOZANO, ARTEMIO & LOURA
PO BOX 961
IMMOKALEE, FL 34143

C & C PROPERTIES OF IMMOKALEE INC
PO BOX 970
IMMOKALEE, FL 34143

BLOCKER, CURTIS D & BRENDA
PO BOX 970
IMMOKALEE, FL 34143

BLOCKER & LEWIS ENTER INC
PO BOX 970
IMMOKALEE, FL 34143

E & M HARVESTING INC
PO BOX 984
IMMOKALEE, FL 34143

MARILYN QUEEN REVOCABLE TRUST
PO BOX 990
IMMOKALEE, FL 34143

QUEEN TR, MARILYN R UTD 12/1/88
PO BOX 990
IMMOKALEE, FL 34143

JACK QUEEN CONSTRUCTION INC
PO BOX 990
IMMOKALEE, FL 34143

LAMBERT, YURI JULIO HERNANDEZ
PO BOX 990337
NAPLES, FL 34116

HANSHAW, BRUCE T
PO BOX 996
LABELLE, FL 33975

MR. BILLY CYPRESS MICCOSUKEE TRIBE
OF INDIANS OF FLORIDA –
TAMIAMI SECTION
PO BOX 440021
MIAMI, FL 33144

MR. FRED DAYHOFF MICCOSUKEE
TRIBE OF INDIANS OF FLORIDA -
TAMIAMI SECTION - HC 61
SR BOX 68 OLD LOOP ROAD
OCHOPEE, FL 34141

MR. MARCELLUS W. OSCEOLA
SEMINOLE TRIBE OF FLORIDA
6300 STIRLING RD
HOLLYWOOD, FL 33024

PAUL N. BACKHOUSE, PH.D. TRIBAL
HISTORIC PRESERVATION OFFICE
30290 JOSIE BILLIE HWY - PMB 1004
CLEWISTON, FL 33440

ANNE H. MULLINS, MCRP TRIBAL
HISTORIC PRESERVATION OFFICE
30290 JOSIE BILLIE HWY - PMB 1004
CLEWISTON, FL 33440

MR. JAMES FLOYD MUSCOGEE (CREEK)
NATION - OFFICE OF ADMINISTRATION
PO BOX 580
OKMULGEE, OK 74447

MUSCOGEE (CREEK) NATION CULTURAL
PRESERVATION HISTORIC AND CULTURAL
PRESERVATION DEPARTMENT
PO BOX 580
OKMULGEE, OK 74447

STEPHANIE A. BRYAN POARCH BAND
OF CREEK INDIANS
5811 JACK SPRINGS ROAD
ATMORE, AL 36502

MR. ROBERT THROWER POARCH BAND
OF CREEK INDIANS
5811 JACK SPRINGS ROAD
ATMORE, AL 36502

MR. LEONARD M. HARJO SEMINOLE
NATION OF OKLAHOMA
PO BOX 1498
WEWOKA, OK 74884

MR. THEODORE ISHAM SEMINOLE
NATION OF OKLAHOMA
PO BOX 1498
WEWOKA, OK 74884

CELLA MOLNAR & ASSOCIATES, INC.
1631 HENDRY STREET
FORT MYERS, FL 33901