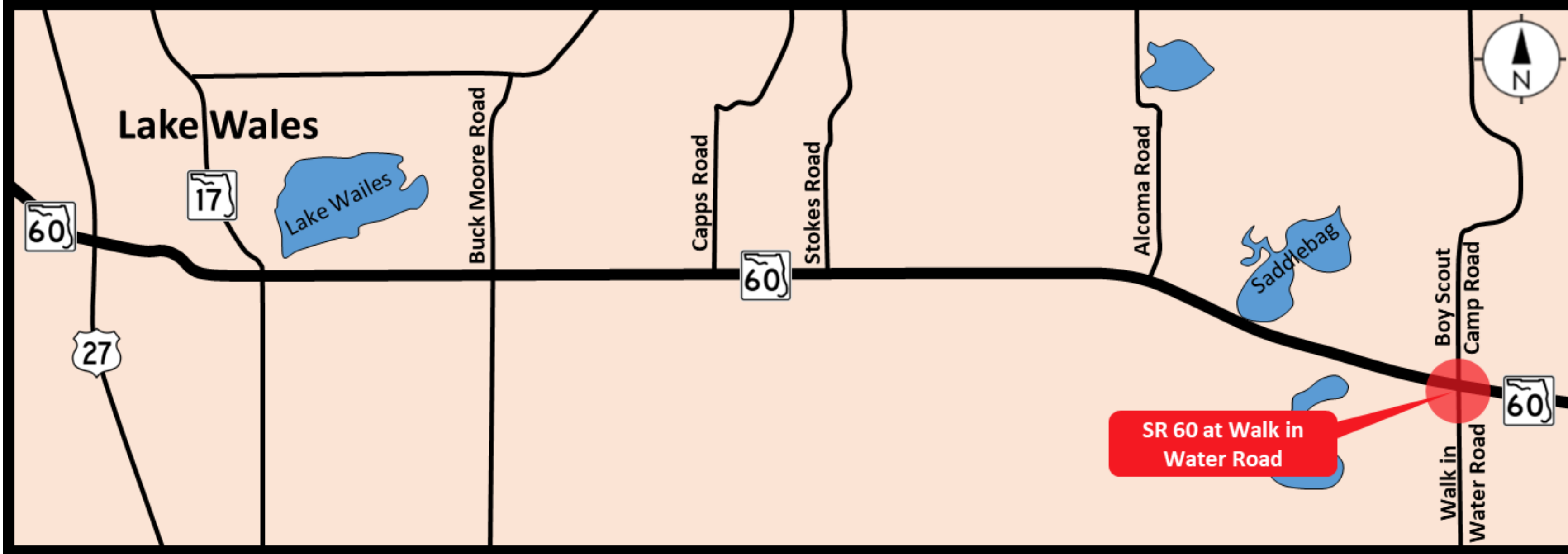


EXISTING CONDITION





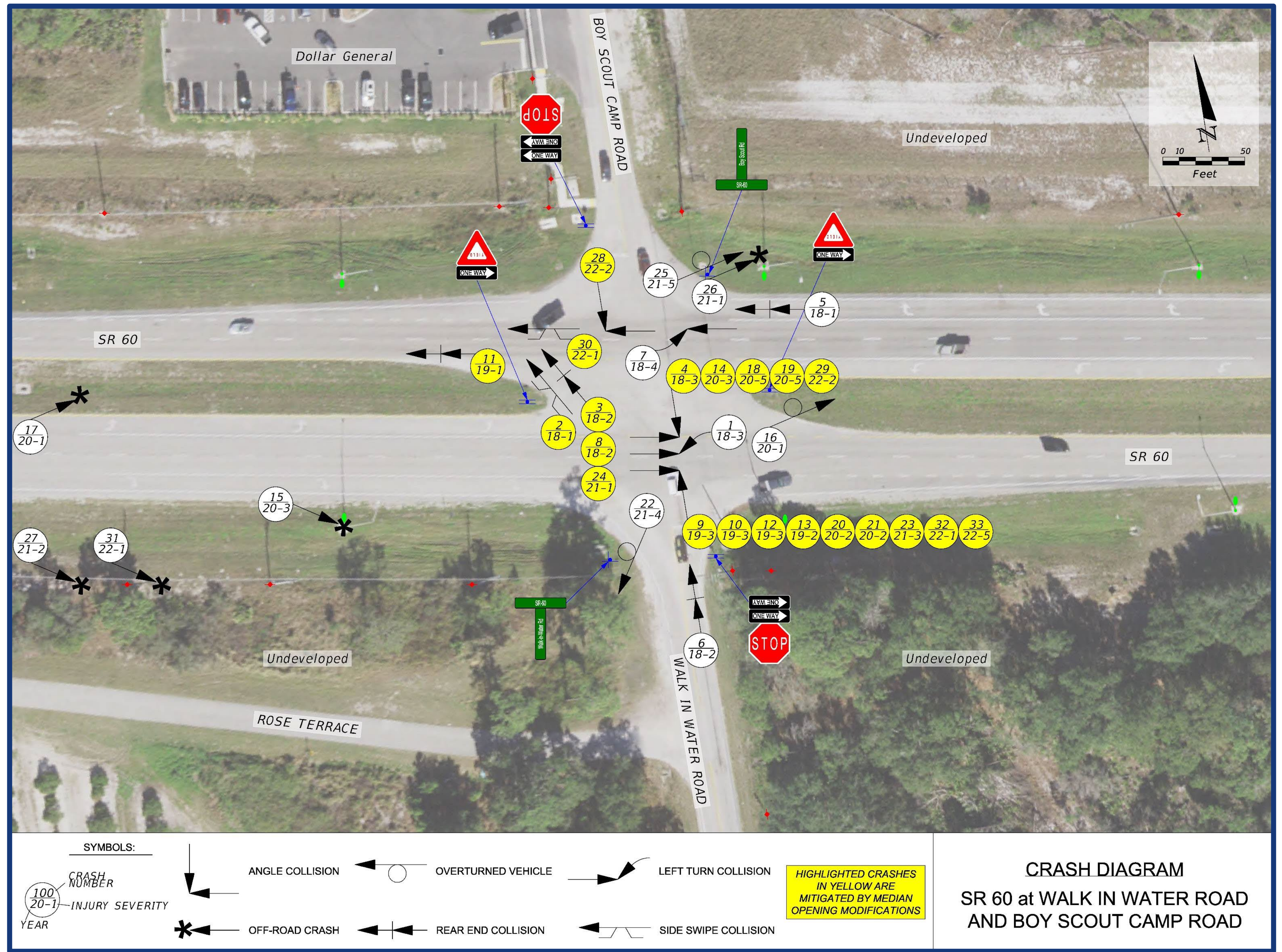
COLLISION HISTORY

Median Opening Type		Reported Crash Totals 2018 - Present					
Existing	Proposed	Fatal and Incapacitating Crashes	Total Crashes	Correctible Crashes			
				Left Turn/Angle Crashes from Side Street	Rear End	All Other	Total
Full	Directional	6	33	17	4	2	23

Summary

FLORIDA DEPARTMENT OF TRANSPORTATION													
COLLISION SUMMARY													
Section:		16130-000			State Road: 60			County: Polk					
Intersecting route:		Walk In Water Road / Boy Scout Camp Road			Milepost: 8.260			Data by: CAR					
Study period:		January 1, 2018 to December 31, 2022						Date: 2/16/2023					
NO.	DATE	DAY	TIME	FATAL	INJURY	INJURY SEVERITY	PROPERTY DAMAGE	HARMFUL EVENT	FORM LENGTH	DUI	DAY / NIGHT	WET / DRY	CONTRIBUTING CAUSE
1	02/16/18	Friday	18:23	0	2	3-Non-Incapacitating Injury	\$15,000	Left-Turn	Long	No	Day	Dry	Careless Driving
2	02/22/18	Thursday	13:34	0	0	1-No Injury	\$2,500	Side-Swipe	Long	No	Day	Dry	Careless Driving
3	03/06/18	Tuesday	7:05	0	1	2-Possible Injury	\$7,500	Rear-End	Long	No	Day	Dry	Careless Driving
4	03/18/18	Sunday	21:24	0	2	3-Non-Incapacitating Injury	\$10,000	Angle	Long	No	Night	Dry	FTYROW
5	07/08/18	Sunday	0:55	0	0	1-No Injury	\$3,000	Rear-End	Long	No	Night	Dry	Careless Driving
6	07/16/18	Monday	16:00	0	1	2-Possible Injury	\$2,500	Rear-End	Long	Yes	Day	Wet	Careless Driving
7	10/12/18	Friday	16:00	0	2	4-Incapacitating Injury	\$7,000	Left-Turn	Long	No	Day	Dry	FTYROW
8	10/27/18	Saturday	10:15	0	1	2-Possible Injury	\$3,000	Rear-End	Long	No	Day	Dry	Careless Driving
9	01/24/19	Thursday	18:02	0	3	3-Non-Incapacitating Injury	\$15,000	Angle	Long	No	Day	Dry	Careless Driving
10	01/25/19	Friday	18:43	0	3	3-Non-Incapacitating Injury	\$5,000	Angle	Long	No	Day	Dry	Careless Driving
11	03/26/19	Tuesday	13:01	0	0	1-No Injury	\$1,000	Rear-End	Long	No	Day	Dry	FTYROW
12	05/16/19	Thursday	16:13	0	1	3-Non-Incapacitating Injury	\$2,000	Angle	Long	No	Day	Dry	FTYROW
13	10/29/19	Tuesday	7:10	0	1	2-Possible Injury	\$20,000	Angle	Long	No	Day	Dry	FTYROW
14	03/07/20	Saturday	12:35	0	1	3-Non-Incapacitating Injury	\$18,000	Angle	Long	No	Day	Dry	FTYROW
15	03/09/20	Monday	19:56	0	1	3-Non-Incapacitating Injury	\$4,200	Off-Road	Long	No	Night	Dry	Medical Condition
16	06/23/20	Tuesday	17:29	0	0	1-No Injury	\$1,500	Rollover	Long	No	Day	Wet	Hydroplane
17	08/06/20	Thursday	19:37	0	0	1-No Injury	\$1,500	Off-Road	Long	No	Night	Wet	Hydroplane
18	09/18/20	Friday	19:10	1	1	5-Fatality	\$22,500	Angle	Long	No	Night	Dry	FTYROW
19	09/30/20	Wednesday	18:08	1	2	5-Fatality	\$35,000	Angle	Long	No	Day	Dry	FTYROW
20	12/19/20	Saturday	6:30	0	2	2-Possible Injury	\$4,500	Angle	Long	No	Night	Dry	FTYROW
21	12/24/20	Thursday	14:20	0	2	2-Possible Injury	\$10,000	Angle	Long	No	Day	Dry	FTYROW
22	01/01/21	Friday	7:26	0	2	4-Incapacitating Injury	\$5,000	Rollover	Long	No	Day	Dry	Evasive Maneuver
23	01/28/21	Thursday	18:01	0	1	3-Non-Incapacitating Injury	\$4,000	Angle	Long	No	Day	Dry	FTYROW
24	02/22/21	Monday	14:25	0	0	1-No Injury	\$2,000	Rear-End	Long	No	Day	Dry	Careless Driving
25	03/25/21	Thursday	11:15	1	1	5-Fatality	\$21,000	Rollover	Long	No	Day	Dry	Careless Driving
26	07/07/21	Wednesday	5:45	0	0	1-No Injury	\$400	Off-Road	Long	No	Night	Wet	Hydroplane
27	11/05/21	Friday	11:31	0	1	2-Possible Injury	\$5,000	Off-Road	Short	No	Day	Wet	Hydroplane
28	01/02/22	Sunday	17:49	0	2	2-Possible Injury	\$11,000	Angle	Long	No	Day	Dry	Careless Driving
29	02/01/22	Tuesday	9:30	0	2	2-Possible Injury	\$220,000	Angle	Long	No	Day	Dry	FTYROW
30	03/14/22	Monday	12:20	0	0	1-No Injury	\$200	Side-Swipe	Long	No	Day	Dry	FTYROW
31	08/09/22	Tuesday	11:40	0	0	1-No Injury	\$12,800	Off-Road	Short	No	Day	Wet	Hydroplane
32	10/16/22	Sunday	18:50	0	0	1-No Injury	\$10,000	Angle	Long	No	Day	Dry	FTYROW
33	12/12/22	Monday	13:21	1	2	5-Fatality	\$30,000	Angle	Long	No	Day	Dry	FTYROW
TOTAL				4	37		\$512,300						
TOTAL NO.	Injury Severity			Angle	Left-Turn	Rear-End	Side-Swipe	Off-Road	Rollover				
	Property Damage Only	Injury	Fatality										
33	10	19	4	15	2	6	2	5	3	0	0	0	0
Percent	30%	58%	12%	45%	6%	18%	6%	15%	9%	0%	0%	0%	0%
CONTRIB. CAUSE	Time of Day		Pavement Cond.		FTYROW	Careless Driving	Hydroplane	Evasive Maneuver	Medical Condition				
	Day	Night	Dry	Wet									
Total	26	7	27	6	15	11	5	1	1	0	0	0	0
Percent	79%	21%	82%	18%	45%	33%	15%	3%	3%	0%	0%	0%	0%

Diagram



CRASH DIAGRAM
SR 60 at WALK IN WATER ROAD AND BOY SCOUT CAMP ROAD