

LEGEND

- BASE RESTORATION LIMITS (WITH 2-FT PROFILE RAISE)
- LEE COUNTY- IMPROVEMENTS (INCLUDES BIKE WAY WIDENING)
- STRUCTURES RESILIENCY- BURIED SHEET PILE WALL
- STRUCTURES RESILIENCY- RIP RAP LARGE BOULDERS
- STRUCTURES RESILIENCY- GABION BASKETS
- POTENTIAL AREAS FOR GREEN INFRASTRUCTURE (MANGROVES)
- PRE MHW (MEAN HIGH WATER)
- POST MHW (MEAN HIGH WATER)

AERIAL FLIGHT DATE 2020



STRUCTURES RESILIENCY- RIP RAP LARGE BOULDERS

**SANIBEL CAUSEWAY
(ISLAND B)**

POST MHW = +1.35

LEE COUNTY - IMPROVEMENTS
(INCLUDES BIKE WAY WIDENING)

PRE MHW = +0.13

STRUCTURES RESILIENCY- BURIED
SHEET PILE WALL

BASE RESTORATION LIMITS
WITH 2-FT PROFILE RAISE

STRUCTURES
RESILIENCY -
GABION BASKET

POTENTIAL AREAS FOR
GREEN
INFRASTRUCTURE
(MANGROVES)

POTENTIAL AREAS FOR GREEN
INFRASTRUCTURE (MANGROVES)

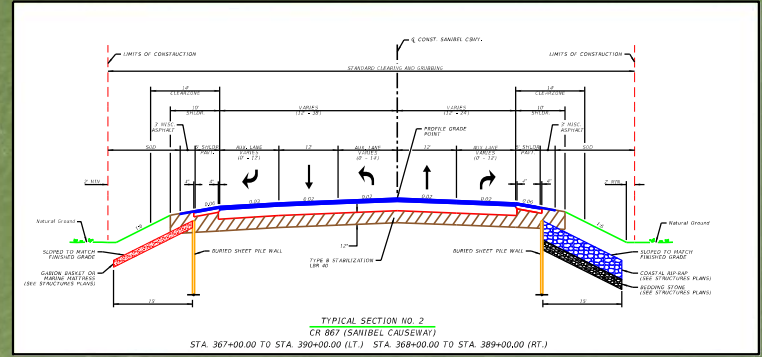
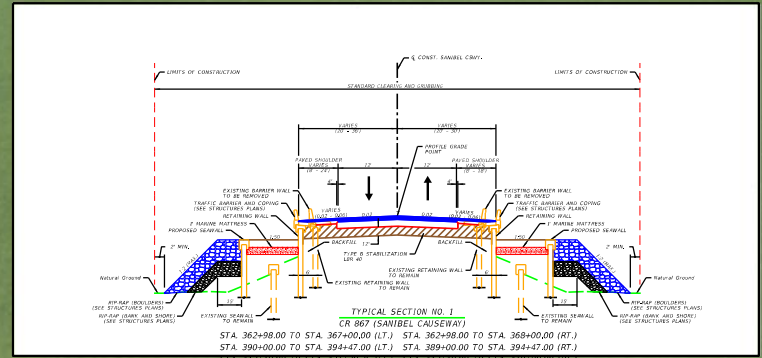
STRUCTURES RESILIENCY - GABION BASKET

**BEGIN
FPID: 451936-2-32-90
SANIBEL ISLAND ACCESS
PERMANENT REPAIRS**

POTENTIAL AREAS FOR GREEN
INFRASTRUCTURE (MANGROVES)

STRUCTURES RESILIENCY- BURIED SHEET PILE WALL

STRUCTURES RESILIENCY-
RIP RAP LARGE BOULDERS



HNTB CORPORATION ONE TAMPA CITY CENTER 201 NORTH FRANKLIN STREET, SUITE 1200 TAMPA, FL 33602	STATE OF FLORIDA DEPARTMENT OF TRANSPORTATION			HURRICANE IAN -SANIBEL ISLAND RESILIENCY MEASURES	SHEET NO.
	ROAD NO.	COUNTY	FINANCIAL PROJECT ID		1
	XX XX	LEE	451936-2-XX-XX		