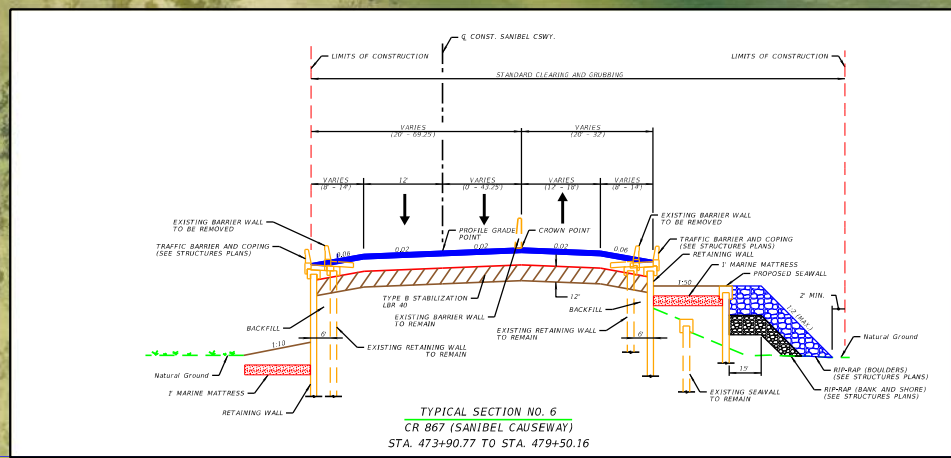
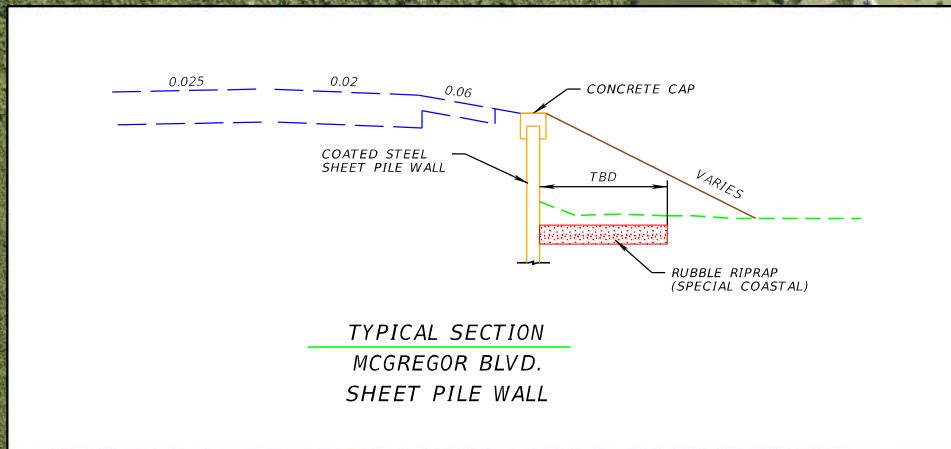


**LEGEND**

- BASE RESTORATION LIMITS (WITH 2-FT PROFILE RAISE)
- LEE COUNTY- IMPROVEMENTS (INCLUDES BIKE WAY WIDENING)
- STRUCTURES RESILIENCY- BURIED SHEET PILE WALL
- STRUCTURES RESILIENCY- RIP RAP LARGE BOULDERS
- STRUCTURES RESILIENCY- GABION BASKETS
- POTENTIAL AREAS FOR GREEN INFRASTRUCTURE (MANGROVES)
- PRE MHW (MEAN HIGH WATER)
- POST MHW (MEAN HIGH WATER)

AERIAL FLIGHT DATE 2020



STATE OF FLORIDA DEPARTMENT OF TRANSPORTATION			<b>HURRICANE IAN -SANIBEL ISLAND RESILIENCY MEASURES</b>	SHEET NO.
ROAD NO. XX XX	COUNTY LEE	FINANCIAL PROJECT ID 451936-2-XX-XX		3
HNTB CORPORATION ONE TAMPA CITY CENTER 201 NORTH FRANKLIN STREET, SUITE 1200 TAMPA, FL 33602			T:\84601 FDOT D1 Hurricane Ian Owners Rep\CADD\ROLL PLOT_03_11x17.dgn	