

# SR 739 (Metro Parkway) at Daniels Parkway Intersection PD&E Re-evaluation in Lee County



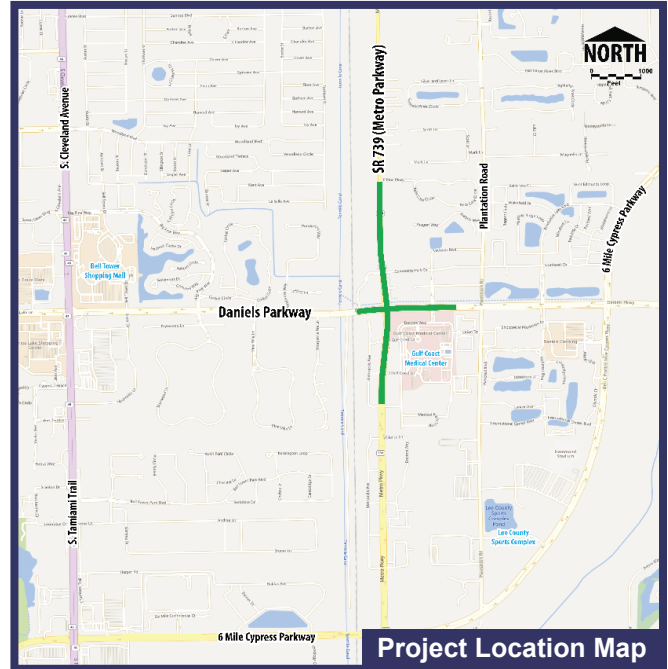
Financial Project Number: 431334-2

## PUBLIC HEARING - July 27, 2023 FDOT District One Southwest Area Office

Welcome to the public hearing for the SR 739 (Metro Parkway) at Daniels Parkway Intersection Project Development and Environment (PD&E) Re-evaluation.

The purpose of this hearing is to provide interested people the opportunity to express their views about the proposed improvements at the intersection of SR 739 (Metro Parkway) and Daniels Parkway. Maps, display boards, and other project information are on display here this evening. The project team is available to discuss the re-evaluation and answer questions.

**Written statements or exhibits submitted at the hearing, emailed, or postmarked by August 10, 2023, will become part of the official hearing transcript.**



### Hearing Schedule & What to Expect

5:00 p.m. Open House | 6:00 p.m. Formal Presentation | 10 minute Intermission then Testimony

#### First Floor

- Sign-in
- Receive project handout
- Watch CFI video
- Comment table

#### Second Floor (via elevator or stairs)

- Watch the project video (looping until 6pm)
- Project displays & documents available for viewing
- Project team available for questions and answers
- Interactive CFI display
- Comment table
- Formal presentation & public testimony (6pm)

### INTRODUCTION

The Florida Department of Transportation (FDOT) District One, previously conducted a PD&E Study to evaluate and document the benefits, costs, and impacts of modifying the intersection configuration at SR 739 (Metro Parkway) and Daniels Parkway in Lee County to address capacity needs based on projected travel demand generated by future population and economic growth. The PD&E Study (FPID 195650-1-21-01) was approved by the Office of Environmental Management as a Type 2 Categorical Exclusion (CE) on February 11, 1999. Since then, the design has been optimized resulting in changes to proposed right-of-way impacts. The public hearing is being held to present information about the changes in design which includes the re-evaluation of the engineering and environmental analysis completed to date and to provide the opportunity for the public to offer feedback for the official hearing record.

## NEED FOR IMPROVEMENT

The original PD&E study was developed as part of the Lee County 2020 Financially Feasible Plan to provide improvements that would increase capacity at the intersection as the projected increase in traffic resulted in an unacceptable level of service by design year 2020. The original PD&E improvements were not funded. A significant period then passed which warranted a revised review of the traffic volumes in 2013.

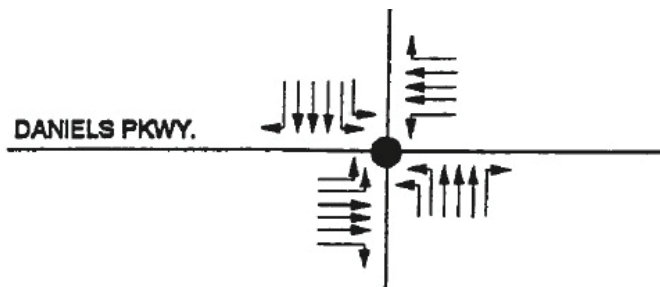
An Intersection Analysis Report was finalized in 2018 that evaluated projected traffic volumes and various alternative designs to accommodate growth. FDOT considered five different concepts to modify the SR 739 (Metro Parkway) and Daniels Parkway intersection in consideration of six laning SR 739 (Metro Parkway) to increase capacity and improve safety. The final decision to proceed with the design of a Continuous Flow Intersection or CFI was coordinated with FDOT, the City of Fort Myers and Lee County.

FDOT is evaluating the segments of SR 739 (Metro Parkway) immediately north of this project in separate PD&E re-evaluations. The first project includes the widening of SR 739 (Metro Parkway) from north of Daniels Parkway to south of Colonial Boulevard in Lee County (FPID: 431334-3) and the second project is the Continuous Flow Intersection (CFI) proposed at SR 739 (Metro Parkway) and Colonial Boulevard in Lee County (FPID: 431334-4).



## 1999 PD&E CONCEPT

The PD&E concept proposed to add one through lane northbound and southbound on SR 739 (Metro Parkway) and dual left turn lanes at the north, south and eastbound approaches to accommodate future widening that was needed to meet the social and economic demand of the area. The dual left turn lanes have since been added under another improvement project.



## FUNDING SCHEDULE\*

Project Phase	Fiscal Year
PD&E Re-evaluation & Initial Design	Current Year
Final Design	2024-2025
Right-of-Way Acquisition	2025
Construction	2026

*\*Preliminary, subject to change*

## EVALUATION MATRIX

Evaluation Criteria	1999 PD&E Recommended Concept	Proposed Design
Purpose & Need – Traffic volumes have increased since 1999		
Improves Transportation Network Connectivity?	✓	✓
Optimizes Operational Conditions?	✗	✓
Optimizes Safety Conditions?	✗	✓
Potential Right-of-Way Impacts		
Relocations (Business/Residential)	0/0	2/0
Number of Parcels Impacted	4	24
Right-of-Way Required (acres)	0.8	3.3
Potential Environmental Effects		
Archaeological & Historic Sites	0	0
Section 4(f) Resources	0	0
Contamination Sites (medium/high)	0/0	2/0
Wetlands (acres)	0	0
Surface Waters (acres)	0	0.6
Floodplains (acre-feet)	0	1.4
Threatened & Endangered Species	Low	Low
Estimated Costs (in millions)		
Right-of-Way Acquisition	\$1.5 M*	\$23 M
Design	\$0.7 M*	\$3 M
Construction	\$21 M*	\$27 M
Construction Engineering & Inspection	\$3.4 M*	\$3.7 M
Preliminary Estimate of Total Project Cost	\$26.6 M*	\$56.7 M

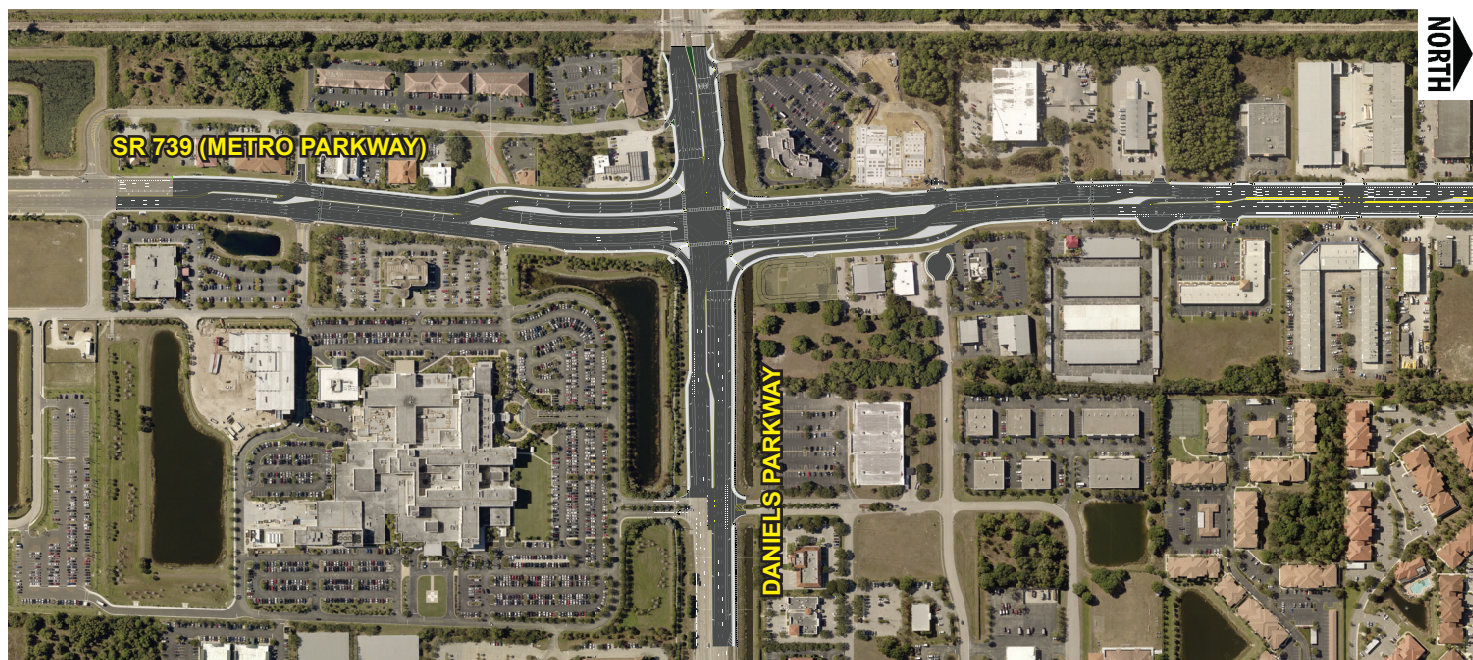
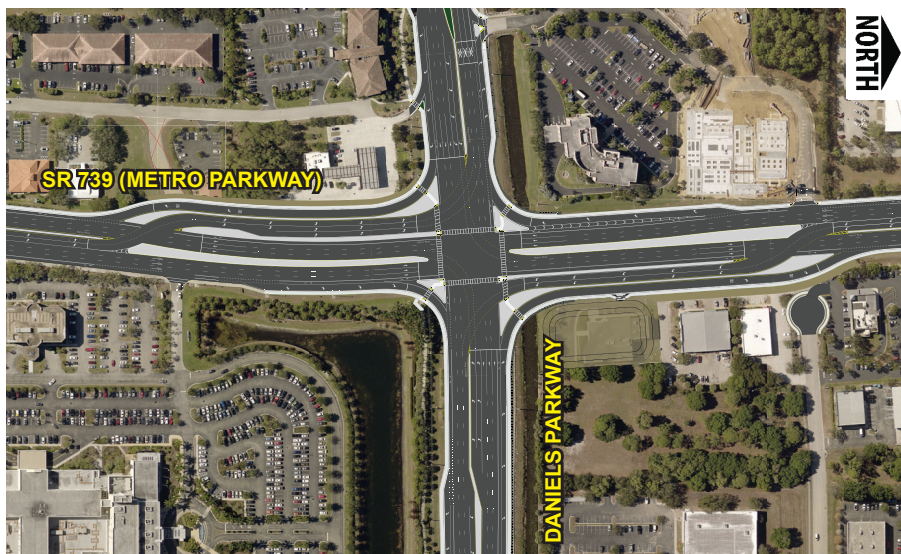
\* - Costs calculated to present day value

*Proposed design cost estimates are preliminary and subject to change.*

## PROPOSED DESIGN

The FDOT proposes to modify the existing at-grade intersection at SR 739 (Metro Parkway) and Daniels Parkway into a Continuous Flow Intersection or CFI. North of Daniels Parkway the current design will add one 11-foot through lane in each direction and an 11-foot northbound through lane will be added south of Daniels Parkway. The project will also add an additional 11-foot northbound left turn lane onto Daniels Parkway for a total of three northbound turn lanes. The proposed CFI places the left turn lanes on SR 739 (Metro Parkway) several hundred feet in advance of the Daniels Parkway intersection which separates the conflicting through movements and left turning movements at the intersection. This provides more green time for the through travel lanes which improves intersection capacity and reduces delay times. It also increases safety by eliminating the left turning conflicts for SR 739 (Metro Parkway). The left turning movements will have their own signal phase.

Additional improvements will be required in advance of the intersection on all approaches in order to accommodate the changes needed for the new intersection configuration and to tie into the existing roadway outside the project limits.



## RIGHT-OF-WAY

Maps on display this evening illustrate right-of-way, or property FDOT needs to acquire to build the proposed intersection modification. To address these effects, FDOT carries out a right-of-way and relocation assistance program in accordance with Section 339.09, Florida Statutes, and the Uniform Relocation Assistance and Real Property Act of 1970. Representatives from FDOT are here tonight to discuss the right-of-way acquisition process with you. Please contact the FDOT District One Right-of-Way Office by telephone at (863) 519-2401 during business hours if you have additional questions about right-of-way.

## PROJECT SCHEDULE\*

A summary of the comments received and their responses will be posted on the project webpage approximately 30 days following the close of the comment period. The team will then finalize engineering and environmental evaluations and project documentation. FDOT District One will make its final recommendation and submit the completed project documents to the Office of Environmental Management for acceptance. Construction is funded for fiscal year 2026.

Project Phase	2018	2019	2020	2021	2022	2023	2024	2025	2026
PD&E Re-evaluation & Initial Design									
Public Hearing									
Final Design									
Right-of-Way Mapping & Acquisition									
Begin Construction									

\*Preliminary, subject to change

## COMMENTS

You may share your comments about the project in several ways:

### At In-Person Venue:

Provide written comments on the comment form or during the public testimony.

### Email Comments To:

Christopher Speese  
FDOT Project Manager  
[Christopher.Speese@dot.state.fl.us](mailto:Christopher.Speese@dot.state.fl.us)

### By Mail To:

Christopher Speese  
FDOT District One  
Southwest Area Office  
10041 Daniels Parkway  
Fort Myers, FL 33913

### Visit The Project Webpage:

[www.swflroads.com/project/431334-2](http://www.swflroads.com/project/431334-2)  
or scan QR code.



All comments must be postmarked by August 10, 2023 to be included as part of the public hearing record. All comments carry equal weight.

A summary of the hearing comments and responses will be available on the webpage approximately 30 days following the close of the comment period.

*Public participation is solicited without regard to race, color, national origin, age, sex, religion, disability or family status. Persons wishing to express their concerns about Title VI may do so by contacting Cynthia Sykes, District One Title VI Coordinator, at (863) 519-2287, or via email at [Cynthia.Sykes@dot.state.fl.us](mailto:Cynthia.Sykes@dot.state.fl.us).*

*In accordance with Rule 14-97 of the Florida Administrative Code, the proposed improvements will include driveway and side street closures to control the movements, or access, of turning traffic. These changes are presented in compliance with Section 335.199 Florida Statutes (Transportation projects modifying access to adjacent property).*

*The environmental review, consultation, and other actions required by applicable federal environmental laws for this project are being, or have been, carried out by FDOT pursuant to 23 U.S.C. §327 and a Memorandum of Understanding dated May 26, 2022 and executed by the Federal Highway Administration and FDOT.*