

# FDOT U.S. 41 (S.R. 45) over Caloosahatchee River Bridge Pedestrian Improvements - Fact Sheet

## Alternative Route - SMART Work Zone







FROM FIRST STREET TO NORTH KEY DRIVE | LEE COUNTY, FLORIDA  
 FPID: 449015-1-52-01 | CONTRACT E1V60

### WHAT TO EXPECT

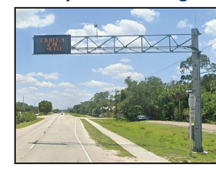
Motorists are able to take an alternate route throughout construction using the Edison Bridge. There are Portable Changeable Message Signs (PCMS) strategically placed and existing Arterial Dynamic Message Signs (ADMS) that will provide live travel times to motorists planning to use the Caloosahatchee Bridge for their commute. Motorists can use this information to make an informed decision on which route they will take.

FDOT is coordinating with Lee County and the City of Fort Myers Traffic Operations to provide optimal signal timing to ease traffic impacts.

#### LEGEND

-  US 41
-  US 41 Alternate Route
-  Guideways to Alternate Route
-  Project Limits
-  Portable Changeable Message Signs (PCMS)
-  Existing Arterial Dynamic Message Sign (ADMS)

Example ADMS Sign



Example PCMS Sign



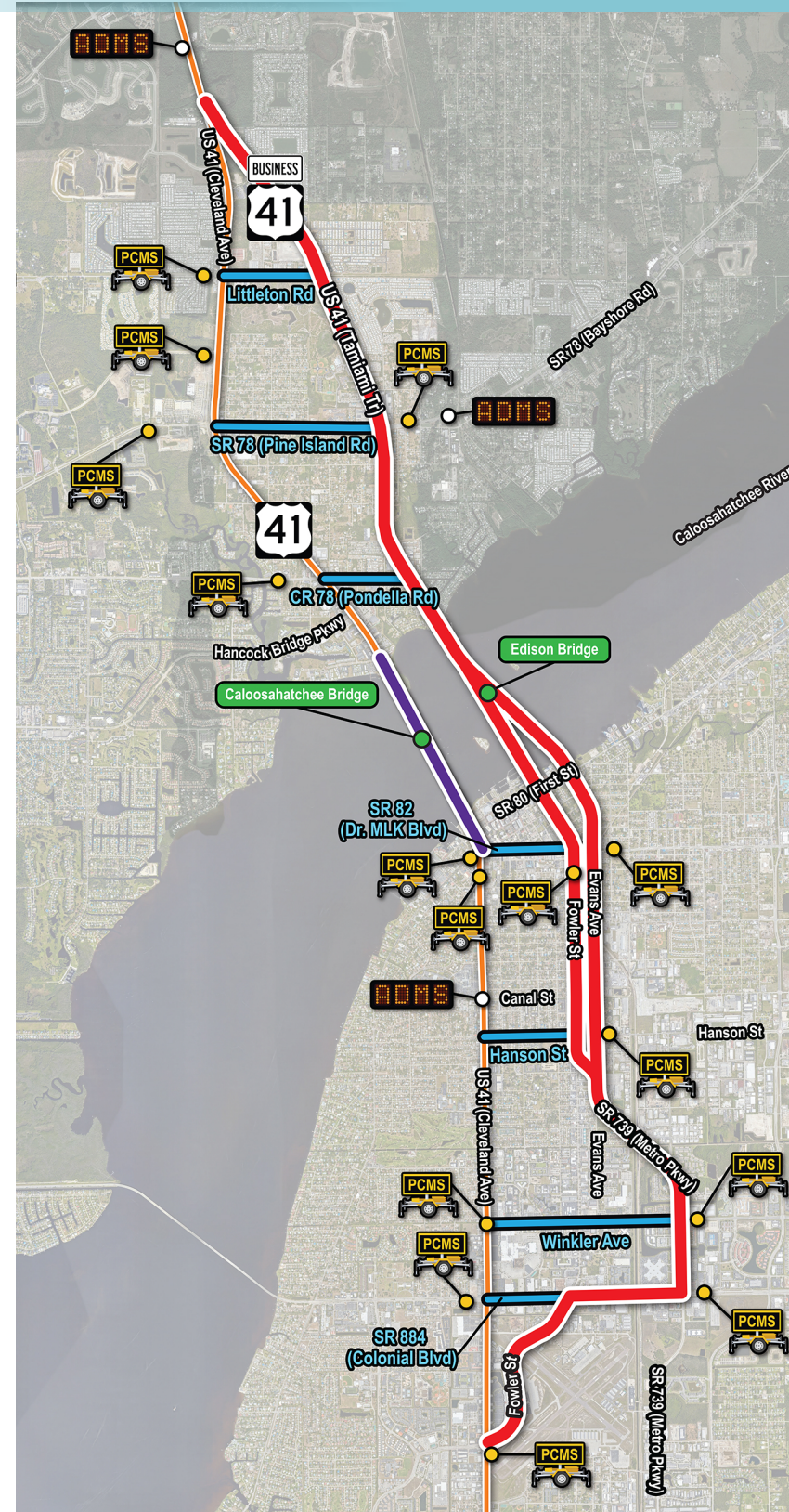
Example Sign Messaging

Sign Phase 1  
 FT MYERS  
 VIA US41  
 XX MINS

Sign Phase 2  
 VIA  
 US41 BUS  
 XX MINS

*Travel times to be updated in real time*

Example Wayfinding Signs to Be Used



# FDOT U.S. 41 (S.R. 45) over Caloosahatchee River Bridge Pedestrian Improvements - Fact Sheet

FROM FIRST STREET TO NORTH KEY DRIVE | LEE COUNTY, FLORIDA  
 FPID: 449015-1-52-01 | CONTRACT E1V60

### PROJECT DESCRIPTION

The Florida Department of Transportation (FDOT), District One, is designing improvements to U.S. 41 over the Caloosahatchee River Bridge from First Street to North Key Drive. This project is intended to improve pedestrian safety by modifying the existing bridge to accommodate an eight-foot sidewalk on the west side of the southbound bridge. This will be accomplished by installing new outside traffic railings, connecting the two

bridge decks in the center with a single median barrier, and restriping the lanes. The sidewalk will connect to existing sidewalks north and south of the bridge structure to create safe access for pedestrians to cross. Additionally, the current bridge lighting system will be replaced with new double armed poles on the new median barrier.

#### PROJECT COST

\$25 million

#### ESTIMATED CONSTRUCTION START

April 2024

#### ESTIMATED COMPLETION

Spring 2026

#### CONTACT INFORMATION

Katelyn Carmona  
 Community Outreach Specialist  
 239-744-9192  
 katelyn.carmona@dot.state.fl.us



Scan the QR code using your mobile device to view more information on the project website.

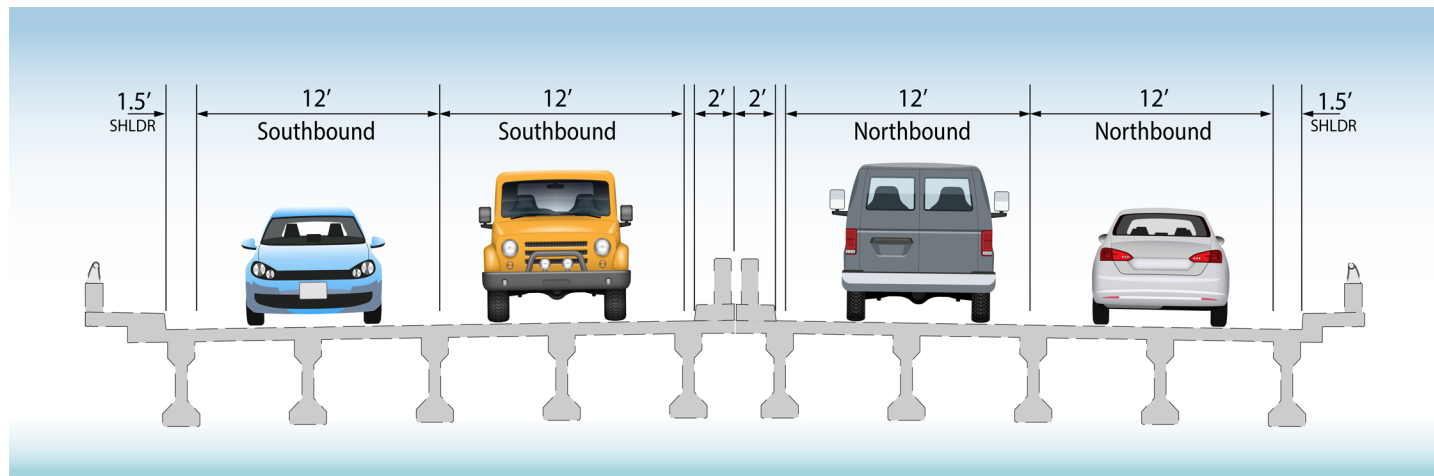


**BRIDGE IMPROVEMENTS**

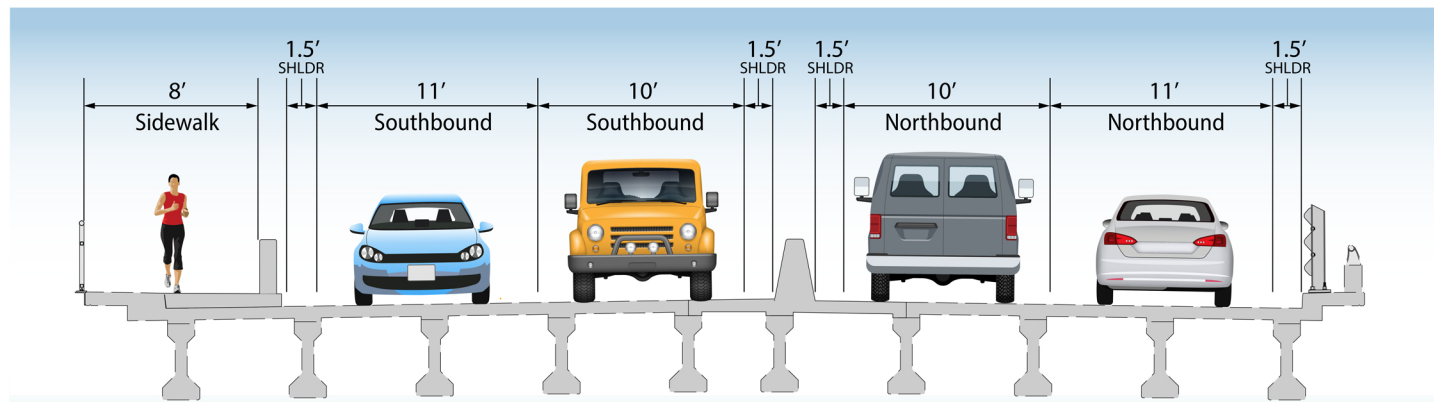
The new bridge improvements include providing a sidewalk along the west side of U.S. 41 over the Caloosahatchee River Bridge. This will be accomplished by installing new outside traffic railings, connecting the two bridge decks in the center, and restriping the lanes. A new single median barrier will separate the northbound and southbound traffic. New cross frames will also be installed in the middle bays between existing exterior steel girders under the deck. The bridge lighting system will be replaced with new double armed poles on the new median barrier.



**CURRENT CONDITIONS TYPICAL**

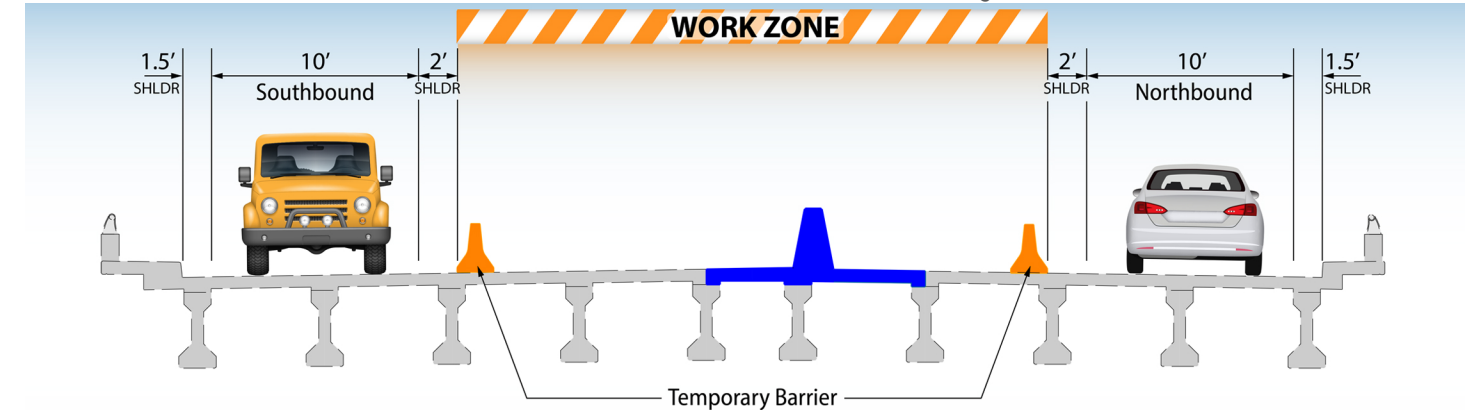


**PLANNED CONSTRUCTION TYPICAL RENDERING**



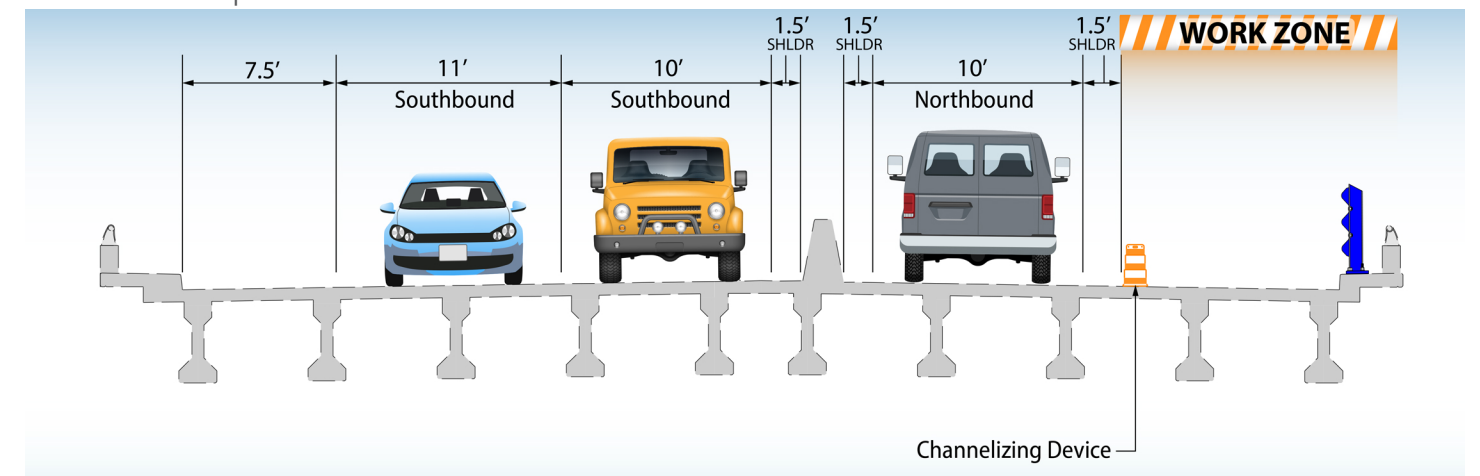
**PHASE I - Construction Duration April 2024 - December 2024**

The northbound and southbound lanes will be reduced to one-lane while the two bridge decks are connected in the middle.



**PHASE IA - Construction Duration April 2025 - December 2025**

Two lanes will be open on the southbound lanes while the northbound lane is reduced to one-lane.



**PHASE II - Construction Duration April 2025 - December 2025**

The southbound lane will be reduced to one-lane with a Work Zone erected to build the pedestrian walkway and barrier.

