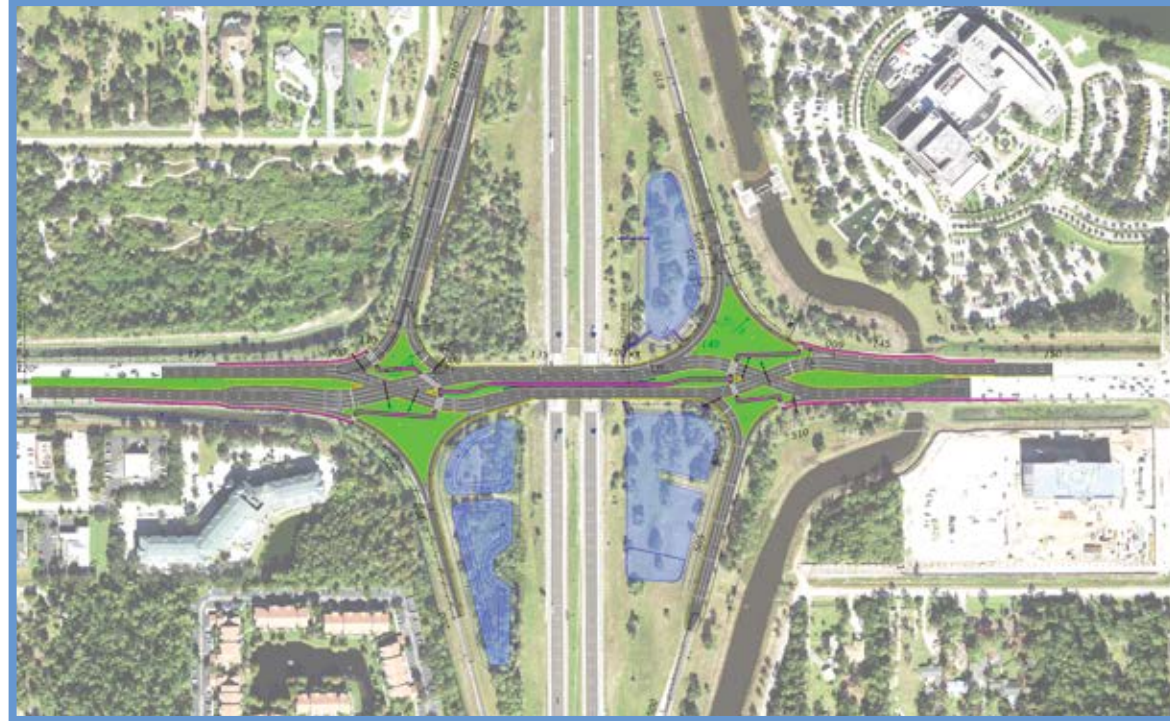




Florida Department of Transportation
 District One
 801 North Broadway
 Bartow, Florida 33830



I-75 at Pine Ridge Road Interchange Improvements

Financial Project Identification #: 445296-1

CONTACT US

Jennifer Dorning

Community Outreach Manager

239-338-7723

Jennifer.Dorning@dot.state.fl.us

OR

Michaela Zawodny

Community Outreach Specialist

239-410-8174

Michaela.Zawodny@dot.state.fl.us

JOIN US ON THE WEB

www.SWFLroads.com | @MyFDOT SWFL | facebook.com/MyFDOTSWFL

FDOT solicits public participation without regard to race, color, national origin, age, sex, religion, disability, or family status.

STAY INFORMED & SIGN UP FOR CONSTRUCTION ALERTS
 and view improvement plans
 by visiting
<https://www.swflroads.com/project/445296-1>
 or scanning the QR code




Financial Project Identification #: 445296-1

I-75 at Pine Ridge Road Interchange Improvements



February 18, 2025

CONSTRUCTION PROJECT

The interchange improvements include the design of a Diverging Diamond Interchange (DDI), which will significantly reduce delay on Pine Ridge Road, and reduce the number of conflict points to improve overall safety for all users. The DDI also offers the ability to accommodate future traffic volume growth. This project has been advanced as a part the Moving Florida Forward Infrastructure Initiative.

Improvements include:

- Reconstruction of the Pine Ridge Road Interchange converting to a Diverging Diamond Design
- Reconstruction of the interchange on and off ramps
- Construct pedestrian and bicycle accommodations through the interchange
- Install new signals at the ramps
- Resurface Pine Ridge Road through the project area

PROJECT SCHEDULE

PHASE	START	ACTIVITIES
PHASE I	March 2025	Mobilization Maintenance of Traffic Utility coordination Construct ramps (partial) & ponds Construct signal along north side Construct overhead sign structures
PHASE II	Early/Mid 2026	Construct pavement along Pine Ridge Road Finish construction and pave ramps
PHASE III	Mid/Late 2026	Construct curb, sidewalk and median barrier Complete signals and signs Final resurfacing and striping Install friction course along Pine Ridge Road and ramps Open DDI

* Schedule is tentative, subject to change, and weather permitting

ESTIMATED PROJECT COST

\$27.5 Million

CONSTRUCTION STARTS LATE FEBRUARY 2025



NORTH



Pine Ridge Rd



LEGEND

PROPERTY LINES	PROPOSED ROADWAY
EXISTING ROW LINE	EXISTING ROADWAY
EXISTING LIMITED ACCESS ROW LINE	EXISTING BRIDGE
SIDEWALK	POTENTIAL NEW TRAFFIC SIGNAL
STORMWATER PONDS	

NOTE: ROW = RIGHT OF WAY

