



# WELCOME

---

to the...

US 41 (14th St. W.) and SR 684  
(Cortez Rd. W.)

Safety Improvements  
Public Meeting

Visit us at...

<http://www.swflroads.com/project/449646-1>

Florida Department of Transportation

Manatee County

September 10, 2024

5 p.m. - 7 p.m.

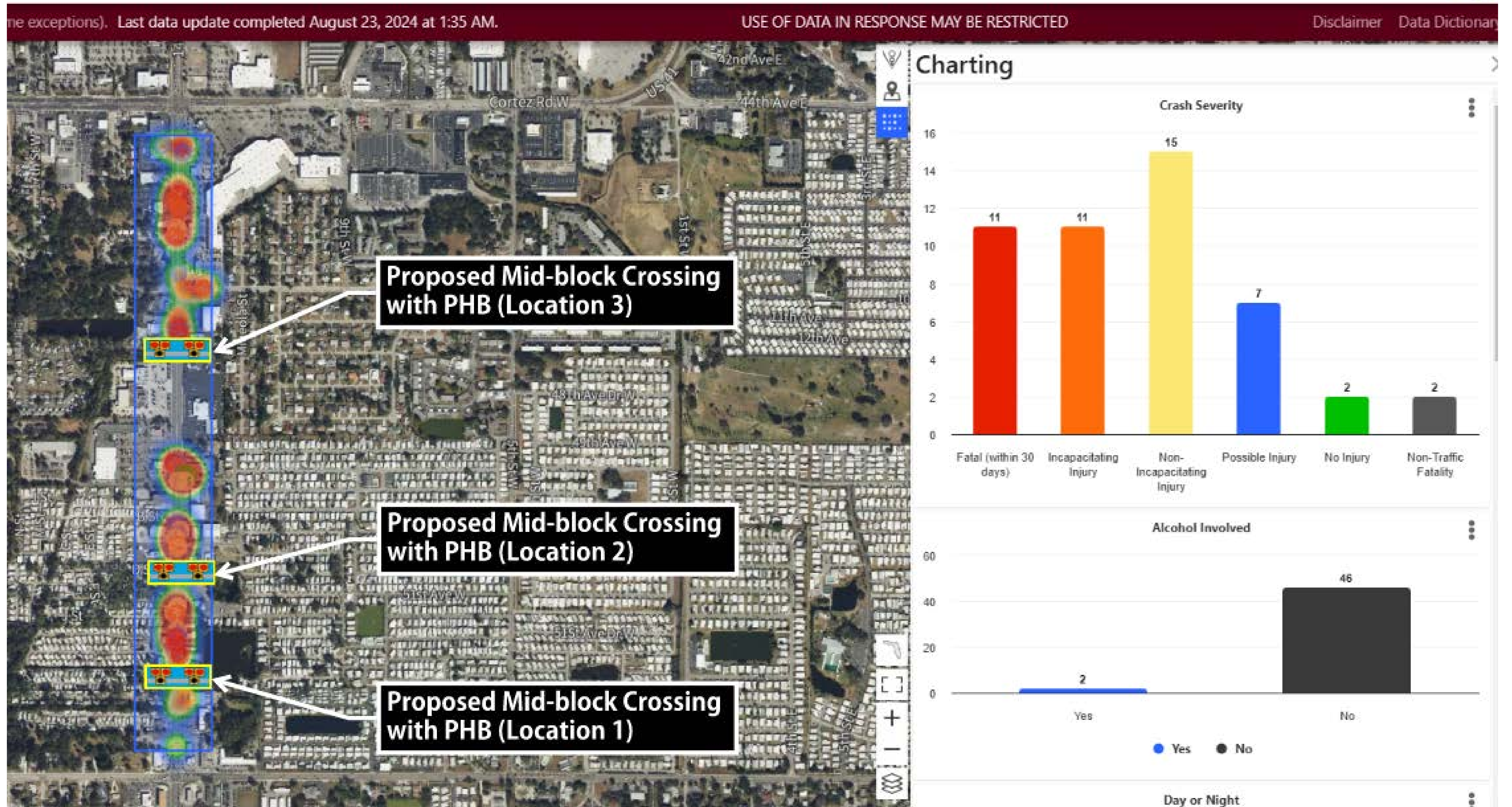
---



# US 41 (14TH ST. W.) AND SR 684 (CORTEZ RD. W.) SAFETY MODIFICATIONS

## Project Need

### EVENT ANALYSIS

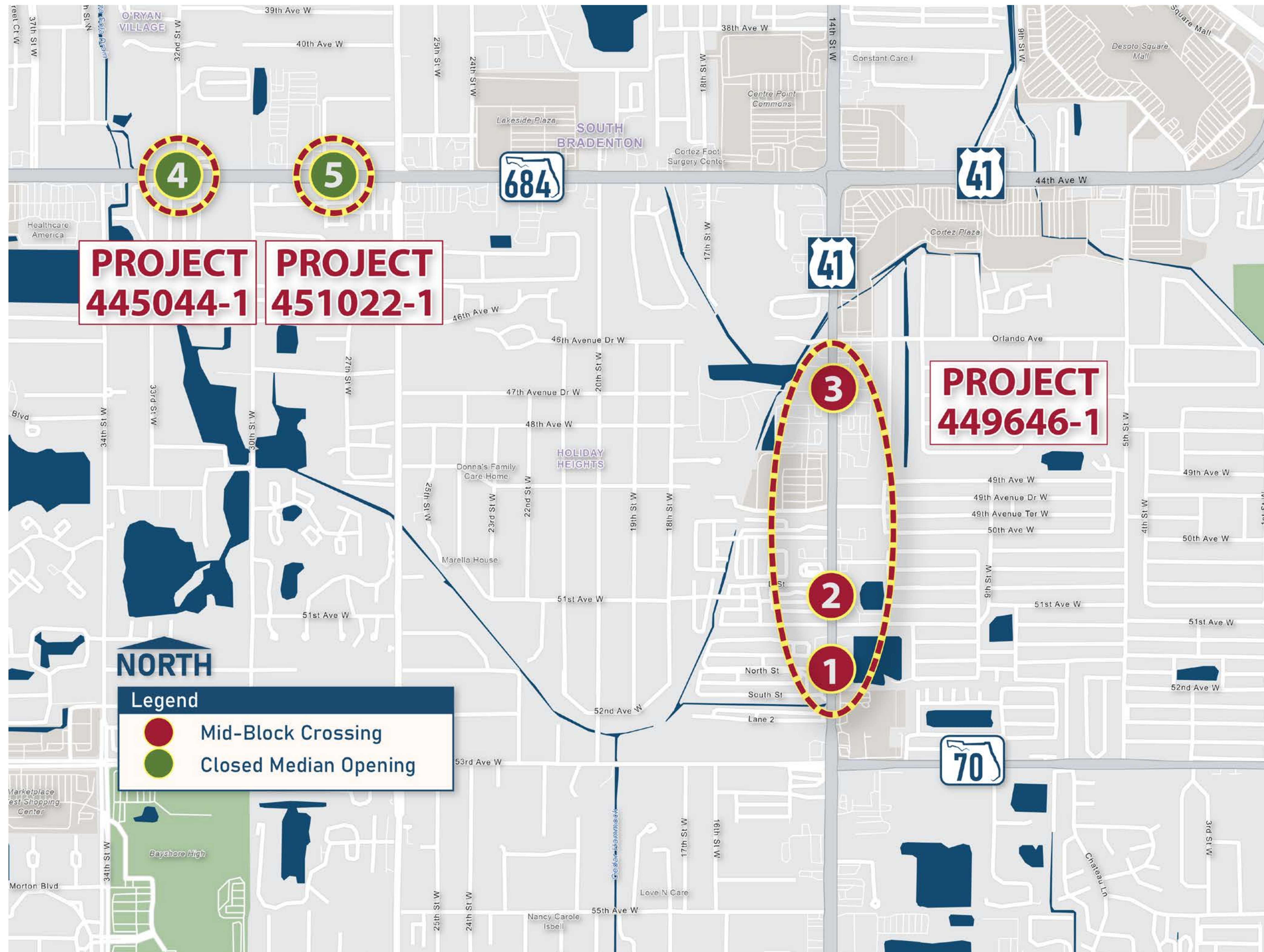






# US 41 (14TH ST. W.) AND SR 684 (CORTEZ RD. W.) SAFETY MODIFICATIONS

## Project Location



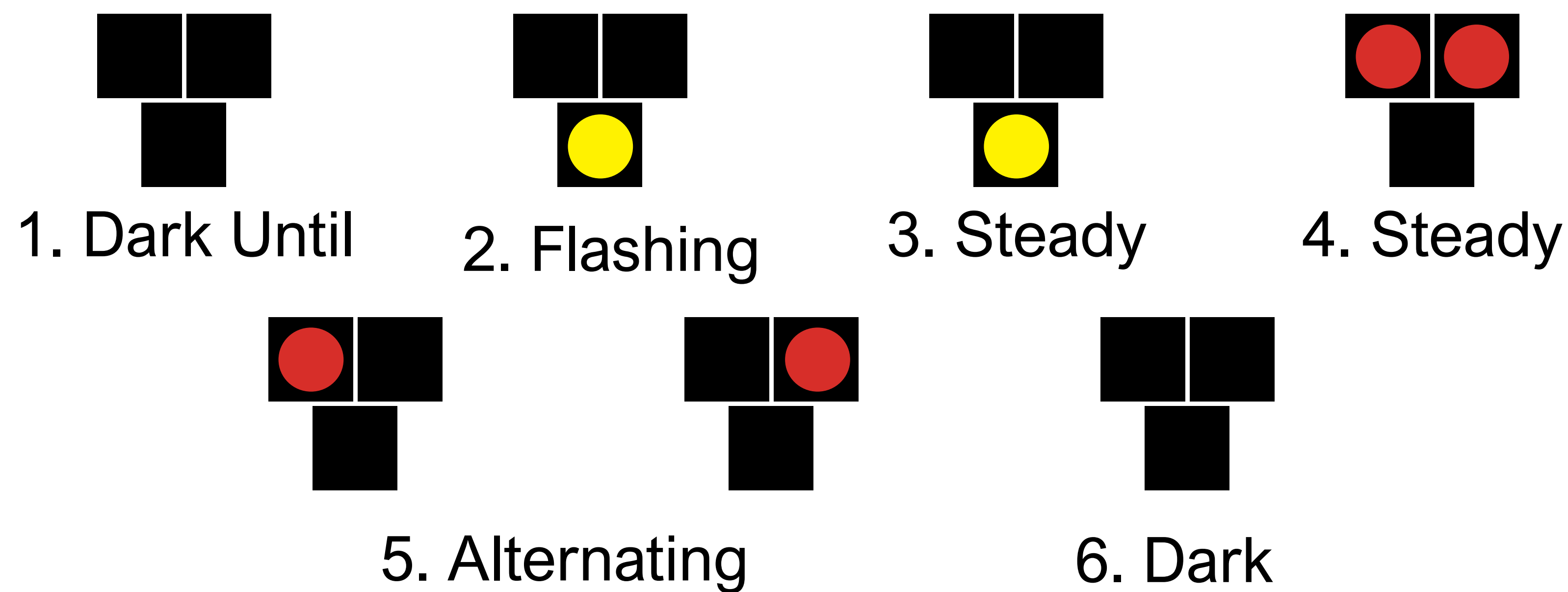




# US 41 (14TH ST. W.) AND SR 684 (CORTEZ RD. W.) SAFETY MODIFICATIONS

## Pedestrian Hybrid Beacons

### How do they work?



### Legend

- SY** Steady Yellow
- FY** Flashing Yellow
- SR** Steady Red
- FR** Flashing Red

## Pedestrian Hybrid Beacon (PHB)



**SAFE TRANSPORTATION  
FOR EVERY PEDESTRIAN**

COUNTERMEASURE TECH SHEET

High speeds and multiple lanes of traffic create challenges for pedestrians crossing at unsignalized locations.

PHBs can warn and control traffic at unsignalized locations and assist pedestrians in crossing a street or highway at a marked crosswalk.

PHBs can reduce pedestrian crashes by **55%**





# US 41 (14TH ST. W.) AND SR 684 (CORTEZ RD. W.) SAFETY MODIFICATIONS

## Schedule and Cost

Project 449646-1 (US 41: 3 mid-block crossing with PHB)

- Locations 1 - 3
- Estimated construction start: 2028
- Estimated construction cost: \$ 4.17 Million

Project 445044-1 (SR 684 Median Closure at 32nd Street W.)

- Location 4
- Estimated construction start: 2026
- Estimated construction cost: TBD

Project 451022-1 (SR 684 Median Closure at 28th Street W.)

- Location 5
- Estimated construction start: TBD
- Estimated construction cost: TBD

Notes:

- Temporary delineators may be installed in 2026 at SR 684 at 28th Street W when construction begins on SR 684 at 32nd Street.
- Crash data 2023 and beyond has yet to be location verified by FDOT Central Office.







# US 41 (14TH ST. W.) AND SR 684 (CORTEZ RD. W.) SAFETY MODIFICATIONS

## US 41 (14th St. W.) between 53rd Avenue and Orlando Ave.



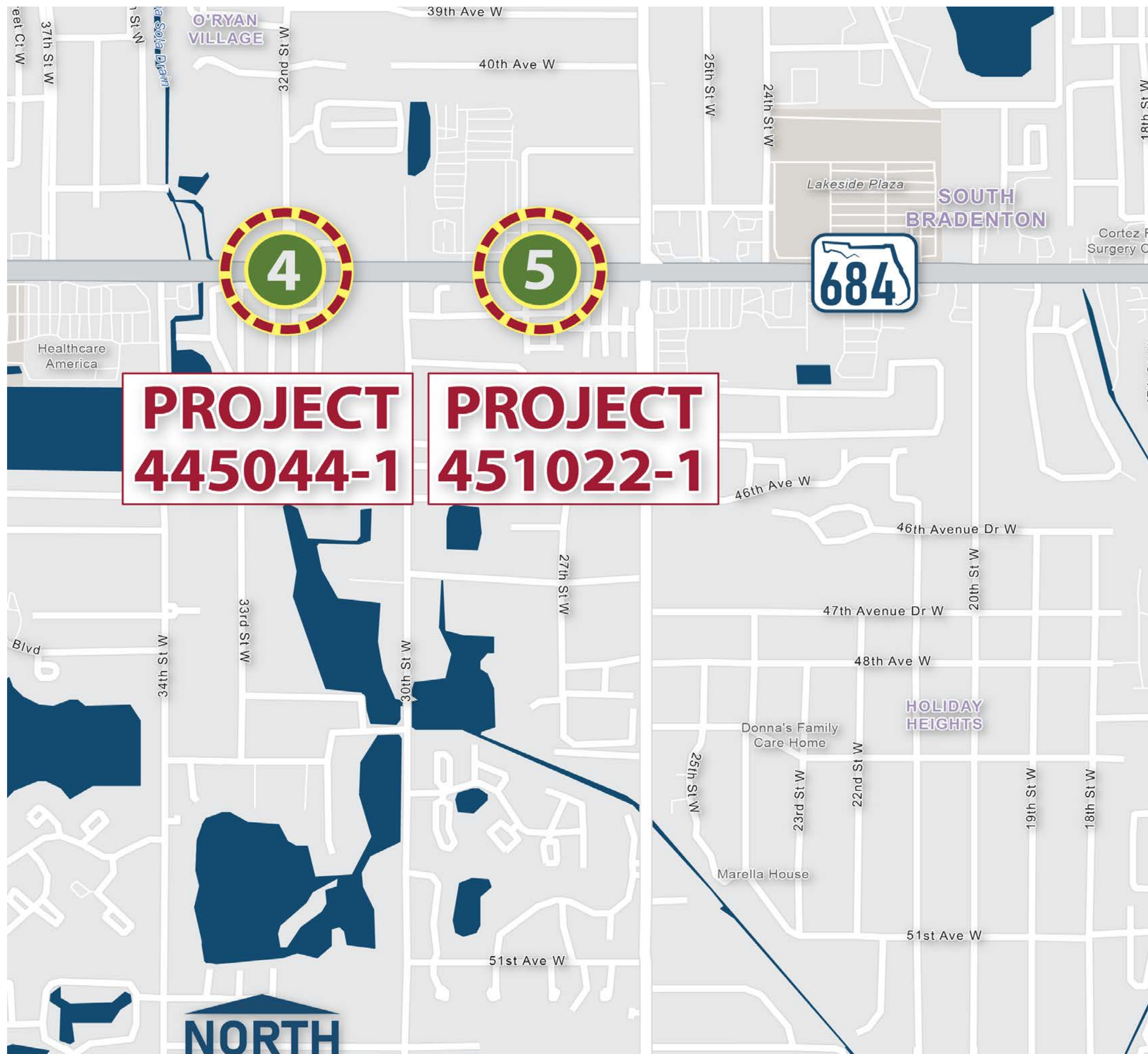
Three mid-block crossings with pedestrian hybrid beacons to allow pedestrians safer crossing alternatives.





# US 41 (14TH ST. W.) AND SR 684 (CORTEZ RD. W.) SAFETY MODIFICATIONS

## SR 684 at 32nd Street W. and 28th St. W.



Two modified  
median openings.





# US 41 (14TH ST. W.) AND SR 684 (CORTEZ RD. W.) SAFETY MODIFICATIONS

## How to Comment

### Submit your comment by September 20, 2024:

Turning in your comment form at the in-person event

**OR**

Mailing your comment form to:

Xiaoxue (Snow) Peng, PE

Florida Department of Transportation,

801 N. Broadway Ave.,

Bartow, FL 33830

**OR**

Emailing your comment to

Xiaoxue.Peng@dot.state.fl.us

**OR**

Through the project webpage

[www.swflroads.com/project/449646-1](http://www.swflroads.com/project/449646-1)



US 41 and SR 684  
Safety Improvements

Manatee County

### COMMENT FORM

Name: \_\_\_\_\_

Address: \_\_\_\_\_

Phone: \_\_\_\_\_ Email: \_\_\_\_\_

Comments:

\_\_\_\_\_  
\_\_\_\_\_  
\_\_\_\_\_  
\_\_\_\_\_  
\_\_\_\_\_  
\_\_\_\_\_  
\_\_\_\_\_  
\_\_\_\_\_  
\_\_\_\_\_  
\_\_\_\_\_  
\_\_\_\_\_  
\_\_\_\_\_  
\_\_\_\_\_

Please return this form to a project team member at this meeting or you may mail or email it, to the address below.

Florida Department of Transportation  
District One  
Xiaoxue (Snow) Peng  
801 N. Broadway Avenue  
Bartow, FL 33831

*Note: All comments are part of the meeting record and are available for any public records requests.*





# US 41 (14TH ST. W.) AND SR 684 (CORTEZ RD. W.) SAFETY MODIFICATIONS

## US 41 Location 1

### Between America's Super Pawn Shop and the Supreme Tax and Multi Services







# US 41 (14TH ST. W.) AND SR 684 (CORTEZ RD. W.) SAFETY MODIFICATIONS

## US 41 Location 2 North of the Wing House Bar & Grill

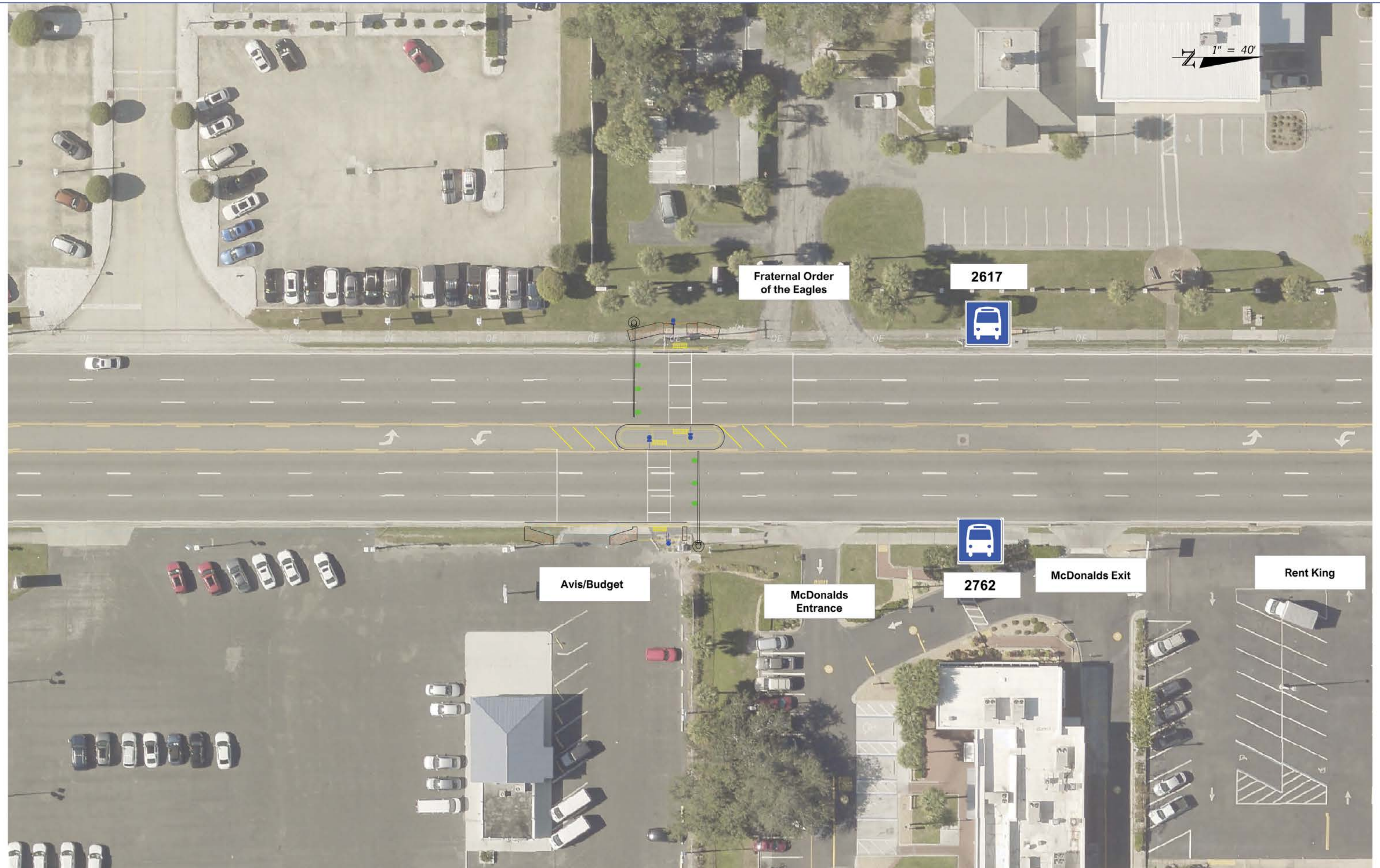






# US 41 (14TH ST. W.) AND SR 684 (CORTEZ RD. W.) SAFETY MODIFICATIONS

## US 41 Location 3 Between the Budget Car Rental and the McDonald's

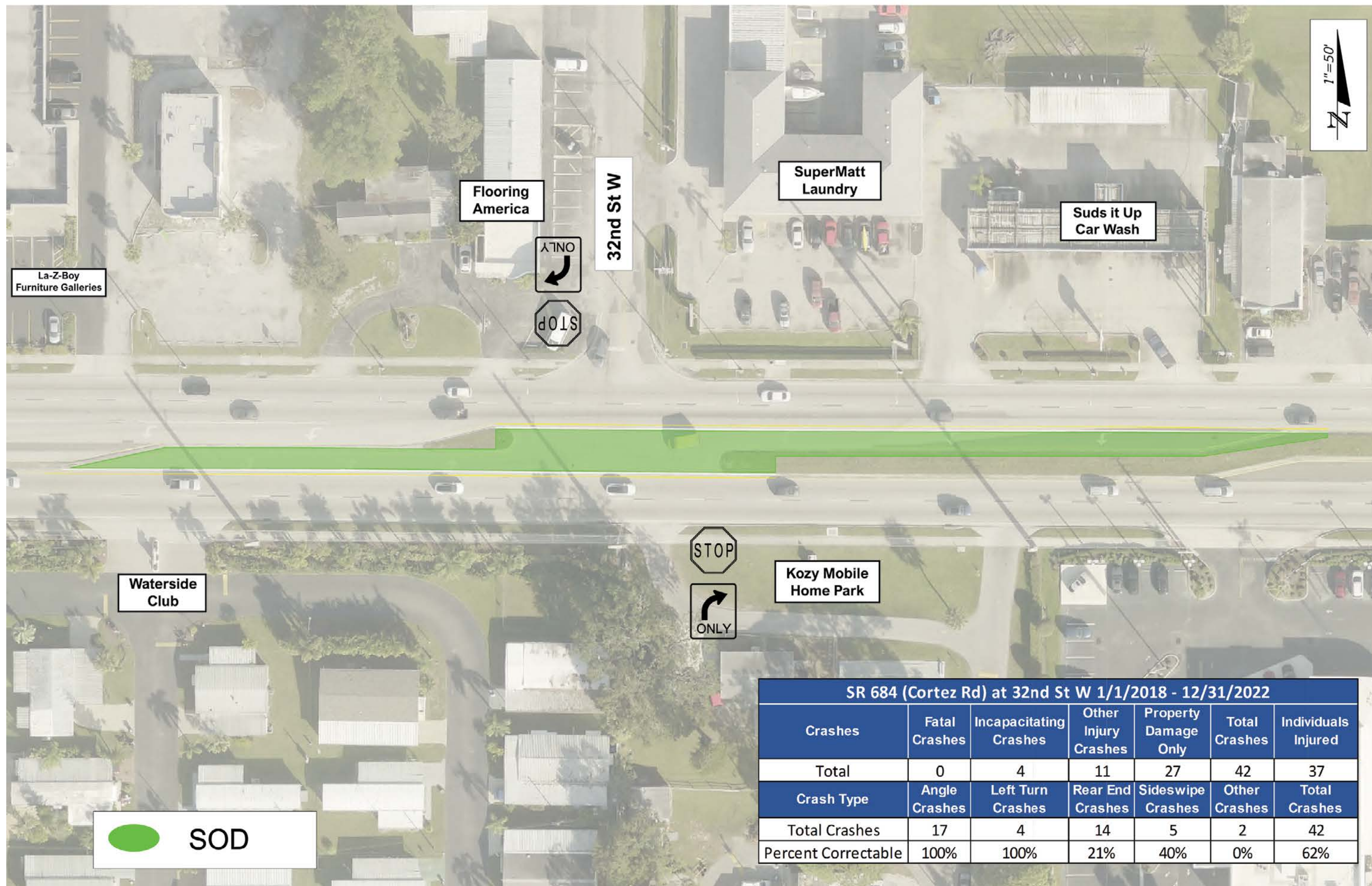






# US 41 (14TH ST. W.) AND SR 684 (CORTEZ RD. W.) SAFETY MODIFICATIONS

## Location 4: SR 684 (Cortez Rd. W) at 32nd Street W. Between Flooring America and Kozy Mobile Home Park driveway



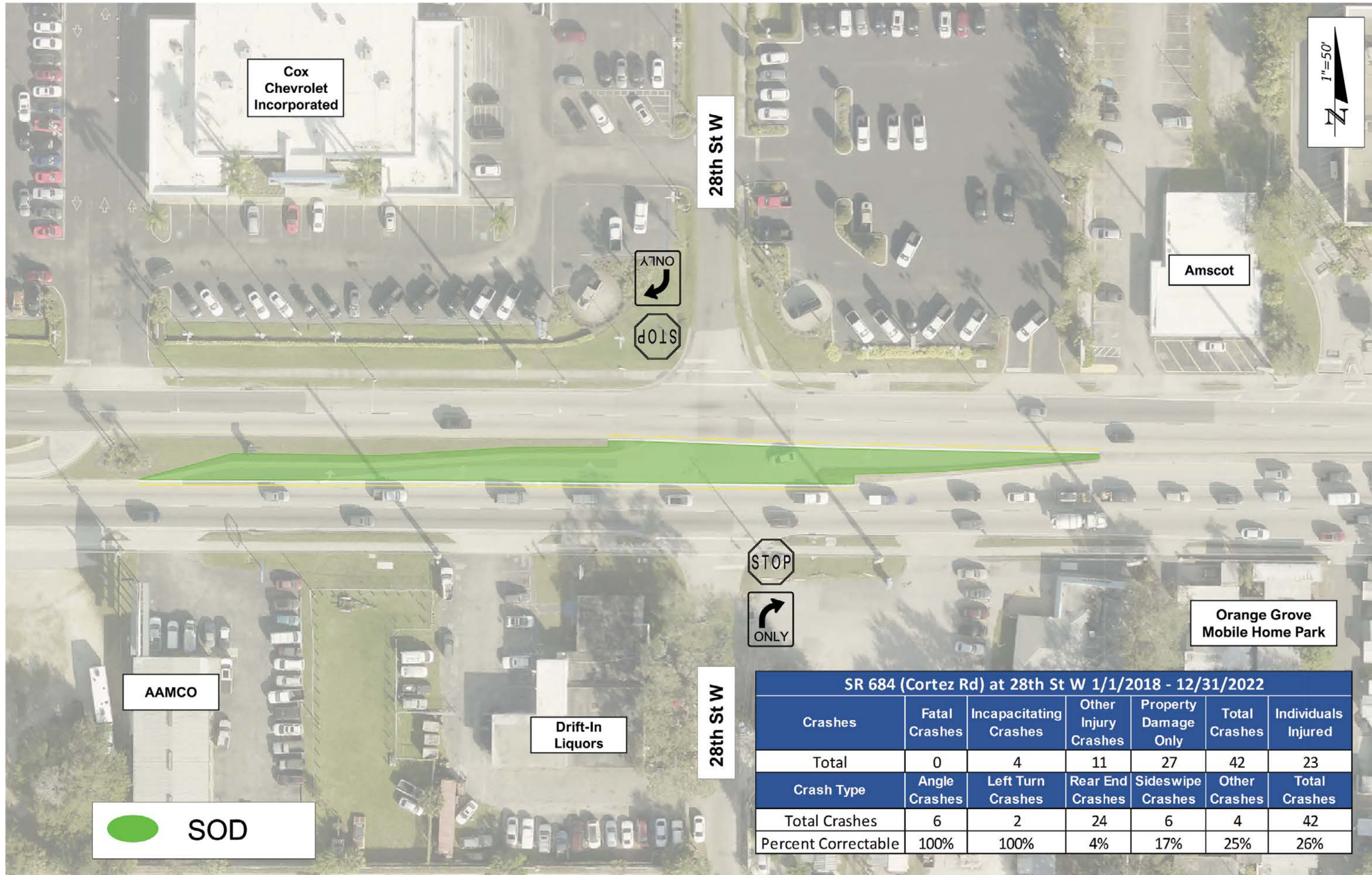
SR 684 (Cortez Rd) at 32nd St W 1/1/2018 - 12/31/2022						
Crashes	Fatal Crashes	Incapacitating Crashes	Other Injury Crashes	Property Damage Only	Total Crashes	Individuals Injured
Total	0	4	11	27	42	37
Crash Type	Angle Crashes	Left Turn Crashes	Rear End Crashes	Sideswipe Crashes	Other Crashes	Total Crashes
Total Crashes	17	4	14	5	2	42
Percent Correctable	100%	100%	21%	40%	0%	62%





# US 41 (14TH ST. W.) AND SR 684 (CORTEZ RD. W.) SAFETY MODIFICATIONS

## Location 5: SR 684 (Cortez Rd. W) at 28th Street W. Between the AAMCO and the Cox Chevrolet



SR 684 (Cortez Rd) at 28th St W 1/1/2018 - 12/31/2022						
Crashes	Fatal Crashes	Incapacitating Crashes	Other Injury Crashes	Property Damage Only	Total Crashes	Individuals Injured
Total	0	4	11	27	42	23
Crash Type	Angle Crashes	Left Turn Crashes	Rear End Crashes	Sideswipe Crashes	Other Crashes	Total Crashes
Total Crashes	6	2	24	6	4	42
Percent Correctable	100%	100%	4%	17%	25%	26%