



SR 29 LaBelle Bypass Feasibility Study

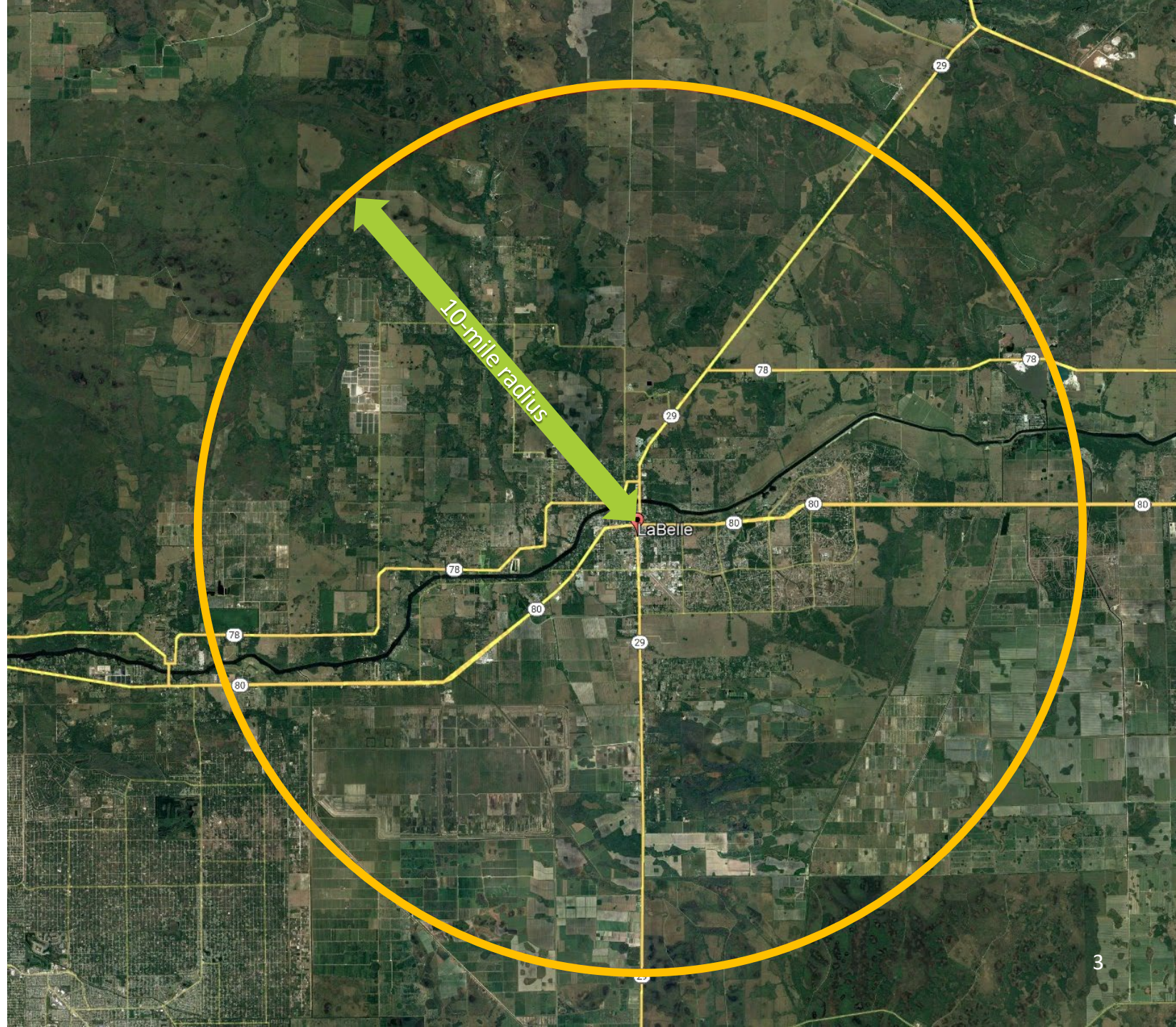
March 12, 2025
Stakeholder Meeting

Outline of Today's Presentation

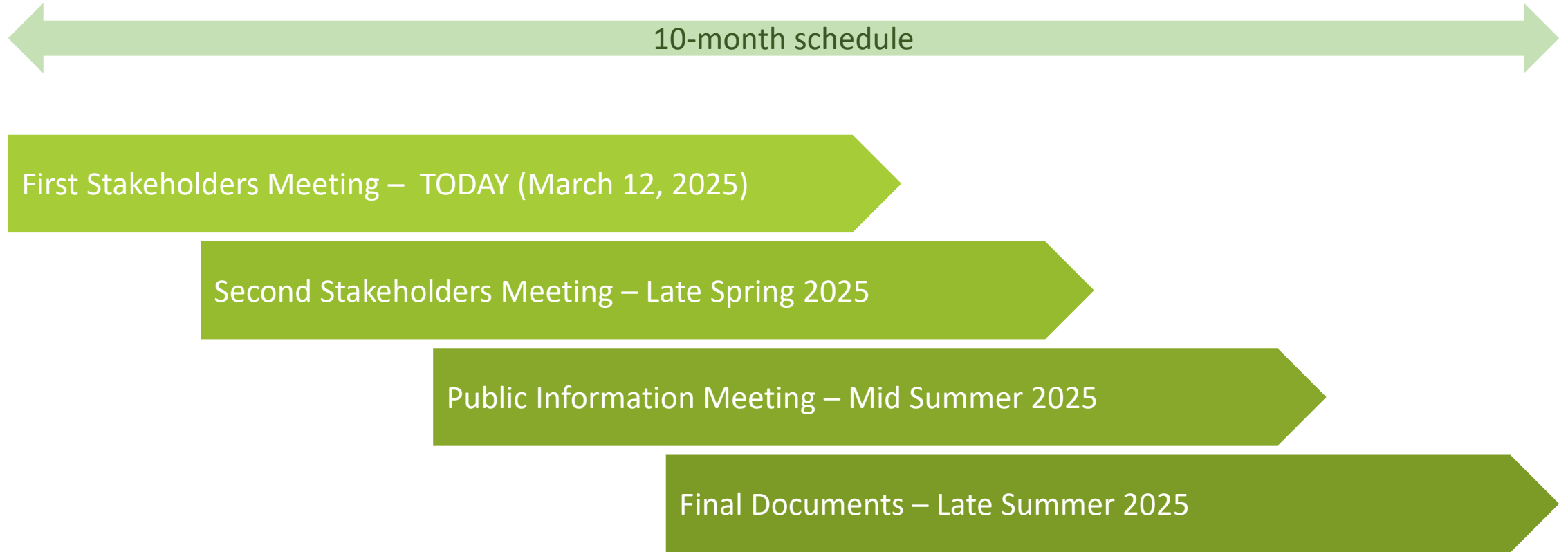
- Scope of Work
- Schedule
- Stakeholders
- Potential issues and opportunities
- Existing Conditions and Field observations

Scope of Work

- Evaluate the feasibility of an alternative corridor for S.R. 29 which would bypass the City of LaBelle
- 10-mile radius limit
- Will Include:
 - Existing Conditions Analysis
 - Alternatives Evaluation
 - Stakeholder Coordination



Schedule



Stakeholders

- LaBelle Downtown Revitalization Corporation
- The Greater LaBelle Chamber of Commerce
- Conservancy of Southwest Florida
- Immokalee Water and Sewer District
- Second Bridge Group
- Rotary Club
- Local Businesses
- SFWMD



CONSERVANCY
of Southwest Florida
OUR WATER, LAND, WILDLIFE, FUTURE.
PRESERVING OUR PARADISE FOR 60 YEARS



Potential Issues & Opportunities River Crossings

- Existing crossing at SR 29 drawbridge
- The nearest bridge to the west is 4.5 miles away (Fort Denaud Swing Bridge)
- The next bridge to the west is 11.2 miles away (Lee County Alva Draw Bridge)
- The nearest bridge to the east is 22 miles away (Moore Haven Bridge)



Google Images



6

Google Images

Existing Conditions

- Major Roadways
 - Context Class
 - Right of Way
- Intersections
- Existing Structures
- Freight
- Crashes, Statistics, and Safety
- Socio Cultural
 - Population
 - Demographics
 - Land Suitability
- Environmental and Cultural
 - Wetlands and Surface Waters
 - Water Quality
 - Floodplains
 - Soils and Potential Contamination
 - Protected Plants and Animals
 - Cultural Resources
 - Section 4(F)
- Land Use
 - Property Ownership
 - Existing and Future Land Use
 - Community Plans

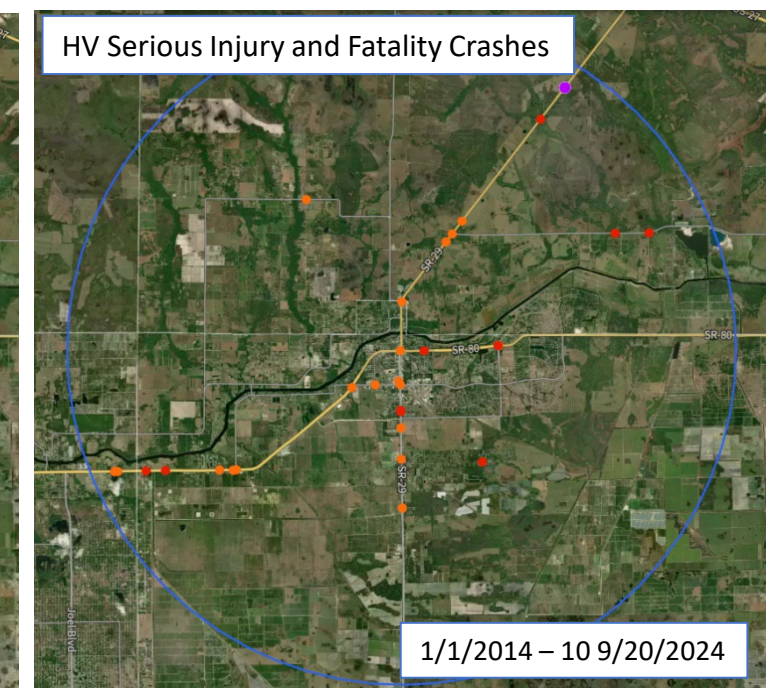
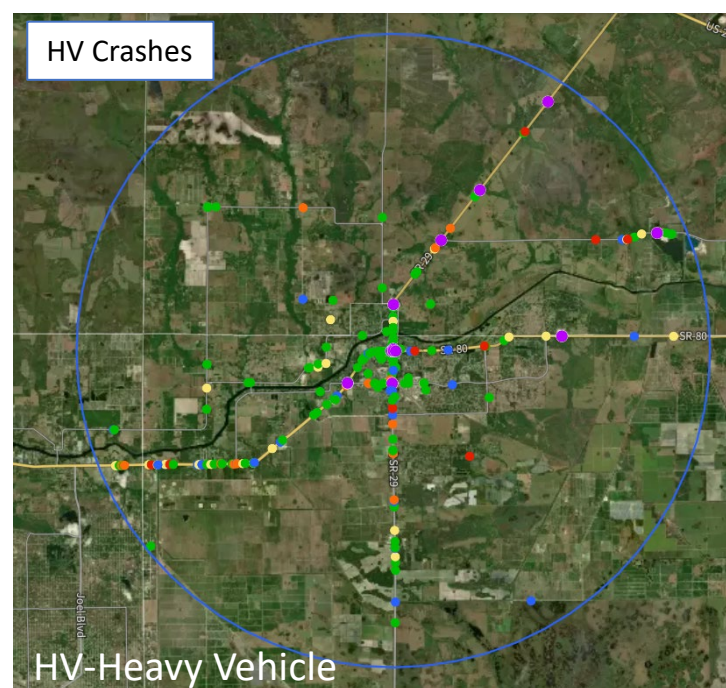
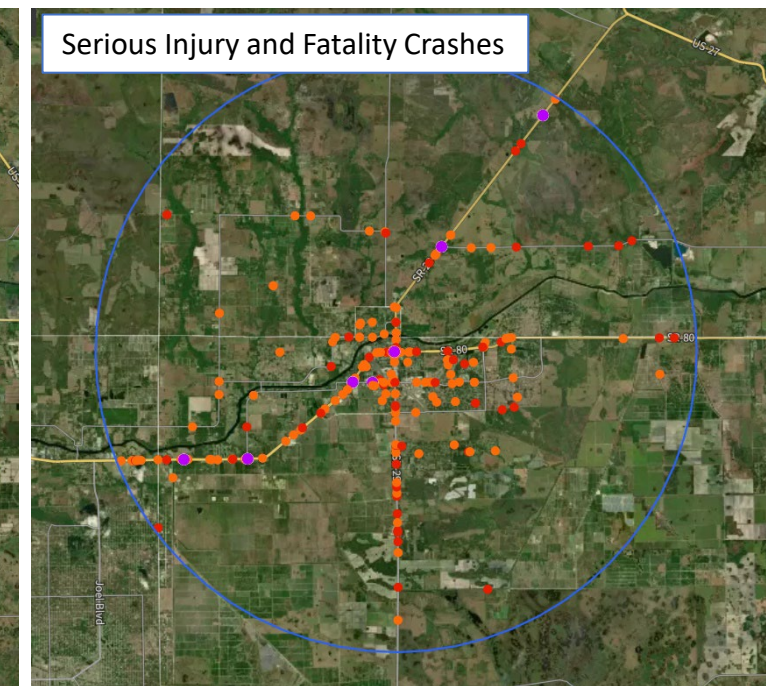
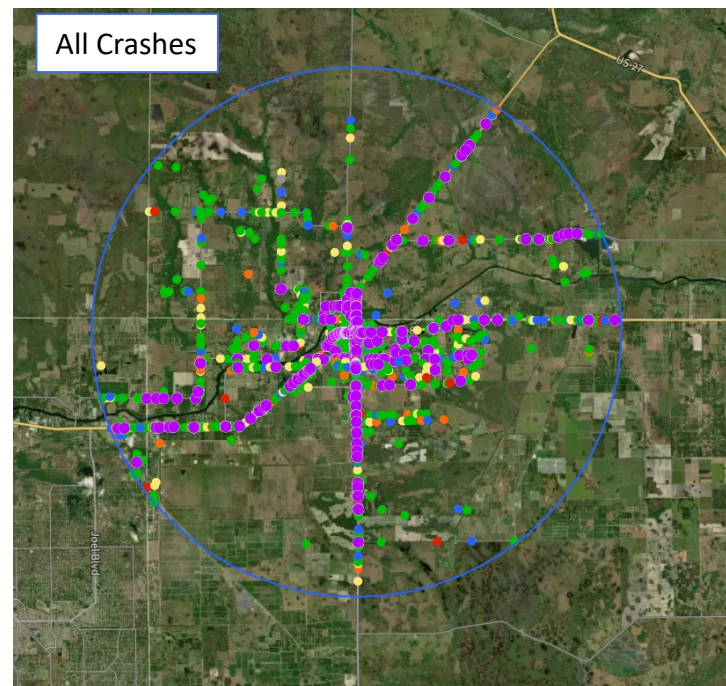
Existing Conditions

Safety

Crash Severity

- Fatal (within 30 days)
- Incapacitating Injury
- Non-Incapacitating Injury
- Possible Injury
- No Injury
- Multipoint

- Initial general review of 10 years and 9 months of data for all crashes with some focus on Heavy Vehicle (HV) crashes.
- More detailed analysis of 5 years and 10 months of data along
 - SR 29
 - SR 78
 - SR 80
 - Cowboy Way
 - Helms Road
- Detailed analysis included review of hard copy crash reports for fatal crashes

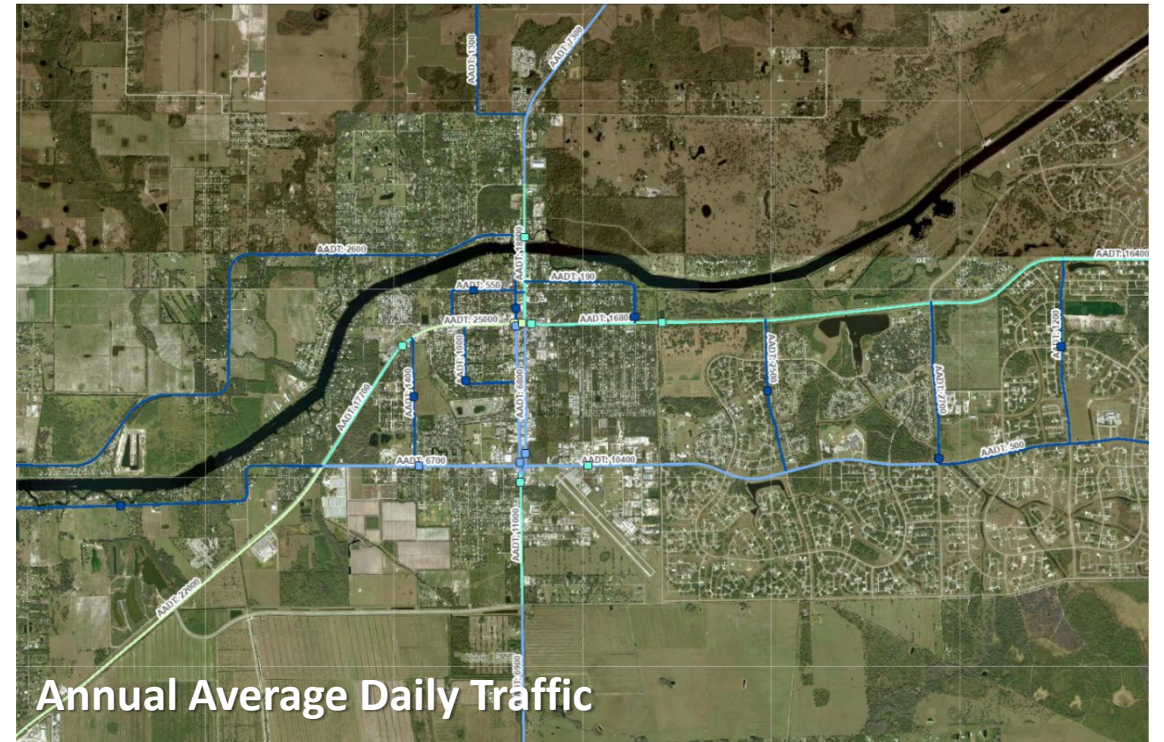


Existing Conditions

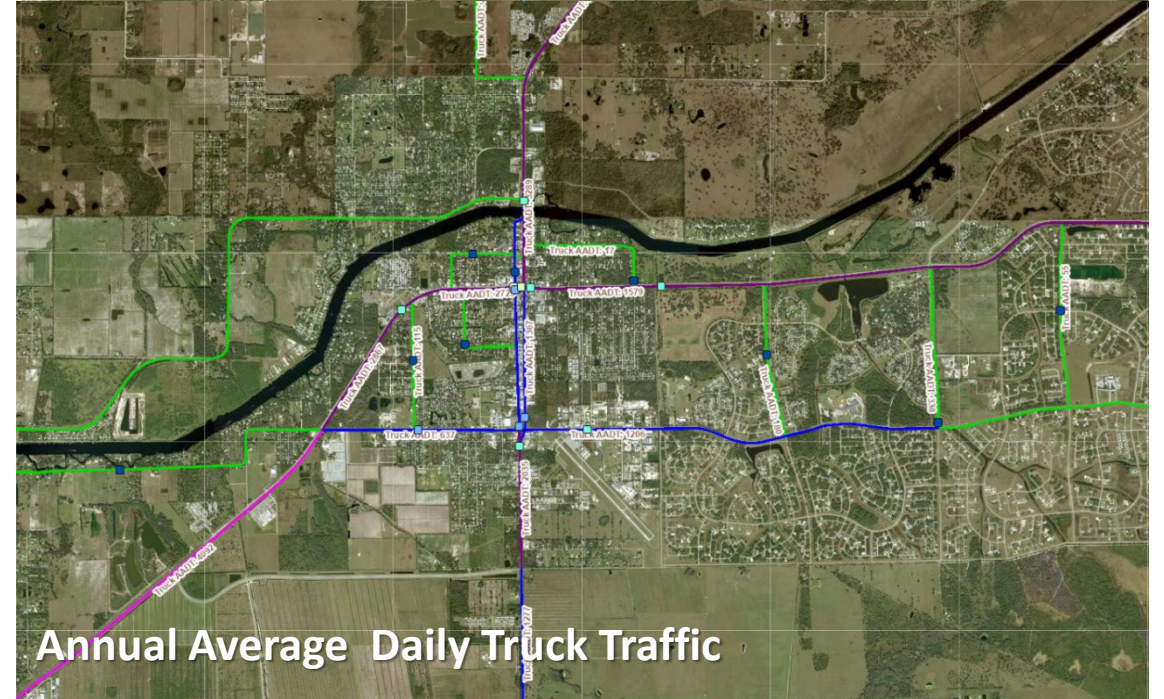
Freight Traffic

SR 29 and SR 80 are both truck routes and carry substantial truck traffic.

- Total Volumes
- Truck Volumes
- Truck Classifications
- Time of Day Volumes
- Origins and Destinations



Annual Average Daily Traffic

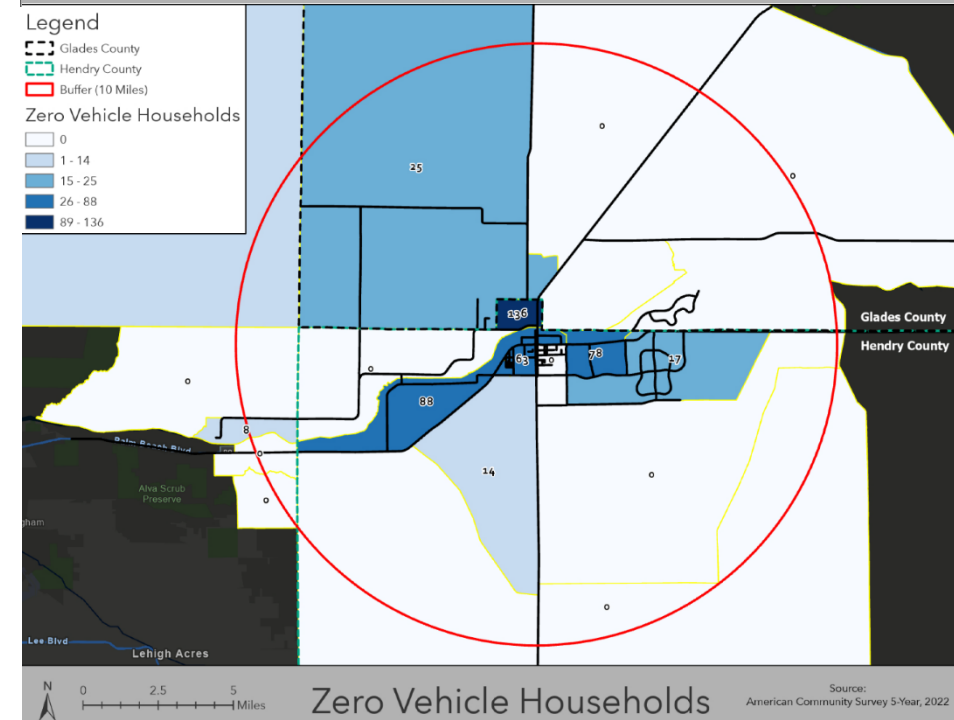
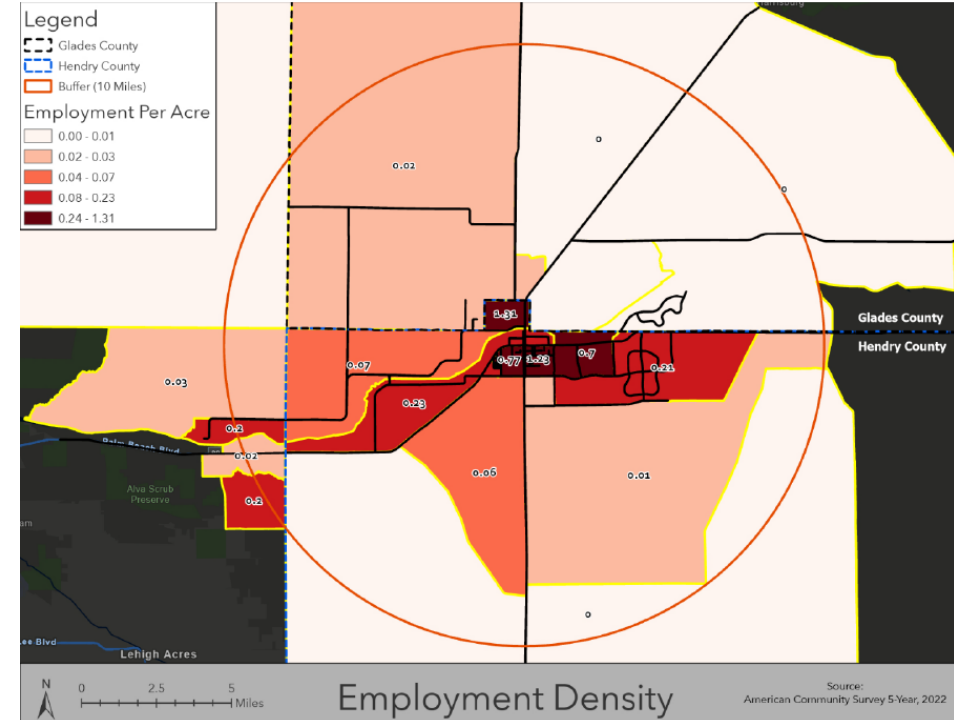


Annual Average Daily Truck Traffic

Existing Conditions

Sociocultural

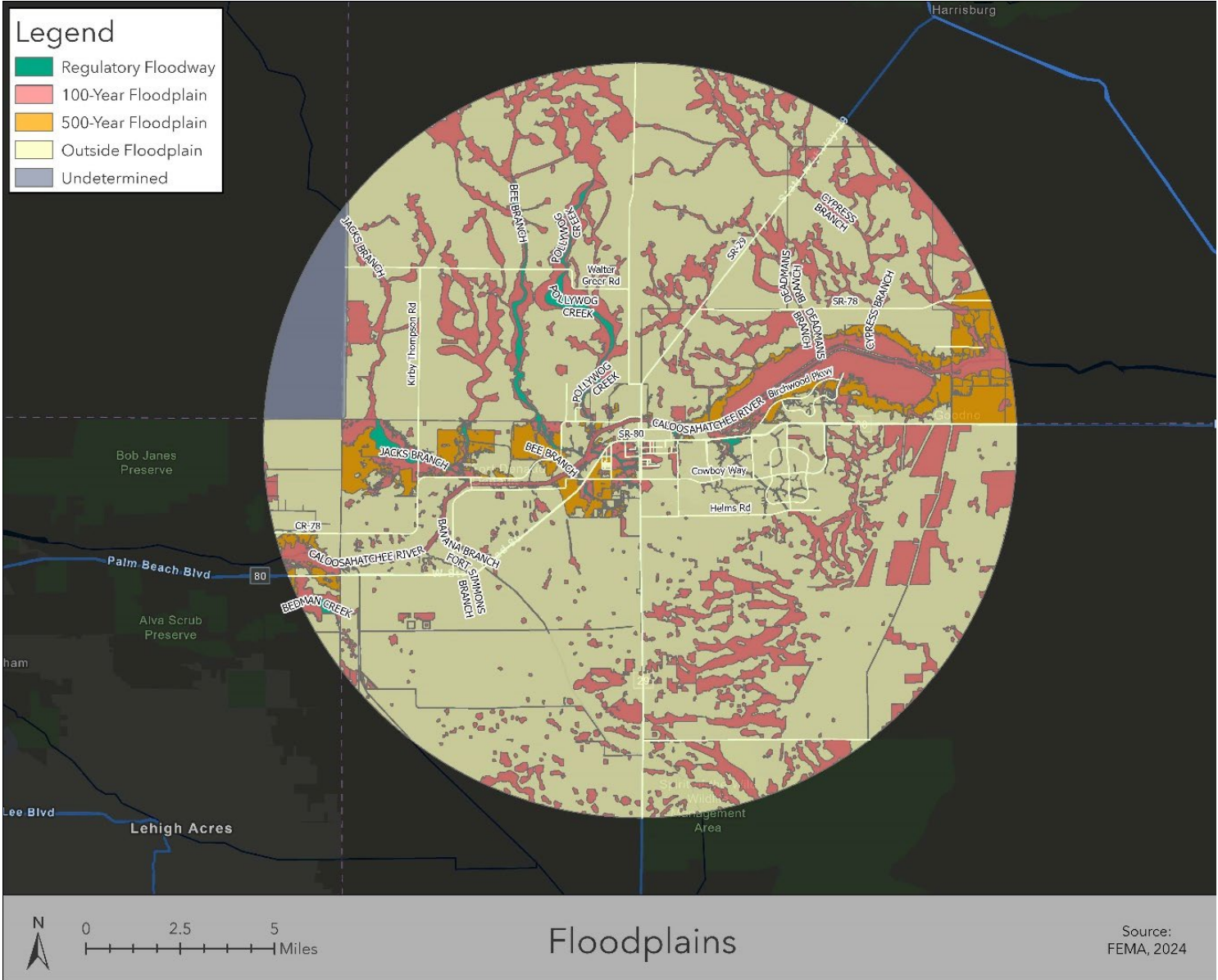
- Census Block Groups
- Median Age
- Median Income
- Employment Density
- Zero Vehicle Households
- Minority Population
- Households Below Poverty Level



Existing Conditions

Water resources permitting

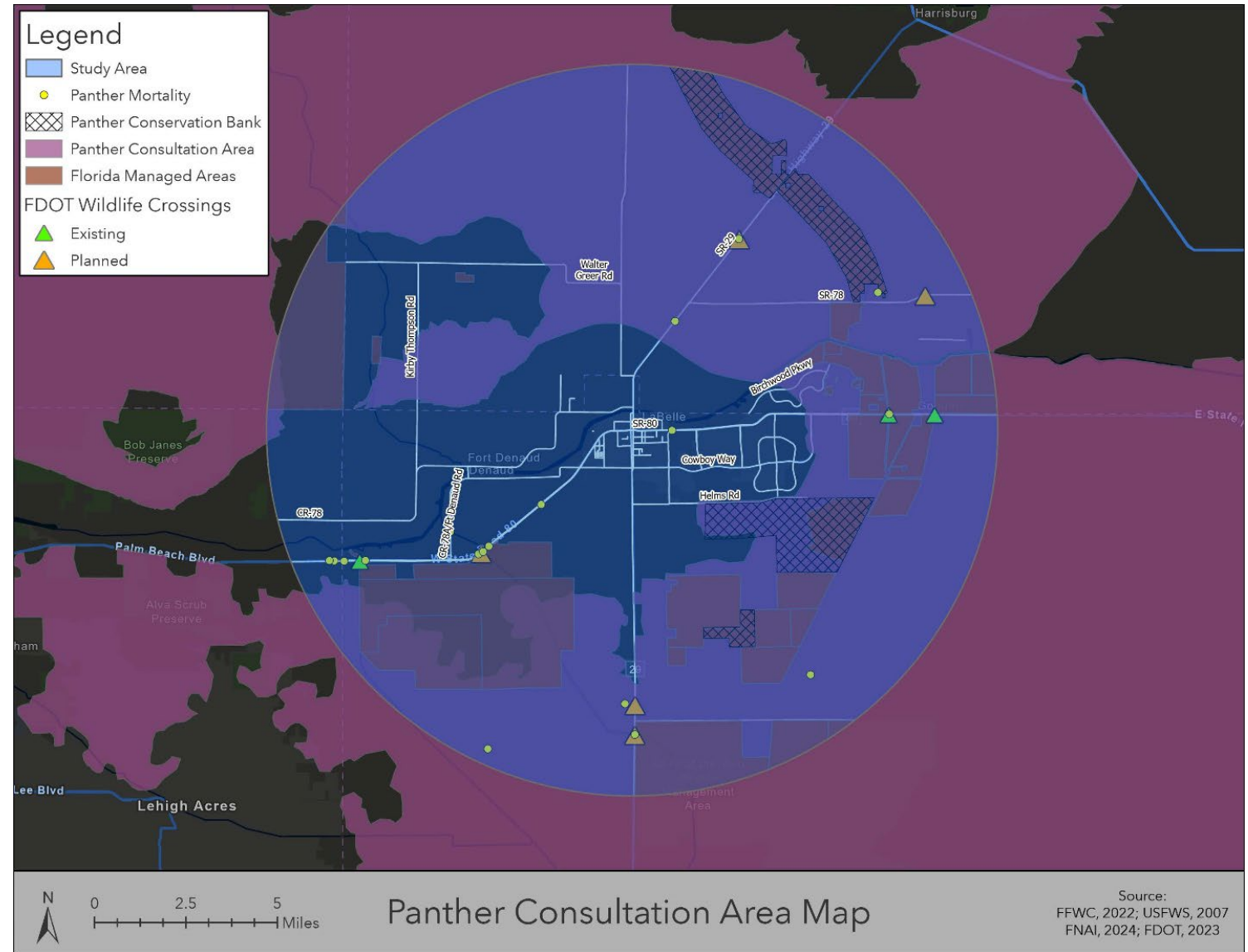
- Wetlands and Surface Waters
- Water Quality
- Floodplains



Existing Conditions

Environmental

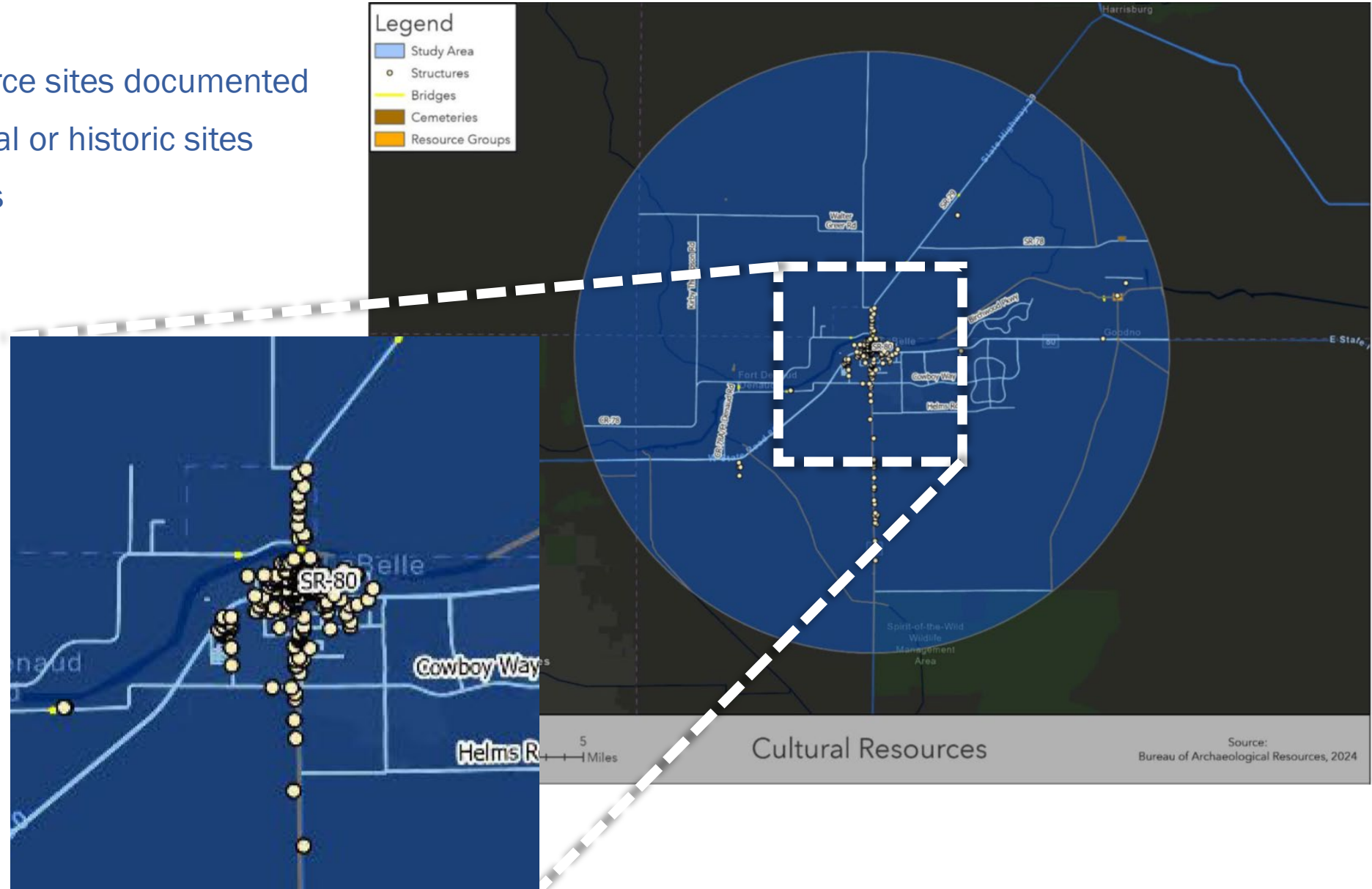
- Numerous conservation lands or conservation easements
- Federally protected animal species
- USFWS Consultation Areas
- Critical Habitats for animal and plant species
- Threatened plant species
- State and federally endangered plants (four federally endangered)
- Also, several unlisted species of concern
 - Florida Black Bear
 - Bald and Golden Eagles
 - Bats



Existing Conditions

Cultural Resources

- 285 cultural resource sites documented
- 43 are archeological or historic sites
- 16 resource groups
- 8 cemeteries
- 8 bridges
- 215 structures

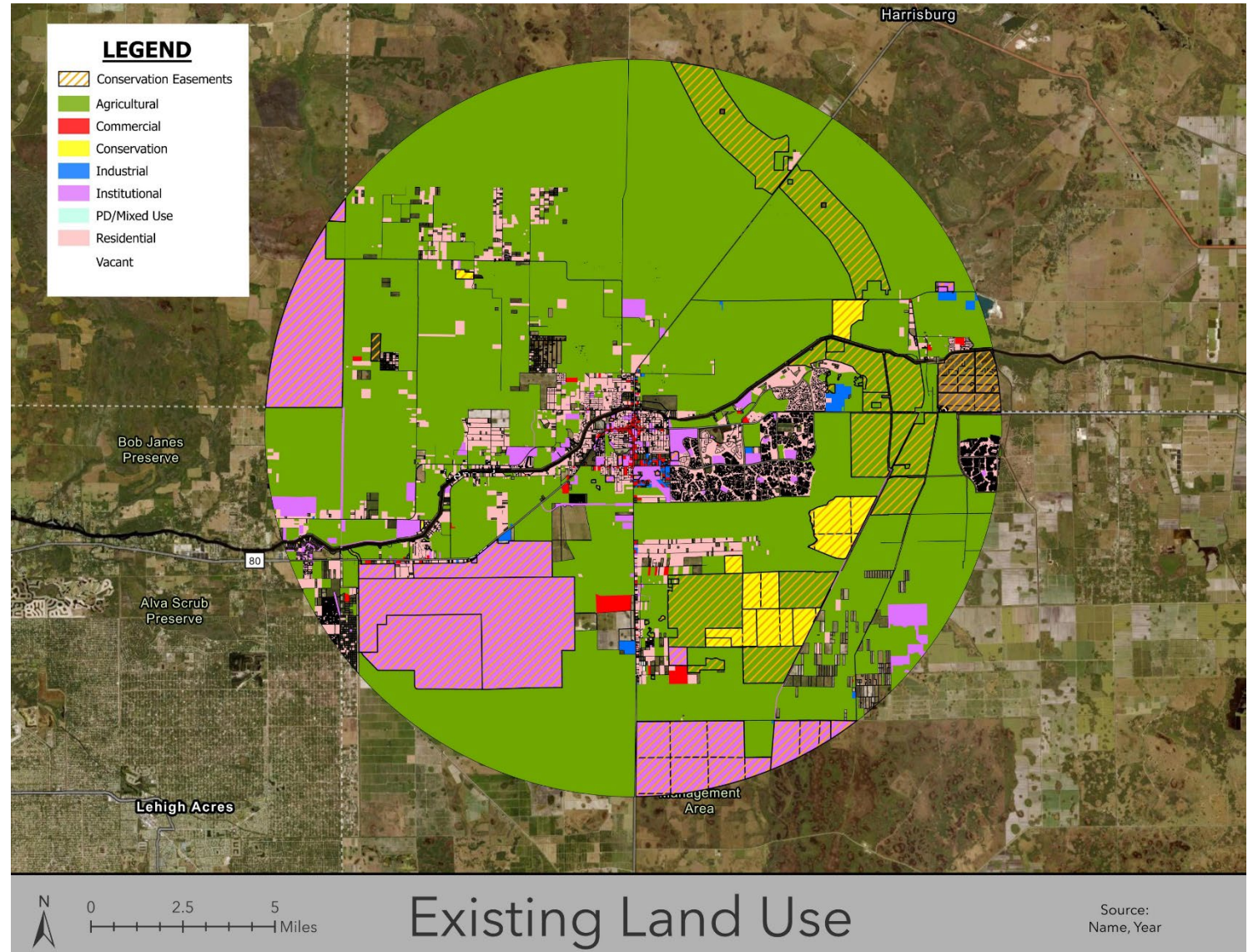


Existing Conditions

Land Use – Easements

Widely varied land uses

- Residential
- Agricultural
- Commercial
- Industrial
- Institutional
- Conservation lands - Numerous conservation easements




Potential Issues & Opportunities

Additional considerations

What additional potential issues and opportunities do you see for evaluating a bypass in the LaBelle area?

Overall Process

- Public Outreach
 - Agency Coordination and Engagement
 - Existing Conditions
 - Modified Methodology Memorandum
 - Define Initial Corridors
 - Alternatives Evaluation
- Field observations -
December 12, 2024
 - Existing Conditions Report -
January 27, 2025



FDOT
EVERY TIME YOU GET BEHIND THE
WHEEL, NO MATTER THE DISTANCE,
ALWAYS REMEMBER...
DON'T RELY ON LUCK,
JUST BUCKLE UP!

FDOT SAFETY MESSAGE



QUESTIONS?

Vitor Suguri
FDOT D1
Project Manager
Vitor.Suguri@dot.state.fl.us
(239) 225-1959

Theo Petrisch
Consultant
Task Manager
tap@landisevans.com
(407) 453-4161