



WELCOME

.....
**S.R. 776 from Merchants
Crossing to the
Sarasota County Line**

FPID No. 449652-1





Welcome

Ulises Valles
FDOT Project Manager



801 N. Broadway Avenue, Bartow, FL 33830



863-519-2253



Ulises.Valles@dot.state.fl.us





About The Public Meeting

This public meeting is being conducted:



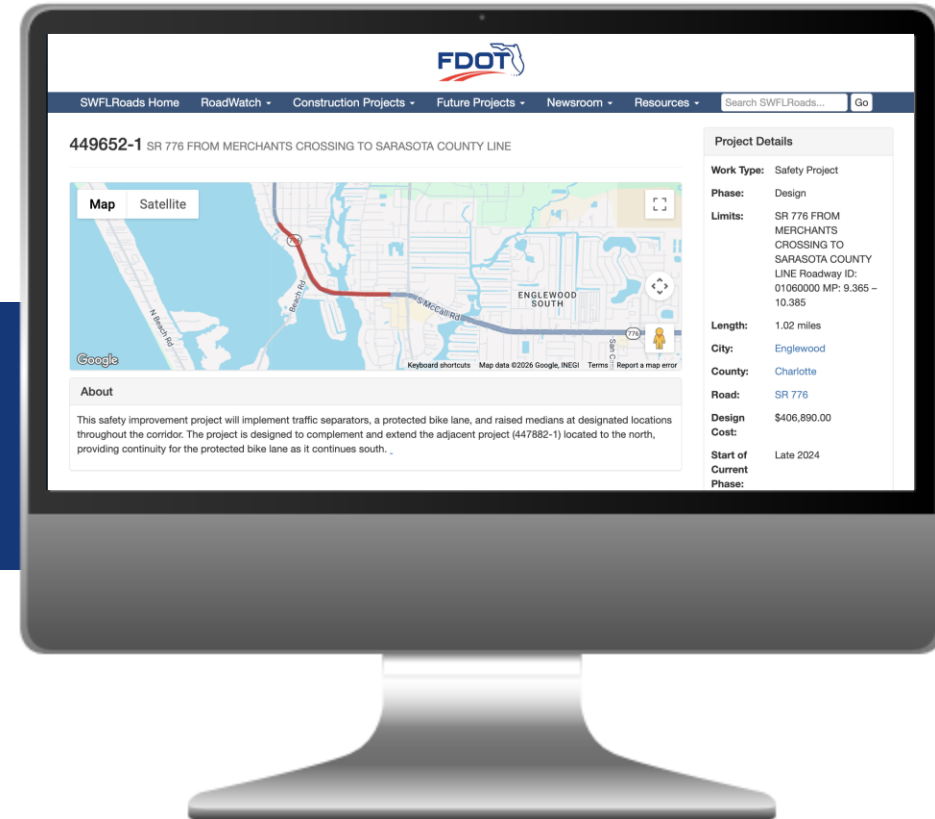
In-Person



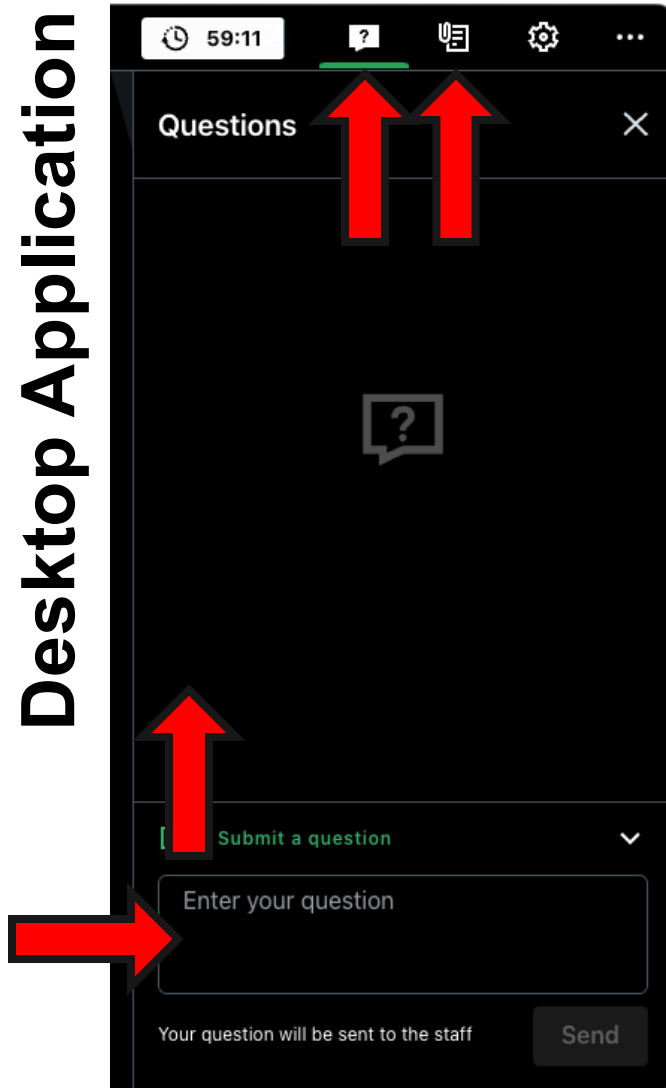
Virtual



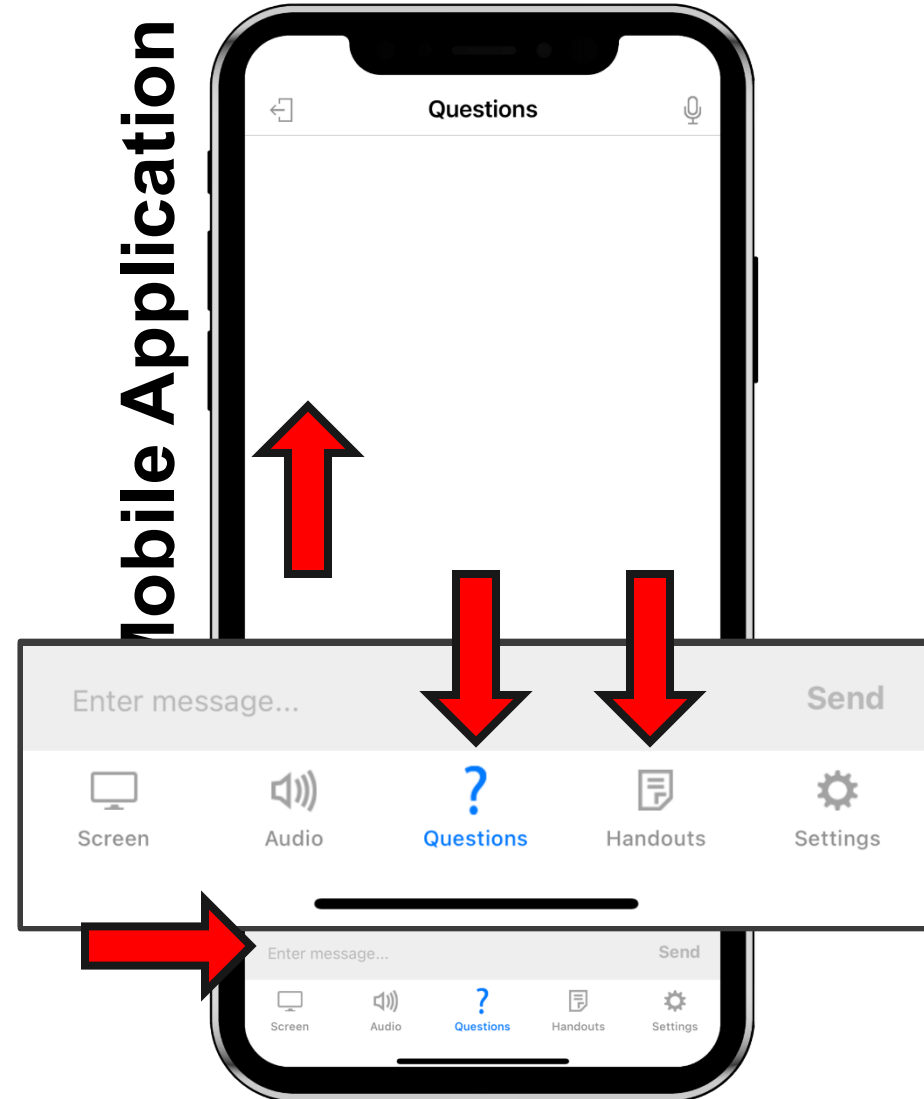
All meeting materials are available at swfroads.com/project/449652-1



Desktop Application



Mobile Application





Type a message in the question box on the GoTo Webinar control panel



Send an email to chuck@valerin-group.com



Call GoTo Webinar Support at
1-833-851-8340



Title VI of the Civil Rights Act of 1964

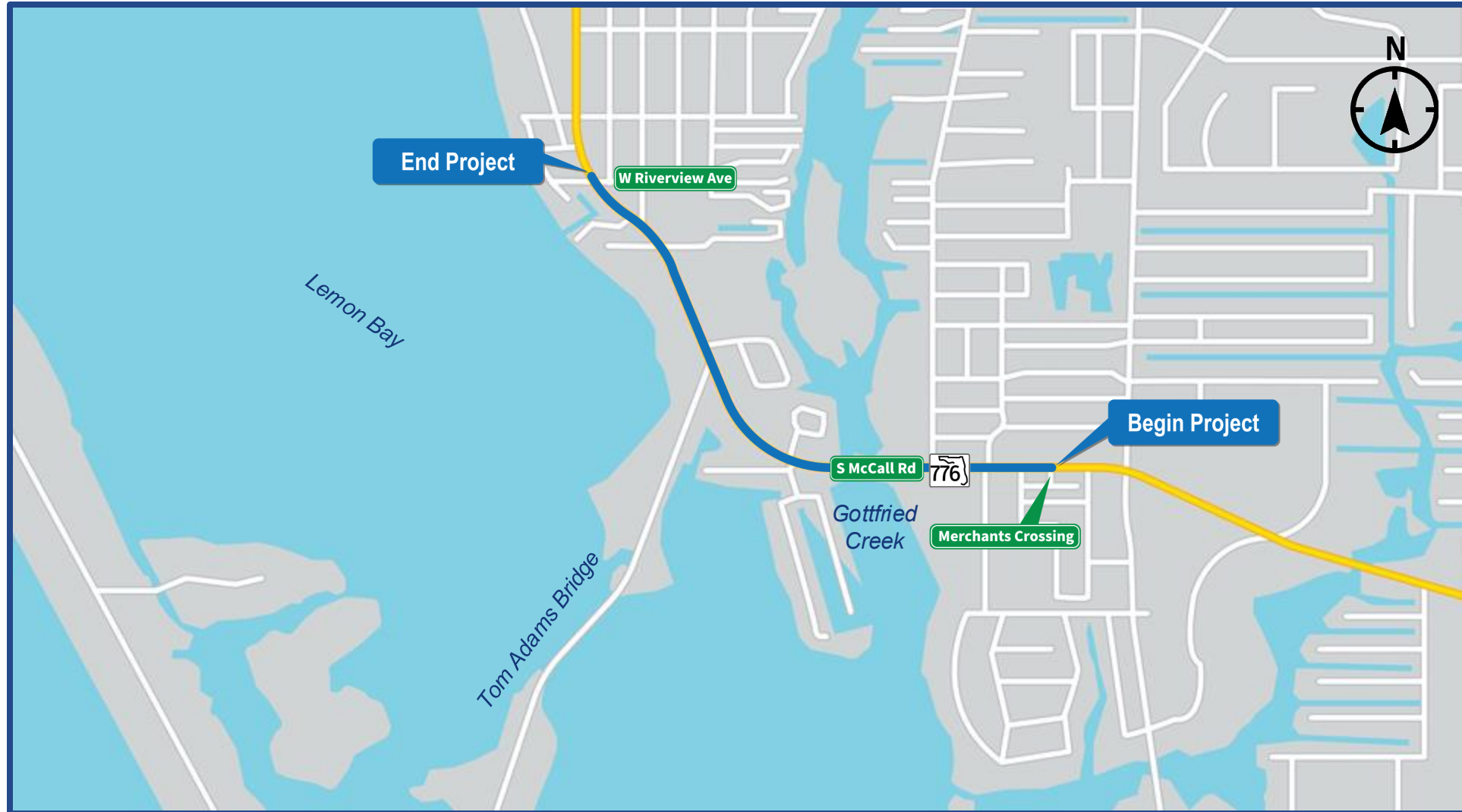
Title VI Compliance

Public participation is solicited without regard to race, color, national origin, age, sex, religion, disability, or family status. Persons wishing to express concerns relative to FDOT compliance with Title VI may do so by contacting:

Cynthia Sykes
District One Title VI Coordinator
801 N. Broadway Avenue
Bartow, FL 33830
863-519-2287
Cynthia.Sykes@dot.state.fl.us

Lisa Bethancourt
State Title VI Coordinator
605 Suwannee Street, MS 65
Tallahassee, FL 32399
850-414-4742
Lisa.Bethancourt@dot.state.fl.us

All inquiries or concerns will be handled according to FDOT procedure and in a prompt and courteous manner.

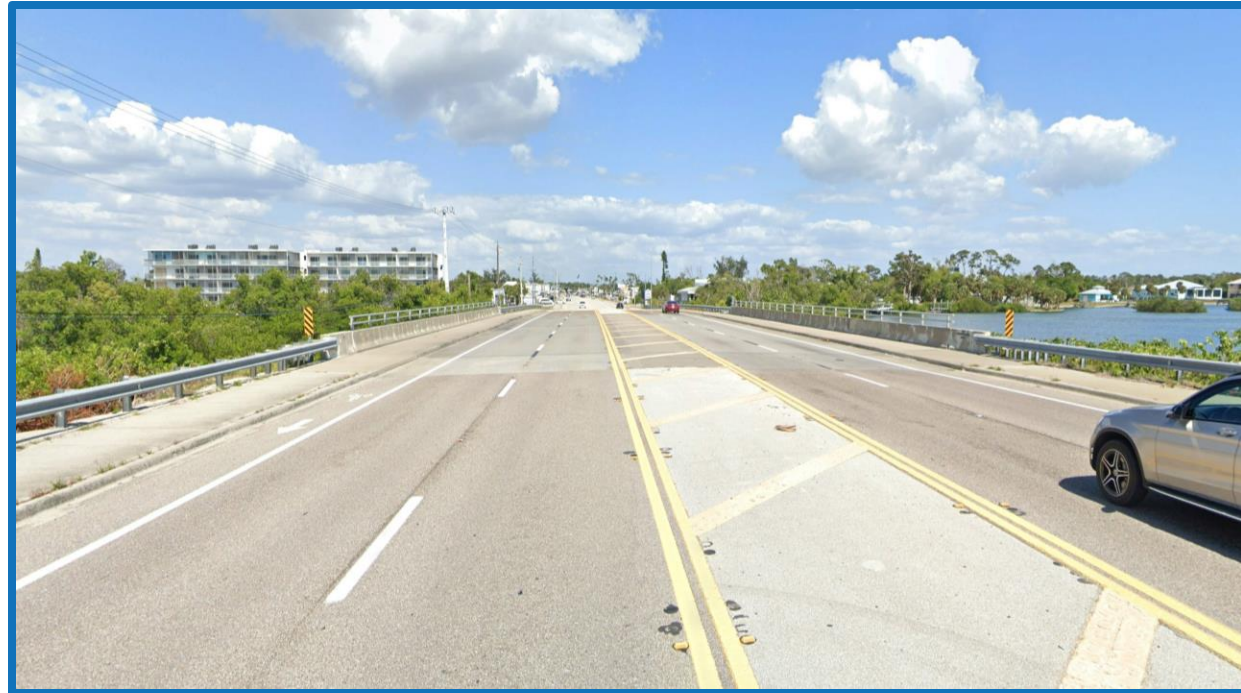




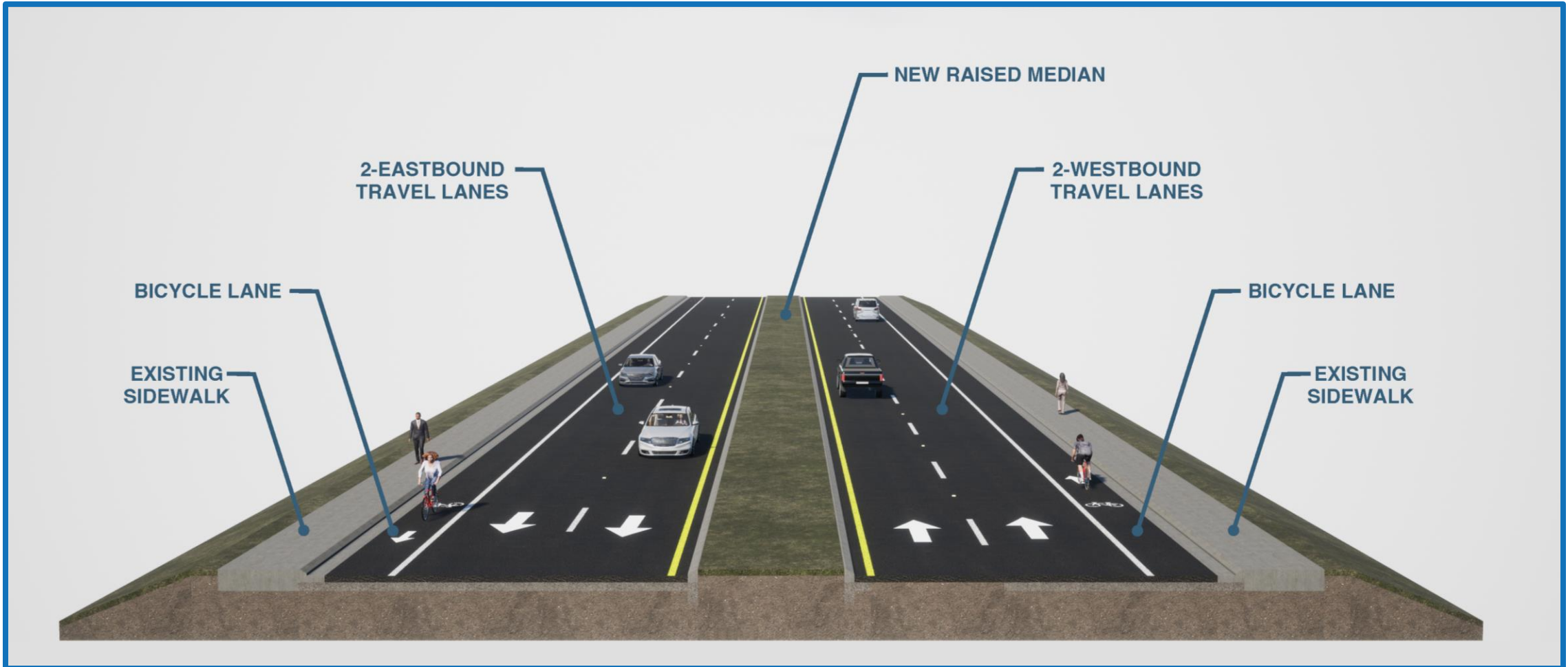
Existing Typical Section and Conditions along S.R. 776 (S. McCall Road)



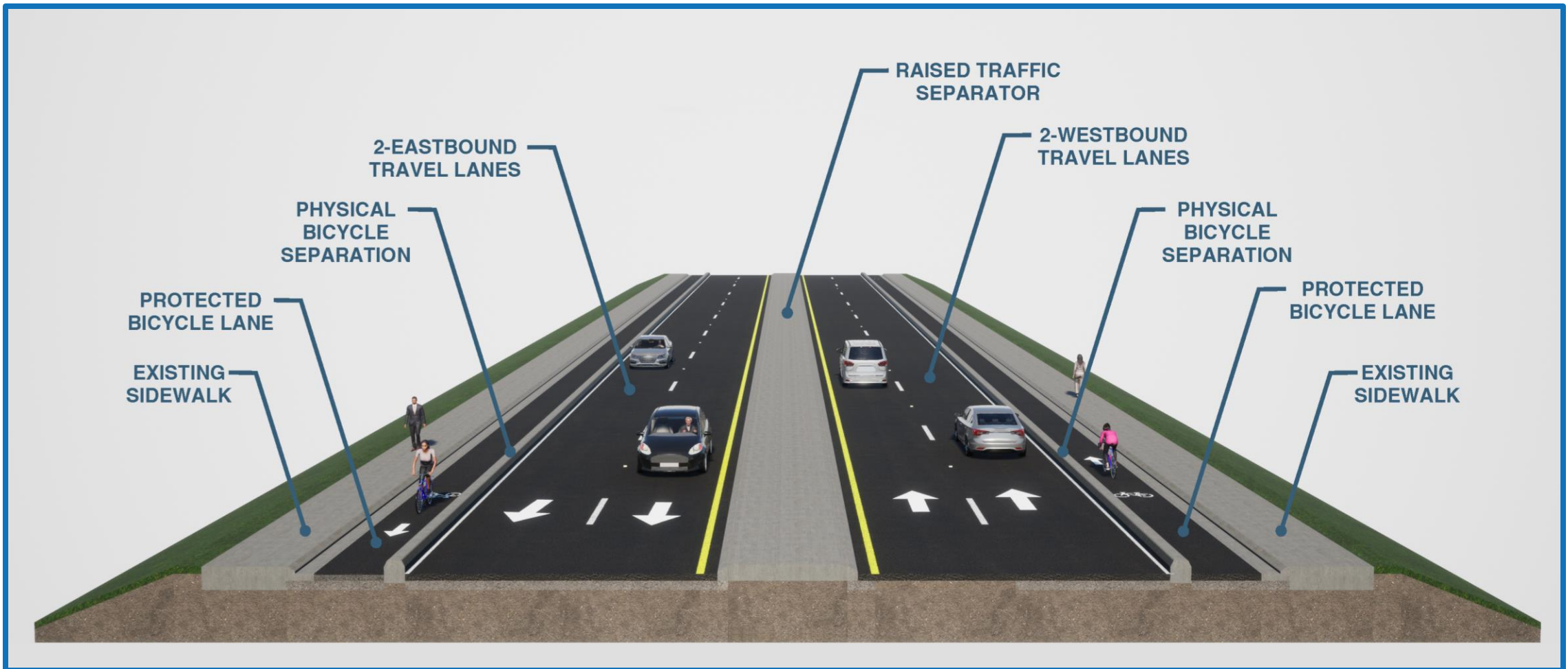
Existing Typical Section and Conditions along Bridge #010098 over Gottfried Creek



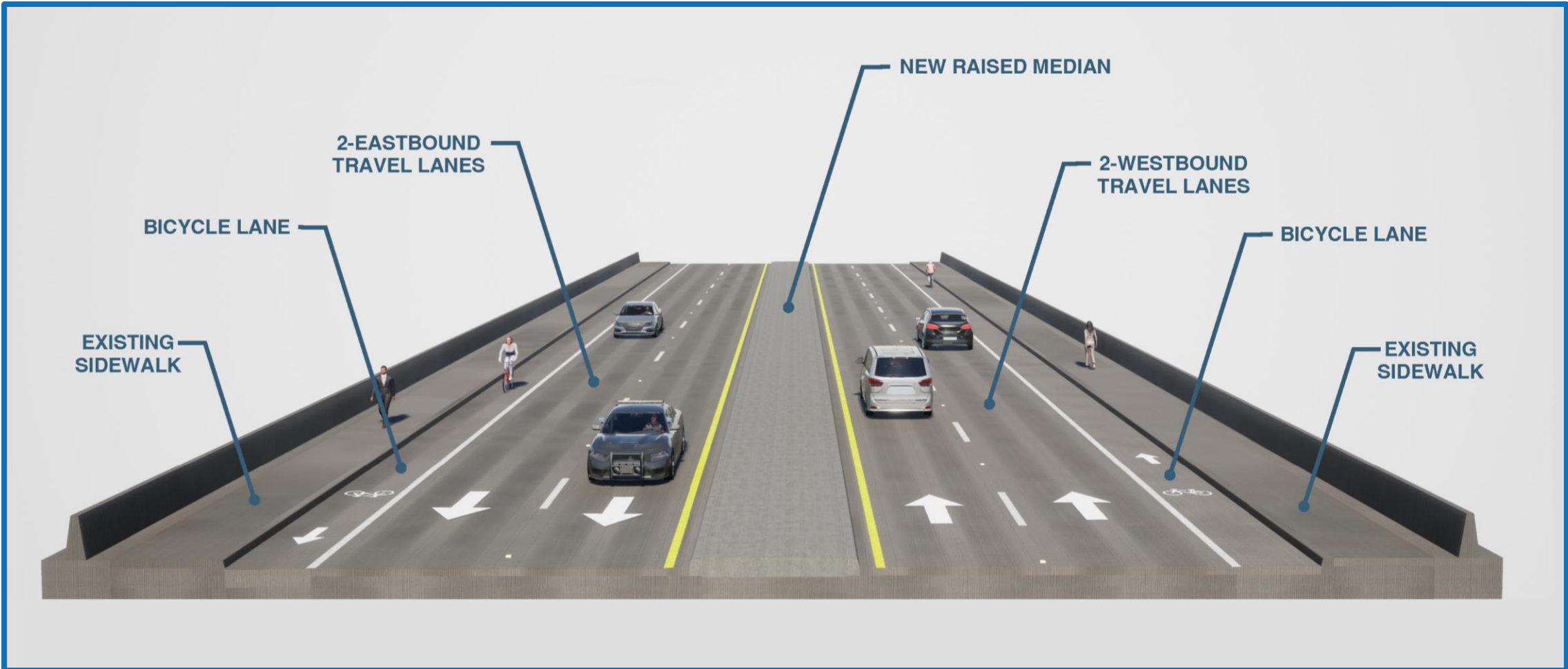
Proposed Typical Section from Merchants Crossing to Beach Road



Proposed Typical Section from Beach Road to Sarasota County Line



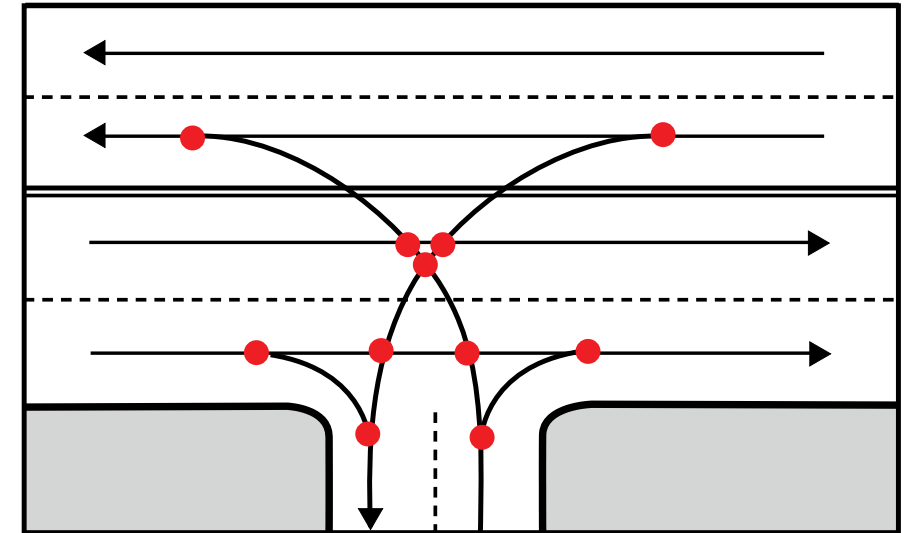
Proposed Typical Section along Existing Bridge #010098 over Gottfried Creek



Safe Mobility and Safe Access

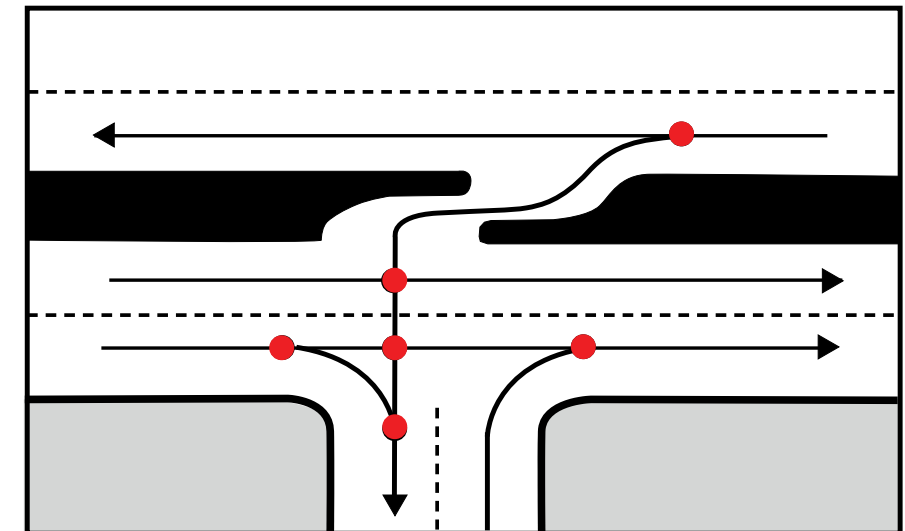
- *Two main functions of roadways: provide mobility and access*
- *Vehicles entering and existing roadway interrupt traffic flow and present conflicts*
- *Medians and directional median openings promote safer mobility and access to properties*

Before Access Management



More Conflicts Points

After Access Management



Fewer Conflicts Points

Conflict Points

- *Areas where paths legally cross on a roadway*
- *More conflict points result in more crashes*
- *Reducing the number of conflict points increases safety*

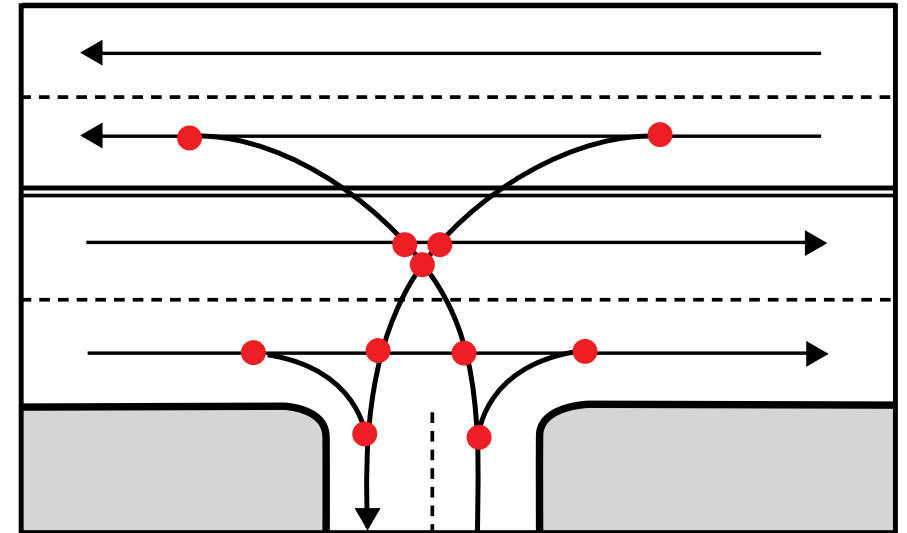
Replacing Two-Way Left Turn Lane
with Raised Median

45%

Reduction in crashes

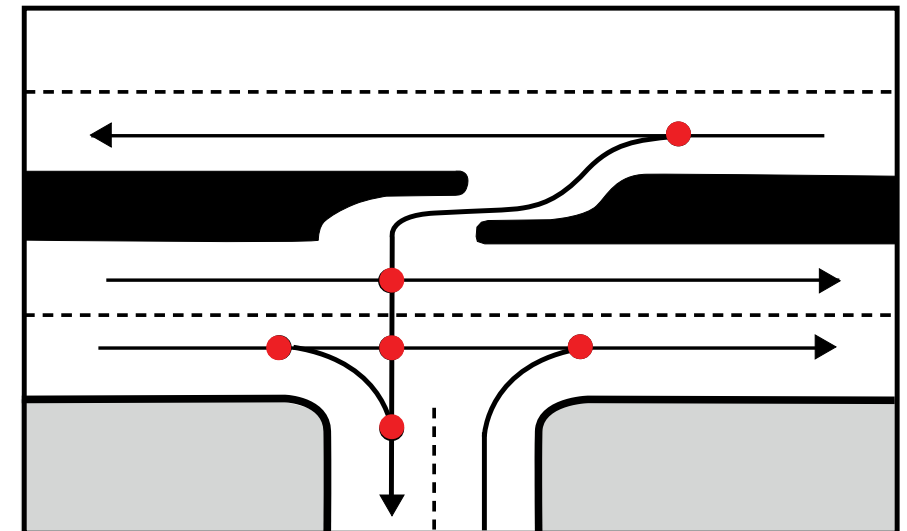
Source: 2019 FDOT Access Management Guidebook

Before Access Management



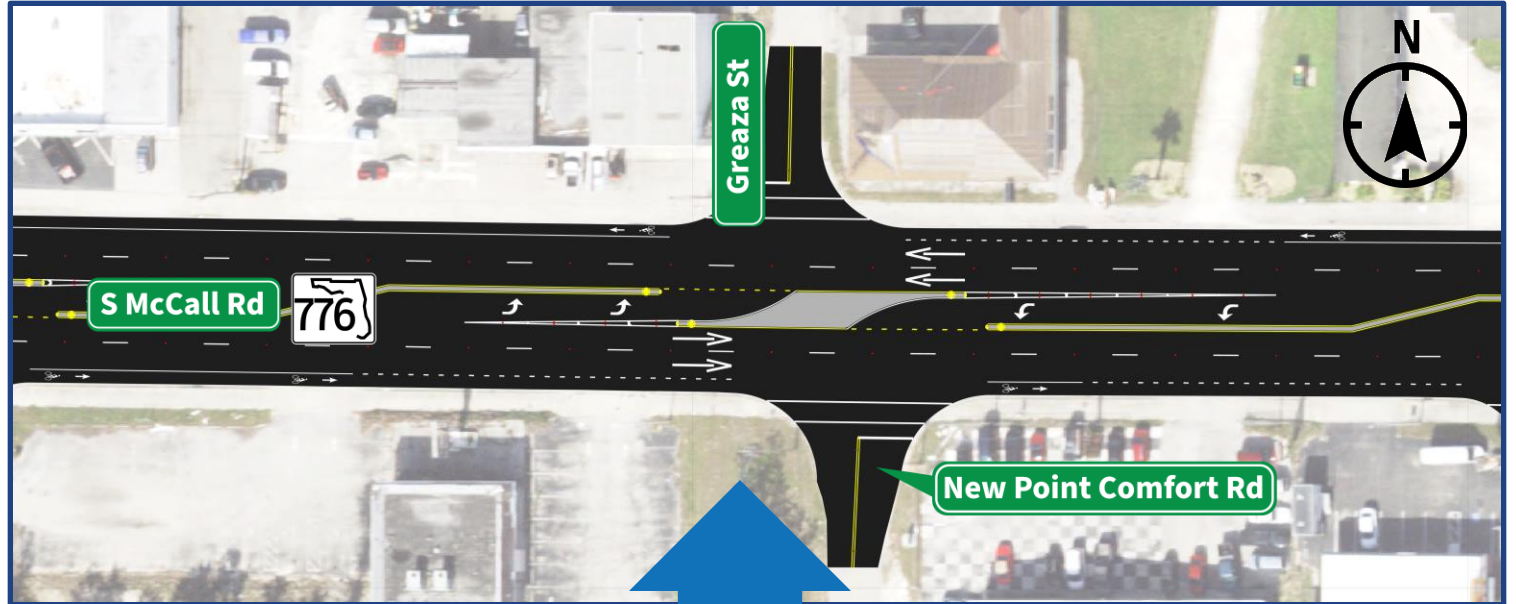
More Conflicts Points

After Access Management



Fewer Conflicts Points

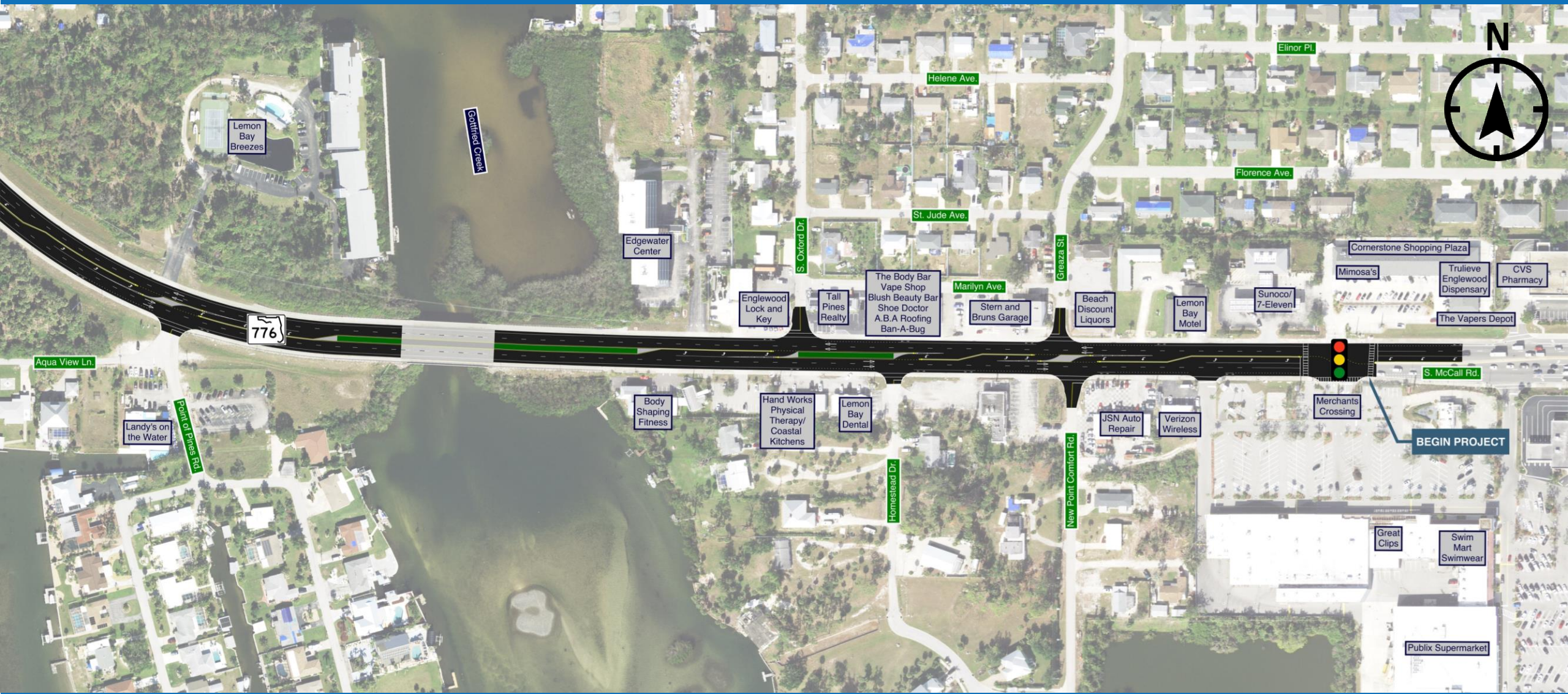
Existing Condition:
Drivers traveling in both directions have unlimited access



Proposed Condition:
Drivers have dedicated turning openings and are separated from opposing traffic in a directional median opening



Proposed Improvements





Proposed Improvements





Public Meeting

May 20, 2026



Design

Ongoing-
Completion
Late 2026

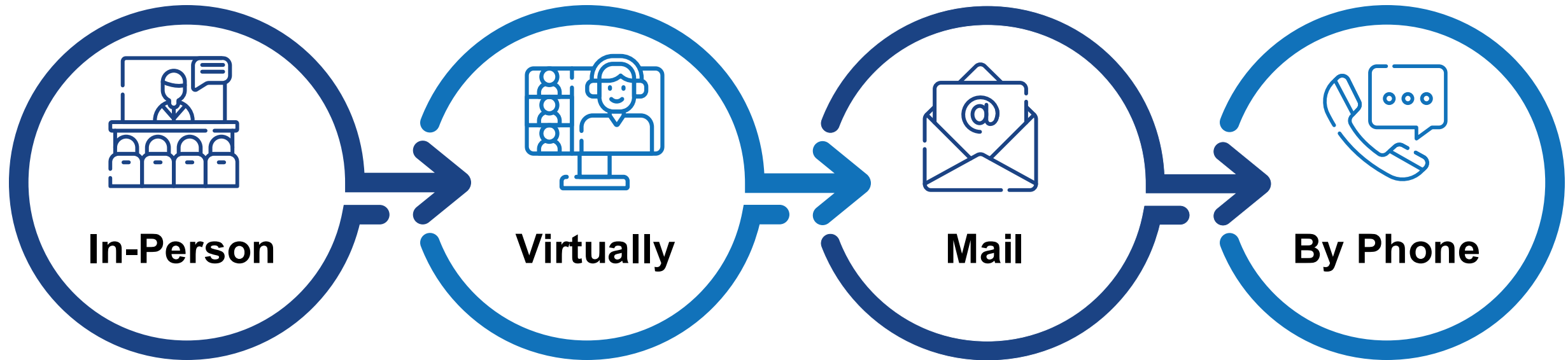


Construction

2027
\$2.46 M



Share Your Comments & Questions





Ways to Submit Comments & Questions

- In-person:
 - Submit Comment Form
- Virtually:
 - GoTo Webinar: Type the comment in the Questions box
 - Online at swfroads.com/project/449652-1
- Contact the FDOT Project Manager directly

FDOT
Project Manager
Contact Information

Ulises Valles
801 N. Broadway Avenue, Bartow, FL 33830
Ulises.Valles@dot.state.fl.us
863-519-2253



Thank You for Participating

Please submit comments and questions by June 1, 2026

Ulises.Valles@dot.state.fl.us



801 N. Broadway Avenue, Bartow, FL 33830



863-519-2253



swfroads.com/project/449652-1

The graphic for the Target Zero initiative. It features the word "TARGET" in a bold, black, sans-serif font at the top left. Below it, the word "ZERO" is written in a very large, bold, purple, sans-serif font. The letter "O" in "ZERO" is replaced by a target symbol with three concentric circles in shades of purple and blue. A purple silhouette of the state of Florida is overlaid on the target symbol. Below the word "ZERO" is the text "FATALITIES & SERIOUS INJURIES" in a bold, black, sans-serif font. The entire graphic is set against a background of a highway interchange with a bridge over a river.

What is Target Zero?

A **statewide initiative** to reduce the number of transportation-related serious injuries and deaths across Florida to **ZERO**.