

## Conflict Points

- *Areas where paths legally cross on a roadway*
- *More conflict points result in more crashes*
- *Reducing the number of conflict points increases safety*

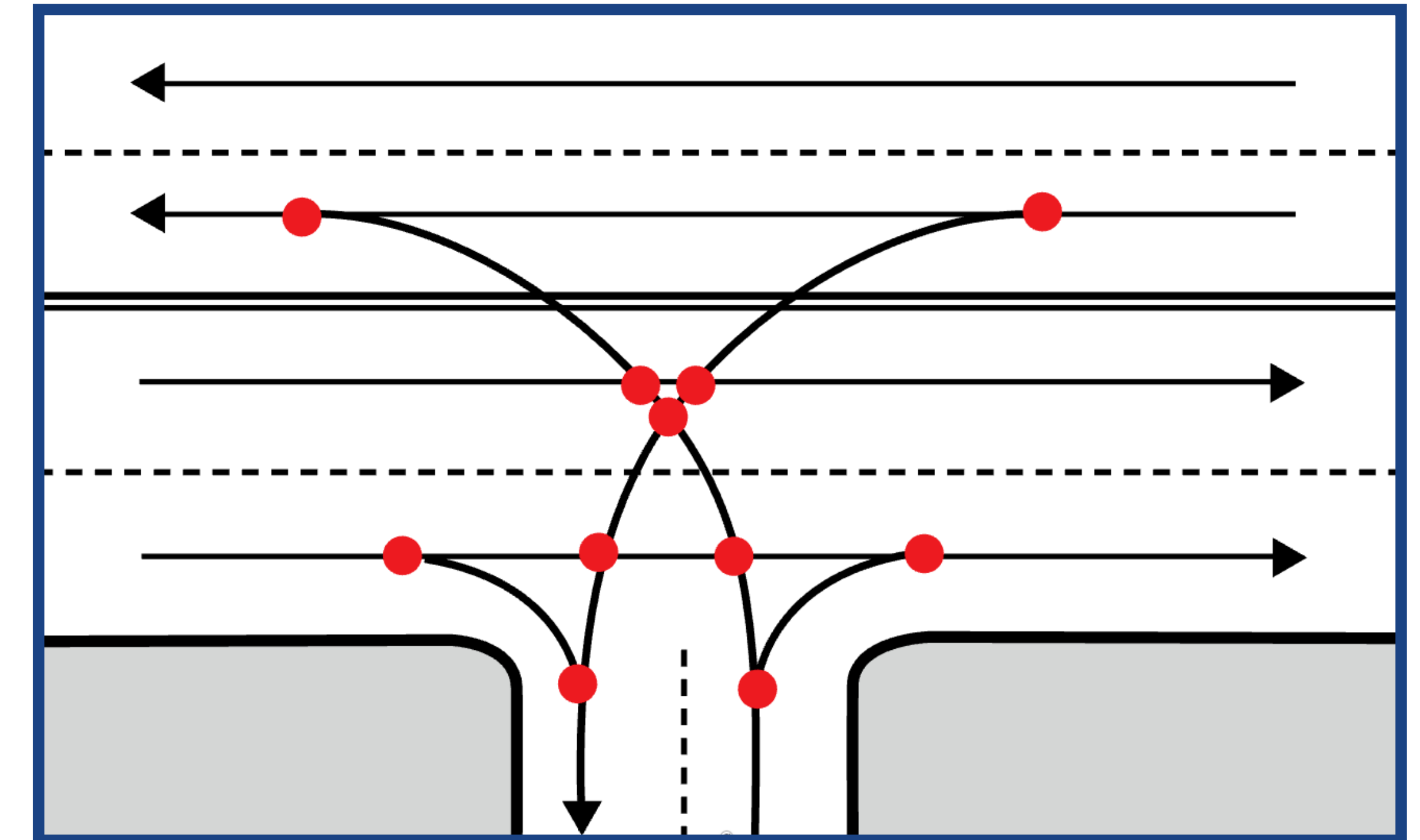
Replacing Two-Way Left Turn Lane with Raised Median

**45%**

Reduction in crashes

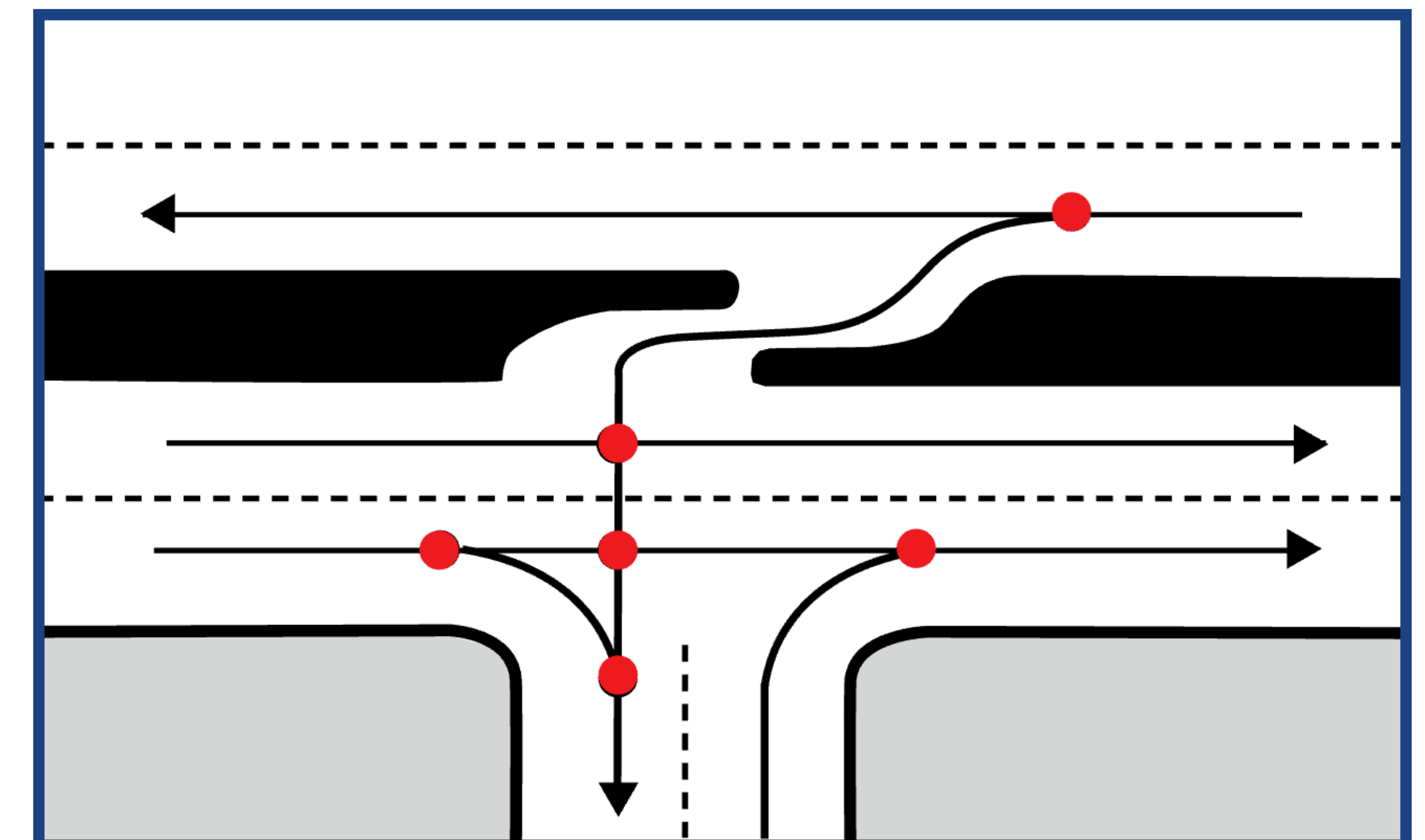
Source: 2019 FDOT Access Management Guidebook

Before Access Management



More Conflicts Points

After Access Management



Fewer Conflicts Points