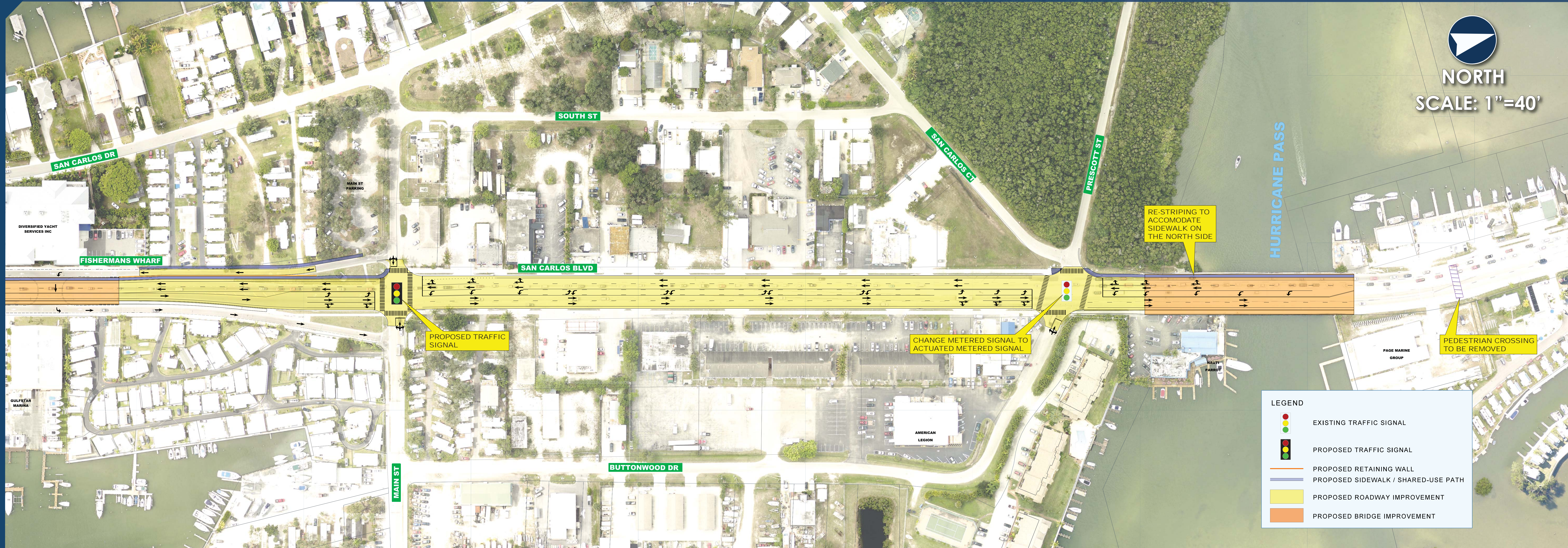


# SR 865 (San Carlos Blvd.) from South of Estero Blvd. to CR 869 (Summerlin Road)

# Operational Analysis Study



Island Alternative 2



**NORTH**  
SCALE: 1"=40'

LEGEND	
	EXISTING TRAFFIC SIGNAL
	PROPOSED TRAFFIC SIGNAL
	PROPOSED RETAINING WALL
	PROPOSED SIDEWALK / SHARED-USE PATH
	PROPOSED ROADWAY IMPROVEMENT
	PROPOSED BRIDGE IMPROVEMENT

Main Street Intersection to Hurricane Pass Bridge

Island Alternative 2