

MATCHLINE A

LEGEND

	REMOVE EXISTING CONCRETE
	MILLING LIMIT
	TRAFFIC SEPARATOR
	TURF SOD

**SECTION 12040 -- MP 2.671 to MP 3.695
SR 867 FROM CYPRESS LAKE DRIVE
TO EDINBURGH DRIVE
LEE COUNTY - FLORIDA**

REVISIONS			
DATE	DESCRIPTION	DATE	DESCRIPTION

Traffic Engineering Data Solutions, Inc.
80 Spring Vista Drive Phone: 386.753.0558
DeBary, FL 32713 Fax: 386.753.0778

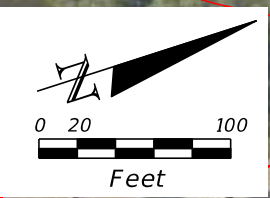
STATE OF FLORIDA DEPARTMENT OF TRANSPORTATION		
ROAD NO.	COUNTY	FINANCIAL PROJECT ID
867	LEE	

IMPROVEMENT DIAGRAM
SR 867 ACCESS MANAGEMENT STUDY
CYPRESS LAKE DRIVE TO EDINBURGH DRIVE
(MP 2.671 TO MP 3.695)

SHEET
NO.

16

SUSERS SDATES STIMES SFILES



LEGEND

	REMOVE EXISTING CONCRETE
	MILLING LIMIT
	TRAFFIC SEPARATOR
	TURF SOD

**SECTION 12040 -- MP 2.671 to MP 3.695
SR 867 FROM CYPRESS LAKE DRIVE
TO EDINBURGH DRIVE
LEE COUNTY - FLORIDA**

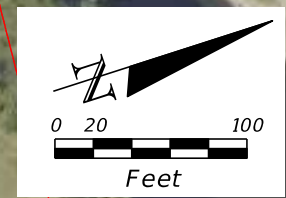
REVISIONS	
DATE	DESCRIPTION

Traffic Engineering Data Solutions, Inc.
80 Spring Vista Drive Phone: 386.753.0558
DeBary, FL 32713 Fax: 386.753.0778

STATE OF FLORIDA DEPARTMENT OF TRANSPORTATION		
ROAD NO.	COUNTY	FINANCIAL PROJECT ID
867	LEE	

IMPROVEMENT DIAGRAM
SR 867 ACCESS MANAGEMENT STUDY
CYPRESS LAKE DRIVE TO EDINBURGH DRIVE
(MP 2.671 TO MP 3.695)

SHEET NO.
17



LEGEND

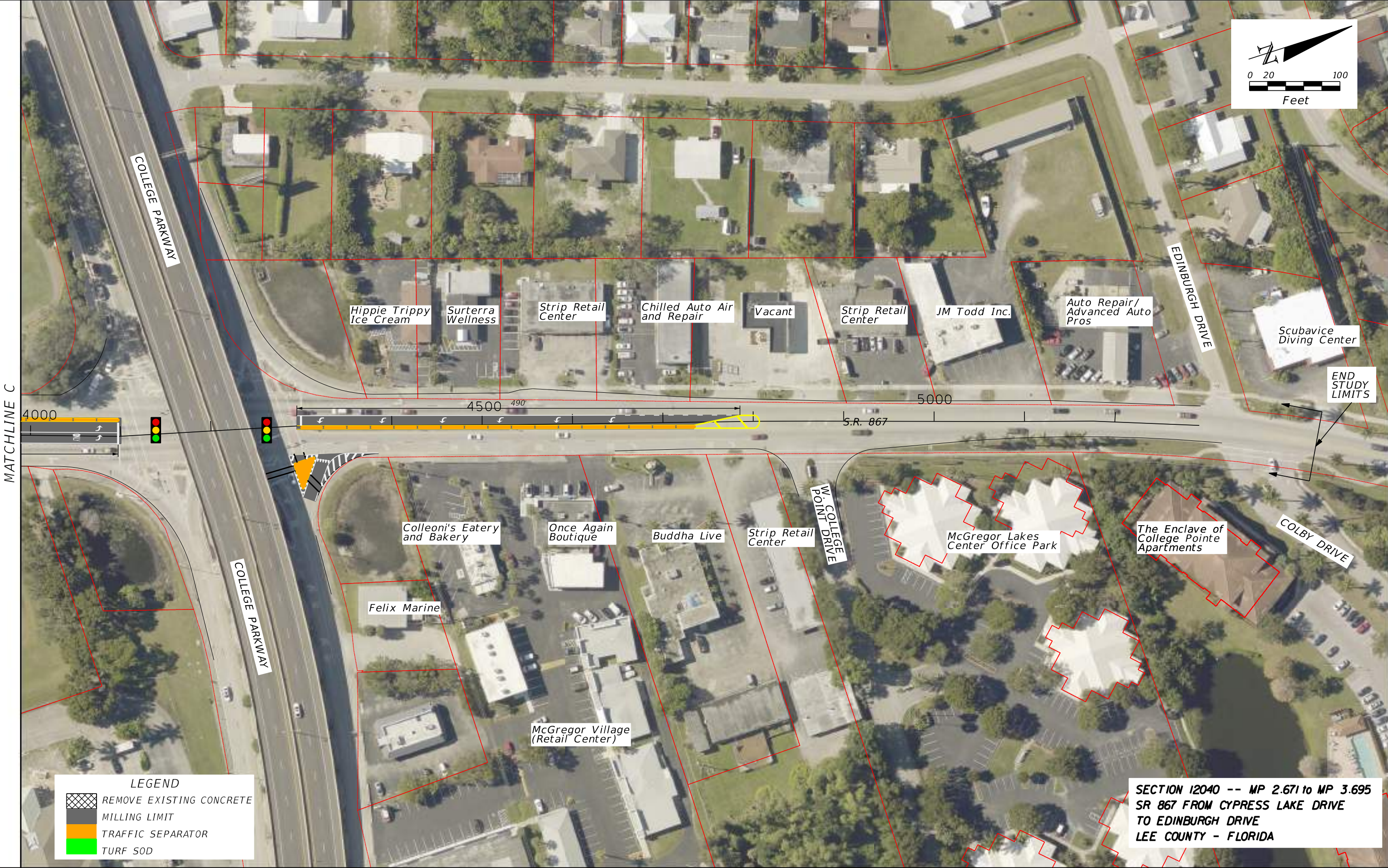
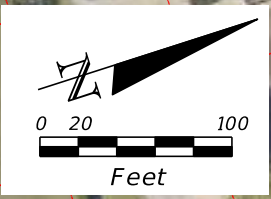
	REMOVE EXISTING CONCRETE
	MILLING LIMIT
	TRAFFIC SEPARATOR
	TURF SOD

**SECTION 12040 -- MP 2.671 to MP 3.695
SR 867 FROM CYPRESS LAKE DRIVE
TO EDINBURGH DRIVE
LEE COUNTY - FLORIDA**

REVISIONS				STATE OF FLORIDA DEPARTMENT OF TRANSPORTATION			IMPROVEMENT DIAGRAM SR 867 ACCESS MANAGEMENT STUDY CYPRESS LAKE DRIVE TO EDINBURGH DRIVE (MP 2.671 TO MP 3.695)	SHEET NO. 18
DATE	DESCRIPTION	DATE	DESCRIPTION	ROAD NO.	COUNTY	FINANCIAL PROJECT ID		
				867	LEE			

Traffic Engineering Data Solutions, Inc.
80 Spring Vista Drive Phone: 386.753.0558
DeBary, FL 32713 Fax: 386.753.0778

SUSERS SDATES STIMES SFILES



LEGEND

	REMOVE EXISTING CONCRETE
	MILLING LIMIT
	TRAFFIC SEPARATOR
	TURF SOD

**SECTION 12040 -- MP 2.671 to MP 3.695
SR 867 FROM CYPRESS LAKE DRIVE
TO EDINBURGH DRIVE
LEE COUNTY - FLORIDA**

REVISIONS	
DATE	DESCRIPTION

Traffic Engineering Data Solutions, Inc.
80 Spring Vista Drive Phone: 386.753.0558
DeBary, FL 32713 Fax: 386.753.0778

STATE OF FLORIDA DEPARTMENT OF TRANSPORTATION		
ROAD NO.	COUNTY	FINANCIAL PROJECT ID
867	LEE	

IMPROVEMENT DIAGRAM
SR 867 ACCESS MANAGEMENT STUDY
CYPRESS LAKE DRIVE TO EDINBURGH DRIVE
(MP 2.671 TO MP 3.695)

SHEET NO.
19