



FLORIDA DEPARTMENT OF TRANSPORTATION S.R. 29 FROM OKLAHOMA AVE TO PARK AVE

Financial Project ID: 453401-1

December 2025
Hendry County, FL

CONSTRUCTION PROJECT

The Florida Department of Transportation (FDOT) will perform drainage improvements, ditch reconstruction, pavement reconstruction and other incidental construction on State Road 29 from Oklahoma Avenue to Park Avenue. Construction is scheduled to begin in December 2025. The project limits cover approximately 0.520 miles (noting an original work length of 0.260 miles), and the estimated cost is \$733,320.40. Road closures, lane closures and traffic pattern changes may occur throughout construction.

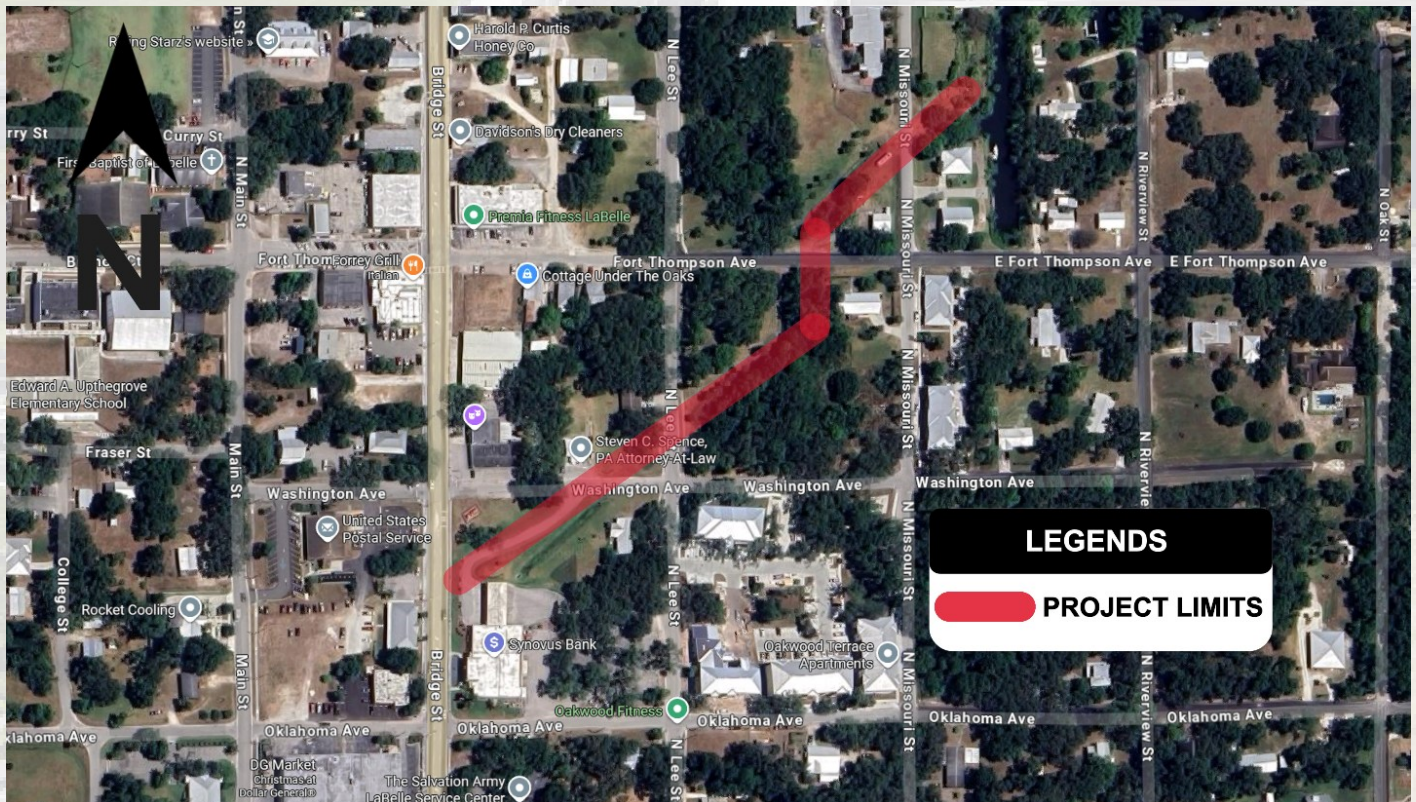
PROJECT IMPROVEMENTS

- Drainage improvements
- Ditch reconstruction
- Pavement reconstruction
- Other incidental construction

PROJECT SCHEDULE

- Construction begins early December 2025; estimated completion is Spring 2026
- Traffic will be reduced to one lane as needed
- Daytime and nighttime lane closures may occur
- Be aware of changing traffic patterns, heavy equipment, and workers during construction
- Detour information is provided on the back

Project Location Map



Aika Ranieri
Community Outreach Specialist
(863) 464-0743
Ai.Ranieri@dot.state.fl.us

CONTACT US

or

FOLLOW US

Janella Newsome
Director of Public Information
(863) 519-2828
Janella.Newsome@dot.state.fl.us

Detour Details

Phase 1: North Lee Street will close between Washington Avenue and Fort Thompson Avenue. Traffic will detour along Washington Avenue, State Road 29 (Bridge Street) and Fort Thompson Avenue. Pedestrians will be routed to nearby open sidewalks and marked crosswalks. Message boards will be posted 14 days before the closure.

Phase 2: Fort Thompson Avenue will close between North Missouri Street and North Lee Street. Drivers will follow a signed detour using North Missouri Street, Washington Avenue and State Road 29. Pedestrian access will be shifted to Washington Avenue.

Phase 3: Crews will complete ditch grading and remaining drainage work with minimal impacts. Short lane shifts or brief flagging operations may occur.

Local access will be maintained, and speed fines will double when workers are present.

Detour Map

