

S.R. 60 TEMPORARY RAILROAD CROSSING CLOSURE

Financial Project ID No.: 453830-1



JULY 2026



TRAFFIC ALERT

CLOSURE OVERVIEW

The Florida Department of Transportation (FDOT), in cooperation with CSX Transportation, will implement a temporary full closure of the rail grade crossing on S.R. 60 west of Lake Wales to perform vital track improvements, structural repaving, and high-visibility safety striping updates. Temporary detours will be required to accommodate these improvements (*see Detour Route descriptions below*). This maintenance ensures continued operational safety and network reliability.



CLOSURE START

Monday, July 27, 2026



ANTICIPATED REOPENING

Two Weeks (weather permitting)

DETOUR ROUTES

To minimize disruption, motorists are strongly advised to plan travel times in advance, follow all high-visibility dynamic road signs, and utilize the detour routes detailed below (*see Detour Maps on back*).

LOCAL AND SCHOOL BUS DETOUR – NO TRUCKS

Passenger Vehicles and School Bus Bypass Route (Trucks Strictly Prohibited)

Westbound (from Lake Wales to Bartow):

- ✓ Head north on Old Bartow Road
- ✓ At the roundabout, head west on Old Lake Wales Road
- ✓ Head west on S.R. 60

Eastbound (from Bartow to Lake Wales):

- ✓ Head north on Old Lake Wales Road
- ✓ At the roundabout, head south on Old Bartow Road
- ✓ Head east on S.R. 60

LARGE VEHICLE AND TRUCK DETOUR

Mandatory 31-Mile Regional Route for all Commercial Trucks and Heavy Vehicles

Westbound (from Lake Wales to Bartow):

- ✓ Head south on U.S. 27 to U.S. 98
- ✓ Head west on U.S. 98 to U.S. 17
- ✓ Head north on U.S. 17 to S.R. 60

Eastbound (from Bartow to Lake Wales):

- ✓ Head south on U.S. 17 to U.S. 98
- ✓ Head east on U.S. 98 to U.S. 27
- ✓ Head north on U.S. 27 to S.R. 60

CONTACT INFORMATION

If you have questions or comments regarding the project, please contact:



Janella Newsome, Director of Public Information



(863) 519-2828



Janella.Newsome@dot.state.fl.us



For more information about the project, please scan the QR code or visit www.swflroads.com/project/453830-1

To sign up for email updates, please send an email to sr60closure@fdotdetours.com.

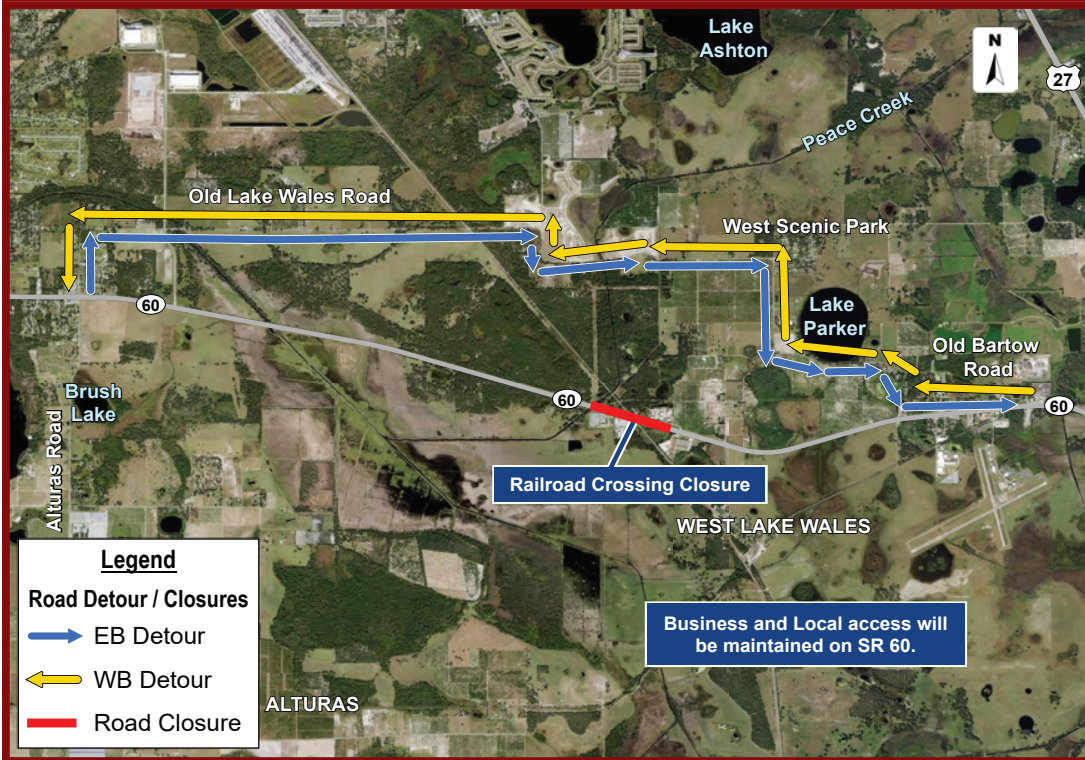
S.R. 60 TEMPORARY RAILROAD CROSSING CLOSURE

Financial Project ID No.: 453830-1

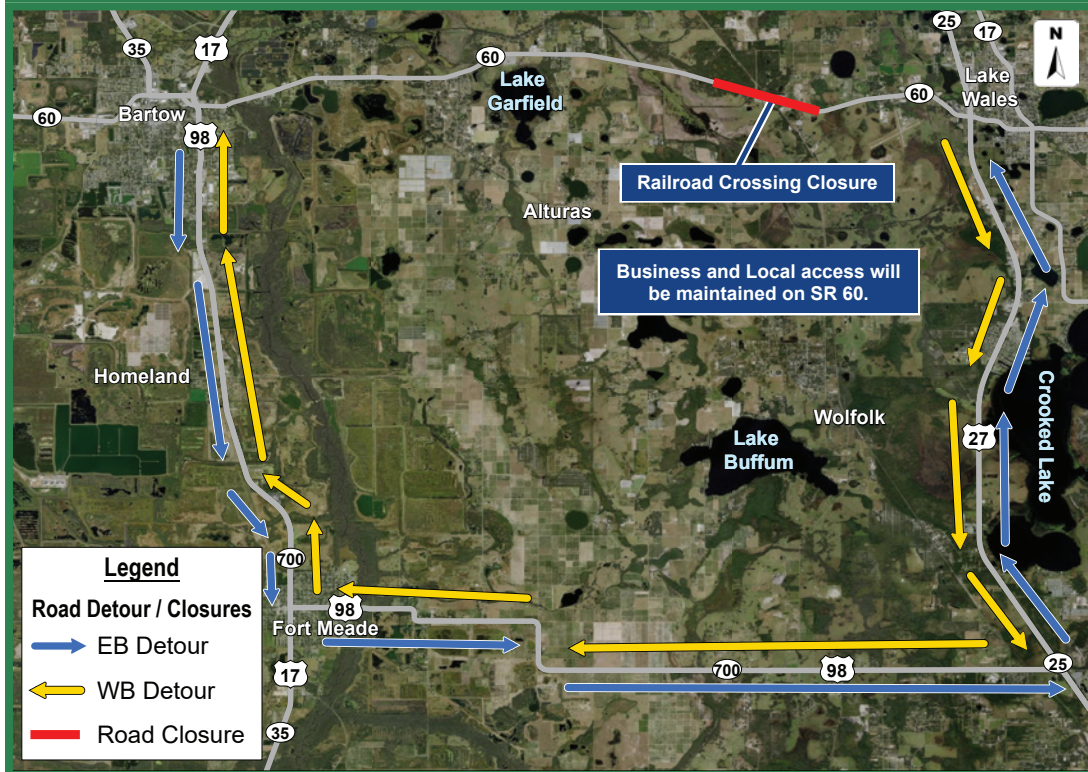


JULY 2026

LOCAL AND SCHOOL BUS DETOUR MAP – NO TRUCKS



LARGE VEHICLE AND TRUCK DETOUR MAP



SAFETY FIRST: DRIVE CAUTIOUSLY AND OBEY ALL POSTED TRAFFIC CONTROL DEVICES.