



Recommended Alternative Concept Plans

US 92 PD&E Study

from County Line Road to Wabash Avenue
Polk County

Financial Project ID: 433558-1-22-01

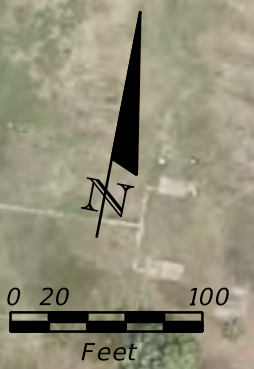
Federal Aid Project No.: TBD

ETDM No.: 3192



DISCLAIMER OF LIABILITY: The user of this information and data assumes all responsibility and risk for the use of both. Under no circumstances, including negligence, shall the Florida Department of Transportation, its employees, or consultants be liable for any DIRECT, INDIRECT, INCIDENTAL, SPECIAL, EXEMPLARY, or CONSEQUENTIAL DAMAGES, or LOST PROFITS that result from the use, misuse or inability to use the application and data. Nor shall the Florida Department of Transportation, its employees or consultants be liable for any damages resulting from or related to reliance, mistakes, omissions, interruptions, deletions of files, computer viruses, errors, omissions, or any failure of performance, communications failure, their, destruction or unauthorized access to the application and data.

NO WARRANTIES: The information provided is made available by the Florida Department of Transportation on an "as is," "as available" basis without warranties of any kind, express or implied. This information cannot be identified as data, documentation, images, or otherwise and has been approved by the Florida Department of Transportation for any use whatsoever.



AIM ENGINEERING & SURVEYING, INC.
 3802 CORPOREX PARK DRIVE, SUITE 225
 TAMPA, FLORIDA 33619
 TEL: (813) 627-4144
 FAX: (813) 664-1899 WWW.AIMENGR.COM

In Association with:
 Adams Traffic, Inc.
 Archaeological Consultants, Inc.
 HDR Engineering, Inc.
 I.F. Rooks and Associates, Inc.
 Inwood Consulting Engineers, Inc.
 Kisinger Campo & Associates, Corp.
 Tierra, Inc.

- 110 BASELINE & STATIONS
- EXISTING R.O.W.
- EXISTING L.A. R.O.W.
- PROPERTY LINE
- AERIALS FLOWN 3/28/2014

- PROPOSED R.O.W.
- PROPOSED PAVEMENT
- PROPOSED SIDEWALK
- TRAFFIC SIGNAL
- MODELED NOISE BARRIER
- NOISE RECEPTOR

- B BUSINESS RELOCATION
- R RESIDENTIAL RELOCATION
- XXXXX SURFACE WATERS
- XXXXX WETLANDS
- 10 POTENTIAL MEDIUM & HIGH CONTAMINATION



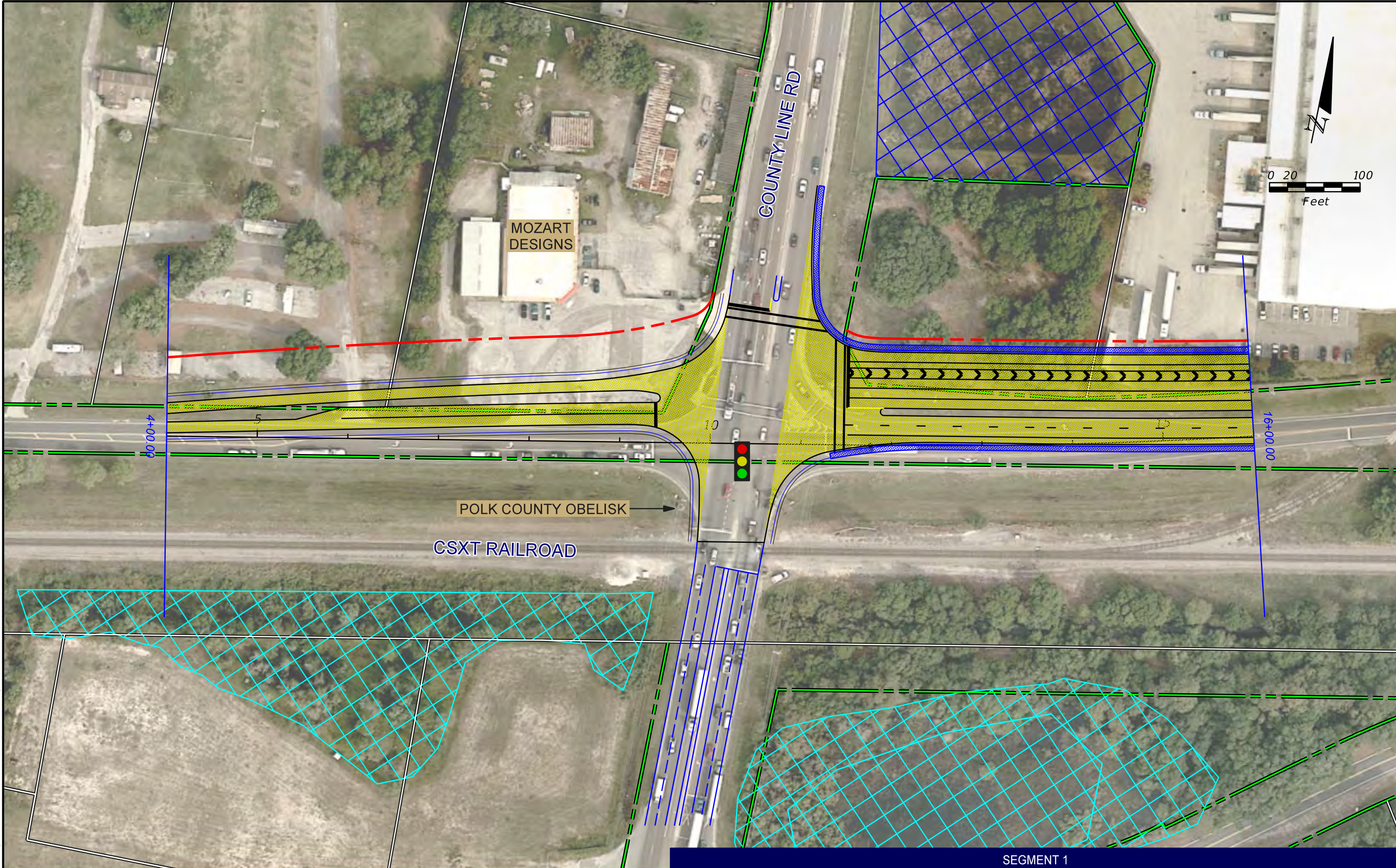
US 92 PD&E STUDY
FROM COUNTY LINE RD TO WABASH AVE
 FINANCIAL PROJECT ID: 433558-1-22-01 COUNTY: POLK



RECOMMENDED ALTERNATIVE
 SHEET: 1

DISCLAIMER OF LIABILITY: The user of this information and data assumes all responsibility and risk for the use of both. Under no circumstances, including negligence, shall the Florida Department of Transportation, its employees, or consultants be liable for any DIRECT, INDIRECT, INCIDENTAL, SPECIAL, EXEMPLARY or CONSEQUENTIAL DAMAGES, or LOST PROFITS that result from the use, misuse or inability to use the application and data. Nor shall the Florida Department of Transportation, its employees or consultants be liable for any damages resulting from or related to reliance, mistakes, omissions, interruptions, deletion of files, computer viruses, errors, delays, or any failure of performance, communications failure, their, destruction or unauthorized access to the application and data.

NO WARRANTIES: The information provided is made available by the Florida Department of Transportation on an "as is," "as available" basis without warranties of any kind, express or implied. This information cannot be identified as data, documentation, images, or otherwise and has been approved by the Florida Department of Transportation for any use whatsoever.



AIM ENGINEERING & SURVEYING, INC.
 3802 CORPOREX PARK DRIVE, SUITE 225
 TAMPA, FLORIDA 33619
 TEL: (813) 627-4144
 FAX: (813) 664-1899 WWW.AIMENGR.COM

In Association with:
 Adams Traffic, Inc.
 Archaeological Consultants, Inc.
 HDR Engineering, Inc.
 I.F. Rooks and Associates, Inc.
 Inwood Consulting Engineers, Inc.
 Klisinger Campo & Associates, Corp.
 Tierra, Inc.

- 110 ——— BASELINE & STATIONS
- EXISTING R.O.W.
- EXISTING L.A. R.O.W.
- PROPERTY LINE
- AERIALS FLOWN 3/28/2014

- PROPOSED R.O.W.
- PROPOSED PAVEMENT
- PROPOSED SIDEWALK
- TRAFFIC SIGNAL
- MODELED NOISE BARRIER
- NOISE RECEPTOR

- Ⓟ BUSINESS RELOCATION
- Ⓡ RESIDENTIAL RELOCATION
- Ⓧ SURFACE WATERS
- Ⓧ WETLANDS
- ⚠ POTENTIAL MEDIUM & HIGH CONTAMINATION



US 92 PD&E STUDY
FROM COUNTY LINE RD TO WABASH AVE
 FINANCIAL PROJECT ID: 433558-1-22-01 COUNTY: POLK



RECOMMENDED ALTERNATIVE
 SHEET: 2

DISCLAIMER OF LIABILITY: The user of this information and data assumes all responsibility and risk for the use of both. Under no circumstances, including negligence, shall the Florida Department of Transportation, its employees, or consultants be liable for any DIRECT, INDIRECT, INCIDENTAL, SPECIAL, EXEMPLARY or CONSEQUENTIAL DAMAGES, or LOST PROFITS that result from the use, misuse or inability to use the application and data. Nor shall the Florida Department of Transportation, its employees, or consultants be liable for any damages resulting from or related to reliance, mistakes, omissions, interruptions, deletion of files, computer viruses, errors, delays, or any failure of performance, communications failure, their, destruction or unauthorized access to the application and data.

NO WARRANTIES: The information provided is made available by the Florida Department of Transportation on an "as is," "as available" basis without warranties of any kind, express or implied. This information cannot be identified as data, documentation, images, or otherwise and has been approved by the Florida Department of Transportation for any use whatsoever.



SEGMENT 1

AIM ENGINEERING & SURVEYING, INC.
 3802 CORPOREX PARK DRIVE, SUITE 225
 TAMPA, FLORIDA 33619
 TEL: (813) 627-4144
 FAX: (813) 664-1899 WWW.AIMENGR.COM

In Association with:
 Adams Traffic, Inc.
 Archaeological Consultants, Inc.
 HDR Engineering, Inc.
 I.F. Rooks and Associates, Inc.
 Inwood Consulting Engineers, Inc.
 Kisinger Campo & Associates, Corp.
 Tierra, Inc.

- 110 BASELINE & STATIONS
- EXISTING R.O.W.
- EXISTING L.A. R.O.W.
- PROPERTY LINE
- AERIALS FLOWN 3/28/2014

- PROPOSED R.O.W.
- PROPOSED PAVEMENT
- PROPOSED SIDEWALK
- TRAFFIC SIGNAL
- MODELED NOISE BARRIER
- NOISE RECEPTOR

- Ⓟ BUSINESS RELOCATION
- Ⓟ RESIDENTIAL RELOCATION
- Ⓟ SURFACE WATERS
- Ⓟ WETLANDS
- Ⓟ POTENTIAL MEDIUM & HIGH CONTAMINATION



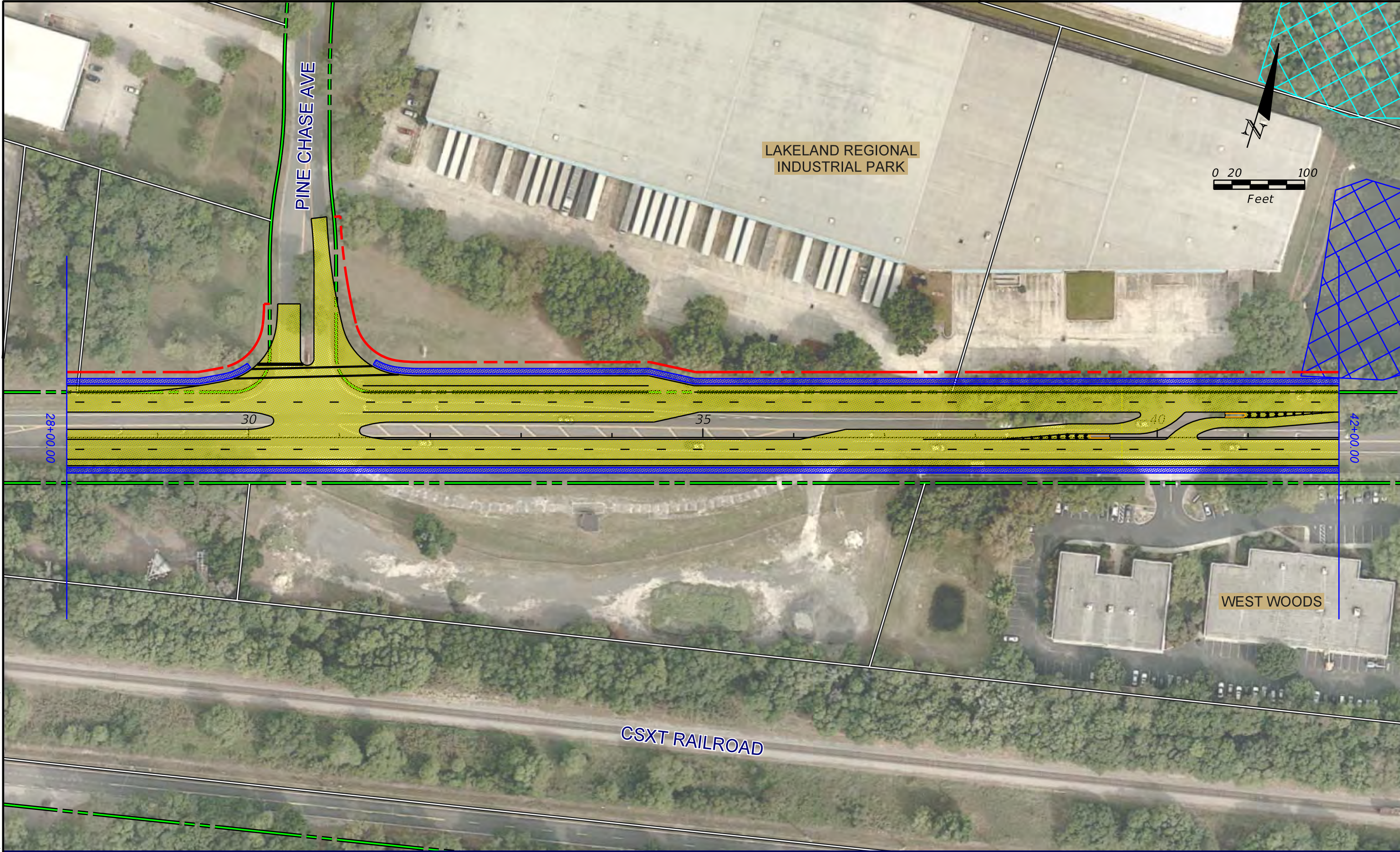
US 92 PD&E STUDY
FROM COUNTY LINE RD TO WABASH AVE
 FINANCIAL PROJECT ID: 433558-1-22-01 COUNTY: POLK



RECOMMENDED ALTERNATIVE
 SHEET: 3

DISCLAIMER OF LIABILITY: The user of this information and data assumes all responsibility and risk for the use of both. Under no circumstances, including negligence, shall the Florida Department of Transportation, its employees, or consultants be liable for any DIRECT, INDIRECT, INCIDENTAL, SPECIAL, EXEMPLARY, or CONSEQUENTIAL DAMAGES, or LOST PROFITS that result from the use, misuse or inability to use the application and data. Nor shall the Florida Department of Transportation, its employees, or consultants be liable for any damages resulting from or related to reliance, mistakes, omissions, interruptions, deletions of files, computer viruses, errors, or any failure of performance, communications failure, their, destruction or unauthorized access to the application and data.

NO WARRANTIES: The information provided is made available by the Florida Department of Transportation on an "as is" basis without warranties of any kind, express or implied. This information cannot be identified as data, documentation, images, or otherwise and has been approved by the Florida Department of Transportation for any use whatsoever.



SEGMENT 1

AIM ENGINEERING & SURVEYING, INC.
 3802 CORPOREX PARK DRIVE, SUITE 225
 TAMPA, FLORIDA 33619
 TEL: (813) 627-4144
 FAX: (813) 664-1899 WWW.AIMENGR.COM

In Association with:
 Adams Traffic, Inc.
 Archaeological Consultants, Inc.
 HDR Engineering, Inc.
 I.F. Rooks and Associates, Inc.
 Inwood Consulting Engineers, Inc.
 Klisinger Campo & Associates, Corp.
 Tierra, Inc.

- 110 BASELINE & STATIONS
- EXISTING R.O.W.
- EXISTING L.A. R.O.W.
- PROPERTY LINE
- AERIALS FLOWN 3/28/2014

- PROPOSED R.O.W.
- PROPOSED PAVEMENT
- PROPOSED SIDEWALK
- TRAFFIC SIGNAL
- MODELED NOISE BARRIER
- NOISE RECEPTOR

- B BUSINESS RELOCATION
- R RESIDENTIAL RELOCATION
- SURFACE WATERS
- WETLANDS
- POTENTIAL MEDIUM & HIGH CONTAMINATION



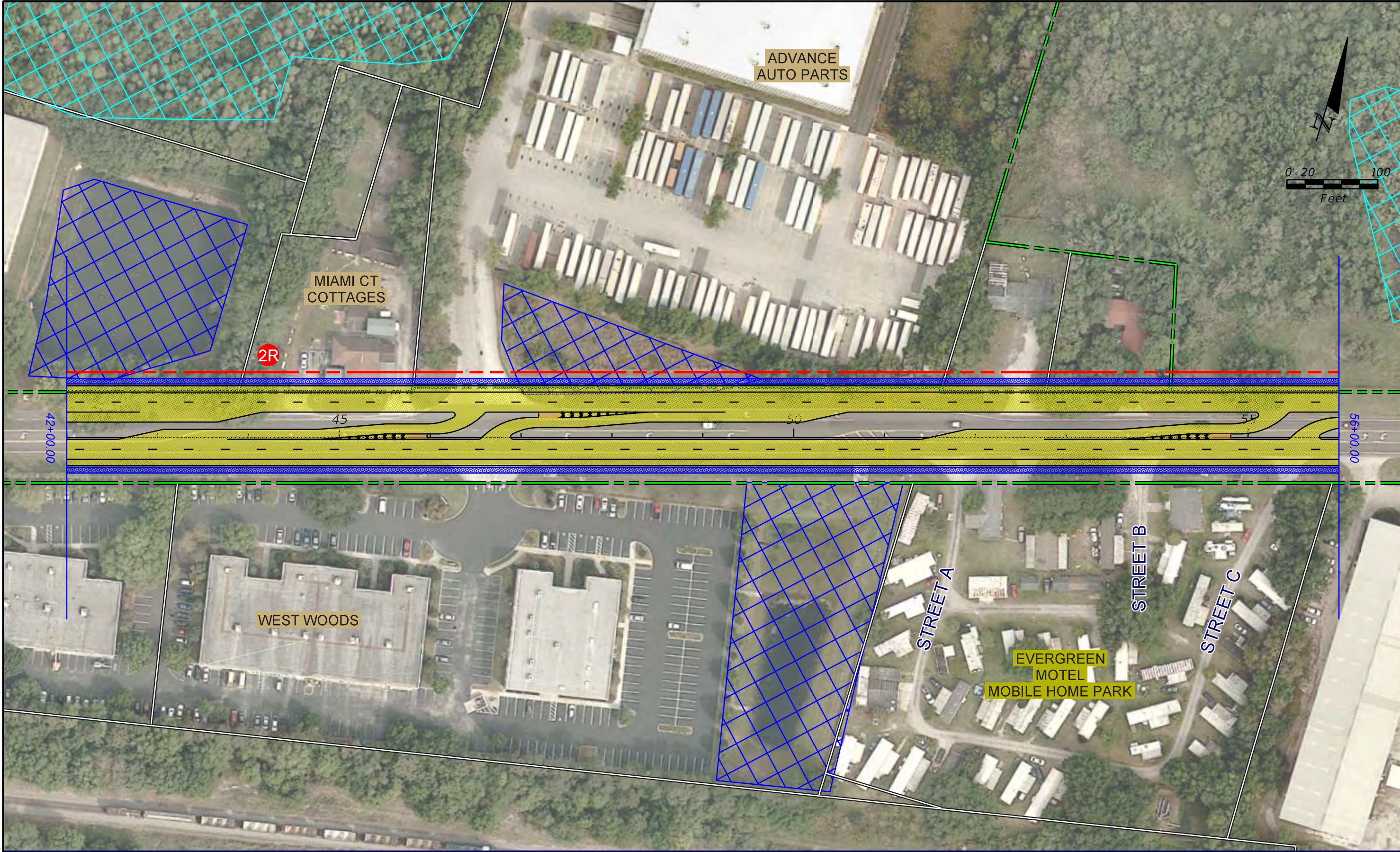
US 92 PD&E STUDY
FROM COUNTY LINE RD TO WABASH AVE
 FINANCIAL PROJECT ID: 433558-1-22-01 COUNTY: POLK



RECOMMENDED ALTERNATIVE
 SHEET: 4

DISCLAIMER OF LIABILITY: The user of this information and data assumes all responsibility and risk for the use of both. Under no circumstances, including negligence, shall the Florida Department of Transportation, its employees, or consultants be liable for any DIRECT, INDIRECT, INCIDENTAL, SPECIAL, EXEMPLARY or CONSEQUENTIAL DAMAGES, or LOST PROFITS that result from the use, misuse or inability to use the application and data. Nor shall the Florida Department of Transportation, its employees or consultants be liable for any damages resulting from or related to reliance, mistakes, omissions, interruptions, deletion of files, computer viruses, errors, delays or any failure of performance, communications failure, their, destruction or unauthorized access to the application and data.

NO WARRANTIES: The information provided is made available by the Florida Department of Transportation on an "as is," "as available" basis without warranties of any kind, express or implied. This information cannot be identified as data, documentation, images, or otherwise. It has been approved by the Florida Department of Transportation for any use whatsoever.



SEGMENT 1

AIM ENGINEERING & SURVEYING, INC.
 3802 CORPOREX PARK DRIVE, SUITE 225
 TAMPA, FLORIDA 33619
 TEL: (813) 627-4144
 FAX: (813) 664-1899 WWW.AIMENGR.COM

In Association with:
 Adams Traffic, Inc.
 Archaeological Consultants, Inc.
 HDR Engineering, Inc.
 I.F. Rooks and Associates, Inc.
 Inwood Consulting Engineers, Inc.
 Kisinger Campo & Associates, Corp.
 Tierra, Inc.

- 110 BASELINE & STATIONS
- EXISTING R.O.W.
- EXISTING L.A. R.O.W.
- PROPERTY LINE
- AERIALS FLOWN 3/28/2014

- PROPOSED R.O.W.
- PROPOSED PAVEMENT
- PROPOSED SIDEWALK
- TRAFFIC SIGNAL
- MODELED NOISE BARRIER
- NOISE RECEPTOR

- B BUSINESS RELOCATION
- R RESIDENTIAL RELOCATION
- SURFACE WATERS
- WETLANDS
- POTENTIAL MEDIUM & HIGH CONTAMINATION



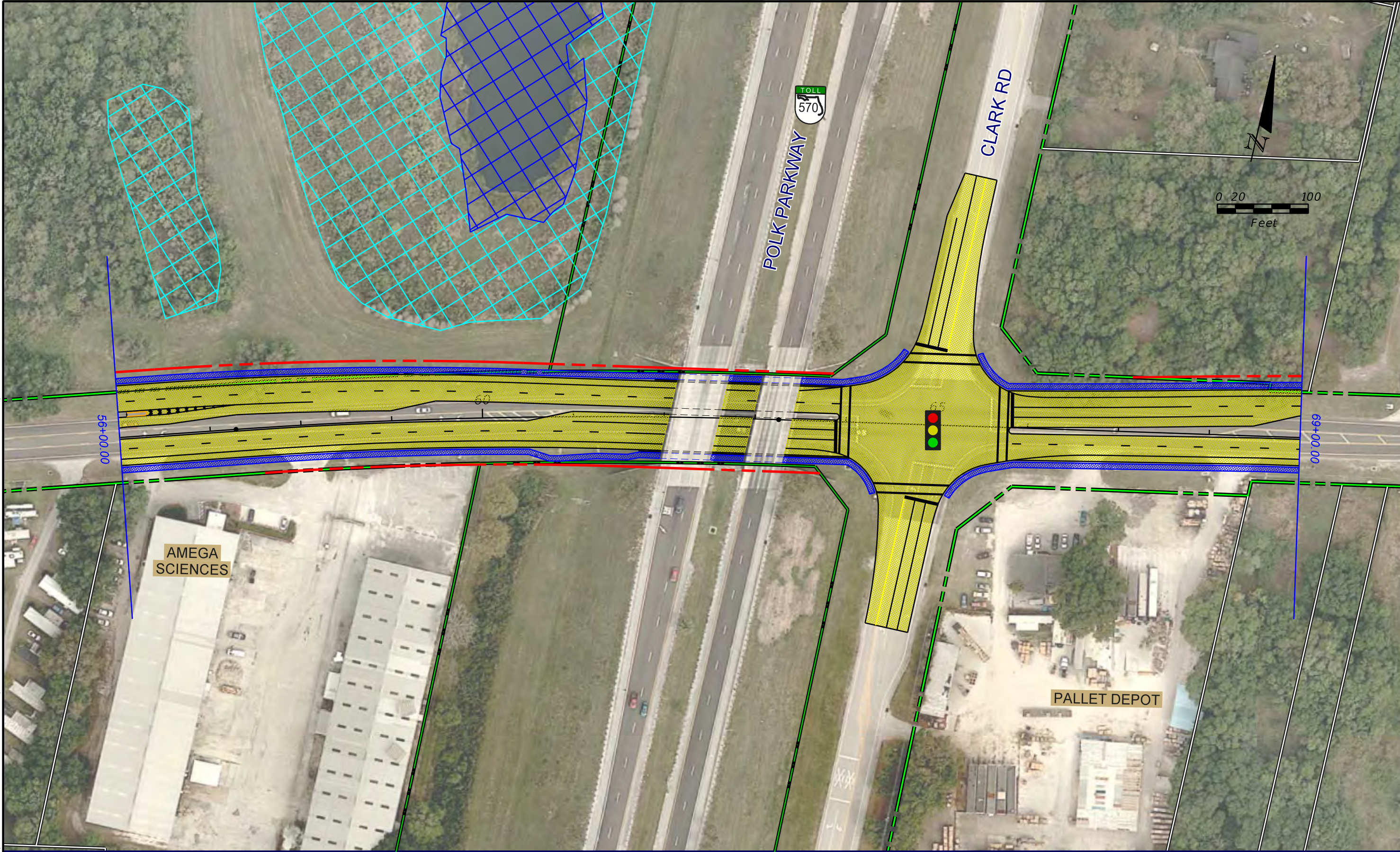
US 92 PD&E STUDY
FROM COUNTY LINE RD TO WABASH AVE
 FINANCIAL PROJECT ID: 433558-1-22-01 COUNTY: POLK



RECOMMENDED ALTERNATIVE
 SHEET: 5

DISCLAIMER OF LIABILITY: The user of this information and data assumes all responsibility and risk for the use of both. Under no circumstances, including negligence, shall the Florida Department of Transportation, its employees, or consultants be liable for any DIRECT, INDIRECT, INCIDENTAL, SPECIAL, EXEMPLARY or CONSEQUENTIAL DAMAGES, or LOST PROFITS that result from the use, misuse or inability to use the application and data. Nor shall the Florida Department of Transportation, its employees or consultants be liable for any damages resulting from or related to reliance, mistakes, omissions, interruptions, deletion of files, computer viruses, errors, delays, or any failure of performance, communications failure, their, destruction or unauthorized access to the application and data.

NO WARRANTIES: The information provided is made available by the Florida Department of Transportation on an "as is" basis, as available, without warranties of any kind, express or implied. This information cannot be identified as data, documentation, images, or otherwise and has been approved by the Florida Department of Transportation for any use whatsoever.



SEGMENT 1

AIM ENGINEERING & SURVEYING, INC.
 3802 CORPOREX PARK DRIVE, SUITE 225
 TAMPA, FLORIDA 33619
 TEL: (813) 627-4144
 FAX: (813) 664-1899 WWW.AIMENGR.COM

In Association with:
 Adams Traffic, Inc.
 Archaeological Consultants, Inc.
 HDR Engineering, Inc.
 I.F. Rooks and Associates, Inc.
 Inwood Consulting Engineers, Inc.
 Kisinger Campo & Associates, Corp.
 Tierra, Inc.

- 110 BASELINE & STATIONS
- EXISTING R.O.W.
- EXISTING L.A. R.O.W.
- PROPERTY LINE
- AERIALS FLOWN 3/28/2014

- PROPOSED R.O.W.
- PROPOSED PAVEMENT
- PROPOSED SIDEWALK
- TRAFFIC SIGNAL
- MODELED NOISE BARRIER
- NOISE RECEPTOR

- B BUSINESS RELOCATION
- R RESIDENTIAL RELOCATION
- SURFACE WATERS
- WETLANDS
- POTENTIAL MEDIUM & HIGH CONTAMINATION



US 92 PD&E STUDY
FROM COUNTY LINE RD TO WABASH AVE
 FINANCIAL PROJECT ID: 433558-1-22-01 COUNTY: POLK



RECOMMENDED ALTERNATIVE
 SHEET: 6

DISCLAIMER OF LIABILITY: The user of this information and data assumes all responsibility and risk for the use of both. Under no circumstances, including negligence, shall the Florida Department of Transportation, its employees, or consultants be liable for any DIRECT, INDIRECT, INCIDENTAL, SPECIAL, EXEMPLARY or CONSEQUENTIAL DAMAGES, or LOST PROFITS that result from the use, misuse or inability to use the application and data. Nor shall the Florida Department of Transportation, its employees or consultants be liable for any damages resulting from or related to reliance, mistakes, omissions, interruptions, deletion of files, computer viruses, errors, delays or any failure of performance, communications failure, their, destruction or unauthorized access to the application and data.

NO WARRANTIES: The information provided is made available by the Florida Department of Transportation on an "as is," "as available" basis without warranties of any kind, express or implied. This information cannot be identified as data, documentation, images, or otherwise and has been approved by the Florida Department of Transportation for any use whatsoever.



SEGMENT 1

AIM ENGINEERING & SURVEYING, INC.
 3802 CORPOREX PARK DRIVE, SUITE 225
 TAMPA, FLORIDA 33619
 TEL: (813) 627-4144
 FAX: (813) 664-1899 WWW.AIMENGR.COM

In Association with:
 Adams Traffic, Inc.
 Archaeological Consultants, Inc.
 HDR Engineering, Inc.
 I.F. Rooks and Associates, Inc.
 Inwood Consulting Engineers, Inc.
 Kisinger Campo & Associates, Corp.
 Tierra, Inc.

- 110 BASELINE & STATIONS
- EXISTING R.O.W.
- EXISTING L.A. R.O.W.
- PROPERTY LINE
- AERIALS FLOWN 3/28/2014

- PROPOSED R.O.W.
- PROPOSED PAVEMENT
- PROPOSED SIDEWALK
- TRAFFIC SIGNAL
- MODELED NOISE BARRIER
- NOISE RECEPTOR

- Ⓟ BUSINESS RELOCATION
- Ⓟ RESIDENTIAL RELOCATION
- Ⓟ SURFACE WATERS
- Ⓟ WETLANDS
- Ⓟ POTENTIAL MEDIUM & HIGH CONTAMINATION



US 92 PD&E STUDY
FROM COUNTY LINE RD TO WABASH AVE
 FINANCIAL PROJECT ID: 433558-1-22-01 COUNTY: POLK



RECOMMENDED ALTERNATIVE
 SHEET: 7

DISCLAIMER OF LIABILITY: The user of this information and data assumes all responsibility and risk for the use of both. Under no circumstances, including negligence, shall the Florida Department of Transportation, its employees, or consultants be liable for any DIRECT, INDIRECT, INCIDENTAL, SPECIAL, EXEMPLARY or CONSEQUENTIAL DAMAGES, or LOST PROFITS that result from the use, misuse or inability to use the application and data. Nor shall the Florida Department of Transportation, its employees, or consultants be liable for any damages resulting from or related to reliance, mistakes, omissions, interruptions, deletion of files, computer viruses, errors, delays, or any failure of performance, communications failure, their, destruction or unauthorized access to the application and data.

NO WARRANTIES: The information provided is made available by the Florida Department of Transportation on an "as is," "as available" basis without warranties of any kind, express or implied. This information cannot be identified as data, documentation, images, or otherwise and has been approved by the Florida Department of Transportation for any use whatsoever.



SEGMENT 1

AIM ENGINEERING & SURVEYING, INC.
 3802 CORPOREX PARK DRIVE, SUITE 225
 TAMPA, FLORIDA 33619
 TEL: (813) 627-4144
 FAX: (813) 664-1899 WWW.AIMENGR.COM

In Association with:
 Adams Traffic, Inc.
 Archaeological Consultants, Inc.
 HDR Engineering, Inc.
 I.F. Rooks and Associates, Inc.
 Inwood Consulting Engineers, Inc.
 Klisinger Campo & Associates, Corp.
 Tierra, Inc.

- 110 BASELINE & STATIONS
- EXISTING R.O.W.
- EXISTING L.A. R.O.W.
- PROPERTY LINE
- AERIALS FLOWN 3/28/2014

- PROPOSED R.O.W.
- PROPOSED PAVEMENT
- PROPOSED SIDEWALK
- TRAFFIC SIGNAL
- MODELED NOISE BARRIER
- NOISE RECEPTOR

- B BUSINESS RELOCATION
- R RESIDENTIAL RELOCATION
- SURFACE WATERS
- WETLANDS
- POTENTIAL MEDIUM & HIGH CONTAMINATION



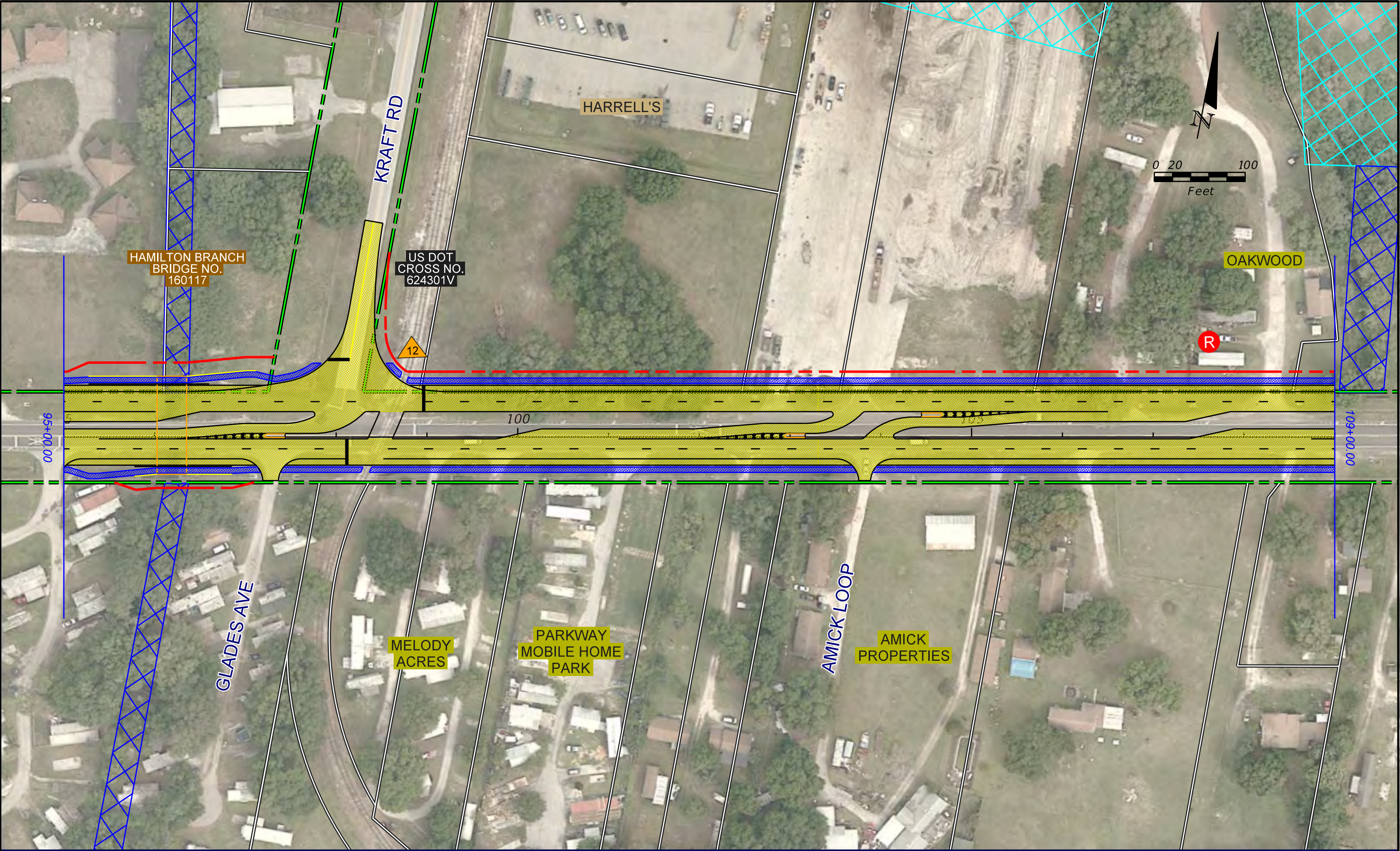
US 92 PD&E STUDY
FROM COUNTY LINE RD TO WABASH AVE
 FINANCIAL PROJECT ID: 433558-1-22-01 COUNTY: POLK



RECOMMENDED ALTERNATIVE
 SHEET: 8

DISCLAIMER OF LIABILITY: The user of this information and data assumes all responsibility and risk for the use of both. Under no circumstances, including negligence, shall the Florida Department of Transportation, its employees, or consultants be liable for any DIRECT, INDIRECT, INCIDENTAL, SPECIAL, EXEMPLARY or CONSEQUENTIAL DAMAGES, or LOST PROFITS that result from the use, misuse or inability to use the application and data. Nor shall the Florida Department of Transportation, its employees, or consultants be liable for any damages resulting from or related to reliance, mistakes, omissions, interruptions, deletion of files, computer viruses, errors, delays, or any failure of performance, communications failure, their, destruction or unauthorized access to the application and data.

NO WARRANTIES: The information provided is made available by the Florida Department of Transportation on an "as is," "as available" basis without warranties of any kind, express or implied. This information cannot be identified as data, documentation, images, or otherwise and has been approved by the Florida Department of Transportation for any use whatsoever.



SEGMENT 1

AIM ENGINEERING & SURVEYING, INC.
 3802 CORPOREX PARK DRIVE, SUITE 225
 TAMPA, FLORIDA 33619
 TEL: (813) 627-4144
 FAX: (813) 664-1899 WWW.AIMENGR.COM

In Association with:
 Adams Traffic, Inc.
 Archaeological Consultants, Inc.
 HDR Engineering, Inc.
 I.F. Rooks and Associates, Inc.
 Inwood Consulting Engineers, Inc.
 Kisinger Campo & Associates, Corp.
 Tierra, Inc.

- 110 BASELINE & STATIONS
- EXISTING R.O.W.
- EXISTING L.A. R.O.W.
- PROPERTY LINE
- AERIALS FLOWN 3/28/2014

- PROPOSED R.O.W.
- PROPOSED PAVEMENT
- PROPOSED SIDEWALK
- TRAFFIC SIGNAL
- MODELED NOISE BARRIER
- NOISE RECEPTOR

- B BUSINESS RELOCATION
- R RESIDENTIAL RELOCATION
- XXXXX SURFACE WATERS
- XXXXX WETLANDS
- 10 POTENTIAL MEDIUM & HIGH CONTAMINATION



US 92 PD&E STUDY
FROM COUNTY LINE RD TO WABASH AVE
 FINANCIAL PROJECT ID: 433558-1-22-01 COUNTY: POLK



RECOMMENDED ALTERNATIVE
 SHEET: 9

DISCLAIMER OF LIABILITY: The user of this information and data assumes all responsibility and risk for the use of both. Under no circumstances, including negligence, shall the Florida Department of Transportation, its employees, or consultants be liable for any DIRECT, INDIRECT, INCIDENTAL, SPECIAL, EXEMPLARY or CONSEQUENTIAL DAMAGES, or LOST PROFITS that result from the use, misuse or inability to use the application and data. Nor shall the Florida Department of Transportation, its employees or consultants be liable for any damages resulting from or related to reliance, mistakes, omissions, interruptions, deletion of files, computer viruses, errors, delays, or any failure of performance, communications failure, their, destruction or unauthorized access to the application and data.

NO WARRANTIES: The information provided is made available by the Florida Department of Transportation on an "as is," "as available" basis without warranties of any kind, express or implied. This information cannot be identified as data, documentation, images, or otherwise and has been approved by the Florida Department of Transportation for any use whatsoever.



SEGMENT 1

AIM ENGINEERING & SURVEYING, INC.
 3802 CORPOREX PARK DRIVE, SUITE 225
 TAMPA, FLORIDA 33619
 TEL: (813) 627-4144
 FAX: (813) 664-1899 WWW.AIMENGR.COM

In Association with:
 Adams Traffic, Inc.
 Archaeological Consultants, Inc.
 HDR Engineering, Inc.
 I.F. Rooks and Associates, Inc.
 Inwood Consulting Engineers, Inc.
 Klisinger Campo & Associates, Corp.
 Tierra, Inc.

- 110 BASELINE & STATIONS
- EXISTING R.O.W.
- EXISTING L.A. R.O.W.
- PROPERTY LINE
- AERIALS FLOWN 3/28/2014

- PROPOSED R.O.W.
- PROPOSED PAVEMENT
- PROPOSED SIDEWALK
- TRAFFIC SIGNAL
- MODELED NOISE BARRIER
- NOISE RECEPTOR

- Ⓟ BUSINESS RELOCATION
- Ⓟ RESIDENTIAL RELOCATION
- Ⓟ SURFACE WATERS
- Ⓟ WETLANDS
- Ⓟ POTENTIAL MEDIUM & HIGH CONTAMINATION



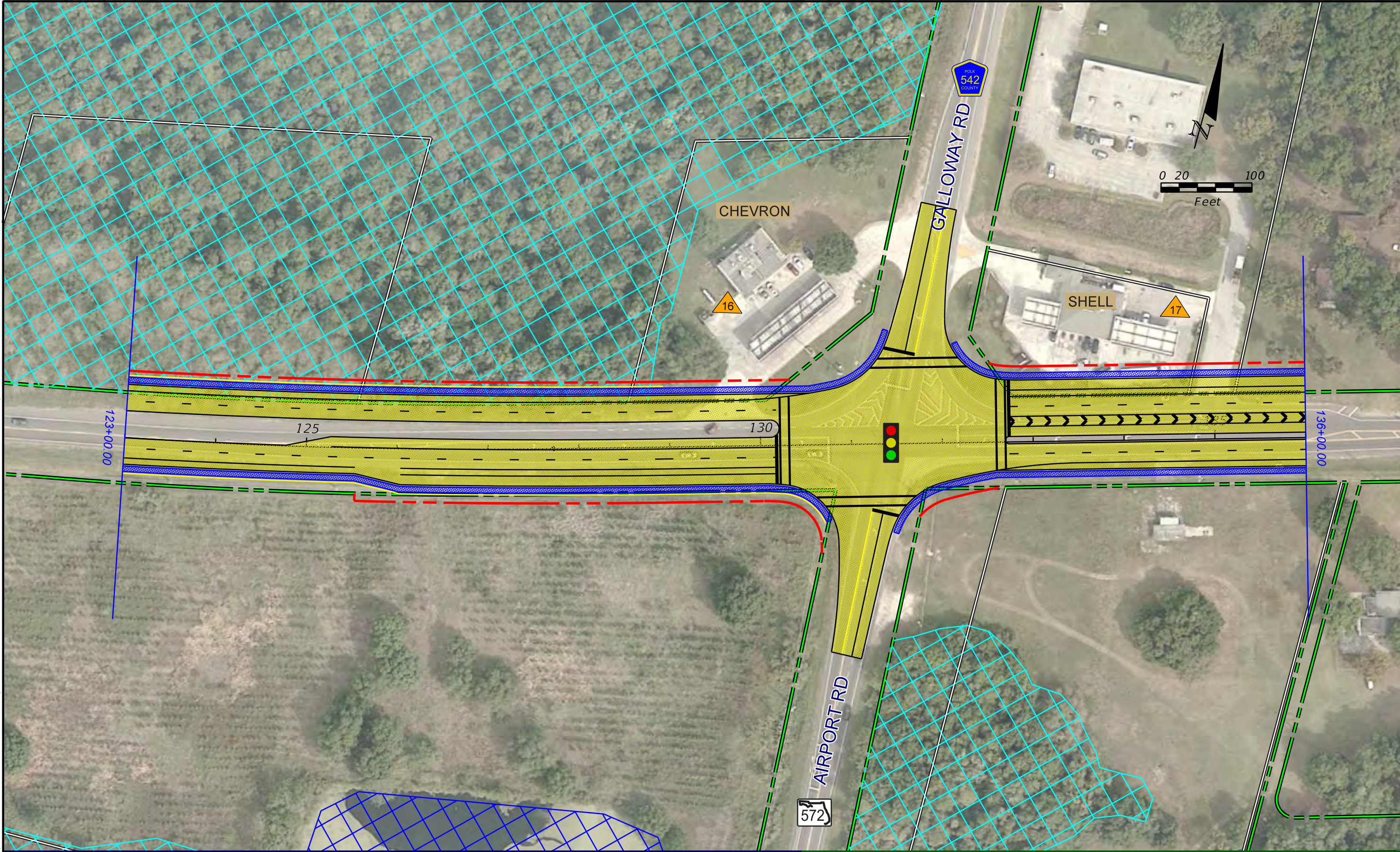
US 92 PD&E STUDY
FROM COUNTY LINE RD TO WABASH AVE
 FINANCIAL PROJECT ID: 433558-1-22-01 COUNTY: POLK



RECOMMENDED ALTERNATIVE
 SHEET: 10

DISCLAIMER OF LIABILITY: The user of this information and data assumes all responsibility and risk for the use of both. Under no circumstances, including negligence, shall the Florida Department of Transportation, its employees, or consultants be liable for any DIRECT, INDIRECT, INCIDENTAL, SPECIAL, EXEMPLARY or CONSEQUENTIAL DAMAGES, or LOST PROFITS that result from the use, misuse or inability to use the application and data. Nor shall the Florida Department of Transportation, its employees or consultants be liable for any damages resulting from or related to reliance, mistakes, omissions, interruptions, deletion of files, computer viruses, errors, delays, or any failure of performance, communications failure, their, destruction or unauthorized access to the application and data.

NO WARRANTIES: The information provided is made available by the Florida Department of Transportation on an "as is," "as available" basis without warranties of any kind, express or implied. This information cannot be identified as data, documentation, images, or otherwise and has been approved by the Florida Department of Transportation for any use whatsoever.



SEGMENT 1

SEGMENT 2

AIM ENGINEERING & SURVEYING, INC.
 3802 CORPOREX PARK DRIVE, SUITE 225
 TAMPA, FLORIDA 33619
 TEL: (813) 627-4144
 FAX: (813) 664-1899 WWW.AIMENGR.COM

In Association with:
 Adams Traffic, Inc.
 Archaeological Consultants, Inc.
 HDR Engineering, Inc.
 I.F. Rooks and Associates, Inc.
 Inwood Consulting Engineers, Inc.
 Kisinger Campo & Associates, Corp.
 Tierra, Inc.

110	BASELINE & STATIONS	---	PROPOSED R.O.W.		BUSINESS RELOCATION
	EXISTING R.O.W.		PROPOSED PAVEMENT		RESIDENTIAL RELOCATION
	EXISTING L.A. R.O.W.		PROPOSED SIDEWALK		SURFACE WATERS
	PROPERTY LINE		TRAFFIC SIGNAL		WETLANDS
	AERIALS FLOWN 3/28/2014		MODELED NOISE BARRIER		POTENTIAL MEDIUM & HIGH CONTAMINATION
			NOISE RECEPTOR		



US 92 PD&E STUDY
FROM COUNTY LINE RD TO WABASH AVE
 FINANCIAL PROJECT ID: 433558-1-22-01 COUNTY: POLK



RECOMMENDED ALTERNATIVE
 SHEET: 11

DISCLAIMER OF LIABILITY: The user of this information and data assumes all responsibility and risk for the use of both. Under no circumstances, including negligence, shall the Florida Department of Transportation, its employees, or consultants be liable for any DIRECT, INDIRECT, INCIDENTAL, SPECIAL, EXEMPLARY or CONSEQUENTIAL DAMAGES, or LOST PROFITS that result from the use, misuse or inability to use the application and data. Nor shall the Florida Department of Transportation, its employees, or consultants be liable for any damages resulting from or related to reliance, mistakes, omissions, interruptions, deletion of files, computer viruses, errors, or any failure of performance, communications failure, their, destruction or unauthorized access to the application and data.

NO WARRANTIES: The information provided is made available by the Florida Department of Transportation on an "as is," "as available" basis without warranties of any kind, express or implied. This information cannot be identified as data, documentation, images, or otherwise and has been approved by the Florida Department of Transportation for any use whatsoever.



SEGMENT 2

AIM ENGINEERING & SURVEYING, INC.
 3802 CORPOREX PARK DRIVE, SUITE 225
 TAMPA, FLORIDA 33619
 TEL: (813) 627-4144
 FAX: (813) 664-1899 WWW.AIMENGR.COM

In Association with:
 Adams Traffic, Inc.
 Archaeological Consultants, Inc.
 HDR Engineering, Inc.
 I.F. Rooks and Associates, Inc.
 Inwood Consulting Engineers, Inc.
 Klisinger Campo & Associates, Corp.
 Tierra, Inc.

- 110 BASELINE & STATIONS
- EXISTING R.O.W.
- EXISTING L.A. R.O.W.
- PROPERTY LINE
- AERIALS FLOWN 3/28/2014

- PROPOSED R.O.W.
- PROPOSED PAVEMENT
- PROPOSED SIDEWALK
- TRAFFIC SIGNAL
- MODELED NOISE BARRIER
- NOISE RECEPTOR

- B BUSINESS RELOCATION
- R RESIDENTIAL RELOCATION
- SURFACE WATERS
- WETLANDS
- POTENTIAL MEDIUM & HIGH CONTAMINATION



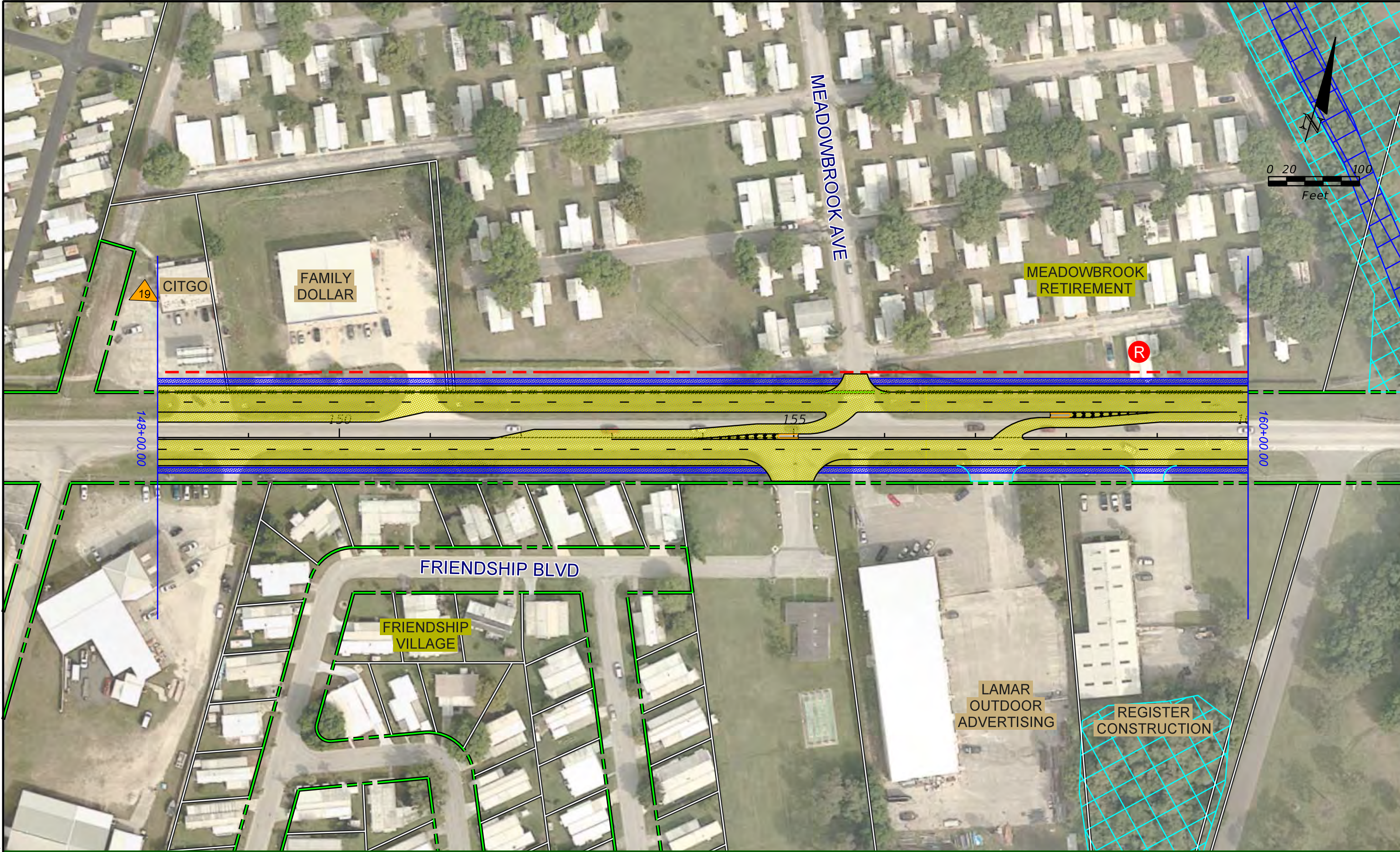
US 92 PD&E STUDY
FROM COUNTY LINE RD TO WABASH AVE
 FINANCIAL PROJECT ID: 433558-1-22-01 COUNTY: POLK



RECOMMENDED ALTERNATIVE
 SHEET: 12

DISCLAIMER OF LIABILITY: The user of this information and data assumes all responsibility and risk for the use of both. Under no circumstances, including negligence, shall the Florida Department of Transportation, its employees, or consultants be liable for any DIRECT, INDIRECT, INCIDENTAL, SPECIAL, EXEMPLARY, or CONSEQUENTIAL DAMAGES, or LOST PROFITS that result from the use, misuse, or inability to use the application and data. Nor shall the Florida Department of Transportation, its employees, or consultants be liable for any damages resulting from or related to reliance, mistakes, omissions, interruptions, deletions of files, computer viruses, errors, delays, or any failure of performance, communications failure, their, destruction or unauthorized access to the application and data.

NO WARRANTIES: The information provided is made available by the Florida Department of Transportation on an "as is, as available" basis without warranties of any kind, express or implied. This information cannot be identified as data, documentation, images, or otherwise and has been approved by the Florida Department of Transportation for any use whatsoever.



SEGMENT 2

AIM ENGINEERING & SURVEYING, INC.
 3802 CORPOREX PARK DRIVE, SUITE 225
 TAMPA, FLORIDA 33619
 TEL: (813) 627-4144
 FAX: (813) 664-1899 WWW.AIMENGR.COM

In Association with:
 Adams Traffic, Inc.
 Archaeological Consultants, Inc.
 HDR Engineering, Inc.
 I.F. Rooks and Associates, Inc.
 Inwood Consulting Engineers, Inc.
 Kisinger Campo & Associates, Corp.
 Tierra, Inc.

- 110 BASELINE & STATIONS
- EXISTING R.O.W.
- EXISTING L.A. R.O.W.
- PROPERTY LINE
- AERIALS FLOWN 3/28/2014
- PROPOSED R.O.W.
- PROPOSED PAVEMENT
- PROPOSED SIDEWALK
- TRAFFIC SIGNAL
- MODELED NOISE BARRIER
- NOISE RECEPTOR
- B BUSINESS RELOCATION
- R RESIDENTIAL RELOCATION
- SURFACE WATERS
- WETLANDS
- POTENTIAL MEDIUM & HIGH CONTAMINATION



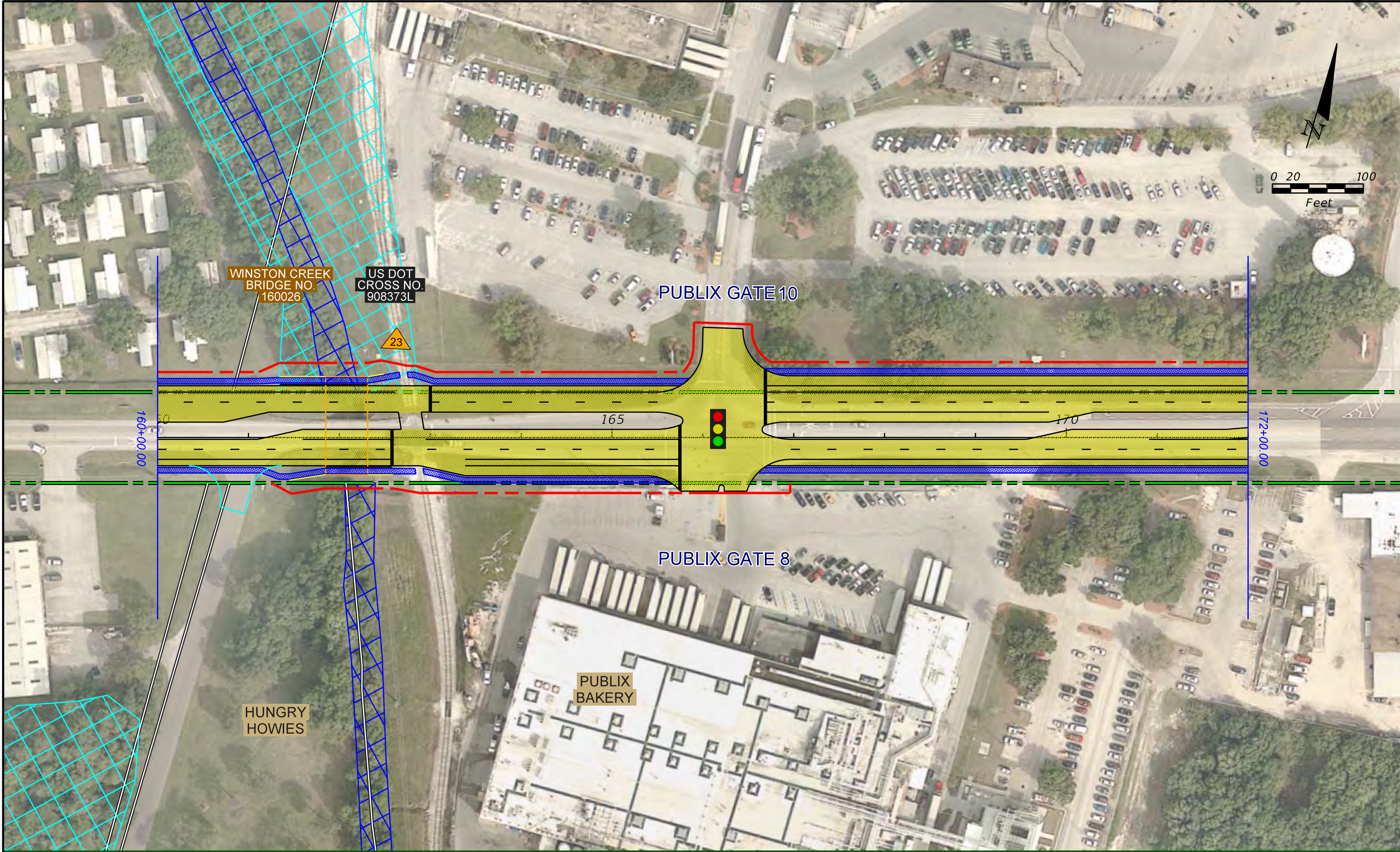
US 92 PD&E STUDY
FROM COUNTY LINE RD TO WABASH AVE
 FINANCIAL PROJECT ID: 433558-1-22-01 COUNTY: POLK



RECOMMENDED ALTERNATIVE
 SHEET: 13

DISCLAIMER OF LIABILITY: The user of this information and data assumes all responsibility and risk for the use of both. Under no circumstances, including negligence, shall the Florida Department of Transportation, its employees, or consultants be liable for any DIRECT, INDIRECT, INCIDENTAL, SPECIAL, EXEMPLARY or CONSEQUENTIAL DAMAGES, or LOST PROFITS that result from the use, misuse or inability to use the application and data. Nor shall the Florida Department of Transportation, its employees, or consultants be liable for any damages resulting from or related to reliance, mistakes, omissions, interruptions, deletion of files, computer viruses, errors, or any failure of performance, communications failure, their, destruction or unauthorized access to the application and data.

NO WARRANTIES: The information provided is made available by the Florida Department of Transportation on an "as is," "as available" basis without warranties of any kind, express or implied. This information cannot be identified as data, documentation, images, or otherwise. It has been approved by the Florida Department of Transportation for any use whatsoever.



SEGMENT 2

AIM ENGINEERING & SURVEYING, INC.
 3802 CORPOREX PARK DRIVE, SUITE 225
 TAMPA, FLORIDA 33619
 TEL: (813) 627-4144
 FAX: (813) 664-1899 WWW.AIMENGR.COM

In Association with:
 Adams Traffic, Inc.
 Archaeological Consultants, Inc.
 HDR Engineering, Inc.
 I.F. Rooks and Associates, Inc.
 Inwood Consulting Engineers, Inc.
 Klisinger Campo & Associates, Corp.
 Tierra, Inc.

- 110 BASELINE & STATIONS
- EXISTING R.O.W.
- EXISTING L.A. R.O.W.
- PROPERTY LINE
- AERIALS FLOWN 3/28/2014

- PROPOSED R.O.W.
- PROPOSED PAVEMENT
- PROPOSED SIDEWALK
- TRAFFIC SIGNAL
- MODELED NOISE BARRIER
- NOISE RECEPTOR

- B BUSINESS RELOCATION
- R RESIDENTIAL RELOCATION
- XXXXX SURFACE WATERS
- XXXXX WETLANDS
- 10 POTENTIAL MEDIUM & HIGH CONTAMINATION



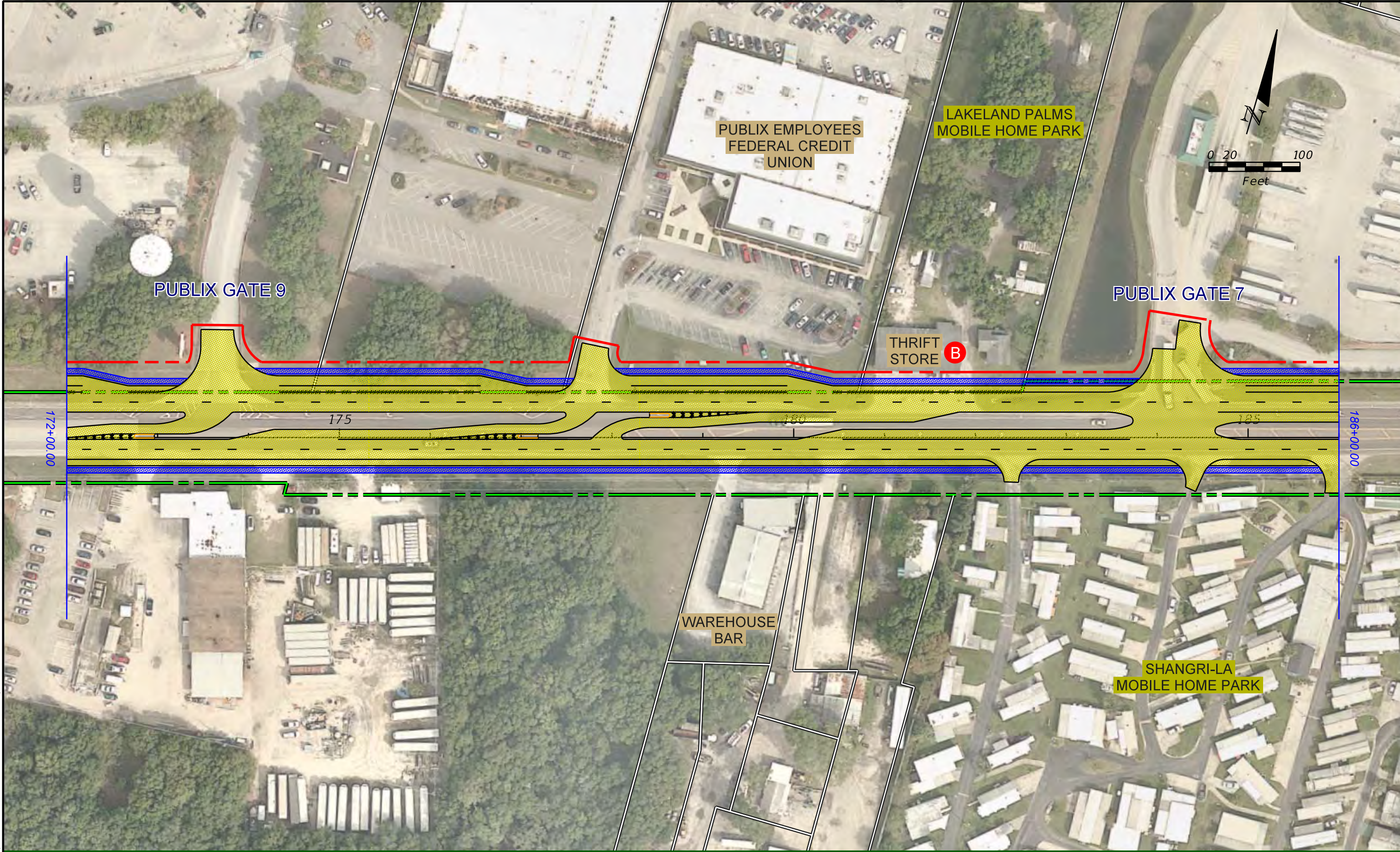
US 92 PD&E STUDY
FROM COUNTY LINE RD TO WABASH AVE
 FINANCIAL PROJECT ID: 433558-1-22-01 COUNTY: POLK



RECOMMENDED ALTERNATIVE
 SHEET: 14

DISCLAIMER OF LIABILITY: The user of this information and data assumes all responsibility and risk for the use of both. Under no circumstances, including negligence, shall the Florida Department of Transportation, its employees, or consultants be liable for any DIRECT, INDIRECT, INCIDENTAL, SPECIAL, EXEMPLARY, or CONSEQUENTIAL DAMAGES, or LOST PROFITS that result from the use, misuse or inability to use the application and data. Nor shall the Florida Department of Transportation, its employees or consultants be liable for any damages resulting from or related to reliance, mistakes, omissions, interruptions, deletion of files, computer viruses, errors, or any failure of performance, communications failure, their, destruction or unauthorized access to the application and data.

NO WARRANTIES: The information provided is made available by the Florida Department of Transportation on an "as is," "as available" basis without warranties of any kind, express or implied. This information cannot be identified as data, documentation, images, or otherwise and has been approved by the Florida Department of Transportation for any use whatsoever.



SEGMENT 2

AIM ENGINEERING & SURVEYING, INC.
 In Association with:
 Adams Traffic, Inc.
 Archaeological Consultants, Inc.
 HDR Engineering, Inc.
 I.F. Rooks and Associates, Inc.
 Inwood Consulting Engineers, Inc.
 Klisinger Campo & Associates, Corp.
 Tierra, Inc.

- 110 BASELINE & STATIONS
- EXISTING R.O.W.
- EXISTING L.A. R.O.W.
- PROPERTY LINE
- AERIALS FLOWN 3/28/2014

- PROPOSED R.O.W.
- PROPOSED PAVEMENT
- PROPOSED SIDEWALK
- TRAFFIC SIGNAL
- MODELED NOISE BARRIER
- NOISE RECEPTOR

- B BUSINESS RELOCATION
- R RESIDENTIAL RELOCATION
- SURFACE WATERS
- WETLANDS
- POTENTIAL MEDIUM & HIGH CONTAMINATION



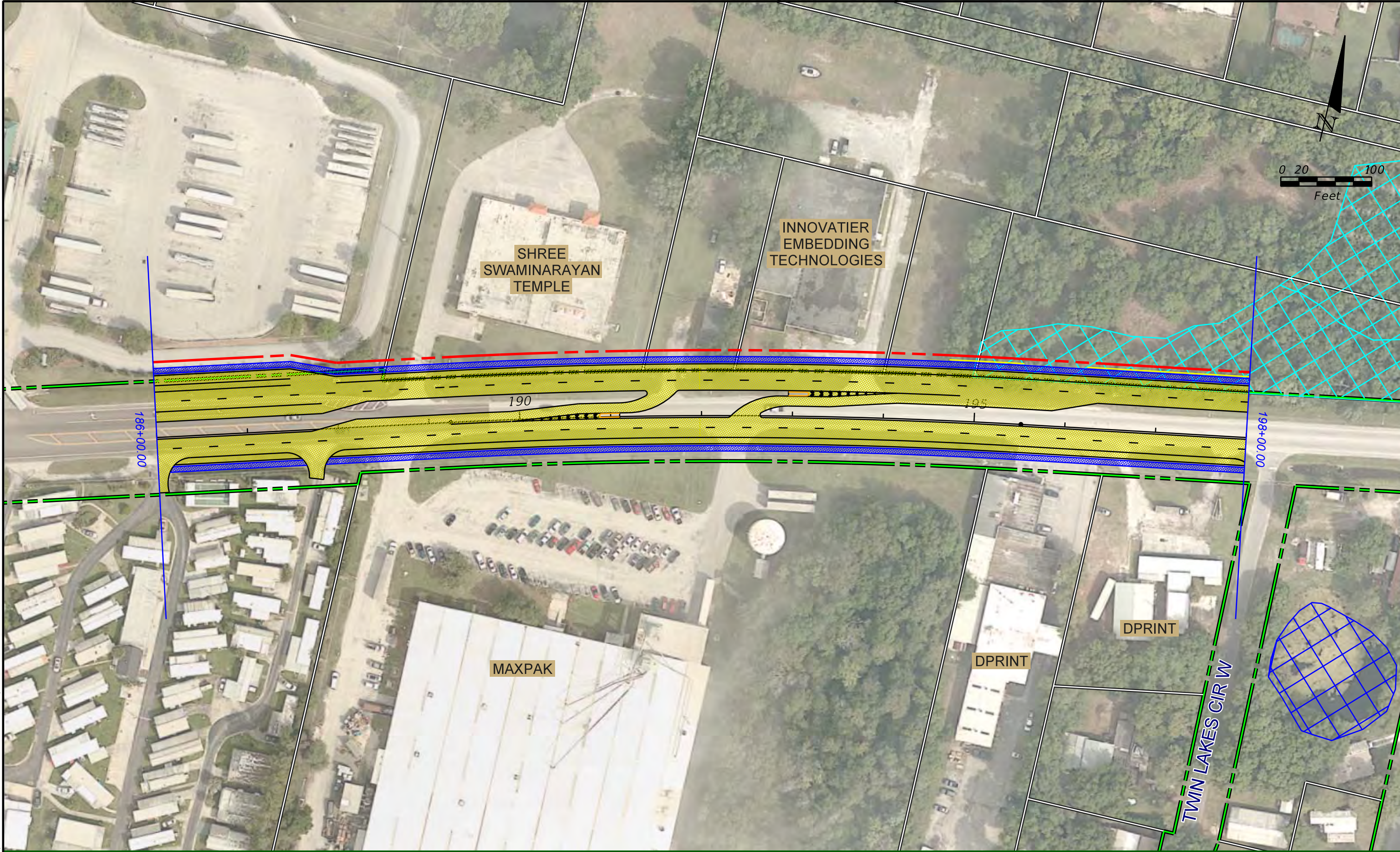
US 92 PD&E STUDY
FROM COUNTY LINE RD TO WABASH AVE
 FINANCIAL PROJECT ID: 433558-1-22-01 COUNTY: POLK



RECOMMENDED ALTERNATIVE
 SHEET: 15

DISCLAIMER OF LIABILITY: The user of this information and data assumes all responsibility and risk for the use of both. Under no circumstances, including negligence, shall the Florida Department of Transportation, its employees, or consultants be liable for any DIRECT, INDIRECT, INCIDENTAL, SPECIAL, EXEMPLARY, or CONSEQUENTIAL DAMAGES, or LOST PROFITS that result from the use, misuse or inability to use the application and data. Nor shall the Florida Department of Transportation, its employees or consultants be liable for any damages resulting from or related to reliance, mistakes, omissions, interruptions, deletion of files, computer viruses, errors, delays or any failure of performance, communications failure, their, destruction or unauthorized access to the application and data.

NO WARRANTIES: The information provided is made available by the Florida Department of Transportation on an "as is" basis without warranties of any kind, express or implied. This information cannot be identified as data, documentation, images, or otherwise and has been approved by the Florida Department of Transportation for any use whatsoever.



SEGMENT 2

AIM ENGINEERING & SURVEYING, INC.
 3802 CORPOREX PARK DRIVE, SUITE 225
 TAMPA, FLORIDA 33619
 TEL: (813) 627-4144
 FAX: (813) 664-1899 WWW.AIMENGR.COM

In Association with:
 Adams Traffic, Inc.
 Archaeological Consultants, Inc.
 HDR Engineering, Inc.
 I.F. Rooks and Associates, Inc.
 Inwood Consulting Engineers, Inc.
 Kisinger Campo & Associates, Corp.
 Tierra, Inc.

- 110 BASELINE & STATIONS
- EXISTING R.O.W.
- EXISTING L.A. R.O.W.
- PROPERTY LINE
- PROPOSED R.O.W.
- PROPOSED PAVEMENT
- PROPOSED SIDEWALK
- TRAFFIC SIGNAL
- MODELED NOISE BARRIER
- NOISE RECEPTOR

- B BUSINESS RELOCATION
- R RESIDENTIAL RELOCATION
- SURFACE WATERS
- WETLANDS
- POTENTIAL MEDIUM & HIGH CONTAMINATION



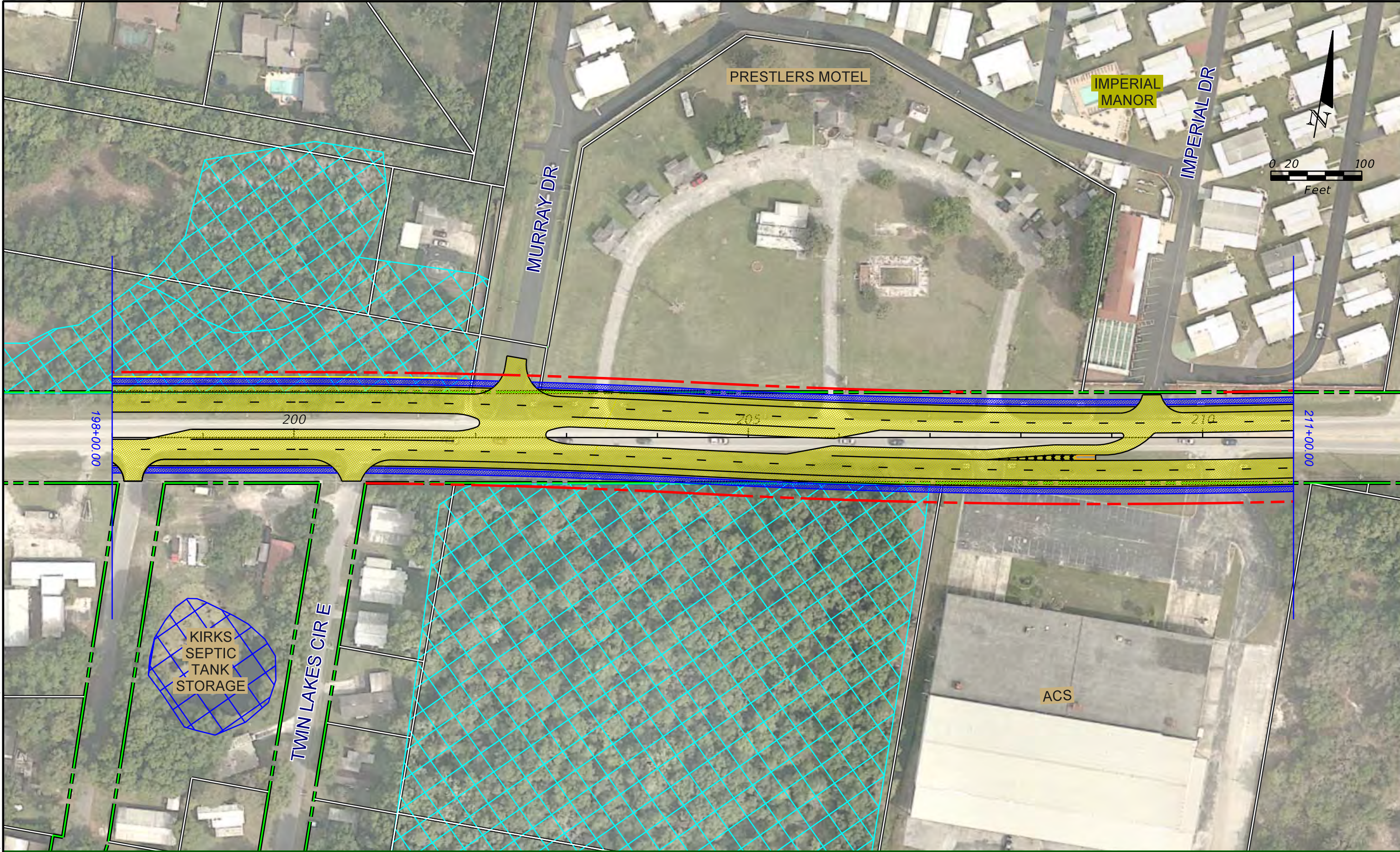
US 92 PD&E STUDY
FROM COUNTY LINE RD TO WABASH AVE
 FINANCIAL PROJECT ID: 433558-1-22-01 COUNTY: POLK



RECOMMENDED ALTERNATIVE
 SHEET: 16

DISCLAIMER OF LIABILITY: The user of this information and data assumes all responsibility and risk for the use of both. Under no circumstances, including negligence, shall the Florida Department of Transportation, its employees, or consultants be liable for any DIRECT, INDIRECT, INCIDENTAL, SPECIAL, EXEMPLARY or CONSEQUENTIAL DAMAGES, or LOST PROFITS that result from the use, misuse or inability to use the application and data. Nor shall the Florida Department of Transportation, its employees or consultants be liable for any damages resulting from or related to reliance, mistakes, omissions, interruptions, deletions of files, computer viruses, errors, delays or any failure of performance, communications failure, their destruction or unauthorized access to the application and data.

NO WARRANTIES: The information provided is made available by the Florida Department of Transportation on an "as is" basis without warranties of any kind, express or implied. This information cannot be identified as data, documentation, images, or otherwise and has been approved by the Florida Department of Transportation for any use whatsoever.



SEGMENT 2

AIM ENGINEERING & SURVEYING, INC.
 3802 CORPOREX PARK DRIVE, SUITE 225
 TAMPA, FLORIDA 33619
 TEL: (813) 627-4144
 FAX: (813) 664-1899 WWW.AIMENGR.COM

In Association with:
 Adams Traffic, Inc.
 Archaeological Consultants, Inc.
 HDR Engineering, Inc.
 I.F. Rooks and Associates, Inc.
 Inwood Consulting Engineers, Inc.
 Kisinger Campo & Associates, Corp.
 Tierra, Inc.

- 110 BASELINE & STATIONS
- EXISTING R.O.W.
- EXISTING L.A. R.O.W.
- PROPERTY LINE
- AERIALS FLOWN 3/28/2014

- PROPOSED R.O.W.
- PROPOSED PAVEMENT
- PROPOSED SIDEWALK
- TRAFFIC SIGNAL
- MODELED NOISE BARRIER
- NOISE RECEPTOR

- B BUSINESS RELOCATION
- R RESIDENTIAL RELOCATION
- SURFACE WATERS
- WETLANDS
- POTENTIAL MEDIUM & HIGH CONTAMINATION



US 92 PD&E STUDY
FROM COUNTY LINE RD TO WABASH AVE
 FINANCIAL PROJECT ID: 433558-1-22-01 COUNTY: POLK



RECOMMENDED ALTERNATIVE
 SHEET: 17

DISCLAIMER OF LIABILITY: The user of this information and data assumes all responsibility and risk for the use of both. Under no circumstances, including negligence, shall the Florida Department of Transportation, its employees, or consultants be liable for any DIRECT, INDIRECT, INCIDENTAL, SPECIAL, EXEMPLARY or CONSEQUENTIAL DAMAGES, or LOST PROFITS that result from the use, misuse or inability to use the application and data. Nor shall the Florida Department of Transportation, its employees or consultants be liable for any damages resulting from or related to reliance, mistakes, omissions, interruptions, deletion of files, computer viruses, errors, omissions, or any failure of performance, communications failure, their, destruction or unauthorized access to the application and data.

NO WARRANTIES: The information provided is made available by the Florida Department of Transportation on an "as is," "as available" basis without warranties of any kind, express or implied. This information cannot be identified as data, documentation, images, or otherwise and has been approved by the Florida Department of Transportation for any use whatsoever.



SEGMENT 2

AIM ENGINEERING & SURVEYING, INC.
 3802 CORPOREX PARK DRIVE, SUITE 225
 TAMPA, FLORIDA 33619
 TEL: (813) 627-4144
 FAX: (813) 664-1899 WWW.AIMENGR.COM

In Association with:
 Adams Traffic, Inc.
 Archaeological Consultants, Inc.
 HDR Engineering, Inc.
 I.F. Rooks and Associates, Inc.
 Inwood Consulting Engineers, Inc.
 Kisinger Campo & Associates, Corp.
 Tierra, Inc.

- 110 BASELINE & STATIONS
- EXISTING R.O.W.
- EXISTING L.A. R.O.W.
- PROPERTY LINE
- AERIALS FLOWN 3/28/2014

- PROPOSED R.O.W.
- PROPOSED PAVEMENT
- PROPOSED SIDEWALK
- TRAFFIC SIGNAL
- MODELED NOISE BARRIER
- NOISE RECEPTOR

- BUSINESS RELOCATION
- RESIDENTIAL RELOCATION
- SURFACE WATERS
- WETLANDS
- POTENTIAL MEDIUM & HIGH CONTAMINATION



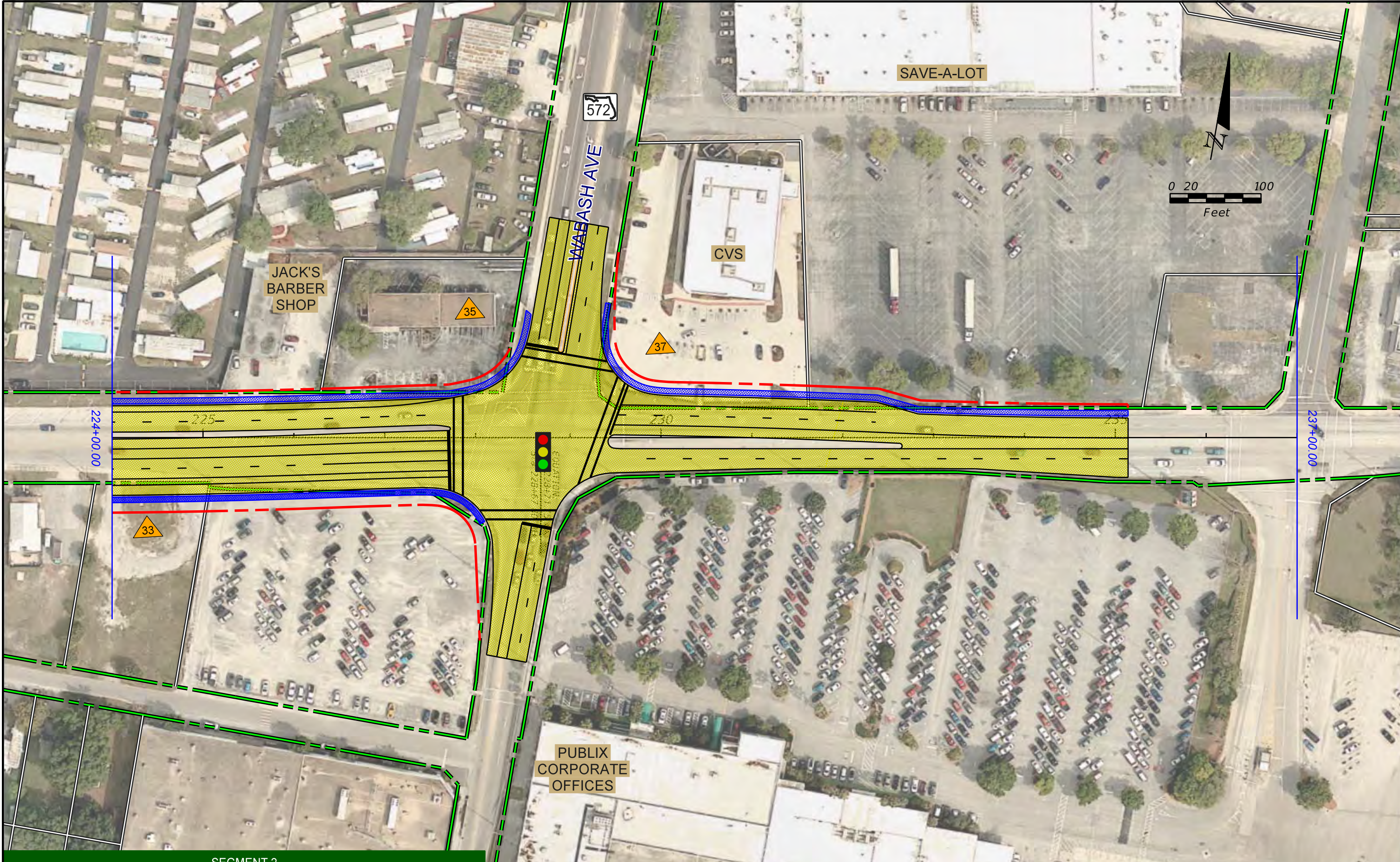
US 92 PD&E STUDY
FROM COUNTY LINE RD TO WABASH AVE
 FINANCIAL PROJECT ID: 433558-1-22-01 COUNTY: POLK



RECOMMENDED ALTERNATIVE
 SHEET: 18

DISCLAIMER OF LIABILITY: The user of this information and data assumes all responsibility and risk for the use of both. Under no circumstances, including negligence, shall the Florida Department of Transportation, its employees, or consultants be liable for any DIRECT, INDIRECT, INCIDENTAL, SPECIAL, EXEMPLARY, or CONSEQUENTIAL DAMAGES, or LOST PROFITS that result from the use, misuse or inability to use the application and data. Nor shall the Florida Department of Transportation, or its employees or consultants, be liable for any damages resulting from or related to reliance, mistakes, omissions, interruptions, deletion of files, computer viruses, errors, defects, or any failure of performance, communications, transmissions, or any other cause, whether known or unknown, anticipated or not.

NO WARRANTIES: The information provided is made available by the Florida Department of Transportation on an "as is" basis, without warranties of any kind, express or implied. This information cannot be identified as data, documentation, images, or otherwise and has been approved by the Florida Department of Transportation for any use whatsoever.



SEGMENT 2

AIM ENGINEERING & SURVEYING, INC.
 In Association with:
 Adams Traffic, Inc.
 Archaeological Consultants, Inc.
 HDR Engineering, Inc.
 I.F. Rooks and Associates, Inc.
 Inwood Consulting Engineers, Inc.
 Kisinger Campo & Associates, Corp.
 Terra, Inc.

3802 CORPOREX PARK DRIVE, SUITE 225
 TAMPA, FLORIDA 33619
 TEL: (813) 627-4144
 FAX: (813) 664-1899 WWW.AIMENGR.COM

- 110 BASELINE & STATIONS
- EXISTING R.O.W.
- EXISTING L.A. R.O.W.
- PROPERTY LINE
- AERIALS FLOWN 3/29/2014
- PROPOSED R.O.W.
- PROPOSED PAVEMENT
- PROPOSED SIDEWALK
- TRAFFIC SIGNAL
- MODELED NOISE BARRIER
- NOISE RECEPTOR
- BUSINESS RELOCATION
- RESIDENTIAL RELOCATION
- SURFACE WATERS
- WETLANDS
- POTENTIAL MEDIUM & HIGH CONTAMINATION



US 92 PD&E STUDY
FROM COUNTY LINE RD TO WABASH AVE
 FINANCIAL PROJECT ID: 433558-1-22-01 COUNTY: POLK



RECOMMENDED ALTERNATIVE

SHEET: 19

DISCLAIMER OF LIABILITY: The user of this information and data assumes all responsibility and risk for the use of both. Under no circumstances, including negligence, shall the Florida Department of Transportation, its employees, or consultants be liable for any DIRECT, INDIRECT, INCIDENTAL, SPECIAL, EXEMPLARY, or CONSEQUENTIAL DAMAGES, or LOST PROFITS that result from the use, misuse or inability to use the application and data. Nor shall the Florida Department of Transportation, its employees be liable for any damages resulting from or related to reliance, mistakes, omissions, interruptions, deletions of files, computer viruses, errors, or any failure of performance, communications failure, their, destruction or unauthorized access to the application and data.

NO WARRANTIES: The information provided is made available by the Florida Department of Transportation on an "as is," "as available" basis without warranties of any kind, express or implied. This information cannot be identified as data, documentation, images, or otherwise that has been approved by the Florida Department of Transportation for any use whatsoever.



AIM ENGINEERING & SURVEYING, INC.
 3802 CORPOREX PARK DRIVE, SUITE 225
 TAMPA, FLORIDA 33619
 TEL: (813) 627-4144
 FAX: (813) 664-1899 WWW.AIMENGR.COM

In Association with:
 Adams Traffic, Inc.
 Archaeological Consultants, Inc.
 HDR Engineering, Inc.
 I.F. Rooks and Associates, Inc.
 Inwood Consulting Engineers, Inc.
 Kisinger Campo & Associates, Corp.
 Tierra, Inc.

- 110 BASELINE & STATIONS
- EXISTING R.O.W.
- EXISTING L.A. R.O.W.
- PROPERTY LINE
- AERIALS FLOWN 3/28/2014

- PROPOSED R.O.W.
- PROPOSED PAVEMENT
- PROPOSED SIDEWALK
- TRAFFIC SIGNAL
- MODELED NOISE BARRIER
- NOISE RECEPTOR

- BUSINESS RELOCATION
- RESIDENTIAL RELOCATION
- SURFACE WATERS
- WETLANDS
- POTENTIAL MEDIUM & HIGH CONTAMINATION



US 92 PD&E STUDY
FROM COUNTY LINE RD TO WABASH AVE
 FINANCIAL PROJECT ID: 433558-1-22-01 COUNTY: POLK



RECOMMENDED ALTERNATIVE
 SHEET: 20