

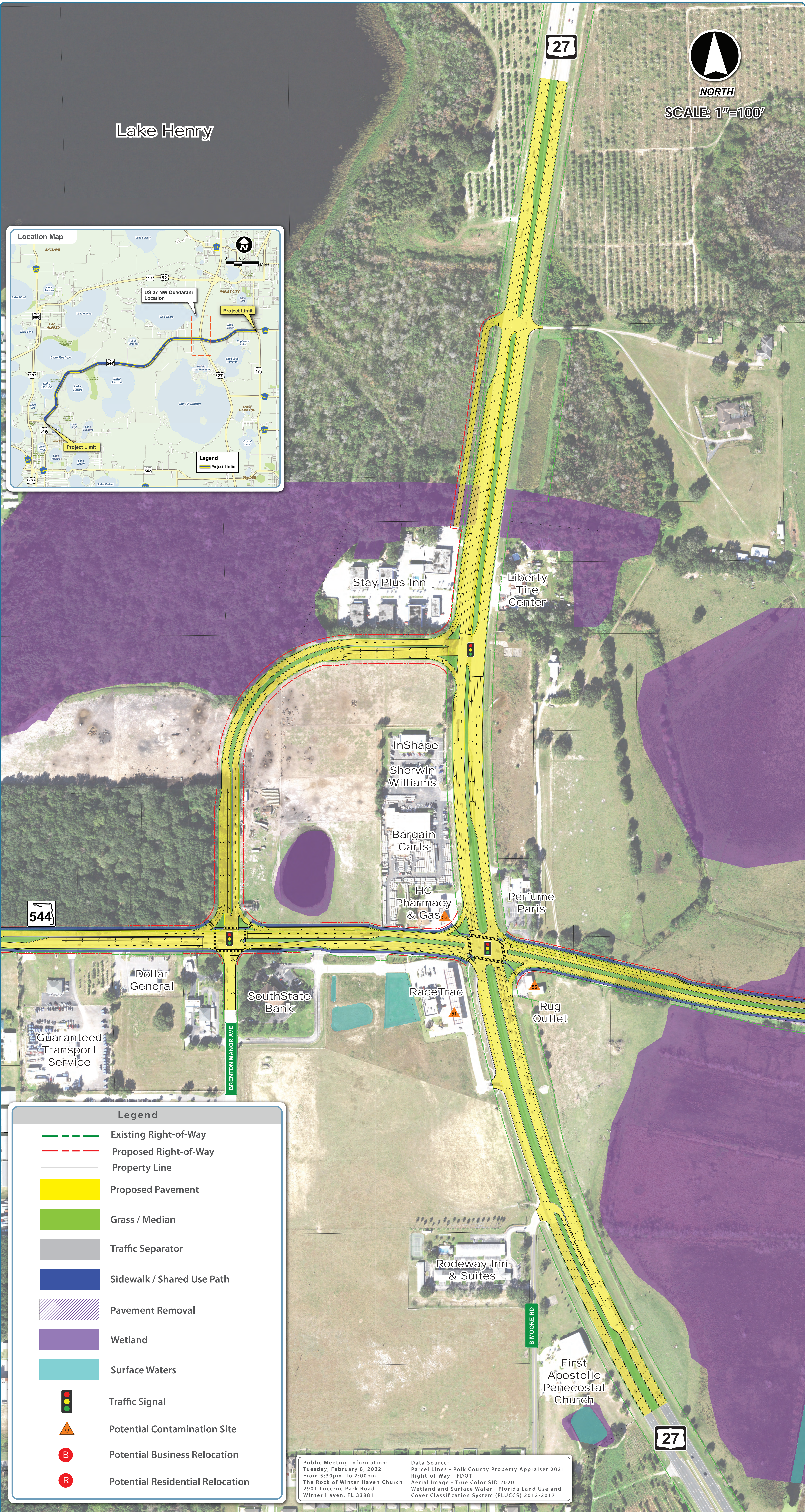


District 1, Polk County
Financial Project ID: 440273-1

State Road 544 PD&E Study

from Martin Luther King Blvd. to State Road 17

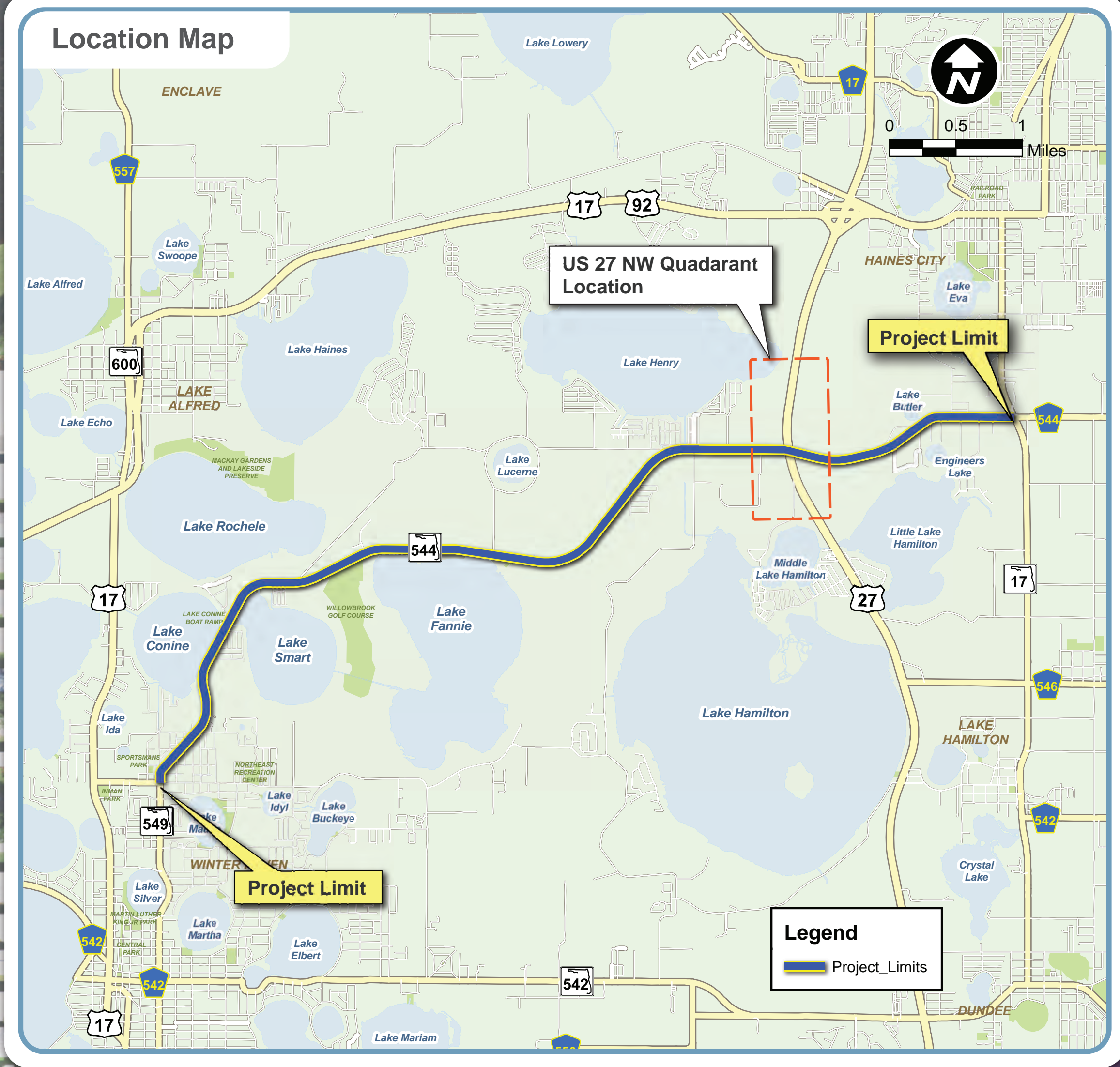
US 27 and Brenton Manor Avenue North West Quadrant Alternative



Lake Henry



NORTH
SCALE: 1"=100'



Stay Plus Inn

Liberty
Tire
Center

InShape
Sherwin
Williams

Bargain
Carts

HC
Pharmacy
& Gas

Perfume
Paris

544

Dollar
General

SouthState
Bank

RaceTrac

Rug
Outlet

Guaranteed
Transport
Service

BRENTON MANOR AVE

Rodeway Inn
& Suites

First
Apostolic
Penecostal
Church

27

Legend	
	Existing Right-of-Way
	Proposed Right-of-Way
	Property Line
	Proposed Pavement
	Grass / Median
	Traffic Separator
	Sidewalk / Shared Use Path
	Pavement Removal
	Wetland
	Surface Waters
	Traffic Signal
	Potential Contamination Site
	Potential Business Relocation
	Potential Residential Relocation

Public Meeting Information:
 Tuesday, February 8, 2022
 From 5:30pm To 7:00pm
 The Rock of Winter Haven Church
 2901 Lucerne Park Road
 Winter Haven, FL 33881

Data Source:
 Parcel Lines - Polk County Property Appraiser 2021
 Right-of-Way - FDOT
 Aerial Image - True Color SID 2020
 Wetland and Surface Water - Florida Land Use and
 Cover Classification System (FLUCCS) 2012-2017